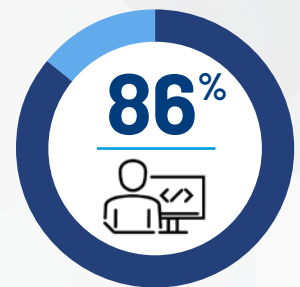
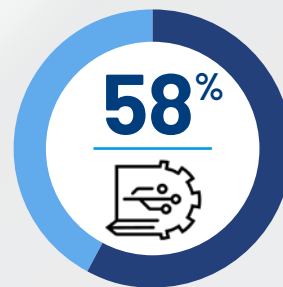
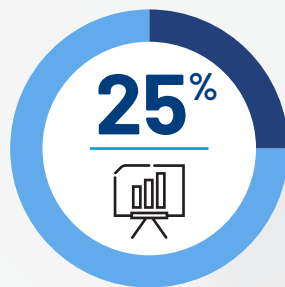
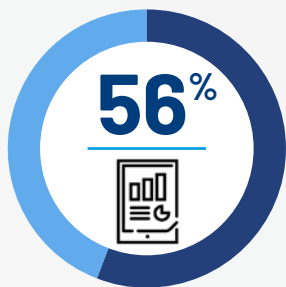


# Scalable Control Systems

## A primed market for change\*

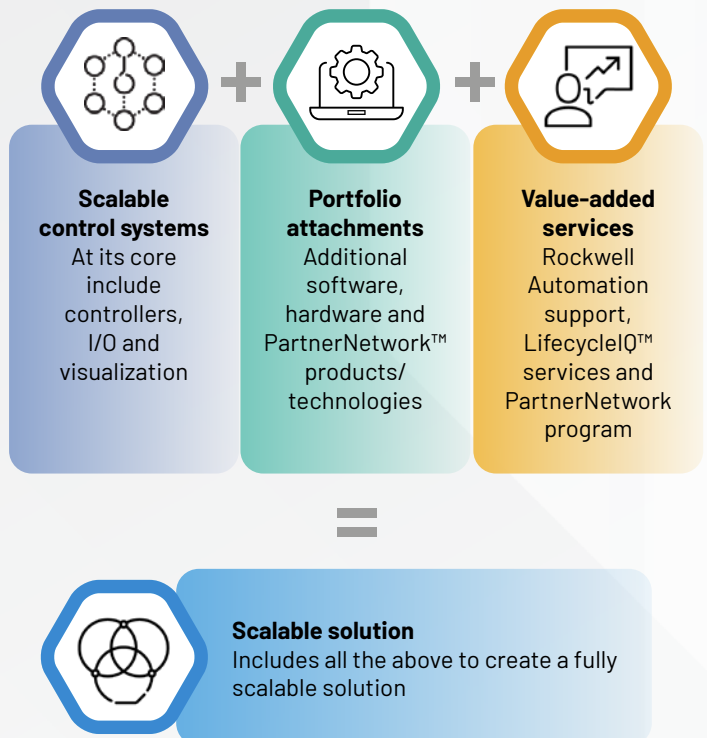
Compared to just 5 years ago, manufacturing looks unrecognizable. The rapid digital transformation seen in manufacturing has generated practices that are more efficient, less wasteful and increasingly connected. The adoption of these practices for smart manufacturing continues to accelerate.



## You have a business to run, we can make it better



## Create a scalable solution



\*Sources:  
 • Deloitte, "2024 manufacturing industry outlook"  
 • Capgemini, "Digital Engineering: The new growth engine for discrete manufacturers"

# Optimize your operations with **Scalable Control Systems**



## Transform and adapt with simplified solutions

- Simplify manufacturing processes
- Integrate and connect the entire plant
- Unlock the potential of existing resources
- Achieve full workforce capabilities

→ Increased throughput and get to market faster



## Attain desired business outcomes faster

- Focus on business challenges first
- Gain a competitive edge in a rapidly evolving market
- Optimize speed and efficiency without sacrificing quality

→ Smarter, more efficient packaging



## Stay continuously supported

- Access industry-leading support
- Make use of best-in-class services
- Harness unmatched people network, products and strategic partnerships

→ Reduced downtime and elevated productivity



## Speed up digitalization and maintain compliance





- Enable more reliable and efficient control
- Accelerate digital transformation across the heavy industries
- Reduce safety, compliance and security risks

→ Enhanced operational safety and efficiency

**Discover the benefits of an outcome-based approach and  
develop strategies to increase speed to market.**

**Learn more about Scalable Control Systems**  
[rok.auto/controllers](https://rok.auto/controllers)



Connect with us.    

[rockwellautomation.com](https://rockwellautomation.com)

expanding **human possibility**<sup>®</sup>

AMERICAS: Rockwell Automation, 1201 South Second Street, Milwaukee, WI 53204-2496 USA, Tel: (1) 414.382.2000

EUROPE/MIDDLE EAST/AFRICA: Rockwell Automation NV, Pegasus Park, De Kleetlaan 12a, 1831 Diegem, Belgium, Tel: (32) 2663 0600

ASIA PACIFIC: Rockwell Automation SEA Pte Ltd, 2 Corporation Road, #04-05, Main Lobby, Corporation Place, Singapore 618494, Tel: (65) 6510 6608

UNITED KINGDOM: Rockwell Automation Ltd., Pitfield, Kiln Farm, Milton Keynes, MK11 3DR, United Kingdom, Tel: (44)(1908) 838-800

Allen-Bradley, expanding human possibility, FactoryTalk, LifecycleIQ, PartnerNetwork, Rockwell Automation, and TechConnect are registered trademarks of Rockwell Automation, Inc.

Trademarks not belonging to Rockwell Automation are property of their respective companies.

Publication LOGIX-SP009B-EN-E - May 2024 | Supersedes Publication LOGIX-SP009A-EN-P - November 2021

Copyright © 2024 Rockwell Automation, Inc. All Rights Reserved.