



**Rockwell
Automation**

Scalable Asset Inventory Management: A Better Way

Introducing **Asset Inventory Manager**

Enterprise-level asset correlation, tracking and alerting



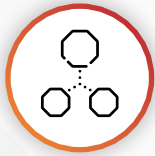
Productivity and Uptime

Enables improved asset utilization and efficiency through proactive lifecycle analysis of the automation assets within the enterprise.



Reduce Downtime, Risk and MTTR

Provide a unified data experience for reviewing and planning proactive maintenance plans. Reduce repair times with device configurations located quickly and efficiently.



Integrate Business Systems

Operationalize the interconnected nature of your facilities by allowing Asset Inventory Manager to automatically trigger computerized maintenance management solution (CMMS) work orders and ERP procurement workflows.



Improve Product Quality

Zero in on improved yield by streamlining change management within your control systems' assets by implemented versioning and tracking of automation assets changes.

What does **Asset Inventory Manager** provide?

A centralized and up-to-date repository of installed automation assets across the enterprise

Capabilities

Automated Installed Base report / Inventory of assets discovered

Firmware information includes release notes, product notices and product service advisories.

Product lifecycle state

Discontinuation date and replacement product.

Notification of hardware changes / faults

Track number of hardware change outs.

Inclusion of offline inventory data

Activation Inventory / Management

Track software usage by device and date.

Integration to existing systems

- Inventory analysis – spare parts by location
- Integration to ERP / CMMS
- Workflows for alerting and system integration



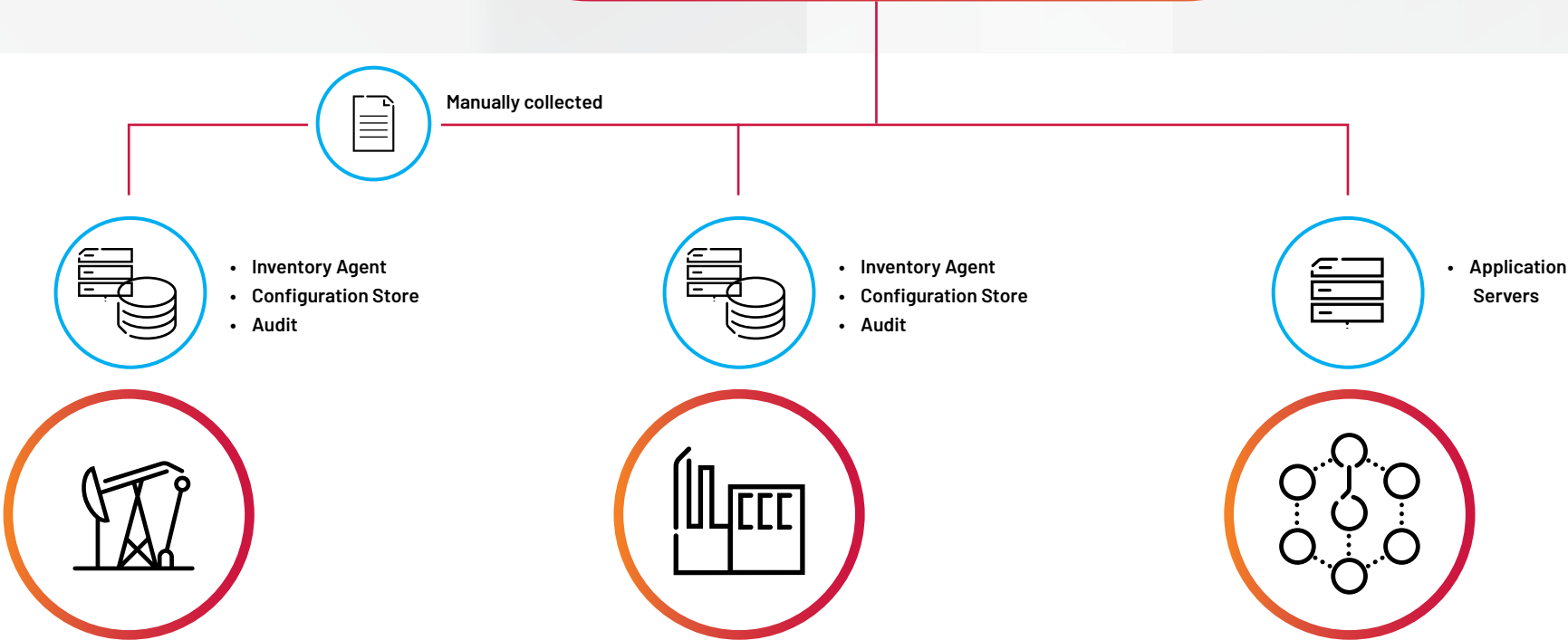
Asset Inventory Manager (AIM) Architecture

Enterprise inventory high-level architecture

CORPORATE



SITES



Helping manufacturers by **reducing asset management challenges**

Costly and **time-consuming manual** hardware counting and evaluation process

All assets are **not connected** but need to be included

Multiple brands and types of assets

Having the **right number of spare parts** at the right location

Maintaining **hardware standards**

Managing and validating system **upgrades and patching**

Understanding and maintaining the **asset lifecycle**



Know *more* about what you have...

A centralized and up-to-date repository of installed automation assets across the enterprise

Automated Installed Base report

- Inventory of assets discovered
 - Third-party assets are discovered
- Firmware metadata display most current minor and major release available
- For each firmware version displayed links are provided:
 - Release Notes
 - Product Notices
 - Product Service Advisories

Product lifecycle state

Discontinuation date and replacement product

Lifecycle analysis

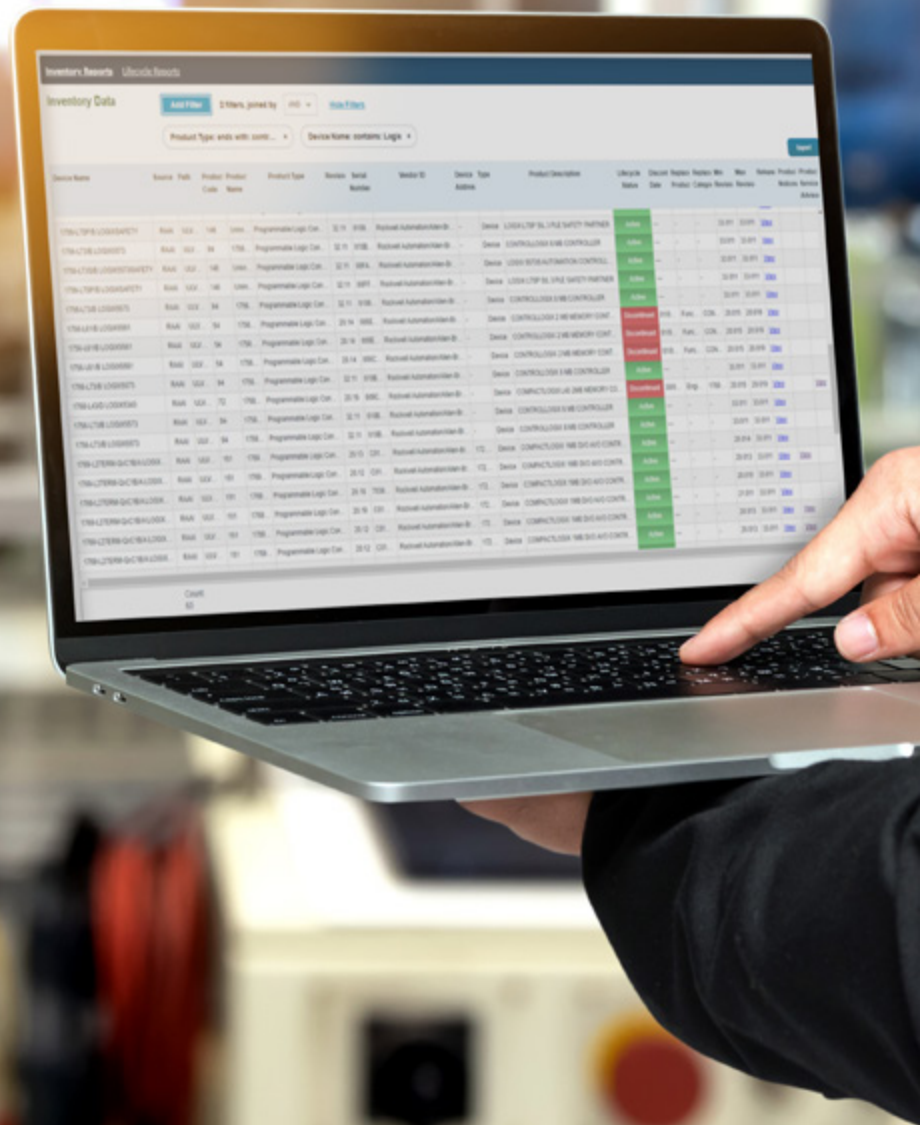
Track number of hardware change outs

- Firmware metadata display most current minor and major release available

Notification of architecture changes

Track hardware faults

Report on the number of hardware change outs



Extract configuration information

Not all assets are connected

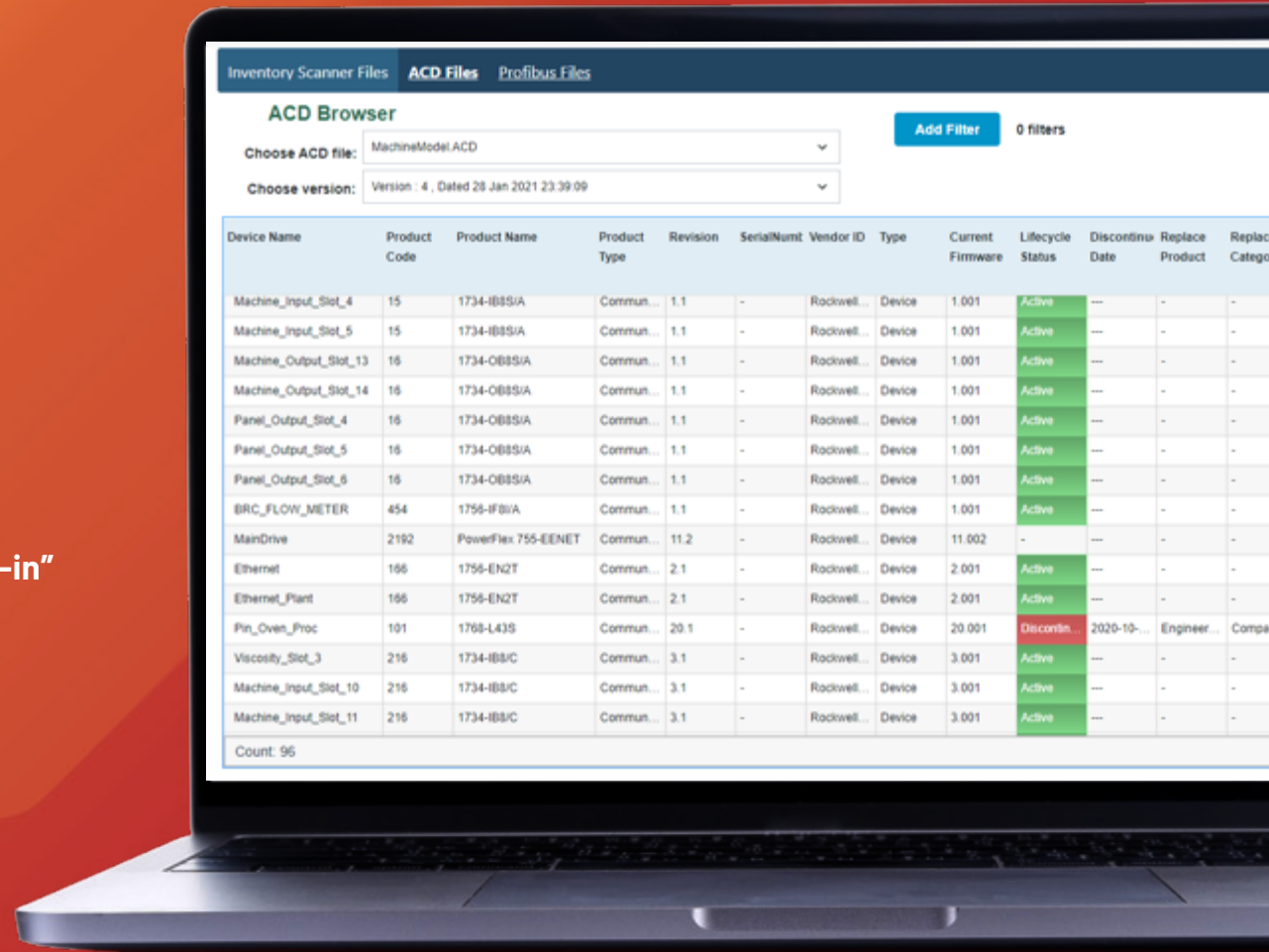
Asset configuration files managed in FactoryTalk® AssetCentre

Extract inventory information from application and files

- Catalog Number
- Series
- Firmware
- I/O module

Automatically trigger collection on “check-in”

Results included in Asset Inventory totals



The screenshot shows the 'ACD Browser' interface with a table of device configuration data. The table has columns for Device Name, Product Code, Product Name, Product Type, Revision, SerialNum, Vendor ID, Type, Current Firmware, Lifecycle Status, Discontinuation Date, Replace Product, and Replace Category. The table lists various devices like Machine_Input_Slot_4, Machine_Output_Slot_13, Panel_Output_Slot_4, BRC_FLOW_METER, MainDrive, Ethernet, Ethernet_Plant, Pin_Oven_Proc, Viscosity_Slot_3, Machine_Input_Slot_10, and Machine_Input_Slot_11. The 'Lifecycle Status' column shows 'Active' for most devices and 'Discontin...' for Pin_Oven_Proc. The 'Discontinuation Date' column shows '2020-10-...' for Pin_Oven_Proc. The 'Count: 96' is displayed at the bottom of the table.

Device Name	Product Code	Product Name	Product Type	Revision	SerialNum	Vendor ID	Type	Current Firmware	Lifecycle Status	Discontinuation Date	Replace Product	Replace Category
Machine_Input_Slot_4	15	1734-IB8S/A	Commun...	1.1	-	Rockwell...	Device	1.001	Active	---	-	-
Machine_Input_Slot_5	15	1734-IB8S/A	Commun...	1.1	-	Rockwell...	Device	1.001	Active	---	-	-
Machine_Output_Slot_13	16	1734-OB8S/A	Commun...	1.1	-	Rockwell...	Device	1.001	Active	---	-	-
Machine_Output_Slot_14	16	1734-OB8S/A	Commun...	1.1	-	Rockwell...	Device	1.001	Active	---	-	-
Panel_Output_Slot_4	16	1734-OB8S/A	Commun...	1.1	-	Rockwell...	Device	1.001	Active	---	-	-
Panel_Output_Slot_5	16	1734-OB8S/A	Commun...	1.1	-	Rockwell...	Device	1.001	Active	---	-	-
Panel_Output_Slot_6	16	1734-OB8S/A	Commun...	1.1	-	Rockwell...	Device	1.001	Active	---	-	-
BRC_FLOW_METER	454	1756-IF8/A	Commun...	1.1	-	Rockwell...	Device	1.001	Active	---	-	-
MainDrive	2192	PowerFlex 755-EENET	Commun...	11.2	-	Rockwell...	Device	11.002	-	---	-	-
Ethernet	166	1756-EN2T	Commun...	2.1	-	Rockwell...	Device	2.001	Active	---	-	-
Ethernet_Plant	166	1756-EN2T	Commun...	2.1	-	Rockwell...	Device	2.001	Active	---	-	-
Pin_Oven_Proc	101	1768-L43S	Commun...	20.1	-	Rockwell...	Device	20.001	Discontin...	2020-10-...	Engineer...	Compa...
Viscosity_Slot_3	216	1734-IB8/C	Commun...	3.1	-	Rockwell...	Device	3.001	Active	---	-	-
Machine_Input_Slot_10	216	1734-IB8/C	Commun...	3.1	-	Rockwell...	Device	3.001	Active	---	-	-
Machine_Input_Slot_11	216	1734-IB8/C	Commun...	3.1	-	Rockwell...	Device	3.001	Active	---	-	-

Count: 96

Know more about your inventory on hand with **Inventory Management**

Total number by part

- Use for spare parts analysis
- Right number of spares at right location
- Identify warehouse items no longer in production

Engineered solution – integration into customer's existing software

Introducing
AIM
PG 2

What does
AIM provide?
PG 3

AIM
architecture
PG 4

Reducing
challenges
PG 5

Know more
about what
you have
PG 6

Extract
configuration
information
PG 7

**Inventory
management
PG 8**

Enterprise
audit
PG 9

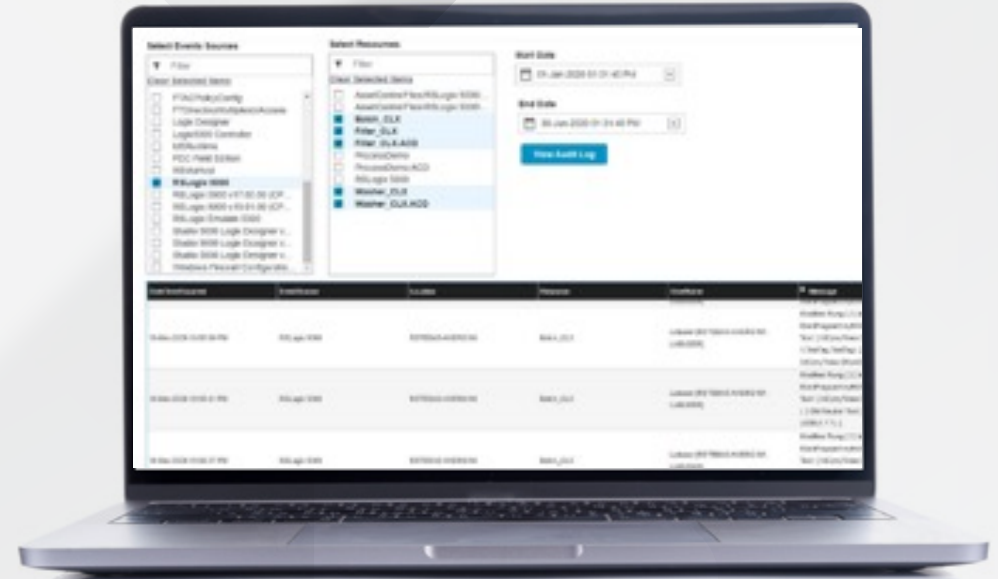
Activation
management
PG 10

AIM
integration
PG 11

Discover a
better way
PG 12

Know who did what with an Enterprise Audit

All user changes are tracked in FactoryTalk® AssetCentre offering a central view of all your audit trail filtering by **resource** or **asset**



ARCHIVE & DISASTER RECOVERY

- **Centrally manage** versions of programs, files and folders
- **Automate** backup of automation assets
- **Generate** detailed difference detection reports of assets

AUDIT

- **Track** user actions – who did what, when, where?
- **Ad-hoc reporting** associating users, assets and programs
- **Automate** the reporting process **via email**

SECURITY

- **Restrict** viewing of artifacts
- **Help prevent** unauthorized access to make changes
- **Help prevent** unauthorized users from **creating new** versions

LIFECYCLE MANAGEMENT

- **View** Rockwell Automation product lifecycle status and inventory for your plant floor devices
- **Compare and detect** changes in deployed plant floor devices

EXTENSIBILITY

- **Ability to extend** and add support for third-party devices
- Web client available to **track assets** from a mobile device

Know more about what is being used with **Activation Management**

Inventory of Rockwell Automation software activations

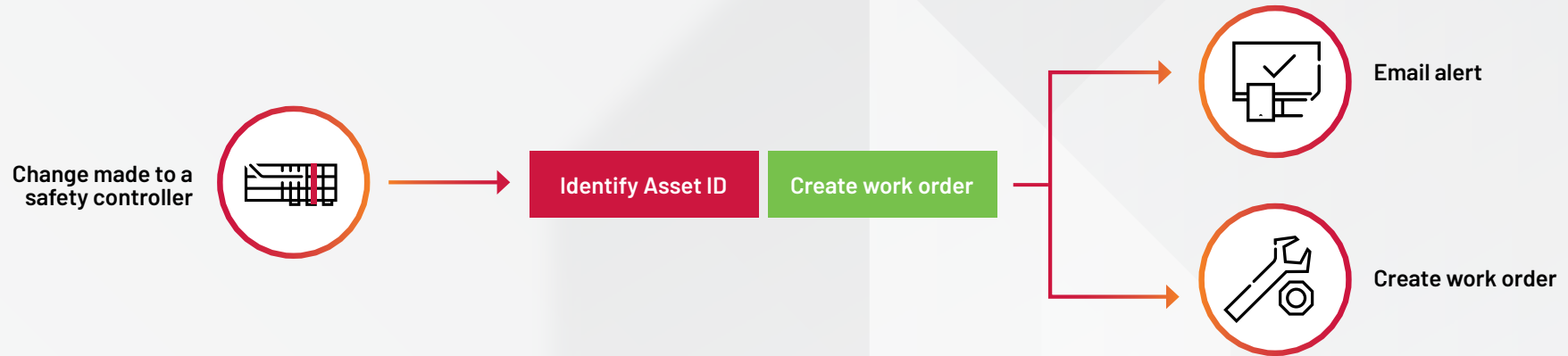
- Product
- Serial number

Audit trail by serial number

- Who used the software
- From which device
- Date and time

AIM offers business systems integration

Application connectivity with customized workflows, enabling seamless integration to systems across your enterprise.



ERP INCORPORATION

Leverage the essential capabilities of **Asset Inventory Manager** to connect to your ERP system, allowing for the operationalization of:

- Automatic procurement of replacement parts
- Removal of replaced hardware from inventory

CMMS SYNCHRONIZATION

Synchronize your automation assets maintenance needs:

- Replacement of automation assets automatically triggered on their lifecycle status
- Achieve asset health and up-to-date configuration with maintenance personnel by alerting on firmware minimum/maximum revision compliance alerts

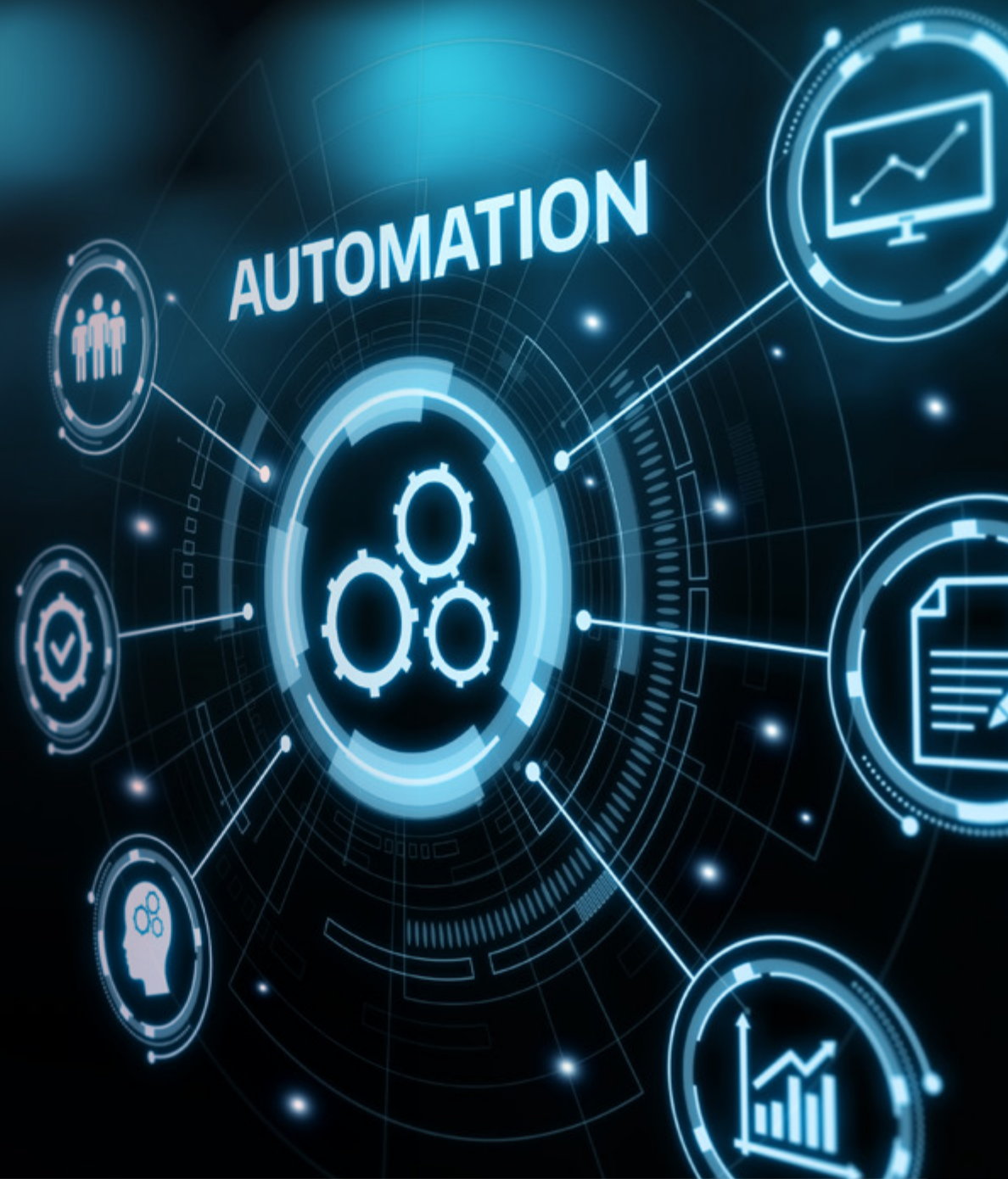
WORKFLOW CREATION

The **Asset Inventory Manager** allows for custom workflow creation to build integrated rules providing the ability to:

- Mitigate risk by enabling alerts for product service advisories to corporate and site-based resources
- Automatically alert specific users when changes are made to an automation asset's configuration

Discover a better way with **Asset Inventory Manager**

- **Increase productivity and uptime**
- **Reduce downtime, risk and MTTR**
- **Integrate business systems**
- **Improve product quality**



Connect with us.

AMERICAS: Rockwell Automation, 1201 South Second Street, Milwaukee, WI 53204-2496 USA, Tel: (1) 414.382.2000, Fax: (1) 414.382.4444

EUROPE/MIDDLE EAST/AFRICA: Rockwell Automation NV, Pegasus Park, De Kleetlaan 12a, 1831 Diegem, Belgium, Tel: (32) 2663 0600, Fax: (32) 2 663 0640

ASIA PACIFIC: Rockwell Automation, No. 2 Corporation Road, Singapore, 618494, Singapore, Tel: (65) 6302 8686, Fax: (65) 6302 8787

UNITED KINGDOM: Rockwell Automation Ltd., Pitfield, Kiln Farm, Milton Keynes, MK11 3DR, United Kingdom, Tel: (44)(1908) 838-800, Fax: (44)(1908) 261-917

Connected Enterprise, expanding human possibility, Asset Inventory Manager, FactoryTalk AssetCentre and Rockwell Automation are trademarks of Rockwell Automation, Inc.
All other trademarks are property of their respective companies.

Publication INFO-SP036A-EN-P - May 2023

Copyright © 2023 Rockwell Automation, Inc. All Rights Reserved. Printed in USA.