

DEVICE OBJECT LIBRARIES APPLICATION CODE LIBRARIES

Reduce risk & time to value with free reusable AOI and HMI faceplate code libraries

Device Object Libraries

REDUCE RISK & TIME TO VALUE WITH FREE REUSABLE AOI & HMI FACEPLATE CODE

Consistency

Unified look and feel across many machines and facilities or delivery partners

Easily follow ISA 101.1 HMI Standards

Build complex control strategies out of basic instructions and devices

Use alongside other Rockwell libraries including PlantPax and Machine Builder

Speed

Accelerate project development with modular code and HMI libraries

Use with **Studio 5000® Application Code Manager** for bulk project configuration

Reduce downtime by providing useful information to operators and maintenance

Ease of commissioning and configuration

Support

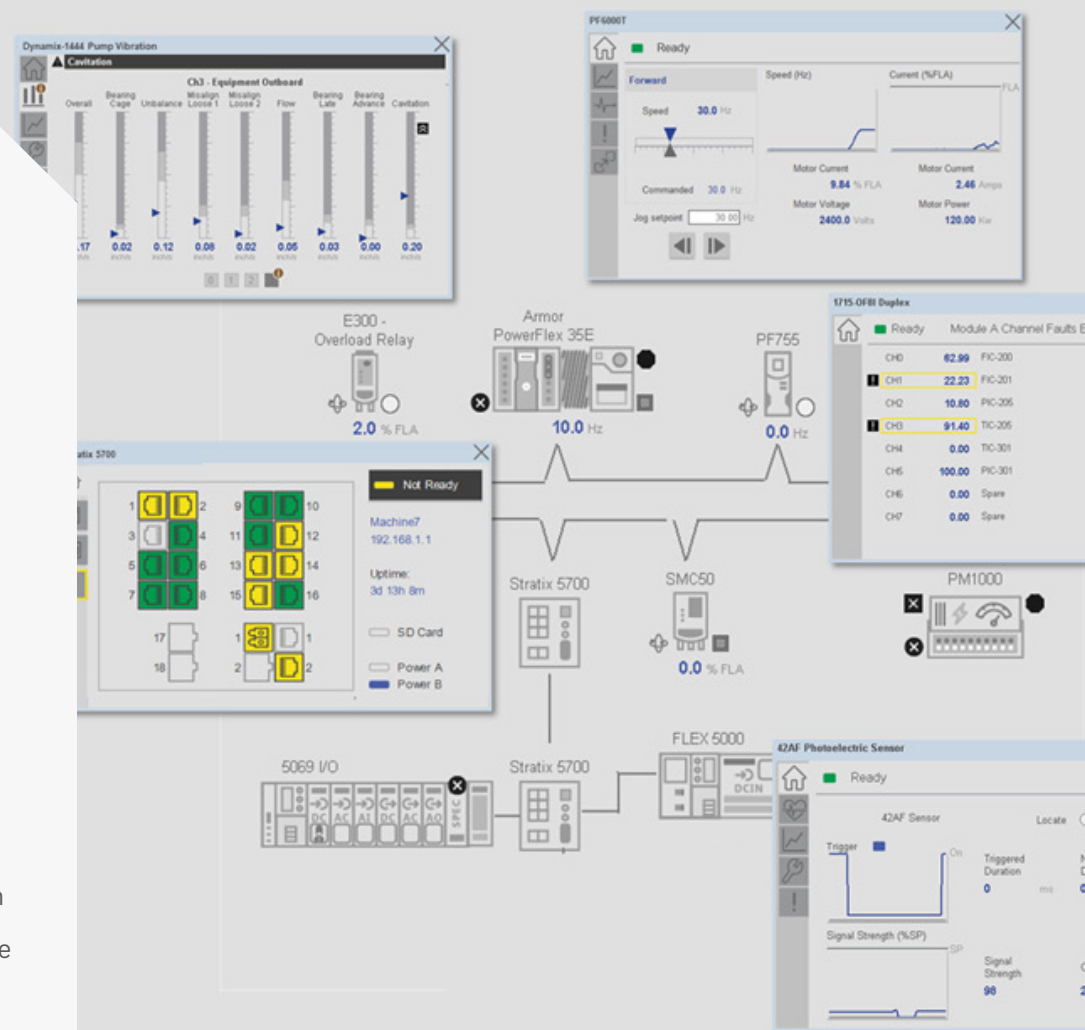
Tested & documented

Supported by TechConnect and KnowledgeBase Globally

No-charge and open for use by any Rockwell System Integrator or end-user

Lifecycle managed

Use with **FactoryTalk® View ME/SE**, or **Studio 5000 View Designer®**



Leverage **information, diagnostics, and predictive indicators** from Rockwell's Intelligent Devices portfolio including **motor control, networking, I/O, and sensor hardware.**

Power Device Library

HMI FACEPLATES AND ADD-ON INSTRUCTIONS FOR MOTOR CONTROL AND ENERGY MONITORING

Discrete Devices

E300™ Electronic Overload Relays

SMC™-50, SMC™ Flex Soft Starters

ArmorStart® 280/281/290/291

Velocity Drives

PowerFlex® 525/753/755/755T/6000T/7000

ArmorStart® 284/294

Armor PowerFlex® 35E/S

Motion Drives

Kinetix® 350/5100/5300/5500 /5700/6500

PowerFlex® 527/755CM

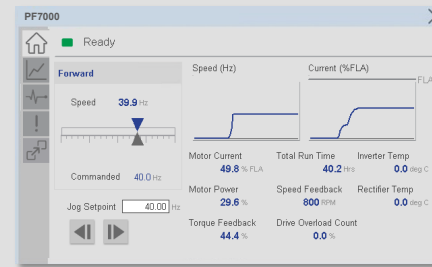
Power & Energy

PowerMonitor™ 500/1000/5000

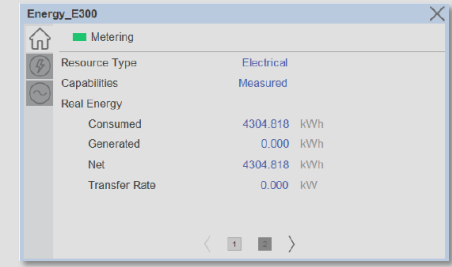
Energy Monitoring for E300™, SMC™-50,
SMC™ Flex, PowerFlex® 525/527/755,
Kinetix® 5500/5700

Special Features:

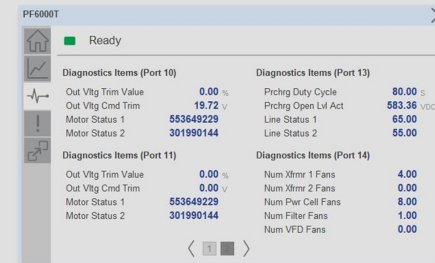
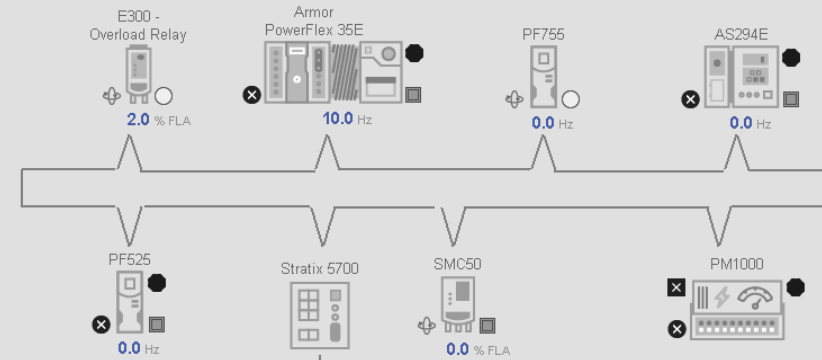
- Common programming interfaces
- Integrate with PlantPAx and Machine Builder Libraries
- Device diagnostics and predictive maintenance
- Simplify commissioning and troubleshooting
- Track last 4 faults with recommended corrective actions
- Graphical symbols for creating system displays
- Use with **Studio 5000®**
Application Code Manager



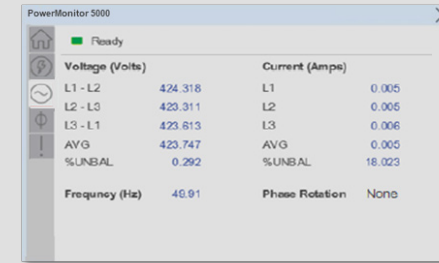
PowerFlex® Drives



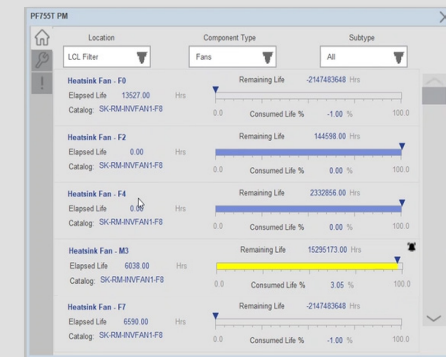
Energy Monitoring



Detailed Diagnostics



PowerMonitor



Predictive Maintenance

IO Device Library

HMI FACEPLATES FOR COMMISSIONING AND TROUBLESHOOTING I/O MODULES

Supported I/O Families

1756 ControlLogix® I/O

1769 Compact I/O™

1734 POINT I/O™

1794 FLEX™ I/O

1738 ArmorPOINT® I/O

1732E ArmorBlock® I/O

1719 Ex I/O

5094 FLEX 5000® I/O

5069 Compact 5000™ I/O

1715 High-Availability I/O

5015 FLEXHA 5000™ I/O

Diagnostics

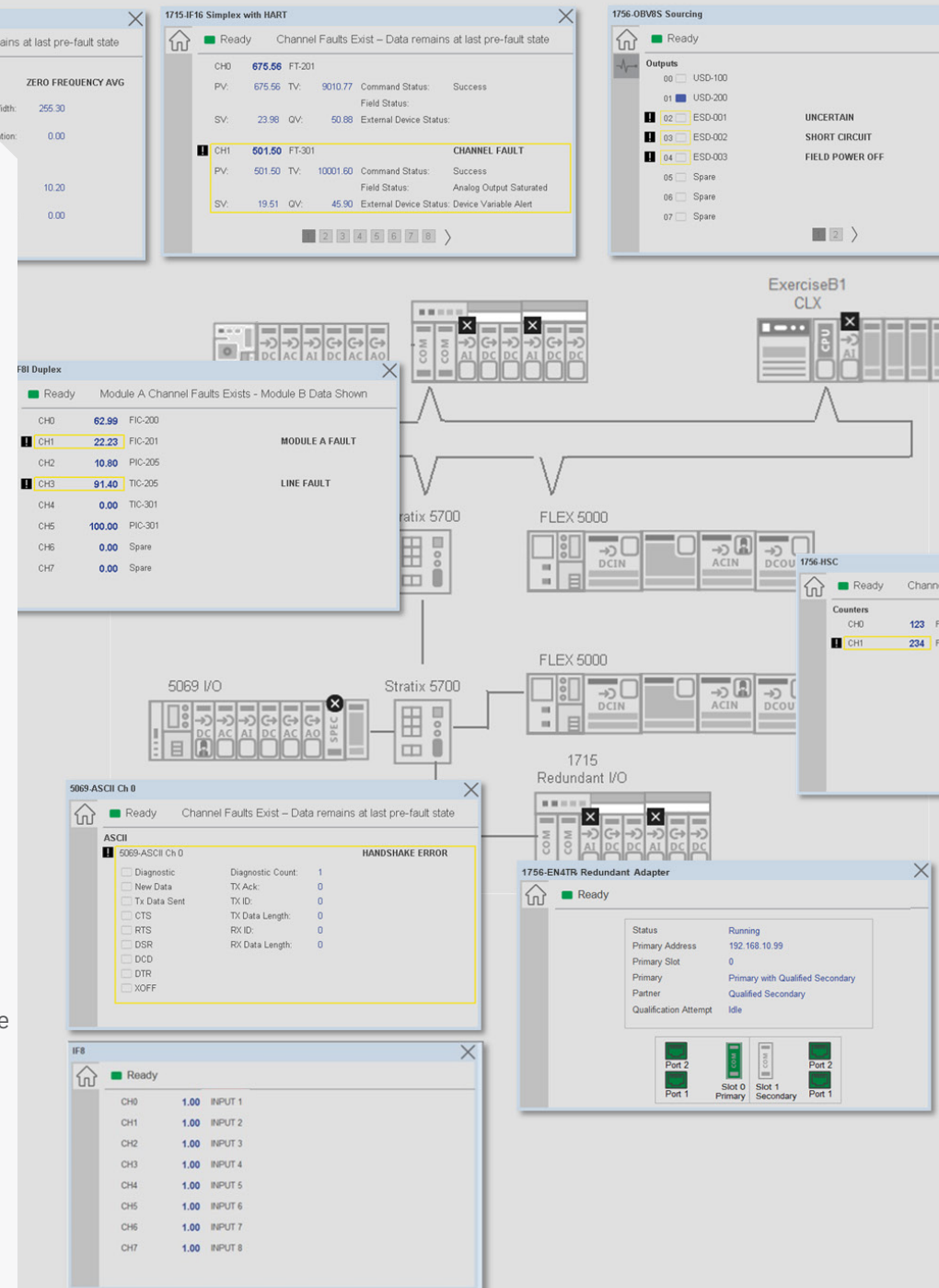
Faceplates include IO channel descriptions

View channel and module diagnostics and status

1756-EN4TR Redundant Adapter faceplate & AOI for redundant network monitoring

Special Features:

- Use with PlantPAX and Machine Builder Libraries
- Channel/Module faults and diagnostics
- Simplify commissioning and troubleshooting
- Graphical symbols for creating system displays
- Use with **Studio 5000® Application Code Manager**
- Choose from 1000+ **HART** instruments in Application Code Manager when using 5015/5094 Analog HART modules
- No Add-on Instructions (AOI) required for I/O modules



IO-Link Device Library

HMI FACEPLATES AND ADD-ON INSTRUCTIONS FOR IO-LINK SENSORS AND MASTERS

IO-Link Sensors

42AF/ 42EF/42JT Photoelectric

45CRM Color Registration Mark

45DMS Distance Measurement

45PLA Polarized Light Array Sensor

46CLR ColorSight True Color Sensor

46DFA Fiber Optic DIN Rail Amplifier

836P Pressure Sensor

837T Solid-State Temp Sensor

856T Tower Light

871FM Proximity Sensor

873P Ultrasonic Sensor

875L Capacitive Proximity Sensor

871C/871TM Inductive Sensor

1694 Elec Circuit Protection

IO-Link Masters

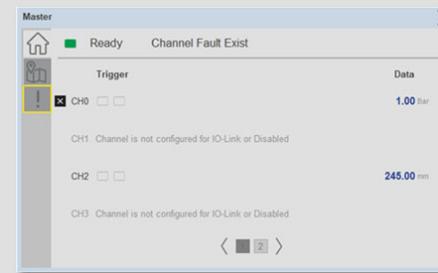
POINT I/O™ 1734-4IOL

ArmorBlock® I/O 1732E-8IOL

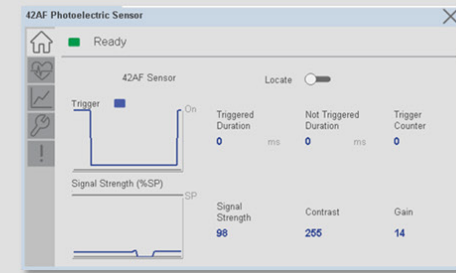
ArmorBlock 5000® I/O 5032-8IOL (Coming Soon)

Special Features:

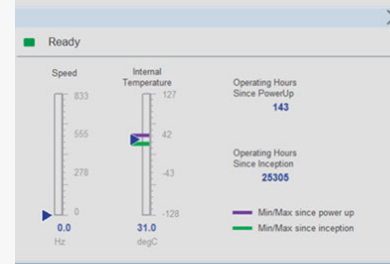
- Common programming interfaces
- Device parameter configuration and trigger teach using HMI
- Use with PlantPax and Machine Builder Libraries
- Device diagnostics and status
- Simplify commissioning and troubleshooting
- Track last 4 faults with recommended corrective actions
- Use with **Studio 5000®** **Application Code Manager**



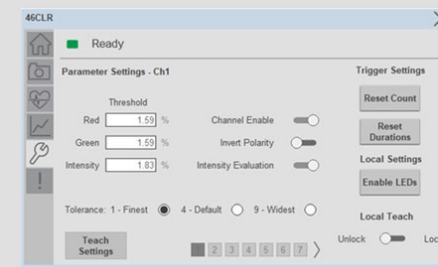
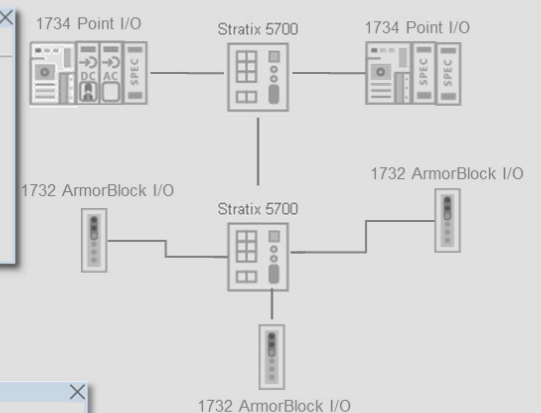
IO-Link Master Monitoring



IO-Link Sensor Status and Readings



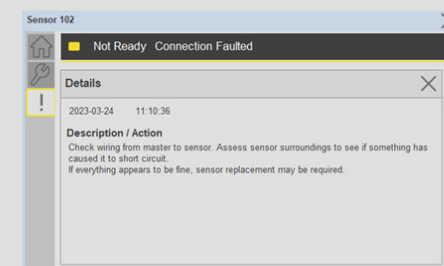
IO-Link Sensor Health



Sensor Configuration & Settings

Severity	Time	Description
Active Fault	1998-03-19 21:32:53	A short circuit was detected
Fault	1998-03-19 21:31:22	Sensor Power Fault
Fault	1998-03-19 21:26:51	Sensor Configuration Fault
Fault	1998-03-19 21:25:13	Sensor is disconnected

Detailed fault history



Safety Device Library

HMI FACEPLATES AND ADD-ON INSTRUCTIONS FOR
GUARDLOGIX SAFETY CLASS CONTROLLERS AND I/O

Safety Instructions

DCS – Dual Channel Input Stop

DCSTL – Dual-Channel Input Stop w/ Test & Lock

DCSTM – Dual Channel Input Stop w/ Test & Mute

CROUT – Configurable Redundant Output

FSBM – 4 Sensor Bi-Dir Muting

SMAT – Safety Mat

THRSe – Two Hand Run Station Enhanced

TSAM – 2 Sensor Asymmetrical Muting

TSSM – 2 Sensor Symmetrical Muting

SFX – Safety Feedback Interface

SS1/SS2 – Safe Stop 1 & 2

STO – Safe Torque Off

Safety Group Monitor

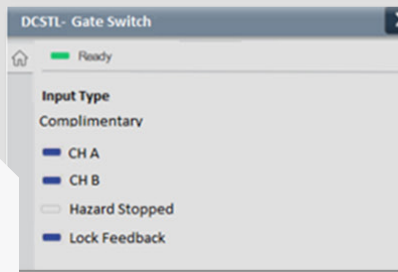
Logically group and monitor up to 32 safety functions

Monitor ID number, demand, reset required, diagnostic, fault, and mute/suspend status

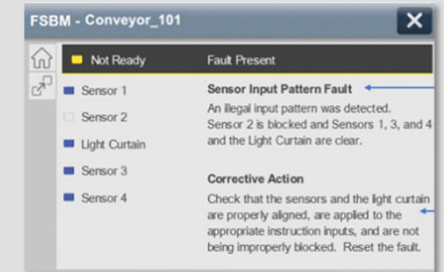
View first out demand and event log

Special Features:

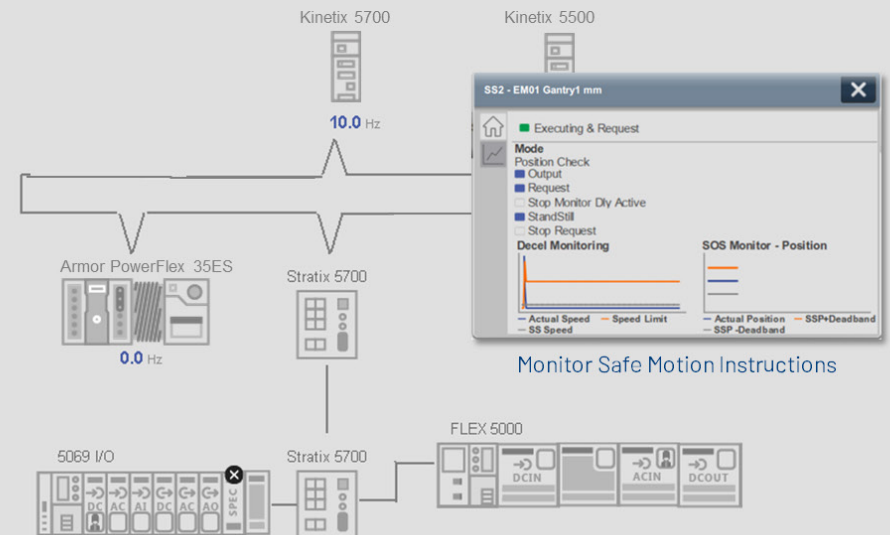
- Common programming interfaces
- Pair with Safety Class instructions for diagnostic monitoring
- Use with Machine Builder Libraries
- Simplify commissioning and troubleshooting
- Monitor safety circuit faults with recommended corrective actions
- Use with **Studio 5000® Application Code Manager**
- Use with **GuardLogix** or **Compact GuardLogix** controllers and Safety Class I/O & drives



Monitor Safety Input Functions



View Safety System Faults & Corrective Actions



Monitor Safe Motion Instructions

Instance ID	Demand	Reset Req	Diagnostic	Fault	Mute / Susp
0					
1					
2					
3					
4					
5					
6					
7					
8					
9					
10					
11					
12					
13					
14					
15					
16					
17					
18					
19					
20					
21					
22					
23					
24					
25					
26					
27					
28					
29					
30					
31					

ID	Source	Type	Event	Status
1	Light Curtain 1	raC_Dvc_DCS	Diagnostics Present	Active

ID	Source	Type	Event	Status
1	Light Curtain 1	raC_Dvc_DCS	Input Suspended	Active
1	Light Curtain 1	raC_Dvc_DCS	Safety Demand	Cleared
3	Light Curtain 3	raC_Dvc_DCS	Diagnostics Present	Cleared
2	Light Curtain 2	raC_Dvc_DCS	Diagnostics Present	Cleared
1	Light Curtain 1	raC_Dvc_DCS	Diagnostics Present	Cleared
5	Area Scanner 1	raC_Dvc_DCSTM	Safety Demand	Active
4	Front Gate	raC_Dvc_DCSTL	Safety Demand	Active
3	Light Curtain 3	raC_Dvc_DCS	Safety Demand	Active
2	Light Curtain 2	raC_Dvc_DCS	Safety Demand	Active
1	Light Curtain 1	raC_Dvc_DCS	Safety Demand	Active

Safety Group Monitor

Condition Monitoring Device Library

Equipment Monitoring

Use with **Dynamix™ 1444 Condition Monitoring** modules

Easily configure and monitor rotating equipment frequency analysis for predictive maintenance

Apply to Rolling Element Bearing Pumps

Monitor:

- Overall vibration
- Bearing Issues
- Unbalance
- Misalignment/Looseness
- Flow issues and cavitation

Diagnostics

View, configure and trend readings and limits for 4 measurement channels each with 8 bands

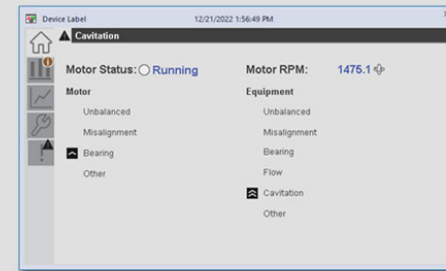
Trend all frequency bands

Monitor warning and critical warning indications for condition-based maintenance

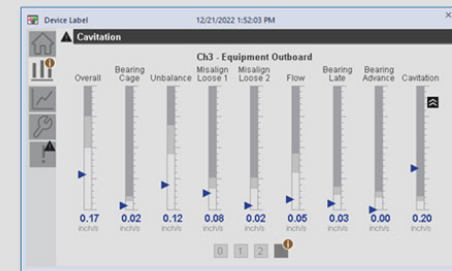
View first out demand and event log

Special Features:

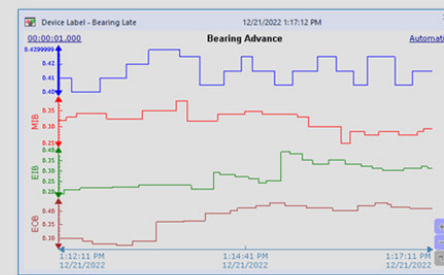
- Common programming interfaces
- Integrate with PlantPax and Machine Builder Libraries
- Device diagnostics and predictive maintenance
- Simplify commissioning and troubleshooting
- Track last 4 vibration events with recommended corrective actions
- Graphical symbols for creating system displays
- Use with **Studio 5000® Application Code Manager** for simplified configuration with limited expertise



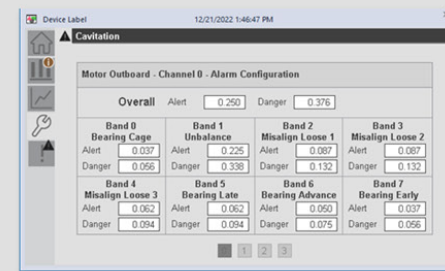
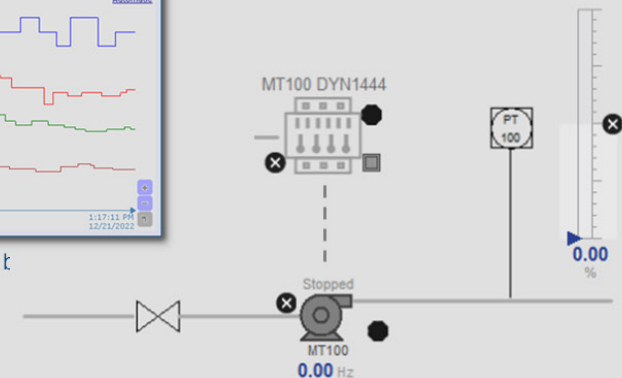
Monitor overall machine status



View FFT bands with Alert/Danger Warnings



Trend 4 ch x 8 FFT k



Custom warning configuration

Severity	Time	Description
Active	2022-12-21 13:29:21	Cavitation Condition Detected
Danger	2022-12-21 13:29:02	Possible cavitation or starvation.
Danger	2022-12-21 13:28:21	Motor Outboard Bearing (MOB) - Advanced Stage Bearing Fault
Danger	2022-12-21 13:28:21	Misalignment Condition Detected
Alert	2022-12-21 13:27:55	Motor Outboard Bearing (MOB) - Advanced Stage Bearing Fault

Detailed fault history

Where Can I Get the Libraries?

All Device Object Libraries can be downloaded for free from Rockwell Automation's [Product Compatibility and Download Center](#). Search "Device Object Libraries" to download the current releases.

Also see these great libraries:

- Process Library (PlantPAx)
- Machine Builder Libraries
- Mettler Toledo Device Library
- Robotics Library
- Independent Cart Technology Libraries
- Common Application Libraries



Allen-Bradley and Application Builder are trademarks of Rockwell Automation, Inc. Trademarks not belonging to Rockwell Automation are property of their respective companies.

www.rockwellautomation.com

Power, Control and Information Solutions Headquarters

Americas: Rockwell Automation, 1201 South Second Street, Milwaukee, WI 53204-2496 USA, Tel: (1) 414.382.2000, Fax: (1) 414.382.4444

Europe/Middle East/Africa: Rockwell Automation NV, Pegasus Park, De Kleetlaan 12a, 1831 Diegem, Belgium, Tel: (32) 2 663 0600, Fax: (32) 2 663 0640

Asia Pacific: Rockwell Automation, Level 14, Core F, Cyberport 3, 100 Cyberport Road, Hong Kong, Tel: (852) 2887 4788, Fax: (852) 2508 1846