

PowerFlex 22-HIM-A3 and 22-HIM-C2S Series C HIM Revision 4.001

IMPORTANT PowerFlex 22-HIM-A3/-C2S Series B HIM revisions do not exist. Series B was intentionally skipped.

This release note describes major revision 4, minor revision 1 of firmware for the PowerFlex 22-HIM-A3 and 22-HIM-C2S Series C HIM (Human Interface Module).

IMPORTANT Firmware 4.001 can only be updated into a 22-HIM-A3/-C2S Series C HIM and is not compatible with a 22-HIM-A3/-C2S Series A HIM. Conversely, firmware 2.006 or earlier is not compatible with a 22HIM-A3/-C2S Series C HIM.

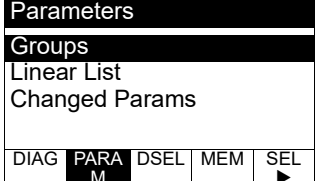
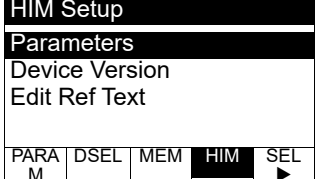
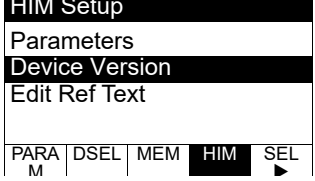
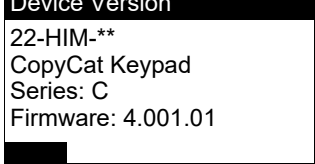
The following information is included in this document:

Topic	Page
Determining the Firmware Revision	2
Updating the Firmware	5
Enhancements	9
Corrected Anomalies	9
Restrictions	9
Compatible Versions	9
Additional Resources	9

Determining the Firmware Revision

Follow these steps to determine the firmware revision of your PowerFlex 22-HIM-A3 or 22-HIM-C2S Series C HIM.


Using the External 22-HIM-A3 or 22-HIM-C2S HIM

Step	Example Screens
1. Power up the drive. 2. Plug the HIM into the drive. The Parameters menu for the drive will be displayed.	
3. Press the Sel (Sel) key until the HIM Setup menu is displayed.	
4. Press the Down Arrow key to scroll to Device Version .	
5. Press the Enter key to display the present firmware version of the HIM, shown on the Firmware line.	

Using DriveExplorer Lite/Full Software

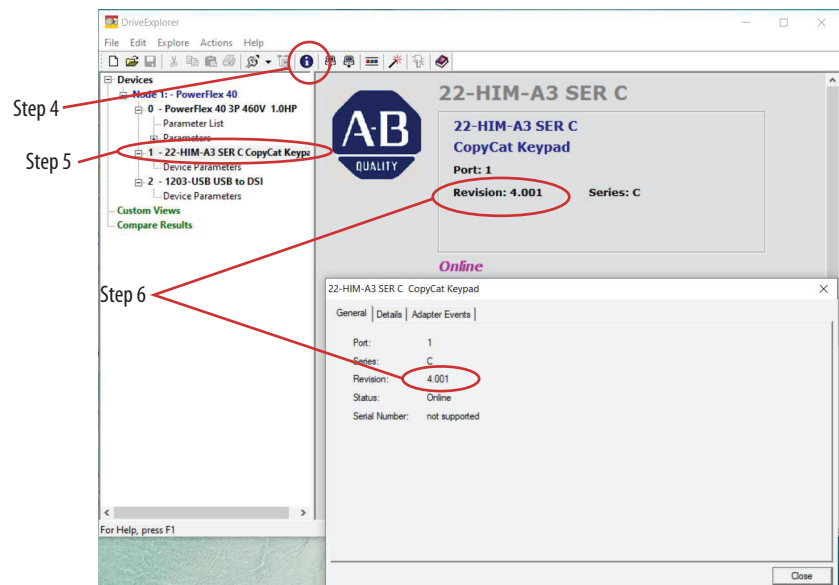
1. Launch DriveExplorer™ software.
2. Using a 1203-USB or 22-SCM-232 converter, go online with the drive that is connected to the HIM.

As an alternative when using DriveExplorer Full software, you can go online with the drive on Ethernet through a connected 22-COMM-E communication adapter.

3. In the DriveExplorer treeview, select the 22-HIM-xx SER C (see [Figure 1](#)).
4. Click the information icon  to display the HIM Properties screen.
5. The 'Revision' field shows the present revision of the HIM firmware (for example, 4.001).

TIP When selecting the 22-HIM-xx SER C using DriveExplorer Lite or Full software, version 5.01 or later, the HIM firmware revision is also shown in the right pane of the DriveExplorer window.

Figure 1 - DriveExplorer Window with Information Icon and Device Properties



Using DriveExecutive Software


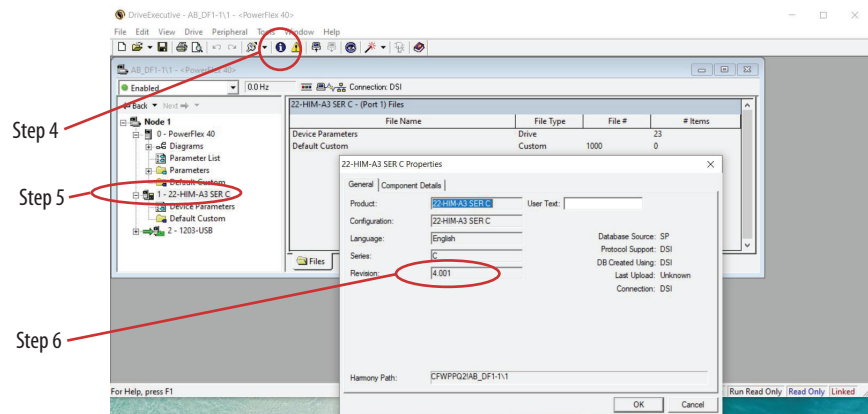
1. Launch DriveExecutive™.
2. Using a 1203-USB or 22-SCM-232 converter, go online with the drive that is connected to the HIM.
3. In the DriveExecutive treeview, select the 22-HIM-xx SER C (see [Figure 2](#)).
4. Click the information icon  to display the HIM Properties screen.
5. The 'Revision' field shows the present revision of the HIM firmware (for example, 4.001).

Figure 2 - DriveExecutive Window with Information Icon and Device Properties



Updating the Firmware

This section describes procedures to update the HIM firmware. Flash kits for drives, communications adapters, and peripherals are provided on the Product Compatibility and Download Center (rok.auto/pcdc). Updating can be performed using a 1203-USB or 22-SCM-232 converter. For information about how to connect to your drive, see their respective User Manual. They can be viewed/downloaded on the Literature Library website (rok.auto/literature).




ATTENTION: Risk of permanent equipment damage exists. Once an update has been started, do not remove power from the drive until after the download has completed and the HIM has re-initialized with the connected drive. If power is removed before this occurs, the HIM may be permanently damaged. A HIM that has been damaged in this way cannot be repaired.

Installing the Flash Kit

1. Go to the Product Compatibility and Download Center (rok.auto/pcdc) and install the flash kit for the *22-HIM-Ax – 22-HIM-Cx (series C)*, which also automatically installs the ControlFLASH™ software on your computer.
2. You are now ready to use DriveExplorer, DriveExecutive, ControlFLASH or HyperTerminal software to update the HIM. See the following sections for instructions.


Using DriveExplorer Lite/Full Software to Update Firmware

1. With the Flash Kit installed (see [Installing the Flash Kit](#)), launch DriveExplorer software.
2. Using a 1203-USB or 22-SCM-232 converter, go online with the drive that is connected to the HIM.
3. In the DriveExplorer treeview, select the 22-HIM-xx SER C HIM.
4. Click the information icon  (see [Figure 1](#)) to display the HIM Properties screen.
5. On the HIM Properties screen, click the Details tab.

IMPORTANT This update may cause the HIM parameters to revert to their default values. You may want to save your configuration using DriveExplorer software or the HIM CopyCat feature before updating.

6. Click Flash Update to start the update.
7. Select '4.001.xx' from the list of available updates.
8. Click Next >.
9. Follow the remaining screen prompts until the update procedure completes and displays the new firmware revision 4.001.

Using DriveExecutive Software to Update Firmware

1. With the Flash Kit installed (see [Installing the Flash Kit](#)), launch DriveExecutive software.
2. Using a 1203-USB or 22-SCM-232 converter, go online with the drive that is connected to the HIM.
3. In the DriveExecutive treeview, select the 22-HIM-xx SER C HIM.
4. Click the information icon  (see [Figure 2](#)) to display the HIM Properties screen.
5. On the HIM Properties screen, click the Component Details tab.

IMPORTANT This update may cause the HIM parameters to revert to their default values. You may want to save your configuration using DriveExecutive software or the HIM CopyCat feature before updating.

6. Click Flash Update to start the update.
7. Select the 22-HIM-xx SER C from the list of available devices.
8. Click Next >.
9. Select '4.001.xx' from the list of available updates.
10. Click Next >.
11. Follow the remaining screen prompts until the update procedure completes and displays the new firmware revision 4.001.

Using ControlFLASH Software to Update Firmware

1. With the Flash Kit installed (see [Installing the Flash Kit on page 5](#)), choose Start > (All) Programs > Flash Programming Tools > ControlFLASH to launch the ControlFLASH software.
2. On the ControlFLASH Welcome screen, click Next >.
3. Choose the appropriate 22-HIM-Ax update (even though, for example, you may be updating a 22-HIM-C2S) from the list of available updates.
4. Click Next>.

IMPORTANT This update may cause the HIM parameters to revert to their default values. You may want to save your configuration using the HIM CopyCat feature, or DriveExplorer or DriveExecutive software before updating.

5. Expand the treeview for the communication path you are using, and select the drive icon that represents the drive connected to the HIM you are updating.
6. Click OK.

7. If the Multiple Assemblies Found window appears, select 'Port X - 22-HIM-xx SER C' from the list and click OK. If this window does not appear, proceed with step 8.
8. With the Firmware Revision window displayed, select '4.001.xx' from the list of available updates.
9. Click Next >.
10. Follow the remaining screen prompts until the update procedure completes and displays the new firmware revision 4.001.

Using HyperTerminal Software to Update Firmware

1. With the Flash Kit installed (see [Installing the Flash Kit on page 5](#)), launch HyperTerminal software.
2. Using a 1203-USB or 22-SCM-232 converter, go online with the drive that is connected to the HIM.
3. Press Enter until the main menu appears.

```

Main Menu - Enter Number for Selection
1> Display Setup Parameters
2> Display Event Queue
3> Flash Upgrade

```

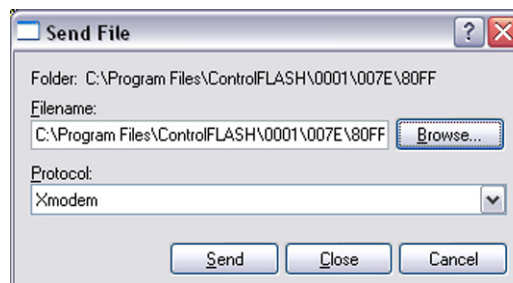
4. In the main menu, press '3' to flash upgrade.
5. Press the number key that corresponds to the '22-HIM-xx SER C' in the list.
6. Press 'Y' (for Yes) to update the firmware.

The terminal program will start displaying the letter 'C'. This signals the Xmodem protocol that the download may proceed. You then have one minute to start the transfer.



ATTENTION: Risk of injury or equipment damage exists. When you perform an update, the drive will fault if it is receiving control I/O from the HIM. Verify that the drive has stopped safely or is receiving control I/O from an alternate source before beginning an update.

7. From the Transfer menu, choose Send File to display the Send File screen.



- a. Click Browse.
- b. Navigate to the flash file located in C:\ Program Files\
ControlFLASH\0001\0088\81FF
- c. In the Select File to Send window list, select the '22-HIM-Ax BOOT
2.001.06.bin' file.
- d. Click Open.
- e. This file name now appears in the Filename box in the Send File screen.
- f. From the Protocol pull-down menu, choose 'Xmodem'.
- g. Click Send.

A dialog box appears and reports the update progress. When complete, a 'Flash Complete' message appears. Press any key to continue.

IMPORTANT Keep the HIM powered for 15 seconds after the operation has completed or until the HIM has re-initialized with the drive.

TIP To cancel the flash update at any time, press CTRL-X.

8. Repeat steps 3 through 7 for the '22-HIM-Ax APP 4.001.07.bin' file.
9. Press the Enter key to return to the main menu.

Enhancements

This section describes the enhancements included in this firmware version:

New Parameter #23

Switches the display of AUTO/MAN on the status bar of the HIM LCD screen.

Corrected Anomalies

There are no anomalies corrected in this revision of firmware.

Restrictions

No restrictions apply to this revision of firmware.

Compatible Versions

To use this revision of firmware, update your system tools as follows:

Tool/Device	Version Required
DriveExplorer Lite/Full software	4.01 or later
DriveExecutive software	3.01 or later
PowerFlex 4-Class drive	all versions compatible
External 22-HIM-xx Series C HIM	all versions compatible
RSLinx® Classic software	2.51 or later

Additional Resources

These documents contain additional information concerning related products from Rockwell Automation.

Resource	Description
Industrial Automation Wiring and Grounding Guidelines, publication 1770-4.1	Provides general guidelines for installing a Rockwell Automation industrial system.
Product Certifications website, http://www.rockwellautomation.com/global/certification/overview.page	Provides declarations of conformity, certificates, and other certification details.
PowerFlex 4-Class HIM (DSI) Quick Reference, publication 22HIM-QR001-EN-P	Provides display descriptions, key descriptions, information about the menu navigation tabs, and a parameter list for the PowerFlex 4-Class HIM (DSI) Human Interface Modules (HIM).

You can view or download publications at rok.auto/literature. To order paper copies of technical documentation, contact your local Rockwell Automation sales representative.

Rockwell Automation Support

Use the following resources to access support information.

Technical Support Center	Knowledgebase Articles, How-to Videos, FAQs, Chat, User Forums, and Product Notification Updates.	https://rockwellautomation.custhelp.com/
Local Technical Support Phone Numbers	Locate the phone number for your country.	http://www.rockwellautomation.com/global/support/get-support-now.page
Direct Dial Codes	Find the Direct Dial Code for your product. Use the code to route your call directly to a technical support engineer.	http://www.rockwellautomation.com/global/support/direct-dial.page
Literature Library	Installation Instructions, Manuals, Brochures, and Technical Data.	http://www.rockwellautomation.com/global/literature-library/overview.page
Product Compatibility and Download Center (PCDC)	Get help determining how products interact, check features and capabilities, and find associated firmware.	http://www.rockwellautomation.com/global/support/pcdc.page

Documentation Feedback

Your comments will help us serve your documentation needs better. If you have any suggestions on how to improve this document, complete the How Are We Doing? form at http://literature.rockwellautomation.com/idc/groups/literature/documents/du/ra-du002_-en-e.pdf.

Rockwell Automation maintains current product environmental information on its website at <http://www.rockwellautomation.com/rockwellautomation/about-us/sustainability-ethics/product-environmental-compliance.page>.

Allen-Bradley, ControlFLASH, DriveExecutive, DriveExplorer, PowerFlex, Rockwell Automation, Rockwell Software, and RSLinx are trademarks of Rockwell Automation, Inc. Trademarks not belonging to Rockwell Automation are property of their respective companies.

Rockwell Otomasyon Ticaret A.Ş., Kar Plaza İş Merkezi E Blok Kat:6 34752 İçerenköy, İstanbul, Tel: +90 (216) 5698400

www.rockwellautomation.com

Power, Control and Information Solutions Headquarters

Americas: Rockwell Automation, 1201 South Second Street, Milwaukee, WI 53204-2496 USA, Tel: (1) 414.382.2000, Fax: (1) 414.382.4444
Europe/Middle East/Africa: Rockwell Automation NV, Pegasus Park, De Kleetlaan 12a, 1831 Diegem, Belgium, Tel: (32) 2 663 0600, Fax: (32) 2 663 0640
Asia Pacific: Rockwell Automation, Level 14, Core F, Cyberport 3, 100 Cyberport Road, Hong Kong, Tel: (852) 2887 4788, Fax: (852) 2508 1846

Publication 22HIM-RN004B-EN-P - August 2021

Supersedes Publication 22HIM-RN004A-EN-P - September 2012

Copyright © 2021 Rockwell Automation, Inc. All rights reserved. Printed in the U.S.A.