

QUICK START GUIDE

USB TO SERIAL ADAPTER

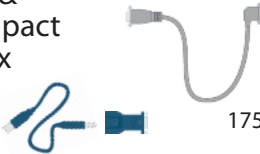
KIT CONTENTS

9300-USBS



Connections

CLX &
Compact
Logix

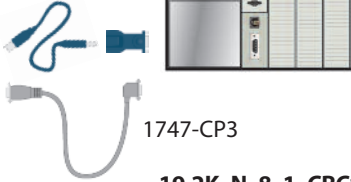


1756-CP3



19.2K, N, 8, 1, BCC*

SLC



1747-CP3

19.2K, N, 8, 1, CRC*

MicroLogix



1761-CBL-PM02

19.2K, N, 8, 1, CRC*

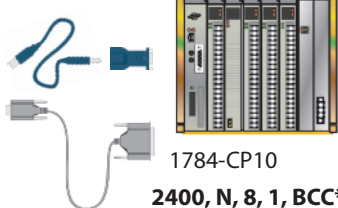
PanelView



2711-NC13

19.2K, N, 8, 1, CRC*

PLC-5



1784-CP10

2400, N, 8, 1, BCC*

*Default settings

LISTEN.
THINK.
SOLVE.

Drives

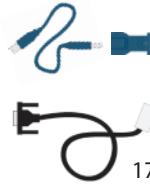


1203-SSS or 22-SCM-232

9600, N, 8, 1, (CRC or BCC)*



Pico & Pico GFX



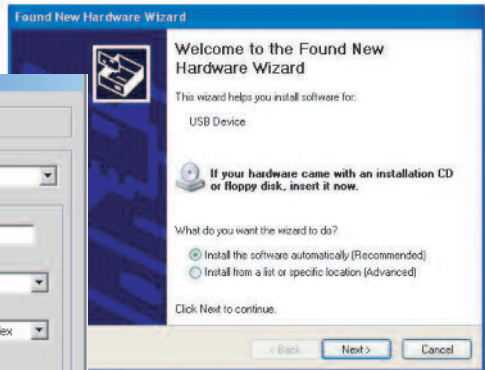
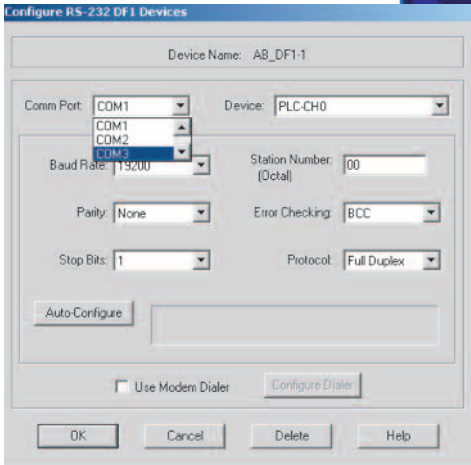
1760-CBL-PM02/PC02

9600, N, 8, 1, (CRC or BCC)*



To Begin Install:

Insert the 9300-USBS into the computer's USB port and the 9300-USBS Driver Disc into the CD drive.



Note:
The 9300-USBS
Does Not support the 1747-PIC
(use the 1747-UIC)

For more information go to: www.rockwellautomation.com