



FactoryTalk Edge Manager Quick Start Guide

Version 1.00.00

Rockwell Automation Publication 95055-QS003A-EN-P - April 2023



Important User Information

Read this document and the documents listed in the additional resources section about installation, configuration, and operation of this equipment before you install, configure, operate, or maintain this product. Users are required to familiarize themselves with installation and wiring instructions in addition to requirements of all applicable codes, laws, and standards.

Activities including installation, adjustments, putting into service, use, assembly, disassembly, and maintenance are required to be carried out by suitably trained personnel in accordance with applicable code of practice.

If this equipment is used in a manner not specified by the manufacturer, the protection provided by the equipment may be impaired.

In no event will Rockwell Automation, Inc. be responsible or liable for indirect or consequential damages resulting from the use or application of this equipment.

The examples and diagrams in this manual are included solely for illustrative purposes. Because of the many variables and requirements associated with any particular installation, Rockwell Automation, Inc. cannot assume responsibility or liability for actual use based on the examples and diagrams.

No patent liability is assumed by Rockwell Automation, Inc. with respect to use of information, circuits, equipment, or software described in this manual.

Reproduction of the contents of this manual, in whole or in part, without written permission of Rockwell Automation, Inc., is prohibited.

Throughout this manual, when necessary, we use notes to make you aware of safety considerations.



WARNING: Identifies information about practices or circumstances that can cause an explosion in a hazardous environment, which may lead to personal injury or death, property damage, or economic loss.



ATTENTION: Identifies information about practices or circumstances that can lead to personal injury or death, property damage, or economic loss. Attentions help you identify a hazard, avoid a hazard, and recognize the consequence.

IMPORTANT Identifies information that is critical for successful application and understanding of the product.

Labels may also be on or inside the equipment to provide specific precautions.



SHOCK HAZARD: Labels may be on or inside the equipment, for example, a drive or motor, to alert people that dangerous voltage may be present.



BURN HAZARD: Labels may be on or inside the equipment, for example, a drive or motor, to alert people that surfaces may reach dangerous temperatures.



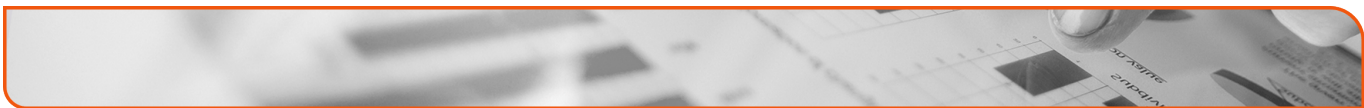
ARC FLASH HAZARD: Labels may be on or inside the equipment, for example, a motor control center, to alert people to potential Arc Flash. Arc Flash will cause severe injury or death. Wear proper Personal Protective Equipment (PPE). Follow ALL Regulatory requirements for safe work practices and for Personal Protective Equipment (PPE).

Rockwell Automation recognizes that some of the terms that are currently used in our industry and in this publication are not in alignment with the movement toward inclusive language in technology. We are proactively collaborating with industry peers to find alternatives to such terms and making changes to our products and content. Please excuse the use of such terms in our content while we implement these changes.

Table of Contents

	Read Me First	3
	Audience	4
	Conventions	4
	Assumptions.....	4
Chapter 1	Getting Started.....	5
	Install the Device	6
	Onboard a Device	6
	Additional Resources	10

This page has been intentionally left blank



Read Me First

In this chapter:

- Audience 4
- Conventions 4
- Assumptions 4

Audience

This document shall be utilized following the successful installation of the FactoryTalk Edge node. Installation instructions are provided within the box. This quick start guide provides necessary instructions for connecting the edge node to the local network along with onboarding within FactoryTalk Edge Manager user interface. After successful completion of onboarding the edge node, users should reference the FactoryTalk Edge Manager User Guide linked at the bottom of the manual.

Conventions

The following conventions are followed in this document:

- ❑ Text, labels and icon names that appear in the user interface appear in square brackets. For example: On the Left Navigation panel, select [Edge Nodes] and then select the [+] icon.
- ❑ The URLs and links appear in Blue text. For example:
<https://helpdesk.cloud.rockwellautomation.com/>

Assumptions

It is assumed that your hardware device is verified by Rockwell Automation. For hardware device verification, contact Rockwell Automation Support.



Chapter

1

Getting Started

In this chapter:

- Install the Device** 6
- Onboard a Device** 6
- Additional Resources** 10

Install the Device

1. Unbox and install the Edge Node device as per the instructions given within the ASEM 6300B Box PCs document.
2. Connect an Ethernet cable from port **Eth1** on the Edge node to a managed switch.

NOTE: Ensure the managed switch has access to a DHCP server along with an active path to the Internet for HTTPS traffic.

NOTE: If a DHCP server is not present on-site, follow the link below to set a static IP address for the edge node:

<https://help.zededa.com/hc/en-us/articles/8341291771419-EVE-Network-Bootstrap>

Onboard a Device

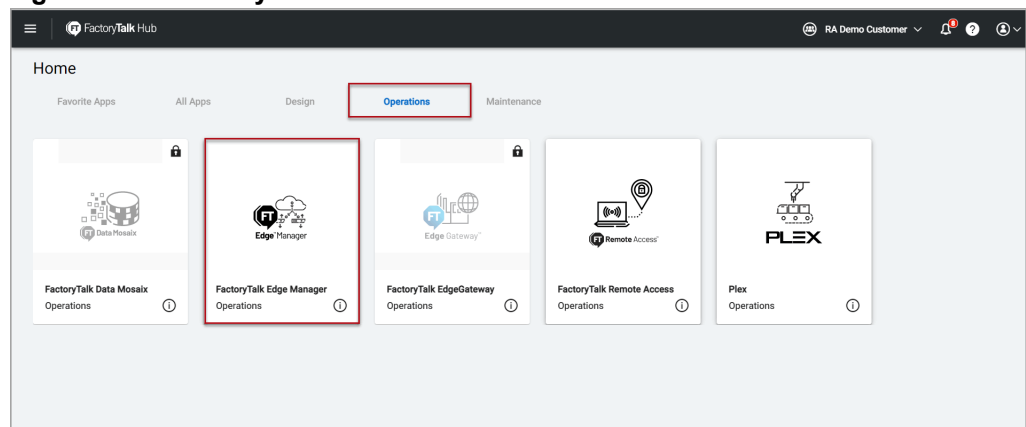
Perform the following steps to Onboard a Device:

1. Login to the FactoryTalk Hub (<https://home.cloud.rockwellautomation.com>) using your Rockwell Credentials.

NOTE: Ensure that you have access and logged into FactoryTalk Hub along with allocating entitlement(s) for FactoryTalk Edge Manager. This will be required for the onboarding process. Please see the following FactoryTalk Hub manual for more instructions
<https://helpdesk.cloud.rockwellautomation.com/>.

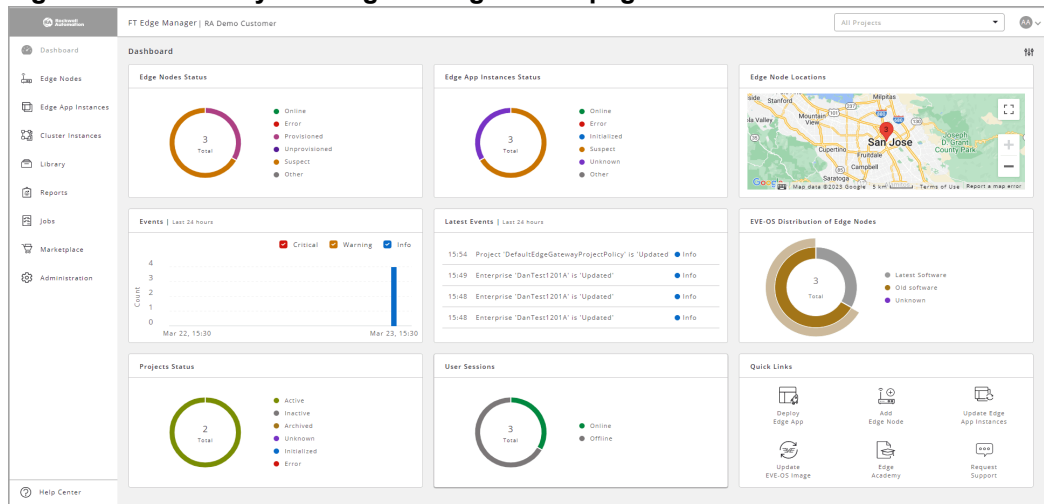
2. Under the Operations Hub tab, select the FactoryTalk Edge Manager tile.

Figure 1-1: FactoryTalk Hub



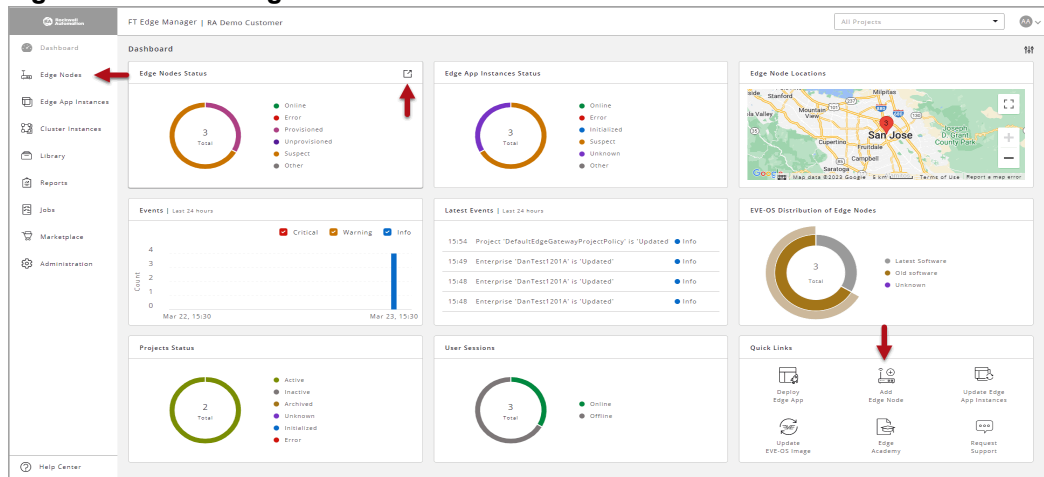
The FactoryTalk Edge Manager home page displays.

Figure 1-2: FactoryTalk Edge Manager homepage



3. Navigate to [Add Edge Node] window by any one of the following method:
 - On the Dashboard, expand the Edge Node Status tile and then click the [+] icon.
 - On the Quick links tile, click [Add Edge Node].
 - On the Left Navigation panel, click [Edge Nodes] and then click the [+] icon.

Figure 1-3: Add Edge Node



4. Provide the following details in the Identity section:
 - **Name:** Provide a unique name. This cannot be changed.
 - **Title:** Provide a title. This can be changed.
 - **Project:** Select the Project from drop-down list.
 - **Description:** A detailed explanation about the Edge Node.

Figure 1-4: Identity Section

The screenshot shows the 'Identity' section of the FT Edge Manager interface. The form is titled 'Identity' and contains the following fields:

- Name***: Text input field with placeholder 'Name'.
- Title***: Text input field with placeholder 'Title'.
- Project***: Dropdown menu with placeholder 'Select/Search Project'.
- Description**: Text area with placeholder 'Description'.
- Tags**: Two buttons labeled 'Enter Key' and 'Enter Val.' with a plus sign icon.
- Local Operator Console**: A checkbox.

Below the Identity section is the 'Details' section, which includes the following fields:

- Asset ID**: Text input field with placeholder 'Asset ID'.
- Asset Location**: Text input field with placeholder 'Asset Location'.
- Identity Type***: Dropdown menu with placeholder 'Onboarding Key' and a close button 'x'.
- Onboarding Key***: Text input field with placeholder 'XXXXXXXX-XXXX-MXXX-NXXX-XXXXXXXXXXXX I'.
- Serial Number***: Text input field with placeholder 'Serial Number'.
- Brand***: Dropdown menu with placeholder 'Allen-Bradley' and a close button 'x'.
- Model***: Text input field with placeholder 'ASEM-6300B-13-EaaS-BoxPC-TPM' and a close button 'x'.

5. Provide the following details in the Details section:

- **Identity Type:** Select [Onboarding Key] from the drop-down list.
- **Onboarding Key:** Provide the Onboarding Key printed on the box and on the device label as "ONBOARDING KEY".
- **Serial Number:** Provide the Onboarding Serial Number printed on the box and on the device label as "ONBOARDING SN".
- **Brand:** Select [Allen-Bradley] from the drop-down list.
- **Model:** Select ASEM Model that you have purchased.

Figure 1-5: Details Section

The screenshot shows the 'Details' section of the FT Edge Manager interface. The form is titled 'Details' and contains the following fields:

- Asset ID**: Text input field with placeholder 'Asset ID'.
- Asset Location**: Text input field with placeholder 'Asset Location'.
- Identity Type***: Dropdown menu with placeholder 'Onboarding Key' and a close button 'x'.
- Onboarding Key***: Text input field with placeholder 'XXXXXXXX-XXXX-MXXX-NXXX-XXXXXXXXXXXX I'.
- Serial Number***: Text input field with placeholder 'Serial Number'.
- Brand***: Dropdown menu with placeholder 'Select/Search Brand'.
- Model***: Text input field with placeholder 'ASEM-6300B-13-EaaS-BoxPC-TPM' and a close button 'x'.

Below the Details section is the 'Additional Configurations' section, which includes the following checkboxes:

- Activate Edge Node
- Activate Default App Network

At the bottom right of the form, there are 'Cancel' and 'Add' buttons.

6. Ensure that the port that was plugged into the managed switch is configured as follows:

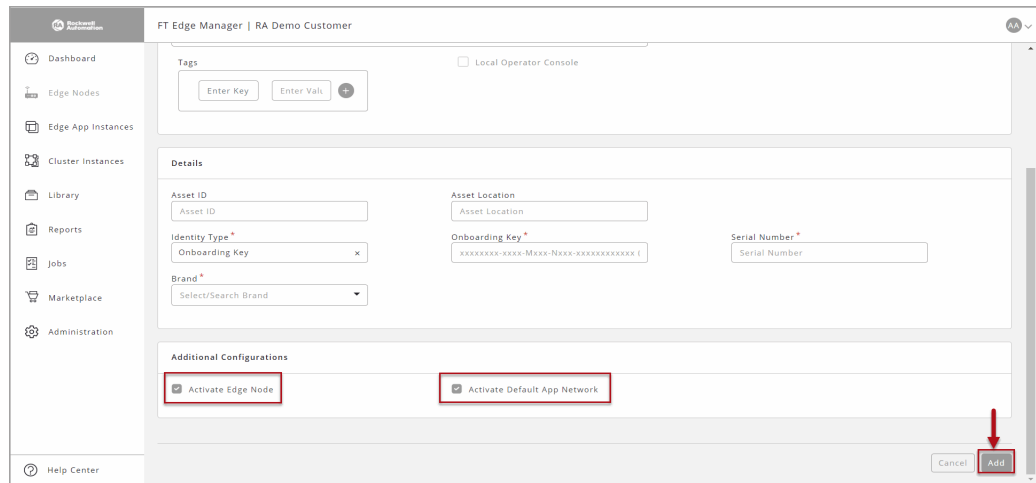
- **Interface Usage:** Management
- **Network:** Default-ipv4-dhcp

7. Ensure that the 'Activate Edge Node' and the 'Activate Default App Network' checkboxes are selected.

IMPORTANT: If the 'Activate Edge Node' checkbox is not selected and you click [Add], the admin state of the onboarded Edge Node will be unregistered until you activate the Edge Node from the Edge Node detailed view screen.

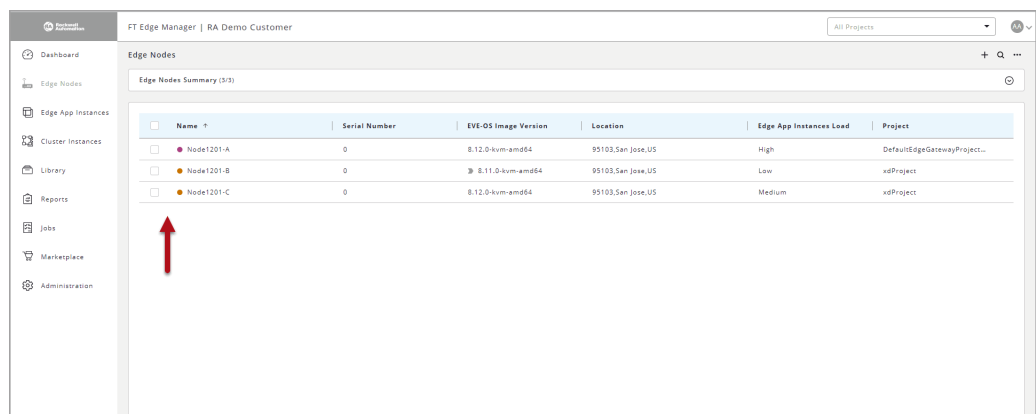
8. Click [Add] to add the Edge Node.

Figure 1-6: Add Edge Node



The newly added Edge Node appears in the list view.

Figure 1-7: Added Edge Node



The colored dot indicates the Run State to the left of the Edge Node name. The colored dots with the state is as represented in the table:

Legends	Description
● Online	The Edge Application Instance is working fine.
● Error	The Edge Application Instance is stopped.
● Initialized	EVE has received the configuration details of the Edge Application Instance and the process is in progress.
● Suspect	If the FT Edge does not hear from the Edge Application Instance or EVE for 3 minutes, it puts the instance in this state.
● Unknown	When FT Edge creates metadata of the instance or when EVE reports an invalid state.
● Other	Could be any reason other than the ones described in this table.

Additional Resources

These documents contain additional information related Rockwell Automation products.

Resource	Description
ASEM 6300B Box PCs and 6300T Box Thin Clients – Installation Instructions, Publication 6300B-in001	Provide details on how to install ASEM 6300B Box PC or 6300T Box Thin Client.
FactoryTalk Hub User Guide	Provide guidelines for using FT Hub Application.
FactoryTalk Edge Manager User Manual	Provide guidelines for using FactoryTalk Edge Manager Application.
FactoryTalk Edge Gateway User Manual	Provide guidelines for using FactoryTalk Edge Gateway Application.
FactoryTalk Edge Manager Edge Operating System (Edge OS) Installation Guide	Provides guidelines to install an Edge Operating System (Edge OS) image into hardware device or Edge Node.

View or download publications at <http://www.rockwellautomation.com/literature>. To order paper copies of technical documentation, contact the local Rockwell Automation distributor or sales representative.

This page has been intentionally left blank

Rockwell Automation Support

Rockwell Automation provides technical information on the Web to assist you in using its products. At <https://rockwellautomation.custhelp.com/app/phone> you can find technical and application notes, sample code, and links to software service packs. You can also visit our Support Center at <https://rockwellautomation.custhelp.com/> for software updates, support chats and forums, technical information, FAQs, and to sign up for product notification updates.

Documentation Feedback

Your comments will help us serve your documentation needs better. If you have any suggestions on how to improve this document, complete this form, publication [RA-DU002](#), available at <http://www.rockwellautomation.com/literature/>.

Rockwell Automation maintains current product environmental information on its website at <http://www.rockwellautomation.com/rockwellautomation/about-us/sustainability-ethics/product-environmentalcompliance.page>

Connect with us.    

rockwellautomation.com ————— **expanding human possibility™**

AMERICAS: Rockwell Automation, 1201 South Second Street, Milwaukee, WI 53204-2496 USA, Tel: (1) 414.382.2000, Fax: (1) 414.382.4444
EUROPE/MIDDLE EAST/AFRICA: Rockwell Automation NV, Pegasus Park, De Kleetlaan 12a, 1831 Diegem, Belgium, Tel: (32) 2 663 0600, Fax: (32) 2 663 0640
ASIA PACIFIC: Rockwell Automation, Level 14, Core F, Cyberport 3, 100 Cyberport Road, Hong Kong, Tel: (852) 2887 4788, Fax: (852) 2508 1846

Allen-Bradley, Expanding human possibility, FactoryTalk Edge Manager and Rockwell Software logos are registered trademarks of Rockwell Automation, Inc. Trademarks not belonging to Rockwell Automation are the property of their respective companies.