



**Rockwell  
Automation**

# Encompass product reference guide

2020 EDITION



**Encompass™  
Product Partner**

A ROCKWELL AUTOMATION PARTNER



# Encompass product partners

Our Encompass™ program creates a path for critical information exchange and improved product solutions by linking the technical and commercial resources of Rockwell Automation® and the best suited Encompass partner. Encompass partner companies deliver key capabilities that help to complement the Rockwell Automation portfolio and vision of The Connected Enterprise. These partners have completed a rigorous membership process and are committed to the success of our mutual customers.

## Delivering a world of expertise

The power  
of collaboration

When you choose Rockwell Automation, you also tap into the power of our PartnerNetwork™ program, our framework of suppliers of complementary products and services. The program provides you with access to a local, regional and global network of best-in-class companies including strategic alliances's, system integrators, machine/equipment builders, product reference partners (Encompass) and technology licensing partners.

By working with members of the PartnerNetwork program, you can benefit from:

- More effective products and solutions through skilled qualified suppliers
- Resources that are closely matched to your industry or application need
- More efficient implementation leading to a quicker return on your investment
- Consistency and coordination that can reduce 'surprises'
- Improved flexibility and responsiveness to help drive business results

## Global reach, local compatibility

Encompass is divided into three global regions – the Americas, Europe, Middle East and Africa (EMEA) and Asia Pacific. Encompass products are referenced in one, two or all three regions depending on a partner's ability to provide sales and support in that region. This resource-rich combination of Rockwell Automation and product partners helps you to have greater flexibility, productivity and lower total cost of ownership – and the confidence that comes from knowing you are working with premier suppliers.

## Meet key partners

Join us to find out how you can benefit from the products and solutions of our participating partners. Encompass partners participate at our events either through presentations or via displays on the exhibition floor. You have opportunities to meet our partners through local, regional and global exhibits such as Rockwell Automation On The Move™ (RAOTM), ROKLive, and through our annual Automation Fair® event.

### INFORMATION YOU CAN USE

## Discover partners that complement your Rockwell Automation installation

With this reference guide, you can quickly and easily locate products that best solve your application needs. Products are organized by product category.

### PRODUCT CATEGORY INDEX

- Bar Code Scanners/Decoders
- Cables
- Cellular Modems/Routers
- Circuit Protection
- CNC Control
- Computer/Servers and Fault Tolerant Solutions
- Displays
- Drives
- Electric Motors
- Electrical Installation
- Electronic Operator Interface
- Enclosures
- Ethernet Remote Access
- Explosion Proof Electrical
- Fiber Optic Interfaces
- Fire Protection Systems
- Foundation Fieldbus
- I/O Modules
- Information Processing
- Infrared Thermography/ Preventive Maintenance Tools
- Laser Engraving System/Dot Peen Marking System
- Lighting
- Mobile Computing
- Modems
- Motion
- Motor Driven Roller
- Network
- Power/Power Management
- Printers
- Process
- Process Instruments
- Programmable Limit Switches
- Programming Ports
- Protection Relays and Controls
- Purge/Pressurization - Hazardous Areas
- Radio Frequency Identification
- Remote Alarm Notification
- Robotics
- Safety
- Sensor Interfaces
- Sensors
- Signature Analysis
- Software
- Surge Suppression
- Telecommand
- Test Tools
- Time Stamp/Time Source
- Transformers
- Two-way Radios
- Valve Controllers
- Valve Interfaces
- Vision
- Weighing
- Wireless
- Wiring Devices

**Find current information** about Rockwell Automation events from the following websites:

**Rockwell Automation Global Events**  
[rockwellautomation.com/global/events](http://rockwellautomation.com/global/events)

**Automation Fair**  
[automationfair.com](http://automationfair.com)

**PartnerNetwork Website**  
[rockwellautomation.com/global/sales-partners](http://rockwellautomation.com/global/sales-partners)

# Discover partners that complement your **Rockwell Automation** installation

You can find more details about the Encompass referenced products through our new Encompass Program website and locator at **[locator.rockwellautomation.com/encompass](https://locator.rockwellautomation.com/encompass)**





<b>Product Category</b>	<b>Company Name</b>	<b>Region</b>
Bar Code Scanners/Decoders	Pepperl+Fuchs, Inc.	GLOBAL
Bar Code Scanners/Decoders	Zebra Technologies	GLOBAL
Cables - Communication	Belden	GLOBAL
Cables - Communication	Southwire Company	AMERICAS
Cables - Power Specialty	Service Wire	AMERICAS
Cables - Power Specialty	Southwire Company	AMERICAS
Cellular Modems/Routers	InHand Networks	ASIA PACIFIC
Circuit Protection	Bussmann by Eaton	AMERICAS
Circuit Protection	Hubbell	AMERICAS
Circuit Protection	Littelfuse Inc.	AMERICAS
Circuit Protection	Mersen	AMERICAS
Circuit Protection	NK Technologies	AMERICAS
Circuit Protection	Post Glover Resistors	AMERICAS   ASIA PACIFIC
Circuit Protection	Powerohm Resistors - A Hubbell Company	GLOBAL
CNC Control	FANUC	AMERICAS   EUROPE, MIDDLE EAST, AFRICA
Computer/Servers and Fault Tolerant Solutions	Stratus Technologies	GLOBAL
Displays	Spectrum Controls Inc.	GLOBAL
Drive - Braking	Bonitron	AMERICAS
Drive - Braking	Post Glover Resistors	AMERICAS   ASIA PACIFIC
Drive - Braking	Powerohm Resistors -A Hubbell Company	GLOBAL
Drive - Braking	STOBER Drives, Inc.	GLOBAL
Drive - Cables	Belden	GLOBAL
Drive - Cables	Hubbell	AMERICAS
Drive - Cables	Service Wire	AMERICAS
Drive - Cables	Southwire Company	AMERICAS
Drive - Filters	Block USA, Inc.	AMERICAS
Drive - Filters	Hammond Power Solutions	AMERICAS   EUROPE, MIDDLE EAST, AFRICA

<b>Product Category</b>	<b>Company Name</b>	<b>Region</b>
Drive - Filters	Mesta Electronics Inc.	AMERICAS
Drive - Filters	MTE Corporation	AMERICAS   ASIA PACIFIC
Drive - Filters	Powerohm Resistors -A Hubbell Company	GLOBAL
Drive - Filters	TCI, LLC	AMERICAS
Drive - Modules	Advanced Micro Controls Inc. (AMCI)	GLOBAL
Drive - Modules	Bonitron	AMERICAS
Drive - Modules	Spectrum Controls Inc.	GLOBAL
Drive - Modules	Tolomatic, Inc.	AMERICAS
Electric Motors	Marathon Motors	AMERICAS
Electrical Installation	Hubbell	AMERICAS
Electronic Operator Interface	SeQent	AMERICAS
Electronic Operator Interface	Spectrum Controls Inc.	GLOBAL
Enclosures - Accessories	Rittal GmbH & Co. KG	ASIA PACIFIC   EUROPE, MIDDLE EAST, AFRICA
Enclosures - Accessories	ROBROY Enclosures	AMERICAS
Enclosures - Accessories	Roxtec Inc.	AMERICAS
Enclosures - Computer and Data Center	Rittal GmbH & Co. KG	ASIA PACIFIC   EUROPE, MIDDLE EAST, AFRICA
Enclosures - General Purpose	nVent Hoffman	GLOBAL
Enclosures - General Purpose	Rittal GmbH & Co. KG	ASIA PACIFIC   EUROPE, MIDDLE EAST, AFRICA
Enclosures - General Purpose	ROBROY Enclosures	AMERICAS
Enclosures - Hazardous Location	Hubbell	AMERICAS
Enclosures - Hazardous Location	nVent Hoffman	GLOBAL
Enclosures - Hazardous Location	Pepperl + Fuchs, Inc	GLOBAL
Ethernet Remote Access	HMS Networks	GLOBAL
Ethernet Remote Access	InHand Networks	ASIA PACIFIC
Ethernet Remote Access	ProSoft Technology	GLOBAL
Ethernet Remote Access	Spectrum Controls Inc.	GLOBAL
Explosion Proof Electrical	Hubbell	AMERICAS
Fiber Optic Interfaces	Softing Inc.	GLOBAL

<b>Product Category</b>	<b>Company Name</b>	<b>Region</b>
Fire Protection Systems	Det-Tronics	<b>AMERICAS</b>
Fire Protection Systems	FireBus LLC	<b>AMERICAS</b>
Foundation Fieldbus - Infrastructure	Pepperl+Fuchs, Inc.	<b>GLOBAL</b>
I/O Modules - Analog/Discrete	Advanced Micro Controls Inc. (AMCI)	<b>GLOBAL</b>
I/O Modules - Analog/Discrete	Softing Inc.	<b>GLOBAL</b>
I/O Modules - Analog/Discrete	Spectrum Controls Inc.	<b>GLOBAL</b>
Information Processing	Softing Inc.	<b>GLOBAL</b>
Infrared Thermography/Preventive Maintenance Tools	Advanced Energy Industries, Inc.	<b>AMERICAS</b>
Infrared Thermography/Preventive Maintenance Tools	FLIR Systems	<b>AMERICAS</b>
Infrared Thermography/Preventive Maintenance Tools	Grace Engineered Products, Inc.	<b>GLOBAL</b>
Laser Engraving System / Dot Peen Marking System	MECCO	<b>AMERICAS</b>
Lighting - Facility	Dialight	<b>AMERICAS</b>
Mobile Computing Applications	Pepperl + Fuchs, Inc.	<b>GLOBAL</b>
Mobile Computing Applications	Zebra Technologies	<b>GLOBAL</b>
Mobile Computing Platforms	Pepperl+Fuchs, Inc.	<b>GLOBAL</b>
Mobile Computing Platforms	Zebra Technologies	<b>GLOBAL</b>
Modems - Line	Data-Linc Group	<b>GLOBAL</b>
Motion - Ex-Proof Servo Motors	Elwood Corporation - High Performance Motors Group	<b>AMERICAS</b>
Motion - Gear Boxes, NEMA Input	STOBER Drives, Inc.	<b>GLOBAL</b>
Motion - Gear Boxes, Precision	Apex Dynamics Inc.	<b>GLOBAL</b>
Motion - Gear Boxes, Precision	Harmonic Drive, LLC	<b>AMERICAS</b>
Motion - Gear Boxes, Precision	Nidec-Shimpo Corporation	<b>AMERICAS   ASIA PACIFIC</b>
Motion - Gear Boxes, Precision	STOBER Drives, Inc.	<b>GLOBAL</b>
Motion - Gear Boxes, Precision	WITTENSTEIN, Inc.	<b>GLOBAL</b>
Motion - Intelligent Multi-Carrier Positioning Sys	Destaco	<b>AMERICAS</b>



<b>Product Category</b>	<b>Company Name</b>	<b>Region</b>
Motion - Linear Motion, Ball Screw Stages	LinTech	<b>AMERICAS</b>
Motion - Linear Motion, Ball Screw Stages	Nook Industries, Inc	<b>AMERICAS</b>
Motion - Linear Motion, Ball Screw Stages	SMC Corporation	<b>GLOBAL</b>
Motion - Linear Motion, Ball Screw Stages	Tolomatic, Inc	<b>AMERICAS</b>
Motion - Linear Motion, Belt Driven Stage	LinTech	<b>AMERICAS</b>
Motion - Linear Motion, Belt Driven Stage	Nook Industries, Inc	<b>AMERICAS</b>
Motion - Linear Motion, Belt Driven Stage	SMC Corporation	<b>GLOBAL</b>
Motion - Linear Motion, Belt Driven Stage	Tolomatic, Inc	<b>AMERICAS</b>
Motion - Linear Motion, Rod Style Actuator	Curtiss-Wright/Exlar® Automation	<b>AMERICAS</b>
Motion - Linear Motion, Rod Style Actuator	LinMot USA, Inc	<b>AMERICAS   EUROPE, MIDDLE EAST, AFRICA</b>
Motion - Linear Motion, Rod Style Actuator	Nook Industries, Inc	<b>AMERICAS</b>
Motion - Linear Motion, Rod Style Actuator	Tolomatic, Inc	<b>AMERICAS</b>
Motion - Linear Motion, Rod Style Actuator	WITTENSTEIN, Inc.	<b>GLOBAL</b>
Motion - Linear, Ball and Roller Screws	LinTech	<b>AMERICAS</b>
Motion - Linear, Ball and Roller Screws	Nook Industries, Inc	<b>AMERICAS</b>
Motion - Mechanical Accessories	Apex Dynamics Inc.	<b>GLOBAL</b>
Motion - Mechanical Accessories	LinMot USA, Inc	<b>AMERICAS   EUROPE, MIDDLE EAST, AFRICA</b>
Motion - Mechanical Accessories	LinTech	<b>AMERICAS</b>
Motion - Mechanical Accessories	POSITAL FRABA Inc	<b>GLOBAL</b>
Motion - Mechanical Accessories	STOBER Drives, Inc.	<b>GLOBAL</b>
Motion - Mechanical Accessories	WITTENSTEIN, Inc.	<b>GLOBAL</b>
Motion - Multi-Axis Linear Solutions (x/y/z)	LinTech	<b>AMERICAS</b>
Motion - Multi-Axis Linear Solutions (x/y/z)	Nook Industries, Inc	<b>AMERICAS</b>
Motion - Rotary Indexing Tables	Destaco	<b>AMERICAS</b>
Motion - Rotary Indexing Tables	LinTech	<b>AMERICAS</b>
Motion - Rotary Indexing Tables	Weiss North America Inc.	<b>AMERICAS</b>
Motion - Servo Motor Cables	Elwood Corporation - High Performance Motors Group	<b>AMERICAS</b>

<b>Product Category</b>	<b>Company Name</b>	<b>Region</b>
Motion - Servo Motors	Advanced Micro Controls Inc. (AMCI)	GLOBAL
Motion - Servo Motors	Elwood Corporation - High Performance Motors Group	AMERICAS
Motion - Servo Motors	LinMot USA, Inc	AMERICAS   EUROPE, MIDDLE EAST, AFRICA
Motion - Servo Motors	SICME MOTORI S.R.L.	EUROPE, MIDDLE EAST, AFRICA
Motion - Servo Motors	STOBER Drives, Inc.	GLOBAL
Motion - Servo Motors	WITTENSTEIN, Inc.	GLOBAL
Motion - Servo with Integrated Gear Box	WITTENSTEIN, Inc.	GLOBAL
Motion - Stepper	Advanced Micro Controls Inc. (AMCI)	GLOBAL
Motion - Stepper	JVL Industri Elektronik A/S	EUROPE, MIDDLE EAST, AFRICA
Motion - Stepper	SMC Corporation	GLOBAL
Motor Driven Roller	Itoh Denki USA, Inc.	AMERICAS
Network - Computer Bus Interface	HMS Networks	GLOBAL
Network - Computer Bus Interface	Softing Inc.	GLOBAL
Network - Diagnostics	HMS Networks	GLOBAL
Network - Diagnostics	Softing Inc.	GLOBAL
Network - Diagnostics	Teledyne LeCroy	AMERICAS
Network - Gateway Bridge	Aparian Inc.	AMERICAS   EUROPE, MIDDLE EAST, AFRICA
Network - Gateway Bridge	HMS Networks	GLOBAL
Network - Gateway Bridge	ProSoft Technology	GLOBAL
Network - Gateway Bridge	Pyramid Solutions, Inc.	AMERICAS
Network - Gateway Bridge	Spectrum Controls Inc.	GLOBAL
Network - Gateway Serial	HMS Networks	GLOBAL
Network - Infrastructure	Motorola Solutions	AMERICAS
Network - Infrastructure	Panduit	GLOBAL
Network - Protocol Solutions	Aparian Inc.	AMERICAS   EUROPE, MIDDLE EAST, AFRICA
Network - Protocol Solutions	Bihl+Wiedemann GmbH	GLOBAL

<b>Product Category</b>	<b>Company Name</b>	<b>Region</b>
Network - Protocol Solutions	HMS Networks	GLOBAL
Network - Protocol Solutions	InHand Networks	ASIA PACIFIC
Network - Protocol Solutions	ProSoft Technology	GLOBAL
Network - Protocol Solutions	Softing Inc.	GLOBAL
Network - Protocol Solutions	Spectrum Controls Inc.	GLOBAL
Network - Protocol Solutions	Zebra Technologies	GLOBAL
Network - Security	Clarity	AMERICAS
Network - Security	Owl Cyber Defense	AMERICAS   EUROPE, MIDDLE EAST, AFRICA
Network - Security	Panduit	GLOBAL
Power - Protection and Distribution	Littelfuse Inc.	AMERICAS
Power - Protection and Distribution	Mersen	AMERICAS
Power - Protection and Distribution	Point Eight Power	AMERICAS
Power - Protection and Distribution	Powerohm Resistors -A Hubbell Company	GLOBAL
Power - Protection and Distribution	Rittal GmbH & Co. KG	ASIA PACIFIC   EUROPE, MIDDLE EAST, AFRICA
Power - Protection and Distribution	Schweitzer Engineering Laboratories Inc.	AMERICAS
Power Factor Correction	TCI, LLC	AMERICAS
Power Management - Protection and Monitoring Systems	Schweitzer Engineering Laboratories Inc.	AMERICAS
Power Management - Protection and Monitoring Systems	Spectrum Controls Inc.	GLOBAL
Printers - Labeling Products	Brady Corporation	AMERICAS
Printers - Labeling Products	Domino Amjet, Ltd.	AMERICAS
Printers - Labeling Products	Panduit	GLOBAL
Printers - Labeling Products	Zebra Technologies	GLOBAL
Process - Alarm Management Software	exida Consulting, LLC	AMERICAS
Process - Control Valves	Burkert Fluid Control Systems	AMERICAS
Process - Control Valves	Metso	AMERICAS   EUROPE, MIDDLE EAST, AFRICA

<b>Product Category</b>	<b>Company Name</b>	<b>Region</b>
Process - Control Valves	Parker Pneumatic Division	<b>AMERICAS</b>
Process - Control Valves	SAMSON Controls	<b>AMERICAS</b>
Process - HART Interface Devices	Aparian Inc.	<b>AMERICAS   EUROPE, MIDDLE EAST, AFRICA</b>
Process - HART Interface Devices	Endress+Hauser	<b>GLOBAL</b>
Process - HART Interface Devices	Pepperl+Fuchs, Inc.	<b>GLOBAL</b>
Process - HART Interface Devices	Spectrum Controls Inc.	<b>GLOBAL</b>
Process - Intelligent Valve Controllers	Burkert Fluid Control Systems	<b>AMERICAS</b>
Process - Intelligent Valve Controllers	Metso	<b>AMERICAS   EUROPE, MIDDLE EAST, AFRICA</b>
Process - Intelligent Valve Controllers	SAMSON Controls	<b>AMERICAS</b>
Process - Loop Tuning Software	Control Station, Inc.	<b>GLOBAL</b>
Process - Power Supplies	Advanced Energy Industries, Inc.	<b>AMERICAS</b>
Process - Power Supplies	Endress+Hauser	<b>GLOBAL</b>
Process - Power Supplies	Pepperl+Fuchs, Inc.	<b>GLOBAL</b>
Process - Test Tools	Endress+Hauser	<b>GLOBAL</b>
Process - Test Tools	Fluke Corp.	<b>GLOBAL</b>
Process - Test Tools	Softing Inc.	<b>GLOBAL</b>
Process Instruments - Analytical	Ametek	<b>AMERICAS   ASIA PACIFIC</b>
Process Instruments - Analytical	Burkert Fluid Control Systems	<b>AMERICAS</b>
Process Instruments - Analytical	Endress+Hauser	<b>GLOBAL</b>
Process Instruments - Flow Meter	Burkert Fluid Control Systems	<b>AMERICAS</b>
Process Instruments - Flow Meter	Endress+Hauser	<b>GLOBAL</b>
Process Instruments - Flow Meter	Festo	<b>AMERICAS</b>
Process Instruments - Gas and Oil Measurement	ProSoft Technology	<b>GLOBAL</b>
Process Instruments - Level	Ametek	<b>AMERICAS   ASIA PACIFIC</b>
Process Instruments - Level	Endress+Hauser	<b>GLOBAL</b>
Process Instruments - Level	MTS Systems Corp., Sensors Division	<b>AMERICAS</b>

<b>Product Category</b>	<b>Company Name</b>	<b>Region</b>
Process Instruments - Load	Helm Instrument Co. Inc.	GLOBAL
Process Instruments - Pressure	Endress+Hauser	GLOBAL
Process Instruments - Recorder	Endress+Hauser	GLOBAL
Process Instruments - Temperature	Advanced Energy Industries, Inc.	AMERICAS
Process Instruments - Temperature	Endress+Hauser	GLOBAL
Process Instruments - Temperature	Fluke Corp.	GLOBAL
Process Instruments - Tension Measurement	VPG - BLH Nobe	AMERICAS
Process Instruments - Transmitter	Armstrong International	AMERICAS
Process Instruments - Transmitter	Burkert Fluid Control Systems	AMERICAS
Process Instruments - Transmitter	Endress+Hauser	GLOBAL
Process Instruments - Transmitter	Mettler-Toledo, LLC.	GLOBAL
Programmable Limit Switches	Advanced Micro Controls Inc. (AMCI)	GLOBAL
Programmable Limit Switches	Ametek	AMERICAS   ASIA PACIFIC
Programming Ports	Grace Engineered Products, Inc.	GLOBAL
Protection Relays and Controls	Littelfuse Inc.	AMERICAS
Purge/Pressurization - Hazardous Areas	Pepperl+Fuchs, Inc.	GLOBAL
Radio Frequency Identification	Zebra Technologies	GLOBAL
Remote Alarm Notification	RACO Manufacturing & Engineering Co.	AMERICAS
Robotics - Logix Integrated	Codian Robotics	AMERICAS   EUROPE, MIDDLE EAST, AFRICA
Robotics - Logix Integrated	Weiss North America Inc.	AMERICAS
Robotics - Networked	DENSO Robotics	AMERICAS
Robotics - Networked	FANUC	AMERICAS   EUROPE, MIDDLE EAST, AFRICA
Safety - Arc Flash Protection	CBS ArcSafe, Inc.	AMERICAS
Safety - Arc Flash Protection	Littelfuse Inc.	AMERICAS
Safety - Machine	Festo	AMERICAS

<b>Product Category</b>	<b>Company Name</b>	<b>Region</b>
Safety - Machine	ROSS Controls	GLOBAL
Safety - Machine	SMC Corporation	GLOBAL
Safety - Permanent Electrical Safety Devices	Grace Engineered Products, Inc.	GLOBAL
Safety - Permanent Electrical Safety Devices	Panduit	GLOBAL
Safety - Process	exida Consulting, LLC	AMERICAS
Safety - Process	Metso	AMERICAS   EUROPE, MIDDLE EAST, AFRICA
Safety - Process	ROSS Controls	GLOBAL
Safety - Tools & Awareness	Brady Corporation	AMERICAS
Safety - Tools & Awareness	Fluke Corp.	GLOBAL
Safety - Tools & Awareness	Littelfuse Inc.	AMERICAS
Safety - Tools & Awareness	Panduit	GLOBAL
Sensor Interfaces - Resolver	Advanced Micro Controls Inc. (AMCI)	GLOBAL
Sensor Interfaces - Resolver	Ametek	AMERICAS   ASIA PACIFIC
Sensor Interfaces - Rotary / LDT	Advanced Micro Controls Inc. (AMCI)	GLOBAL
Sensors - Current Sensing Devices	NK Technologies	AMERICAS
Sensors - Linear Displacement Transducers	Ametek	AMERICAS   ASIA PACIFIC
Sensors - Linear Displacement Transducers	Festo	AMERICAS
Sensors - Linear Displacement Transducers	MTS Systems Corp., Sensors Division	AMERICAS
Sensors - Linear Displacement Transducers	POSITAL FRABA Inc	GLOBAL
Sensors - Linear Displacement Transducers	SMC Corporation	GLOBAL
Sensors - Occupancy	Dialight	AMERICAS
Sensors - Occupancy	SMC Corporation	GLOBAL
Sensors - Position Inclinometers	POSITAL FRABA Inc	GLOBAL
Sensors - Resolvers	Advanced Micro Controls Inc. (AMCI)	GLOBAL
Sensors - Resolvers	POSITAL FRABA Inc	GLOBAL
Sensors - Resolvers	VEGA - Innovative Support Services, Inc.	AMERICAS

<b>Product Category</b>	<b>Company Name</b>	<b>Region</b>
Sensors - Strain Gage	Hardy Process Solutions	GLOBAL
Sensors - Strain Gage	Helm Instrument Co. Inc.	GLOBAL
Sensors - Strain Gage	Mettler-Toledo, LLC.	GLOBAL
Sensors - Voltage Sensing Devices	NK Technologies	AMERICAS
Signature Analysis	Helm Instrument Co. Inc.	GLOBAL
Software - Analytical	Control Station, Inc.	GLOBAL
Software - Asset Management	Eagle Technology, Inc.	AMERICAS
Software - Asset Management	Endress+Hauser	GLOBAL
Software - Asset Management	Fluke Corp.	GLOBAL
Software - Asset Management	LLumin, Inc.	AMERICAS
Software - Asset Management	Prime Technologies, Inc.	AMERICAS
Software - Data Management	Domino Amjet, Ltd.	AMERICAS
Software - Data Management	EPLAN Software & Service	GLOBAL
Software - Drivers & Communication SDKs	Case Software Inc.	GLOBAL
Software - Drivers & Communication SDKs	Kepware	GLOBAL
Software - Drivers & Communication SDKs	Softing Inc.	GLOBAL
Software - Electrical CAD Software	Autodesk	AMERICAS
Software - Electrical CAD Software	EPLAN Software & Service	GLOBAL
Software - Operations Intelligence	Endress + Hauser	GLOBAL
Software - Operations Intelligence	Prime Technologies, Inc.	AMERICAS
Software - Plant-to-Enterprise Integration	5G Automatika, Ltd.	AMERICAS
Software - Plant-to-Enterprise Integration	OSIsoft, LLC	GLOBAL
Software - Remote Alarm Notification	SeQent	AMERICAS
Software - Remote Alarm Notification	WIN-911 Software	GLOBAL
Software - Report Generator	Ocean Data Systems	AMERICAS   EUROPE, MIDDLE EAST, AFRICA
Software - Report Generator	SyTech Inc.	AMERICAS

<b>Product Category</b>	<b>Company Name</b>	<b>Region</b>
Software - Simulation	Cape Software Inc.	<b>GLOBAL</b>
Software - Simulation	machineering GmbH & Co. KG	<b>EUROPE, MIDDLE EAST, AFRICA</b>
Software - Virtual Commissioning	Maplesoft	<b>AMERICAS   EUROPE, MIDDLE EAST, AFRICA</b>
Software - Virtual Commissioning	Prime Technologies, Inc.	<b>AMERICAS</b>
Surge Suppression - Power Line	Leviton Mfg. Co.	<b>AMERICAS</b>
Surge Suppression - Power Line	Littelfuse Inc.	<b>AMERICAS</b>
Surge Suppression - Power Line	Mersen	<b>AMERICAS</b>
Telecommand	Cattron	<b>AMERICAS</b>
Test Tools	Ametek	<b>AMERICAS   ASIA PACIFIC</b>
Test Tools	Bonitron	<b>AMERICAS</b>
Test Tools	ESTeem Wireless Modems	<b>AMERICAS</b>
Test Tools	FLIR Systems	<b>AMERICAS</b>
Test Tools	Fluke Corp.	<b>GLOBAL</b>
Time Stamp / Time Source Module	Aparian Inc.	<b>AMERICAS   EUROPE, MIDDLE EAST, AFRICA</b>
Time Stamp / Time Source Module	Spectron Controls Inc.	<b>GLOBAL</b>
Transformers - General	Hammond Power Solutions	<b>AMERICAS   EUROPE, MIDDLE EAST, AFRICA</b>
Transformers - General	Hubbell	<b>AMERICAS</b>
Transformers - General	Powerohm Resistors -A Hubbell Company	<b>GLOBAL</b>
Two-way Radios - Private	Motorola Solutions	<b>AMERICAS</b>
Valve Controllers - Discrete	Westlock Controls	<b>AMERICAS</b>
Valve Controllers - Pneumatic	Burkert Fluid Control Systems	<b>AMERICAS</b>
Valve Controllers - Pneumatic	Festo	<b>AMERICAS</b>
Valve Controllers - Pneumatic	SMC Corporation	<b>GLOBAL</b>
Valve Controllers - Pneumatic	Westlock Controls	<b>AMERICAS</b>
Valve Interfaces - Pneumatic	Burkert Fluid Control Systems	<b>AMERICAS</b>
Valve Interfaces - Pneumatic	Festo	<b>AMERICAS</b>

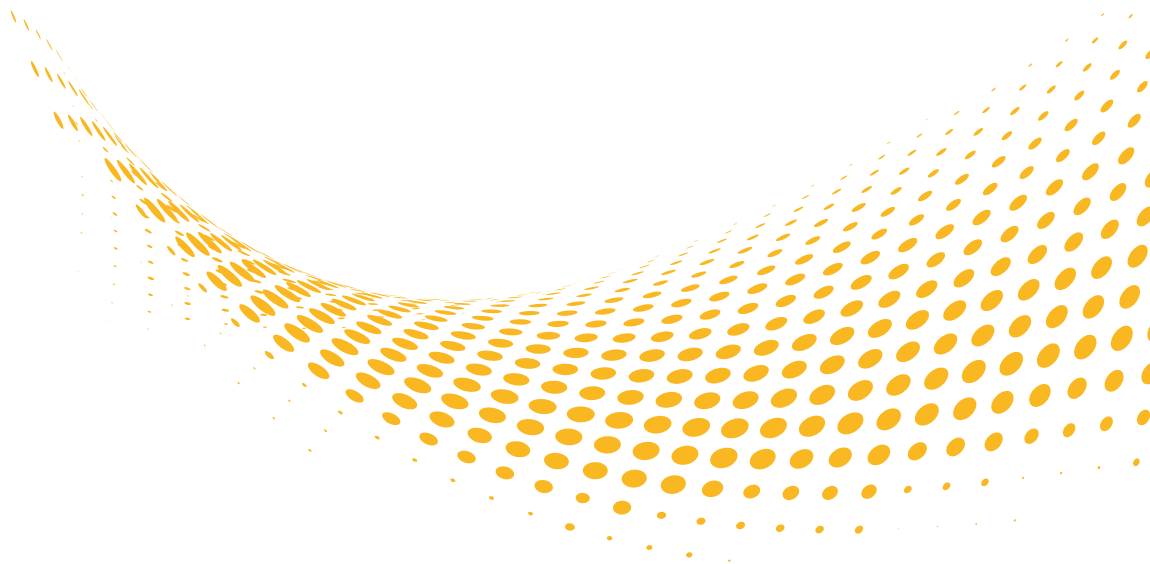


<b>Product Category</b>	<b>Company Name</b>	<b>Region</b>
Valve Interfaces - Pneumatic	Parker Pneumatic Division	<b>AMERICAS</b>
Valve Interfaces - Pneumatic	SMC Corporation	<b>GLOBAL</b>
Vision - Machine	Festo	<b>AMERICAS</b>
Vision - Machine	Hermaray	<b>AMERICAS</b>
Vision - Machine	Imperx, Inc	<b>AMERICAS</b>
Vision - Machine	Teledyne DALSA	<b>AMERICAS   ASIA PACIFIC</b>
Vision - Optical Scanner	Hermaray	<b>AMERICAS</b>
Weighing - Instruments	Hardy Process Solutions	<b>GLOBAL</b>
Weighing - Instruments	Helm Instrument Co. Inc.	<b>GLOBAL</b>
Weighing - Instruments	Mettler-Toledo, LLC	<b>GLOBAL</b>
Weighing - Instruments	Rice Lake Weighing Systems	<b>AMERICAS</b>
Weighing - Instruments	Schenck Process LLC	<b>AMERICAS</b>
Weighing - Instruments	VPG - BLH Nobel	<b>AMERICAS</b>
Wireless - I/O	Data-Linc Group	<b>GLOBAL</b>
Wireless - I/O	Hubbell	<b>AMERICAS</b>
Wireless - I/O	ProSoft Technology	<b>GLOBAL</b>
Wireless - Modems	Data-Linc Group	<b>GLOBAL</b>
Wireless - Modems	ESTeem Wireless Modems	<b>AMERICAS</b>
Wireless - Modems	Fluidmesh Networks	<b>AMERICAS</b>
Wireless - Modems	HMS Networks	<b>GLOBAL</b>
Wireless - Modems	ProSoft Technology	<b>GLOBAL</b>
Wiring Devices	Ametek	<b>AMERICAS   ASIA PACIFIC</b>
Wiring Devices	Hubbell	<b>AMERICAS</b>
Wiring Devices	icotek Corp.	<b>AMERICAS</b>
Wiring Devices	Leviton Mfg. Co.	<b>AMERICAS</b>
Wiring Devices	Panduit	<b>GLOBAL</b>

Product and system  
configuration  
tools aligned  
with **Encompass**  
**referenced products**

Rockwell Automation develops simplification tools to put valuable, time saving information in the palm of your hands.

Our tools can help you with Encompass partner product selection and configuration across product lines from project conception to final design. From push buttons to drives to motor control centers and fully networked control systems, you can find the product information and configuration assistance to help you succeed.





# ProposalWorks™

Create proposals  
and submittals

ProposalWorks software allows its users to find and configure products quickly, access technical information about those products, and estimate the total cost of automation projects. Users can:

- Select and configure products rapidly through wizards that help users specify the exact catalog numbers needed for their applications.
- Estimate and price the resulting bill of materials with current and local list pricing.
- Access a wealth of product information for Rockwell Automation and Encompass partner products including publications and drawings.
- Assemble and generate proposals, project specifications, and requests-for-quote and output them in Microsoft® Office and OpenOffice™ document and spreadsheet formats.
- Find and launch other Rockwell Automation productivity tools.
- Aggregate the results generated by other productivity tools into one spreadsheet and document output.

Full and lite versions are available to order or download here:  
[rockwellautomation.com/global/support/configuration.page](http://rockwellautomation.com/global/support/configuration.page)

## **Find products from these Encompass partners in ProposalWorks:**

Advanced Energy	nVent Hoffman
Advanced Micro Controls, Inc.	Ocean Data Systems
Block USA Inc.	Panduit Corp.
Bonitron	Pepperl+Fuchs, Inc.
Bussmann by Eaton	Post Glover Resistors
Control Station, Inc.	Powerohm Resistors - A Hubbell Company
Endress+Hauser	ProSoft Technology
Fluke Corp.	ROBROY Enclosures
Grace Engineered Products, Inc.	Ross Controls
Hammond Power Solutions, Inc.	Roxtec Inc.
Hardy Process Solutions	SeQent
Helm Instrument Co.	Service Wire
HMS Networks	Softing Inc.
Littlefuse Inc.	Southwire
Marathon Motors	Spectrum Controls, Inc.
Mersen	Stratus Technologies
Mesta Electronics, Inc.	TCI LLC
Mettler-Toledo LLC.	WIN-911 Software
MTE Corporation	
NK Technologies	

# Integrated Architecture Builder™

Automation  
system configurator

Integrated Architecture Builder (IAB) is a graphical software tool for configuring Logix-based automation systems.

Select hardware and generate bills of material for applications that include:

- PowerFlex® and Kinetix® drives
- On-machine cabling and wiring
- Motion control
- Encompass partner products
- Networks
- Controllers
- I/O
- HMI

#### Export projects to:

- ProposalWorks
- Studio 5000 Architect™
- EPLAN
- PowerPoint
- Visio®

#### Outputs include:

- Bill of materials
- Report with quality graphics

Full and lite versions are available to order or download here:

[rockwellautomation.com/global/support/configuration.page](http://rockwellautomation.com/global/support/configuration.page)

#### Find products from these Encompass partners in Integrated Architecture Builder:

Advanced Micro Controls, Inc.	Panduit Corp.
Aparian Inc.	Pepperl+Fuchs
Endress+Hauser	ProSoft Technology
EPLAN Software & Service	Pyramid Solutions, Inc.
Festo	RACO Manufacturing & Engineering Co.
Hardy Process Solutions	SMC Corporation
Helm Instrument Co., Inc.	Softing Inc.
HMS Networks	Spectrum Controls, Inc.
Itoh Denki USA, Inc.	Stratus Technologies
Mettler-Toledo, LLC	WIN-911 Software
Owl Cyber Defense	

# Motion Analyzer

Design motion  
control systems

Motion Analyzer software offers a comprehensive motion application sizing tool, where cross-functional data can be shared between the controls, electrical and the mechanical engineer. This software helps make it faster and easier to analyze, optimize, simulate and select motion control systems. Engineers are able to more effectively evaluate design alternatives and investigate machine behavior by creating digital prototypes of the machines without purchasing or installing physical equipment.

Motion Analyzer can be found here:

**[motionanalyzer.rockwellautomation.com](http://motionanalyzer.rockwellautomation.com)**

## **Find products from these**

### **Encompass partners in Motion Analyzer:**

Apex Dynamics, Inc.

Elwood Corporation -  
High Performance Motors

Nidec - Shimpo Corporation

STOBER Drives, Inc.

WITTENSTEIN, Inc.

# Studio 5000<sup>®</sup> Add-On Profile

Rockwell Automation Add-On Profiles (AOPs) are a piece of software installed on top of Studio 5000 software used to program ControlLogix<sup>®</sup> or CompactLogix<sup>™</sup> programmable controllers. AOPs are similar to wizards that let engineers easily and quickly configure third-party devices to communicate with Logix-based programmable controllers by giving the devices the same look and feel as Rockwell Automation devices. As part of the seamless integration, custom AOPs for Encompass partner devices give you the power to configure communications and see I/O data with meaningful, descriptive names. This saves you time and money during the design and commissioning phases because more guidance and online information in configuring the product is included as part the AOP, improving the out-of-box experience. After initial configuration, device configuration data is stored in the Logix controller providing Automatic Device Configuration when the device is replaced.

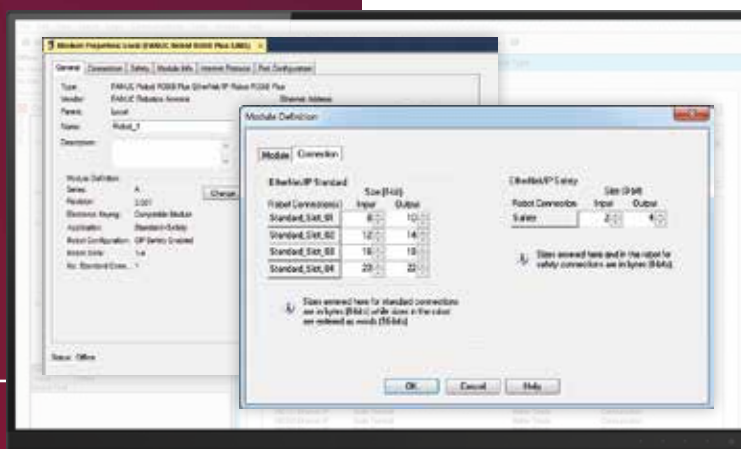
AOPs are available for devices in the following platforms and networks:

- Point I/O<sup>™</sup>
- ControlLogix
- CompactLogix
- ControlNet<sup>™</sup>
- EtherNet/IP<sup>™</sup>

## The partners offer Add-On Profiles for their referenced products:

- |                                |   |
|--------------------------------|---|
| Advanced Energy*               | FLIR Systems*                           |
| Advanced Micro Controls, Inc.* | Hardy Process Solutions*                |
| Aparian Inc.                   | Helm Instrument Co.*                    |
| Bihl+Wiedemann                 | Hermay                                  |
| Burkert Fluid Control Systems* | HMS Networks*                           |
| Cattron*                       | Itoh Denki USA, Inc.*                   |
| Dialight*                      | LinMot USA, Inc.*                       |
| Endress+Hauser*                | MECCO                                   |
| FANUC*                         | Mettler-Toledo, LLC*                    |
| Firebus LLC*                   | MTS Systems Corp.,<br>Sensors Division  |
|                                | nVent Hoffman*                          |
|                                | Panduit*                                |
|                                | Parker Pneumatic Division*              |
|                                | Pepperl+Fuchs, Inc.*                    |
|                                | ProSoft Technology*                     |
|                                | RACO Manufacturing &<br>Engineering Co. |
|                                | SMC Corporation*                        |
|                                | Softing, Inc.*                          |
|                                | Spectrum Controls, Inc.*                |
|                                | Zebra Technologies*                     |
|                                | VPG - BLH Nobel*                        |

*\*These partners offer Custom Add-On Profiles that ship with Studio 5000*







Custom Add-On Profiles improve the user experience by making it faster and easier to connect partner products with Logix controllers.



# Encompass™ Product Partner

A ROCKWELL AUTOMATION PARTNER



Connect with us.    

[rockwellautomation.com](http://rockwellautomation.com) — expanding human possibility®

AMERICAS: Rockwell Automation, 1201 South Second Street, Milwaukee, WI 53204-2496 USA, Tel: (1) 414.382.2000, Fax: (1) 414.382.4444

EUROPE/MIDDLE EAST/AFRICA: Rockwell Automation NV, Pegasus Park, De Kleetlaan 12a, 1831 Diegem, Belgium, Tel: (32) 2 663 0600, Fax: (32) 2 663 0640

ASIA PACIFIC: Rockwell Automation, Level 14, Core F, Cyberport 3, 100 Cyberport Road, Hong Kong, Tel: (852) 2887 4788, Fax: (852) 2508 1846

Allen-Bradley, Automation Fair, CompactLogix, ControlLogix, Encompass, Integrated Architecture Builder, Kinetix, PartnerNetwork, POINT I/O, PowerFlex, ProposalWorks, Rockwell Automation On The Move, Rockwell Automation TechED, Studio 5000, Studio 5000 Architect and TechConnect are trademarks of Rockwell Automation, Inc.

Trademarks not belonging to Rockwell Automation are property of their respective companies.

Publication ENCOMP-QR004K-EN-P - July 2020 | Supersedes Publication ENCOMP-QR004J-EN-P - February 2020

Copyright © 2020 Rockwell Automation, Inc. All Rights Reserved. Printed in USA.