

PlantPAx™ Logix Batch & Sequence Manager

Scalable Controller-based Batch and Sequencing Solution

Features & Benefits

PlantPAx Logix Batch & Sequence Manager significantly reduces engineering time for system integrators and process equipment builders while providing key controller-based batch management capability for end-users.

PlantPAx Logix Batch & Sequence Manager helps:

- **End Users** achieve standardization by installing a consistent modular solution throughout the plant based on a single process control strategy
- **End Users and OEMs** reduce startup and process debugging time by enabling integration into higher level batch management software systems
- **OEMs** reduce engineering costs and delivery time by providing a single process control solution independent of end user preference for stand-alone or integrated control
- **System Integrators** eliminate the need for costly, engineering-intensive custom coded sequence management solutions



Overview

Rockwell Automation recognizes that “one size does not fit all” when it comes to batch management. Because of the varying demands of the market, Rockwell Automation is delivering a scalable batch and sequence management solution for its PlantPAx Process Automation System – the PlantPAx Logix Batch & Sequence Manager. It provides a flexible, controller-based batch and sequencing solution independent of application servers and software.

Your recipes can now be configured directly in the controller through a standard user interface without requiring code changes to the system. PlantPAx Logix Batch & Sequence Manager is ideal for applications that require batch management capabilities, but are not complex enough to warrant a server-based batch software package. This solution allows you to start small but, if needed, easily scale into a comprehensive software solution without costly re-engineering and testing.

PlantPAx Logix Batch & Sequence Manager leverages the same configuration, networking and visualization environment associated with larger-scale Rockwell Automation systems. It enables local, single unit supervision and control, while supporting multiple, independent units in a single controller. This helps provide system integrators, equipment builders and end users with cost-effective options when integrating into a plant-wide control system.

LISTEN.
THINK.
SOLVE.™

Rockwell
Automation

Scalable Solution Leveraging Standard Technology



Typical Applications

PlantPAx Logix Batch & Sequence Manager is ideal for stand-alone batch units like mixers, blenders and reactors that require flexibility in both the order of the process as well as the setpoints for the recipe.

Leverages Standard Integrated Architecture Technology

Since PlantPAx Logix Batch & Sequence Manager is built using the standard control and visualization capabilities found in Rockwell Automation's Integrated Architecture, it provides a common way to configure and visualize the process across different hardware platforms. Take advantage of the wide array of Rockwell Automation control products, offering mid-range controllers and visualization solutions for small, skid-based control and high-range solutions for larger, multi-unit systems. This strategy provides you with opportunity to standardize on enterprise wide control solutions independent of the hardware and software platform.



Scalable Controller-based Solution

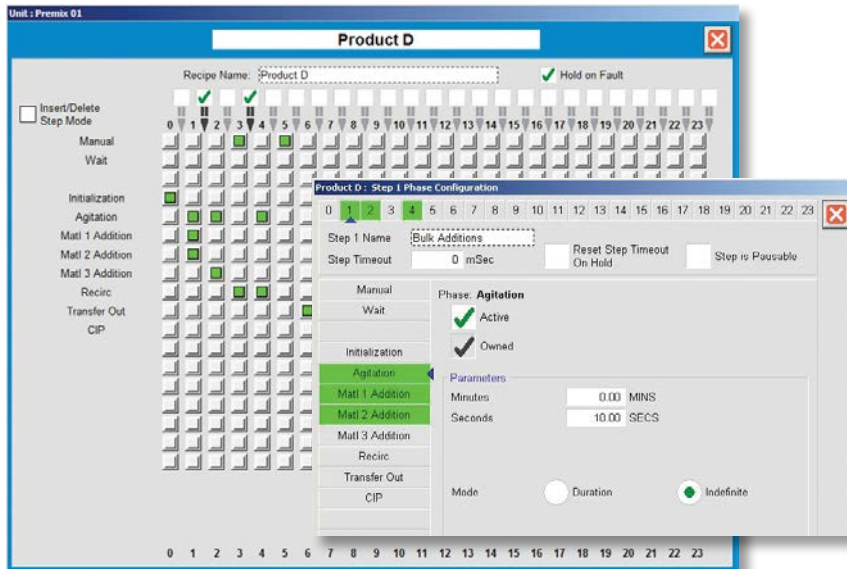
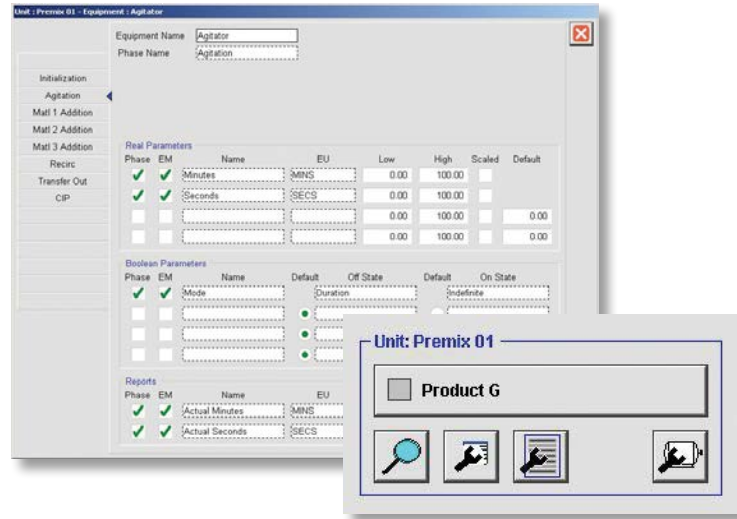
PlantPAx Logix Batch & Sequence Manager has been designed to enable skid-based equipment to be developed, tested and delivered as a fully functioning stand-alone solution but, if needed, seamlessly integrates into a larger control system. This strategy provides the end user options for integration without imposing design constraints on the OEM delivering the equipment. Additionally, PlantPAx Logix Batch & Sequence Manager gives the end-user the ability to scale operations. In the beginning, stand-alone operation may be all that is required. But over time as systems grow or requirements change, flexibility to tie these independent skids together under a single system should be an option. PlantPAx Logix Batch & Sequence Manager offers this level of scalability to prevent costly redesign and engineering.

Intuitive Development and Runtime Environment

Process Configuration

PlantPAX Logix Batch & Sequence Manager provides the ability to configure the equipment or batch phases needed to execute a process.

Within this configuration, one defines the equipment or phase name along with its associated formula and report parameters.

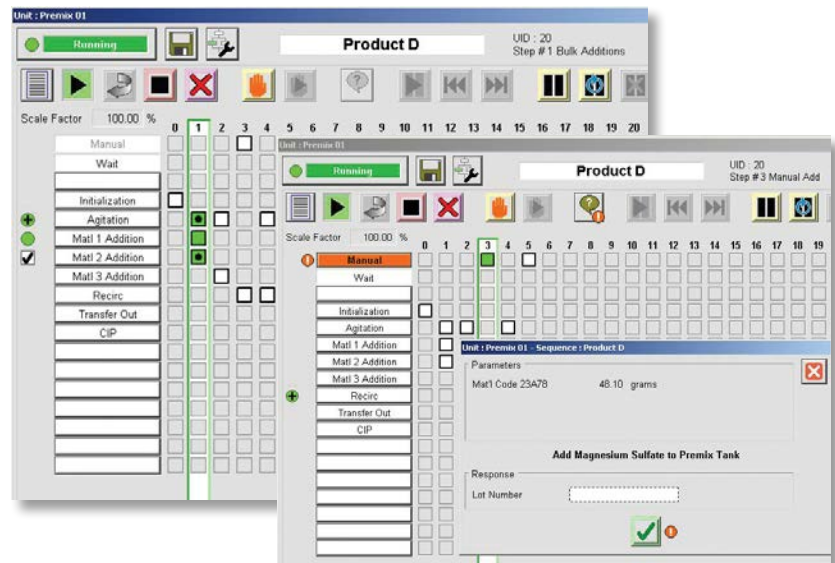


Step Configuration

PlantPAX Logix Batch & Sequence Manager is delivered with a standard user interface to build recipes. This editor provides a simple way to configure, organize and store process information according to the ISA88.01 procedural model and includes formula definitions, equipment requirements and the steps needed to make your product. In addition, you can take advantage of the secure, runtime editing capability built into the same configuration interface. This ensures maximum flexibility at any point in the process!

Operator Runtime Control

PlantPAX Logix Batch & Sequence Manager provides secure access to an intuitive run-time user interface using out-of-the-box functionality. This enables you to load recipes, control execution, respond to manual prompts and view information about the running system from any operator terminal. Take advantage of the detailed view when more information is required or embed summary controls directly into existing process control graphics. Regardless of your visualization needs, you will have the control you need, right at your fingertips!



Where To Get The Rockwell Automation Library of Process Objects

The Rockwell Automation Library of Process Objects can be downloaded from the Product Compatibility Download Center at:

<http://www.rockwellautomation.com/rockwellautomation/support/pcdc.page>

A TechConnectSM contract is required for access

FactoryTalk, eProcedure, Allen-Bradley and PhaseManager are trademarks of Rockwell Automation, Inc. Trademarks not belonging to Rockwell Automation are property of their respective companies.

www.rockwellautomation.com

Power, Control and Information Solutions Headquarters

Americas: Rockwell Automation, 1201 South Second Street, Milwaukee, WI 53204-2496 USA, Tel: (1) 414.382.2000, Fax: (1) 414.382.4444

Europe/Middle East/Africa: Rockwell Automation NV, Pegasus Park, De Kleetlaan 12a, 1831 Diegem, Belgium, Tel: (32) 2 663 0600, Fax: (32) 2 663 0640

Asia Pacific: Rockwell Automation, Level 14, Core F, Cyberport 3, 100 Cyberport Road, Hong Kong, Tel: (852) 2887 4788, Fax: (852) 2508 1846