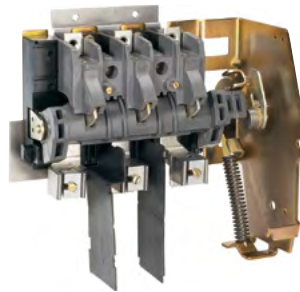


1494V/1494F Rod-operated and 1494C Cable-operated Disconnect Switches to 1494U Universal Disconnect Switch

1494U Universal Visible-Blade Disconnect Switch Features and Benefits

Users who apply Allen-Bradley® Bulletin 1494 visible-blade disconnect switches in applications of 600 amps and lower can now take advantage of the flexibility and convenience of the new bulletin 1494U Universal Disconnect Switch product line. A single universal mechanism accommodates rod-actuated and cable-actuated installations.

- **Visible blade design** – determine if the switch is ON or OFF at a glance
- **Global acceptance** – designed and tested to various international standards
- **Universal mechanism** – same switch can be connected to a threaded rod or a cable mechanism for reduced inventory
- **Smaller foot print** – up to 50% less panel space required
- **Ease of installation** – modular components with simple instructions in both printed and video formats
- **Thinner cable design** – more flexibility with six inch bend diameter
- **Switch design** – integrates phase barriers with line and load markings into the switch body
- **Fuse barriers** – scored for different fuse lengths and included with each fuse block
- **Snap-on accessories** – faster installation



End of Life: 1494V Variable-depth and 1494F Fixed Depth Disconnect Switches (200...600 A)



End of Life: 1494C Cable-operated Disconnect Switch (200...600 A)



1494U Universal Disconnect Switch



Product Life Cycle

Use the [Product Lifecycle Status](#) search tool on the web to find specific lifecycle information by catalog number.

- **ACTIVE:** Most current offering within a product category.
- **ACTIVE MATURE:** Product is fully supported, but a new product or family exists. Gain value by migrating.
- **END OF LIFE:** Discontinued date announced — actively execute migrations and last time buys. Product generally orderable until the discontinued date¹.
- **DISCONTINUED:** New product no longer manufactured or procured². Repair/exchange services may be available.

¹ Outages on specific items may occur prior to the Discontinued date.

² Limited stock may be available in run-out mode, regionally.



Catalog Number	1494V / C / F Description	Target Discontinued Date*	Recommended Replacement	1494U Description	Replacement Category**
1494V-DS200	200A R.H. Visible-Blade Disconnect Switch – Variable Depth	5/31/2019	1494U-D200	200A Visible-Blade Disconnect Switch	Engineered
1494V-DSX200	200A L.H. Visible-Blade Disconnect Switch – Variable Depth	5/31/2019	None	None	NA
1494F-D200	200A R.H. Visible-Blade Disconnect Switch – Fixed Depth & Cable Operator	5/31/2019	1494U-D200	200A Visible-Blade Disconnect Switch	Engineered
1494F-DX200	200A L.H. Visible-Blade Disconnect Switch – Fixed Depth & Cable Operator	5/31/2019	None	None	NA
1494V-DS400	400A R.H. Visible-Blade Disconnect Switch – Variable Depth	5/31/2019	1494U-D400	400A Visible-Blade Disconnect Switch	Engineered
1494V-DSX400	400A L.H. Visible-Blade Disconnect Switch – Variable Depth	5/31/2019	None	None	NA
1494F-D400	400A R.H. Visible-Blade Disconnect Switch – Fixed Depth & Cable Operator	5/31/2019	1494U-D400	400A Visible-Blade Disconnect Switch	Engineered
1494F-DX400	400A L.H. Visible-Blade Disconnect Switch – Fixed Depth & Cable Operator	5/31/2019	None	None	NA
1494V-FS200	200A Visible-Blade Disconnect Switch Fuse Block	5/31/2019	1494U-F200	200A Visible-Blade Disconnect Switch Fuse Block	Engineered
1494V-FS400	400A Visible-Blade Disconnect Switch Fuse Block	5/31/2019	1494U-F400	400A Visible-Blade Disconnect Switch Fuse Block	Engineered
1494V-FSV400	400A Visible-Blade Disconnect Switch Fuse Block	5/31/2019	1494U-F400	400A Visible-Blade Disconnect Switch Fuse Block	Engineered
1494C-CM5...16	Right-Hand Cable Operating Mechanism	5/31/2019	1494U-C{2 4 6}{4 5 6} – {Amp}{Length}	Right-Hand Cable Operating Mechanism	Engineered
1494C-CMX5...16	Left-Hand Cable Operating Mechanism	5/31/2019	None	None	NA
1494V Kits	200A / 400A / 600A Variable Depth Disconnect Switch Kits	5/31/2019	1494U Kits	1494U Universal Visible-Blade Disconnect Switch Kits	Engineered
1494C Kits	200A / 400A / 600A Cable Operator Disconnect Switch Kits	5/31/2019	1494U Kits	1494U Universal Visible-Blade Disconnect Switch Kits	Engineered
1494F Kits	200A Fixed Depth Disconnect Switch Kits	5/31/2019	None	None	None

* Discontinued date may be subject to change.

**Definition of replacement categories:

www.rockwellautomation.com

Allen-Bradley, Listen. Think. Solve., and Rockwell Software are trademarks of Rockwell Automation, Inc. Trademarks not belonging to Rockwell Automation are property of their respective companies.

Power, Control and Information Solutions Headquarters

Americas: Rockwell Automation, 1201 South Second Street, Milwaukee, WI 53204-2496 USA, Tel: (1) 414.382.2000, Fax: (1) 414.382.4444

Europe/Middle East/Africa: Rockwell Automation NV, Pegasus Park, De Kleetlaan 12a, 1831 Diegem, Belgium, Tel: (32) 2 663 0600, Fax: (32) 2 663 0640

Asia Pacific: Rockwell Automation, Level 14, Core F, Cyberport 3, 100 Cyberport Road, Hong Kong, Tel: (852) 2887 4788, Fax: (852) 2508 1846