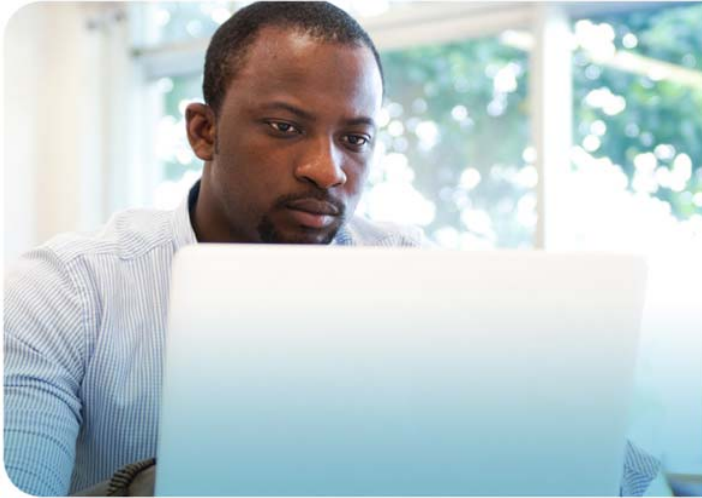


Virtual Classroom Course Description

Effective Maintenance Strategy: Preventive and Predictive Maintenance Program Development



Course Purpose

You will learn how to select the correct maintenance strategy for a piece of equipment or system, and the knowledge needed to implement the indicated strategy. The course focuses on the correct application of preventive, predictive, and run-to-failure strategies using the Reliability Centered Maintenance and FMEA approach.

Course Number: VC-MAINPROG-A

Who Should Attend

This course is recommended if you are a reliability engineer, maintenance manager, maintenance supervisor, or maintenance planner.

Virtual Classroom Learning Activities and Features

Rockwell Automation Virtual Classroom training is delivered by a live instructor using a blended learning style, which includes a combination of PowerPoint presentations, video, and/or animations, as well as interactive practice. Courses can include various learning activities and features:

- Polls/surveys
- Group and private chat
- White board
- Desktop sharing
- Passing control to students
- Break out rooms for small group discussion
- Check knowledge through testing

COURSE AGENDA

- Understand and be able to select the proper maintenance strategy for a given situation (Re-Engineer, PM, PdM, RTF)
- Understand and apply the basic RCM Process to identify failure modes and the interventions needed to address them
- Design specific and effective maintenance standards for preventive and predictive inspections
- Establish specific measures (KPIs) to monitor the evolution and success of their selected maintenance strategies
- Develop and implement a system to audit the execution of preventive and predictive activities

Student Materials

You will receive the following course materials:

- Effective Maintenance Scheduling Student Manual (in electronic format to print on your own)

Course Length

1 day



Rockwell Automation CEUs
0.7 CEUs

Technology Requirements

- A computer and phone are required. For minimum computer requirements for the virtual classroom tool, please visit: <http://support.webex.com/support/system-requirements.html>

LISTEN.
THINK.
SOLVE.™

www.rockwellautomation.com

Power, Control and Information Solutions Headquarters

Americas: Rockwell Automation, 1201 South Second Street, Milwaukee, WI 53204 USA, Tel: (1) 414.382.2000, Fax: (1) 414.382.4444

Europe/Middle East/Africa: Rockwell Automation, Vorstlaan/Boulevard du Souverain 36, 1170 Brussels, Belgium, Tel: (32) 2 663 0600, Fax: (32) 2 663 0640

Asia Pacific: Rockwell Automation, Level 14, Core F, Cyberport 3, 100 Cyberport Road, Hong Kong, Tel: (852) 2887 4788, Fax: (852) 2508 1846