

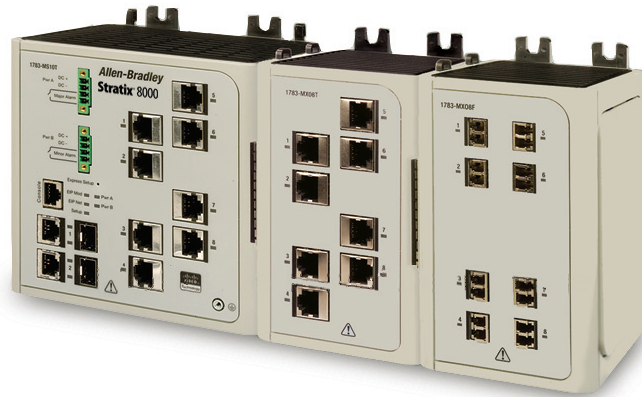
# Stratix 8000 and Stratix 8300

## Industrial Ethernet Switches



### Features and Benefits

- Layer 3 routing capabilities
- Power over Ethernet expansion modules helps reduce wiring cost
- Management and diagnostics within both IT and controls environment
- Removable CompactFlash stores configuration for easy device replacement
- Default configurations for industrial automation and EtherNet/IP devices (Global and Smartports)
- Studio 5000® Add-on Profiles (AOPs) enable premier integration into the Rockwell Automation Integrated Architecture® system
- Predefined Logix tags for monitoring and port control
- FactoryTalk® View faceplates enable status monitoring and alarming
- Built-in Cisco® Internet Operating System (IOS) helps provide secure integration with enterprise network



The Rockwell Automation Stratix 8000®/Stratix 8300® industrial Ethernet switch line with Cisco technology is the first of its kind. This modular managed switch line uses the current Cisco Catalyst switch architecture and feature set, along with powerful configuration tools, helping to provide secure integration with the enterprise network using tools familiar to IT professionals. At the same time, it allows easy setup and diagnostics from within the Rockwell Automation Integration Architecture using tools familiar to manufacturing professionals.

The Stratix 8000 is a Layer 2 switch. The Stratix 8300 embodies the same capabilities as the Stratix 8000, but is a Layer 3 switch that supports routing between Subnets and VLANs.

Copper, fiber, SFP and Power over Ethernet expansion modules can all be added to a Stratix 8000/Stratix 8300 system. Copper and Fiber expansion modules can be combined to provide additional copper and fiber ports on your system. SFP expansion modules can add up to 12 fiber ports with the ability to mix and match multi-mode and single mode SFPs. Power over Ethernet (PoE) modules pass electrical power along with data on Ethernet cabling. This allows a single cable to provide both data connection and electrical power to devices such as wireless access points – reducing wiring and improving the ability to turn devices on/off for power savings and added security.

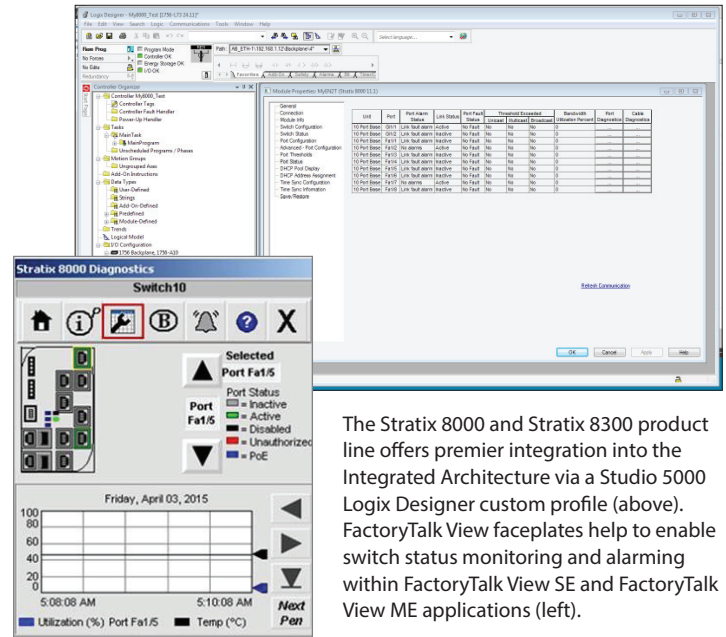
LISTEN.  
THINK.  
SOLVE.®

## Layer 3 Routing

As the evolution of Ethernet on the plant floor continues to grow exponentially with new applications such as motion, safety and I/O, IP traffic has increased significantly and proper segmentation to the network is becoming more important. VLANs become a best practice to segment networks by function rather than location in the plant. The Stratix 8300 with Layer 3 functionality provides communications between the segmented networks for better performance and better security.




Proper segmentation allows users to:

- Avoid the high cost of expanding plant networks when increasing production by adding new machines
- Improve performance compared to software-based routers
- Protect against broadcast noise while allowing workstations access to the required resources



The Stratix 8000 and Stratix 8300 product line offers premier integration into the Integrated Architecture via a Studio 5000 Logix Designer custom profile (above). FactoryTalk View faceplates help to enable switch status monitoring and alarming within FactoryTalk View SE and FactoryTalk View ME applications (left).

## Specifications

Base Modules		
	1783-MS06T	6 port Layer 2 managed
	1783-MS10T	10 port Layer 2 managed
	1783-RMS06T	6 port Layer 3 managed
	1783-RMS10T	10 port Layer 3 managed
Expansion Modules		
	1783-MX08T	Expansion module with 8 10/100 Base-T copper Ethernet ports
	1783-MX08F	Expansion module with 8 100 Base-F fiber-optic Ethernet ports
	1783-MX04S	Expansion module with 4 100 FX fiber-optic SFP slots
	1783-MX08S	Expansion module with 8 100 FX fiber-optic SFP slots
Power over Ethernet Modules		
	1783-MX04E	Expansion module with 4 Power over Ethernet ports
	1783-MX04T04E	Ethernet expansion module with 4 10/100 Base-T copper Ethernet ports and 4 Power over Ethernet ports

More detailed information is available in the Stratix Ethernet Device Specifications Technical Data Publication at: [http://literature.rockwellautomation.com/idc/groups/literature/documents/td/1783-td001\\_-en-p.pdf](http://literature.rockwellautomation.com/idc/groups/literature/documents/td/1783-td001_-en-p.pdf)

Allen-Bradley, FactoryTalk, Integrated Architecture, Listen.Think.Solve., Studio 5000, Stratix 8000 and Stratix 8300 are trademarks of Rockwell Automation Inc. Trademarks not belonging to Rockwell Automation are property of their respective companies.

[www.rockwellautomation.com](http://www.rockwellautomation.com)

### Power, Control and Information Solutions Headquarters

Americas: Rockwell Automation, 1201 South Second Street, Milwaukee, WI 53204-2496 USA, Tel: (1) 414.382.2000, Fax: (1) 414.382.4444

Europe/Middle East/Africa: Rockwell Automation, Vorstlaan/Boulevard du Souverain 36, 1170 Brussels, Belgium, Tel: (32) 2 663 0600, Fax: (32) 2 663 0640

Asia Pacific: Rockwell Automation, Level 14, Core F, Cyberport 3, 100 Cyberport Road, Hong Kong, Tel: (852) 2887 4788, Fax: (852) 2508 1846

Publication ENET-PP002E-EN-P – June 2016

Supersedes Publication ENET-PP002D-EN-P – September 2015

Copyright ©2016 Rockwell Automation, Inc. All Rights Reserved. Printed in USA.