

Emonitor Condition Monitoring Software (v4.1)

Predictive maintenance software to manage any size program by Rockwell Automation

No matter what requirements you have – simple or complex, the Emonitor Condition Monitoring Software (CMS) is a one-size-fits-all solution for establishing and executing a condition-based predictive maintenance program. CMS combines all the capabilities from the entire legacy Emonitor suite into one solution. There are no tag limits, no functional levels, no decisions to make between budget and function.

Features and Benefits

Online analysis and monitoring

- View live data from any 1444 series monitor on any machine, by any user from any location
- Easily automate scheduled and triggered data collection with new tools for the Dynamix 1444 online monitors

Offline data collection

- Supports Dynamix 2500 and Enpac 2500 Data Collectors
- Download defect frequencies to collectors

Integration tools to suit any need

- Share data with 3rd party applications with the included OPC Server
- Import data from any OPC Server
- Easily export any measurement data with plots to Excel
- Logix triggered data
- Discrete element monitoring

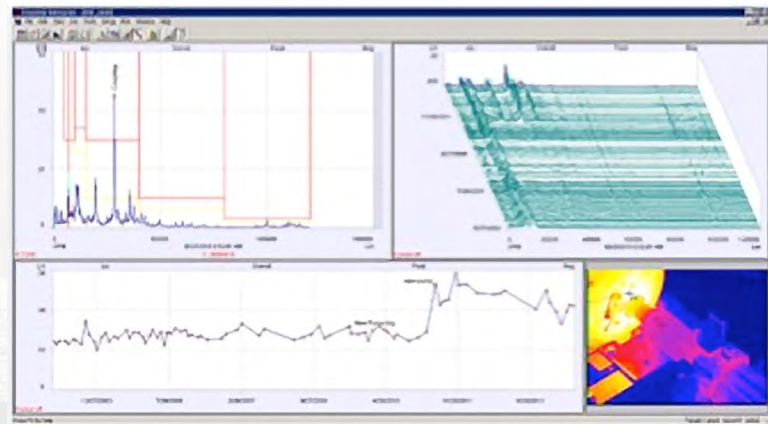
Automated diagnostics

- Fault Frequency Identification
- Built-in and user editable rule sets

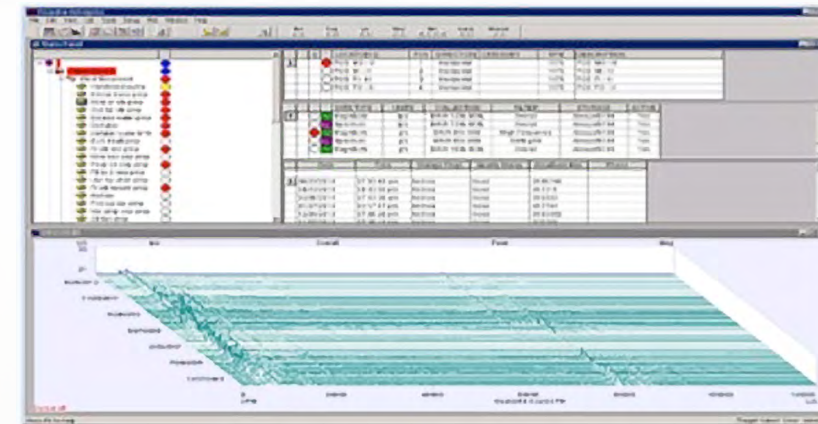


Emonitor Condition Monitoring Software

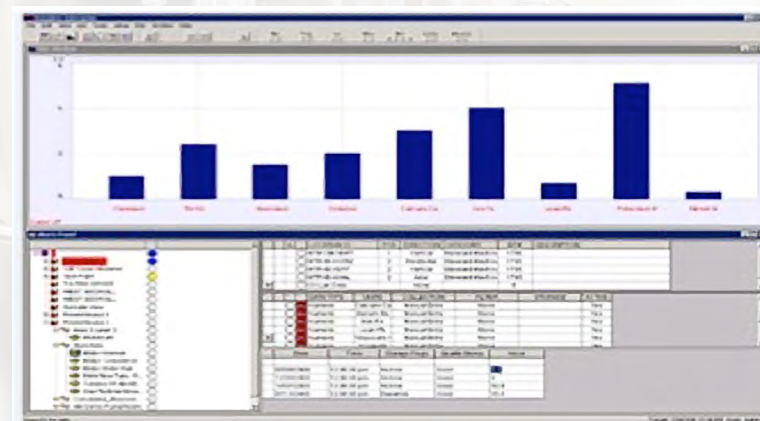
Predictive maintenance software to manage any size program by Rockwell Automation



Link plots in a view so that a spectra, thermographic image or other display update as a cursor is moved on a linked trend plot.



Work how you want to work: customize your workspace and save it as a view you can use whenever you want



Units Plot – gives you a quick overview of oil data

Emonitor Condition Monitoring Software

Predictive maintenance software to manage any size program by Rockwell Automation

Emonitor CMS v4.1 Functional Summary

Supported Devices & Instruments

Product	Description
Dynamix 1444	Protection & Condition Monitor
XM 1440	Protection & Condition Monitor
Enwatch	Surveillance Monitor
Dynamix 2500	Portable Data Collector
Enpac 2500	Portable Data Collector
Logix Controller	Automation Control

Data Interfaces

Capability	Description
OPC Client	Data Input
OPC Server	Data Output Server
Export to Excel	Data from any plot
Oil lab data import	Format file input from supported labs

Analysis Tools

Function	Description
Trend Projection	plot tool; selectable curve fit
Advanced Cursors	plot tool; linked plots, single, delta, harmonic cursors
Automated Diagnosis	expert system; almost 200 predefined rules, easily add user defined rules using intuitive linked objects rules editor
Fault Frequency Identification	plot tool; automatic, applied to plots & reports
Defect Frequency Modeling	plot tool; rotating speeds, bearings, shafts, gears, belts, harmonics, sidebands & motors
Calculated Measurements	utility; applied same as measured data, edit using simple wizard interface
Defect frequencies	utility; downloaded to data collectors
Bearing Database	resource; over 7000 bearings
Real Time Analyzer	utility; standalone, freely distributed utility for viewing live data from any Dynamix 1444 system

Database

Item	Description
Management	create and manage databases using the standard MS SQL Management Studio familiar to IT resources
Number	create as many databases as appropriate for your application
User Access	each Emonitor license provides 4 concurrent connections. Each additional license allows 4 additional connections
Data Access	discrete data such as overalls and alarm status are directly accessible using any standard SQL query tool

Plot Types

Complex	Discrete
Spectrum, Waterfall	Trend, Average Trend, X vs Y
Time Waveform, Orbit	Multiple Unit Single Data
Customizable Analysis Views	Shaft Centerline / Polar

Data Types

Vibration	Element
FFT, Time Waveform	Numeric, Calculated, Enumerated
Magnitude, Vector	ActiveX, Image

Alarms

Types	Methods
Constant (above, below, window)	Rate of Change
Band	Statistical
Envelope	Percent Change

Reporting

Report Types	Report Capabilities
Exception Report	Work Order Generator
Spectrum Exception Report	Custom Report Editor
Maintenance Advisory	Over 30 Preconfigured Reports

Hardware and Software Requirements





Emonitor CMS 4.1 Client

	Minimum	Recommended
O/S	Windows 10/11	
RAM	8 GB	16+ GB
Disk Space*	250 MB	500 MB

* Required free disk space is for application files only. Add additional free space if database files will be stored locally.

Database Server

	Minimum	Recommended
O/S	Any O/S compatible with supported Database Platform	
RAM	8 GB	16+ GB
Disk Space	500 MB	1+ GB
Disk Config	7,200 rpm HDD	M.2 SSD
DB Platform	MS SQL Server 2017 and 2019	

Connect with us.    

rockwellautomation.com

expanding human possibility®

AMERICAS: Rockwell Automation, 1201 South Second Street, Milwaukee, WI 53204-2496 USA, Tel: (1) 414.382.2000, Fax: (1) 414.382.4444
 EUROPE/MIDDLE EAST/AFRICA: Rockwell Automation NV, Pegasus Park, De Kleetlaan 12a, 1831 Diegem, Belgium, Tel: (32) 2663 0600, Fax: (32) 2 663 0640
 ASIA PACIFIC: Rockwell Automation, Level 14, Core F, Cyberport 3, 100 Cyberport Road, Hong Kong, Tel: (852) 2887 4788, Fax: (852) 2508 1846
 UNITED KINGDOM: Rockwell Automation Ltd., Pitfield, Kiln Farm, Milton Keynes, MK11 3DR, United Kingdom, Tel: (44)(1908) 838-800, Fax: (44)(1908) 261-917

Allen-Bradley and expanding human possibility are trademarks of Rockwell Automation, Inc. Trademarks not belonging to Rockwell Automation are property of their respective companies.

Publication EMONTR-PP001B-EN-P - January 2023 | Supersedes Publication EMONTR-PP001A-EN-P - May 2016

Copyright © 2023 Rockwell Automation, Inc. All Rights Reserved. Printed in USA.