

# Bulletin 700-FE

## DIN rail timing relays

### Features and Benefits

- Only 17 mm wide for space-sensitive applications
- DIN rail mounted without cost of socket
- Single function or multi-function units
- Time range from 0.05 seconds to 100 hours
- Built-in LED indicator for status monitoring
- 5 A contact rating
- Coil surge protection
- Wide range of output voltage
- Seven timing functions available



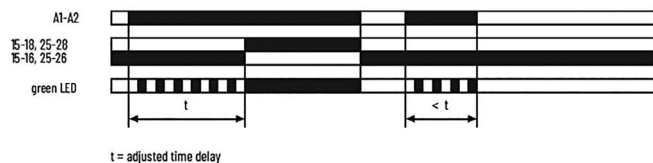
700-FEM6TU23

### Overview

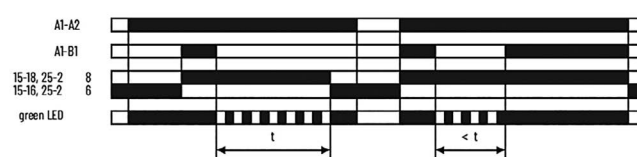
At 17 mm, the Bulletin 700-FE DIN Rail Timing Relays are the smallest Allen-Bradley® DIN rail products with a timing range of 0.05 seconds to 100 hours. There are four single function timing versions available (on delay, off delay, one shot, repeat cycle starting with pulse) for customers who require a specific function at the lowest possible price. However, if a user requires many different timing functions and would like to reduce their inventory and simplify their design requirements, a slightly higher cost multi-function timer is available which has seven timing functions in one part number.

## Function Diagrams – 700-FE Relays

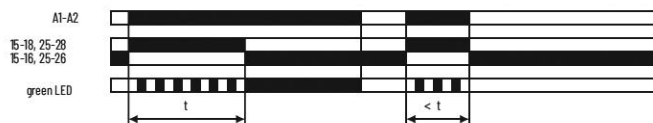
### (A) On-Delay



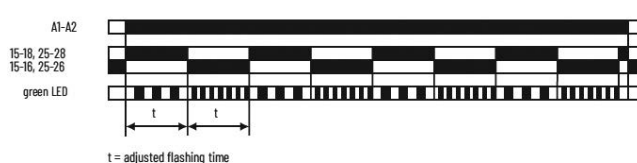
### (B) Off-Delay



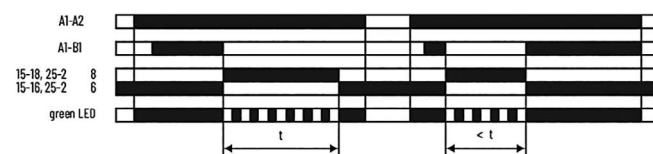
### (D) One Shot [Impulse On]



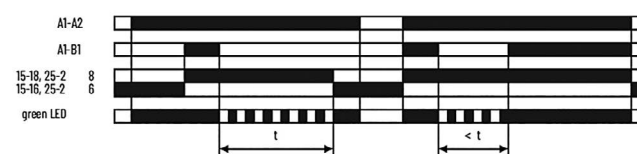
### (F) Flasher [Repeat Cycle Starting with Pulse]



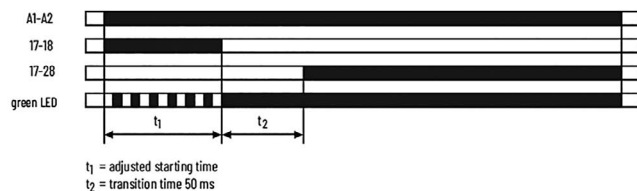
### (E) Fleeting Off Delay [Impulse Off]



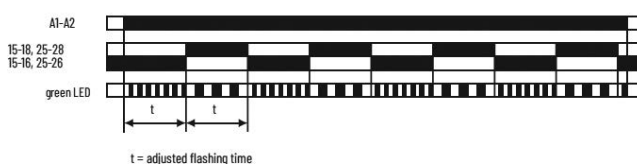
### (L) Pulse Converter [Pulse Former]



### (Y) Star Delta Timing Relay



### (G) Flasher [Repeat Cycle Starting with Pause]



Connect with us. [f](#) [i](#) [in](#) [t](#)

rockwellautomation.com — expanding human possibility®

AMERICAS: Rockwell Automation, 1201 South Second Street, Milwaukee, WI 53204-2496 USA, Tel: (1) 414.382.2000, Fax: (1) 414.382.4444  
EUROPE/MIDDLE EAST/AFRICA: Rockwell Automation NV, Pegasus Park, De Kleetlaan 12a, 1831 Diegem, Belgium, Tel: (32) 2 663 0600, Fax: (32) 2 663 0640  
ASIA PACIFIC: Rockwell Automation, Level 14, Core F, Cyberport 3, 100 Cyberport Road, Hong Kong, Tel: (852) 2887 4788, Fax: (852) 2508 1846

Allen-Bradley, expanding human possibility and Rockwell Automation are trademarks of Rockwell Automation, Inc.  
All other trademarks are property of their respective companies.

Publication 700-PP028B-EN-P – May 2022 | Supersedes Publication 700-PP028A-EN-P – November 2008  
Copyright © 2022 Rockwell Automation, Inc. All Rights Reserved. Printed in USA.