

# Bulletin 6176M - Standard Industrial Monitors

1550M, 1750M, and 1950M Industrial Monitors

Visualizing your application's critical information just got easier. Allen-Bradley® industrial monitors from Rockwell Automation offer industry leading reliability at very cost competitive prices. Whether your visualization application is on the factory floor or in a control room, the monitor portfolio has the mounting configuration and interface options you require.

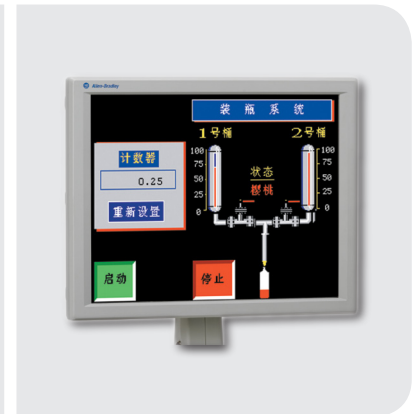
## Advantages

The 1550M, 1750M, and 1950M industrial monitors are available in a new vesa mount configuration. For monitors that are mounted to articulating arms or desktop stands, the vesa mount configuration provides a clean, "desktop" look. Our industrial monitors are also available in a panel mount configuration that provides a NEMA 4, IP65 seal to the enclosure. Both monitor configurations feature a metal reinforced infrastructure. These monitors are designed for ease of use. All monitors have USB and RS232 touchscreen inputs, DVI and VGA video inputs, and an On Screen Display (OSD) that enables image rotation, color pallet changes, and a simple auto reset with just the push of a button. Plus, all industrial monitors include the following tools and services:

- Stocked for quick delivery
- Global sales and support
- Immediate exchange
- Cost effective platforms for today's demanding applications
- Driver support for major 32 and 64 bit desktop and server operating systems



6176M/1950M  
Industrial Monitors



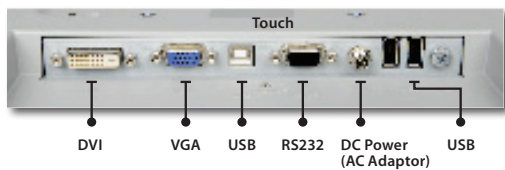
Vesa mount monitor – NEMA 1  
Rated Features steel reinforced  
chassis for industrial environments

**Bulletin 6176M Standard Monitors now  
feature Windows 7 Pro 64 bit support**

LISTEN.  
THINK.  
SOLVE.™

# Industrial Monitor Selection Table

Catalog Number	15" Display	17" Display	19" Display	Vesa Mount	Panel Mount	Rack Mount	Resistive Touchscreen	Plastic Bezel	Aluminum Bezel
6176M-15VN	•			•				•	
6176M-15VT	•			•			•	•	
6176M-15PN	•				•				•
6176M-15PT	•				•		•		•
6176M-17VN		•		•				•	
6176M-17VT		•		•			•	•	
6176M-17PN		•			•				•
6176M-17PT		•			•		•		•
6176M-19VN			•	•				•	
6176M-19VT			•	•			•	•	
6176M-19PN			•		•	•			•
6176M-19PT			•		•	•	•		•



## Industrial Computer Specifications

(For up-to-date specifications, accessories, drivers, manuals, and service information visit [www.ab.com/industrialcomputers](http://www.ab.com/industrialcomputers).)

Description	1550M (6176M) Flat Panel Industrial Monitor	1750M (6176M) Flat Panel Industrial Monitor	1950M (6176M) Flat Panel Industrial Monitor
<b>DISPLAY</b>			
Display Type & Size	15-inch (381 mm) Color Active Matrix TFT	17-inch (431.8 mm) Color Active Matrix TFT	19-inch (482.8 mm) Color Active Matrix TFT
Bezel Types	Panel Mount: Aluminum Alloy, Vesa Mount: Plastic (steel reinforced)		
Resolution	1024 x 768 (native mode), 16.7M colors, Contrast 400:1	1280 x 1024 (native mode), 16.7M colors, Contrast 800:1	1280 x 1024 (native mode) 16.7M colors, Contrast 800:1
Luminance (typical)	350 cd/m <sup>2</sup> (Nits)	300 cd/m <sup>2</sup> (Nits)	300 cd/m <sup>2</sup> (Nits)
Touch Screen Option	Resistive anti-glare. Both RS232 and USB inputs.		
Controls and Indicators	Rear controls: automatic screen setup (OSD), brightness, contrast, horizontal position, vertical position, image lock, color balance, and video information		
Video Input	VGA and DVI (system auto-select)		
USB hub	2 USB 2.0		
<b>ELECTRICAL &amp; ENVIRONMENTAL</b>			
Power Requirements	90...264V AC, autoranging; 47...63Hz		
Operating Temperature	0 - 45°C (32 - 113°F)		
Vibration - Operating	1 g peak, swept sine 10...500Hz		
Shock - Operating	15 g (1/2 sine, 11 ms)		
Ratings	NEMA Types 1/12/4, IP66		
Certifications	C-UL certified, UL listed component, CE Mark, C-Tick		
<b>MECHANICAL</b>			
Mounting Options	Panel, vesa arm or bench/tabletop mounting		Panel, vesa arm, rack or bench/tabletop mounting
Dimensions Overall	Vesa mount: 282.6 x 383.6 x 50.0 mm	Vesa mount: 326.5 x 421.0 x 53.0 mm	Vesa mount: 357.0 x 444.0 x 58.0 mm
(HxWxD)	Panel mount: 309.0 x 410.0 x 50.0 mm	Panel mount: 356.0 x 452.0 x 53.0 mm	Panel mount: 399.3 x 482.6 x 58.0 mm
<b>OS Drivers</b>			
Touch Screen	Windows XP Pro (Series B and newer) • Windows Server 2003 (Series B and newer) • Windows 7 Pro 32 Bit (Series B and newer) Windows 7 Pro 64 Bit (Series C and newer) • Windows Server 2008 (Series C and newer)		

[www.rockwellautomation.com](http://www.rockwellautomation.com)

### Power, Control and Information Solutions Headquarters

Americas: Rockwell Automation, 1201 South Second Street, Milwaukee, WI 53204-2496 USA, Tel: (1) 414.382.2000, Fax: (1) 414.382.4444

Europe/Middle East/Africa: Rockwell Automation NV, Pegasus Park, De Kleetlaan 12a, 1831 Diegem, Belgium, Tel: (32) 2 663 0600, Fax: (32) 2 663 0640

Asia Pacific: Rockwell Automation, Level 14, Core E, Cyberport 3, 100 Cyberport Road, Hong Kong, Tel: (852) 2887 4788, Fax: (852) 2508 1846