


WHY CHOOSE AN ON-MACHINE SOLUTION?

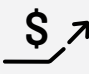
An On-Machine™ solution is a decentralized equipment design approach that helps reduce the challenges seen in cabinet-based solutions for End Users.

✓



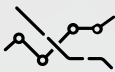
Meet **aggressive timelines**

✓




Decrease **installation costs**

✓

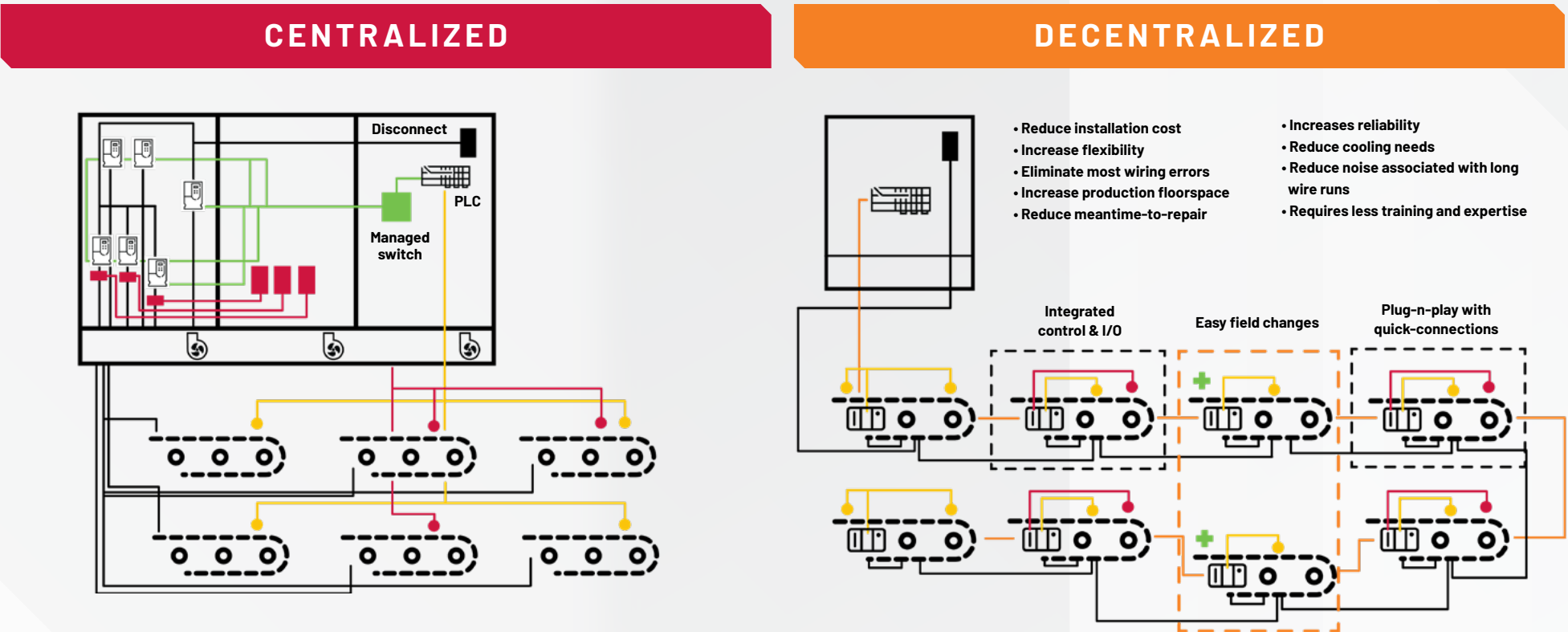


Reduce **exposure to risk**

✓



Increase **system value**



An On-Machine solution offers

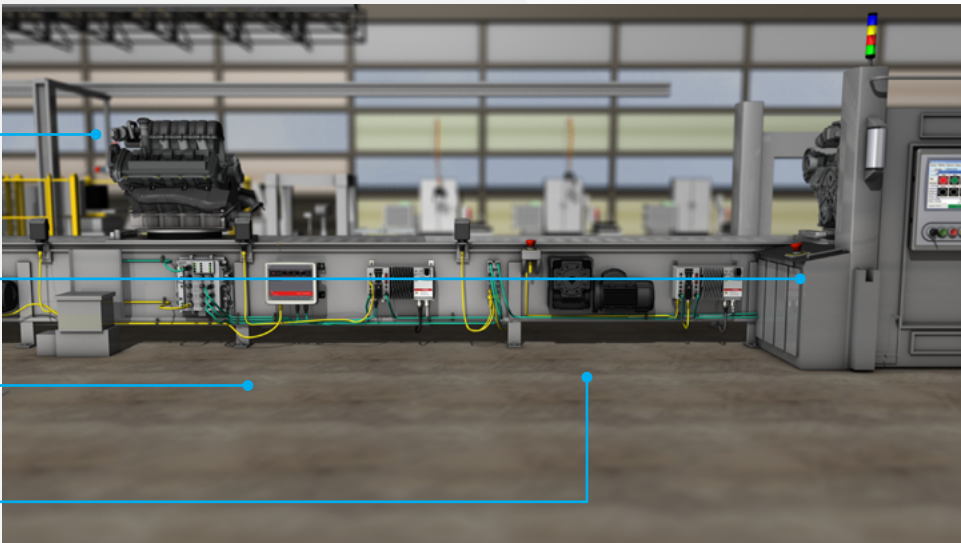
MATERIAL HANDLING | AUTOMOTIVE & TIRE | BAGGAGE HANDLING | FOOD & BEVERAGE | INTRA-LOGISTICS | E-COMMERCE

A simpler, more modular approach to machine design lowers total costs

Moving controls and hardware out of the cabinet – and closer to the application - **saves floor space and minimizes time to deploy**

Quick connect technology **speed design installation and maintenance** - and **improve productivity and flexibility**

On-Machine solutions are **environmentally robust**, helping to reduce risk of failure



COST COMPARISON								
	Design & engineering time	Installation time	Change-over time	Wiring errors	Downtime for replacement	Enclosure floor space	Hardware cost	Total system cost
Centralized	\$\$	\$\$	\$\$	\$\$	\$\$	\$\$	\$	\$\$
Decentralized	\$	\$	\$	\$	\$	\$	\$\$	\$

WHY ARMORKINETIX DISTRIBUTED SERVO DRIVES

It is now possible to simplify designs, reduce costs and create the next generation of performance machines.



Lowered total
system cost



Reduced **machine**
footprint



Improved
productivity



Increased
uptime

Operate Leaner, Greener Smart Machines

INNOVATIVE DESIGN

Revolutionize your next machine design using the power of decentralized motion control. Our industry leading distributed servo drives help you build machines with fewer components, smaller footprints and increased scalability.

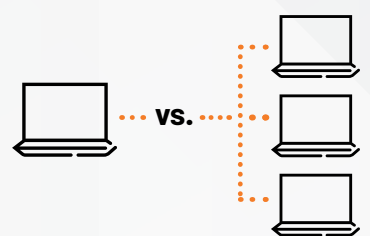
The ArmorKinetix® platform features:

- Compact designs with best-in-class power density
- Virtual torque sensing
- IP66/67 rated housings



QUICK INTEGRATION AND UNIFIED EXPERIENCE

Speed your time to value with a servo drive solution that is easy to install and intuitive to understand. Using Premier Integration you can program system motion, power, control and safety in one programming environment. Then, after the system is operational, you can benefit from a consistent On-Machine experience to act swiftly and make informed decisions.



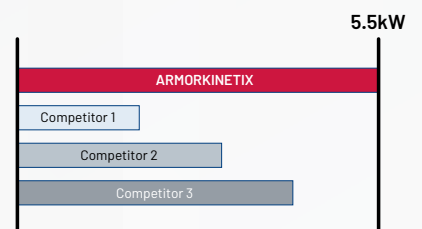
ENERGY EFFICIENCY

Looking to advance your sustainability goals? These servo drives feature minimal derating - meaning that you can right-size your motor/ drive pairing for better energy performance and increased longevity. Plus, since it is field-mounted, you can reduce or eliminate the costs associated with enclosure temperature control.



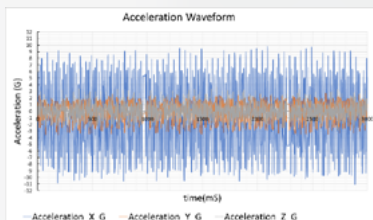
EXTENSIVE POWER RANGE

ArmorKinetix servo drives scale to your application needs with a portfolio that reaches up to 5.5kW. This enables you to expand the value of ArmorKinetix across multiple motion processes and create your ultimate smart machine.



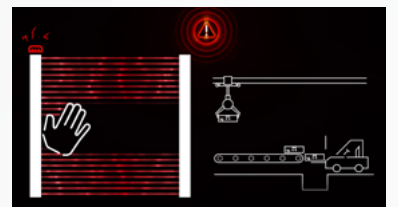
PREDICTIVE ANALYTICS AND DIAGNOSTICS

By using data-rich information from the drive's integrated vibration and thermal sensors, you can gain new insights into your machines to improve your predictive maintenance and avoid unplanned downtime. If an issue does occur, it is easy to quickly swap out or bypass the drive to keep production moving.



SAFETY & SECURITY

Safety and security are critical to reducing your risk exposure and advancing productivity. The ArmorKinetix platform features Integrated Advanced Safety and CIP Security in a single cable solution. This reduces costs and simplifies the safety network so your machines get up and running faster.



How Could Your Machines Benefit?

MORE FLEXIBLE | **MORE MODULAR & EXPANDABLE** | **MORE SUPPORTABLE**

DISTRIBUTED SERVO DRIVE

- 200 / 400V class product
- CIP Security
- IP66/67 rated
- Device Level Ring capable
- Connect any combination of 24 Distributed Servo Drives and Distributed Servo and Motors in each ring
- Advanced integrated safety - SIL 3
- Zero stack mounting

Supports the following motors:

- Kinetix® VP Motors in 63mm to 130mm frame sizes
- Kinetix® MP Motors with Hiperface sin/cos feedback in 100mm to 130mm frame sizes
- Linear motors
- Induction motors with open loop or closed loop control



DISTRIBUTED SERVO AND MOTOR

- 200 / 400V class product
- CIP Security
- Up to IP66/67 rating
- Device Level Ring capable
- Connect any combination of 24 Distributed Servo Drives and Distributed Servo and Motors in each ring
- Standard encoder or Safety SIL 2 encoder
- Holding brake option

Features an integrated Kinetix® VPL Motor in the following frame sizes:

- 75mm
- 100mm
- 115mm
- 130mm

