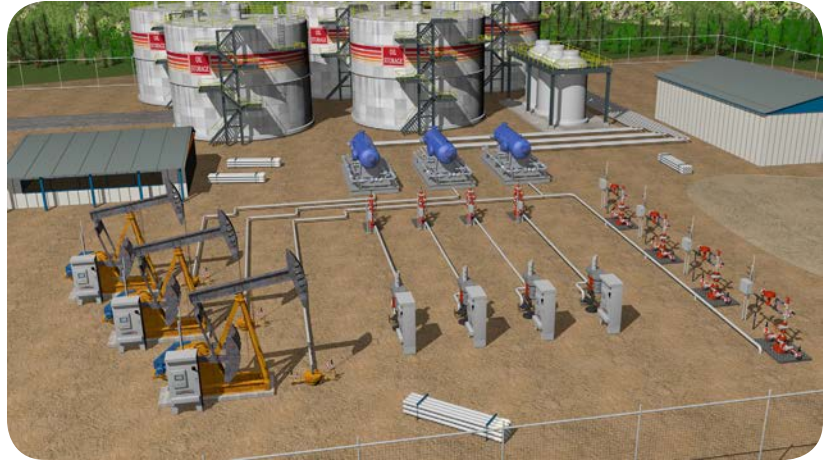


## Well Pad Automation

The Rockwell Automation® Well Manager is a pre-engineered solution that is customizable to your unique well pad automation needs. Your engineering staff can realize the following benefits:

- Configure multi-well sites up to 32 wells using ControlLogix® or CompactLogix™ controllers
- Control up to 32 artificial lift operations and up to 80 custody transfer flow runs for gas and liquids
- Control and configure artificial lift operations like rod pumps, plunger lifts, gas lifts, ESP, PCP and natural flowing wells as part of the solution
- Improve productivity with real-time data that supports visualization, alarming, interrupts and failures
- Integrate with your existing systems and utilize well site-wide diagnostics
- Reduce maintenance costs, revision control, training and support with the use of an advanced automation controller to support a multi-well environment
- Connect using EtherNet/IP and integrate to a ConnectedProduction™ or 3rd party SCADA system



Well Manager supports small to large well sites and is scalable up to 32 wells.

The practice of horizontal drilling in shale formations has changed the exploration and production (E&P) landscape. Rather than the one well per pad as found with traditional vertical wells, E&P companies can drill multiple wells from one location, thanks to horizontal drilling. Multi-well pads provide a host of benefits, including easier permitting, reduced drilling costs, more efficient and less disruptive land use and well-pad location flexibility.

Rockwell Automation Well Manager solution is a pre-engineered control solution designed to provide easy integration of a multi-well pad with pre-programmed artificial lift operations, custody transfer-flow data, site-wide HMI and custom integration capabilities.

A user-friendly interface allows full configuration of Well Manager and provides operator control and data retrieval with extensive visualization, alarming and diagnostics such as interrupts, communication failures and device anomalies. A ControlLogix® programmable automation controller extends this data to your existing SCADA system.

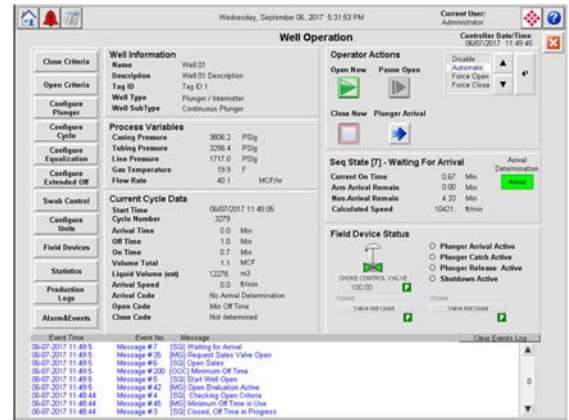
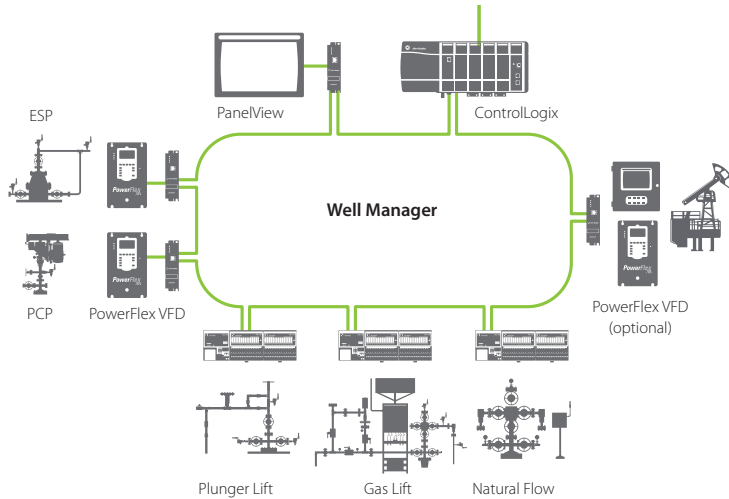
Well Manager includes a range of standard features and allows extensive end-user customization:

- Artificial lift and flow computer configurable and visualization via Windows PC, such as Allen-Bradley® 6181 industrial PC
- Site specific customization with Studio 5000® programming
- Configure any combination of up to 32 artificial lift operations, including rod pumps, plunger lift, gas lift, ESP, PCP and natural flow
- Up to 80 custody transfer flow runs for gas or liquids configured via Windows PC graphic user interface
- Supports Enron Modbus and Flow-Cal flow computer reporting



LISTEN.  
THINK.  
SOLVE.®

# Well Manager Architecture and Reporting Screen



## Well Manager Standard Configurations

Standard Configurations	
Catalog Numbers	• 1759-PAC-16WellManager (16 artificial lift operations and 32 flow runs)
	• 1759-PAC-32WellManager (32 artificial lift operations and 80 flow runs)
	• 1759-PAC-32EFM (32 flow runs – no artificial lift operations)
	• 1759-PAC-80EFM (80 flow runs – no artificial lift operations)
System Hardware	
Controller Hardware (Engineered to Order)	• Site Controller – 16 Well Site – CompactLogix™ with ProSoft AFC flow computer modules
	• Site Controller – 32 Well Site – ControlLogix® with ProSoft AFC flow computer modules
	• Allen-Bradley® FLEX™ I/O as required for artificial lift operations
	• Allen-Bradley® POINT I/O™ as required for artificial lift operations, and ProSoft ILX-34 as required for Modbus field devices
	• Rockwell Automation rDAC iXC2 and iXMS as required for flow measurement and Modbus field devices
• Allen-Bradley® Bulletin 6181 Industrial PC or commercially available substitute for system configuration and visualization	
SCADA Host Communications	
Ethernet Protocols	• EtherNet/IP, Modbus TCP, Enron Modbus
Serial Protocols	• Modbus RTU, Enron Modbus

Allen-Bradley, CompactLogix, ConnectedProduction, ControlLogix, FLEX I/O, LISTEN. THINK. SOLVE., POINT I/O, Rockwell Automation, Rockwell Software and Studio 5000 are trademarks of Rockwell Automation, Inc. Trademarks not belonging to Rockwell Automation are property of their respective companies.

[www.rockwellautomation.com](http://www.rockwellautomation.com)

### Power, Control and Information Solutions Headquarters

Americas: Rockwell Automation, 1201 South Second Street, Milwaukee, WI 53204-2496 USA, Tel: (1) 414.382.2000, Fax: (1) 414.382.4444

Europe/Middle East/Africa: Rockwell Automation NV, Pegasus Park, De Kleetlaan 12a, 1831 Diegem, Belgium, Tel: (32) 2 663 0600, Fax: (32) 2 663 0640

Asia Pacific: Rockwell Automation, Level 14, Core F, Cyberport 3, 100 Cyberport Road, Hong Kong, Tel: (852) 2887 4788, Fax: (852) 2508 1846