

## Microsoft Windows 10 IoT Enterprise 2019 LTSC and 2016 LTSB System Upgrade Kit

Catalog Numbers 6177R, 6181P, 6181X

Topic	Page
Summary of Changes	1
Parts Included in Kit	1
Install the Two Labels	2
Download and Install the Windows 10 IoT Enterprise LTSC or LTSB OS	4
Additional Resources	11

### Summary of Changes

This publication contains the following new or updated information. This list includes substantive updates only and is not intended to reflect all changes. Translated versions are not always available for each revision.

Topic	Page
Revised label in For 6177R Series C Computers (750R and 1450R models)	2
Updated available image tables in Step 7 of Download and Install the Windows 10 IoT Enterprise LTSC or LTSB OS	5

### Parts Included in Kit

The following items are included in the upgrade kit:

- Rockwell Automation® Windows 10 upgrade label
- Microsoft Windows® 10 IoT Enterprise Certificate of Authenticity (COA) label
- Publication IC-IN001 (this document)

This publication provides instructions on where to install the two labels that are part of this kit, and how to download and upgrade to the Microsoft Windows 10 IoT Enterprise Long Term Service Channel (LTSC) and Long Term Service Branch (LTSB) operating systems (OS).

---

**IMPORTANT** This upgrade applies only to Rockwell Automation 6177R Series C and 6181P Series F industrial computer models.

---



**ATTENTION:** If you upgrade your computer to the Windows 10 IoT Enterprise LTSB OS, then you must affix both labels as specified in this publication to complete the upgrade. Failure to do so is a violation of the Microsoft End User License Agreement.

---

## Install the Two Labels

Each replacement label is shipped in its own envelope. The Microsoft Certificate of Authenticity (COA) label is in a Microsoft labeled envelope.

To install the two replacement labels, perform the following steps:

### Rockwell Automation Windows 10 Upgrade Label

*For 6181P Series F Computers*

1. Locate the barcode label on the side of the computer.
2. Place the Rockwell Automation Windows 10 upgrade label over the barcode label.



*For 6177R Series C Computers (750R and 1450R models)*

1. Locate the barcode label on the back of the computer.
2. Place the Rockwell Automation Windows 10 upgrade label over the barcode label.



750R Computer Shown

### Microsoft COA Label

*For 6181P Series F Computers*

1. Remove power from the computer.
2. Loosen the three captive screws that secure the back cover to the computer.



3. Open the cover and detach it from the chassis. The existing COA label is on the back panel of the chassis.

**IMPORTANT**

If an add-in card is installed, you might need to remove the card to access the COA label.

Add-in cards are sensitive to electrostatic discharge and require careful handling. See Appendix A of publication [6181P-UM004](#), Integrated Display Industrial Computers User Manual, for instructions to remove and reinstall an add-in card, which is available at [rok.auto/literature](http://rok.auto/literature).

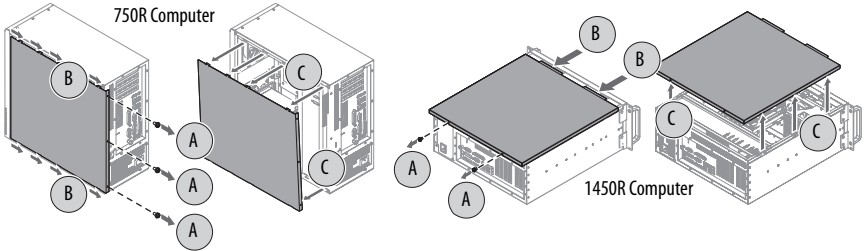
4. Place the new Windows COA label near (but not over) the existing COA label.



5. If necessary, reinstall the add-in card.
6. Reattach the rear cover to the computer chassis.
7. Close the cover.
8. Tighten the three captive screws to secure the rear cover.
9. Restore power to the computer.

*For 6177R Series C Computers (750R and 1450R models)*

1. Remove power from the computer.
2. Unfasten the cover from the computer chassis.
  - 750R computers: Remove the three screws on the rear edge of the side cover (A).
  - 1450R computers: Remove the two screws on the rear edge of the top cover (A).
3. Slide the cover back about 1.5 cm (0.5 in.) to release the hinge tabs (B).
4. Tilt the cover up slightly to disengage the hinge tabs from their lock slots.
5. Pull the cover away from the chassis (C).



6. Locate the existing COA label.
  - 750R computers: The label is underneath the top cover.
  - 1450R computers: The label is on a side cover.
7. Place the new COA label near (but not over) the existing COA label.



8. Reinstall the cover in the reverse order of steps 2 through 5.
9. Restore power to the computer.

## Download and Install the Windows 10 IoT Enterprise LTSC or LTSB OS

To access, download, and install the 10 IoT Enterprise OS, perform the following steps.

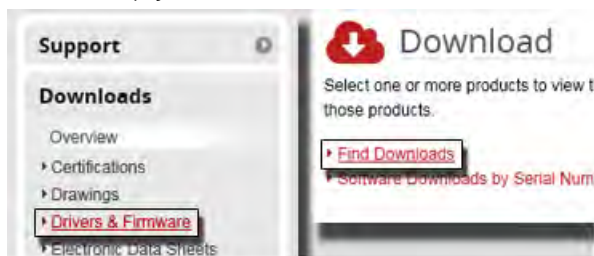
1. Attach the following external peripherals to your computer:
  - Display (for non-display models)
  - Keyboard and mouse
  - USB FAT32 storage drive (16 GB or larger)

---

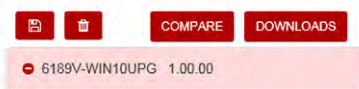
**IMPORTANT** The USB storage drive must be FAT32 formatted and must not contain any other files. Otherwise, any downloaded files placed on the USB drive will not be recognized.


---

2. Access the Rockwell Automation Product Compatibility and Download Center (PCDC) site: [rok.auto/pcdc](http://rok.auto/pcdc)
3. On the PCDC home page, use either of these links to search for downloads.



4. On the Find Downloads page, use 6189V-WIN10\* as your search criteria.
5. When 6189V-WIN10UPG is visible, click Downloads.



6. On the Downloads page, click  to see the available downloads.
7. Select the appropriate system image for your computer model. In nearly all instances, the AMI Rescue file should be selected. The available images are listed in the following three tables.

---

### 6189V-WIN10V2019UPG (for computers with Intel i3 or Intel i5 CPUs)

---

Image - 6177R Ser. C - 500GB - Windows 10 IoT 2019 LTSC 64-bit - AMI Rescue
Image - 6177R Ser. C - 500GB - Windows 10 IoT 2019 LTSC 64-bit - Ghost Format
Image - 6181P Ser. F Performance - 256GB - Windows 10 IoT 2019 LTSC 64-bit - AMI Rescue
Image - 6181P Ser. F Performance - 256GB - Windows 10 IoT 2019 LTSC 64-bit - Ghost Format
Image - 6181X Ser. H - 128GB - Windows 10 IoT 2019 LTSC 64-bit - AMI Rescue
Image - 6181X Ser. H - 128GB - Windows 10 IoT 2019 LTSC 64-bit - Ghost Format

---

### 6189V-WIN10H2019UPG (for computers with Intel i7 CPUs. Can also be used for Intel i3 and Intel i5 based computers.)

---

Image - 6181P Ser. F Advanced - 256GB - Windows 10 IoT 2019 LTSC 64-bit - AMI Rescue
Image - 6181P Ser. F Advanced - 256GB - Windows 10 IoT 2019 LTSC 64-bit - Ghost Format
Image - 6177R Ser. C - 500GB - Windows 10 IoT 2019 LTSC 64-bit - AMI Rescue
Image - 6177R Ser. C - 500GB - Windows 10 IoT 2019 LTSC 64-bit - Ghost Format
Image - 6181P Ser. F Performance - 256GB - Windows 10 IoT 2019 LTSC 64-bit - AMI Rescue
Image - 6181P Ser. F Performance - 256GB - Windows 10 IoT 2019 LTSC 64-bit - Ghost Format
Image - 6181X Ser. H - 128GB - Windows 10 IoT 2019 LTSC 64-bit - AMI Rescue
Image - 6181X Ser. H - 128GB - Windows 10 IoT 2019 LTSC 64-bit - Ghost Format

---

### 6189V-WIN10UPG (Windows 10 IoT Enterprise LTSB upgrade)

---

Image - 6177R Ser. C - 500GB - Windows 10 IoT 64-bit - AMI Rescue
Image - 6177R Ser. C - 500GB - Windows 10 IoT 64-bit - Ghost Format
Image - 6181P Ser. F Advanced - 100GB - Windows 10 IoT 64-bit - AMI Rescue
Image - 6181P Ser. F Advanced - 100GB - Windows 10 IoT 64-bit - Ghost Format
Image - 6181P Ser. F Advanced - 256GB - Windows 10 IoT 64-bit - AMI Rescue
Image - 6181P Ser. F Advanced - 256GB - Windows 10 IoT 64-bit - Ghost Format

---

6189V-WIN10UPG (Windows 10 IoT Enterprise LTSC upgrade) (Continued)
Image - 6181P Ser. F Advanced - 32GB - Windows 10 IoT 64-bit - AMI Rescue
Image - 6181P Ser. F Advanced - 32GB - Windows 10 IoT 64-bit - Ghost Format
Image - 6181P Ser. F Performance - 100GB - Windows 10 IoT 64-bit - AMI Rescue
Image - 6181P Ser. F Performance - 100GB - Windows 10 IoT 64-bit - Ghost Format
Image - 6181P Ser. F Performance - 256GB - Windows 10 IoT 64-bit - AMI Rescue
Image - 6181P Ser. F Performance - 256GB - Windows 10 IoT 64-bit - Ghost Format
Image - 6181P Ser. F Performance - 32GB - Windows 10 IoT 64-bit - AMI Rescue
Image - 6181P Ser. F Performance - 32GB - Windows 10 IoT 64-bit - Ghost Format

8. Click Downloads.
9. On the Download Cart dialog box, click Download Now.



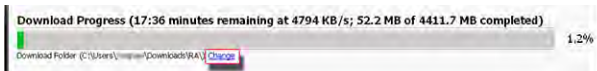
You must be registered with the Rockwell Automation PCDC website to download files. You must accept an End User License Agreement before files can be downloaded.

10. Download the system image to the root of the attached USB storage drive.

**IMPORTANT** If the system image files are not saved to the root of the USB storage drive, they will not be recognized by AMI Rescue.

There are two download methods available, Managed and Direct. If you do not have a third-party software, then use the Managed Download method.


11. **If you choose Managed Download:**
  - a. Save the .EXE file to your computer.
  - b. Double-click the .EXE file to start the download.
  - c. As the download starts, click Change.

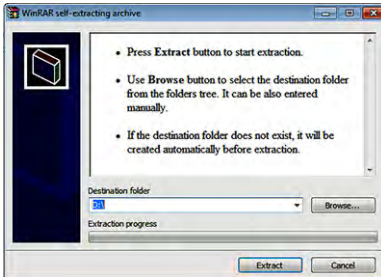


- d. Browse to and select the attached USB drive as your download location.

**If you choose Direct Download:**

- a. Download each file shown to the root of the attached USB drive.

12. After all files have downloaded, open the USB drive.
13. In the USB drive directory, double-click  to launch the extraction process.
14. On the extraction dialog box, perform the following:
  - a. Verify that the USB drive is the destination folder. If not, click Browse to locate it.
  - b. After the destination folder is confirmed, click Extract to complete the extraction.



15. If not already done, attach the USB storage drive to the computer that is being upgraded to Windows 10.
16. With the USB storage drive attached, restart the computer.
17. During the computer power-on self test (POST), press F2 to access the UEFI/BIOS set-up utility.



Use the arrow keys on a keyboard to navigate between the UEFI/BIOS menus and menu selections.

18. Depending on your computer model, perform the following steps in the next sections to restore an OS image from a USB storage drive.

### For 6181P Series F Computers

1. Click the AMI Rescue menu to access the AMI Restore screen.
2. Click Restore from an Image.

---

**IMPORTANT** When you upgrade to a new OS image, all data on the target drive is replaced. Verify that all data is backed up before you proceed with the following steps.

---

3. In the Source of Image File field, click Browse to locate the image source.



4. From the List of Volumes menu, select the USB storage drive.





---

**IMPORTANT** Do not select Recovery; it is the OS image on the computer that you wish to restore.

---

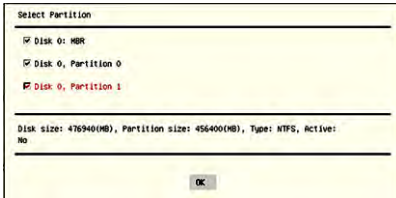
5. Click Exit.
6. In the Destination of Restore Data field, click Browse to locate the destination source.



7. Select the volume label for the Windows 10 upgrade that you want to restore.



8. Click Advanced.
9. On the Select Partition screen, select all boxes for Disk 0 so the entire OS image is restored.



10. Click OK.
11. Click Exit.
12. Click Restore Now to start the restoration process.

---

**IMPORTANT** If warning messages appear during the restoration process, answer Yes to all except if you want to keep the current partition table; answer No to that message.

---

*For 6177R Series C Computers (750R and 1450R models)*

1. Click the AMI Rescue menu to access the AMI Restore screen.



2. Click AMI Restore.

---

**IMPORTANT** When you upgrade to a new OS image, all data on the target drive is replaced. Verify that all data is backed up before you proceed with the following steps.

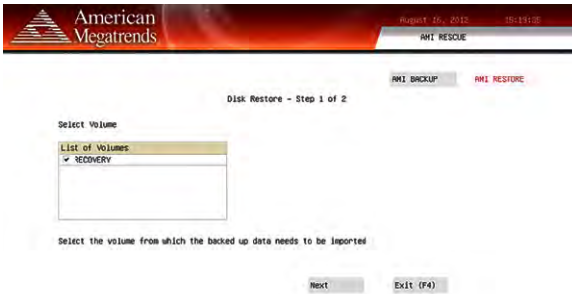
---

3. Select the appropriate volume from the list.  
'Recovery' is the volume name where the default backup of factory images is stored.

---

**IMPORTANT** Computers with the Windows Embedded 8.1 Industry Pro operating system do not contain a factory image backup in the Recovery partition.

---



4. Click Next.
5. Select the volume label for the Windows 10 upgrade that you want to restore.



6. Click Advanced.
7. Select to which disk partition you want to restore.



All checkboxes must be selected for a complete restore of factory OS images.

8. Click OK.
9. Click Restore to start the restoration process.

---

**IMPORTANT** Three alert windows appear during the restoration process. Answer Yes to all except if you want to keep the current partition table; answer No to that alert.

---

The restoration process starts.

## Additional Resources

These documents contain more information to related products from Rockwell Automation.

Resource	Description
Rockwell Automation PCDC Quick Reference Guide, publication <a href="#">PCDC-QR001</a>	Provides an overview of the Rockwell Automation PCDC site, and how to access downloads for your computer model.
Non-display Industrial Computers User Manual, publication <a href="#">6177R-UM002</a>	Provides details on how to install, configure, and operate the 6177R non-display industrial computers.
Integrated Display Industrial Computers User Manual, publication <a href="#">6181P-UM004</a>	Provides details on how to install, configure, and operate the 6181P integrated display industrial computers.

You can view or download publications at [rok.auto/literature](http://rok.auto/literature).

# Rockwell Automation Support

Use these resources to access support information.

<b>Technical Support Center</b>	Find help with how-to videos, FAQs, chat, user forums, and product notification updates.	<a href="http://rok.auto/support">rok.auto/support</a>
<b>Knowledgebase</b>	Access Knowledgebase articles.	<a href="http://rok.auto/knowledgebase">rok.auto/knowledgebase</a>
<b>Local Technical Support Phone Numbers</b>	Locate the telephone number for your country.	<a href="http://rok.auto/phonesupport">rok.auto/phonesupport</a>
<b>Literature Library</b>	Find installation instructions, manuals, brochures, and technical data publications.	<a href="http://rok.auto/literature">rok.auto/literature</a>
<b>Product Compatibility and Download Center (PCDC)</b>	Download firmware, associated files (such as AOP, EDS, and DTM), and access product release notes.	<a href="http://rok.auto/pcdc">rok.auto/pcdc</a>

## Documentation Feedback

Your comments help us serve your documentation needs better. If you have any suggestions on how to improve our content, complete the form at [rok.auto/docfeedback](http://rok.auto/docfeedback).

## Waste Electrical and Electronic Equipment (WEEE)





At the end of life, this equipment should be collected separately from any unsorted municipal waste.

Rockwell Automation maintains current product environmental compliance information on its website at [rok.auto/pec](http://rok.auto/pec).

Your comments help us serve your documentation needs better. If you have any suggestions on how to improve our content, complete the form at [rok.auto/docfeedback](http://rok.auto/docfeedback).

For technical support, visit [rok.auto/support](http://rok.auto/support).

Rockwell Otomasyon Ticaret A.Ş. Kar Plaza İş Merkezi E Blok Kat:6 34752, İçerenköy, İstanbul, Tel: +90 (216) 5698400 EEE  
Yönetmeliğine Uygundur

Connect with us.    

[rockwellautomation.com](http://rockwellautomation.com)

expanding human possibility

AMERICAS: Rockwell Automation, 1201 South Second Street, Milwaukee, WI 53204-2496 USA, Tel: (1) 414.382.2000, Fax: (1) 414.382.4444  
EUROPE/MIDDLE EAST/AFRICA: Rockwell Automation NV, Pegasus Park, De Kleetlaan 12a, 1831 Diegem, Belgium, Tel: (32) 2 663 0600, Fax: (32) 2 663 0640  
ASIA PACIFIC: Rockwell Automation, Level 14, Core F, Cyberport 3, 100 Cyberport Road, Hong Kong, Tel: (852) 2887 4788, Fax: (852) 2508 1846

Allen-Bradley, expanding human possibility, FactoryTalk, and Rockwell Automation are trademarks of Rockwell Automation, Inc.  
Trademarks not belonging to Rockwell Automation are property of their respective companies.



PN-623559

Publication IC-IN001B-EN-P - April 2021 | Supersedes Publication IC-IN001A-EN-P - July 2017

Copyright © 2021 Rockwell Automation, Inc. All rights reserved. Printed in the U.S.A.

PN-623559

DIR 10006033136-00