

## PowerFlex® 750-Series Roll-Out Cart

---



**ATTENTION:** Because drive installations can vary, the PowerFlex 750-Series Roll-out Cart may require adjustment prior to use. Refer to the PowerFlex 750-Series AC Drive Installation Instructions, publication 750-IN001 for detailed setup information. Familiarize yourself with all hazards associated with using the Roll-out Cart before attempting to remove the drive from the cabinet.

**ATTENTION:** The Roll-out Cart is used with a drive that has a high center of gravity and a tip over hazard exists. To guard against death, serious personal injury, and/or equipment damage, do not subject the drive to high rates of acceleration or deceleration while transporting. Do not push or pull above the points indicated on the drive.

**ATTENTION:** To avoid an electric shock hazard, verify that the voltage on the bus capacitors has discharged completely before servicing. After removing power to the drive, wait 5 minutes for the bus capacitors to discharge. Measure the DC bus voltage at the DC+ and DC- TESTPOINT sockets on the front of the power module. The voltage must be zero.

**ATTENTION:** HOT surfaces can cause severe burns. After disconnecting power allow time for cooling.

**ATTENTION:** This drive contains ESD (Electrostatic Discharge) sensitive parts and assemblies. Static control precautions are required when installing, testing, servicing or repairing this assembly. Component damage may result if ESD control procedures are not followed. If you are not familiar with static control procedures, reference Guarding Against Electrostatic Damage, publication 8000-4.5.2 or any other applicable ESD protection handbook.

**ATTENTION:** Hazard of permanent eye damage exists when using optical transmission equipment. This product emits intense light and invisible radiation. Do not look into module ports or fiber optic cable connectors.

---

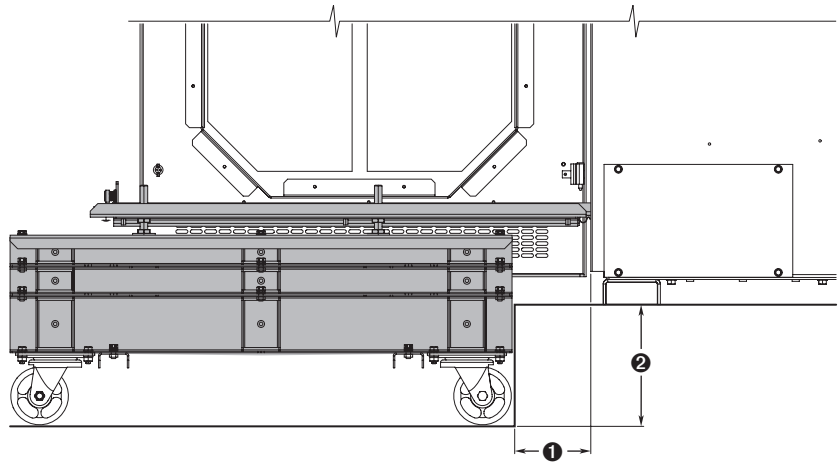
- IMPORTANT** Take precautions when using the Roll-out Cart to move the drive.
- Only use the Roll-out Cart to move the drive a short distance in order to gain access to the cabinet interior.
  - Do not attempt to move the drive on the Roll-out Cart with the handle alone. The Roll-out Cart handle is designed for positioning the empty cart.
  - Only use the cart on a smooth and level surface.
  - Ensure the path for the cart is clear of debris and obstacles.
  - Avoid sloped and rough surfaces.
  - Always move the drive slowly.
- 

### Finding Specific Information

For detailed information on using the Roll-out Cart with the drive refer to the PowerFlex 750-Series Installation Instructions, publication 750-IN001 available online at: [www.rockwellautomation.com/literature](http://www.rockwellautomation.com/literature)

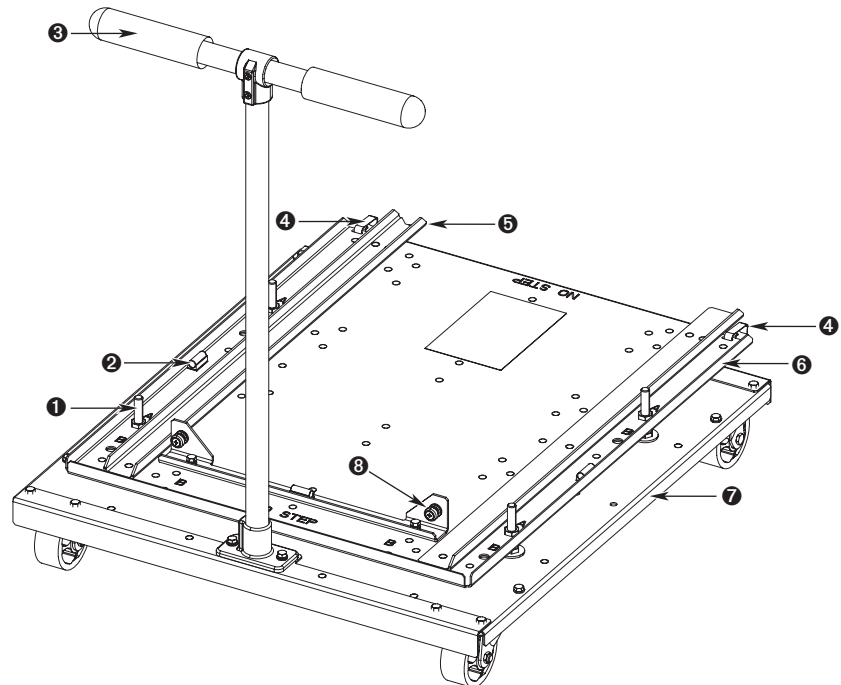
## Prepare the Roll-out Cart

The 20-750-CART1-F8 Roll-out Cart is required to remove the Frame 8 drive from the cabinet. It can be adjusted for reach and height.



No.	Description
①	Adjustment for Curb Offset/Reach: 0...114 mm (0...4.5 in.)
②	Adjustable Curb Height: 0...182 mm (0...7.2 in.)

**Figure 1 - Roll-out Cart Features**



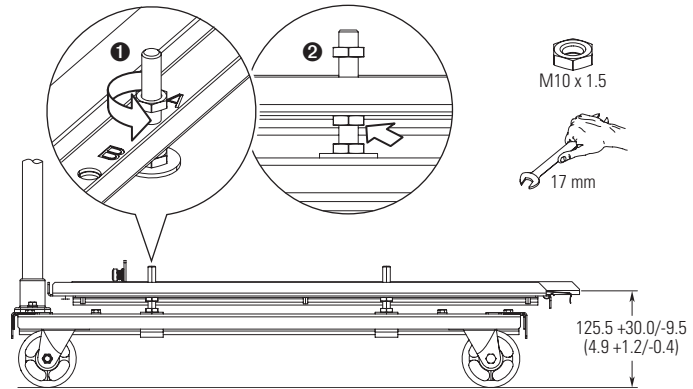
No.	Description
①	Threaded studs and nuts allow precision height and leveling adjustments (four positions)
②	Bubble levels help with fine adjustment of the cart deck (three positions)
③	Handle
④	Retaining clips positively engage the cart with the drive cabinet (two positions)
⑤	Alignment track keeps the drive in the correct position
⑥	Cart deck
⑦	Cart chassis
⑧	Drive stop and capture screws
⑨	Hardware for assembling I-beam spacers (not shown)

## Adjust Roll-Out Cart Height Using Threaded Studs and Nuts

The height of the Roll-out Cart deck can be adjusted using the threaded leveling studs and nuts.

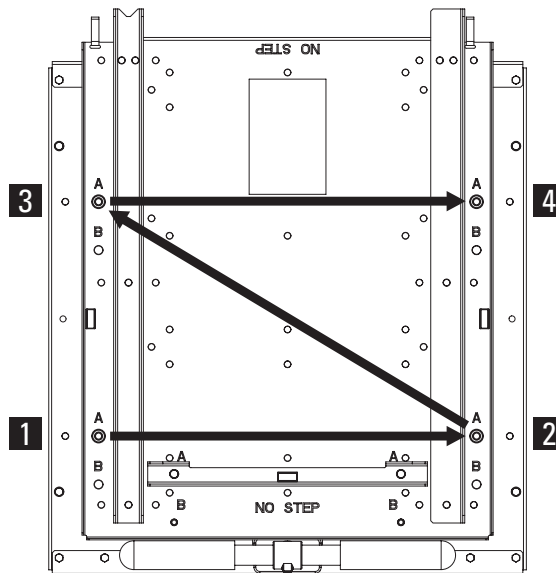
- Maximum height = 155.5 mm (6.1 in.)
- Minimum height = 116 mm (4.6 in.)
- Adjustment range = 30 mm (1.2 in.) up, 9.5 mm (0.4 in.) down from the factory setting of 125.5 mm (4.9 in.)

1. Loosen and back off the top nuts on the four threaded leveling studs ❶.



2. Turn the bottom supporting nuts to raise or lower the cart deck ❷. Right hand nut rotation lowers the deck. Left hand rotation raises the deck.

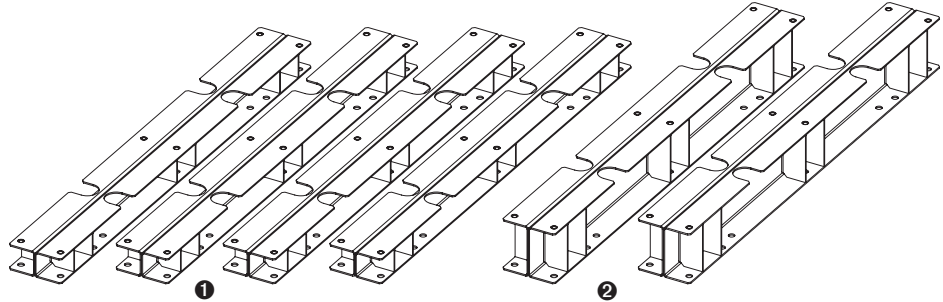
Make uniform half-turn adjustments to each of the four threaded studs in an alternating pattern to help prevent binding and maintain a level orientation.



3. At the desired height, ensure the deck is level using the three bubble levels.
4. Tighten the top nuts.

## Adjust Roll-Out Cart Height Using Spacers

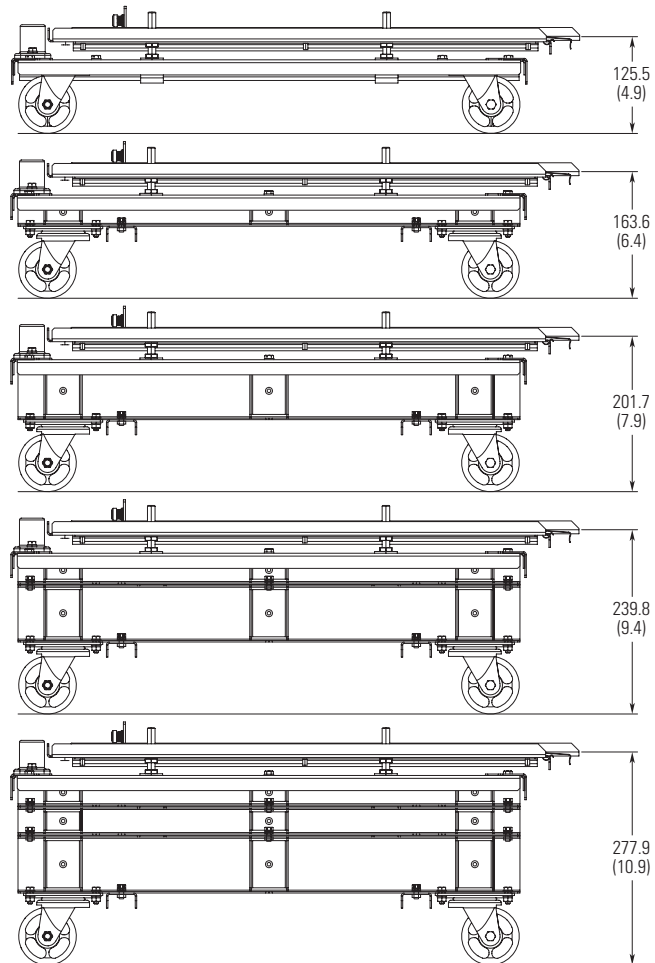
The height of the Roll-out Cart deck can be adjusted using the I-beam spacers provided.



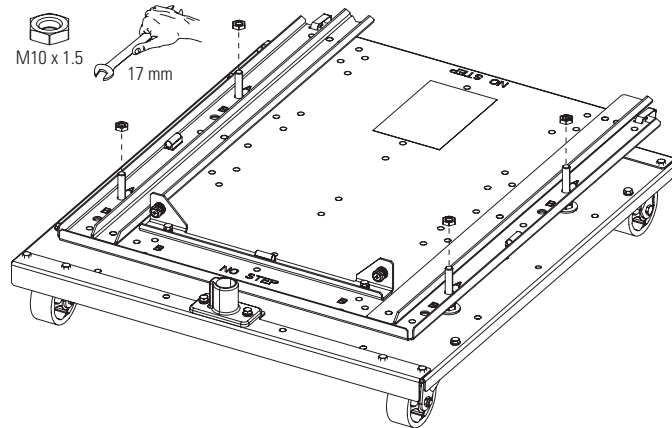
No.	Description
①	Four 38.1 mm (1.5 in.) spacers
②	Two 76.2 mm (3.0 in.) spacers

### Spacer Height Combinations

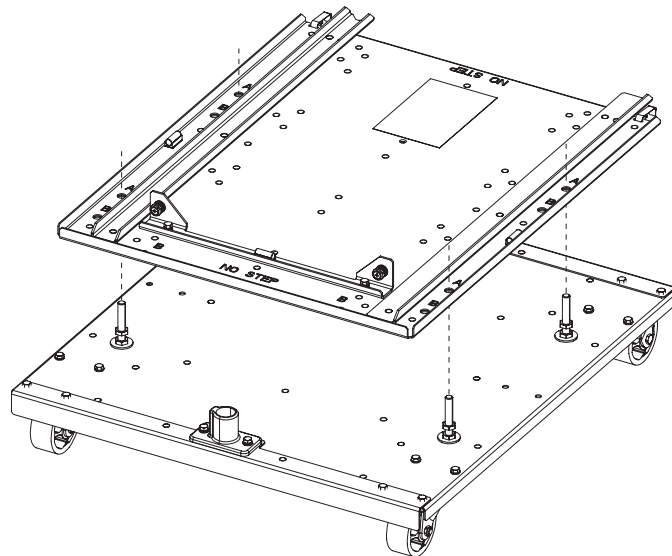
Each of the base heights below have adjustment range of +30.0 mm (1.2 in.) and -9.5 mm (0.4 in.).



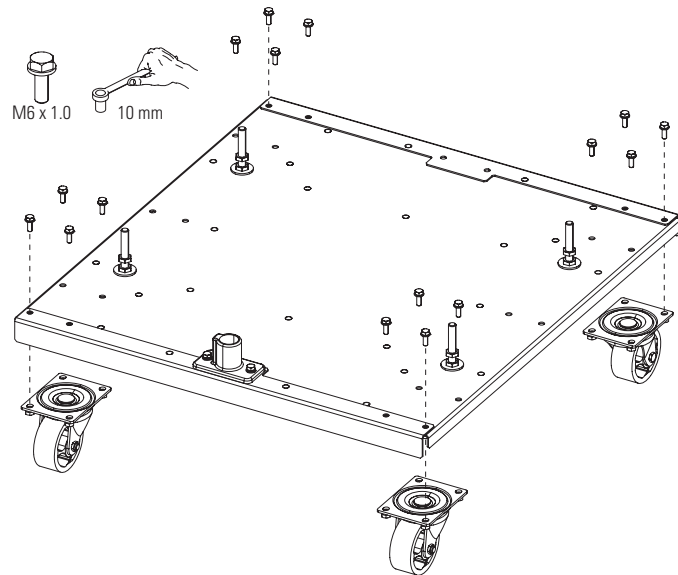
1. Remove the Roll-out Cart deck by removing the top nuts of the four threaded leveling studs.



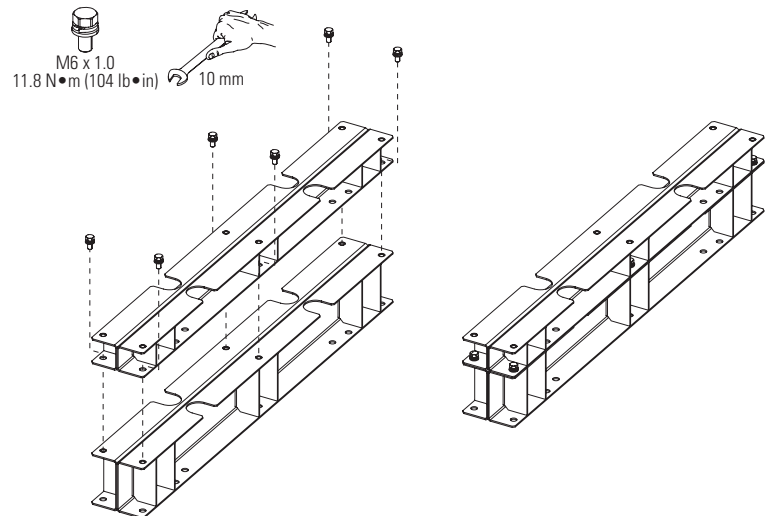
2. Lift the deck off of the four threaded leveling studs.



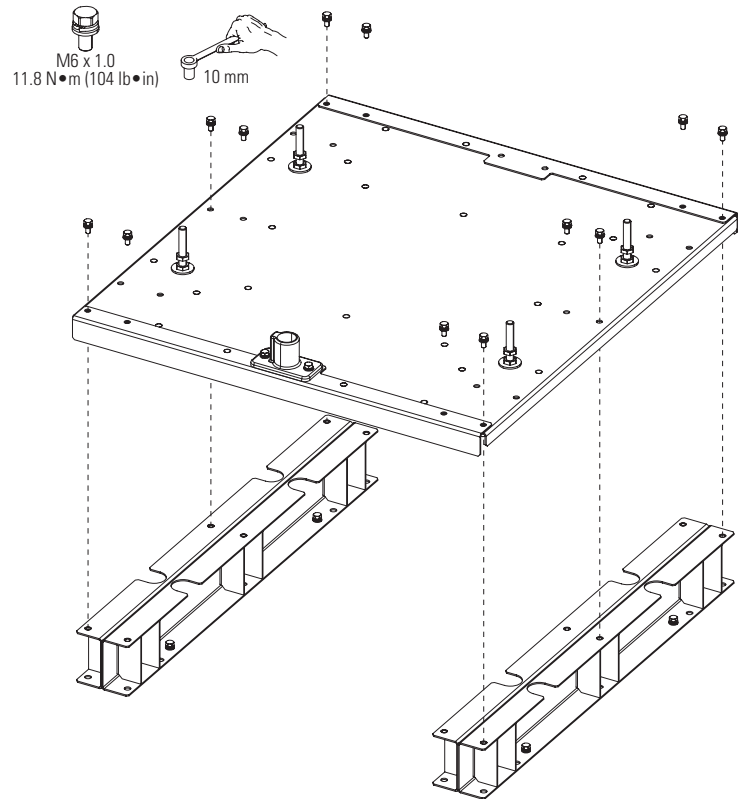
3. Remove the bolts securing the casters to chassis.



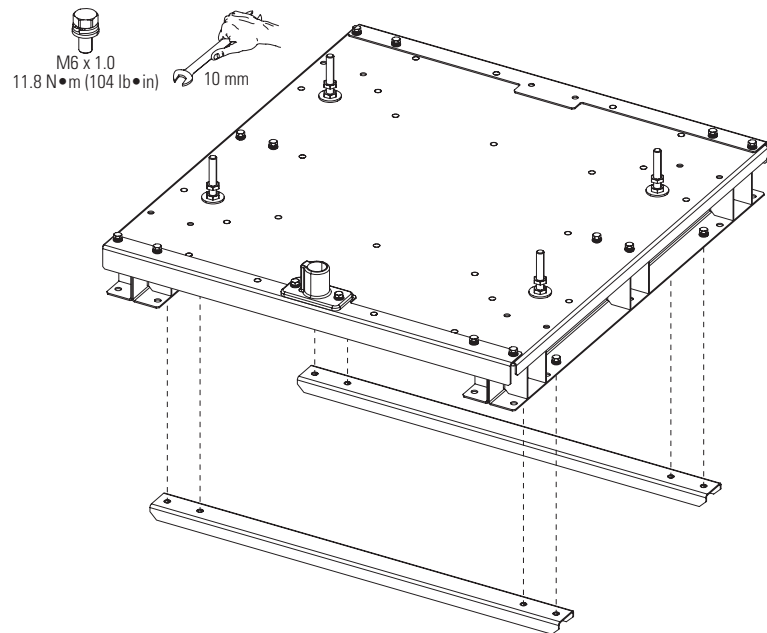
4. Select the spacer or spacers required. Combine spacers using bolts provided as needed.



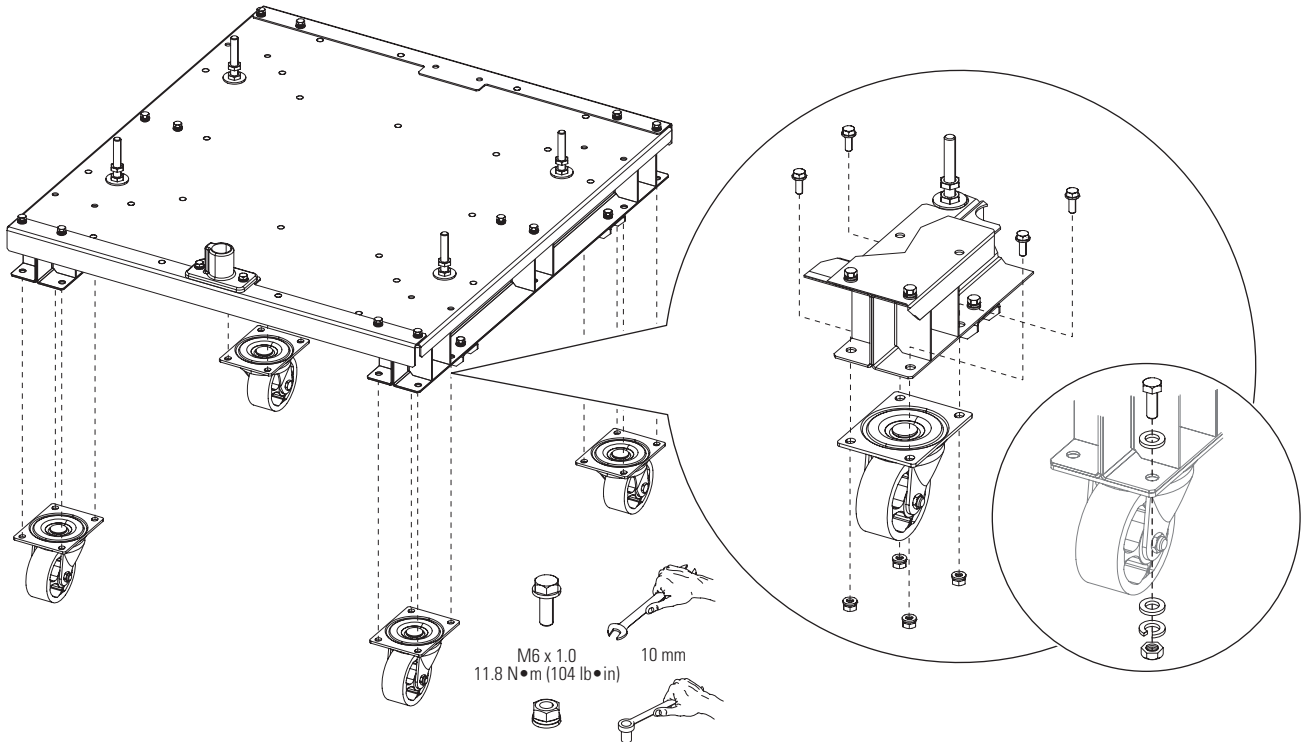
5. Bolt the spacer or spacer assembly to the bottom of the cart chassis.



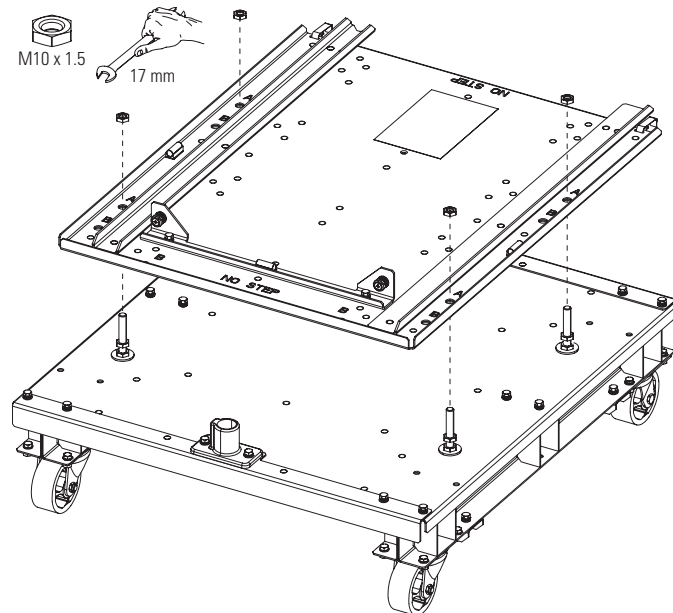
6. Bolt the cross beams to the bottom of the spacers.



7. Bolt the casters to the bottom spacer.



8. Determine reach required and install the deck in Position A or Position B  
See next section for details.





## Adjust Roll-Out Cart Reach

Figure 2 - Reach Position A

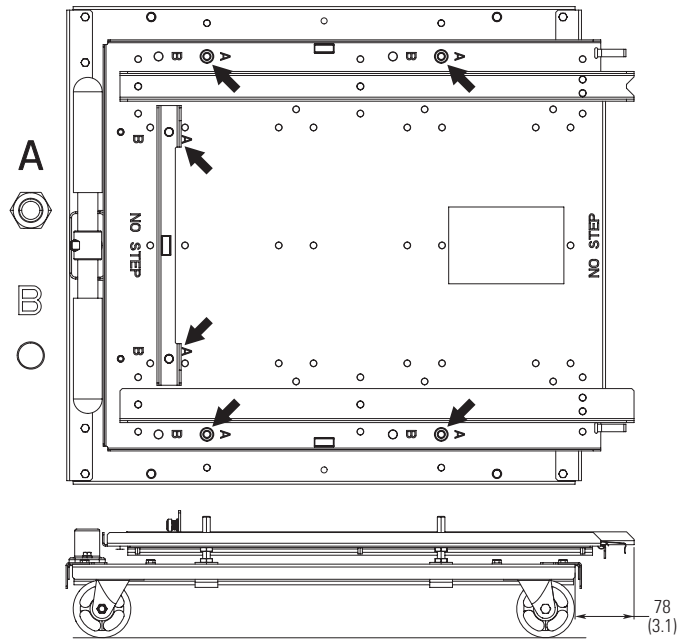
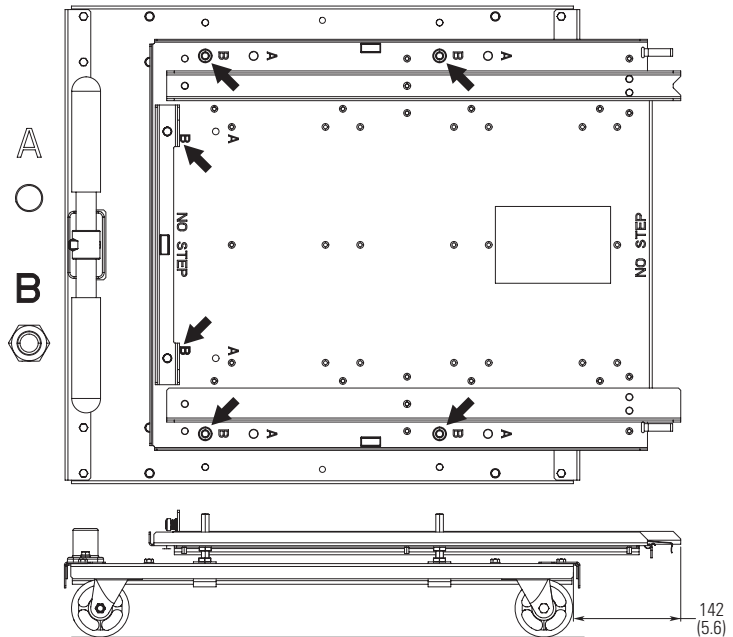


Figure 3 - Reach Position B



**ATTENTION:** A tip over hazard exists. To guard against death, serious personal injury, and/or equipment damage, ensure the Drive Stop is in the same position as the corresponding threaded leveling studs. The weight of the drive must be evenly distributed over the cart wheels.

# Rockwell Automation Support

Before you contact Rockwell Automation for technical assistance, we suggest you please review the troubleshooting information contained in the supporting product publications first (e.g. Hardware Service Manual, Installation Instructions, Programming Manual, etc.).

If the difficulty persists, call your local distributor or contact Rockwell Automation in one of the following ways:

<b>Phone</b>	United States/Canada	1.262.512.8176 (7 AM - 6 PM CST) 1.440.646.5800 (24 hour paid support available through the TechConnect Support Program)
	Outside United States/Canada	You can access the phone number for your country via the Internet: Go to <a href="http://www.ab.com">http://www.ab.com</a> Click on <i>Support</i> ( <a href="http://support.rockwellautomation.com/">http://support.rockwellautomation.com/</a> ) Under <i>Contact Customer Support</i> , click on <i>Phone Support</i>
<b>Internet</b>	Go to <a href="http://www.ab.com/support/abdrives/">http://www.ab.com/support/abdrives/</a>	
<b>E-mail</b>	<a href="mailto:support@drives.ra.rockwell.com">support@drives.ra.rockwell.com</a>	

Be prepared to furnish the following information when you contact support:

- Product Catalog Number
- Product Serial Number
- Firmware Revision Level

[www.rockwellautomation.com](http://www.rockwellautomation.com)



PN-80076

## Power, Control and Information Solutions Headquarters

Americas: Rockwell Automation, 1201 South Second Street, Milwaukee, WI 53204 USA, Tel: (1) 414.382.2000, Fax: (1) 414.382.4444

Europe/Middle East/Africa: Rockwell Automation, Vorstlaan/Boulevard du Souverain 36, 1170 Brussels, Belgium, Tel: (32) 2 663 0600, Fax: (32) 2 663 0640

Asia Pacific: Rockwell Automation, Level 14, Core F, Cyberport 3, 100 Cyberport Road, Hong Kong, Tel: (852) 2887 4788, Fax: (852) 2508 1846

Publication 750-IN014A-EN-P - August 2010