



Dismantle 6176M Standard Industrial Monitors for Recycling and Recovery

Catalog Numbers 6176M-15VN, 6176M-15VT, 6176M-15PN, 6176M-15PT, 6176M-17VN, 6176M-17VT, 6176M-17PN, 6176M-17PT, 6176M-19VN, 6176M-19VT, 6176M-19PN, 6176M-19PT

Topic	Page
About this Publication	1
Important User Information	1
Required Tools	1
Dismantle a Panel-mounted Monitor	2
Dismantle a VESA-Mounted Monitor	4
Additional Resources	6

About this Publication

This document describes how to dismantle your monitor for recycling or disposal in accordance with the European Union Ecodesign Directive. Monitors are VESA mount ready and can be installed in a panel or rack. This document describes how to dismantle each type or installation. This document does not provide information on monitor configuration or setup.

Important User Information

Throughout this manual, when necessary, we use notes to make you aware of safety considerations.



WARNING: Identifies information about practices or circumstances that can cause an explosion in a hazardous environment, which may lead to personal injury or death, property damage, or economic loss.



ATTENTION: Identifies information about practices or circumstances that can lead to personal injury or death, property damage, or economic loss. Attentions help you identify a hazard, avoid a hazard, and recognize the consequences.



SHOCK HAZARD: Labels may be on or inside the equipment, for example, a drive or motor, to alert people that dangerous voltage may be present.



BURN HAZARD: Labels may be on or inside the equipment, for example, a drive or motor, to alert people that surfaces may reach dangerous temperatures.

IMPORTANT Identifies information that is critical for successful application and understanding of the product.

Required Tools

These tools can be used to dismantle the monitor:

- #2 Phillips torque screwdriver
- 5.0 mm hex driver for VGA and DVI connector
- 11 mm hex driver for DC Jack

Dismantle a Panel-mounted Monitor

To dismantle a panel-mounted monitor, perform the following steps:

1. Remove the ten screws on the back of the panel as indicated in the following figure and remove the back panel.



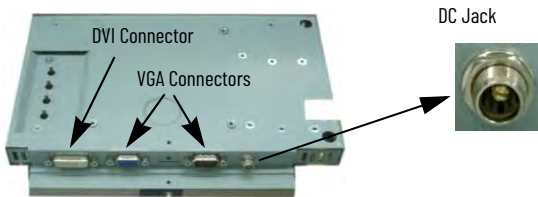
2. Remove the touch-panel flexible printed cable (FPC) from the touch-panel controller board.



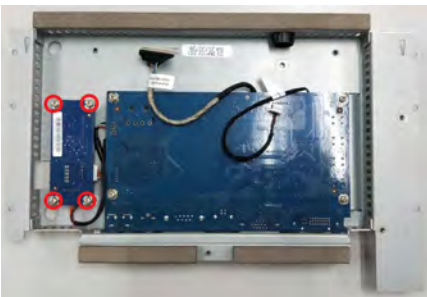
3. Remove the screws and low-voltage differential signaling (LVDS) connector, and the light-emitting diode (LED) back light cable.
4. Remove the scaler module from the Liquid Crystal Module (LCM).



5. Use a hex key and a hex wrench to remove the hex screws and screw nuts from the VGA, DVI, and DC jacks.



6. Remove the circled screws and disconnect the DVI cable to remove the touch-panel controller board from the scaler module.



7. Remove the four screws circled in the following figure and remove the scaler board from the scaler module.



8. Remove the four screws circled in the following figure.



- 9. Remove the LCD and its two brackets from the LCM module.
- 10. Remove the screws from the touch-panel bracket and take the touch-panel bracket off the LCM module.

IMPORTANT Loosen the screws in the order that is shown to help prevent unbalanced pressure from causing damage to the glass or touch panel. Once loosened they can be removed. They were installed with 0.6 N•m (5.31 lb•in) of torque.

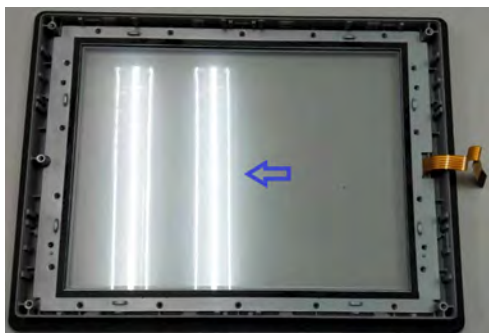


15" Model



19" and 20" Models

11. Working from front to back, push and remove the touch panel from the front bezel.



12. Remove the last four screws and remove the left and right LCD brackets (circled) from the LCD.

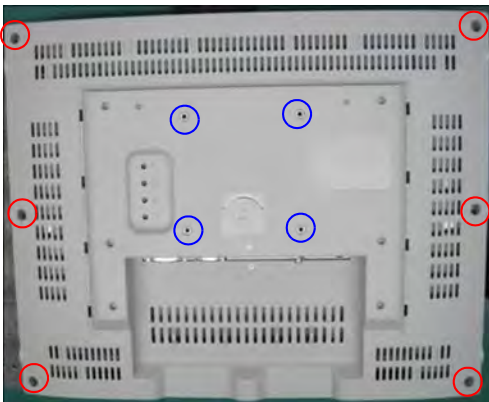


13. Recycle or reuse the separated parts as appropriate for your location.

Dismantle a VESA-Mounted Monitor

To dismantle a VESA-mounted monitor, perform the following steps:

1. Remove the four screws circled in blue on the back of the panel as indicated in the following figure. Then remove the screws circled in red and remove the back cover from the system.



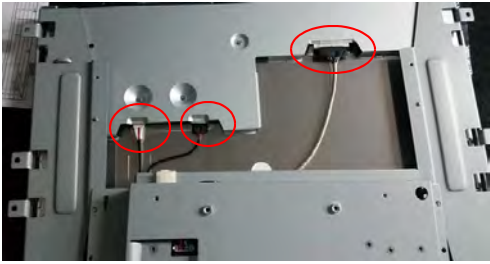
2. Remove the touch-panel FPC from the touch-panel controller board.



3. Remove the four screws circled in the following figure from the LCM module.



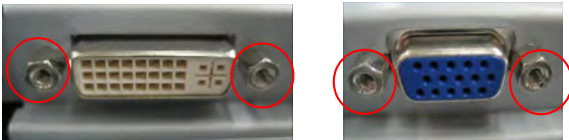
4. Remove the scaler module from the LCM module. Remove the LVDS cable and the LCD BL cable from the LCD.



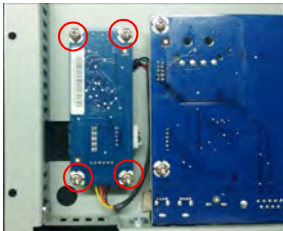
5. Use a hex wrench to remove the hex screw nut from the DC jack.



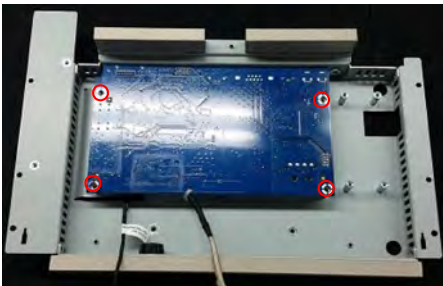
6. Use a hex key to remove the hex screws from the VGA and DVI-I connectors.



7. Remove the four screws circled and disassemble the touch-panel controller board from the scaler module.



8. Remove the four circled screws and remove the scaler board from the scaler module.



9. Remove the four circled screws and remove the left and right touch-panel brackets.



10. Remove the touch panel from the LCM module.

11. Remove these four screws and remove the LCD from the LCM module.



12. Recycle or reuse the separated parts as appropriate for your location.

Additional Resources

These documents contain additional information concerning related products from Rockwell Automation.

Resource	Description
Standard Industrial Monitors User Manual, publication 6176M-UM001	Provides information on how to install, configure, and troubleshoot 6176M industrial monitors.
Industrial Standard Monitors Installation Instructions, publication 6176M-IN001	Provides information on how to install monitor and make connections.
Product Certifications website, rok.auto/certifications .	Provides declarations of conformity, certificates, and other certification details.

You can view or download publications at rok.auto/literature.

Notes:

Rockwell Automation Support

Use these resources to access support information.

Technical Support Center	Find help with how-to videos, FAQs, chat, user forums, and product notification updates.	rok.auto/support
Knowledgebase	Access Knowledgebase articles.	rok.auto/knowledgebase
Local Technical Support Phone Numbers	Locate the telephone number for your country.	rok.auto/phonesupport
Literature Library	Find installation instructions, manuals, brochures, and technical data publications.	rok.auto/literature
Product Compatibility and Download Center (PCDC)	Download firmware, associated files (such as AOP, EDS, and DTM), and access product release notes.	rok.auto/pcdc

Documentation Feedback

Your comments help us serve your documentation needs better. If you have any suggestions on how to improve our content, complete the form at rok.auto/docfeedback.

Waste Electrical and Electronic Equipment (WEEE)







At the end of life, this equipment should be collected separately from any unsorted municipal waste.

Rockwell Automation maintains current product environmental compliance information on its website at rok.auto/pec.

Your comments help us serve your documentation needs better. If you have any suggestions on how to improve our content, complete the form at rok.auto/docfeedback.

For technical support, visit rok.auto/support.

Rockwell Otomasyon Ticaret A.Ş. Kar Plaza İş Merkezi E Blok Kat:6 34752 Çerenköy, İstanbul, Tel: +90 (216) 5698400 EEE Yönetmeliğine Uygundur

Connect with us.    

rockwellautomation.com — expanding human possibility™

AMERICAS: Rockwell Automation, 1201 South Second Street, Milwaukee, WI 53204-2496 USA, Tel: (1) 414.382.2000, Fax: (1) 414.382.4444

EUROPE/MIDDLE EAST/AFRICA: Rockwell Automation NV, Pegasus Park, De Kleetlaan 12a, 1831 Diegem, Belgium, Tel: (32) 2 663 0600, Fax: (32) 2 663 0640

ASIA PACIFIC: Rockwell Automation, Level 14, Core F, Cyberport 3, 100 Cyberport Road, Hong Kong, Tel: (852) 2887 4788, Fax: (852) 2508 1846

Allen-Bradley, expanding human possibility, FactoryTalk, and Rockwell Automation are trademarks of Rockwell Automation, Inc. Trademarks not belonging to Rockwell Automation are property of their respective companies.

Publication 6176M-IN003A-EN-P - March 2021

Copyright © 2021 Rockwell Automation, Inc. All rights reserved. Printed in the U.S.A.