

Load Switch

(Cat. No. 194E)



Attention: To prevent electrical shock, disconnect from power source before installing or servicing. To be commissioned and maintained only by qualified personnel; pay attention to the operating instructions!

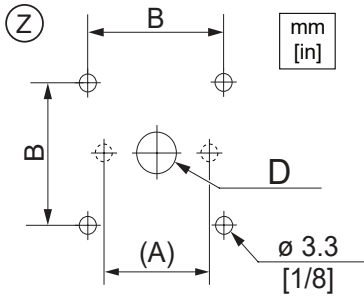


Achtung: Vor Installations- oder Servicearbeiten Stromversorgung unterbrechen, um Unfälle zu vermeiden. Inbetriebsetzung und Wartung nur durch Fachpersonal; Betriebsanleitung beachten!

Attention: Avant le montage et la mise en service, couper l'alimentation secteur afin d'éviter tout accident. Mise en service et entretien: seulement par du personnel spécialisé; respecter les instructions d'exploitation!

Attenzione: Per prevenire infortuni, togliere tensione prima dell'installazione o manutenzione. Messa in servizio e manutenzione solo da personale specializzato; attenersi alle istruzioni per l'esercizio!

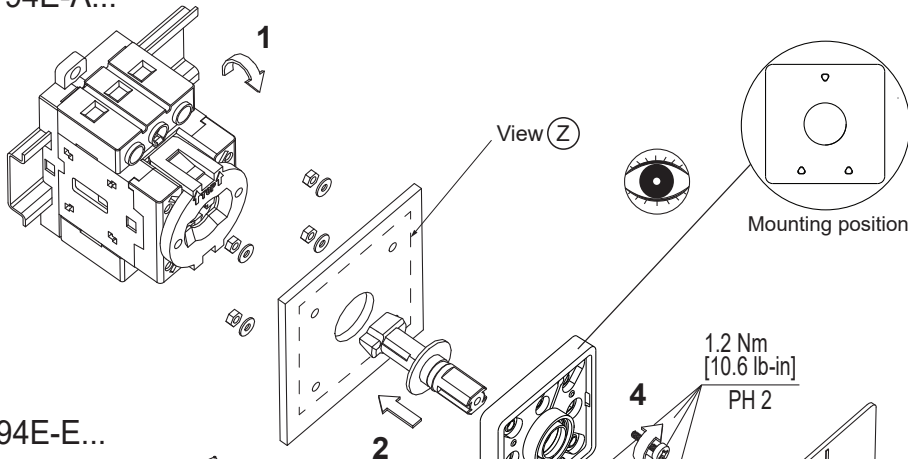
Atención: Desconectar la alimentación eléctrica antes de realizar el montaje y la puesta en servicio, con el objeto de evitar accidentes. Puesta en servicio y mantenimiento exclusivamente por personal especializado; respetar las instrucciones de puesta en servicio y mantenimiento!



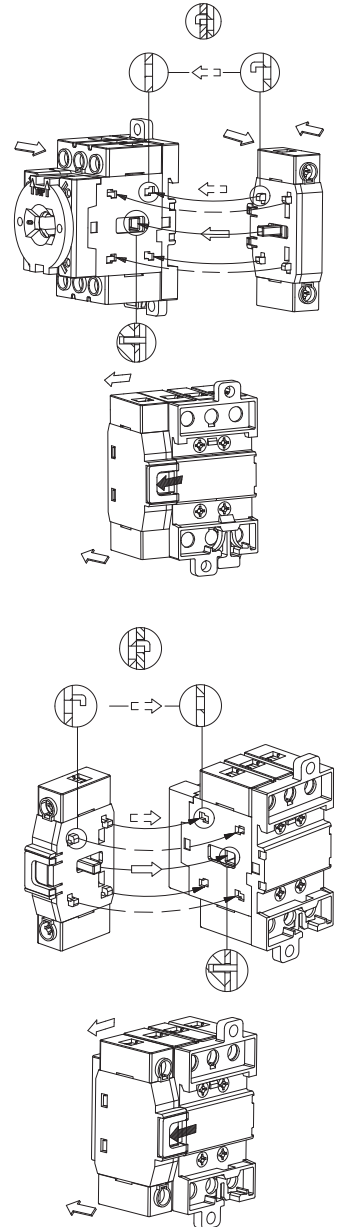
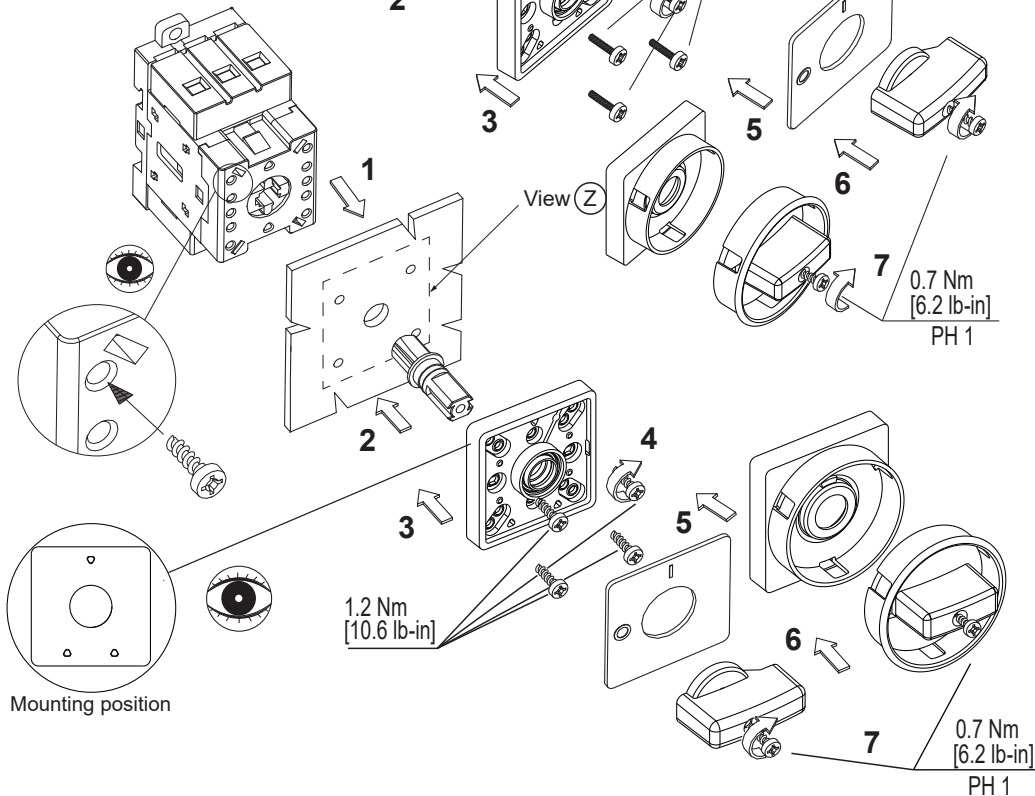
194E-A			
Load Size [A]	A (only for 2-holes mounting)	B (only for 4-holes mounting)	D
16		28 [1-7/64]	17 [43/64]
25		36	
32		[1-27/64]	
40		36 or 48	
63		[1-27/64] or [1-57/64]	
80		36 or 48	
100		[1-27/64] or [1-57/64]	

194E-E			
Load Size [A]	A (only for 2-holes mounting)	B (only for 4-holes mounting)	D
16	28 [1-7/64]	28 [1-7/64]	9.5 [3/8]
25	32	36	
32	[1-17/64]	[1-27/64]	
40	32	36 or 48	
63	[1-17/64]	[1-27/64] or [1-57/64]	
80	32	36 or 48	
100	[1-17/64]	[1-27/64] or [1-57/64]	

194E-A...

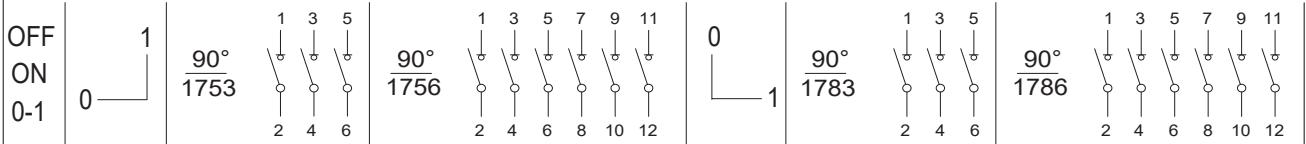


194E-E...

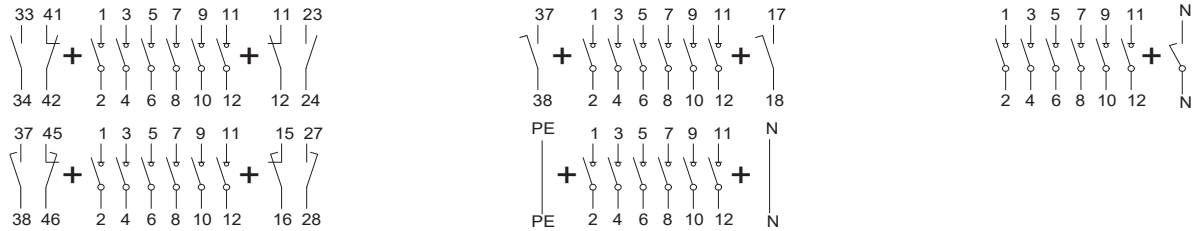


TYPE	AC12A	IEC/EN 60947-3	AC23A			GENERAL USE	USA/CND					FUSE (A) **	WIRE GAUGE*		TORQUE* / SLOT	
							MOTOR STARTING						60/75°C Cu WIRE ONLY			
194E-16	690V 16A	Ui 690V	V~	230	400	690	600 Vac 16A	V~	120	240	480	600	25	RIGID WIRE	FINE STRANDS	12.2lb-in 1.4Nm / PZZ
			kW	5.5	7.5	7.5		Hp	1	2	3	5		10	1ph	
Suitable as motor disconnect												AUX. CONTACTS	RIGID WIRE	FINE STRANDS	TORQUE / SLOT	
* Values applicable also for forth pole, neutral terminal and ground terminal												WIRE GAUGE	18...14 AWG	18...14 AWG	8.8lb-in (1Nm) / PZ1	
** These devices are suitable for use on a circuit of delivering not more than 5000 rms symmetrical amperes, 600V ac max. when protected by class K5 fuses.												60/75°C Cu WIRE ONLY	0.75...2.5 mm²	0.5...2.5 mm²		

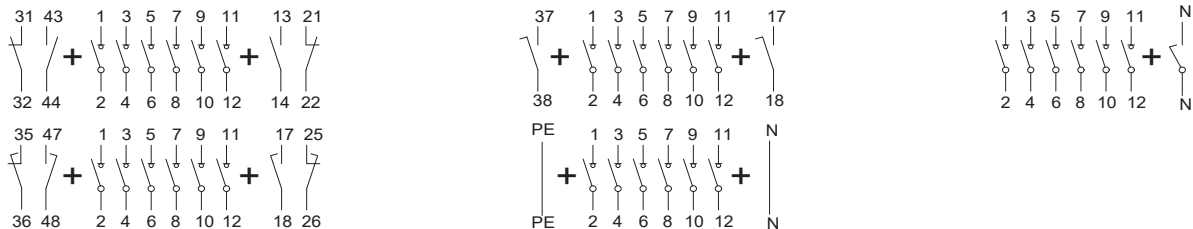
ANSCHLUSSPLAN - WIRING DIAGRAMNS - SCHEMA DE CONNEXION - SCHEMI DI COLLEGAMENTO



194E-E... MIT ZUBEHÖR - WITH ACCESSORIES - AVEC ACCESSOIRES - CON ACCESSORI



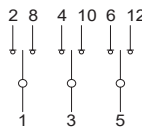
194E-A... MIT ZUBEHÖR - WITH ACCESSORIES - AVEC ACCESSOIRES - CON ACCESSORI



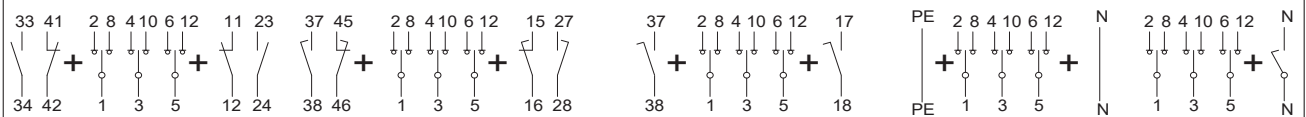
Changeover
with 0

1-0-2

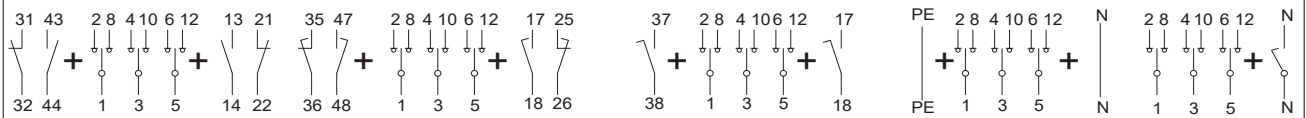
90°
3753



194E-E... MIT ZUBEHÖR - WITH ACCESSORIES - AVEC ACCESSOIRES - CON ACCESSORI



194E-A... MIT ZUBEHÖR - WITH ACCESSORIES - AVEC ACCESSOIRES - CON ACCESSORI







For Technical Support, visit ROK.AUTO/SUPPORT.

Rockwell Automation maintains current product environmental compliance information on its website at rok.auto/pec.

Rockwell Otomasyon Ticaret A.Ş. Kar Plaza İş Merkezi E Blok Kat:6 34752 İçerenköy, İstanbul, Tel: +90 (216) 5698400

EEE Yönetmeliğine Uygundur

Connect with us.    

rockwellautomation.com

expanding human possibility™

AMERICAS: Rockwell Automation, 1201 South Second Street, Milwaukee, WI 53204-2496 USA, Tel: (1) 414.382.2000, Fax: (1) 414.382.4444

EUROPE/MIDDLE EAST/AFRICA: Rockwell Automation NV, Pegasus Park, De Kleetlaan 12a, 1831 Diegem, Belgium, Tel: (32) 2 663 0600, Fax: (32) 2 663 0640

ASIA PACIFIC: Rockwell Automation, Level 14, Core F, Cyberport 3, 100 Cyberport Road, Hong Kong, Tel: (852) 2887 4788, Fax: (852) 2508 1846

Allen-Bradley, Rockwell Automation, and Rockwell Software are trademarks of Rockwell Automation. Trademarks not belonging to Rockwell Automation are property of their respective companies.

Publication 194E-IN011J-EN-P- July 2020

Copyright ©2020 Rockwell Automation, Inc. All Rights Reserved. Printed in USA.



14-400-911-10

DIR 14_400_911 (Version 10)