

Bulletin 193 E100 DIN Rail or Panel Adapter Installation

(Cat 193-1EPB, 193-1EPD, 193-1EPE)



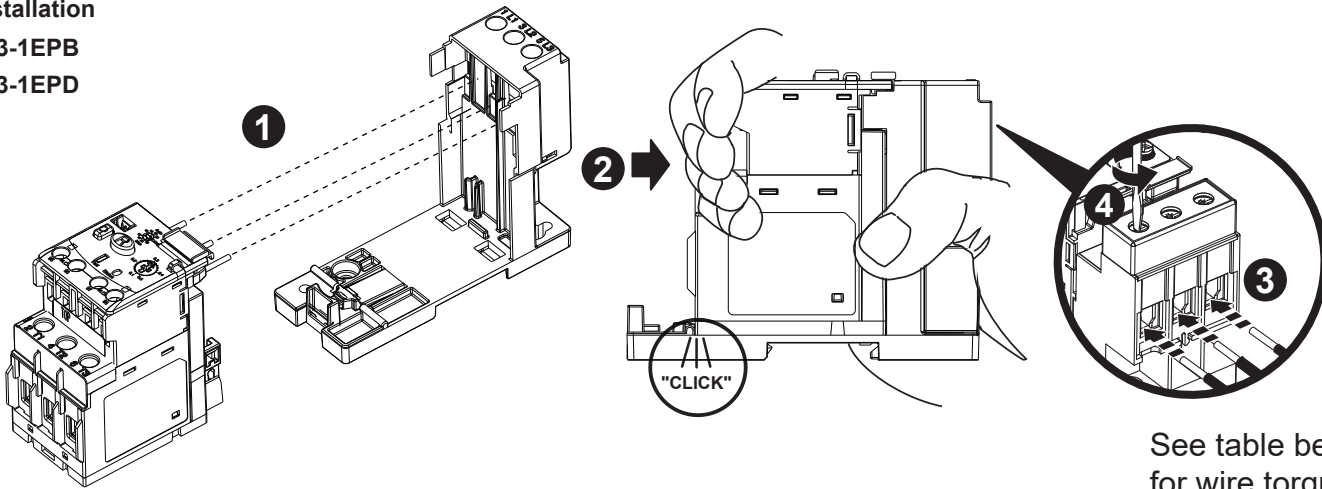
At the end of its life, this equipment should be collected separately from any unsorted municipal waste.

WARNING: To prevent electrical shock, disconnect from power source before installing or servicing. Install in suitable enclosure. Keep free from contaminants. Follow NFPA70E requirements.

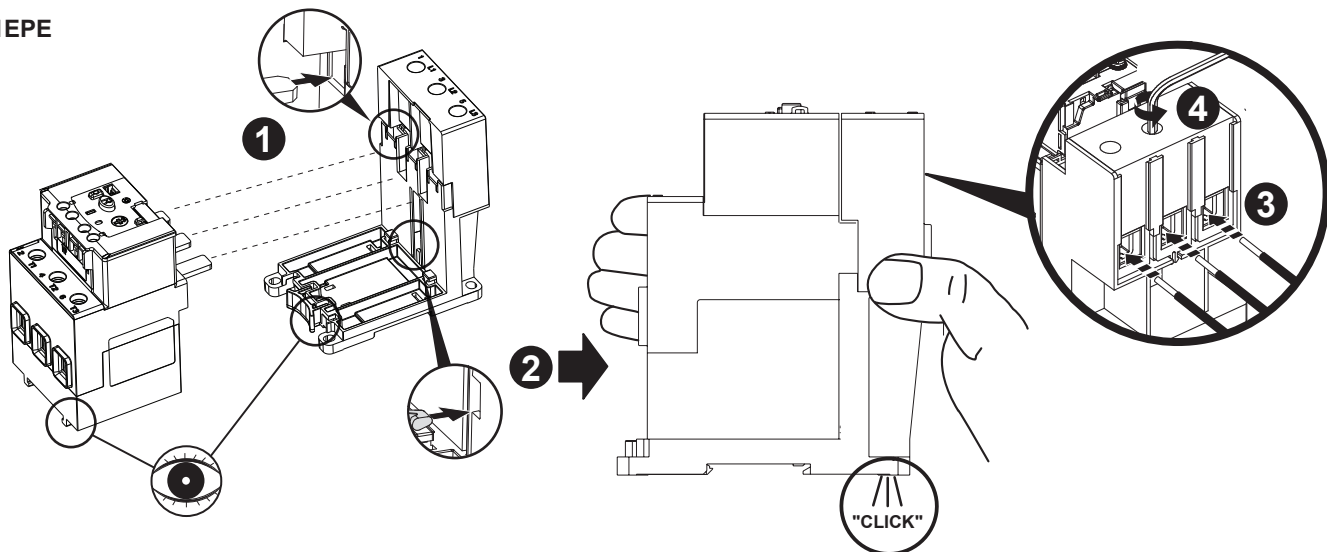
Installation

193-1EPB

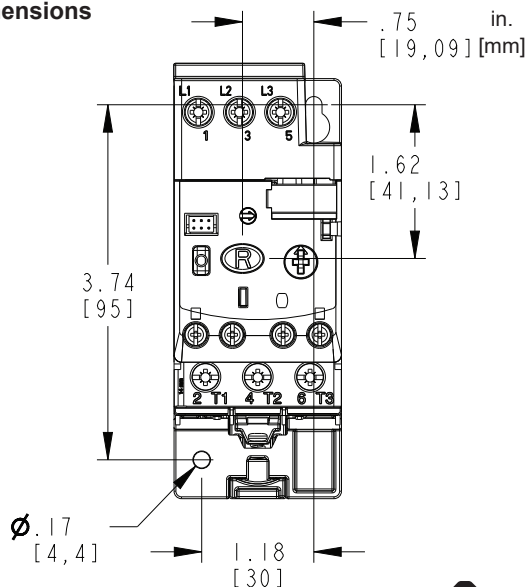
193-1EPD



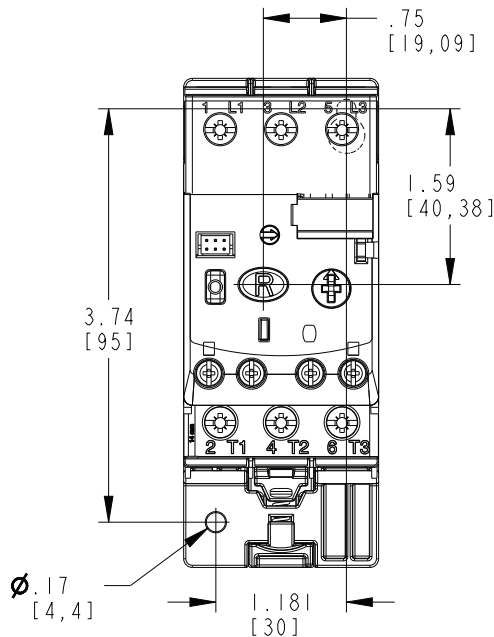
193-1EPE



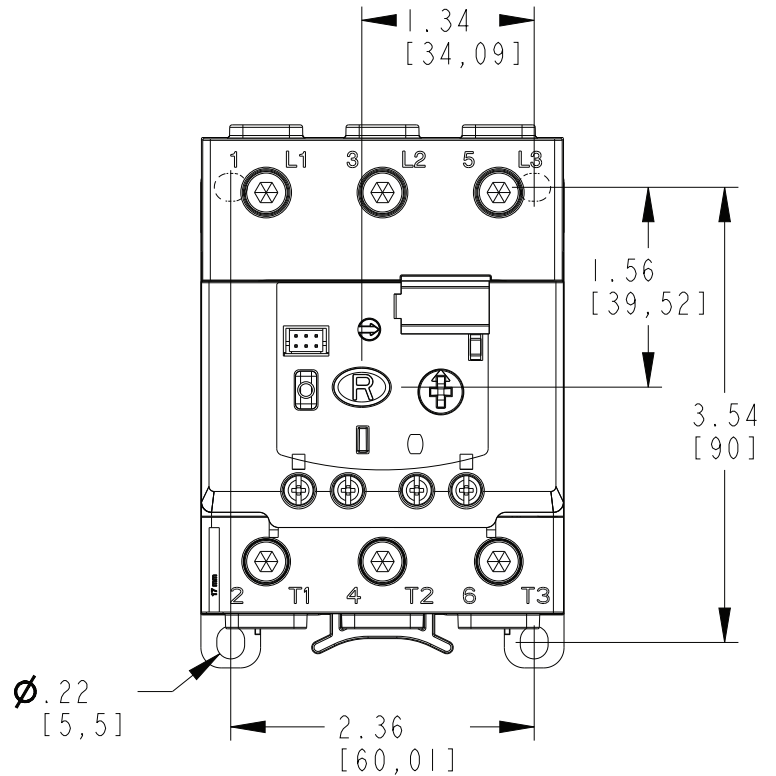
193-1EPB Panel Mount Dimensions



193-1EPD Panel Mount Dimensions



193-1EPE Panel Mount Dimensions



Main Connections

Rated Insulation Voltage (Ui): 690V AC
 Rated Operational Voltage (Ue) IEC/UL: 690V AC / 600V AC

Wire Type	# Wires	193-1EPB		193-1EPD		193-1EPE	
		Range	Torque	Range	Torque	Range	Torque
Flexible Stranded w/ Ferrule	1 Wire	2.5...6.0 mm ²	1.8 N•m (16 lb-in)	1.5...16 mm ²	2.3 N•m (20 lb-in)	4.0...35 mm ²	4.6 N•m (40 lb-in)
	2 Wires*	(14...10 AWG)		1.5...10 mm ²		4.0...25 mm ²	
Stranded / Solid	1 Wire	2.5...10 mm ²		1.5...16 mm ²		4.0...35 mm ²	
	2 Wires*	2.5...6.0 mm ² (14...10 AWG)		1.5...10 mm ² (16...8 AWG)		4.0...35 mm ² (12...2 AWG)	

*FOR MULTIPLE CONDUCTOR APPLICATIONS THE SAME SIZE AND STYLE WIRE MUST BE USED.

For Technical Support, visit rok.auto/support.

Rockwell Automation maintains current product environmental compliance information on its website at rok.auto/pec.

Product certificates are located in the Rockwell Automation Literature Library: rok.auto/certifications.

Rockwell Otomasyon Ticaret A.Ş., Kar Plaza İş Merkezi E Blok Kat:6 34752 İçerenköy, İstanbul, Tel: +90 (216) 5698400

EEE Yönetmeliğine Uygundur.

rockwellautomation.com

Connect with us.

expanding human possibility™

AMERICAS: Rockwell Automation, 1201 South Second Street, Milwaukee, WI 53204-2496 USA, Tel: 414.382.2000, Fax: (1) 414.382.4444

EUROPE/MIDDLE EAST/AFRICA: Rockwell Automation NV, Pegasus Park, De Kleetlan 12a, 1831 Diegem, Belgium, Tel: (32) 2663 0600, Fax: (32) 2663 0640

ASIA PACIFIC: Rockwell Automation, Level 14, Core F, Cyberport 3, 100 Cyberport Road, Hong Kong, Tel: (852) 2887 4788, Fax: (852) 2501846

