

# Installation Instructions

Original Instructions



**Allen-Bradley**

by ROCKWELL AUTOMATION

## 1445 Gateway 2.0

Catalog Number 1445-G250

### Overview

Table 1 - Cat. No. 1445-G250 Gateway Components



Callout	Description
A	Gateway body
B	Evernet antenna
-	110...220V AC power cord (depending on region)

### Installation

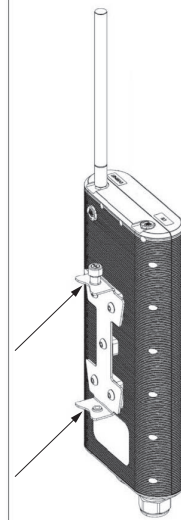
1. Select a location for the gateway body where power is present and the gateway body has a good line of site to the 1445-SENOW sensor assembly.
2. Insert the Evernet antenna by hand into the corresponding SMA port at the top of the gateway body.
3. Apply power to the gateway body.
4. To confirm connectivity, refer to the status indicators on the gateway body (see [Status Indicators on page 4](#)).

5. Permanently mount the gateway body in a vertical orientation with the antennas positioned upward. See [Pole Mount](#), [Wall Mount on page 2](#), or [Strut Channel Mount on page 3](#).
6. Verify the gateway status.

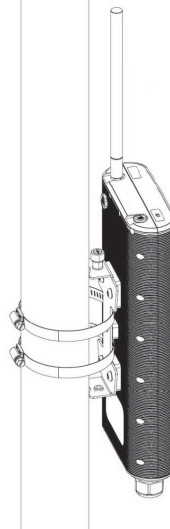
### Pole Mount

The mounting bracket is not used with this mounting method.

1. Align the two V-grooves on the gateway body with the pole.

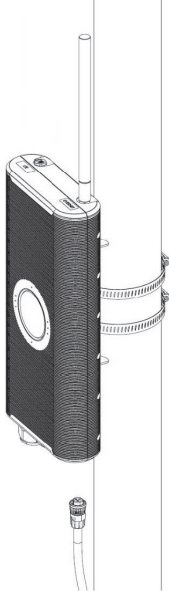


2. Fit two tie wraps or hose clamps through the slots behind the mounting plate and around the pole.

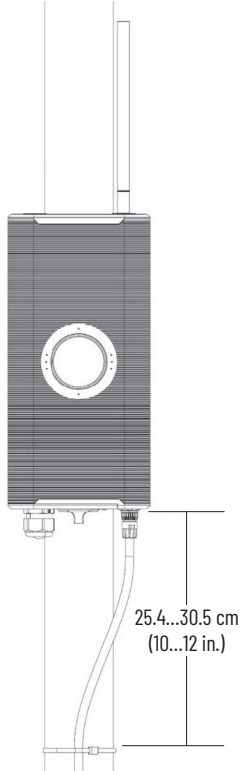


3. Fasten the ties or clamps until the gateway body is secured to the pole so it does not slide up or down.

4. Connect the AC power cord to the AC power input on the gateway body.

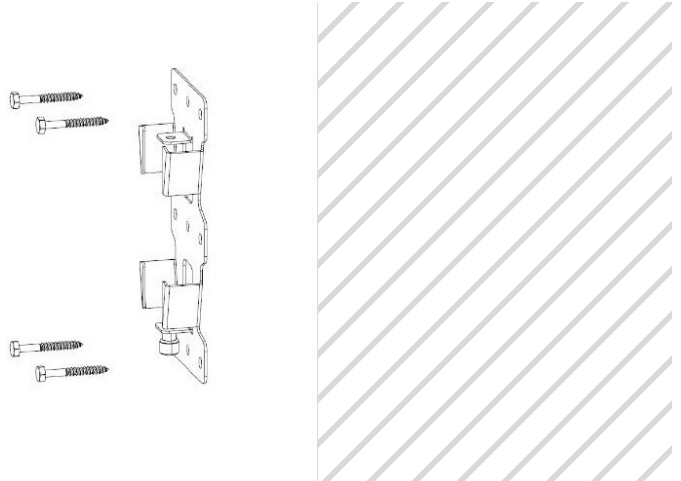


5. Secure the AC power cord to the pole 25.4...30.5 cm (10...12 in.) below the gateway body with a cable tie. Leave enough slack in the AC power cord so there is a slight bend between the tie-down point and the connection.

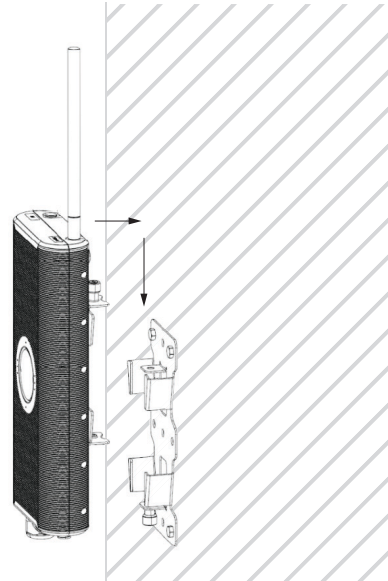


## Wall Mount

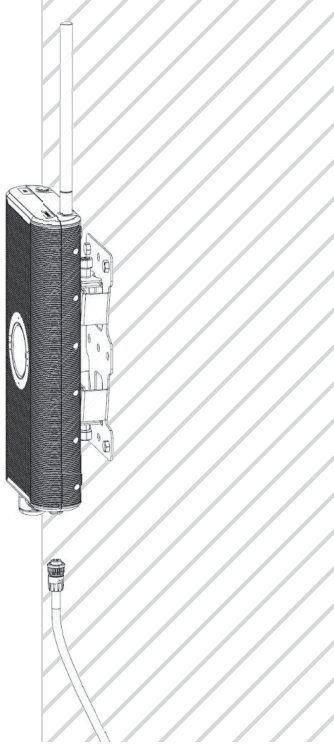
1. Fasten the mounting bracket to the wall with three or four 1/4 in. lag bolts. Position the mounting bracket as shown in the following image.



2. Slide the gateway body into the mounting bracket and tighten the top and bottom screws.



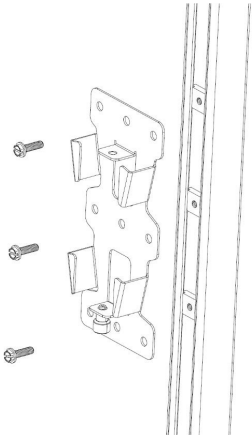
3. Connect the AC power cord to the AC power input on the gateway body.



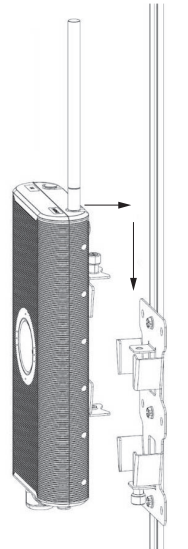
4. Secure the AC power cord to the wall 25.4...30.5 cm (10...12 in.) below the gateway body with a cable tie. Leave enough slack in the AC power cord so there is a slight bend between the tie-down point and the connection. See image in [step 5](#) on [page 2](#).

### Strut Channel Mount

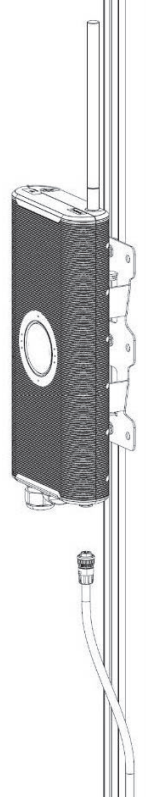
1. Fasten the mounting bracket to the strut channel with two or three 1/4-20 screws and channel nuts. Position the mounting bracket as shown in the following image. Confirm that the gateway body clears the bolt heads (when using a center pattern).



2. Slide the gateway body into the mounting bracket and tighten the top and bottom screws.



3. Connect the AC power cord to the AC power input on the gateway body.



4. Secure the AC power cord to the strut channel 25.4...30.5 cm (10...12 in.) below the gateway body. Leave enough slack in the AC power cord so there is a slight bend between the tie-down point and the connection. See image in [step 5](#) on [page 2](#).

## Troubleshooting

### Power over Ethernet (PoE) and PoE Debugging Tools

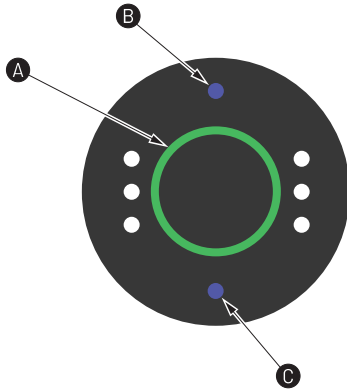
If you are uncertain if your equipment supports 802.3at, we suggest the Cudy POE200 30w Gigabit PoE+/PoE Injector.

To install and troubleshoot the PoE+, we recommend the PoE Texas POE-TESTER-GEN2 PoE Tester Tool and the PoE Texas POE-DETECTOR PoE Detector Tool. You can purchase these tools at <https://shop.poetexas.com>.

## Status Indicators

The center front of the gateway body shows a cluster of status indicators that report the status of the operating system and connectivity.

Table 2 - Gateway Status Indicators



Callout	Description	Status
A	Operating system	<ul style="list-style-type: none"> <li>Green = good</li> <li>Flashing red = Linux is down</li> <li>Progress wheel = start up</li> </ul>
B	Transmission status	One flash per minute = wakeup sent to all sensors
C	Receiver status	One flash per minute = data received from sensors

## Additional Resources

These documents contain additional information concerning related products from Rockwell Automation.

Resource	Description
1445 Wireless Condition Monitoring Installation Instructions, publication <a href="#">1445-IN001</a>	Describes how to install the 1445 wireless condition monitoring components.
1445 Wireless Condition Monitoring System User Manual, publication <a href="#">1445-UM001</a>	Describes how to configure and use the 1445 wireless condition monitoring system.
Safety Guidelines for the Application, Installation, and Maintenance of Solid-state Control, publication <a href="#">SGI-11</a>	Designed to harmonize with NEMA Standards Publication No. ICS 1.1-1987 and provides general guidelines for the application, installation, and maintenance of solid-state control in the form of individual devices or packaged assemblies that incorporate solid-state components.
Industrial Automation Wiring and Grounding Guidelines, publication <a href="#">1770-4.1</a>	Provides general guidelines for installing a Rockwell Automation industrial system.
Product Certifications website, <a href="#">rok.auto/certifications</a> .	Provides declarations of conformity, certificates, and other certification details.

You can view or download publications at [rok.auto/literature](#).

## Waste Electrical and Electronic Equipment (WEEE)







At the end of life, this equipment should be collected separately from any unsorted municipal waste.

Rockwell Automation maintains current product environmental compliance information on its website at [rok.auto/pec](#).

Your comments help us serve your documentation needs better. If you have any suggestions on how to improve our content, complete the form at [rok.auto/docfeedback](#).

For technical support, visit [rok.auto/support](#).

Rockwell Otomasyon Ticaret A.Ş. Kar Plaza İş Merkezi E Blok Kat:6 34752 İçerenköy, İstanbul, Tel: +90 (216) 5698400 EEE Yönetmeliğine Uygundur

Connect with us.    

[rockwellautomation.com](#)

expanding **human possibility**<sup>®</sup>

AMERICAS: Rockwell Automation, 1201 South Second Street, Milwaukee, WI 53204-2496 USA, Tel: (1) 414.382.2000

EUROPE/MIDDLE EAST/AFRICA: Rockwell Automation NV, Pegasus Park, De Kleetlaan 12a, 1831 Diegem, Belgium, Tel: (32) 2663 0600

ASIA PACIFIC: Rockwell Automation SEA Pte Ltd, 2 Corporation Road, #04-05, Main Lobby, Corporation Place, Singapore 618494, Tel: (65) 6510 6608

UNITED KINGDOM: Rockwell Automation Ltd., Pitfield, Kiln Farm, Milton Keynes, MK11 3DR, United Kingdom, Tel: (44)(1908) 838-800

Allen-Bradley, expanding human possibility, and Rockwell Automation are trademarks of Rockwell Automation, Inc. Trademarks not belonging to Rockwell Automation are property of their respective companies.

Publication 1445-IN002A-EN-P - December 2024

Copyright © 2024 Rockwell Automation, Inc. All rights reserved. Printed in the U.S.A.