

# PowerMonitor 5000 Unit Optional Communication Modules

Catalog Numbers 1426-COMM-DNT, 1426-COMM-CNT

Topic	Page
About This Publication	1
Required Tools	1
Important User Information	2
Install a Communication Module	3
Replace a Communication Module	5
Additional Resources	5

## About This Publication

This document provides instructions on how to install or replace an optional communication module on a PowerMonitor™ 5000 unit. These are the available optional communication modules:

- 1426-COMM-DNT - DeviceNet Optional Communication Module
- 1426-COMM-CNT - ControlNet Optional Communication Module

The communication module installs in the optional communication slot on the front panel of the PowerMonitor 5000 unit. The installation is the same for all communication modules regardless of communication type.

## Required Tools

You need the following tools:

- Torx 8 screwdriver
- Small flat-bladed screwdriver

## Before You Begin



**WARNING:** Do not connect or disconnect any communication cable with power applied to this device or any device on the network. An electrical arc can occur and could cause an explosion in hazardous location installations. Be sure that power is removed or the area is nonhazardous before proceeding.



**ATTENTION:** Work in a static free environment and wear a properly grounded electrostatic discharge (ESD) wristband. Do not touch the communication module connector or its internal circuitry to avoid ESD.

## Important User Information

Solid-state equipment has operational characteristics differing from those of electromechanical equipment. Safety Guidelines for the Application, Installation and Maintenance of Solid State Controls (publication [SGI-1.1](#) available from your local Rockwell Automation sales office or online at <http://www.rockwellautomation.com/literature/>) describes some important differences between solid-state equipment and hard-wired electromechanical devices. Because of this difference, and also because of the wide variety of uses for solid-state equipment, all persons responsible for applying this equipment must satisfy themselves that each intended application of this equipment is acceptable.

In no event will Rockwell Automation, Inc. be responsible or liable for indirect or consequential damages resulting from the use or application of this equipment.

The examples and diagrams in this manual are included solely for illustrative purposes. Because of the many variables and requirements associated with any particular installation, Rockwell Automation, Inc. cannot assume responsibility or liability for actual use based on the examples and diagrams.

No patent liability is assumed by Rockwell Automation, Inc. with respect to use of information, circuits, equipment, or software described in this manual.

Reproduction of the contents of this manual, in whole or in part, without written permission of Rockwell Automation, Inc., is prohibited.

Throughout this manual, when necessary, we use notes to make you aware of safety considerations.



**WARNING:** Identifies information about practices or circumstances that can cause an explosion in a hazardous environment, which may lead to personal injury or death, property damage, or economic loss.



**ATTENTION:** Identifies information about practices or circumstances that can lead to personal injury or death, property damage, or economic loss. Attentions help you identify a hazard, avoid a hazard, and recognize the consequence.



**SHOCK HAZARD:** Labels may be on or inside the equipment, for example, a drive or motor, to alert people that dangerous voltage may be present.



**BURN HAZARD:** Labels may be on or inside the equipment, for example, a drive or motor, to alert people that surfaces may reach dangerous temperatures.

---

**IMPORTANT**

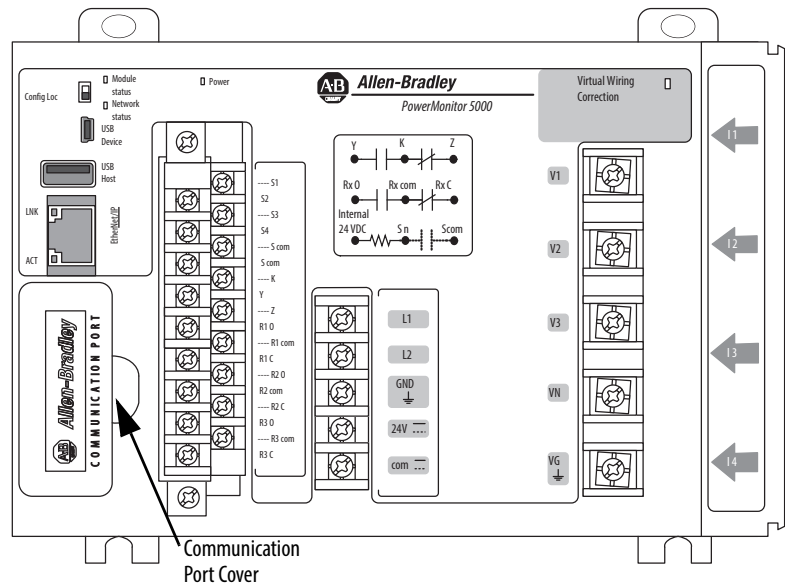
Identifies information that is critical for successful application and understanding of the product.

---

## Install a Communication Module

Follow these steps to install a new communication module.

1. Disconnect control and voltage sensing power from the power monitor.
2. Remove the optional communication port cover by prying gently with a small, flat-bladed screwdriver.



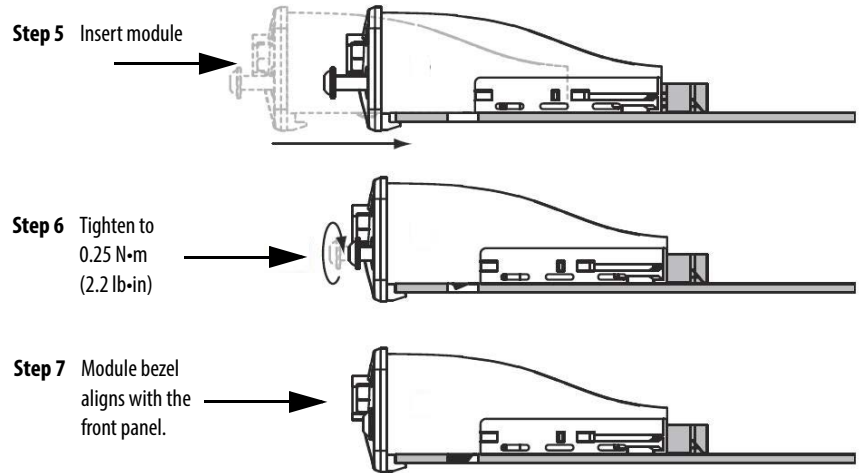
3. Verify that the fastening screws in the communication module are backed out approximately 4 mm (0.16 in.) and that the fastening cams do not protrude from the bottom of the module.
4. Carefully slide the communication module flat against the circuit board in the slot, aligning the tabs along the module's edges with the guides in the socket.

---

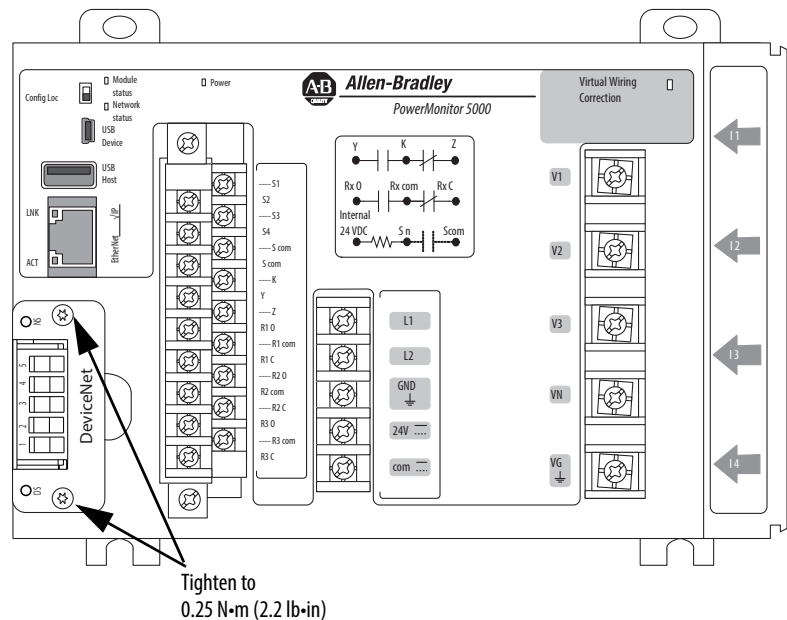
**IMPORTANT** When installing the module into the socket, make sure that the communication module is properly aligned into the socket prior to applying any force. Rough handling and/or excessive force in combination with misalignment can cause mechanical damage to the communication module or the power monitor.

---

5. Gently insert the module into its socket until the module is seated.



6. Tighten the screws with a Torx 8 screwdriver to 0.25 N•m (2.2 lb•in).



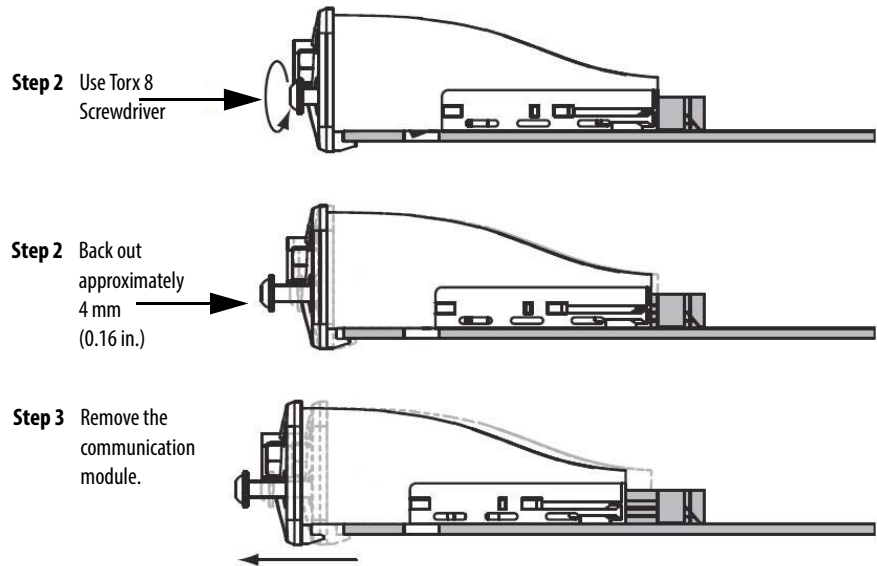
7. Check that the module is properly seated.

The rear edge of the module bezel aligns with the front panel of the power monitor. Tightening the screws engages the fastening cams with holes in the circuit board, which helps resist efforts to remove the card.

## Replace a Communication Module

Follow these steps to replace a communication module.

1. Disconnect control and voltage sensing power from the power monitor.
2. With a Torx 8 screwdriver, back out the fastening screws approximately 4 mm (0.16 in.).  
Do not remove the screws.
3. Gently remove the communication module from the power monitor.



4. Install the new communication module by following steps 3...7 under [Install a Communication Module](#) on [page 3](#).

## Additional Resources

These documents contain additional information concerning related products from Rockwell Automation.

Resource	Description
PowerMonitor 5000 Unit User Manual, publication <a href="#">1426-UM001</a>	Provides information on installing, configuring, and using the PowerMonitor 5000 unit.
Industrial Automation Wiring and Grounding Guidelines, publication <a href="#">1770-4.1</a>	Provides general guidelines for installing a Rockwell Automation® industrial system.
Product Certifications website, <a href="http://www.ab.com">http://www.ab.com</a>	Provides declarations of conformity, certificates, and other certification details.

You can view or download publications at <http://www.rockwellautomation.com/literature/>. To order paper copies of technical documentation, contact your local Allen-Bradley distributor or Rockwell Automation sales representative.

## Rockwell Automation Support

Rockwell Automation provides technical information on the Web to assist you in using its products.

At <http://www.rockwellautomation.com/support>, you can find technical manuals, technical and application notes, sample code and links to software service packs, and a MySupport feature that you can customize to make the best use of these tools. You can also visit our Knowledgebase at <http://www.rockwellautomation.com/knowledgebase> for FAQs, technical information, support chat and forums, software updates, and to sign up for product notification updates.

For an additional level of technical phone support for installation, configuration, and troubleshooting, we offer TechConnect<sup>SM</sup> support programs. For more information, contact your local distributor or Rockwell Automation representative, or visit <http://www.rockwellautomation.com/support/>.

## Installation Assistance

If you experience a problem within the first 24 hours of installation, review the information that is contained in this manual. You can contact Customer Support for initial help in getting your product up and running.

United States or Canada	1.440.646.3434
Outside United States or Canada	Use the <a href="#">Worldwide Locator</a> at <a href="http://www.rockwellautomation.com/rockwellautomation/support/overview.page">http://www.rockwellautomation.com/rockwellautomation/support/overview.page</a> , or contact your local Rockwell Automation representative.

## New Product Satisfaction Return

Rockwell Automation tests all of its products to help ensure that they are fully operational when shipped from the manufacturing facility. However, if your product is not functioning and needs to be returned, follow these procedures.

United States	Contact your distributor. You must provide a Customer Support case number (call the phone number above to obtain one) to your distributor to complete the return process.
Outside United States	Please contact your local Rockwell Automation representative for the return procedure.

## Documentation Feedback

Your comments will help us serve your documentation needs better. If you have any suggestions on how to improve this document, complete this form, publication [RA-DU002](#), available at <http://www.rockwellautomation.com/literature/>.

Allen-Bradley, Rockwell Software, Rockwell Automation, PowerMonitor, and TechConnect are trademarks of Rockwell Automation, Inc.  
Trademarks not belonging to Rockwell Automation are property of their respective companies.

**[www.rockwellautomation.com](http://www.rockwellautomation.com)**

### Power, Control and Information Solutions Headquarters

Americas: Rockwell Automation, 1201 South Second Street, Milwaukee, WI 53204-2496 USA, Tel: (1) 414.382.2000, Fax: (1) 414.382.4444  
Europe/Middle East/Africa: Rockwell Automation NV, Pegasus Park, De Kleetlaan 12a, 1831 Diegem, Belgium, Tel: (32) 2 663 0600, Fax: (32) 2 663 0640  
Asia Pacific: Rockwell Automation, Level 14, Core F, Cyberport 3, 100 Cyberport Road, Hong Kong, Tel: (852) 2887 4788, Fax: (852) 2508 1846