

Communication Firmware in PowerMonitor 500 Units with EtherNet/IP Network Communication - Firmware Revision 4.001 and Later

Catalog Numbers 1420-V1-ENT, 1420-V2-ENT, 1420-V1A-ENT, 1420-V2A-ENT, 1420-V1P-ENT, 1420-V2P-ENT

Topic	Page
Introduction	1
Download the Firmware and Updater Tool	1
Prepare the PowerMonitor 500 Unit	2
Install the Firmware	3
Additional Resources	5

Introduction

This document describes the procedure to update Ethernet network communication firmware in the PowerMonitor™ 500 units ending in -ENT. Read and follow the procedure outlined in this document carefully.

IMPORTANT Use the PM500 Ethernet Firmware Update Tool 1.0.30 to update the PowerMonitor 500 unit to firmware revisions 5.001, 4.002, or 4.001.

Download the Firmware and Updater Tool

Download the latest PowerMonitor 500 unit firmware, updater tool, and release notes from the Product Compatibility and Download Center. <http://www.rockwellautomation.com/rockwellautomation/support/pcdc.page>.

Install the Updater Tool

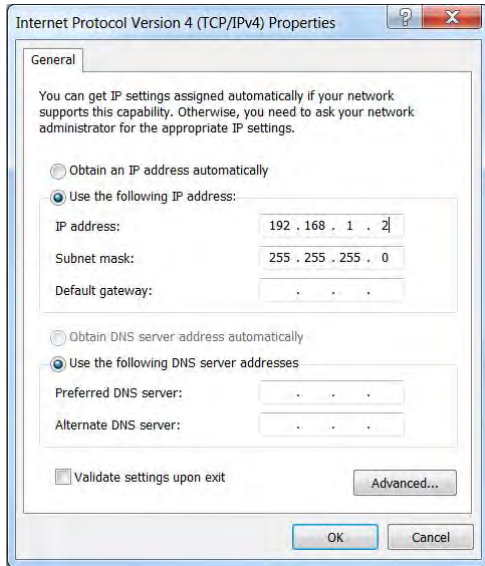
To install the Updater Tool, follow these steps.

1. Extract files from the firmware zip archive to a folder.
2. Double-click the PM500 Ethernet Firmware Update Tool 1.0.30 Setup.exe file to install the updater tool.
3. Follow the prompts to install the PM500 Ethernet Firmware Update Tool.

Prepare the PowerMonitor 500 Unit

To prepare the PowerMonitor 500 unit for the firmware installation, follow these steps.

1. Configure a personal computer with a fixed IP address of 192.168.1.x (where $x \neq 10$) on its wired Ethernet network port.



2. Make a note of the existing PowerMonitor 500 unit Ethernet network IP address and Modbus/TCP port.
3. Enter programming mode through the front display of the PowerMonitor 500 unit and navigate to the Ethernet menu.
4. Configure the PowerMonitor 500 unit to use a fixed IP address of 192.168.1.10 (required) and port 502 for Modbus/TCP.

See Chapter 3 of the PowerMonitor 500 Unit user manual, publication [1420-UM001](#), for more information on how to configure the Ethernet settings of the PowerMonitor 500 unit.



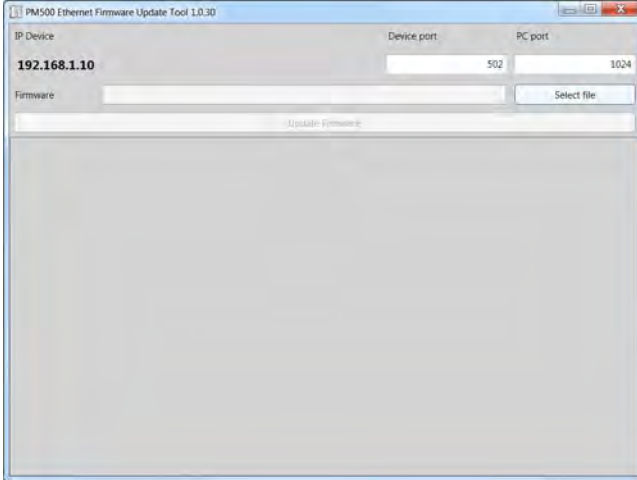
5. Connect the PowerMonitor 500 unit to the personal computer Ethernet port by using a crossover or straight-through⁽¹⁾ patch cable. The connection must be point-to-point without a router or any other network devices.

(1) A straight-through cable works if the NIC on your personal computer supports Auto MDI-X (required on Gigabit Ethernet NICs).

Install the Firmware

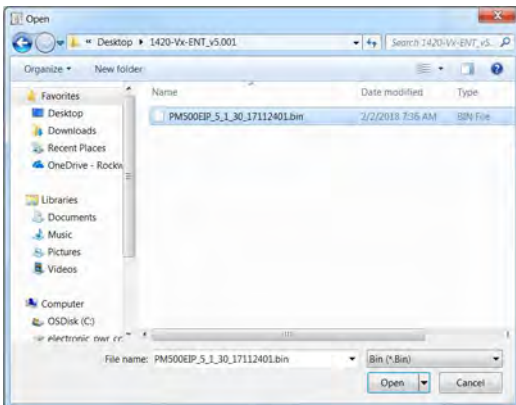
To install the firmware, follow these steps.

1. Open the PM500 Ethernet Firmware Update Tool.
2. Click Select File.



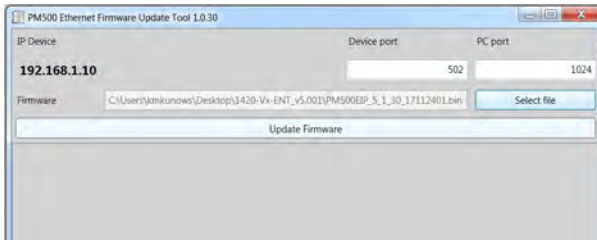
The file explorer window opens.

3. Navigate to the firmware BIN file, select the file, and click Open.

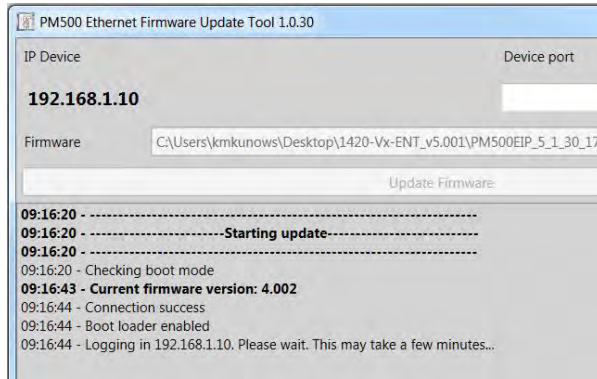


The selected path to the BIN file is displayed in the Firmware field of the update tool.

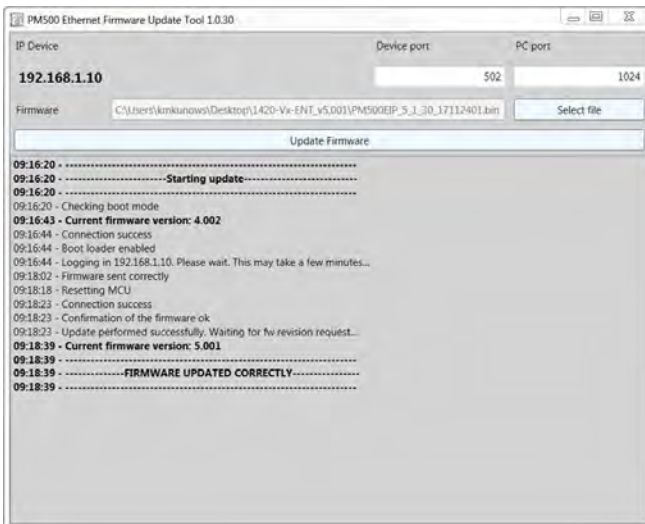
- Click Update Firmware.



The update begins.



- When the firmware update is complete, close the updater tool.



- Once you have confirmed that the firmware has updated successfully, power cycle the unit.
- You can now change the PowerMonitor 500 unit Ethernet IP address back to its original value as noted in [Prepare the PowerMonitor 500 Unit, step 2](#).

Additional Resources

These documents contain additional information concerning related products from Rockwell Automation.

Resource	Description
PowerMonitor 500 Unit User Manual, publication 1420-UM001	Provides installation instructions, wiring diagrams, configuration, and specifications for PowerMonitor 500 units.
Industrial Automation Wiring and Grounding Guidelines, publication 1770-4.1	Provides general guidelines for installing a Rockwell Automation industrial system.
Product Certifications website, http://www.rockwellautomation.com/global/certification/overview.page	Provides declarations of conformity, certificates, and other certification details.

You can view or download publications at <https://www.rockwellautomation.com/global/literature-library/overview.page>. To order paper copies of technical documentation, contact your local Allen-Bradley distributor or Rockwell Automation sales representative.

Rockwell Automation Support

Use the following resources to access support information.

Technical Support Center	Knowledgebase Articles, How-to Videos, FAQs, Chat, User Forums, and Product Notification Updates.	https://rockwellautomation.custhelp.com/
Local Technical Support Phone Numbers	Locate the phone number for your country.	http://www.rockwellautomation.com/global/support/get-support-now.page
Direct Dial Codes	Find the Direct Dial Code for your product. Use the code to route your call directly to a technical support engineer.	http://www.rockwellautomation.com/global/support/direct-dial.page
Literature Library	Installation Instructions, Manuals, Brochures, and Technical Data.	http://www.rockwellautomation.com/global/literature-library/overview.page
Product Compatibility and Download Center (PCDC)	Get help determining how products interact, check features and capabilities, and find associated firmware.	http://www.rockwellautomation.com/global/support/pcdc.page

Documentation Feedback

Your comments will help us serve your documentation needs better. If you have any suggestions on how to improve this document, complete the How Are We Doing? form at http://literature.rockwellautomation.com/idc/groups/literature/documents/du/ra-du002_-en-e.pdf.

Rockwell Automation maintains current product environmental information on its website at <http://www.rockwellautomation.com/rockwellautomation/about-us/sustainability-ethics/product-environmental-compliance.page>.

Allen-Bradley, PowerMonitor, Rockwell Automation, and Rockwell Software are trademarks of Rockwell Automation, Inc. Trademarks not belonging to Rockwell Automation are property of their respective companies.

Rockwell Otomasyon Ticaret A.Ş., Kar Plaza İş Merkezi E Blok Kat:6 34752 İçerenköy, İstanbul, Tel: +90 (216) 5698400

www.rockwellautomation.com

Power, Control and Information Solutions Headquarters

Americas: Rockwell Automation, 1201 South Second Street, Milwaukee, WI 53204-2496 USA, Tel: (1) 414.382.2000, Fax: (1) 414.382.4444
Europe/Middle East/Africa: Rockwell Automation NV, Pegasus Park, De Kleetlaan 12a, 1831 Diegem, Belgium, Tel: (32) 2 663 0600, Fax: (32) 2 663 0640
Asia Pacific: Rockwell Automation, Level 14, Core F, Cyberport 3, 100 Cyberport Road, Hong Kong, Tel: (852) 2887 4788, Fax: (852) 2508 1846

Publication 1420-IN002A-EN-P - May 2018