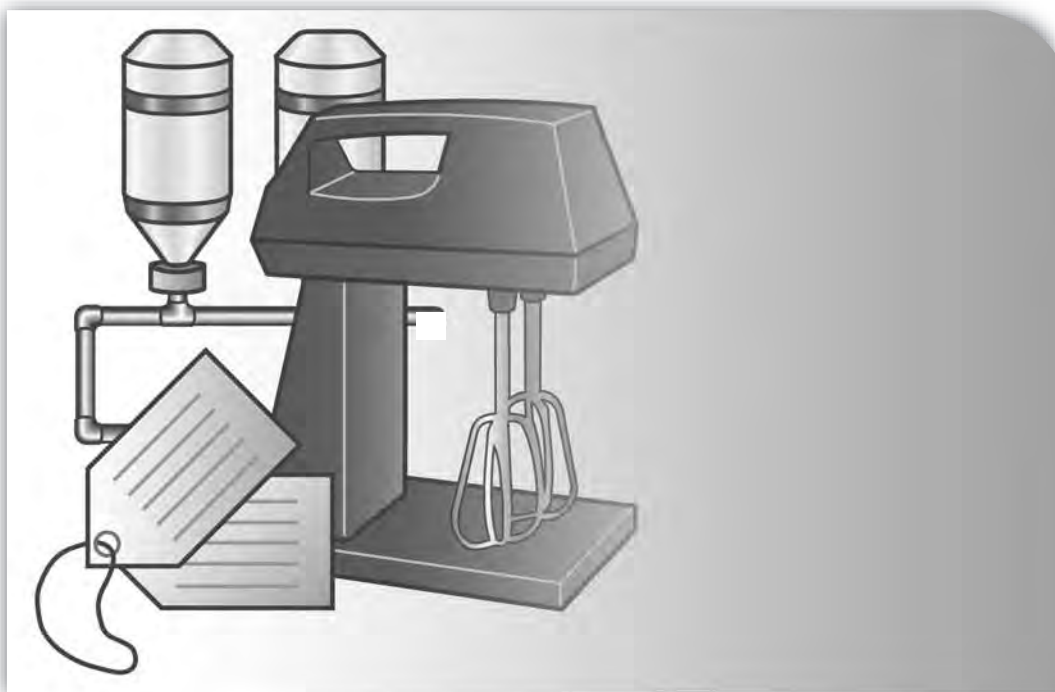


LISTEN.
THINK.
SOLVE.SM

RSView[®] 32



RECIPE PRO GETTING RESULTS GUIDE

PUBLICATION VWPRO-GR001D-EN-E–July 2011

Supersedes Publication VWPRO-GR001C-EN-E

ALLEN-BRADLEY • ROCKWELL SOFTWARE

**Rockwell
Automation**

Contact Rockwell

Customer Support Telephone — 1.440.646.3434
Online Support — <http://support.rockwellautomation.com>

Copyright Notice

© 2011 Rockwell Automation Technologies, Inc. All rights reserved. Printed in USA.
This document and any accompanying Rockwell Software products are copyrighted by Rockwell Automation Technologies, Inc. Any reproduction and/or distribution without prior written consent from Rockwell Automation Technologies, Inc. is strictly prohibited. Please refer to the license agreement for details.

Trademark Notices

Allen-Bradley, ControlLogix, FactoryTalk, Rockwell Automation, Rockwell Software, RSLinx, RSView and the Rockwell Software logo are registered trademarks of Rockwell Automation, Inc.

The following logos and products are trademarks of Rockwell Automation, Inc.:
AdvanceDDE, ControlView, Data Highway Plus, DH+, RSView32, RSView32 Resource Kit, and WINTelligent.
FactoryTalk Activation, FactoryTalk Live Data, and FactoryTalk Transaction Manager.
RSLinx Classic, SLC 5, SLC 500, and SoftLogix.

Other Trademarks

ActiveX, Microsoft, Microsoft Access, SQL Server, Visual Basic, Visual C++, Visual SourceSafe, Windows, Windows ME, Windows NT, Windows 2000, Windows Server 2003, Windows XP, and Windows Vista are either registered trademarks or trademarks of Microsoft Corporation in the United States and/or other countries.
Adobe, Acrobat, and Reader are either registered trademarks or trademarks of Adobe Systems Incorporated in the United States and/or other countries.
ControlNet is a registered trademark of ControlNet International.
DeviceNet is a trademark of the Open DeviceNet Vendor Association, Inc. (ODVA).
Ethernet is a registered trademark of Digital Equipment Corporation, Intel, and Xerox Corporation.
OLE for Process Control (OPC) is a registered trademark of the OPC Foundation.
Oracle, SQL*Net, and SQL*Plus are registered trademarks of Oracle Corporation.
All other trademarks are the property of their respective holders and are hereby acknowledged.

Warranty

This product is warranted in accordance with the product license. The product's performance may be affected by system configuration, the application being performed, operator control, maintenance, and other related factors. Rockwell Automation is not responsible for these intervening factors. The instructions in this document do not cover all the details or variations in the equipment, procedure, or process described, nor do they provide directions for meeting every possible contingency during installation, operation, or maintenance. This product's implementation may vary among users.
This document is current as of the time of release of the product; however, the accompanying software may have changed since the release. Rockwell Automation, Inc. reserves the right to change any information contained in this document or the software at anytime without prior notice. It is your responsibility to obtain the most current information available from Rockwell when installing or using this product.

Contents

Chapter 1

Installing RSVIEW32 RecipePro.....	1
About RSVIEW32 RecipePro.....	1
System requirements.....	1
Installing RSVIEW32 RecipePro.....	2
Installing RSVIEW32 RecipePro with RSVIEW32 Active Display System.....	2
Installation steps	3

Chapter 2

Getting started with RSVIEW32 RecipePro.....	5
Welcome to RSVIEW32 RecipePro.....	5
Exploring RSVIEW32 RecipePro	6
RecipePro Setup.....	7
RecipePro Editor	7
RecipePro Operator Control Panel ActiveX control.....	8
RSVIEW32 RecipePro commands.....	9
Quick Start steps.....	9
Step 1 ■ Create a new recipe file.....	10
Step 2 ■ Create ingredients	10
Step 3 ■ Create a tag set	12
Step 4 ■ Create a data set.....	14
Step 5 ■ Create a recipe unit.....	17
Step 6 ■ Configure an Operator Control Panel.....	18
Step 7 ■ Run your RecipePro project.....	19

Chapter 3

Getting the information you need.....	21
Using RSVIEW32 RecipePro online help.....	21

Viewing and printing the help contents	22
Using the index	23
Finding RSVIEW32 RecipePro version information	23
Exploring the RSVIEW32 RecipePro sample project	24
For more information	24
Technical support	25
.....	26

1

Installing RSView32 RecipePro

About RSView32 RecipePro

RSView32 RecipePro™ extends the functionality of RSView32™ with advanced recipe management. RSView32 RecipePro integrates directly with the RSView32 Project Manager window. With RSView32 RecipePro, you can configure multiple recipe projects and easily transfer recipe process data to and from your automation equipment.

System requirements

RSView32 RecipePro requires **RSView32 version 7.60.00**. Recommended requirements for RSView32 RecipePro are based on the requirements for RSView32.

Recommended hardware. Personal computer with 200 MHz Intel® Pentium® processor and 64 MB of RAM. Individual applications may require a faster processor or more RAM. For detailed recommendations consult the publication "Getting Results with RSView32" or check the RSView32 Support Library on the Rockwell Software website.

Recommended operating systems. Microsoft® Windows® Server 2003 R2 Standard Edition with Service Pack 2, Windows XP Professional with Service Pack 1 or later, Microsoft Windows 2000 Server with Service Pack 4 or Windows 2000 Professional with Service Pack 4; Windows Vista Business with Service Pack 1 or later (32-Bit) or Windows Vista Home Basic with Service Pack 1 or later (32-Bit); Windows 7 Professional (32-Bit); and Windows Server 2008 Standard Edition with Service Pack 2 (32-Bit) are supported.

Installing RSVIEW32 RecipePro

As part of the installation process, RSVIEW32 RecipePro creates program folders and modifies registry entries in your computer's operating system. When installing RSVIEW32 RecipePro, you must be logged in as a user with administrator rights to allow the installation program to modify the registries.

RSVIEW32 RecipePro installs as an extension to RSVIEW32 and does not require separate activation.

To configure and run RecipePro projects, install the full RSVIEW32 RecipePro development and runtime software on the same computer where RSVIEW32 is installed.

Installing RSVIEW32 RecipePro with RSVIEW32 Active Display System

RSVIEW32 Active Display System™ is a client/server option that allows you to interact with your RSVIEW32 applications remotely-across either a Local Area Network or the Internet. For information about installing and using RSVIEW32 Active Display System, refer to the publication, "Getting Results with RSVIEW32 Active Display System."

To use RSVIEW32 RecipePro with RSVIEW32 Active Display System:

1. Install the full RSVIEW32 RecipePro development and runtime software on the same computer where RSVIEW32 and the RSVIEW32 Active Display System Server are installed. (During installation, select "Full Install.")

2. Install the RSView32 RecipePro ActiveXT™ control on each computer where an RSView32 Active Display Client is installed. (During installation, select "Controls Only.")

TIP

So that client windows always reflect the most up-to-date information, change your system Internet settings to check for newer versions each time a display is opened. The steps to do this vary, depending on the browser installed on your computer.

The steps below apply to Microsoft Internet Explorer 4.x, 5.x and 6.x:

1. From the Start menu, select Settings > Control Panel > Internet.
 2. Click the General tab.
 3. In the Temporary Internet files area, click the Settings button.
 4. Select the option: Every visit to the page.
-

Installation steps

The steps below explain how to install RSView32 RecipePro software from a CD ROM to your computer. Before installing RSView32 RecipePro, be sure that either RSView32 7.60.00 or RSView32 Active Display System is installed on the computer.

1. Close all open Windows programs.
2. Place the RSView32 RecipePro CD-ROM in your CD-ROM drive. The CD-ROM should start running automatically.
If the CD-ROM does not start automatically, run D:\SETUP.EXE where D is the drive containing the CD-ROM.
3. Follow the on-screen instructions.
4. In the Select Components window, select either **Full Install** or **Controls Only**.
 - To install the complete RSView32 RecipePro development and runtime system, select Full Install.
 - To install the RSView32 RecipePro ActiveX control with the RSView32

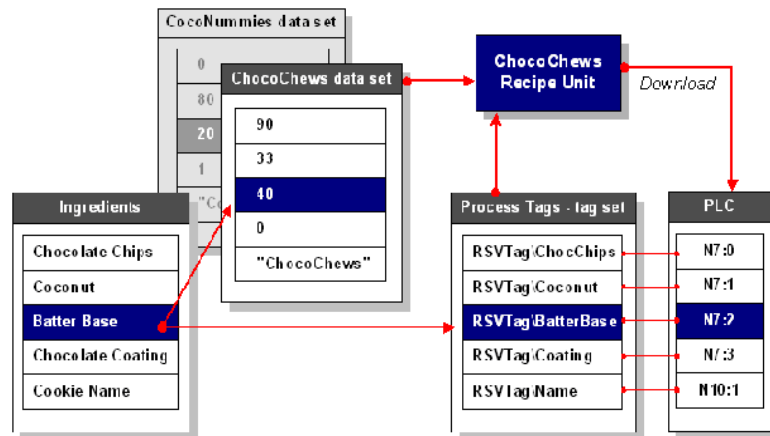
Active Display System client, select Controls Only.

5. After installation is complete, shut down and restart your computer before running RSVIEW32.

Getting started with RSVIEW32 RecipePro

Welcome to RSVIEW32 RecipePro

RSVIEW32 RecipePro extends the functionality of RSVIEW32 with advanced recipe management. With RSVIEW32 RecipePro, you can configure multiple recipe projects and easily transfer recipe process data to and from your automation equipment. Each recipe project includes ingredients, tag sets (which specify destinations for ingredient values), data sets (which specify values for ingredients), and recipe units (which link data sets and tag sets for uploading and downloading), all arranged in an easy-to-use spreadsheet.

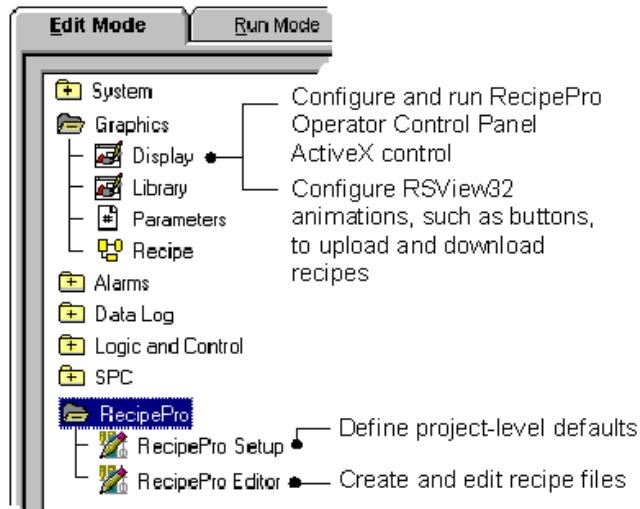


RecipePro allows you to easily import existing WINtelligent Recipe™ and other RecipePro recipe files into new RecipePro projects. RecipePro also provides a quick and easy way to print a detailed report of all of the elements in a recipe file.

The runtime operator interface to RecipePro functionality is through an ActiveX control that you insert in a standard RSVIEW32 graphic display.

Exploring RSVIEW32 RecipePro

RSVIEW32 RecipePro integrates with the RSVIEW32 Project Manager.

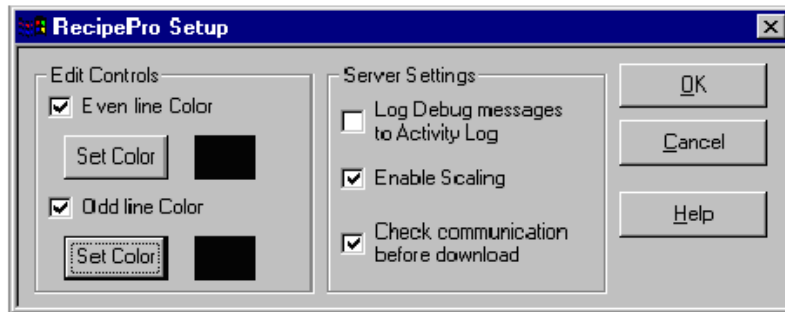


RSVIEW32 RecipePro consists of these parts:

- **RecipePro Setup.** Define project-level default settings.
- **RecipePro Editor.** Configure recipe files, download and upload recipe values, import WINtelligent Recipe files, and generate and print recipe reports.
- **RecipePro Operator Control Panel.** Configure the runtime operator interface.
- **RecipePro commands.** Upload and download recipe units and edit the recipe file during runtime.

RecipePro Setup

Use RecipePro Setup to configure optional project-level defaults. Project-level settings include selecting the text color that displays in RecipePro spreadsheets, sending detailed messages to the RSVIEW32 Activity Log to help debug recipe scenarios, setting the level of communication testing before downloads, and enabling or disabling download scaling. Project-level scaling controls whether operators can enter a scale factor, to proportionally modify all scalable ingredients in a recipe by a specified percentage, when downloading.



RecipePro Editor

Use the RecipePro Editor to configure recipe files, each of which can include up to 5000 ingredients, 1000 data sets, 500 tag sets, and 5000 recipe units. An ingredient is the starting point of a RecipePro file. A **tag set** is a collection of RSVIEW32 tags, one tag for each ingredient, which specifies the destinations for **ingredient** values. A **data set** is a collection of values, one value for each ingredient. The data can be a numeric value, such as 137; a string value, such as "stop process"; a 0 or 1 for a digital ingredient such as add or don't add, mix or don't mix; or the name of an RSVIEW32 tag.

Ingredients					Tag Set		Data Sets	
	Ingredient name	Ingredient Datatype	Prev/ManEntry Security	Scalable ingredient	Cookie Process Tags Tag set #1	ChocoChews data	CocoNummies data	
1	Chocolate Chips	Analog	*(Always Show)	<input checked="" type="checkbox"/>	QuickStart\ChocChips	90	0	
2	Coconut	Analog	*(Always Show)	<input checked="" type="checkbox"/>	QuickStart\Coconut	33	80	
3	Batter Base	Analog	*(Always Show)	<input checked="" type="checkbox"/>	QuickStart\BatterBase	40	20	
4	Chocolate Coating	Digital	*(Always Show)	<input type="checkbox"/>	QuickStart\Coating	0	1	
5	Cookie Name	String	*(Always Show)	<input type="checkbox"/>	QuickStart\Name	"ChocoChews"	"CocoNummies"	

Ingredient information

Asterisks show row is selected.

A **recipe unit** links any tag set to any data set in a recipe file for uploading and downloading recipe values to your automation equipment.

Name	Tag set	Data set	Security	Scale default	Description
ChocoChews	Cookie Process Tags	ChocoChews data	*	100%	Chewy chocolate cookies
CocoNummies	Cookie Process Tags	CocoNummies data	*	100%	Chewy coconut cookies

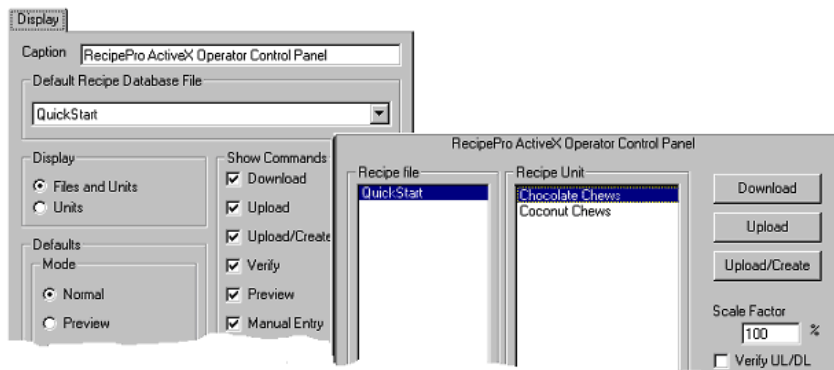
For example, suppose a facility mixes two different products on the same line during different shifts. By creating separate data sets for each product, you can download different ingredient values to the same line (identified by one tag set).

A recipe unit includes:

- **Security.** Uses RSVIEW32 security codes to control which recipe units individual operators can use at runtime.
- **Scale default.** Proportionally modifies scalable ingredient values by a specified percentage for adjustable batch sizes.
- **Commands.** Runs specified RSVIEW32 commands before or after each download or upload. For example, increment a memory tag to log the number of times a recipe unit is downloaded or uploaded.

RecipePro Operator Control Panel ActiveX control

Insert the RecipePro Operator Control Panel ActiveX control in an RSVIEW32 graphic display to configure the runtime operator interface.



Possible runtime functions include:

- downloading and uploading recipe units
- uploading a tag set's values into a new data set and creating a corresponding new recipe unit
- proportionally scaling recipe unit values on downloads
- manually entering new recipe unit values before downloading
- previewing and verifying uploaded and downloaded values

Only those ingredients for which the operator has security authorization are listed in the Preview and Manual Entry windows.

RSView32 RecipePro commands

Installing RecipePro adds new commands to RSView32.

- **RecipeProEdit.** Opens the RecipePro Editor for the specified RecipePro file.
- **RecipeProDownloadUnit.** Downloads a recipe unit, sending the values specified in a data set to the locations specified in a tag set.
- **RecipeProUploadUnit.** Uploads a recipe unit, sending data from the locations specified in a tag set to the values specified in a data set.

Quick Start steps

The following steps guide you through configuring and running a simple RecipePro project, using the RecipePro Sample project (RecipePro Sample.rsv). In this scenario, we create one recipe file with two recipe units that hold the instructions for mixing two types of cookies using the same set of process tags. The recipe file also holds instructions for applying a chocolate coating to one type of cookie.

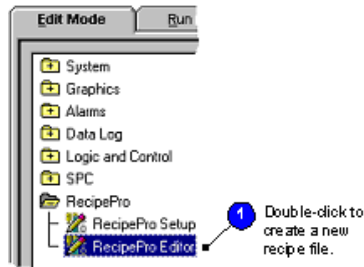
TIP

For details and more information as you work through these steps, click the Help button on any tab.

Step 1 ■ Create a new recipe file

A RecipePro recipe file contains all of the information about a recipe, including its ingredients, data sets, tag sets, and recipe units. Recipe files use the extension .RDB.

1. Start RSView32 and open the project named **RecipePro Sample.rsv**.
2. From the RSView32 Project Manager, double-click the RecipePro Editor to create a new recipe file.



3. To save the new recipe file, select **File > Save As**. Type the name **Quick Start**. (If a file with that name already exists, click Yes to replace it with your new recipe file.)

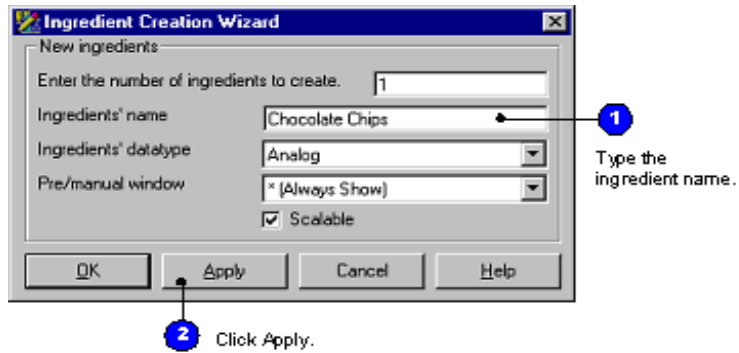
Step 2 ■ Create ingredients

A RecipePro ingredient is the starting point of a recipe file. An ingredient might be an element in a product, such as flour, sugar, pigment, or binding agent, or it might be an element in a process, such as temperature, mixing speed, or bottle size.

1. On the Ingredients tab, click the **New Ingredient** button.



2. In the Ingredients' Name box, type **Chocolate Chips**. Leave the other default values unchanged, and click **Apply**.



3. Create the following ingredients in the same way:

- Coconut
- Batter Base

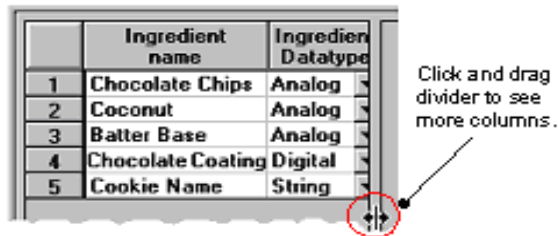
4. Create another ingredient named **Chocolate Coating**. In the Ingredients' datatype box, select **Digital**. Click **Apply**.



5. Create a last ingredient named **Cookie Name**. In the Ingredients' datatype box, select **String**. Click OK.



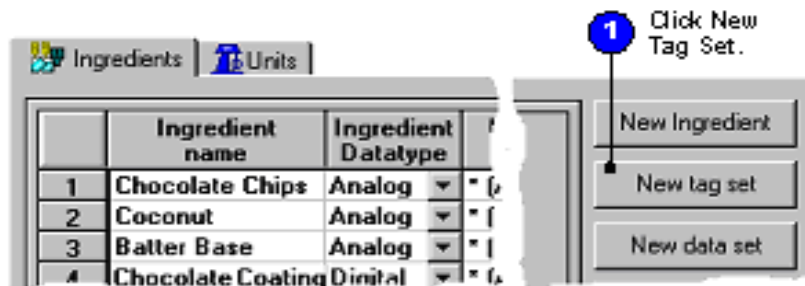
6. To see all of the information about your new ingredients, click and drag column dividers in the spreadsheet.



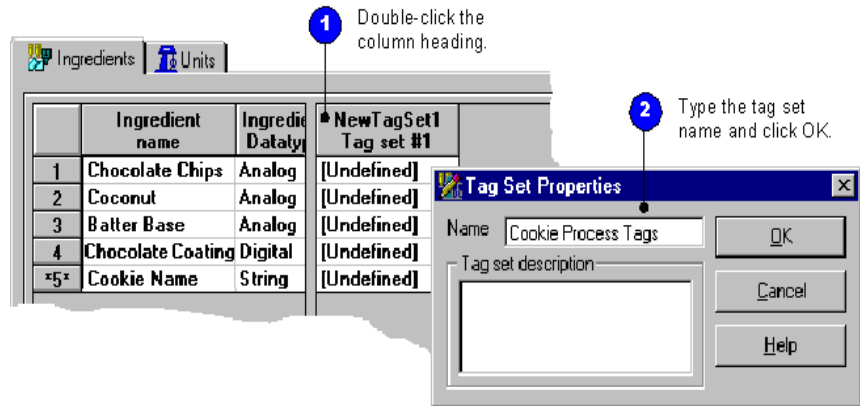
Step 3 ■ Create a tag set

A RecipePro tag set is a collection of RSVIEW32 tags, one tag for each ingredient in a recipe file, which specifies the destinations for ingredient values. A single list of ingredients can use multiple tag sets.

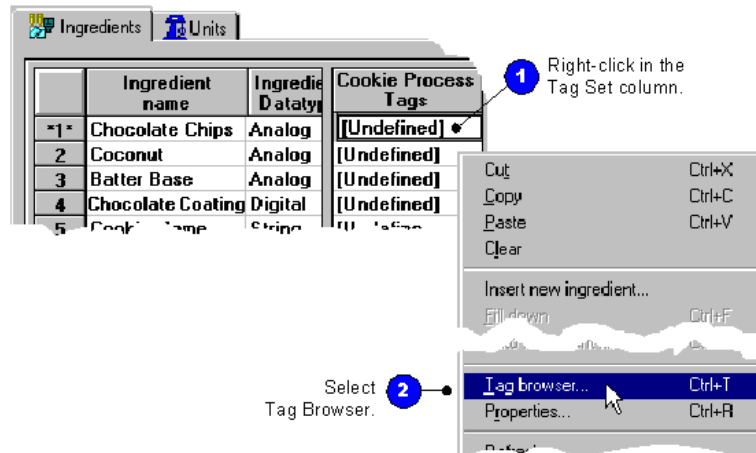
1. On the Ingredients tab, click the **New Tag Set** button.



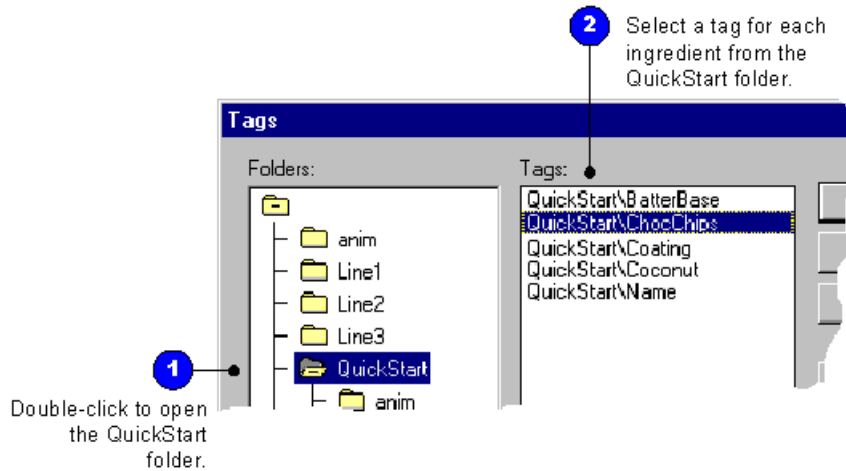
- So that you can see the new tag set column, click and drag the column divider.
- To change its name, double-click the **Tag Set** column heading. In the Name box, type **Cookie Process Tags**. Click OK.



- Attach RSVIEW32 tags to each ingredient. In the first row of the spreadsheet, right-click **[Undefined]** in the Cookie Process Tags (tag set) column. From the context menu, select **Tag Browser**.



5. In the Folders pane of the Tag Browser window, open the QuickStart folder. In the Tags pane, select the tag **QuickStart\ChocChips**. Click OK.

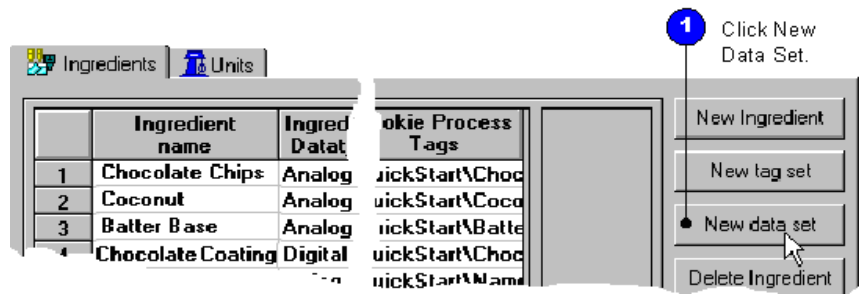


6. For each of the other ingredients, attach a corresponding tag from the QuickStart folder.

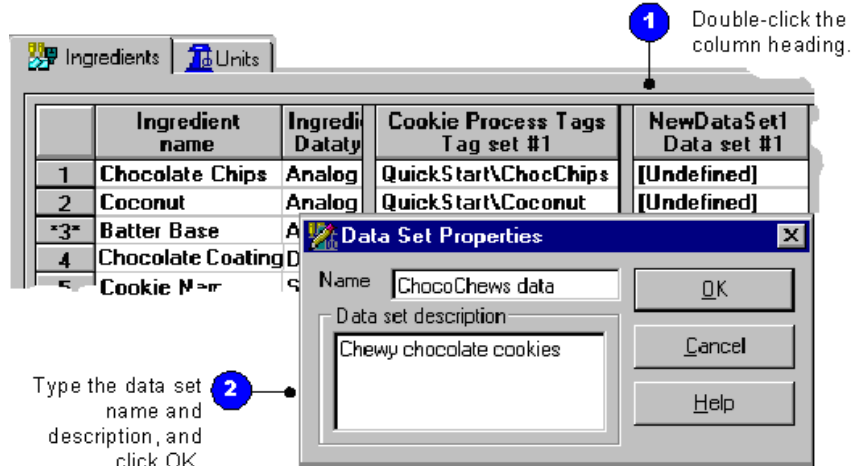
Step 4 ■ Create a data set

A data set is a collection of values, one value for each ingredient in a recipe file. The data can be a numeric value, such as 137; a string value, such as "stop process"; a 0 or 1 for a digital ingredient such as add or don't add, mix or don't mix; or the name of an RSVIEW32 tag. Data values must be consistent with the ingredient's data type. A single list of ingredients can use multiple data sets.

1. On the Ingredients tab, click the **New Data Set** button.



2. To change its name, double-click the Data Set column heading. In the Name box, type **ChocoChews data**. In the Description box, type **Chewy chocolate cookies**. Click OK.



3. In the Data Set column, type the following values to correspond with each ingredient:

- Chocolate chips - 90
- Coconut - 33
- Batter base - 40
- Chocolate coating - 0

- Cookie name - "ChocoChews" (be sure to use quotation marks)

	Ingredient name	Ingredient Datatype	Cookie Process Tags Tag set #1	ChocoChews data
1	Chocolate Chips	Analog	QuickStart\ChocChips	90
2	Coconut	Analog	QuickStart\Coconut	33
3	Batter Base	Analog	QuickStart\BatterBase	40
4	Chocolate Coating	Digital	QuickStart\Coating	0
5	Cookie Name	String	QuickStart\Name	"ChocoChews"

1 Type a data value for each ingredient.

4. Create another new data set to hold ingredient values for chewy coconut cookies. Click the **New Data Set** button. Change the data set name to **CocoNummies data** and the description to **Chewy coconut cookies**.

Double-click the column heading.

	Ingredient name	Ingredient Datatype	Cookie Process Tags Tag set #1	ChocoChews data	NewDataSet1 Data set #2
1	Chocolate Chips	Analog	QuickStart\ChocChips	90	[Undefined]
2	Coconut	Analog	QuickStart\Coconut	33	[Undefined]
3	Batter Base	Analog	QuickStart\BatterBase	40	[Undefined]
4	Chocolate Coating	Digital	QuickStart\Coating		
5	Cookie Name	String	QuickStart\Name		

2 Type a data set name and description.

Data Set Properties

Name: CocoNummies data

Data set description: Chewy coconut cookies

Buttons: OK, Cancel, Help

5. In the CocoNummies data set column, type the following values to correspond with each ingredient:

- Chocolate chips - 0
- Coconut - 80
- Batter base - 20
- Chocolate coating - 1
- Cookie name - "CocoNummies" (be sure to use quotation marks)

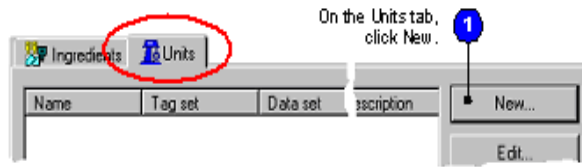
	Ingredient name	Ingredient Datatype	Cookie Process Tags Tag set #1	CocoNummies data
1	Chocolate Chips	Analog	QuickStart\ChocChips	0
2	Coconut	Analog	QuickStart\Coconut	80
3	Batter Base	Analog	QuickStart\BatterBase	20
4	Chocolate Coating	Digital	QuickStart\Coating	1
5	Cookie Name	String	QuickStart\Name	"CocoNummies"

1 Type a data value for each ingredient.

Step 5 ■ Create a recipe unit

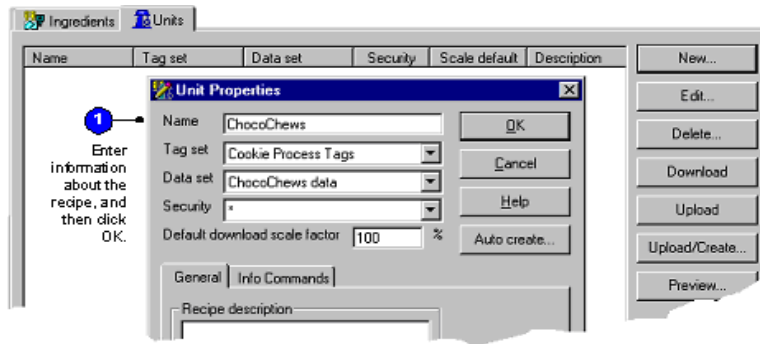
A RecipePro recipe unit links any tag set, which specifies where to download each ingredient value, with any data set, which holds the value for each ingredient in a recipe.

1. In the RecipePro Editor, click the **Units** tab.
2. To create a new recipe unit for chewy chocolate cookies, click the **New** button.



3. In the Unit Properties window, make these entries, and then click OK.

- Name - ChocoChews
- Tag set - Cookie Process Tags
- Data set - ChocoChews data



4. To create a new recipe unit for chewy coconut cookies, click the **New** button.

5. In the Unit Properties window, type these entries, and then click OK.

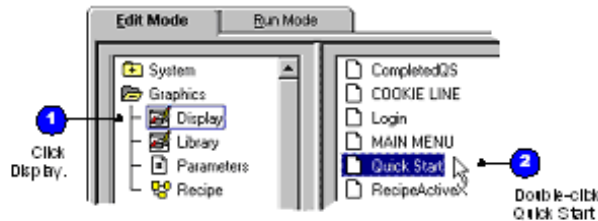
- Name - CocoNummies
- Tag set - Cookie Process Tags
- Data set - CocoNummies data

6. To save the recipe file, select **File > Save**. Then click the **Close** button.

Step 6 ■ Configure an Operator Control Panel

The RecipePro Operator Control Panel is an ActiveX control that you insert inside an RSView32 graphic display. How you configure the control's properties determines which RecipePro functions operators have available at runtime.

1. Open the graphic display named Quick Start.



2. Insert the RecipePro Operator Control Panel ActiveX control.

Use the ActiveX Toolbox to insert an ActiveX control, or from the RSView32 menu, select **Objects > ActiveX Control**.



3. To edit its properties, double-click the RecipePro Operator Control Panel.

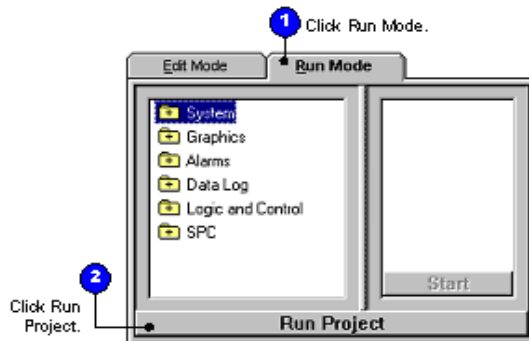
- In the Default Recipe Database File box, select **Quick Start**. In the Display area, select **Units**. Leave the other entries set to the defaults. Click OK.



- Save and close the graphic display.

Step 7 ■ Run your RecipePro project

- Run the RSVIEW32 RecipePro project.



- From the project main display, click **Quick Start Project**.
- On the RecipePro Operator Control Panel, select the **ChocoChews** recipe unit.
- Click the **Download** button. Notice the process values change in the hoppers for each ingredient.
- On the RecipePro Operator Control Panel, select the **CocoNummies** recipe unit.

6. Click the **Download** button. Notice the process values change in the hoppers for each ingredient.
7. On the RecipePro Operator Control Panel, change the Download Scale Factor to **50%**, and then click Download.
8. In the Mode box, select **Manual Entry**, and then click Download. Change several ingredient values, and then click Download again.
9. When you finish experimenting with your project, click the **Close** button. Stop the project and return to Edit Mode.

TIP

To check your results against a completed Quick Start project, click the **Show Finished Quick Start Display** button.

Getting the information you need

Using RSVIEW32 RecipePro online help

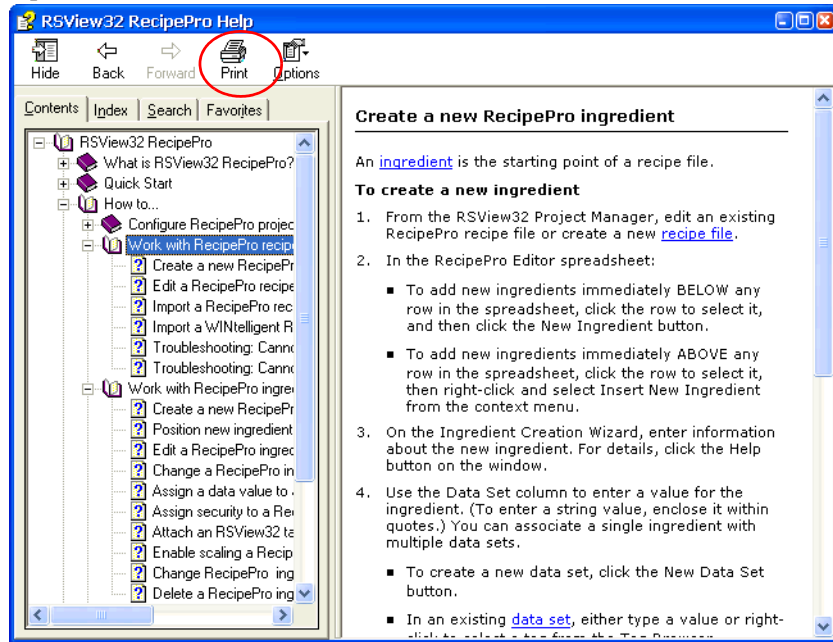
RSVIEW32 RecipePro online help provides overviews, reference information, and step-by-step procedures for working with all of the features in RSVIEW32 RecipePro. To open online help while running RSVIEW32 you can:

- click the Help button on any window
- on the RSVIEW32 menu bar, click Help>Contents.

Viewing and printing the help contents

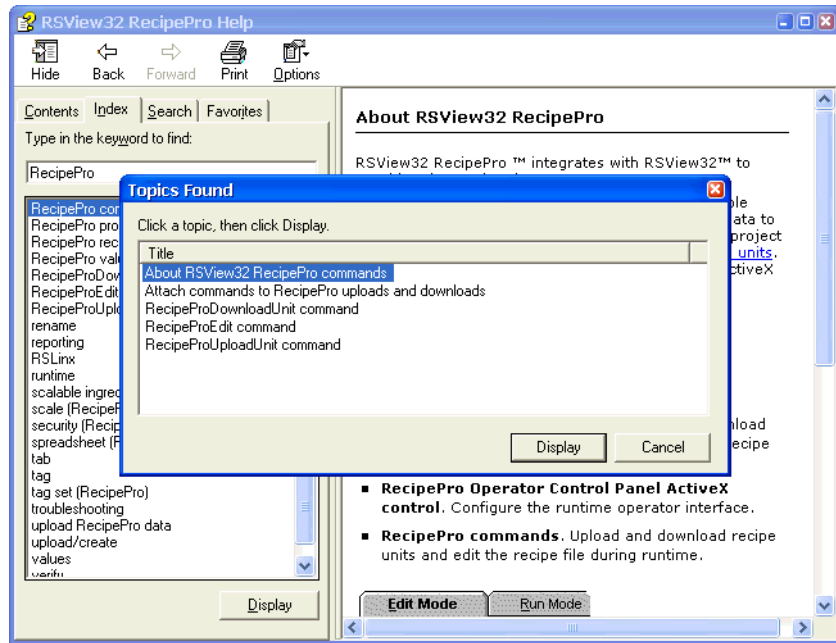
For an overview of the RSVIEW32 RecipePro help, click the Contents tab, and then double-click the RSVIEW32 RecipePro book.

To print a group of help topics, select a book from the Contents tab, and then click the Print button. All of the individual topics contained within that book will print.



Using the index

The help index is similar to an index in a book, listing keywords for topics in the help. To see the index, click the Index tab.



To see a topic, double-click the topic, or highlight the topic and click Display. If the index entry refers to more than one topic, the Topics Found box opens. Double-click a topic, or select a topic and click Display.

Finding RSVIEW32 RecipePro version information

To find the RSVIEW32 RecipePro version number and serial numbers, click Help>About RSVIEW32 and click the Add-ons button. Select RSVIEW32 RecipePro, and then click the Details button.

Exploring the RSView32 RecipePro sample project

Installing RSView32 RecipePro also installs a sample project that you can use to learn how to customize your own applications. To see a RecipePro project in action, and to get ideas for building your own RecipePro application in RSView32, tour the RSView32 RecipePro Sample project. In the directory where you installed RSView32 RecipePro, look for this file: RecipePro Sample.rsv.

To step through configuring and running a simple RecipePro project on your own, follow the Quick Start steps found in Chapter 2 of this guide, or available in the RecipePro online help.

For more information

For information about RSView32, refer to the following publications.

Getting Results with RSView32

Rockwell Software
Publication ID: VW32-GR001E-
EN-E

Getting Results with RSView32 Active Display system

Rockwell Software
Publication ID: VW32AD-
GR001D-EN-E

RSView32 User's Guide

Rockwell Software
Publication ID: VW32-UM001E-
EN-E

Also available on the RSView32
installation CD-ROM and from the
Programs>Rockwell Soft-
ware>RSView32 menu.

If you have a web browser installed on your computer and a current Internet connection, you can find a wealth of information available on the Rockwell Software website. In RSView32, click Help>Rockwell Software on the Web, and select a home page to view.

Technical support

If you have a question about RSVIEW32 RecipePro, please consult this guide or the RSVIEW32 RecipePro online help. If you cannot find the answer, call Rockwell Software Technical Support: **440-646-3434**.

When you call, you should be at a computer running RSVIEW32 RecipePro and be prepared to give the following information:

- RSVIEW32 and RecipePro product version numbers
- hardware you are using
- exact wording of any messages that appeared on the screen
- description of what happened when the problem occurred
- description of how you tried to solve the problem

Index

A

ActiveX control
runtime ■ 8

C

Commands
RecipeProDownloadUnit ■ 9
commands ■ 9
Configure ■ 18
data set ■ 14
ingredients ■ 14
recipe file ■ 18
recipe unit ■ 19
RecipePro Operator Control Panel ■ 20
tag set ■ 12
Create
data set ■ 7

D

Data set
Create ■ 14
Documentation
RSView32 ■ 21
RSView32 Active Display system ■ 24
RSView32 RecipePro online help ■ 21
Download
runtime ■ 9

E

Editors
RecipePro Setup ■ 6

F

Full Install ■ 3

H

Hardware
Recommended requirements ■ 1
Help
online ■ 21
serial numbers ■ 23
version information ■ 23

I

Import
WINtelligent Recipe files ■ 6
Index
online help ■ 21
Ingredients
Attach RSView32 tags ■ 13
Quick Start ■ 9
Installing RSView32 RecipePro
Controls Only ■ 3
Full Install ■ 3
Installation steps ■ 3
with RSView32 Active Display System ■ 2
Internet settings ■ 3

M

Manual Entry ■ 9
Memory
Recommended requirements ■ 1

O

Online help
index ■ 23
print ■ 22
serial numbers ■ 23
version information ■ 23
Operator Control Panel
Operator Control Panel ■ 8

Q

Quick start

- create a data set ■ 14
- Create a new recipe file ■ 10
- Create a recipe unit ■ 17
- Create a tag set ■ 12
- Create ingredients ■ 10

R

Recipe unit

- Create ■ 17

RecipePro commands

- RecipeProEdit ■ 9
- RecipeProUploadUnit ■ 9

RecipePro Operator Control Panel

- Configure ■ 18
- runtime ■ 18

RSView32 RecipePro

- ActiveX control ■ 3
- commands ■ 6
- Installing ■ 9
- online help ■ 21
- sample project ■ 24

Runtime

- ActiveX control
 - recipePro Operator Control Panel ■ 8

runtime ■ 8

S

Sample project ■ 9

Scaling

- during runtime ■ 6

Security ■ 8

Software

- operating system ■ 1

T

Tag set

- Create ■ 12

U

Upload

- runtime ■ 6

W

WINtelligent Recipe ■ 6