



FactoryTalk[®]

Remote Access[™]

Advancing support capabilities and expanding expertise through secure remote connectivity





Remote access value drivers for OEMs & System Integrators (SIs)

Enabling the next generation of smart machines



Improve response time

by leveraging new support and troubleshooting tools



Cost savings

by reducing travel and other expenses



Maximize productivity

by fast-tracking fixes with quick on-demand response times



New revenue streams

by creating new and enhanced service contracts and as-a-service business models



Remote access value drivers for End Users

A core component of The Connected Enterprise[®]



Improve uptime

by having instant access that results in faster issue resolution



Increase efficiency

by leveraging real-time collaboration tools and flexibility with OEMs and SIs as an extension of your workforce



Increase security

by adhering to IT standards and enabling restricted access



Better visibility to analytics

by harnessing machine performance data

Overview

The **FactoryTalk Remote Access solution** delivers secure communications over the internet to enable performance and security for on-demand remote assistance, installation, programming, troubleshooting, and maintenance of any remote automation system and application.

- **FactoryTalk Remote Access Manager**

Streamlined device and user management

- **Remote Access Endpoints**

A growing list of remote access endpoints that enable secure connectivity to automation equipment.

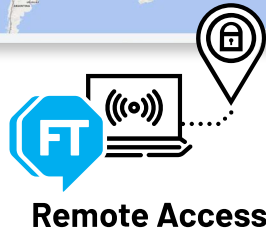
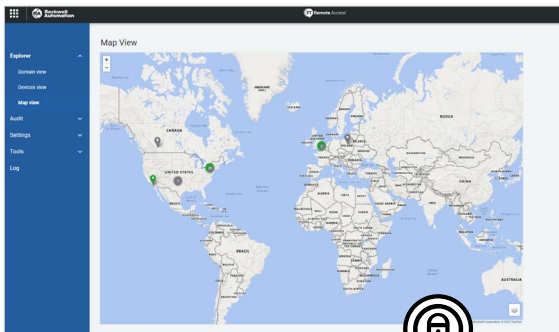
- **FactoryTalk Remote Access Runtime**
 - Secure connectivity to any compatible PC
- **Stratix® 4300 Remote Access™ Router**
 - Secure connectivity to automation equipment
- **Remote Access Ready**
 - Products that ship with a FactoryTalk Remote Access Runtime license included



STREAMLINED DEVICE AND USER MANAGEMENT

The **FactoryTalk Remote Access Manager** is cloud-based software, available in FactoryTalk Hub™, which streamlines the management of the entire remote access solution in a single place for your organization.

The FactoryTalk Remote Access Manager provides the security and functionality needed to manage users and devices through an easy-to-use web-client based software.



● Flexible User Management

Manage, create and set permissions for permanent and temporary users within your organization. Invite users, as needed, into your remote access domain to support cross business collaboration extending your workforce and capabilities.

● Manage and Configure Devices

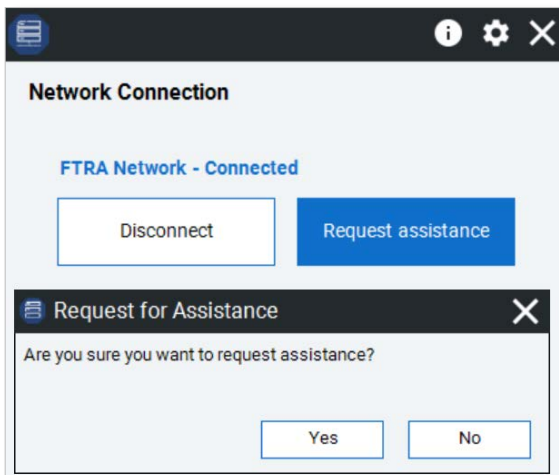
Set up, configure and manage your remote access endpoints, including the Stratix 4300, all in one place. The software enables you to configure settings, control access, view system information, set permissions based on device, providing you full control over your solution.

● Multiple Device Views

There are multiple options for viewing and organizing your devices using the domain view, device view and map view. Leverage folders to organize your assets that belong to your domain in a way that makes sense for your organization.

INHERENT FLEXIBILITY

There is a growing list of options for secure remote connectivity that support evolving requirements, enabling your business to be innovative when selecting the best option for your applications.



- **Runtime Software**

The FactoryTalk Remote Access Runtime software is an installable application that enables any compatible Windows or Linux PC to be a remote access endpoint.

- **Remote Access Ready**

The portfolio of Remote Access Ready endpoints is growing, which provides your organization options when it comes to selecting the best remote access endpoint for your application.

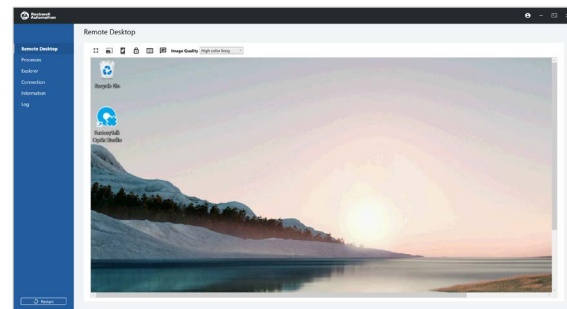
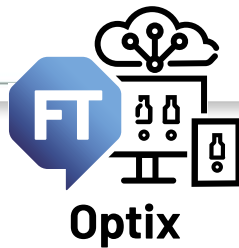
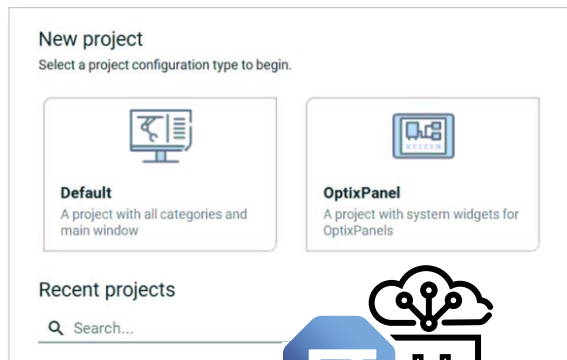
- **Third-Party Compatibility**

FactoryTalk Remote Access breaks down connectivity barriers with third-party compatibility, providing the ability to integrate with any automation system.

ENHANCE PRODUCTIVITY

FactoryTalk Remote Access

includes built in collaboration features that boost productivity and resolution time.



- **FactoryTalk® Optix™ Integration**

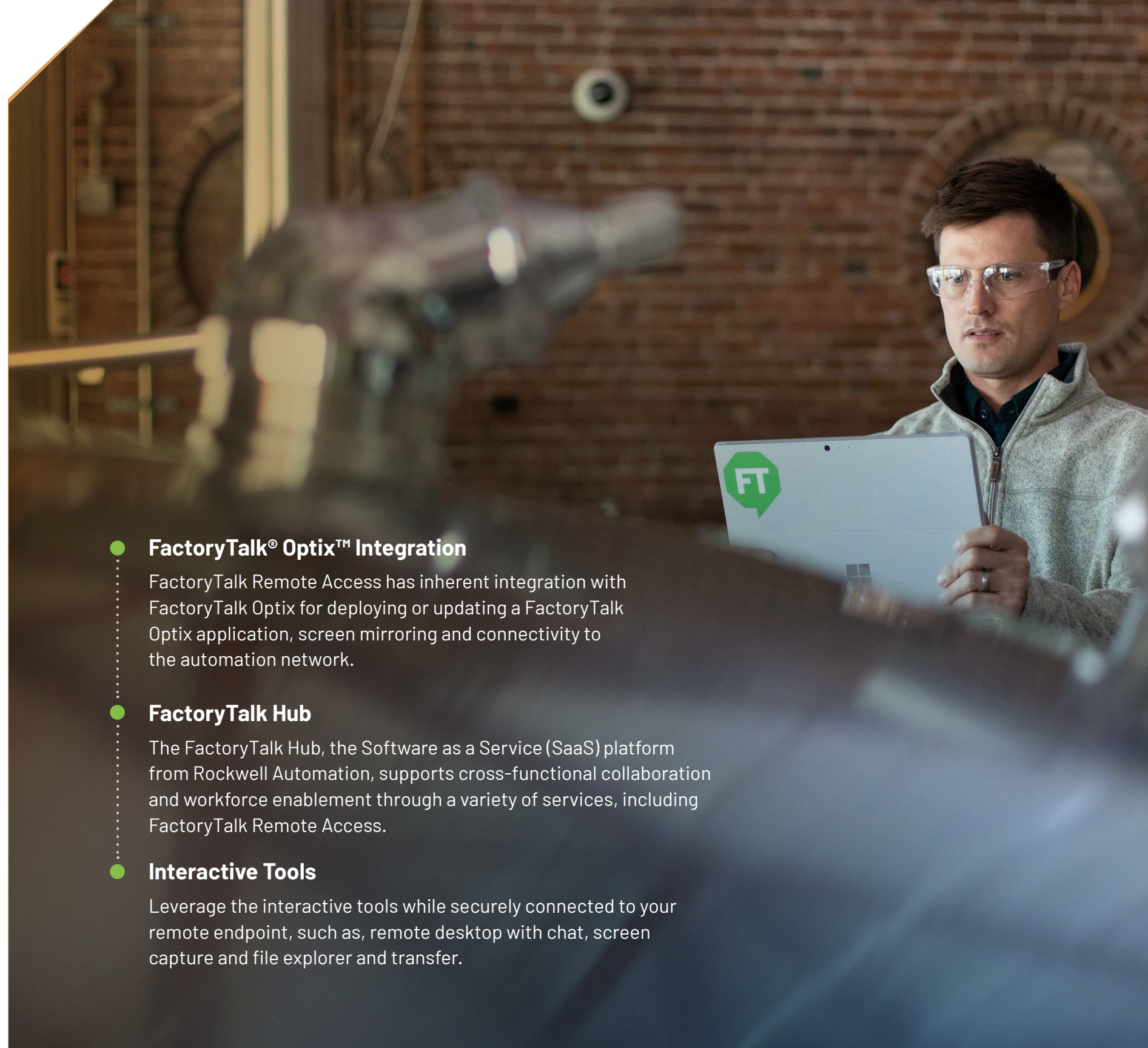
FactoryTalk Remote Access has inherent integration with FactoryTalk Optix for deploying or updating a FactoryTalk Optix application, screen mirroring and connectivity to the automation network.

- **FactoryTalk Hub**

The FactoryTalk Hub, the Software as a Service (SaaS) platform from Rockwell Automation, supports cross-functional collaboration and workforce enablement through a variety of services, including FactoryTalk Remote Access.

- **Interactive Tools**

Leverage the interactive tools while securely connected to your remote endpoint, such as, remote desktop with chat, screen capture and file explorer and transfer.



BUILT-IN SECURITY

FactoryTalk Remote Access has fundamental security features and functionality that follow IT standards and policies.



Integrated Firewall

Configure permission policies for traffic over the VPN tunnel



User Group Management

Create roles-based permanent and temporary users and assign to a specific group



Audits and Logging

Logging of remote connections and administrative activities performed by who, on what and for how long



Asset Management

Organize remote machines in a hierarchical form and establish user group management



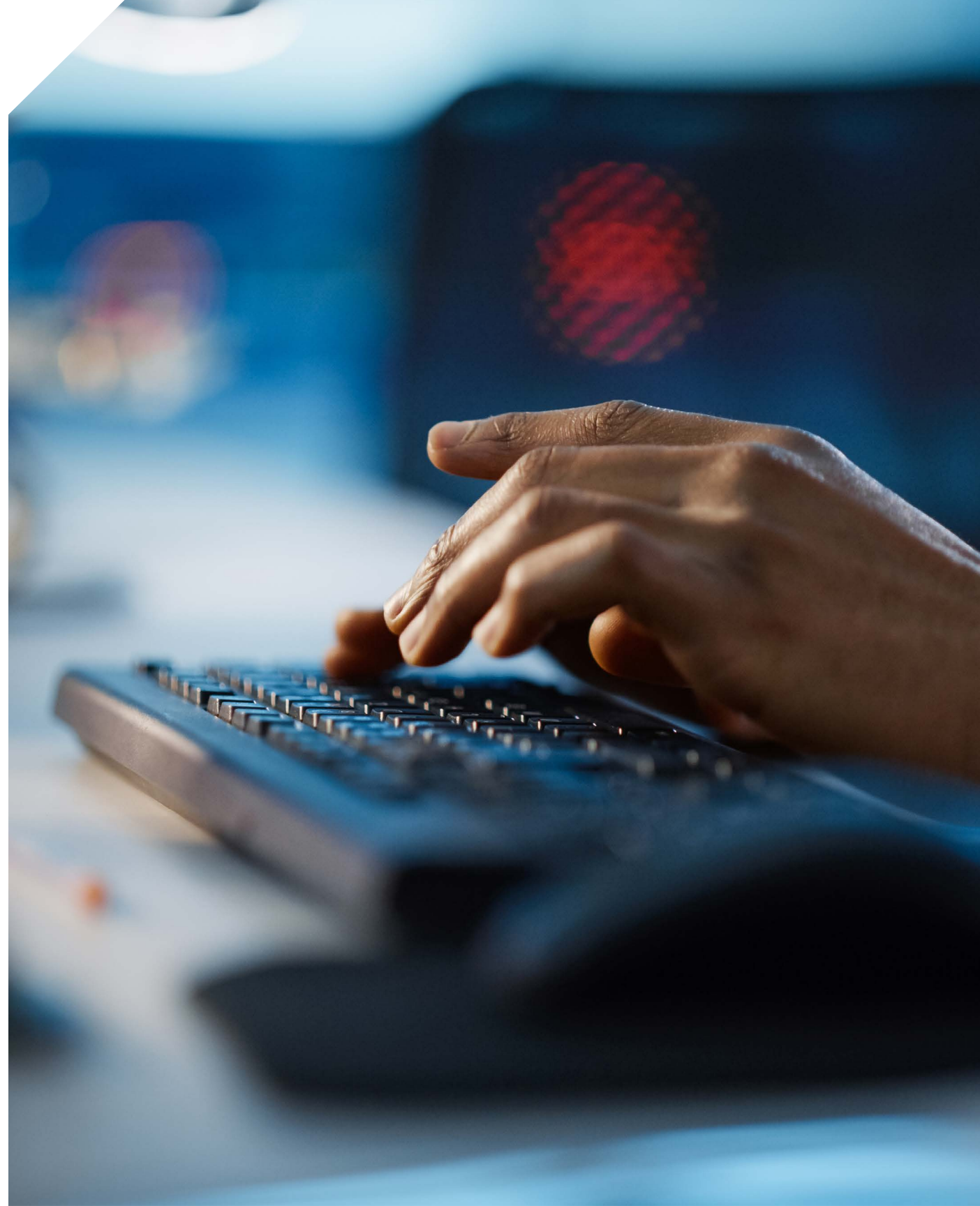
Authentication

Confirming only trusted devices may be registered to the account domain



Physical Enablement

No remote connectivity can occur without physical enablement when using the Stratix 4300 Remote Access Router



To learn more about remote access, contact a Rockwell Automation sales representative or visit: www.rockwellautomation.com.



Connect with us.    

rockwellautomation.com — expanding **human possibility**[®]

AMERICAS: Rockwell Automation, 1201 South Second Street, Milwaukee, WI 53204-2496 USA, Tel: (1) 414.382.2000

EUROPE/MIDDLE EAST/AFRICA: Rockwell Automation NV, Pegasus Park, De Kleetlaan 12a, 1831 Diegem, Belgium, Tel: (32) 2663 0600

ASIA PACIFIC: Rockwell Automation SEA Pte Ltd, 2 Corporation Road, #04-05, Main Lobby, Corporation Place, Singapore 618494, Tel: (65) 6510 6608

UNITED KINGDOM: Rockwell Automation Ltd., Pitfield, Kiln Farm, Milton Keynes, MK11 3DR, United Kingdom, Tel: (44)(1908) 838-800

Allen-Bradley, expanding human possibility, FactoryTalk, FactoryTalk Hub, FactoryTalk Optix, FactoryTalk Remote Access, Stratix 4300 Remote Access Router and The Connected Enterprise are trademarks of Rockwell Automation, Inc. Trademarks not belonging to Rockwell Automation are property of their respective companies.

Publication FTALK-BR014A-EN-P - March 2024

Copyright © 2024 Rockwell Automation, Inc. All Rights Reserved. Printed in USA.