

APPLICATION NOTE

How to Configure Language Packs to work with the MagneMotion Configuration Utility

Purpose

The MagneMotion Configurator Tool (for MagneMover LITE or QuickStick Systems) was designed for use with the United States English Language Pack for Microsoft® Windows. This document describes necessary changes to other language packs to run the Configuration Utility.

Introduction

Differences in the way numbers are represented in different Microsoft® Windows Language Packs change the way the MagneMotion Configurator allows numerical inputs and displays numbers. The tool was designed to work with Microsoft® Windows 7, SP1 or later running the United States English Language Pack. In this language pack, a period “.” is used as the decimal symbol. For example, the number three and one half is represented as “3.5”.

Impact on Configuration Utility Functionality

The MagneMotion Configurator uses the number of motors on a Path and the downstream gap to calculate the overall Path lengths. If a different language pack uses a comma “,” instead of a period “.” as the decimal symbol, the Configurator will display the wrong Path length. Figure 1 is an example of the Configuration Utility displaying a very large Path length, which is incorrect.

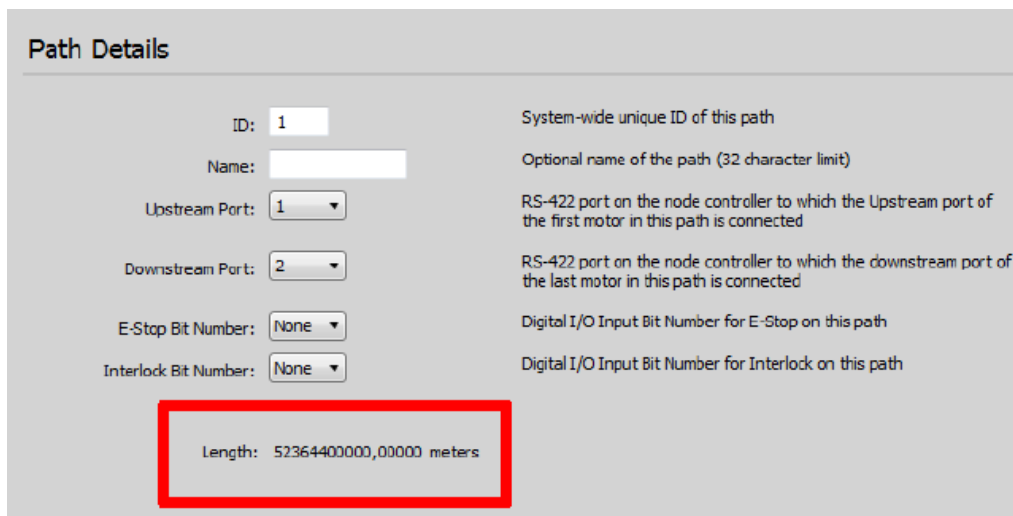


Figure 1: Example of Incorrectly Displayed Path Length

Solution

The recommended solution to use other language packs with the Configurator involves changing the decimal symbol of the language pack to a period “.”.

1. Locate the Region and Language settings either by searching the Windows Start Menu for “Region and Language” as shown in Figure 2, or navigate to the Control Panel, select “Clock, Language, and Region” and Select “Region and Language” as shown in Figure 3 and Figure 4.

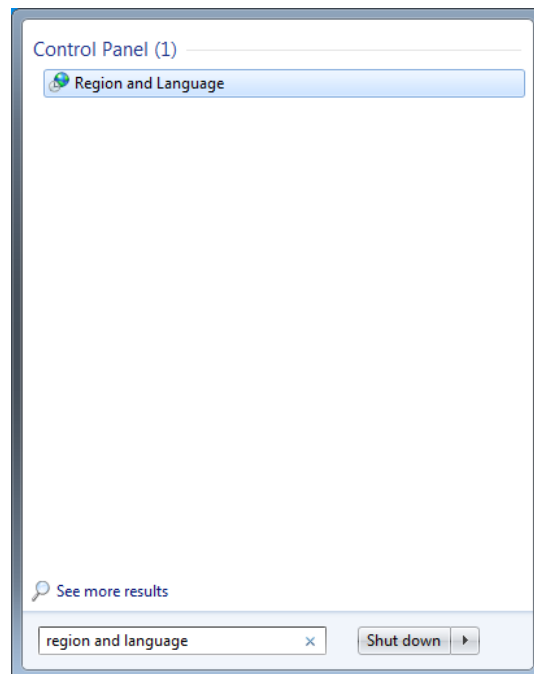


Figure 2: Search Start Menu for Region and Language

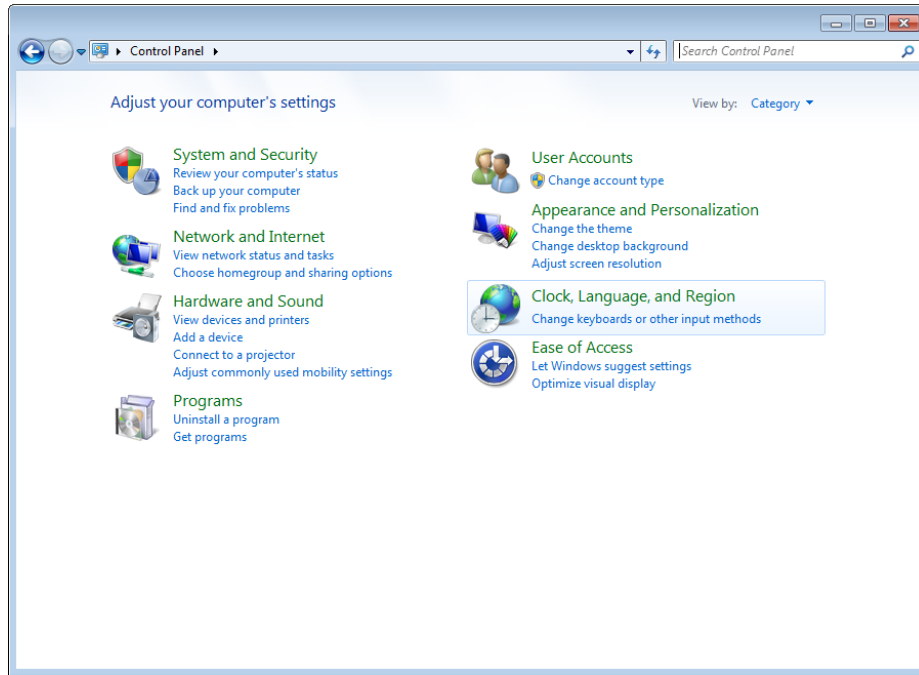


Figure 3: Open the Control Panel, Select "Clock, Language, and Region"

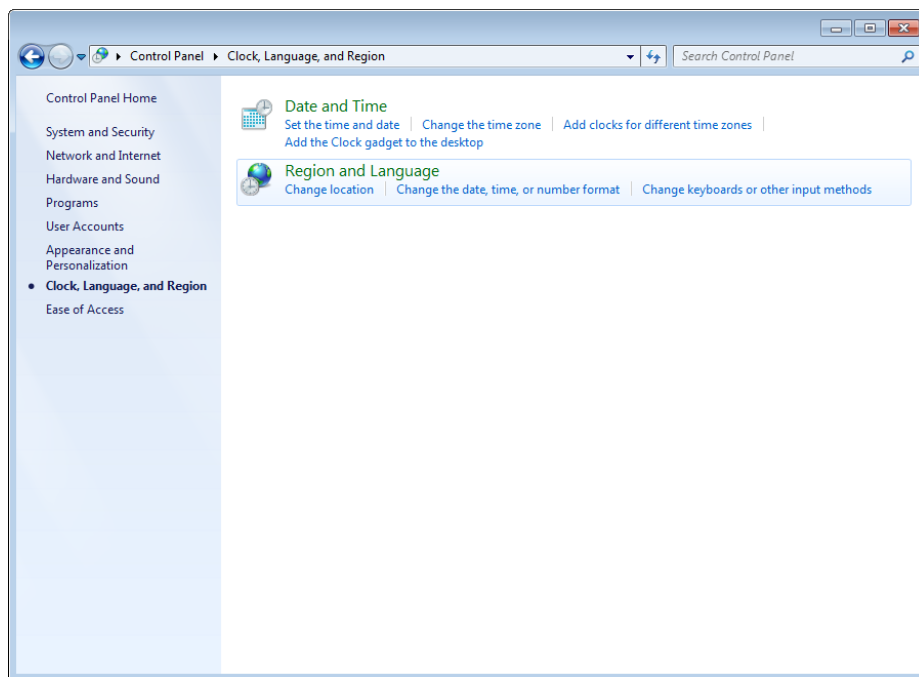


Figure 4: Select "Region and Language"

2. In the Region and Language setting, select “Additional Settings” as shown in Figure 5.

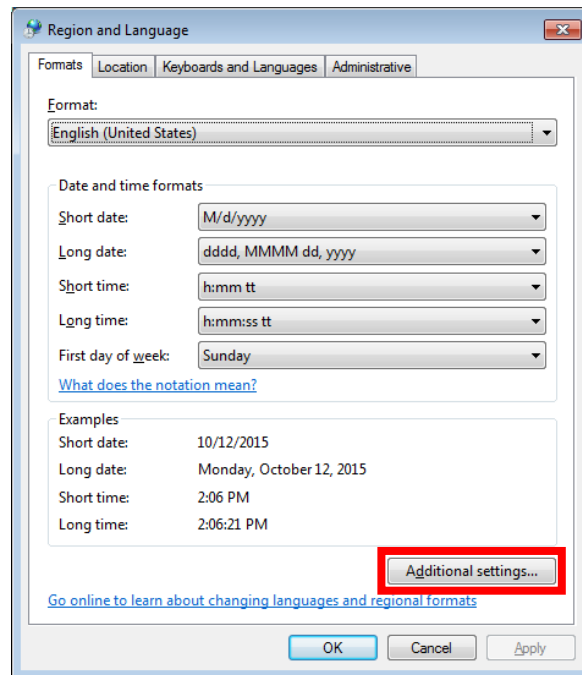


Figure 5: Region and Language Settings

3. Change the “Decimal Symbol” from a comma “,” to a period “.” as shown in Figure 6.

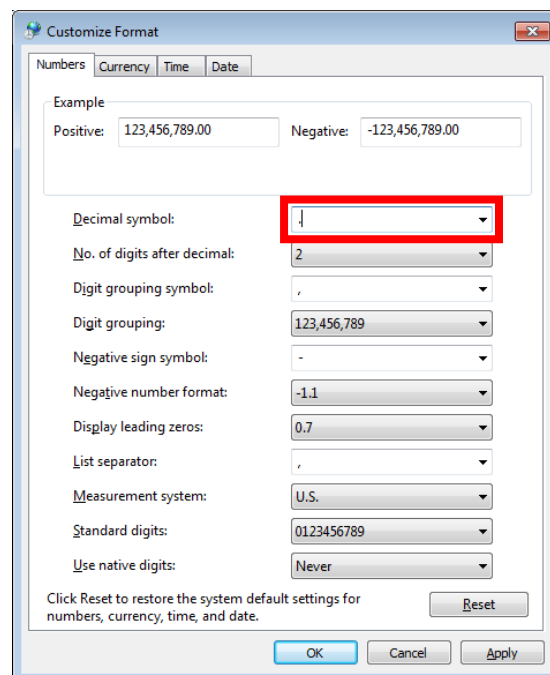


Figure 6: Change the Decimal Symbol to a period "."

TECHNICAL SUPPORT NOTICE

990000749

Rev. A

MMI-AT025A-EN-P



4. In the “Customize Format” window, select “Apply” as shown in Figure 7.

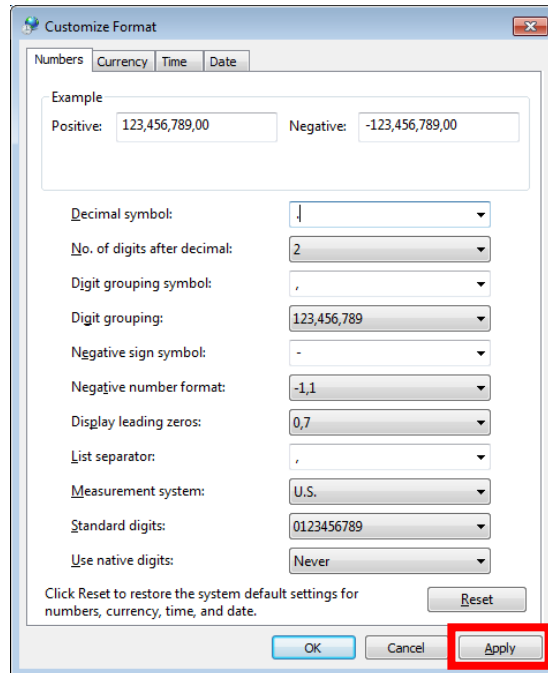


Figure 7: Select Apply

5. In the “Customize Format” window, select “OK” as shown in Figure 8

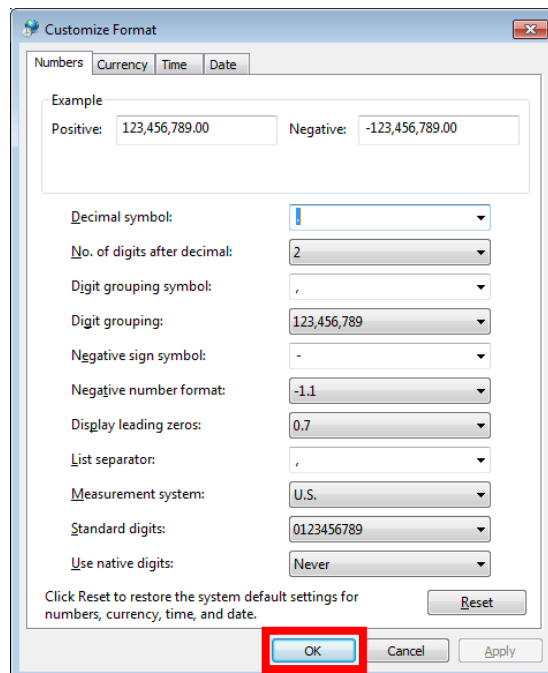


Figure 8: Select OK

TECHNICAL SUPPORT NOTICE

990000749

Rev. A

MMI-AT025A-EN-P



6. In the “Region and Language” window, select “Apply” as shown in Figure 8.

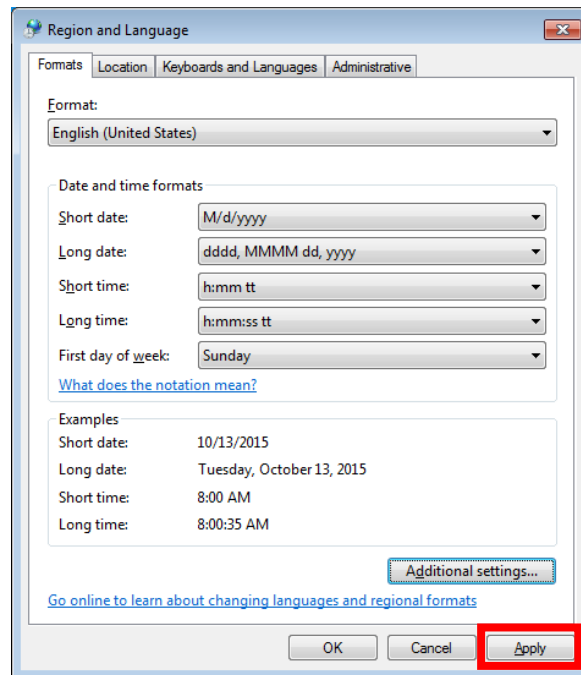


Figure 9: Select Apply

7. In the “Region and Language” window, select “OK” as shown in Figure 10.

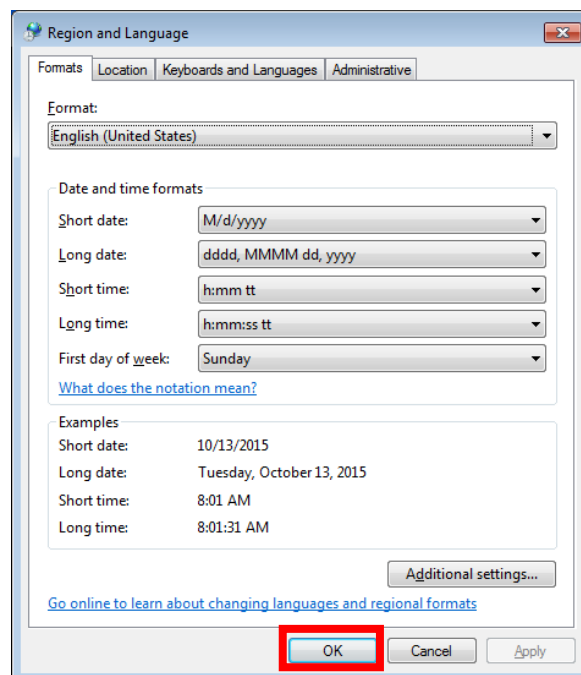


Figure 10: Select OK

TECHNICAL SUPPORT NOTICE

990000749

Rev. A

MMI-AT025A-EN-P



After applying changes to the Language Pack settings, it may be necessary to close and re-open the Configurator for the changes to take effect.

To revert the settings back to your normal language pack, you can follow the same procedure, but replace the period “.” with your normal decimal symbol, or select “Reset” in the “Additional Settings” window.

Summary

This document presents a solution for issues with the MagneMotion Configurator Tool caused by decimal symbols used by other Microsoft® Windows Language Packs. This solution is to be followed until MMI releases a new version of the tool to support other decimal symbols.

Related Documents:

990000558 – Manual, MagneMover LITE Configurator

990000559 – Manual, QuickStick Configurator

More Information

MagneMotion Website: www.magnemotion.com

Questions & Comments: www.magnemotion.com/about-magnemotion/contact.cfm

Revision History

Rev.	Change Description
------	--------------------

A	Initial release
---	-----------------

TECHNICAL SUPPORT NOTICE

990000749

Rev. A

MMI-AT025A-EN-P

