

Switching Between Languages on the HMI

This document explains how to use the Kinetix Accelerator Language Switching application. The application file contains the translated languages imported into the RSView ME application under the associated language. By using this application, you can open the application in your language of choice on the HMI, or switch languages at runtime.

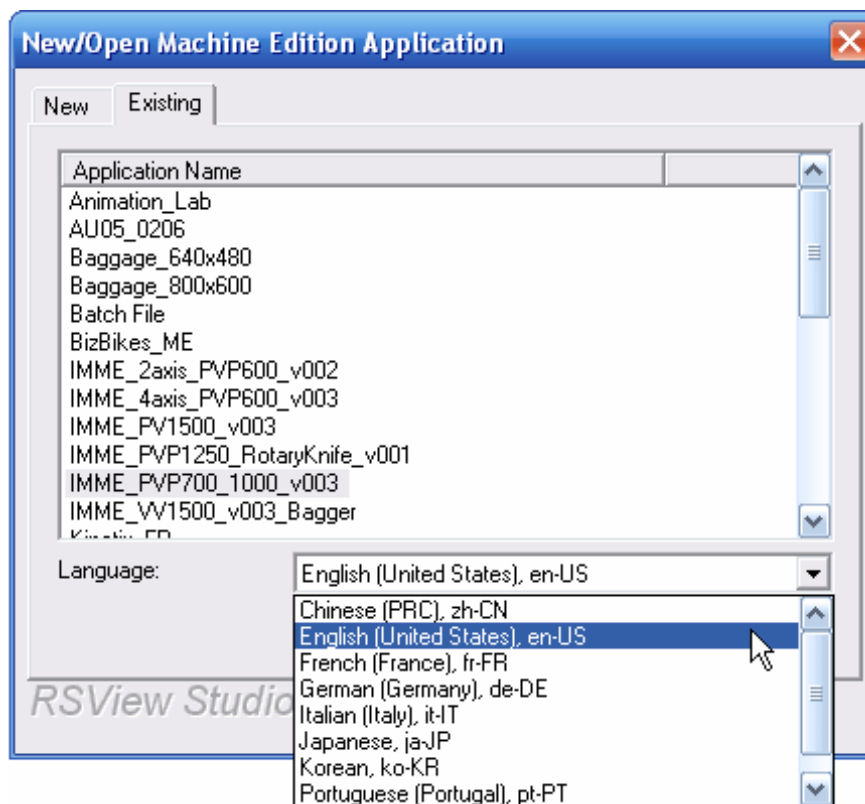
Creating the Multi-language Runtime Application

1. Load the Kinetix Accelerator Toolkit CD on your personal computer and click **Multi-language HMI App** from the main menu.
2. Double-click the Kinetix Accelerator Language Switching application file, **IMME_PVP700_1000_Languages_v003.apa**, to self-extract the file to the default location.
3. Open RSView ME Studio software.

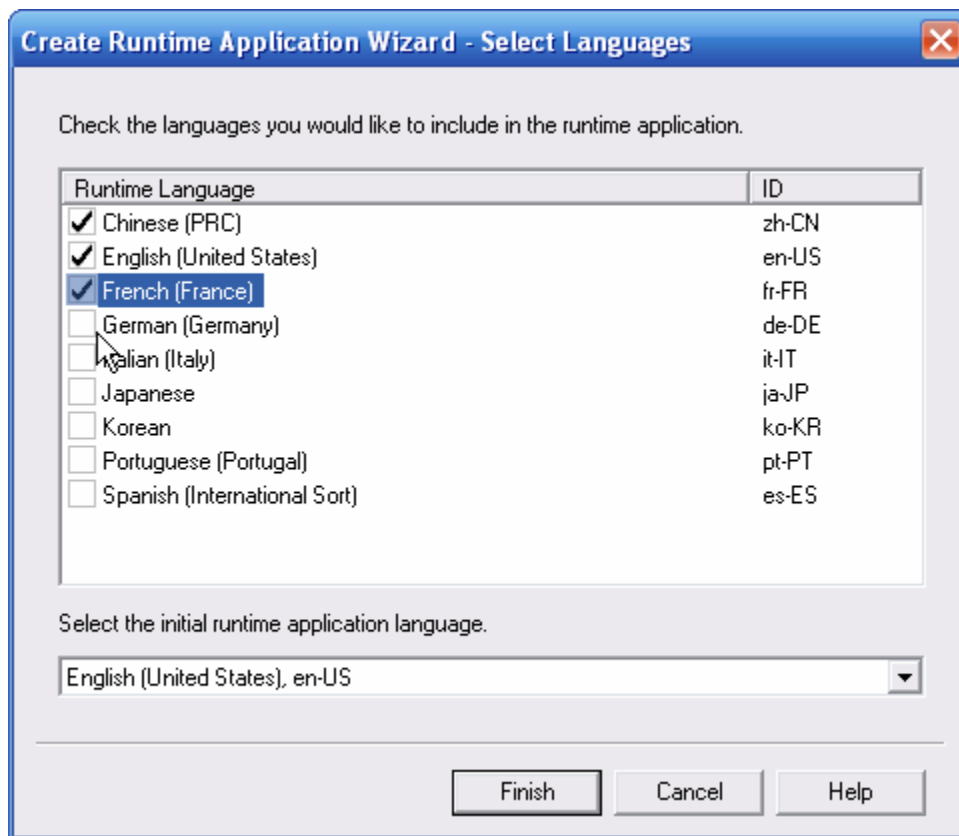
The New/Open Machine Edition Application window opens.

4. Select **IMME_PVP700_1000_Languages_v003**.
5. Choose a default language from the **Language:** pull-down menu.

This sets the default language for the application. You can always change it when you open the application again.



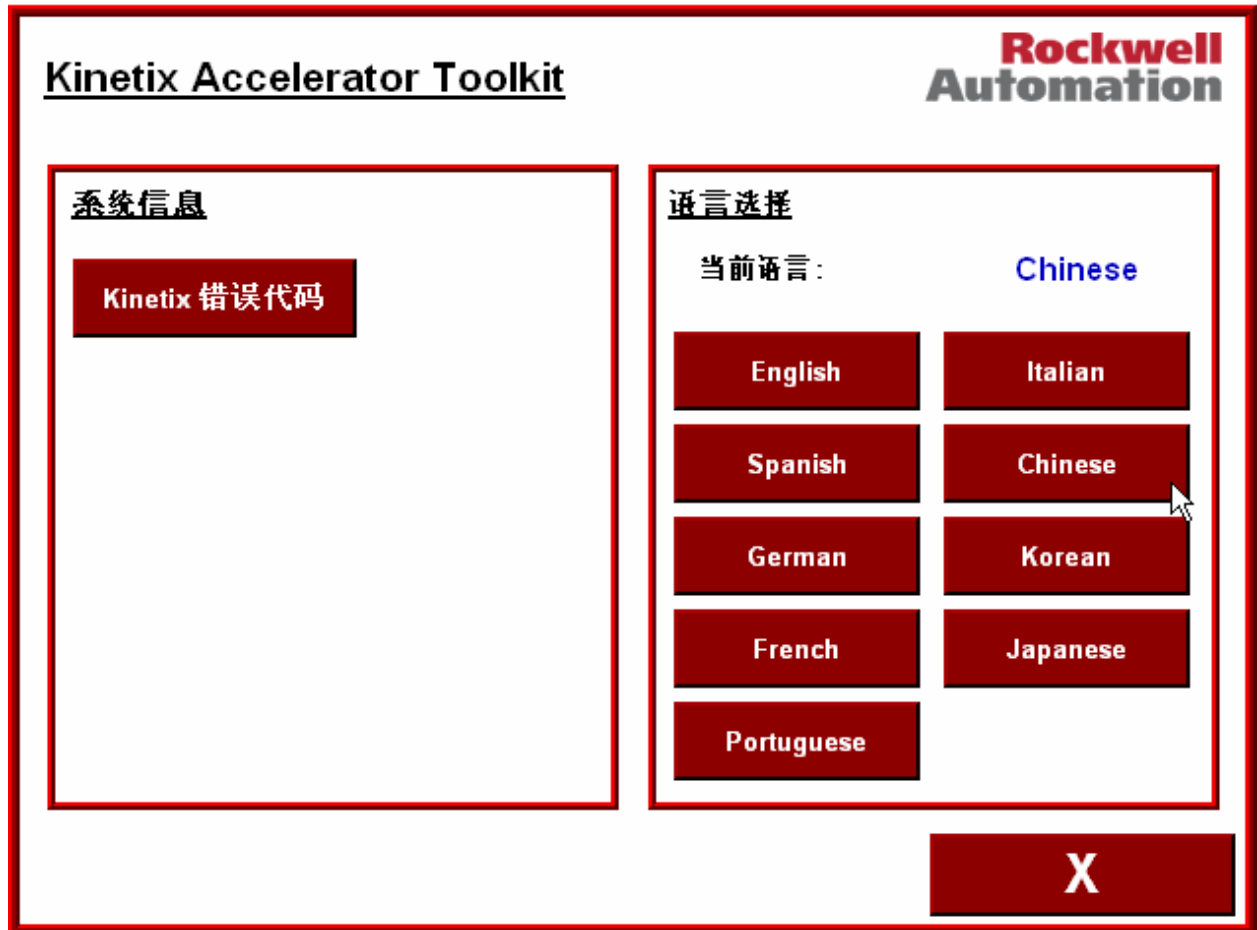
6. Use the **Create Runtime Application Wizard** to create your runtime application. Choose the other languages you would like included in the runtime application.



7. Click **Finish**.

8. Once the application is running, click the **Help** button on the main menu to go to the language switching screen.
9. Click the language button of choice to switch to that language.

Language switching only works for the languages checked when you created the runtime file (Create Runtime Application Wizard – Select Languages).



Other Considerations

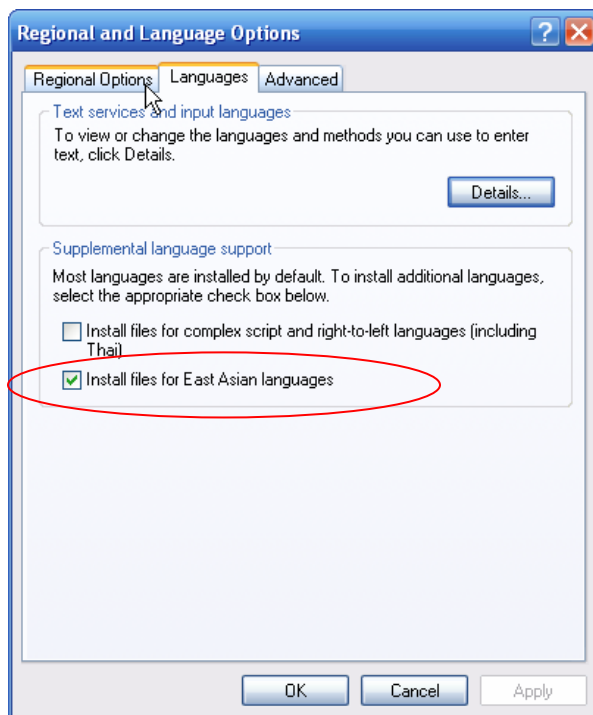
- If you only want to use one language, choose that language as your default language and remove references to the other languages.
- Remember to add any East Asian languages to your PC and the PanelView Plus/VersaView CE terminals. You will also need to link the languages to the Arial font in the PanelView Plus/VersaView CE terminals. See Language Support for East Asian Languages on page 4.
- If you make any changes to the application (for example, adding additional text), you will also have to make the same changes to the converted language. See Exporting and Importing Text Strings for Language Conversion on page 9.

Language Support for East-Asian Languages

To enable language support for East Asian languages (for example Chinese, Japanese, and Korean) the proper fonts must be installed on your PC and the PanelView Plus/VersaView CE terminals.

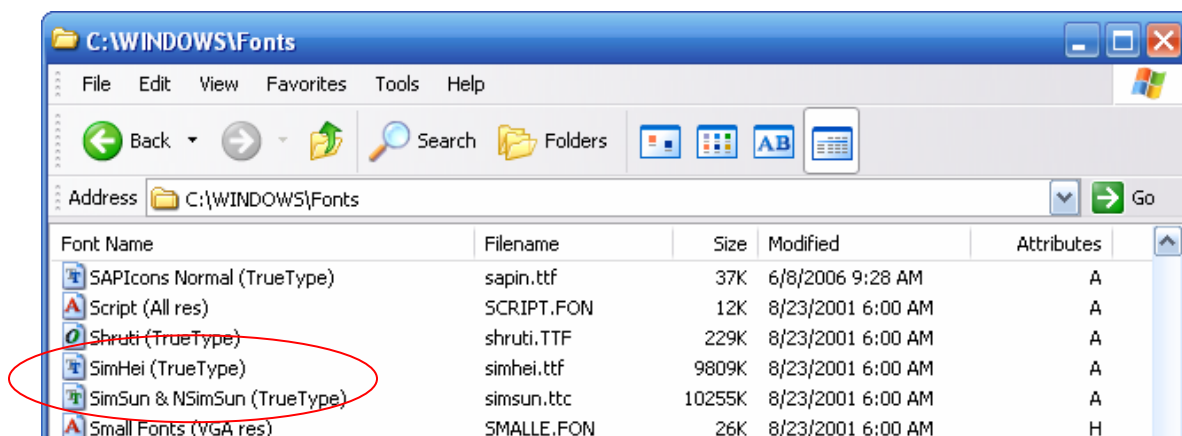
Installing East Asian Fonts on Your Personal Computer

1. From your PC, select Start > Control Panel > Regional and Language Options > Languages tab.
2. Check the **Install files for East Asian languages** check box.



3. Click **OK**.


The fonts are installed in the C:\WINDOWS\Fonts folder. For example, the **SimHei** and **SimSun** fonts are used for Chinese.



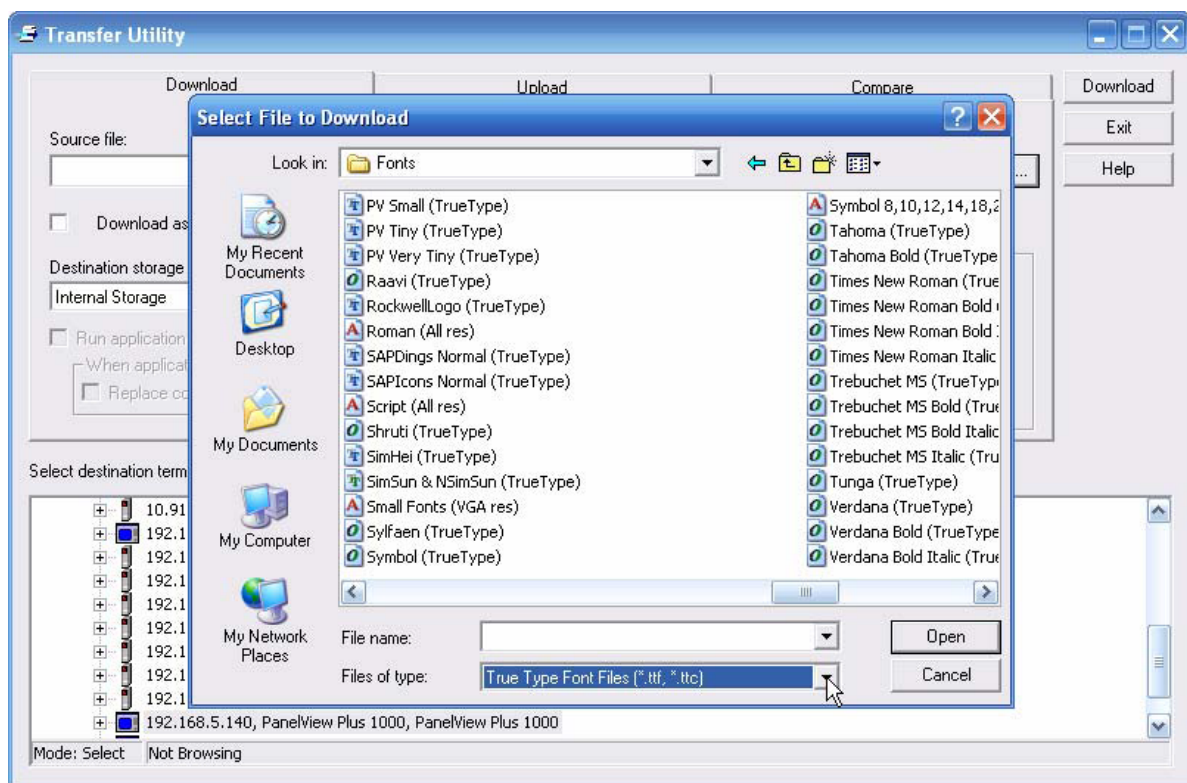
Installing East Asian Fonts on the HMI Terminals

The PanelView Plus/VersaView CE terminals are not pre-loaded with East Asian language fonts. As a result, you need to copy the desired fonts onto the terminals. Since the East Asian language font files are usually large in size (SimHei Chinese font file is 10MB), it is recommended that the terminals have at least 128MB RAM and a 128MB internal storage card.

You can either copy the fonts manually to \Storage Card\Fonts on the terminals using a compact flash card or use the Transfer Utility from the RSView Studio software.

1. From the Transfer Utility click the browse button .
2. Navigate to the C:\WINDOWS\Fonts folder, select **True Type Font Files** as the **Files of type**.
3. Select the desired font file and download to the HMI terminal.

The font files copy to \Storage Card\Fonts on the HMI terminal.

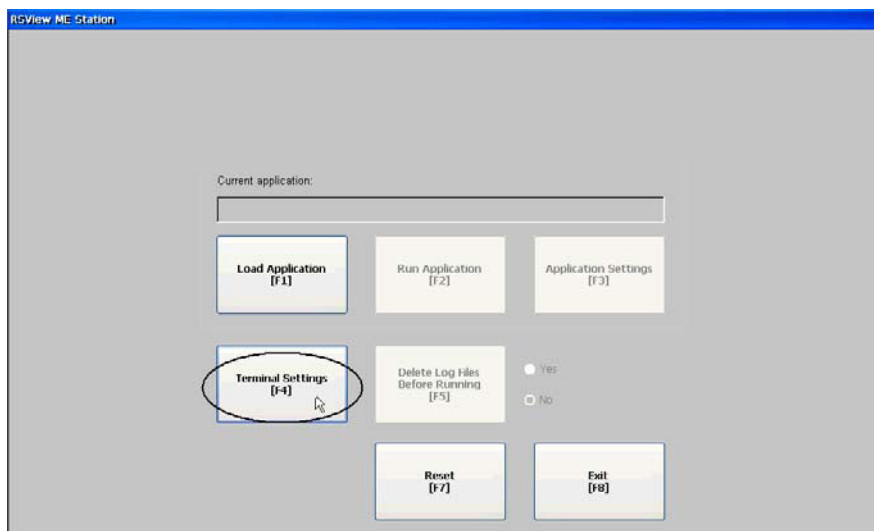


Once all the necessary fonts are installed, you will need to link the font used in development to the corresponding East Asian languages.

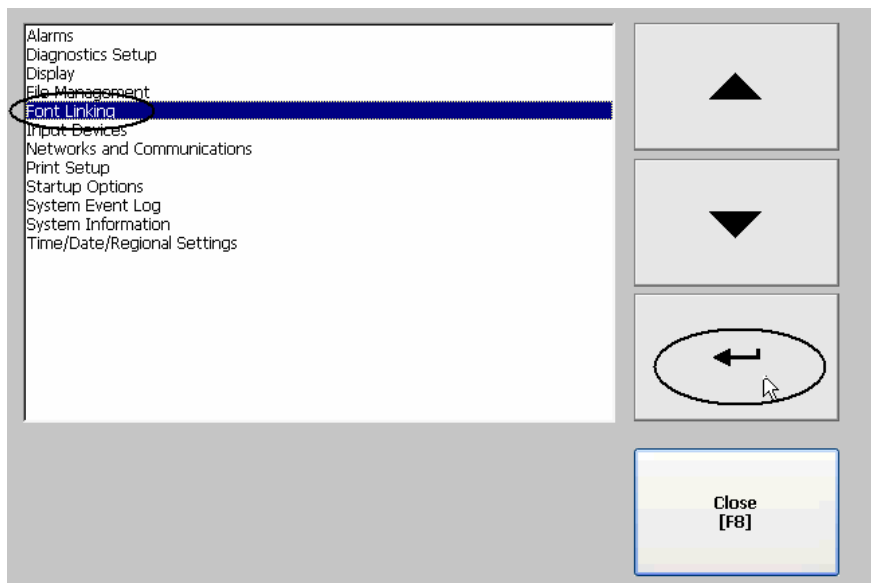
Linking Fonts

To view East Asian language fonts properly on the PanelView Plus/VersaView CE terminals, you need to link the fonts that the application was developed in, to the corresponding East Asian fonts. For example, the Kinetix Accelerator Toolkit language switching application was developed using the Arial font. You need to link the Arial font to the NSimSun Chinese font to view Chinese on the terminal.

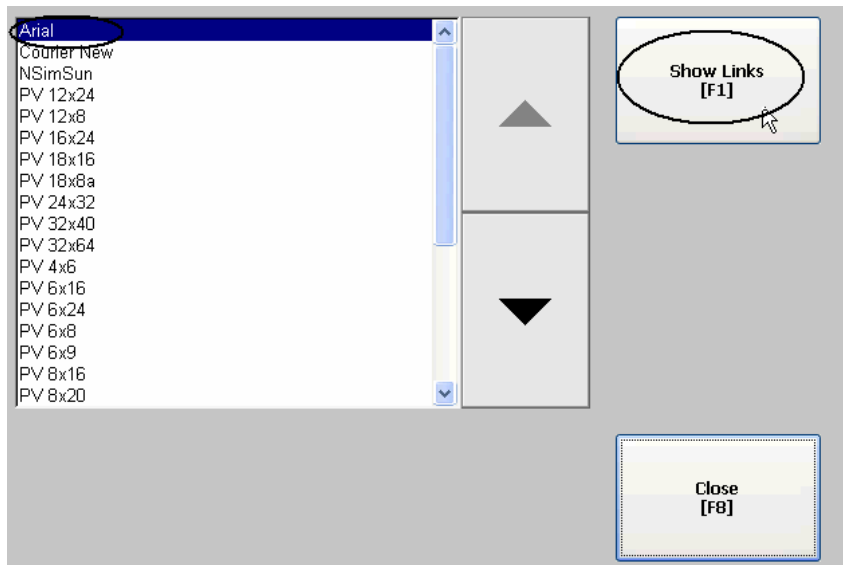
1. Click the **Terminal Settings [F4]** button on your PanelView Plus/VersaView CE terminal.



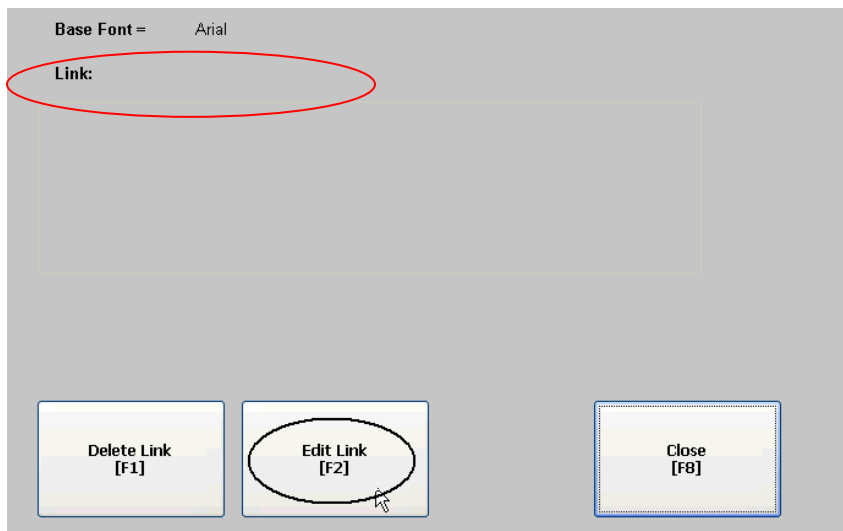
2. Select **Font Linking** and click .



3. Select the **Arial** font.
4. Click **Show Links [F1]**.

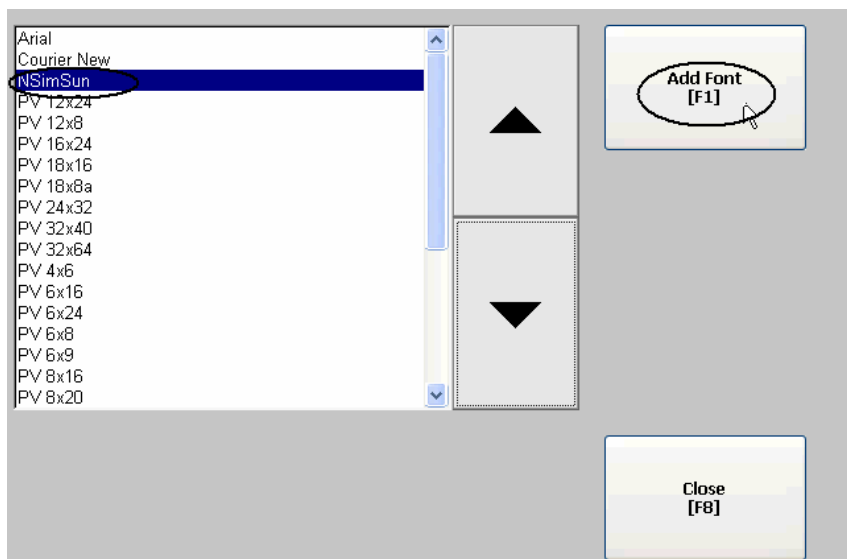


5. Click the **Edit Link [F2]** button.
- Notice that there is no link set for the Arial font.

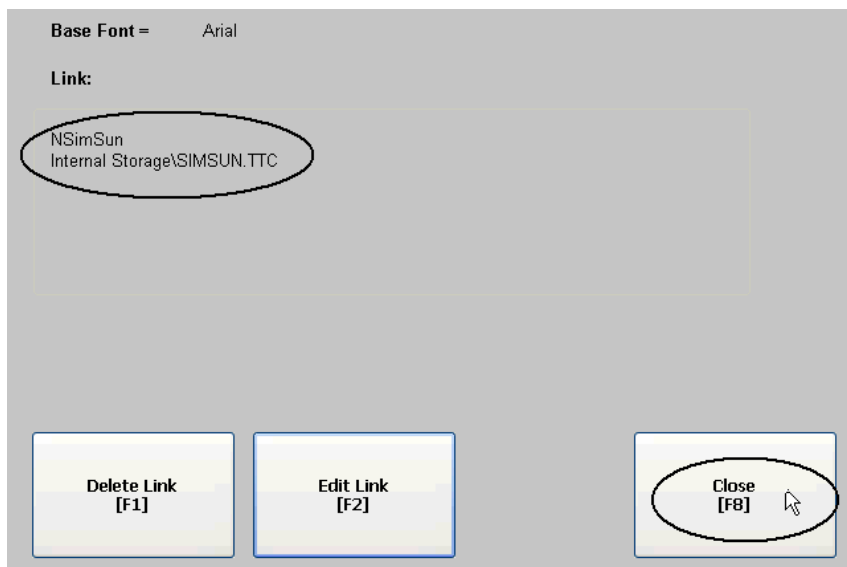


6. Select the **NSimSun** font.
7. Click the **Add Font [F1]** button.

You have linked the Arial font with the NSimSun font.



8. Click **Close [F8]**.



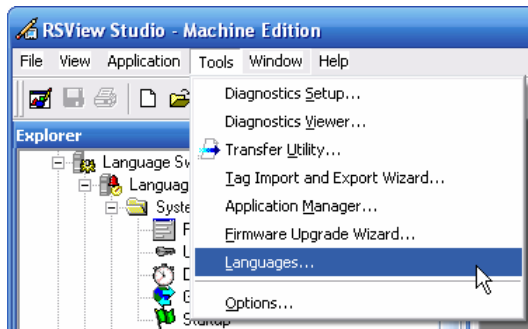
9. Click **Close [F8]** until you are back to the RSView ME Station configuration screen. You will now be able to view the East Asian font on your terminal.

Exporting and Importing Text Strings for Language Conversion

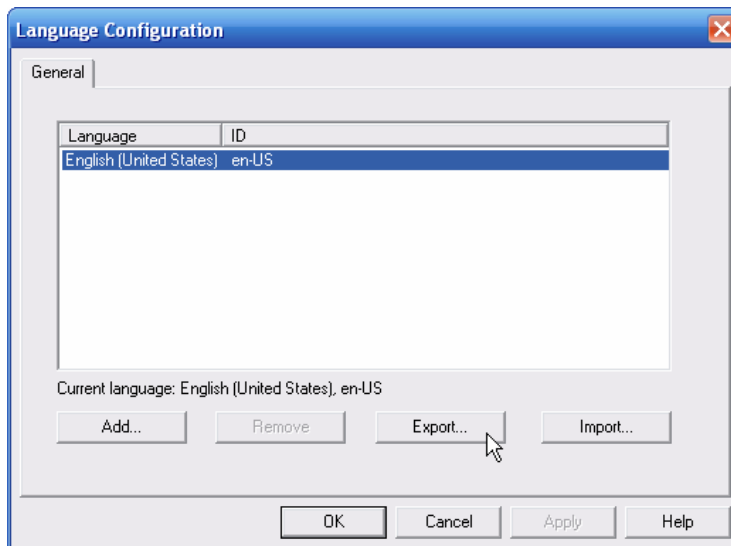
This section explains how to export text strings from your RSView ME application into an editable text file for translation into multiple languages. Once the file is translated, you can import the converted text strings back into the RSView ME application under the associated language.

Exporting Text Strings

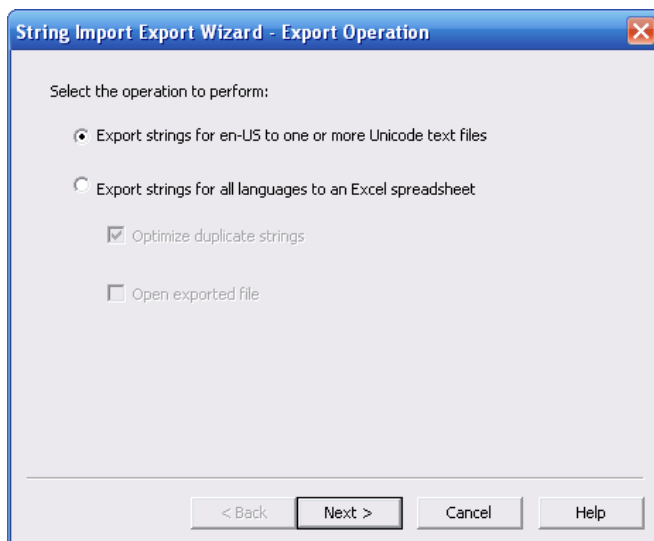
1. Open the Language Configuration editor from Tools > Languages.



2. Select **English (United States) en-US**.
3. Click the **Export...** button to export the text strings to an editable file.



4. Select **Export Strings for en-US to one or more Unicode test files**.
5. Click **Next**.

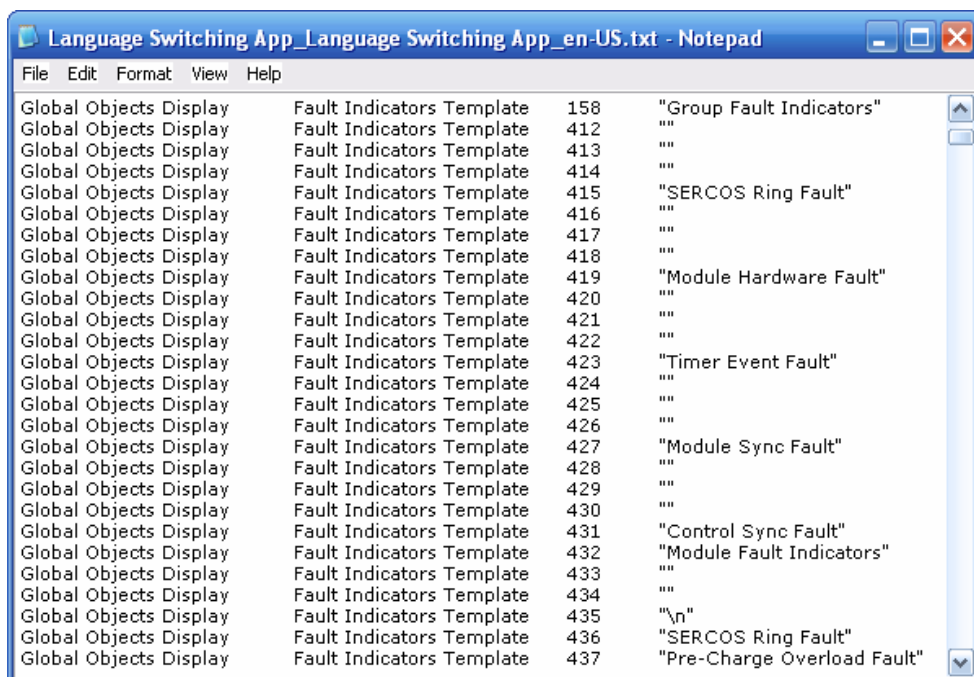


6. Select the file location or leave the default location and click **Finish** (default location = C:\Documents and Settings\All Users\Documents\RSView Enterprise\Strings).

Translating Text Strings

1. Navigate to the exported file created in the previous step and double-click the file.
In this example **Language Switching App_Language Switching App_en-US.txt** is the exported file.
2. Edit the text strings in Notepad or other text editing software.

Below is a section of the text file which shows the text for a Global Object that is used on the Axis Status window in the RSView ME application.



3. Translate the text strings into the language of choice.

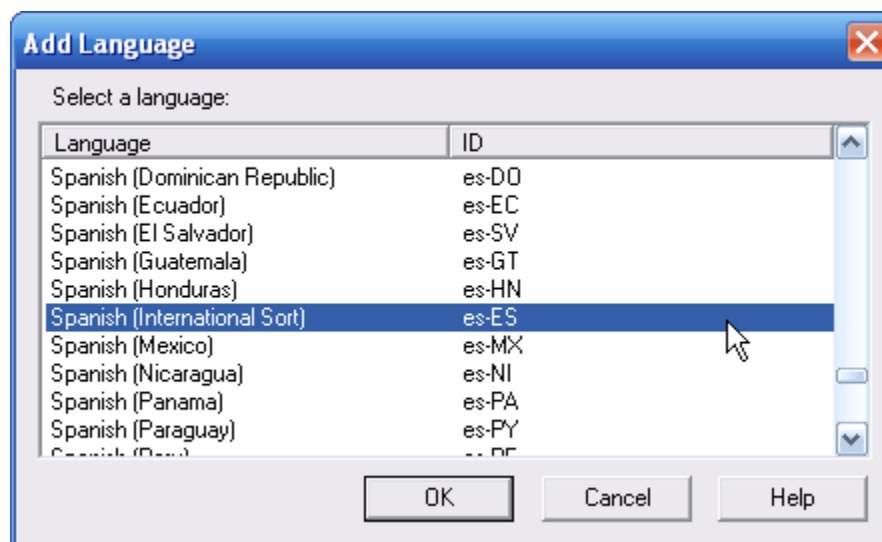
Translating text strings is not done by the language switching application. In this example, the text strings were translated into Spanish.

Global Objects Display	Fault Indicators Template	158	"Group Fault Indicators"
Global Objects Display	Fault Indicators Template	412	""
Global Objects Display	Fault Indicators Template	413	""
Global Objects Display	Fault Indicators Template	414	""
Global Objects Display	Fault Indicators Template	415	"SERCOS Ring Fault"
Global Objects Display	Fault Indicators Template	416	""
Global Objects Display	Fault Indicators Template	417	""
Global Objects Display	Fault Indicators Template	418	""
Global Objects Display	Fault Indicators Template	419	"Module Hardware Fault"
Global Objects Display	Fault Indicators Template	420	""
Global Objects Display	Fault Indicators Template	421	""
Global Objects Display	Fault Indicators Template	422	""
Global Objects Display	Fault Indicators Template	423	"Timer Event Fault"
Global Objects Display	Fault Indicators Template	424	""

Global Objects Display	Fault Indicators Template	158	"Indicadores de fallo de grupo"
Global Objects Display	Fault Indicators Template	412	""
Global Objects Display	Fault Indicators Template	413	""
Global Objects Display	Fault Indicators Template	414	""
Global Objects Display	Fault Indicators Template	415	"Fallo de anillo SERCOS"
Global Objects Display	Fault Indicators Template	416	""
Global Objects Display	Fault Indicators Template	417	""
Global Objects Display	Fault Indicators Template	418	""
Global Objects Display	Fault Indicators Template	419	"Fallo de hardware de módulo"
Global Objects Display	Fault Indicators Template	420	""
Global Objects Display	Fault Indicators Template	421	""
Global Objects Display	Fault Indicators Template	422	""
Global Objects Display	Fault Indicators Template	423	"Fallo de evento de temporizador"
Global Objects Display	Fault Indicators Template	424	""

Importing Text Strings

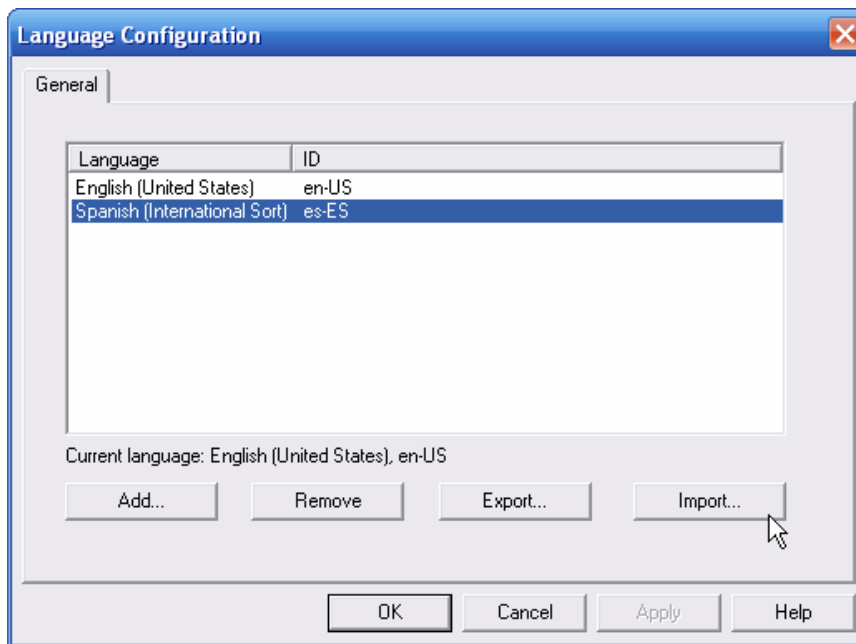
1. Open the **Language Configuration** editor again from the **Tools > Languages** menu.
2. Click the **Add...** button.
3. Select **Spanish (International Sort)**.
4. Click **OK**.



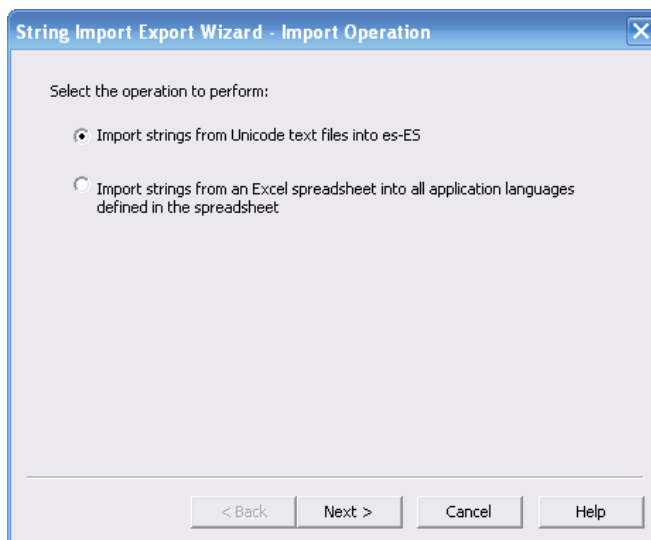
Spanish is added to the list of available languages.

Language	ID
English (United States)	en-US
Spanish (International Sort)	es-ES

5. Click **Apply**.
6. Select **Spanish (International Sort)** and click **Import...** to tie the language to the translated file.



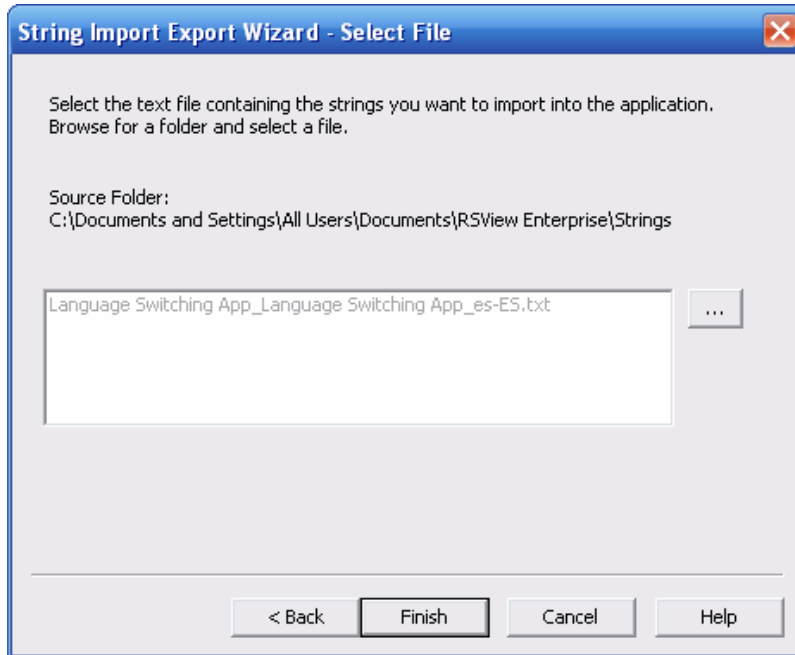
7. Click **Import strings from Unicode text files into es-ES**.
8. Click **Next**.



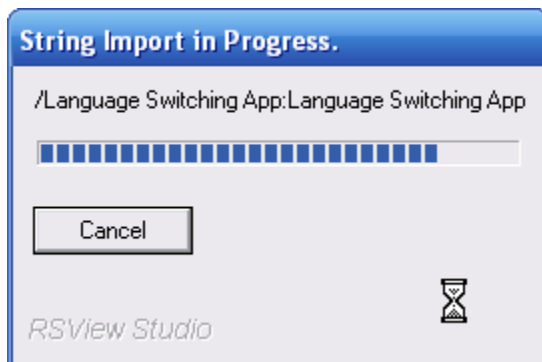
9. Select your translated file to import.

In this example, **Language Switching App_Language Switching App_es-ES.txt** is the file to import.

10. Click **Finish**.



The import process begins.



11. Correct any issues and import again.

Rockwell Automation Support

Rockwell Automation provides technical information on the Web to assist you in using its products. At <http://support.rockwellautomation.com>, you can find technical manuals, a knowledge base of FAQs, technical and application notes, sample code and links to software service packs, and a MySupport feature that you can customize to make the best use of these tools.

For an additional level of technical phone support for installation, configuration, and troubleshooting, we offer TechConnect Support programs. For more information, contact your local distributor or Rockwell Automation representative, or visit <http://support.rockwellautomation.com>.

Installation Assistance

If you experience a problem with a hardware module within the first 24 hours of installation, please review the information that's contained in this manual. You can also contact a special Customer Support number for initial help in getting your module up and running.

United States	1.440.646.3223 Monday – Friday, 8am – 5pm EST
Outside United States	Please contact your local Rockwell Automation representative for any technical support issues.

New Product Satisfaction Return

Rockwell tests all of its products to ensure that they are fully operational when shipped from the manufacturing facility. However, if your product is not functioning, it may need to be returned.

United States	Contact your distributor. You must provide a Customer Support case number (see phone number above to obtain one) to your distributor in order to complete the return process.
Outside United States	Please contact your local Rockwell Automation representative for return procedure.

Allen-Bradley, Kinetix, PanelView, PanelView Plus, Rockwell Automation, RSView, RSView Machine Edition, RSView ME, RSView ME Station, RSView Studio, TechConnect, and VersaView are trademarks of Rockwell Automation, Inc.

Trademarks not belonging to Rockwell Automation are property of their respective companies.

www.rockwellautomation.com

Power, Control and Information Solutions Headquarters

Americas: Rockwell Automation, 1201 South Second Street, Milwaukee, WI 53204-2496 USA, Tel: (1) 414.382.2000, Fax: (1) 414.382.4444

Europe/Middle East/Africa: Rockwell Automation, Vorstlaan/Boulevard du Souverain 36, 1170 Brussels, Belgium, Tel: (32) 2 663 0600, Fax: (32) 2 663 0640

Asia Pacific: Rockwell Automation, Level 14, Core F, Cyberport 3, 100 Cyberport Road, Hong Kong, Tel: (852) 2887 4788, Fax: (852) 2508 1846