

Migrating Existing Images to New Industrial Computer Platforms

Creating New System Images Using Sysprep

Next generation industrial computers will contain new motherboards that require different drivers. Because the drivers are different, you cannot use your existing system image and will be required to create a new image. The drivers affected are the chipset, touch screen, audio, video, and Ethernet.

You can create a new image by loading your applications onto the new factory image which results in the most up to date and cleanest image or you can migrate your existing image. This document provides procedures on how to migrate your existing image by using the Microsoft utility, Sysprep.

You can download the Sysprep utility from the Rockwell Automation Knowledgebase. Refer to ID# 56979.

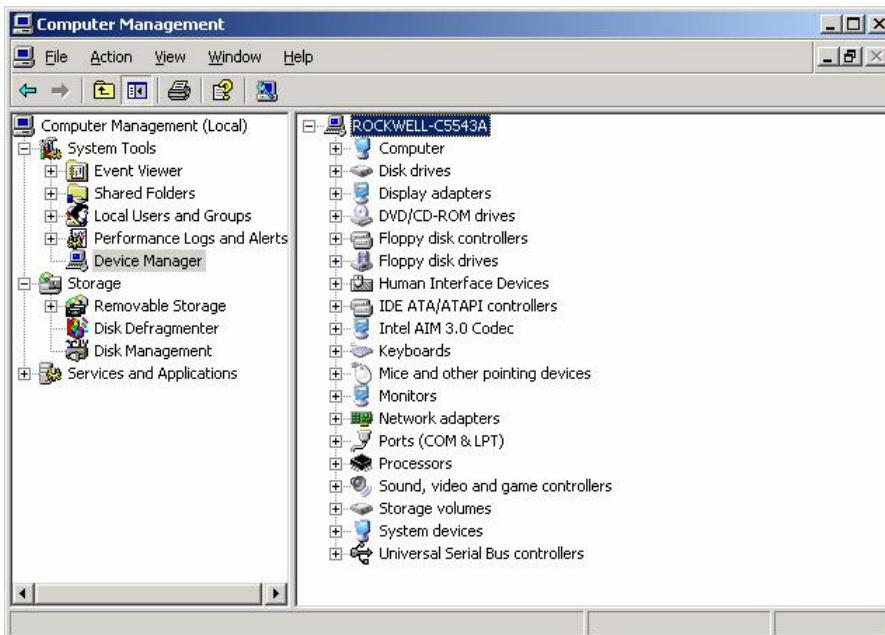
How to Migrate a Windows 2000 Image

Follow these steps to prepare the original computer you want to migrate to the new computer.

1. Right-click My Computer and select **Manage**.

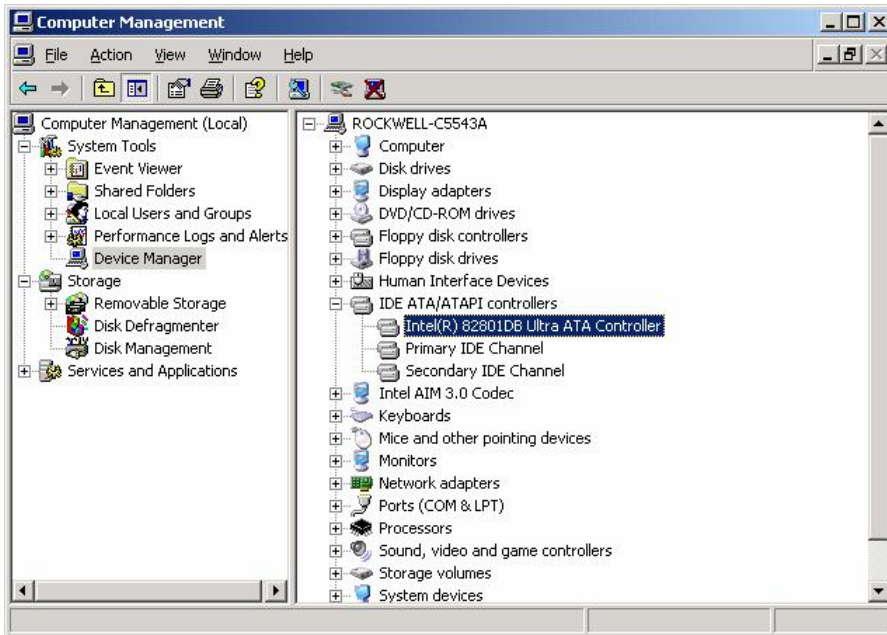


2. Under System Tools, select **Device Manager**.

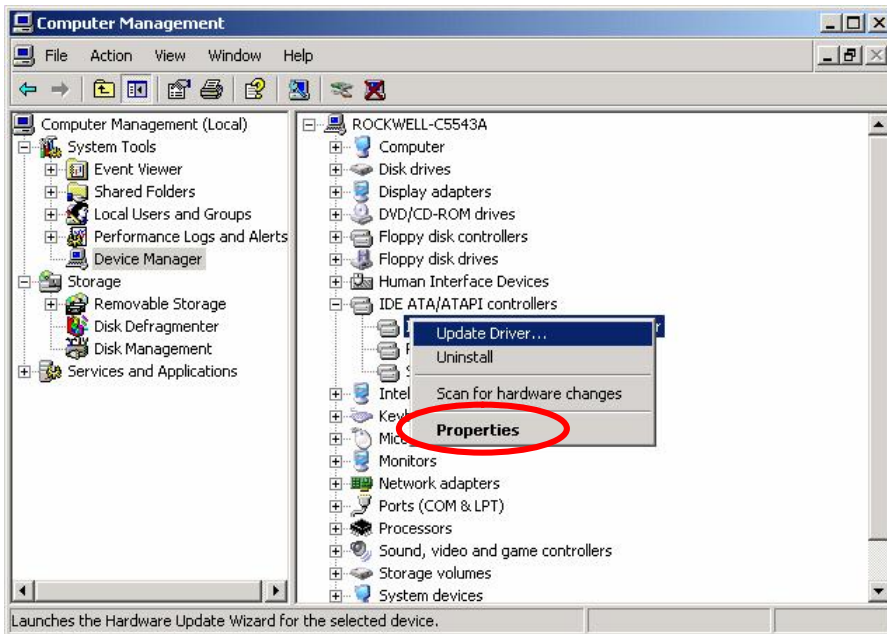


3. Expand IDE ATA/ATAPI controllers.

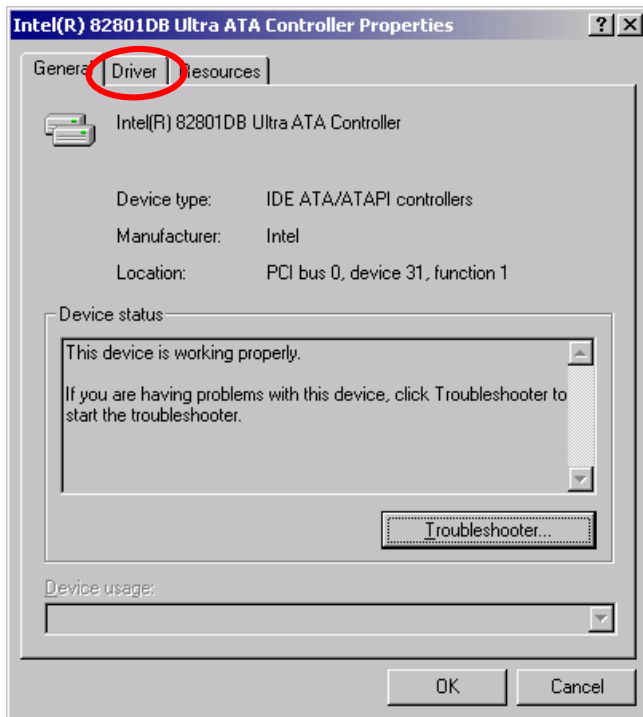
You want to update any controller that is not generic. A generic controller contains the word Primary or Secondary.



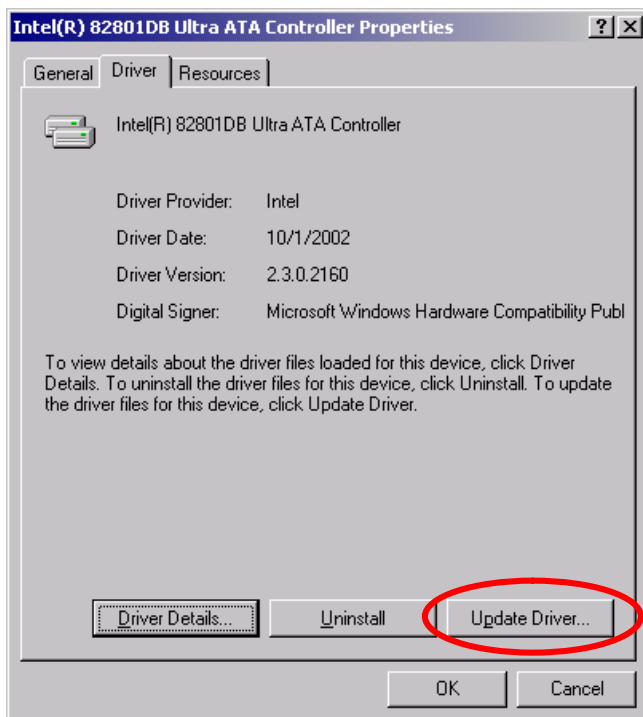
4. Right-click the nongeneric controller and select Properties...



5. Click the **Driver** tab.



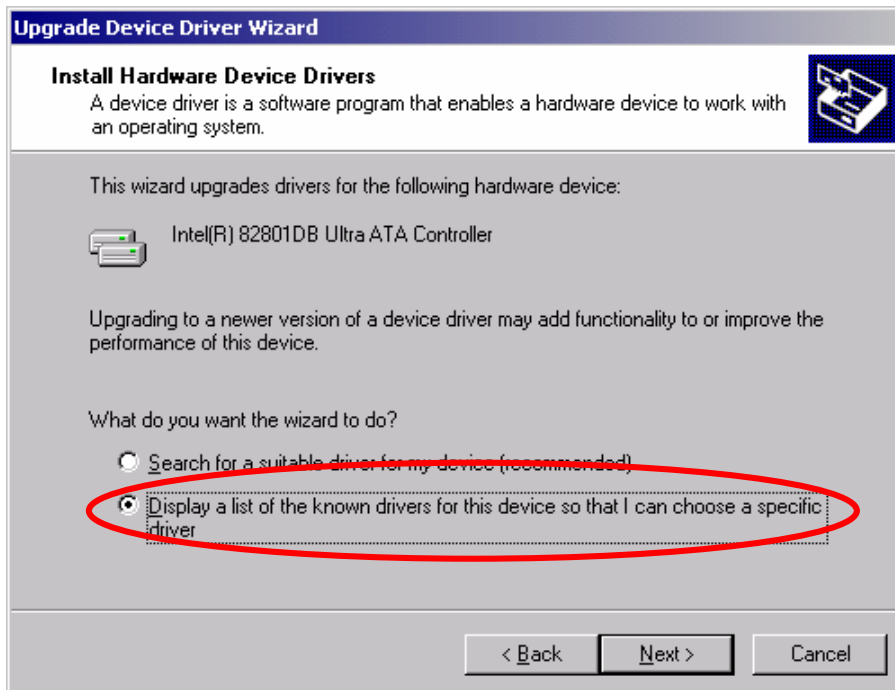
6. Click the **Update Driver** button.



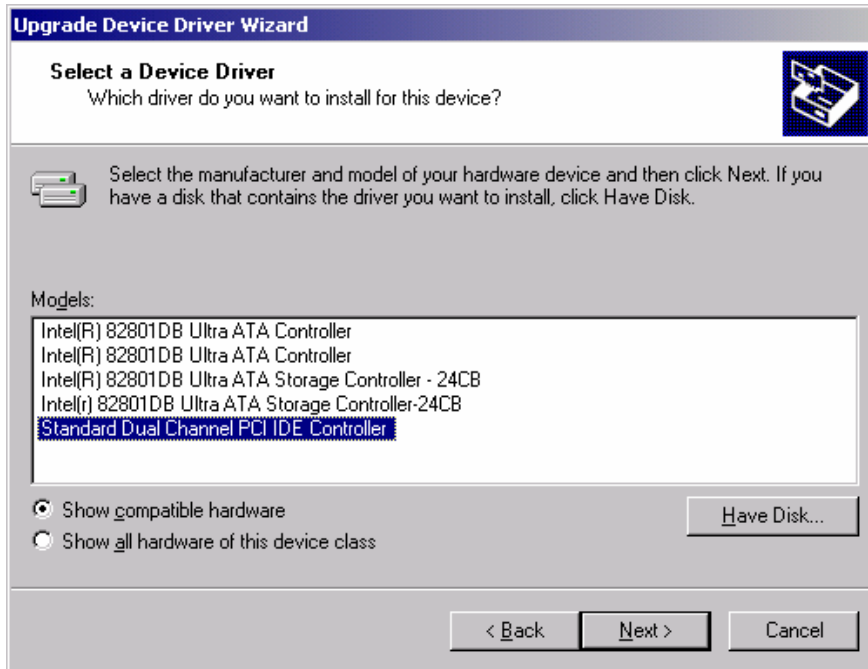
7. Click **Next** when the Upgrade Device Wizard opens.



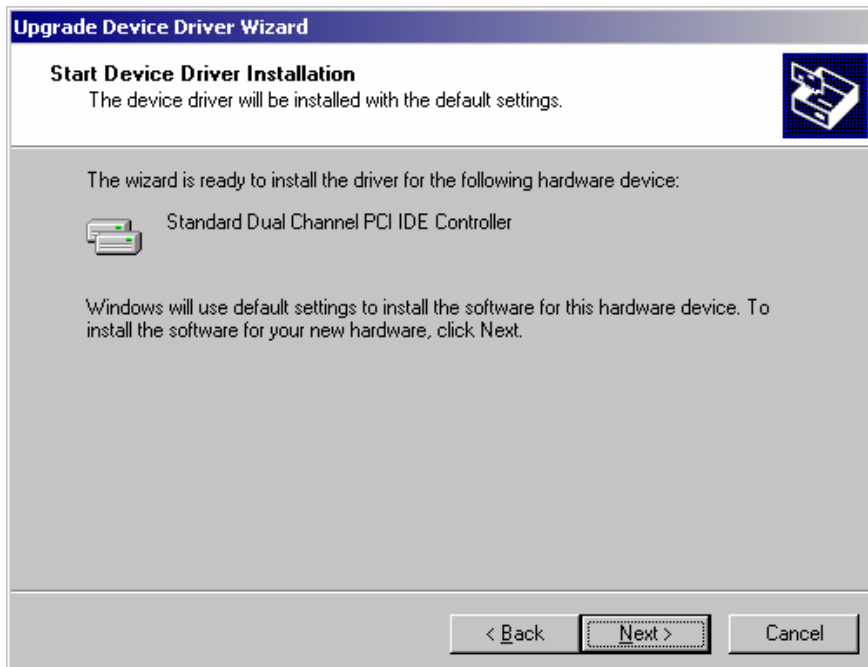
8. Select **Display a list of the known drivers for this device so that I can choose a specific driver**, then click **Next**.



9. Select the generic driver from the list, then click **Next**.



10. Click **Next** to start the device driver installation.



Windows will install the generic controller.

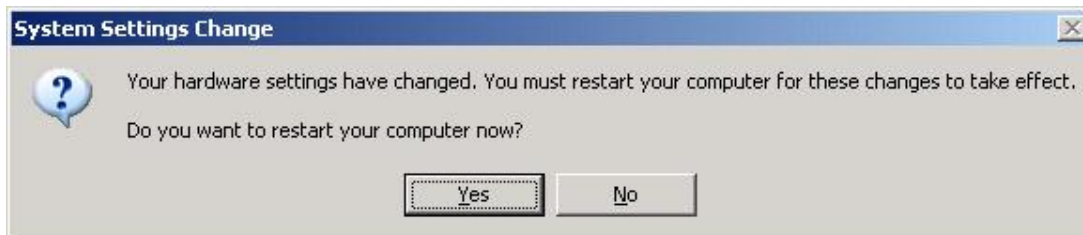
11. Click **Finish** to close the wizard.



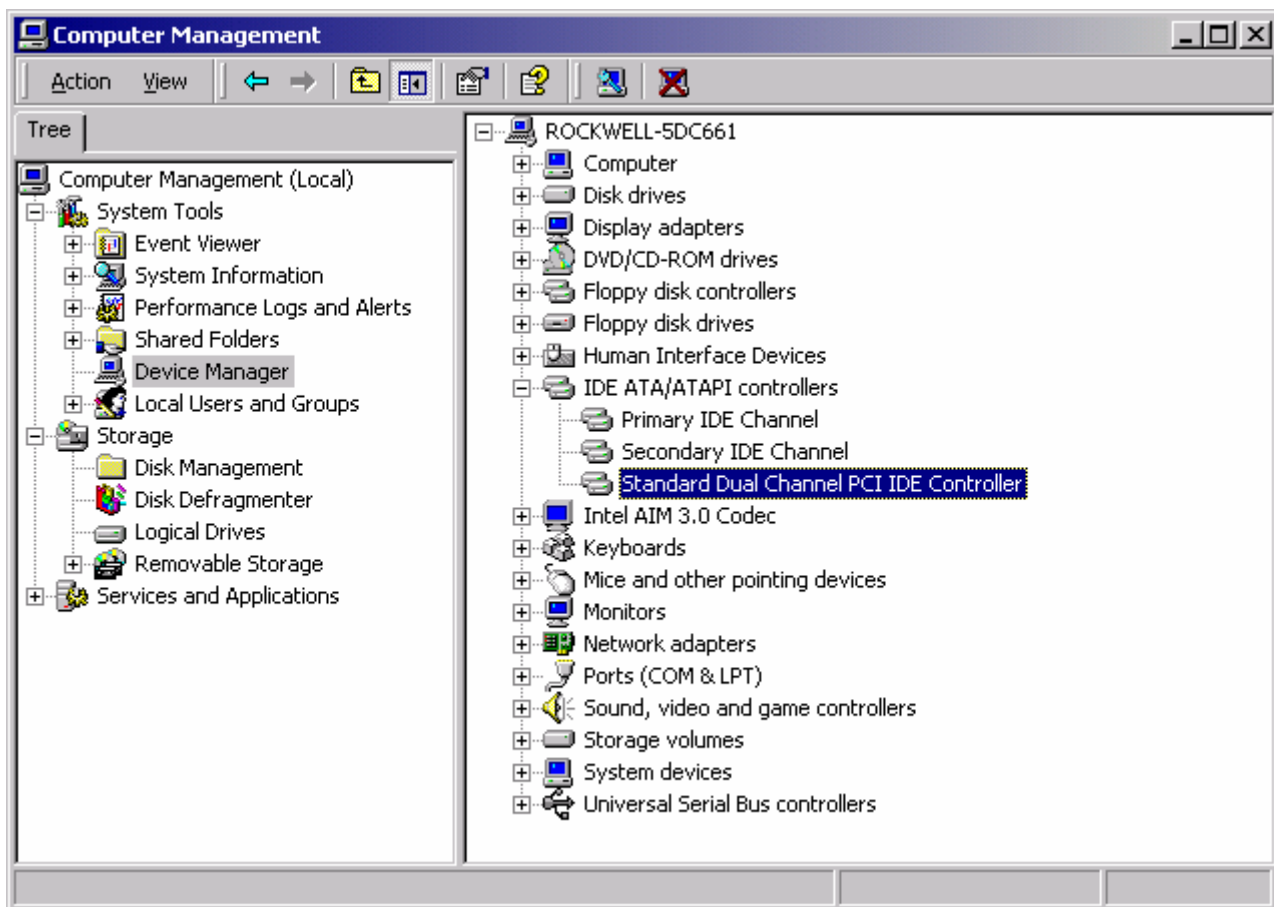
12. Click the **Close** button.



- Click **No** when prompted to restart the computer.

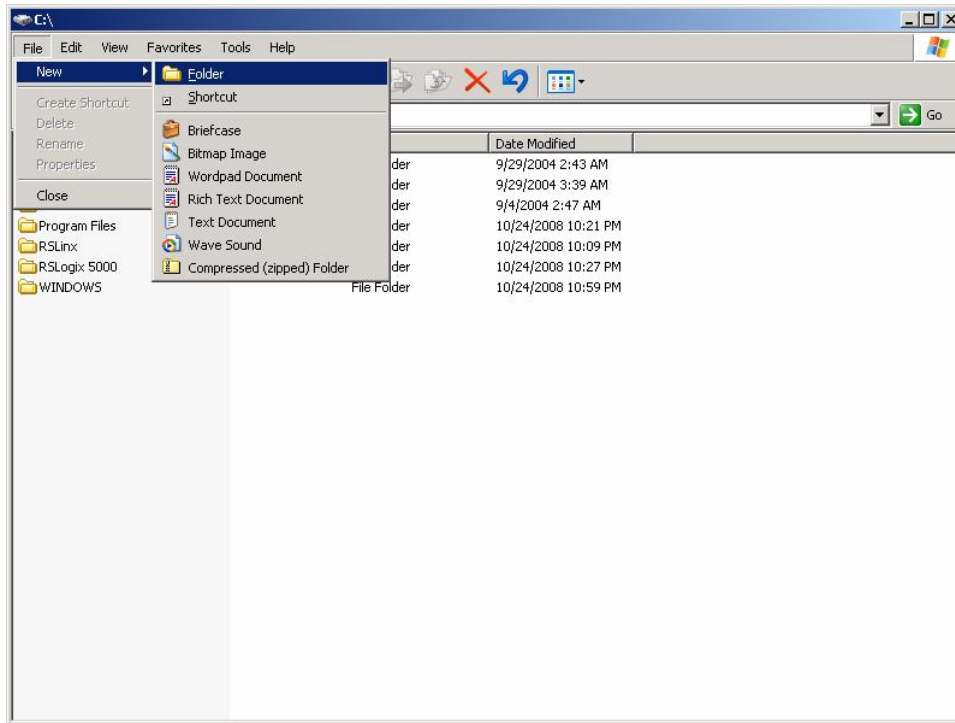


The list of controllers should look similar to this.

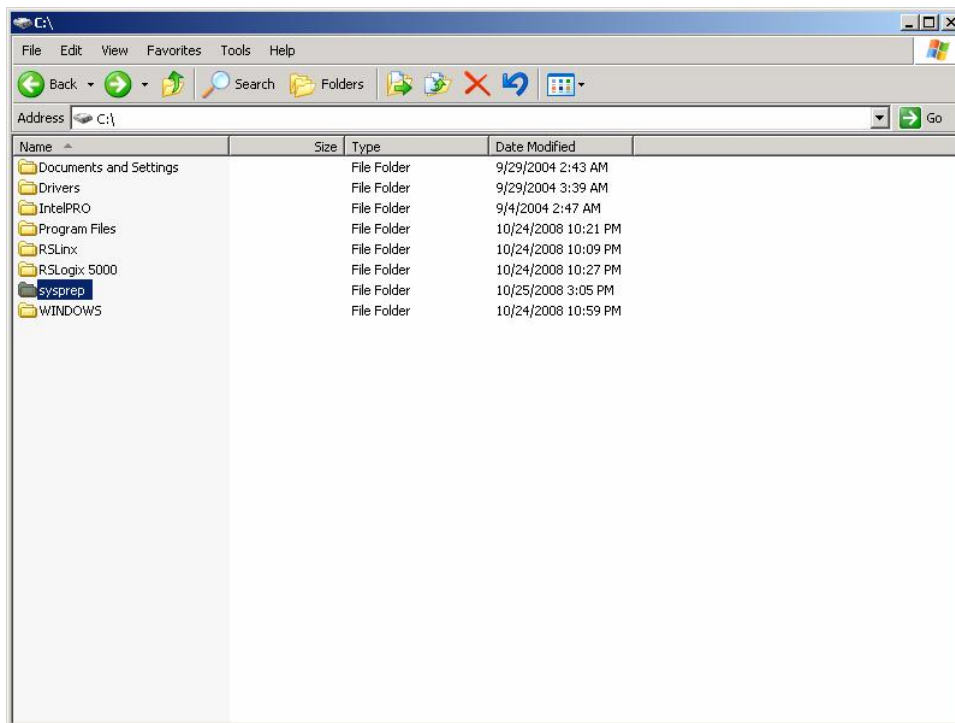


- Close the Computer Management dialog.
The computer is now ready for Sysprep.

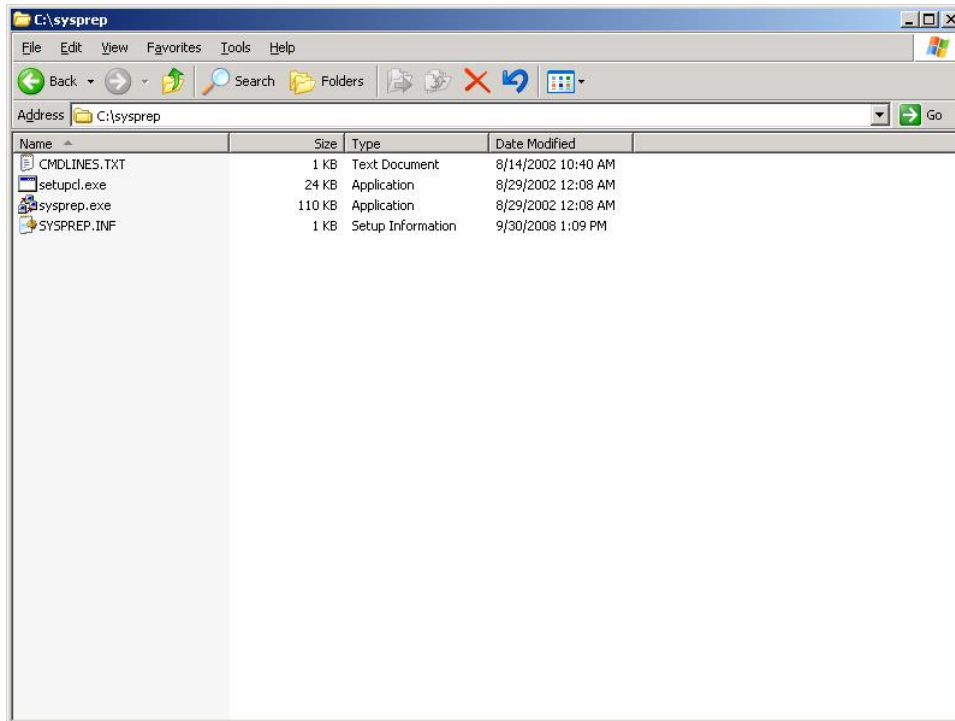
15. Create a new folder on the root drive, C:\.



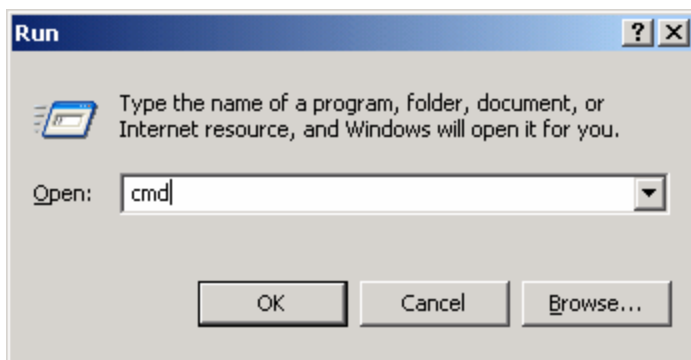
16. Rename the folder **Sysprep**.



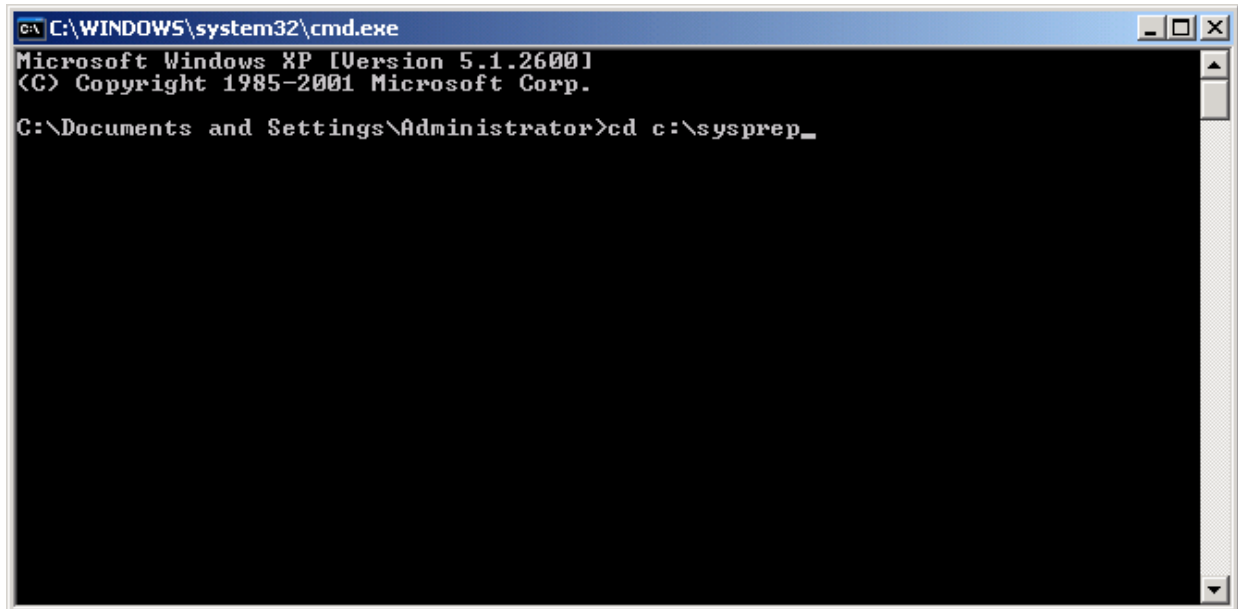
17. Extract the SYSPREP_2K.zip file to C:\Sysprep..



18. Select **Run** from the Start menu, then type **cmd** and click **OK**.



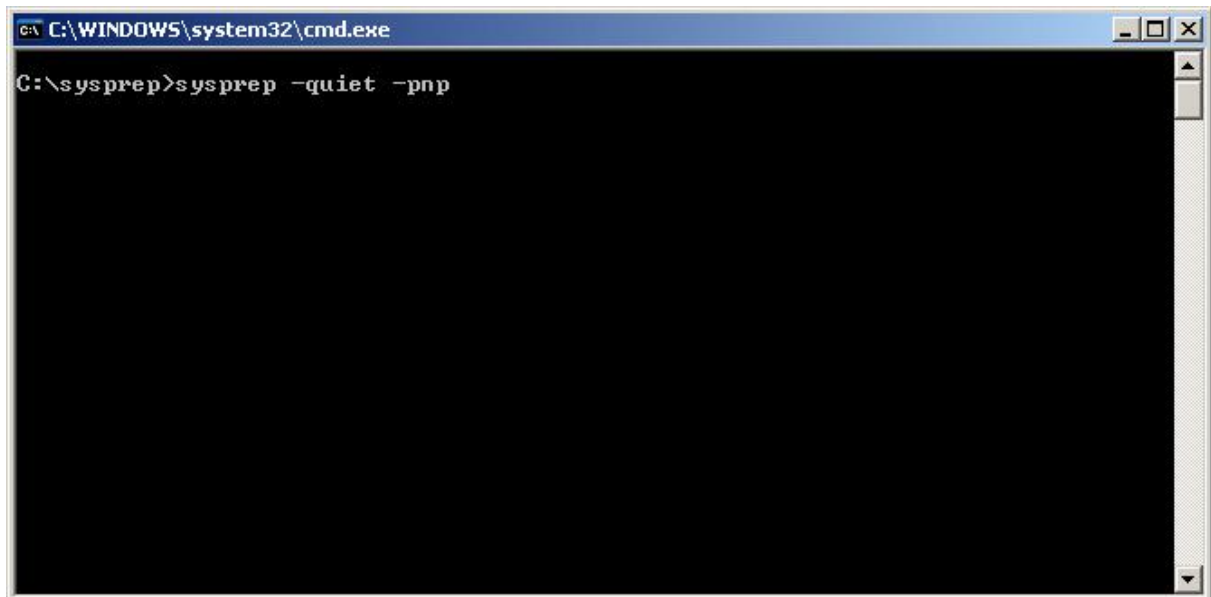
19. Type `cd c:\sysprep` to change the working directory.



```
C:\WINDOWS\system32\cmd.exe
Microsoft Windows XP [Version 5.1.2600]
(C) Copyright 1985-2001 Microsoft Corp.

C:\Documents and Settings\Administrator>cd c:\sysprep_
```

20. Type `sysprep -quiet -pnp`, then press the Enter key.



```
C:\WINDOWS\system32\cmd.exe

C:\sysprep>sysprep -quiet -pnp
```

When the sysprep process is done, the computer shuts down. The computer is now ready to be ghosted. Refer to the Cloning Utility for Rockwell Automation Industrial Computers, publication [6000-TD002](#). Contact technical support for further assistance.

After ghosting the sysprep image to your new computer, the computer will be ready to perform the Windows End User Setup. When the setup is done and the computer boots to the desktop, you need to install the drivers that are specific to that hardware. You can find the drivers at <http://www.ab.com/industrialcomputers/drivers/>.

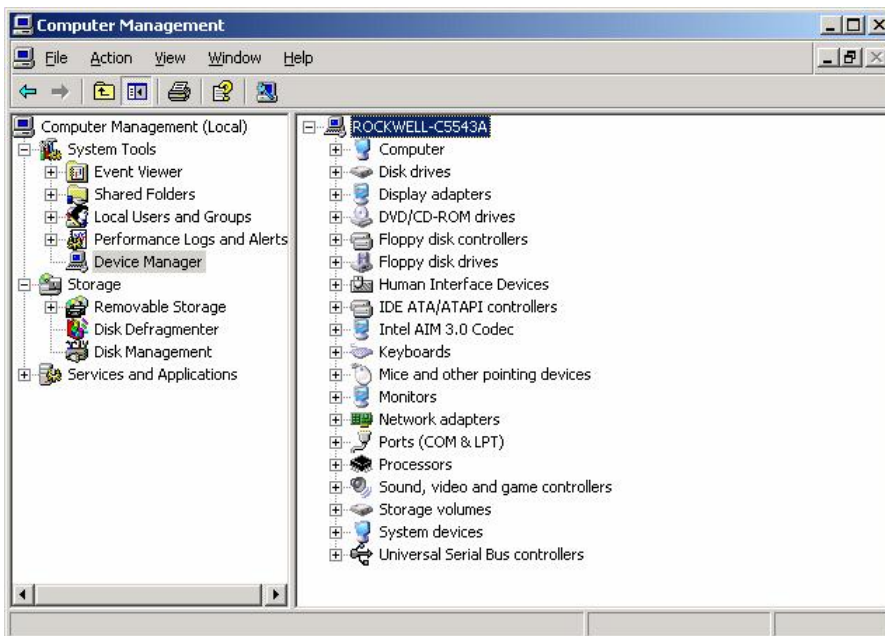
How to Migrate a Windows XP Image

Follow these steps to prepare the original computer you want to migrate to the new computer.

1. Right-click My Computer and select **Manage**.

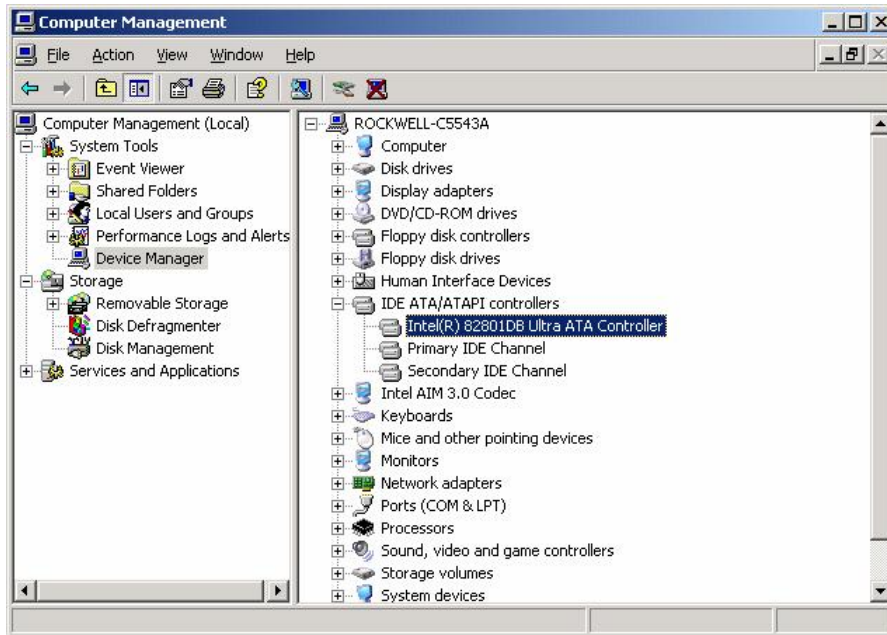


2. Under System Tools, select **Device Manager**.

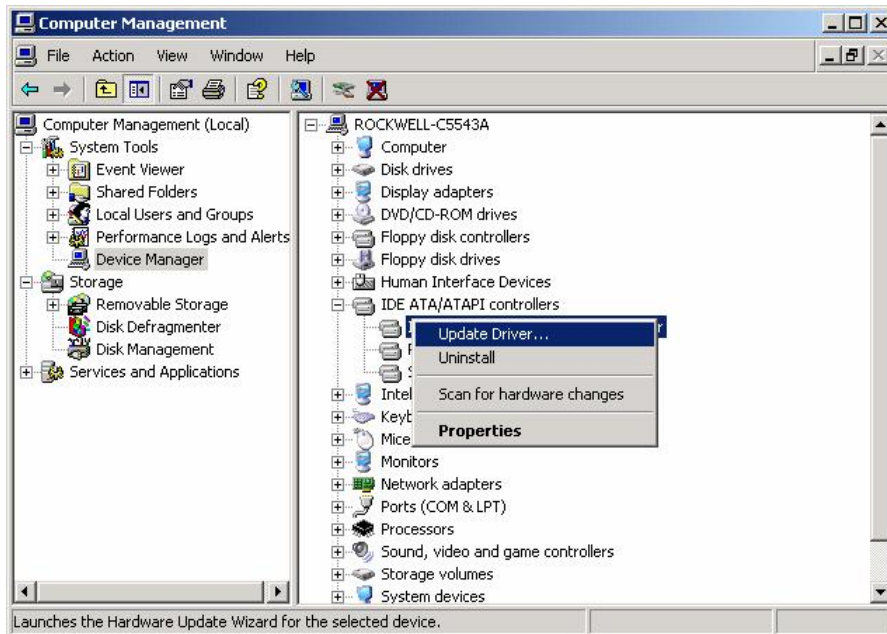


3. Expand **IDE ATA/ATAPI controllers**.

You want to update any controller that is not generic. A generic controller contains the word Primary or Secondary.



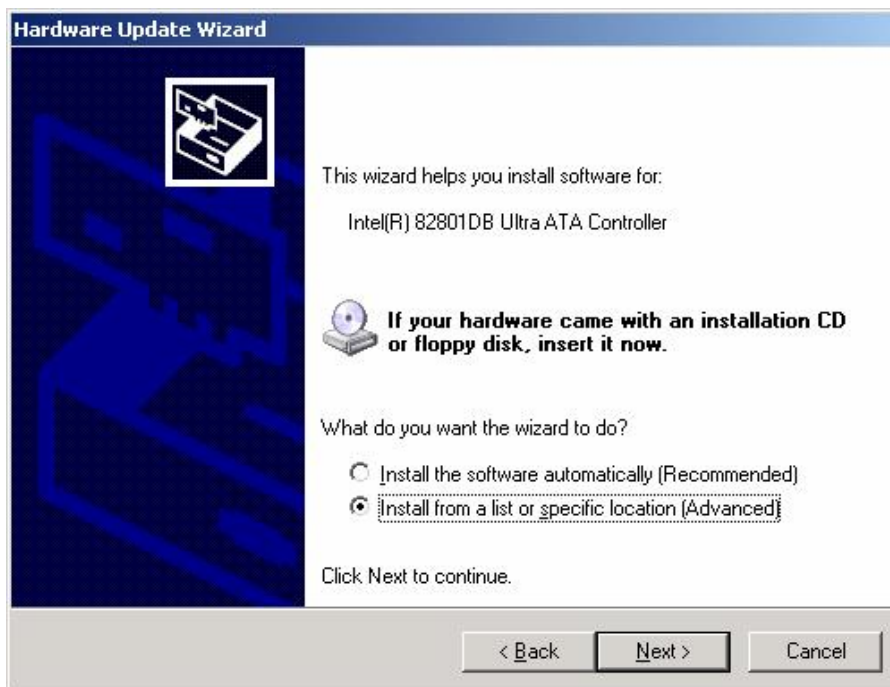
4. Right-click the nongeneric controller and select **Update Driver...**



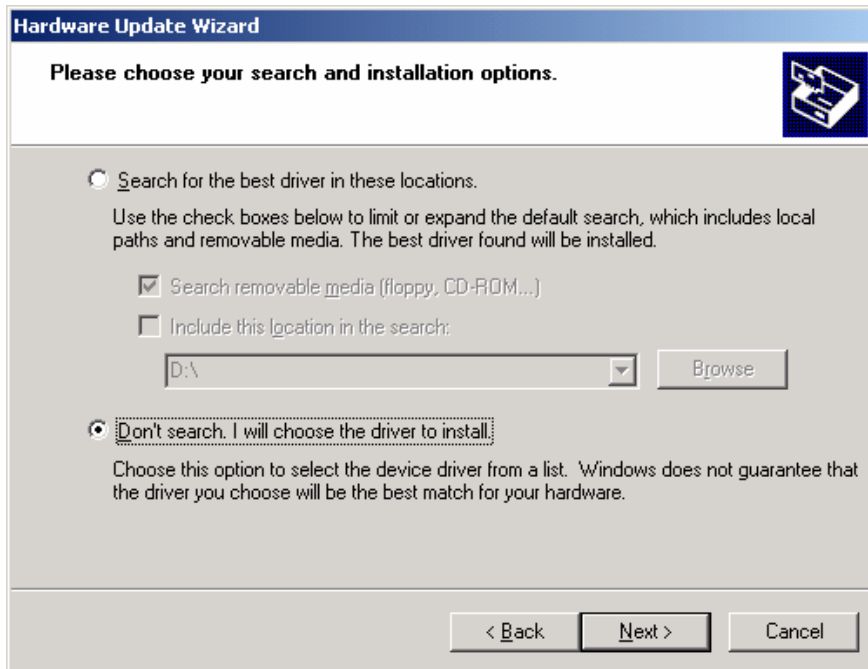
- When the Hardware Update Wizard opens, select **No, not this time**, then click **Next**.



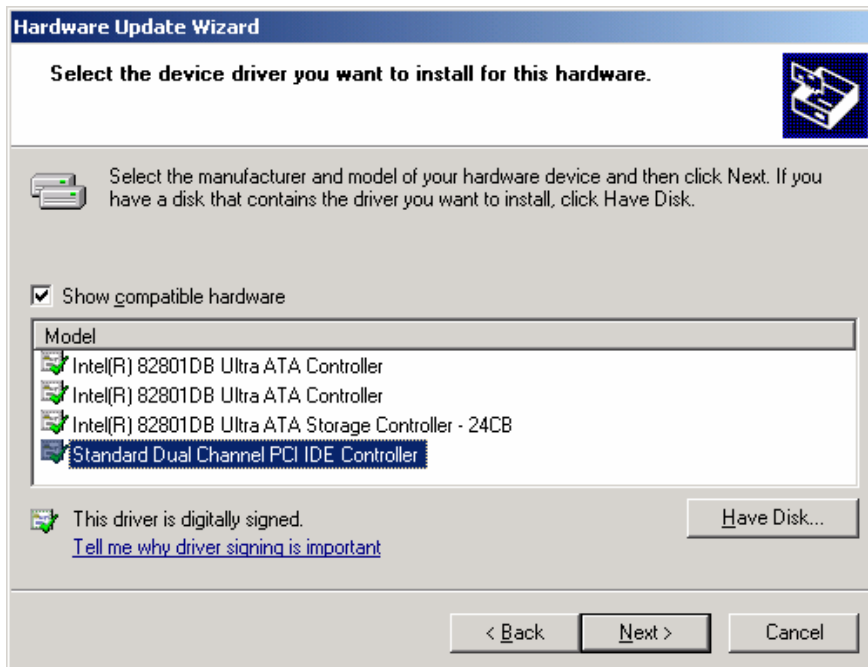
- Select **Install from a list or specific location (Advanced)**, then click **Next**.



7. Select **Don't search, I will choose the driver to install**, then click **Next**.

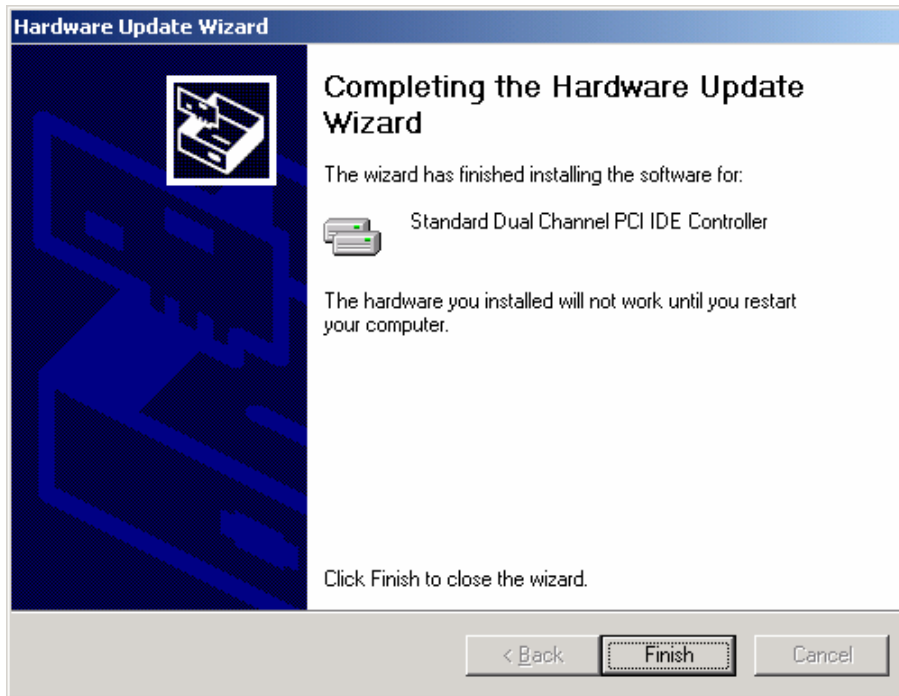


8. Select the generic controller from the list, then click **Next**.

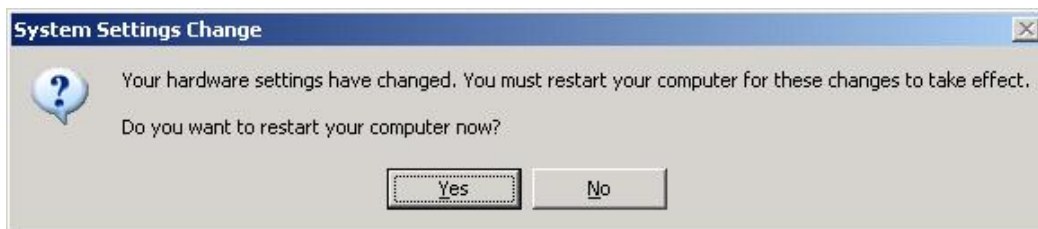


Windows will install the generic controller.

9. Click **Finish** to close the wizard.



10. Click **No** when prompted to restart the computer.



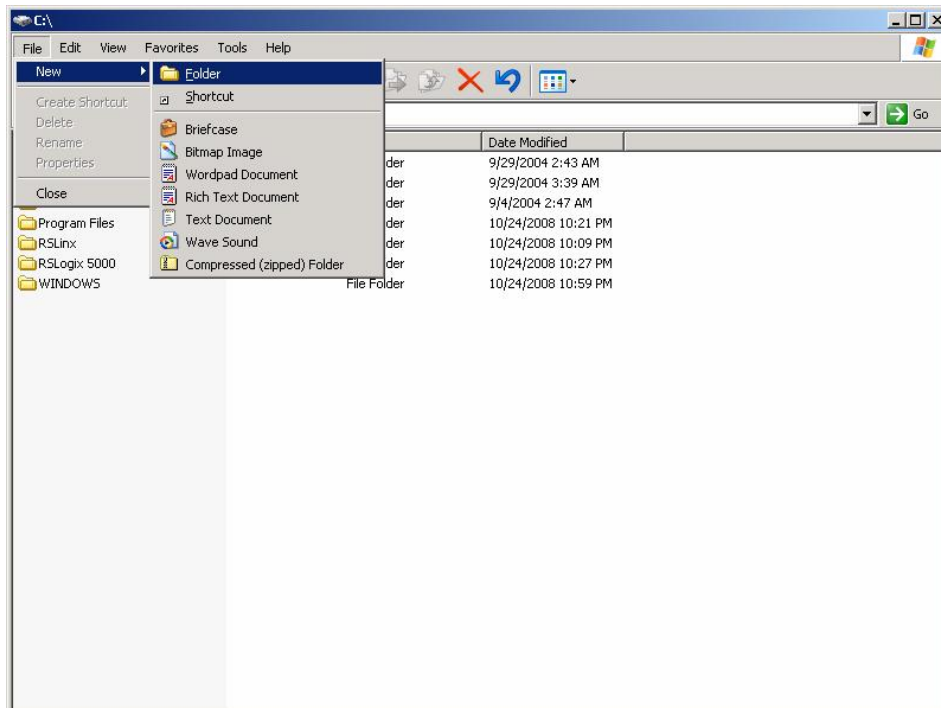
The list of controllers should look similar to this.

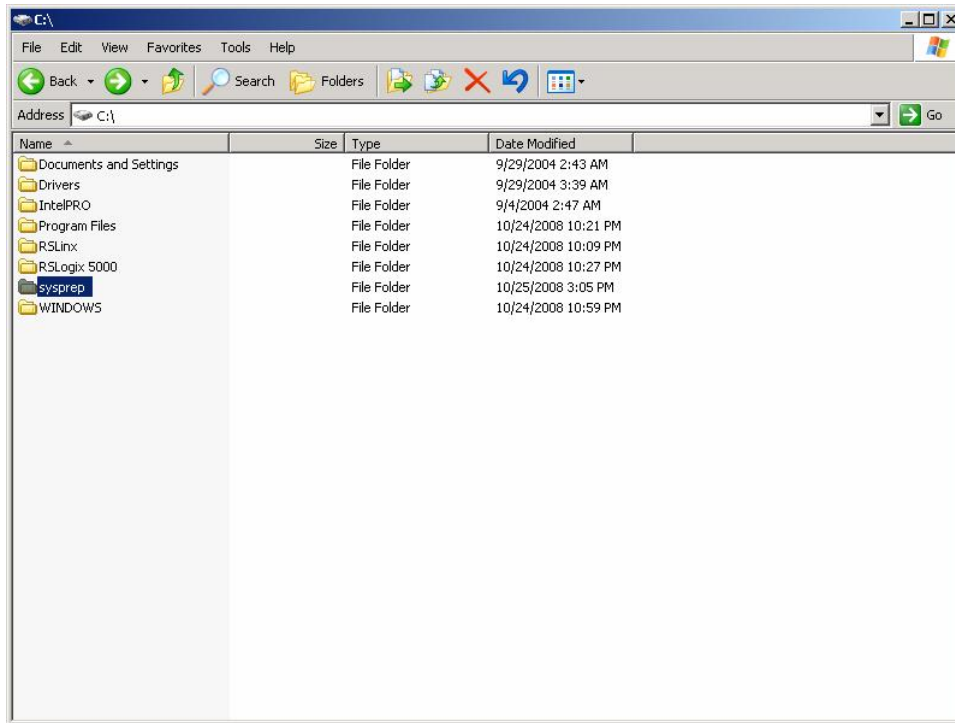


11. Close the Computer Management dialog.

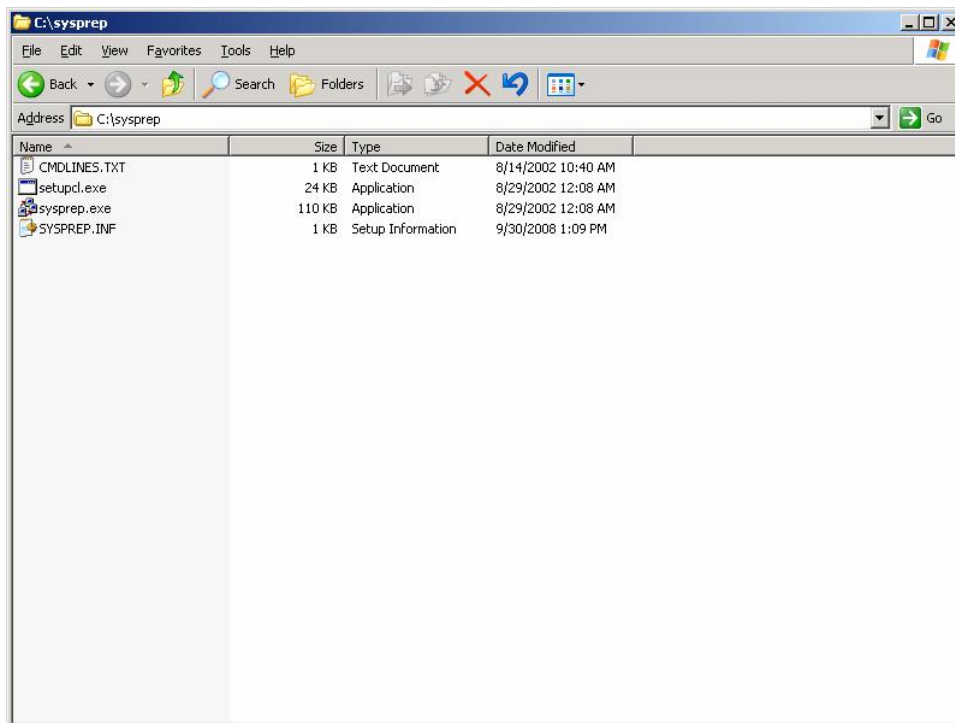
The computer is now ready for Sysprep.

12. Create a new folder on the root drive, C:\.

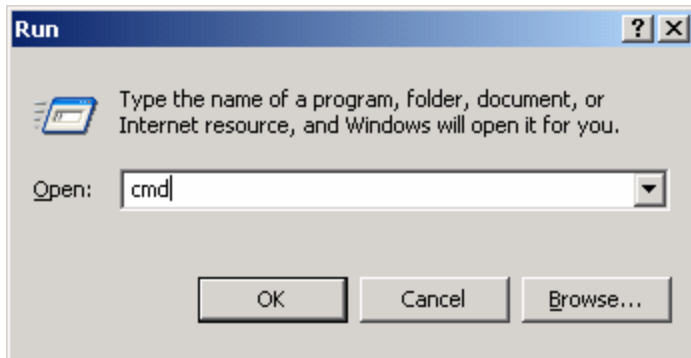


13. Rename the folder **Sysprep**.

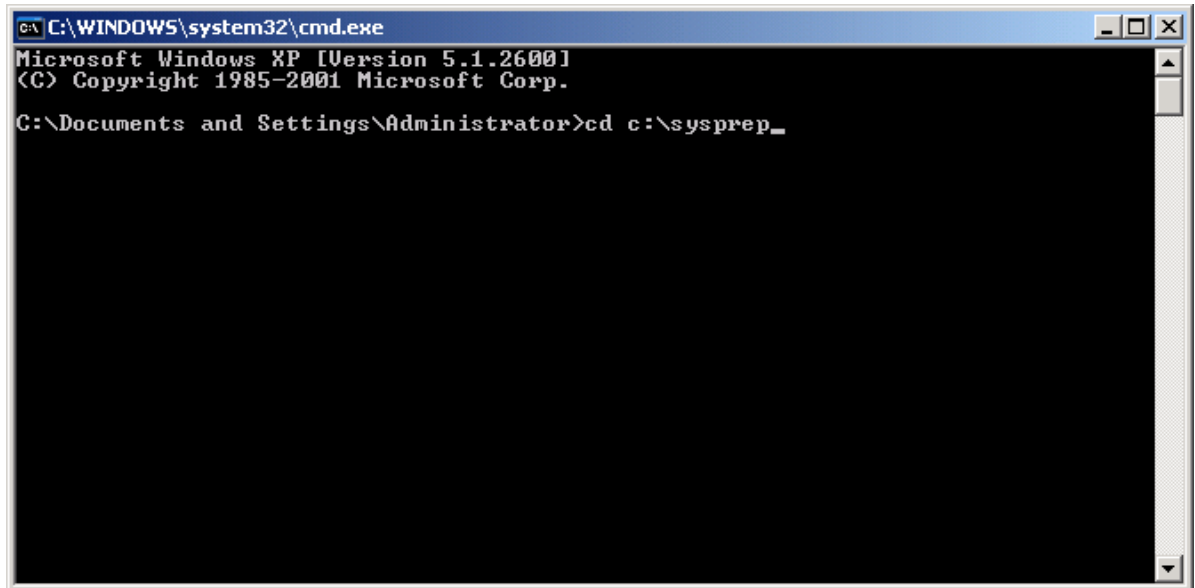
14. Extract the SYSPREP_XP.zip file to C:\Sysprep.



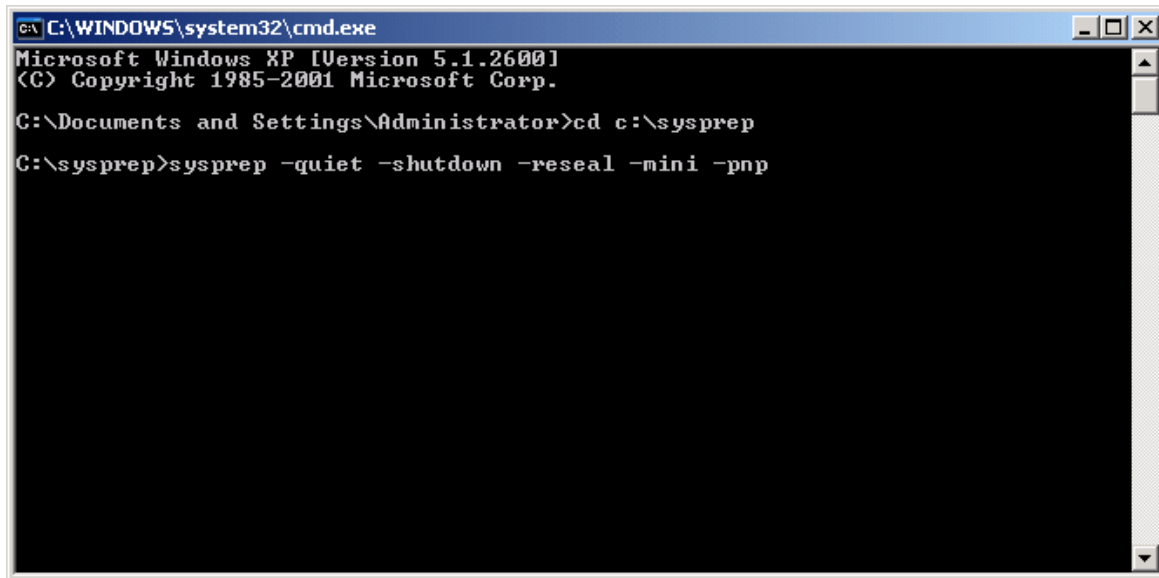
15. Select **Run** from the Start menu, then type **cmd** and click **OK**.



16. Type **cd c:\sysprep** to change the working directory.



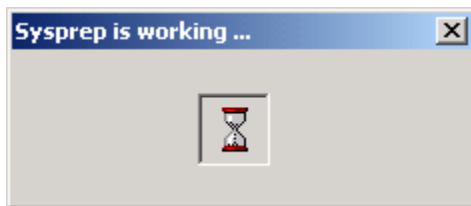
17. Type `sysprep -quiet -shutdown -reseal -mini -pnp`, then press the **Enter** key.



```
c:\WINDOWS\system32\cmd.exe
Microsoft Windows XP [Version 5.1.2600]
(C) Copyright 1985-2001 Microsoft Corp.

C:\Documents and Settings\Administrator>cd c:\sysprep
C:\sysprep>sysprep -quiet -shutdown -reseal -mini -pnp
```

You should see this popup.



When the sysprep process is done, the computer shuts down. The computer is now ready to be ghosted. Refer to the Cloning Utility for Rockwell Automation Industrial Computers, publication [6000-TD002](#). Contact technical support for further assistance.

After ghosting the sysprep image to your new computer, the computer will be ready to perform the Windows End User Setup. When the setup is done and the computer boots to the desktop, you need to install the drivers that are specific to that hardware. You can find the drivers at: <http://www.ab.com/industrialcomputers/drivers/>.

www.rockwellautomation.com

Power, Control and Information Solutions Headquarters

Americas: Rockwell Automation, 1201 South Second Street, Milwaukee, WI 53204 USA, Tel: (1) 414.382.2000, Fax: (1) 414.382.4444

Europe/Middle East/Africa: Rockwell Automation, Vorstlaan/Boulevard du Souverain 36, 1170 Brussels, Belgium, Tel: (32) 2 663 0600, Fax: (32) 2 663 0640

Asia Pacific: Rockwell Automation, Level 14, Core F, Cyberport 3, 100 Cyberport Road, Hong Kong, Tel: (852) 2887 4788, Fax: (852) 2508 1846