



# WinPFT File Transfer Utility

(Catalog No. 2711-ND7)

## Overview

WINPFT is a stand-alone Windows utility which lets you transfer applications developed for standard PanelView terminals or Dataliner DL40 Plus Message Displays between a personal computer and a

- Dataliner DL40 Plus
- Standard PanelView Terminal

PanelView applications are initially created as .PBA files in PanelBuilder32. To transfer these files, using the WinPFT utility, you must save the files in a .PVA format within PanelBuilder32 using the **File>Save As** command. Applications developed for the DL40 Plus have a .MEM extension and can be transferred using the WinPFT utility.

<b>For Information on:</b>	<b>See Page:</b>
System Requirements	1
Installing WinPFT	2
Online Documentation	2
Communication Drivers	2
Using WinPFT	4
Downloading an Application	5
Verifying an Application	9
Uploading an Application	10

## System Requirements

The WinPFT utility runs on systems with Windows 95, Windows 98, Windows NT or Windows 2000.

### **For Windows 95, requirements are:**

- 486/66 or higher PC compatible
- minimum of 16 MB RAM
- 10 MB of free hard disk space
- SVGA Monitor with 800 x 600 resolution or better
- Microsoft Mouse or Windows compatible mouse

### **For Windows 98, NT or 2000, requirements are:**

- 100 Mz Pentium class processor or higher PC compatible
- minimum of 32 MB RAM
- 10 MB of free hard disk space
- SVGA Monitor with 800 x 600 resolution or better
- Microsoft Mouse or Windows compatible mouse

## Installing WinPFT

1. Close all programs.
2. Insert the CD labeled WinPFT into your CD-ROM drive. If Autorun is enabled on your system, the installation starts automatically and you can skip steps 3 and 4.
3. From the **Start** menu, select **Run**.
4. Type D:\AUSERUP (substitute the appropriate letter of your CD-ROM driver for D).
5. Follow the instructions on the screen.

To start WinPFT, from the **Start** menu, select **WinPFT**.

### TIP



For your convenience, the WinPFT CD is formatted to create disks for installing the WinPFT utility on a system without a CD drive.

## Online Documentation

In addition to the online help available with WinPFT, your CD contains an Adobe Acrobat .PDF file named 2711-TD006AENP.pdf. This document contains instructions on using the WinPFT utility.

You can find this document at:

**\docs\pdf\2711-TD006AENP.PDF**

It is also available during installation by selecting the Information and Documentation option.

## Communication Drivers

Before transferring .PVA or .MEM applications, you must have the appropriate communication driver installed and configured on your computer. WinPFT has an internal DF1 driver for point-to-point connections between the serial COM port of your computer and the RS-232 port of the PanelView terminal or DL40 Plus Message Display. For network connections, you must configure an RSLinx driver.

## Internal DF1 Driver

The Internal DF1 Driver can automatically set the DF1 settings used by the PanelView terminal or DL40 Plus Message Display. Verify that these settings are set correctly from the Download File or Upload File dialog.

Parameters	PanelView Settings	Dataliner Settings
Baud Rate	19200	9600
Parity	None	None
Error Detect	CRC	N/A
Stop Bits	1	N/A
Protocol	Full Duplex	Half-Duplex
Handshake	None	None
Data Bits	N/A	8

You cannot use the DF1 driver to transfer applications between a computer and a DH-485 or RS-232 (DH-485) terminal. You must use the RSLinx **1747-PIC/AIC+ Device** driver.

### IMPORTANT

The WinPFT internal DF1 driver is not available to any serial port on your computer that is configured to use an RSLinx driver or used by another application.

## RSLinx Drivers

To transfer applications over a network or between two different communication networks, you must configure the appropriate RSLinx driver on your computer. RSLinx is installed as a part of the WinPFT software installation.

### To access RSLinx:

Click the **Start** button, and then select:

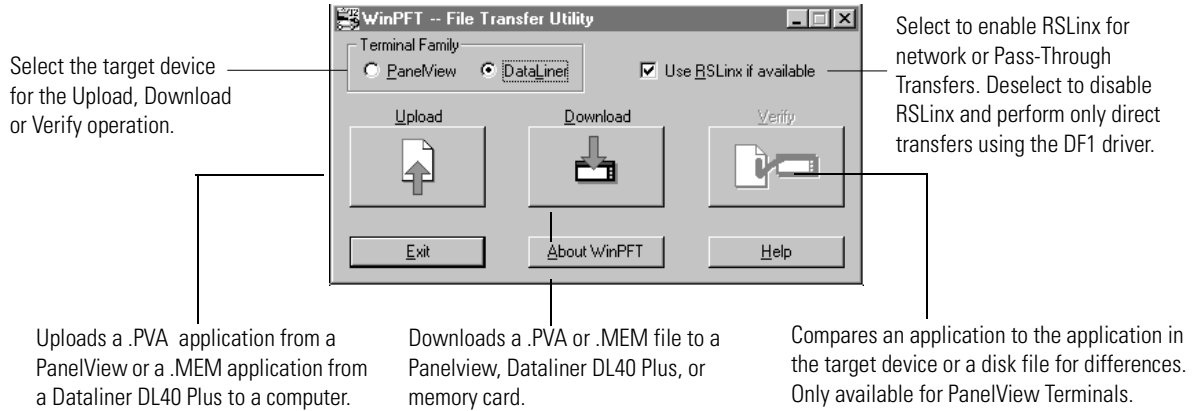
**Programs>RockwellSoftware> RSLinx>RSLinx**

For details on how to configure an RSLinx driver, refer to the RSLinx online documentation. In general, you configure a driver by selecting **Communications>Configure Drivers** in RSLinx or from the WinPFT dialogs.

## Using WINPFT

### To run the WINPFT Utility:

Click the **Start** button and select **Programs>WinPFT**.



All WinPFT operations are accessed from the above dialog. You can:

- Upload a .PVA or a .MEM application from a PanelView terminal or a DL40 Plus Message Display to a computer using a point-to-point or network connection.
- Download a .PVA or a .MEM application from a computer to a PanelView Terminal or DL40 Plus Message Display using a point-to-point or network connection.
- Verify (or compare) a .PVA application with the application loaded in the terminal or a disk file. The Verify function is only available for PanelView terminals.

#### TIP



If you disable the **Use RSLinx if available** checkbox, RSLinx Network and Remote I/O Pass-Through will not be available as Transfer Type options on the dialogs. To transfer files directly using the DF1 driver, disable this check box. Disabling the check box saves time because RSLinx will not be loaded into memory.

## Downloading an Application

To download a .PVA or .MEM application from WinPFT to a PanelView terminal or DL40 Plus Message Display, select the target device on the main dialog and then click **Download**.

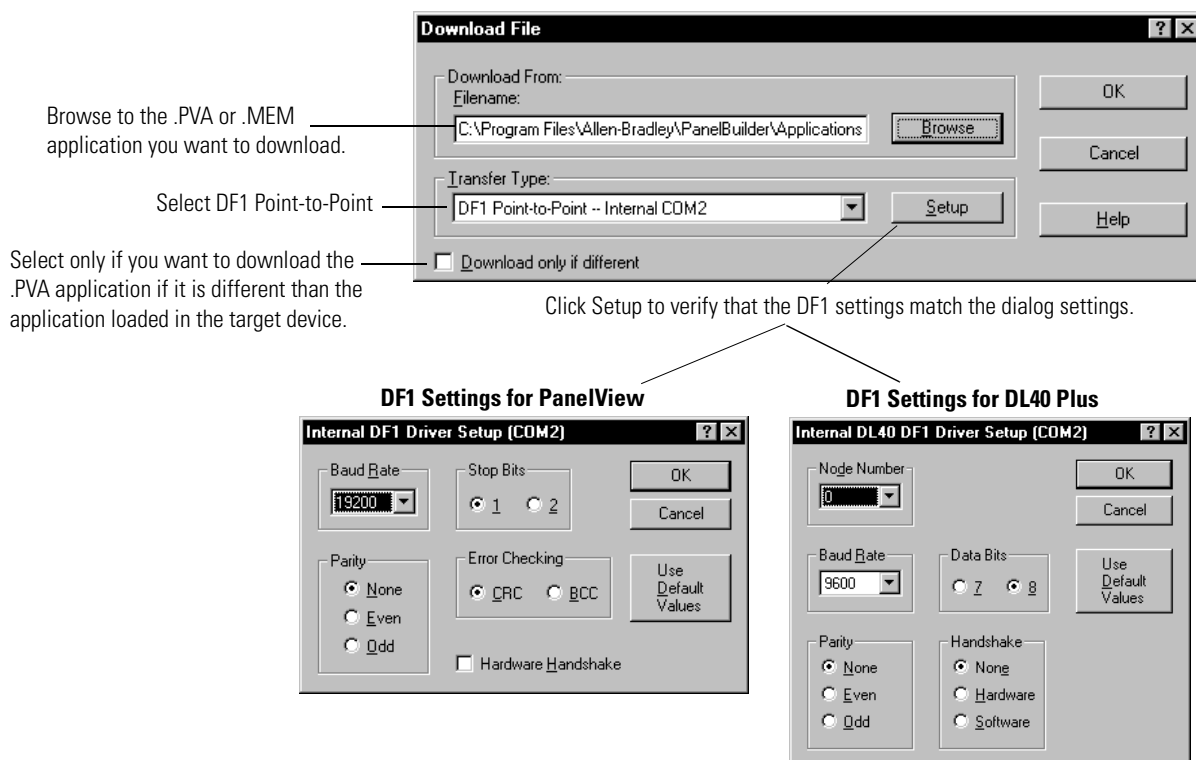
### IMPORTANT

For PanelView applications, the download file must be in a .PVA format. Use **File>Save As** in PanelBuilder32 to save a .PBA file to .PVA format required for PanelView terminals.

## Downloading to Terminal using the Internal DF1 Driver

If downloading a .PVA or .MEM application using a point-to-point connection, use the Internal DF1 Driver included with WinPFT. The 2711-NC13 or 2706-NC13 cable (9-pin connector) provides the connection between your computer's serial COM port and the RS-232 port of the PanelView terminal or DL40 Plus Message Display. For the PanelView 300 Micro, use the 2711-CBL-PM05 cable.

**Note:** To transfer applications between a computer and a DH-485 or RS-232 (DH-485) PanelView, you must use the **RSLinx 1747-PIC/AIC+ Device** driver, not the Internal DF1 Driver.

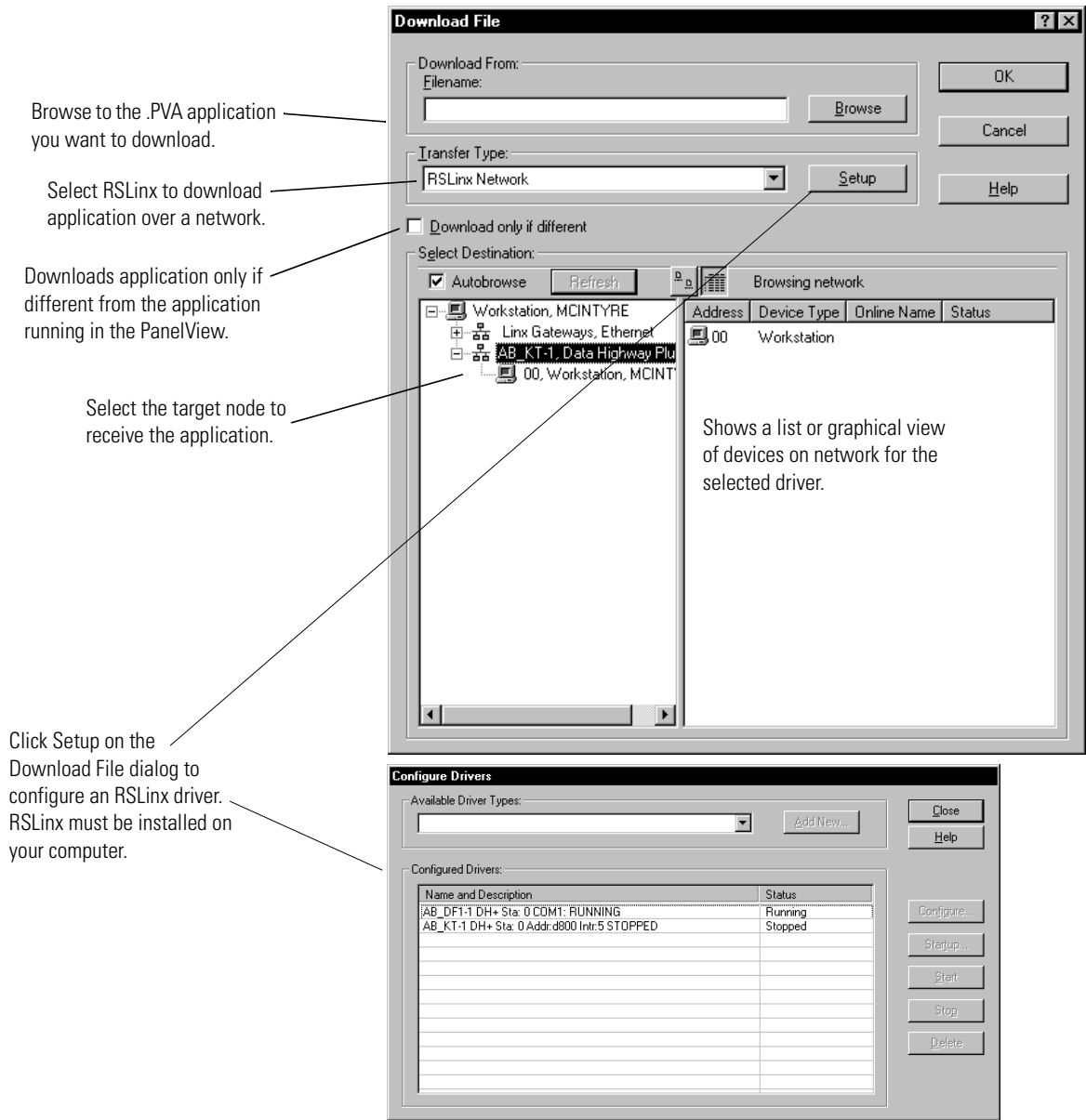


The Application Download Progress dialog opens to monitor the progress of the transfer. When the download is complete, the PanelView Terminal or DL40 Plus Message Display resets, verifies and starts the application.

## Downloading .PVA Files over Network using RSLinx Driver

**Note:** This operation is not available to DL40 Plus .MEM applications.

To download a .PVA application over a network or between different networks, the appropriate RSLinx driver must be configured and running on your computer. The driver can be configured by clicking **Setup** when **RSLinx Network** is selected as the **Transfer Type**.



When you click **OK** on the **Download File** dialog, the Application Download Progress dialog opens to monitor the progress of the transfer. When the download is complete, the PanelView terminal resets, verifies and starts the application.

## Downloading (or Uploading) using Remote I/O Pass-Through

This section shows how to transfer a .PVA or .MEM application between a computer and a PanelView terminal or a DL40 Plus Message Display on a Remote I/O network.

Using RSWho, select the PLC, SLC or 1756-DH RIO scanner that the PanelView or Dataliner is connected to on the Remote I/O network. On the WinPFT Download (or Upload) dialog, select **Remote I/O Pass-Through** as the **Transfer Type** and then click the **Setup** button to configure the required rack address and Starting Module.

### ATTENTION



If downloading with the processor in run mode, verify the rack address of the target terminal. Downloading to an incorrect rack address may result in unexpected operation or damage to equipment.

### PLC or 1756-DH RIO Scanner Type

#### PLC Parameters

Rack Address	For PLC Scanner Type, select the rack address (0 to 76 octal) of the PanelView on the Remote I/O link.
Starting Module	Select the starting module group (0,1 2,3 4,5 or 6,7) of the Panelview in the Remote I/O rack.

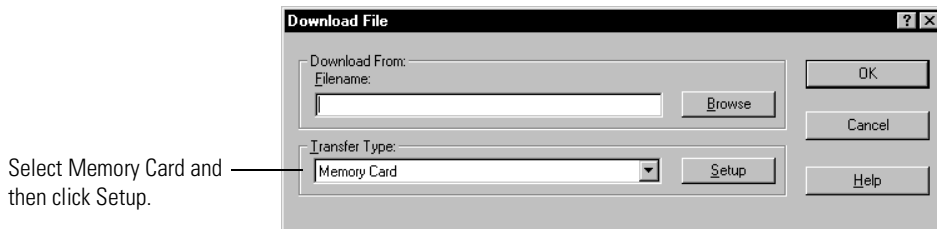
### SLC Scanner Type

#### SLC Parameters

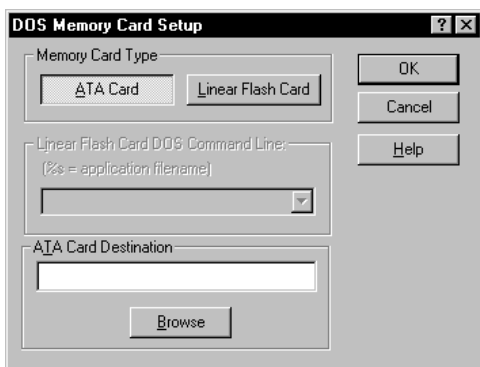
SLC Scanner Location	Select the slot number where the SLC scanner resides. Default is the leftmost slot (scanner card closest to processor).
Rack Address	Specify the rack address of the PanelView on the Remote I/O network.
Starting Module	Select the starting module group (0,1 2,3 4,5 or 6,7) of the Panelview in the Remote I/O rack.

## Downloading to a Memory Card

This section shows how to download a .PVA application file to a memory card. This function is not available to .MEM application files.

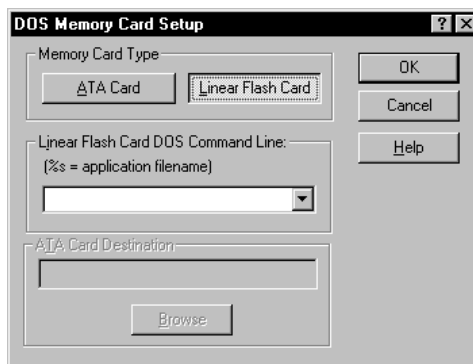


**For ATA Cards**  
2711-NM28, -NM216



Enter the name of the .PVA file in which to save the application or click Browse to search for a file.

**For Linear Flash Cards**  
2711-NM11, -NM12, -NM13, -NM14



For DataBook TMB240 or TMB250 card drives, you must enter the following command string:

**CMD %s Drive:**

CMD	DOS command which copies file to card. Command is drive specific. See instructions for your card drive.
%s	Wild card character which PanelBuilder32 replaces with the application file name.
Drive:	Card drive on your computer (F:)



## Verifying an Application

The Verify function is only available for PanelView terminals. Use the **Verify** function to compare a .PVA application with:

- .PVA application loaded in the terminal or
- .PVA application file stored on disk

This function lets you check to see if differences exist between two applications. You might not want to download an application if it is the same application running in the terminal. The Verify dialog provides an option that will download the application only if it is different than the application in the terminal.

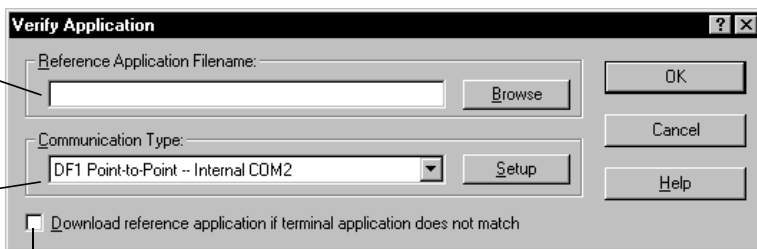
Browse to the .PVA file you want to compare with the application loaded in a terminal or a disk file.

Select the target location of the application that you want to compare to the Reference application:

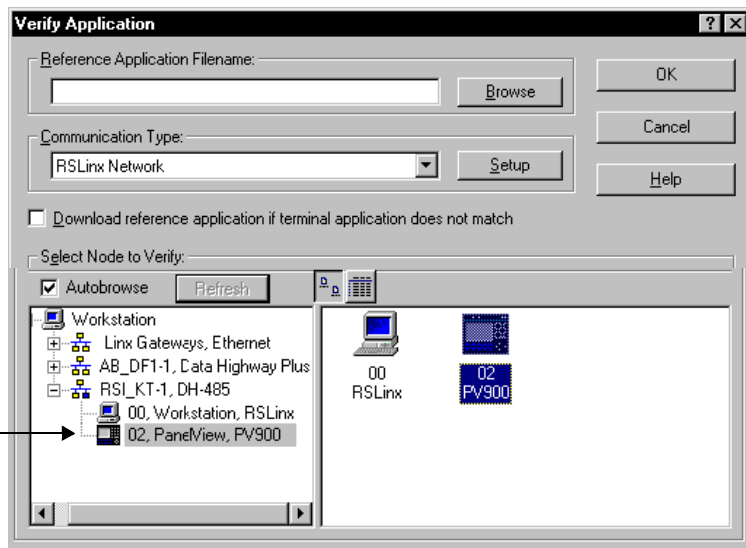
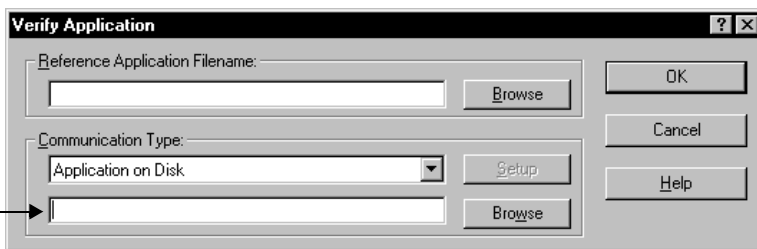
- DF1 Point-to-Point
- RSLinx Network or Remote I/O Pass-Through
- Application on Disk

Browse to the disk file you want to compare with the reference application.

Select the PanelView terminal node running the application you want to compare with the reference application.



Select to download reference application only if different from the application running in the terminal.



## Uploading an Application

To upload a .PVA or .MEM application from a PanelView terminal or a DL40 Plus Message Display to your computer using WinPFT, click **Upload** on the main dialog.

### Uploading from Terminal using the Internal DF1 Driver

If uploading a .PVA or .MEM application to a computer using a point-to-point connection, use the Internal DF1 Driver. This driver is included with WinPFT. The 2711-NC13 or 2706-NC13 cable (9-pin connector) provides the connection between your computer's serial COM port and the RS-232 port of the PanelView terminal or DL40 Plus Display. For the PanelView 300 Micro, use the 2711-CBL-PM05 cable.

**Note:** To transfer applications between a computer and a DH-485 or RS-232 (DH-485) PanelView, you must use the **RSLinx 1747-PIC/AIC+ Device** driver, not the Internal DF1 Driver.

Select destination for the uploaded application:

- disk file (only option for .MEM files)
- disk file and also open in PanelBuilder32

Browse to location where to store uploaded application.

Uploads application with original file name or specified name.

Select DF1 Point-to-Point

Specify which preset values to upload with the .PVA application only.

Click **Setup** to verify that the DF1 settings match the dialog settings.

**DF1 Settings for PanelView**

**Internal DF1 Driver Setup**

Baud Rate: 19200

Stop Bits: 1

Parity: None

Error Checking: CRC

Hardware Handshake:

**DF1 Settings for DL40 Plus**

**Internal DL40 DF1 Driver Setup (COM2)**

Node Number: 0

Baud Rate: 9600

Data Bits: 8

Parity: None

Handshake: None

When the upload is complete, the .PVA or .MEM application is saved to a disk file. For a .PVA application, you also have the option of saving the application to a disk file and then opening the application in PanelBuilder32.

## Uploading .PVA Files from Network Using RSLinx Driver

**Note:** This operation is not available to DL40 Plus .MEM applications.

To upload a .PVA application only over a network or between different networks, the appropriate RSLinx driver must be configured and running on your computer. The driver can be configured by clicking Setup when RSLinx Network is selected as the Transfer Type or in the RSLinx software.

Select destination for the uploaded application:

- disk file
- disk file and also open in PanelBuilder32

Browse to location where to store uploaded application.

Uploads application with original file name or specified name.

Select RSLinx Network

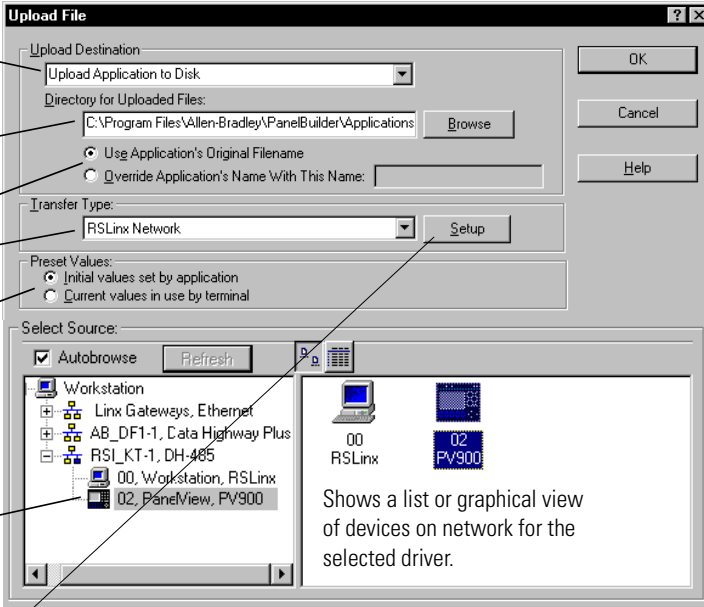
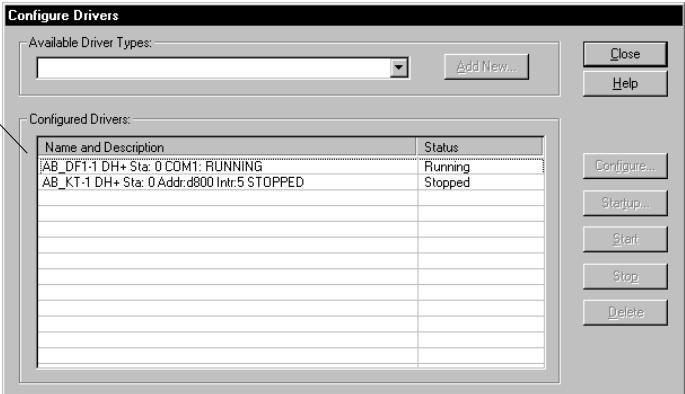
Specify which preset values to upload with application.

Click + to show devices for each driver or - to collapse view.

Select the node from which to upload the application.

Shows a list or graphical view of devices on network for the selected driver.

Click the Setup button on the Upload File dialog to configure an RSLinx driver. RSLinx must be installed on your computer.

Name and Description	Status
AB_DF1-1 DH+ Sta: 0 COM1: RUNNING	Running
AB_KT-1 DH+ Sta: 0 Addr:d800 Intrl:5 STOPPED	Stopped

When the upload is complete, the application is either saved to a disk file or saved to a disk file and then opened in PanelBuilder32.

[www.rockwellautomation.com](http://www.rockwellautomation.com)

---

**Power, Control and Information Solutions Headquarters**

Americas: Rockwell Automation, 1201 South Second Street, Milwaukee, WI 53204-2496 USA, Tel: (1) 414.382.2000, Fax: (1) 414.382.4444

Europe/Middle East/Africa: Rockwell Automation, Vorstlaan/Boulevard du Souverain 36, 1170 Brussels, Belgium, Tel: (32) 2 663 0600, Fax: (32) 2 663 0640

Asia Pacific: Rockwell Automation, Level 14, Core F, Cyberport 3, 100 Cyberport Road, Hong Kong, Tel: (852) 2887 4788, Fax: (852) 2508 1846