



# Connected Components Workbench

## Software Quick Tips

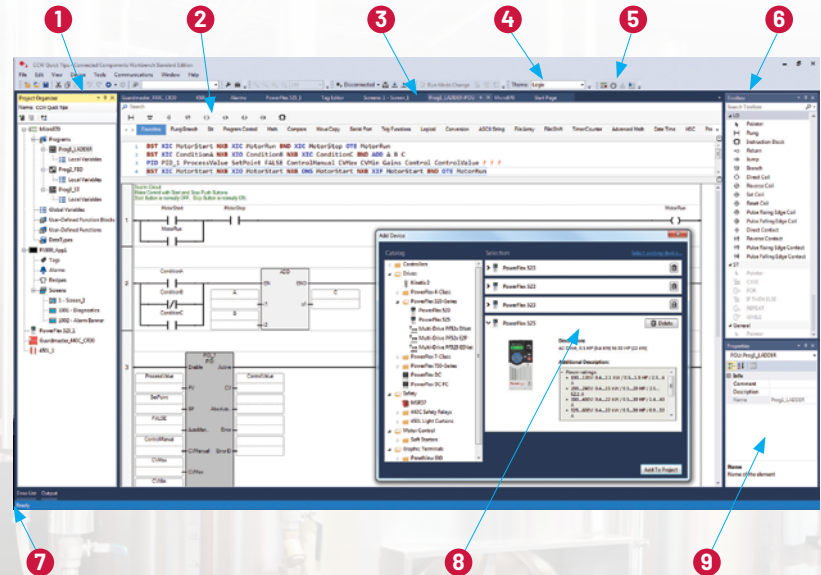


Find out more at the  
Connected Components Workbench™  
software page  
[rok.auto/ccw](http://rok.auto/ccw)

▶ **Boost programming efficiency with our self-paced tutorials at**  
[rok.auto/ccwvideos](http://rok.auto/ccwvideos)

▶ **Accelerate machine development with one integrated software**

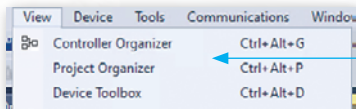
## Main Window



- |   |                                           |   |                             |   |                     |
|---|-------------------------------------------|---|-----------------------------|---|---------------------|
| 1 | Controller Organizer or Project Organizer | 4 | Themes Toolbar              | 7 | Status Bar          |
| 2 | Instruction Toolbar                       | 5 | Micro800™ Simulator Toolbar | 8 | Add Device Selector |
| 3 | Central Workspace                         | 6 | Instruction Toolbox         | 9 | Properties Pane     |

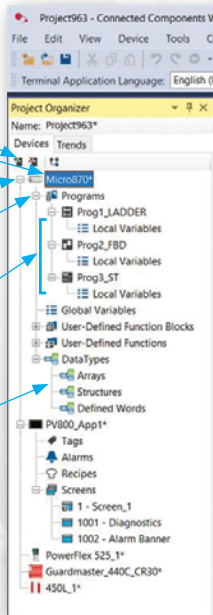
▶ **BEGIN**

# Organizer View



Choose between the Controller Organizer or Project Organizer view

## Project Organizer



Add Device Selector

Right-click and select Memory Module Backup and Restore to enable encryption on user backup project\*

Right-click and select Change Controller to switch between controller types

Right-click to add Structured Text, Ladder Diagram or Function Block Diagram

Drag-and-drop Programs to different positions in order to change the execution order

Expanded User-defined Data Types (UDT) in Project tree to simplify programming\*

\*Available in Connected Components Workbench software version 20 or later

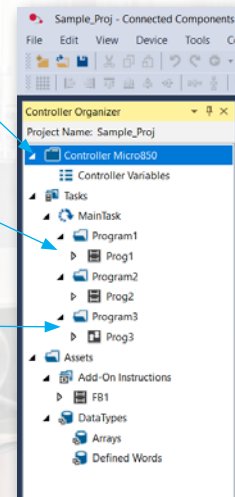
## Controller Organizer

Available in Connected Components Workbench software version 13 or later

New organizer view for enhanced user experience

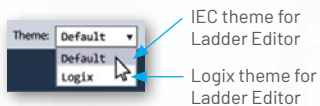
Right-click to add new Task, routines and interrupts

Program arrangements and edits are reflected in both views

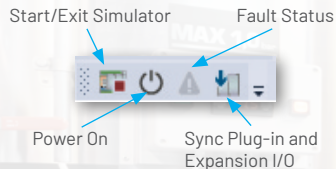


# Organizer View

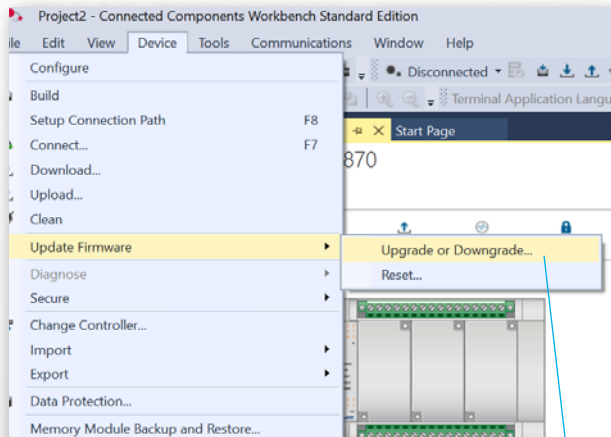
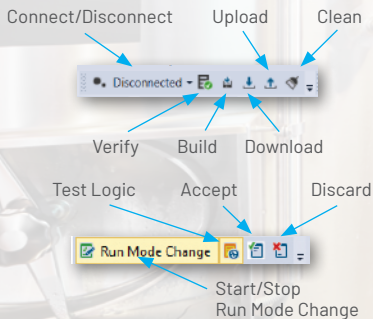
## Themes Toolbar



## Micro800 Simulator Toolbar



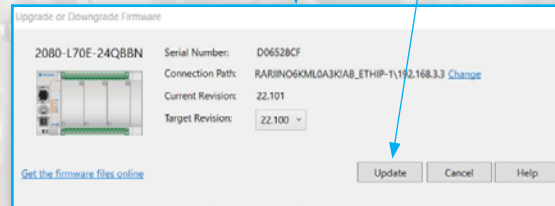
## Connection and Run Mode Change



## Firmware Update

Update device firmware from Project Organizer without ControlFLASH™ or ControlFLASH Plus™ software\*

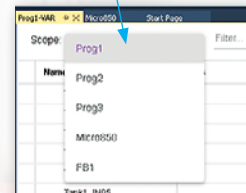
\*Available in Connected Components Workbench software version 22 or later



# Data Grid

Available in Connected Components Workbench software version 13 or later

Switch between Local and Global Variable data grid



Find the right tags easily with the enhanced Variable Selector using variable scope and multiple filter options\*

\*Available in Connected Components Workbench software version 20 or later

Name	Comment	Data Type	Dimension	Alias	Project Value	Initial Value
> Test_var1	B1	BOOL	[0..7]			
Test_var2	B2	BOOL				
> Test_var3	B1	INT				
Test_var4	B1	BOOL				
Test_var5	B2	BOOL				
		BOOL	[0..15]			
		INT				
		BOOL				
		BOOL				

Name	Data Type	Dimension	Memory Size
Test_var1	BOOL	Var	
Test_var2	BOOL	Var	

Task_Info	Task_Volume	Task_Low	Task_High
Task_Info0			
Task_Info1			
Task_Info2			
Task_Info3			
Task_Info4			
Task_Info5			
Task_Info6			
Task_Info7			
Task_Volume	REAL		
Task_Low	LowAlarm	BOOL	
Task_High	HighAlarm	BOOL	
None			

Create multiple tags in one click with Quick Declaration

Monitor individual status through Bit addressing for all integer-type variables

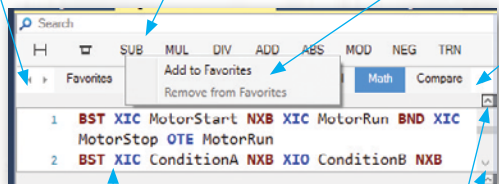
# Ladder Diagram Editor

## Instruction Toolbar

## Scroll tabs

Mouse over Instruction  
for description

Right-click Instruction to Add to  
or Remove from Favorites



Click to show list of all Instruction Groups

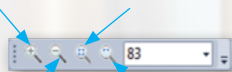
Hit **TAB** key after entering Instruction name to auto-complete Branch Start (BST) and to auto-create Instruction Block instance names

Click to hide or unhide  
Instruction Toolbar or  
ASCII Text Input Pane

## Zoom

Zoom In

Zoom to Fit All



Zoom Out

Zoom to Page Width

- If toolbars are not visible, right-click on area where toolbars are to enable toolbars. From there, enable Zoom
- Zoom is also available by holding down **Ctrl** and using mouse wheel

## Variables

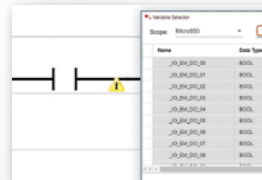
Single-click to select variables



Double-click to declare new variable

## Keyboard Shortcuts

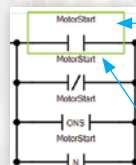
**Ctrl-R** enables/disables Variable Selector after drag-and-drop of Instructions



### Status Bar

Manual-Input Enable

Auto-Input Enable

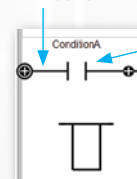


- Select Instruction and hit **F1** to invoke context sensitive help

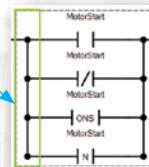
Select Contact  
or Coil and hit  
**SPACEBAR** to  
scroll through  
available types

## Branching

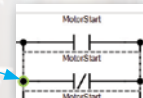
### Drop Branch before Instruction



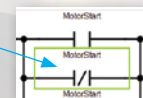
- Select the Instruction and press **Ctrl+7** to create the Branch



Whole  
Branch is  
selected



Single level  
of Branch -  
selected



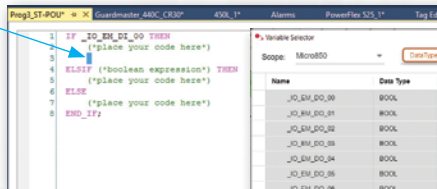
Only  
Instruction  
selected



# Structured Text Editor

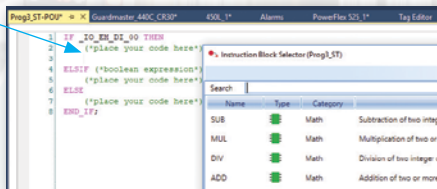
## Variable Selector

Ctrl-I brings up the Variable Selector so you can select a variable instead of typing it



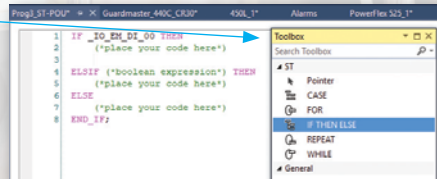
## Instruction Block Selector

Ctrl-R brings up the Block Selector



## Structured Text Editor Toolbox

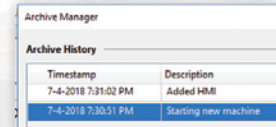
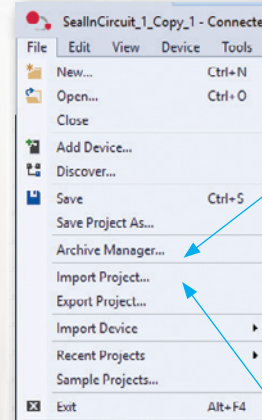
Drag-and-drop of language elements



# Archive Manager and Import/Export Project

## Archive Manager

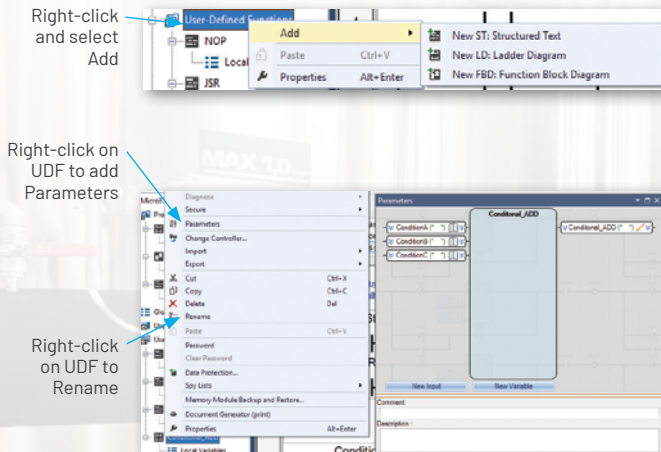
Create and delete archive  
Requires Developer Edition



## Import/Export Project

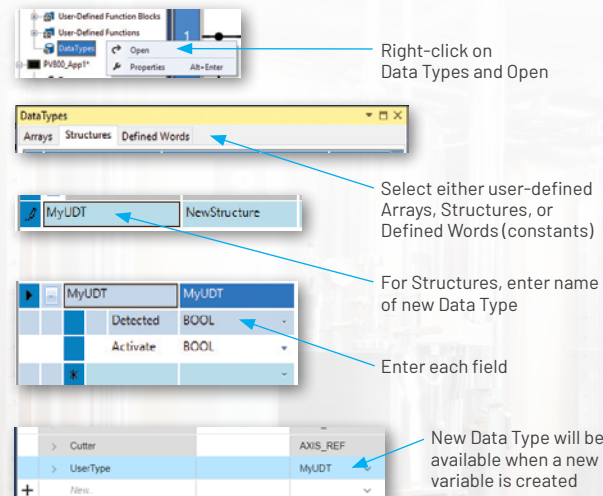
Import or Export the entire Project, including archives, as a CCWARC file type





# User-defined Function (UDF) or User-defined Function Block (UDFB)



# User-defined Data Type (UDT)

Requires Developer Edition



Connect with us.    

rockwellautomation.com

expanding human possibility<sup>®</sup>

AMERICAS: Rockwell Automation, 1201 South Second Street, Milwaukee, WI 53204-2496 USA, Tel: (1) 414.382.2000

EUROPE/MIDDLE EAST/AFRICA: Rockwell Automation NV, Pegasus Park, De Kleetlaan 12a, 1831 Diegem, Belgium, Tel: (32) 2663 0600

ASIA PACIFIC: Rockwell Automation SEA Pte Ltd, 2 Corporation Road, #04-05, Main Lobby, Corporation Place, Singapore 618494, Tel: (65) 6510 6608

UNITED KINGDOM: Rockwell Automation Ltd., Pitfield, Kiln Farm, Milton Keynes, MK11 3DR, United Kingdom, Tel: (44)(1908) 838-800

Allen-Bradley, ControlFLASH, ControlFLASH Plus, Connected Components Workbench, expanding human possibility, FactoryTalk, Guardmaster, Kinetix, Micro800, Micro850, Micro870, PanelView, PowerFlex, PowerFlex Automation, and TechConnect are trademarks of Rockwell Automation, Inc. Trademarks not belonging to Rockwell Automation are property of their respective companies.