



Visualization Solutions

Graphic Terminals
Tethered Operator Terminals
Industrial Computers and Monitors
FactoryTalk Software



Allen-Bradley

by ROCKWELL AUTOMATION

Selection Guide

What's Inside

Topic	Page
Add Visualization to Your Control System	3
Graphic Terminals	7
Industrial Computers, Monitors, and Thin Clients	13
Related Software	17
Additional Resources	21

What's New

To help you optimize productivity, Rockwell Automation is expanding its product line by offering the following new products:

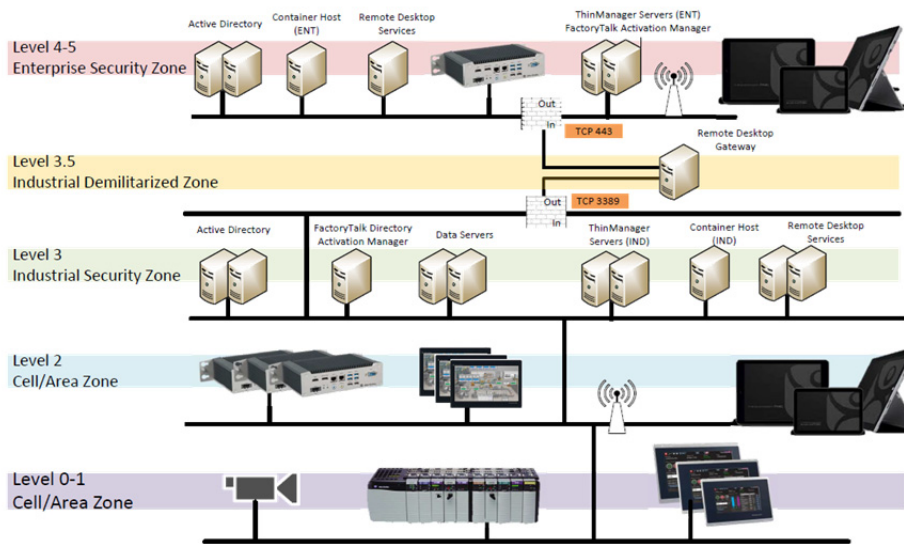
- Stainless steel versions of the 9-in touch-only and 12-inch touch-only units in the PanelView 5510 family of terminals. For more detailed information about these terminals, including complete technical specifications, certifications, and environmental specifications, see PanelView 5510 Terminals Specifications Technical Data, publication [2715P-TD001](#).
- The ASEM™ 6300 portfolio of open architecture industrial PCs, thin clients, and monitors, which will be available in the near future. With the huge number of available ASEM 6300 hardware configurations, you have the flexibility to adapt to rapidly changing performance requirements. For more detailed information about these terminals, including complete technical specifications, certifications, and environmental specifications, see the ASEM 6300 Industrial PCs, Thin Clients, and Monitors Specifications Technical Data, publication [6300-TD001](#), when it becomes available.

Add Visualization to Your Control System

Visualization and human-machine interface (HMI) solutions help you address your productivity, innovation, and globalization needs. Our portfolio provides a consistent look and feel for electronic operator interface terminals, distributed client/server HMI, and information software. Programming tools and advanced software applications include remote access and data analysis to accelerate development and improve efficiency.

Visualization products from Rockwell Automation comprise a suite of scalable HMI software and operator interface hardware that provide plant floor machine operators, supervisors, engineers, and business managers a window to critical data and production and process information. All of this information can be obtained from the plant floor and displayed on a local HMI or remotely on a web browser.

- Graphic terminals offer rugged electronic interface solutions in various sizes, operator input methods, and configurations. These robust devices are fully packaged (hardware, software, and communications) and tested for human-machine interface operation.
- Tethered operator terminals are mobile devices that help increase operator productivity and provide a safe production environment. The mobile operator interface runs the Windows® Embedded Standard 7 operating system, but allows reuse of FactoryTalk® View ME and FactoryTalk® View Studio applications.
- Industrial computers and monitors provide a rugged industrial computing platform for critical infrastructure and analytical solutions.



This selection guide is meant to help you make initial decisions for the visualization products that are best suited for your system requirements. For detailed technical specifications, certifications, and environmental specifications, see the documentation links in each product section.

For assistance and validation in final product selections, consider using the Configuration and Selection tools available at <http://www.rockwellautomation.com/en/e-tools/index.html>.

Visualization Solutions

Our smart HMI products consist of graphic terminals, industrial PCs, monitors, and software.

Graphic Terminals

Our Graphic Terminals offer rugged electronic interface solutions in various sizes, operator input methods, memory options, and configurations. These robust devices are fully packaged (hardware, software, and communications) and tested for HMI operation.

Application Requirements	Select
Can be used with multiple controllers Enhanced integration with Studio 5000® and high-speed HMI buttons for jogging applications Preconfigured navigation menus Scalable graphics User-friendly workflows	PanelView™ 5000 terminal see page 8
Can be used with multiple controllers Integration with Studio 5000 Integration with FactoryTalk View Connectivity to third-party devices and controllers	PanelView 7 Plus terminal see page 9
Self-enclosed panel, IP66 protection Hardwired E-stop	ArmorView Plus 7 terminal see page 9
Standalone machine Micro and small controllers	PanelView 800 terminal see page 11

Tethered Operator Terminals

Our MobileView™ Tethered Operator Terminals are mobile devices that help increase operator productivity and provide a safe production environment. The mobile operator interface supports the reuse of FactoryTalk View ME and FactoryTalk View Studio applications to help reduce development costs. For more information about these terminals, see [page 11](#).

Industrial Computers and Monitors

Visualization and computing products provide windows into critical production and process information and enterprise data. Across every type of industry, application and manufacturing environment, these products accelerate development and enhance operation.

Application Requirements	Select
High-performance HMI solution in an industrial environment Gateway and data logging applications Fully compatible with FactoryTalk View	ASEM™ 6300B box PCs ASEM 6300P panel PCs ASEM 6300M monitors see page 13
Fully compatible with FactoryTalk View SE and PlantPAx® templates Hazardous locations Conformal coating	VersaView® 5400 PCs see page 15
Process and large applications Conformal coating	6181P industrial computers see page 15
Hazardous locations Class 1 Division 2 / ATEX harsh environments	6181X industrial computers see page 15






Thin Clients

Thin Clients work with ThinManager® software for centrally managed content delivery. Integrated display and non-display versions are available.

Application Requirements	Select
Centralized application and security management Distributed system with low-cost, low-maintenance client devices	ASEM 6300T thin clients see page 16
Centralized application and security management Distributed system with low-cost, low-maintenance client devices Hazardous locations Conformal coating	VersaView 5200 thin clients see page 16

Notes:

PanelView™ graphic terminals offer rugged electronic interface solutions in various sizes, operator input methods, memory options, and configurations. These robust devices are fully packaged (hardware, software, and communications) and tested for human-machine interface (HMI) operation.

	Bulletin 2715P, 2713P PanelView 5000	Bulletin 2711P PanelView Plus 7 Performance	Bulletin 2711P ArmorView Plus 7	Bulletin 2711P PanelView Plus 7 Standard	Bulletin 2711R PanelView 800
					
Supported Controllers					
CompactLogix™ 5380 and ControlLogix® 5580	✓	✓	✓	✓	CompactLogix 5380 only
CompactLogix 5370 and ControlLogix 5570	✓	✓	✓	✓	CompactLogix 5370 only
CompactLogix 5480	✓	✓	✓	✓	—
Micro800™	—	✓	✓	✓	✓
MicroLogix™	—	✓	✓	✓	✓
Support for multiple controllers	✓ ⁽¹⁾	✓	✓	—	—
Development Environment Software					
Studio 5000 View Designer®	✓	—	—	—	—
FactoryTalk® View Machine Edition (ME)	—	3.2, 4, 5.x, 6.x, 7, 8.x, 9.x, 10.x, 11.x, 12.x	3.2, 4, 5.x, 6.x, 7, 8.x, 9.x, 10.x, 11.x, 12.x	5.1, 6.x, 7.x, 8.x, 9.x, 10.x, 11.x, 12.x	—
Connected Components Workbench™	—	—	—	—	7, 8.x, 9.x, 10.x, 11.x, 12.x, 13.x, 20.x
Remote Access					
Web HMI Server (Remote Viewing/Control)	—	FactoryTalk Viewpoint	FactoryTalk Viewpoint	FactoryTalk Viewpoint	—
VNC Server	✓	✓	✓	✓	✓
FTP Server	—	✓	✓	—	✓
Remote Desktop Client	—	✓	✓	✓	—
VNC Client	—	✓	✓	✓	—
Environmental Options					
Conformal Coating	✓	✓	✓	✓	—
On-Machine™	—	—	✓	—	—
Stainless-steel	✓	✓	—	—	—
Communication					
Protocols	EtherNet/IP™ with DLR	EtherNet/IP with DLR Kepware Server	EtherNet/IP with DLR Kepware® Server	EtherNet/IP with DLR Kepware Server	EtherNet/IP, DF1 DH-485, Modbus (ASCII, RTU, TCP)

(1) Support for multiple controllers is only available with the 2715P (PanelView 5510) terminal. The 2713P (PanelView 5310) terminal only supports a single controller.

PanelView 5000 Terminals

PanelView™ 5000 graphic terminals (Bulletins 2715P, 2713P) offer an intuitive, modern design and provide enhanced Logix integration that uses Studio 5000 View Designer® software (for information about software, see [Related Software on page 17](#)). This integration lets engineers enter configurations, such as tags and alarms, once and use them for the entire automation design. It also helps you build modern applications with high-speed HMI buttons for jogging applications, scalable vector graphics, and a pre-configured system banner that provides diagnostic information.



Feature	PanelView 5310	PanelView 5510
CPU	X86 Single-Core	X86 Dual-Core
Displays	100 screens	500 screens
Controllers	1 controller ⁽¹⁾	4 controllers ⁽¹⁾
Alarms	4000 alarms	16,000 alarms (4000 per controller) ⁽²⁾
Ethernet	10/100 single Ethernet port	Two 10/100 Base-T, Auto MDI/MDI-X Ethernet ports that support DLR (Device Level Ring), linear, or star network topologies
Temperature, operating	0...50 °C (32...122 °F)	7-inch...15-inch terminals: 0...55 °C (32...131 °F) 19-inch terminals: 0...50 °C (32...122 °F)
Navigation button	Software only	Hardware and Software

(1) ControlLogix 5570, 5580 and CompactLogix 5370, 5380 or 5480 controllers running V27 firmware or later over an EtherNet/IP network.

(2) The PanelView 5510 can support up to 4000 Logix tag-based alarms or up to 1000 Logix instruction-based alarm per controller. Use Logix Designer v32 or later for Logix tag-based alarms.

All PanelView 5000 terminals include the following:

- Tightly integrated control and design environment for information sharing between the terminal and the Logix platforms
- Studio 5000® environment provides one point of access for both Studio 5000 View Designer® and Studio 5000 Logix Designer® applications
- PDF viewer to view PDF files included as part of the View Designer project.
- Displays with Automatic Diagnostics automatically show control system status when used with Logix controllers, version 33 and later.
- Conformal coating available for all terminal sizes
- Virtual Network Computing (VNC) server
- Stainless steel versions available for PanelView 5510 9-in. and 12-in. wide units. All sizes available with conformal coating and brandless options.
- HTML5-compatible web browser for displaying web pages, mp4 videos, and IP camera streams (PanelView 5510 terminals only with version 8 firmware, or later)

For accessories, technical specifications, certifications, and environmental specifications on the PanelView 5510 terminals, see the PanelView 5510 Terminals Specifications Technical Data, publication [2715P-TD001](#).

For accessories, technical specifications, certifications, and environmental specifications on the PanelView 5310 terminals, refer to the PanelView 5310 Specifications Technical Data, publication [2713P-TD001](#).

PanelView Plus 7 Performance Terminals

PanelView Plus 7 (Bulletin 2711P) performance terminals are operator interface terminals. They monitor and control devices that are attached to ControlLogix and CompactLogix controllers on an EtherNet/IP network. Animated graphic and text displays provide operators a view into the operating state of a machine or process. Operators interact with the control system by using touch screen or keypad input. For information about software, see [Related Software on page 17](#).



Features include the following:

- FactoryTalk View Machine Edition software provides a familiar environment for creating HMI applications.
- FactoryTalk ViewPoint web server enables remote web browsers to view and interact with user-generated displays.
- Windows 10 IOT LTSC Core operating system (Series B only). Series A terminals come with Windows CE.
- Connection to ControlLogix or CompactLogix controllers.
- Ethernet communication that can support Device Level Ring (DLR), linear, or star network topologies.
- Web browser (full-screen only).
- VNC Client and Server.
- Conformal-coating available for all DC power, touch-only terminals, and the 15-inch DC power, touch/keypad terminal.
- Stainless steel, hygienic, brandless, DC-power, and conformal-coating are available for the 9-in. wide-screen, touch-only units and the 12-in. wide-screen, touch-only units. Stainless steel versions of the 10-in and 15-inch touch-only units will be available in the near future.

For information about software, see [Related Software on page 17](#).

For accessories, technical specifications, certifications, and environmental specifications on the PanelView Plus 7 Performance terminals, refer to the PanelView Plus 7 Performance Terminals Technical Data, publication [2711P-TD009](#).

ArmorView Plus 7 Terminals

The ArmorView Plus 7 terminal (Bulletin 2711P) provides NEMA4/IP66 ingress protection. You can mount the terminal on an arm mount system, a wall, or a pedestal. An optional VESA kit is available for operators who prefer to mount the terminal on a VESA-compatible bracket (purchased separately).

The ArmorView Plus 7 terminal is based on the PanelView™ Plus 7 Performance terminal. The ArmorView Plus 7 terminal also includes lighted, twist-to release E-stop with N.O., N.C., and self-monitoring contact blocks.



For information about software, see [Related Software on page 17](#).

For accessories, technical specifications, certifications, and environmental specifications on the PanelView Plus 7 Performance terminals and the ArmorView Plus 7 terminal, refer to the PanelView Plus 7 Performance Terminals Technical Data, publication [2711P-TD009](#).

PanelView Plus 7 Standard Terminals

PanelView™ Plus 7 Standard terminals (Bulletin 2711P) are operator interface devices. They monitor and control devices that are attached to ControlLogix® and CompactLogix™ controllers on an EtherNet/IP network. Animated graphic and text displays provide operators a view into the operating state of a machine or process. Operators interact with the control system by using touch screen input.



PanelView Plus 7 Standard terminals include these features:

- Terminal functionality permits connection to 1 controller, 100 screens, and 500 alarms.
- FactoryTalk View Machine Edition software provides a familiar environment for creating HMI applications.
- Windows CE operating system with desktop access for configuration and third-party applications.
- Ethernet communication that supports linear, star, and ring network topologies.
- PDF viewer to access PDF files that are stored on the terminal.
- Screen size options down to 4" diagonal.
- Terminals are available with an Allen-Bradley® label, or with no label.

For information about software, see [Related Software on page 17](#)).

For accessories, technical specifications, certifications, and environmental specifications on the PanelView Plus 7 Standard terminals, refer to the PanelView Plus 7 Standard Terminals Technical Data, publication [2711P-TD008](#).

PanelView 800 Terminals

The PanelView 800 graphic terminals (Bulletin 2711R) features a full line of 4-inch, 7-inch, and 10-inch displays. Preferred integration with Allen-Bradley® MicroLogix™, Micro800®, CompactLogix™ 5370, and SLC™ 500 families of logic controllers offers a control and visualization solution for various applications. The PanelView 800 platform includes the Connected Components Workbench™ software as the common programming software.



Other key features include the ability to do the following:

- Secure information on screens with user name and password protection.
- Remote monitoring with Virtual Network Computing (VNC) server.
- Alert operators with alarm messages that include embedded variables and an alarm status/history.
- Upload and download groups of data or parameter settings within the recipe feature.
- Use Connected Components Workbench software, the integrated design and configuration software that offers HMI programming and controller programming within the same common platform.

For information about software, see [Related Software on page 17](#)).

For accessories, technical specifications, certifications, and environmental specifications on the PanelView 800 terminals, refer to the PanelView 800 Terminals Technical Data, publication [2711R-TD001](#).

MobileView Tethered Operator Terminals

The MobileView™ terminals (Bulletin 2711T) have a rugged design with Microsoft® Windows® 7 Embedded Standard. The MobileView terminal features include a 3-position enable switch, touch and function keys, and stop push buttons. These features let operators access the safety system of the machine and the general interface to the control system.

The MobileView terminals are ideal for various applications, including:

- Operator panel for machines and plants
- Teach and programming panel for robots
- Test, maintenance, and startup



The MobileView terminals adapt to specific applications by using configurable operating and control elements. A cable and junction box are required for the operation of a MobileView terminal.

For accessories, technical specifications, certifications, and environmental specifications on the MobileView tethered operator terminals, refer to the MobileView Tethered Operator Terminals and Junction Boxes Technical Data, publication [2711T-TD001](#).



Notes:

ASEM 6300 Industrial PCs

Combine ASEM™ 6300 industrial PCs and thin clients with FactoryTalk® View human-machine interface (HMI) software and ThinManager® thin-client management software to create a complete visualization system.

The industrial computers come as non-display (box PC) or integrated display (panel PC) form factors and offer solutions for the physical limitations and requirements of your environment.

ASEM 6300 Industrial PC Features

Feature	ASEM 6300B Box PCs	ASEM 6300P Panel PCs
		
Processor	Atom, Celeron processors or Core i3, i5 and i7 dual and quad core 7th generation 64-bit processors	Core i3, i5, and i7 Intel processors
System memory - RAM	Up to 32 GB	Up to 32 GB
Mass storage	Up to 1 TB	Up to 1 TB
Front panel	—	Aluminum Aluminum True Flat Aluminum and Glass True Flat Aluminum glass Stainless steel
Protection grade options	—	IP65 IP66
Ports	Single DisplayPort - 2 x USB 3.0 (Type-A) Dual DisplayPort - 4 x USB 3.0 (Type-A)	USB 3.0 (Type-A) USB 2.0 (Type-A)
Power	24V DC (18...32V DC) isolated	24V DC (18V to 32V DC) isolated
Mounting	DIN rail mount Wall mount (single Display Port model)	Panel mount

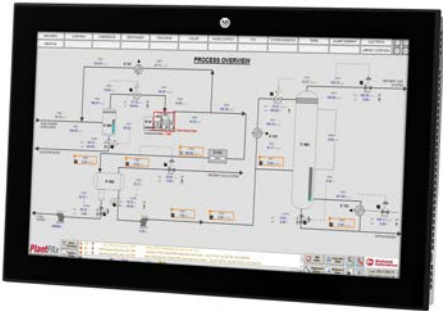
For accessories, technical specifications, certifications, and environmental specifications on the ASEM 6300 products, see the ASEM 6300 Industrial PCs, Thin Clients, and Monitors Specifications Technical Data, publication [6300-TD001](#).

ASEM 6300 Industrial Monitors

The ASEM 6300M industrial monitors include a ten-point multitouch screen that can also be operated with gloves. The touch screens are pre-calibrated so that recalibration is not necessary. These monitors are optimized to work with the ASEM 6300 industrial PCs and thin clients to create a visualization, maintenance, control, or information computing solution.

ASEM 6300M Industrial Monitor Features

Feature	ASEM 6300M Monitors
Front panel	Aluminum Aluminum glass Stainless-steel
Protection grade options	IP65 IP66K IP69K
Video input	DVI DisplayPort
Ports	USB 2.0
Power	24V DC Isolated 100V / 230V AC






For accessories, technical specifications, certifications, and environmental specifications on the ASEM 6300 products, see the ASEM 6300 Industrial PCs, Thin Clients, and Monitors Specifications Technical Data, publication [6300-TD001](#).

Industrial Computers for Specific Environments

Our industrial computers offer solutions for the physical limitations and requirements of your environment. Non-display computers provide various options in form factors, RAM, storage, performance, operating temperatures and optical drives. Integrated display computers are available in different screen sizes, storage options, performance packages, and models with built-in keypads.



Industrial Computers Features



Feature	VersaView® 5400 Industrial Computers	6181P Integrated-Display Industrial Computers	6181X Hazardous Location Computers
			
Processor	Intel® quad core Atom E3845; 1.91 Ghz	Performance: Intel Core™ i3-4102E Advanced: Intel Core i7-4700EQ	Intel Core i3-5010U
System memory - RAM	4 GB	Performance: DDR3 (4/16) Advanced: DDR3 (8/16)	DDR3 (8/16)
Mass storage	128 GB MLC SSD	32 GB SLC™, 2.5-in. SATA or 256 GB MLC, 2.5-in	128 GB MLC, 2.5-in
Ports	1x DisplayPort 1x VGA (non-display only) 2x USB 2.0 1x USB 3.0 1x RS-232 2x 1 Gb Ethernet	RS-232 USB 3.0 Ethernet LAN, 1 Gb DVI DisplayPort	RS-232 USB 2.0 Ethernet LAN, 1 Gb DVI DisplayPort
Power	24V DC	AC or DC	DC
Mounting	<ul style="list-style-type: none"> • Panel mount (display models) • DIN rail (non-display models) • VESA (IP20) • Bookshelf • VESA • Machine 	<ul style="list-style-type: none"> • Panel mount (display models) • Wall mount (non-display models) • Table • Bookshelf • Machine 	<ul style="list-style-type: none"> • Panel mount (display models) • Wall mount (non-display models)

For accessories, technical specifications, certifications, and environmental specifications, see the Industrial Computers and Monitors Specifications Technical Data, publication [IC-TD001](#).

Thin Clients

The thin clients are ideal for ThinManager® distributed applications. You can have multiple thin clients configured across your plant or facility with various roles with the convenience of having them all maintained by the ThinManager server. All content remains on the server so downtime is reduced if a failure occurs.

Thin Client Features

Feature	ASEM 6300T Thin Clients	VersaView 5200 Thin Clients
		
Processor	Intel Atom Celeron Apollo Lake platform with x7-E3950 1.6 GHz processors	Intel single core Atom E3815; 1.46 Ghz
System memory - RAM	4 GB/8 GB	2 GB
Mass storage	None	None
Ports	Single DisplayPort - 2 x USB 3.0 (Type-A) Dual DisplayPort - 4 x USB 3.0 (Type-A)	1x DisplayPort 2x USB 2.0 1x USB 3.0 1x RS-232 2x 1 Gb Ethernet
Power	24V DC (18...32V DC) isolated	24V DC
Mounting	DIN rail mount Wall mount (single Display Port model)	Wall, VESA, DIN Rail, Bookshelf, Machine

For accessories, technical specifications, certifications, and environmental specifications on the ASEM 6300 products, see the ASEM 6300 Industrial PCs, Thin Clients, and Monitors Specifications Technical Data, publication [6300-TD001](#).

For technical specifications, certifications, and environmental specifications on the VersaView computers, see the Industrial Computers and Monitors Specifications Technical Data, publication [IC-TD001](#).

With the [myRockwell Software Portal](#) from Rockwell Automation, you can find our simplified and flexible software solutions all in a familiar online ecommerce experience. The portal offers:

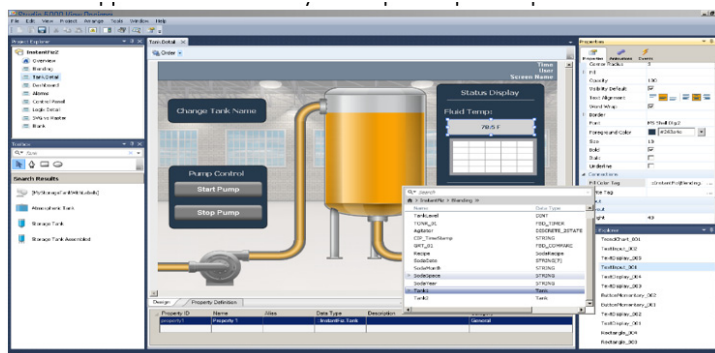
- Web-based Quoting and License Management
- Recommended Products and Add-ons
- Simple and Dynamic Software Activations
- Access to Software Updates

Studio 5000 View Designer

Studio 5000 View Designer® software is the design environment for the PanelView® 5000 family of operator terminals. The integration of the PanelView 5000 terminals with Studio 5000 View Designer software helps build modern applications more easily and improve operator performance.

The View Designer application provides an intuitive, modern design environment and enhances integration between the control system and operator interface to improve programming efficiency and runtime performance.

- Preconfigured banner, alarm summary and diagnostic displays help reduce design time
- Simplify engineering with shared tags between HMI and controller
- Eliminate alarm programming and reduce network traffic with Logix-tag based alarms
- High-speed button control provides quick response and feedback for machine jogging applications
- Create custom, re-usable add-on graphics to save engineering time and promote consistency
- Configure the runtime web browser to display web pages, HTML help files, videos, and IP camera streams. Display content stored locally on an SD card or USB drive, on a local server, or on the Internet.
- Emulation capabilities enable users to test run a project without downloading to decrease overall project risks
- Data logging and historical trending features show historical data immediately when the screen is displayed, helping decrease troubleshooting time
- Built-in VNC server enables a remote VNC client for monitoring and troubleshooting
- Studio 5000 View Designer is included, along with Studio 5000 Logix Designer, as part of Studio 5000. No additional licensing or activation is needed.



For product options, see Studio 5000 Ordering Guide, [9324-QR001](#)

FactoryTalk View – HMI Software

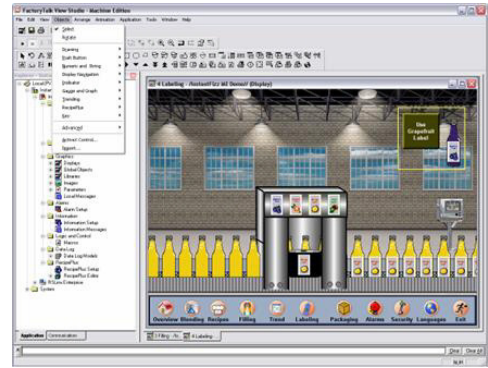
FactoryTalk® View performance and visibility HMI software, including FactoryTalk View Machine Edition, FactoryTalk View Site Edition, FactoryTalk ViewPoint, and FactoryTalk View Studio are designed with a common look, feel, and navigation to help speed HMI development and training time.

Supporting the Rockwell Automation® Integrated Architecture® platform, FactoryTalk View software is part of the scalable and unified suite of monitoring and control solutions that are designed to span machine-level applications through supervisory level HMI applications across a network. This suite of HMI software products offers you a common development environment, application reuse, and architecture to increase productivity, reduce operation costs, and improve quality.

For product options, see FactoryTalk View Ordering Guide, [FTALK-QR003](#)

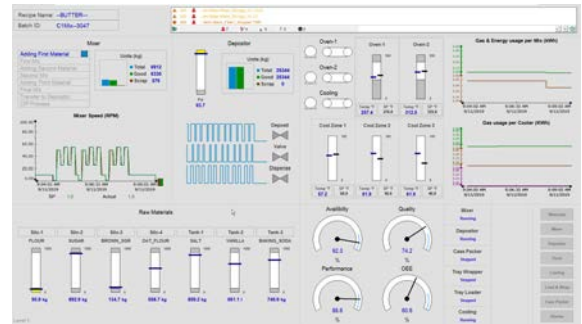
FactoryTalk View Machine Edition Software

FactoryTalk View Machine Edition (ME) software is the runtime environment for HMI applications. FactoryTalk View ME software is automatically installed and activated on PanelView Plus terminals. FactoryTalk View ME software activation is required when running HMI applications on industrial computers. FactoryTalk View ME software supports both open and embedded operator interface solutions for monitoring and controlling individual machines or small processes.



FactoryTalk View Supervisory Edition Software

FactoryTalk View Site Edition (SE) software is a supervisory-level HMI software for monitoring and controlling distributed-server/multi-user applications. FactoryTalk View SE scales from a stand-alone HMI system to a distributed visualization solution. FactoryTalk View SE software enables you to take advantage of mobility, virtualization to meet HMI needs in process, batch, and discrete applications and deliver critical visibility when and where you need it.



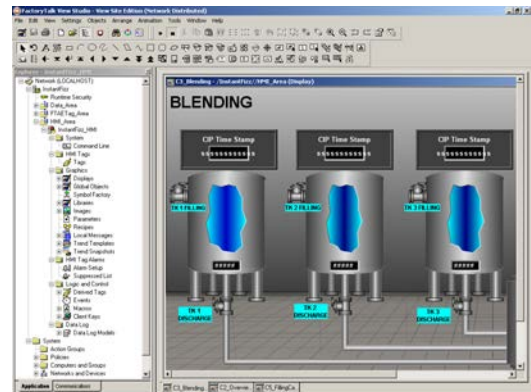
FactoryTalk ViewPoint Software

An add-on to FactoryTalk View SE software and PanelView Plus 7 terminals, FactoryTalk ViewPoint software provides on-demand access to important information about your plant or process from a web browser. Plant managers, supervisors, OEMs, system integrators, and other key stakeholders can now access, monitor, and interact with plant floor operations from virtually any location. The thin-client configuration means no client software to install and maintain:

- Fully scalable, animated web applications viewable in the office, at home, or on the road.
- Gives managers, OEMs, and system integrators read and write capability to both view and control real-time plant floor operations by logging in via an internet browser.
- Gain fast access to real-time information by using a standard web browser.
- Supports multiple browsers and client devices for increased flexibility.
- Lets FactoryTalk View projects be web-enabled without requiring application changes.

FactoryTalk View Studio Software

FactoryTalk View ME and FactoryTalk View SE software share a common design environment called FactoryTalk View Studio for creating applications. The ability to edit and reuse projects in FactoryTalk View Studio improves portability between embedded machine and supervisory HMI systems. With FactoryTalk View software, all products in the suite are built on the same integrated, scalable architecture. Application developers can import entire machine-level applications into supervisory-level applications or drag individual components and drop them right into supervisory projects, which saves development time and reduces engineering and training costs. Runtime files can be generated to run on a PanelView Plus terminal or industrial computer.



Thin Client Management Software

ThinManager® thin client management software allows control and security in a sustainable and scalable platform regardless of the size of your industrial environment or number of facilities. The thin client architecture gives users the applications and tools familiar to them in a format that reduces management and maintenance costs while it increases security. ThinManager software acts as a centralized management solution that seamlessly integrates with industrial computers and thin clients.

Administrators can deliver multiple applications, with customized layouts to any terminal. Content can be easily displayed across multiple monitors and touchscreens or securely delivered to mobile devices, based on the location of the user. ThinManager software also supports multiple forms of user authentication. Coming in the near future, ThinManager will be available as part of the ThinManager Logix PinPoint™ solution, which bundles ThinManager with FactoryTalk View SE and Studio 5000 Logix Designer.

ThinManager increases security by never storing content on end devices. All terminals managed by ThinManager connect to centralized servers (HMI, MES, CMMS, etc.) and only access content when authenticated by ThinManager. ThinManager-managed terminals can also be replaced in under two minutes, seriously reducing unplanned downtime in your industrial facility.

Notes:

Additional Resources

These documents contain additional information concerning related products from Rockwell Automation.

Resource	Description
PanelView 5310 Terminals Specifications Technical Data, publication 2713P-TD001	Provides technical specifications, certifications, and environmental specifications for the PanelView 5310 terminals.
PanelView 5510 Terminals Specifications Technical Data, publication 2715P-TD001	Provides technical specifications, certifications, and environmental specifications for the PanelView 5510 terminals.
PanelView Plus 7 Performance Terminals Technical Data, publication 2711P-TD009	Provides technical specifications, certifications, and environmental specifications for the PanelView Plus 7 Performance terminals.
PanelView Plus 7 Standard Terminals Technical Data, publication 2711P-TD008	Provides technical specifications, certifications, and environmental specifications for the PanelView Plus 7 Standard terminals.
MobileView Tethered Operator Terminal Technical Data, publication 2711T-TD001	Provides technical specifications, certifications, and environmental specifications for the MobileView tethered operator terminals.
PanelView 800 Terminals Technical Data, publication 2711R-TD001	Provides technical specifications, certifications, and environmental specifications for the PanelView 800 terminals.
Industrial Computers and Monitors Specifications Technical Data, publication IC-TD001	Provides technical specifications, certifications, and environmental specifications for the industrial computers and monitors.
PanelView Plus 6 Terminals to PanelView Plus 7 Terminals Catalog Number Conversions Migration Guide, publication 2711P-AP004	Provides information on how to convert PanelView Plus 6 terminals to the new generation terminals: PanelView Plus 7 Performance terminals and PanelView Plus 7 Standard terminals.
Industrial Automation Wiring and Grounding Guidelines, publication 1770-4.1	Provides general guidelines for installing a Rockwell Automation industrial system.
Product Certifications website, rok.auto/certifications .	Provides declarations of conformity, certificates, and other certification details.

You can view or download publications at rok.auto/literature.

Rockwell Automation Support

Use these resources to access support information.

Technical Support Center	Find help with how-to videos, FAQs, chat, user forums, and product notification updates.	rok.auto/support
Knowledgebase	Access Knowledgebase articles.	rok.auto/knowledgebase
Local Technical Support Phone Numbers	Locate the telephone number for your country.	rok.auto/phonesupport
Literature Library	Find installation instructions, manuals, brochures, and technical data publications.	rok.auto/literature
Product Compatibility and Download Center (PCDC)	Download firmware, associated files (such as AOP, EDS, and DTM), and access product release notes.	rok.auto/pcdc

Documentation Feedback

Your comments help us serve your documentation needs better. If you have any suggestions on how to improve our content, complete the form at rok.auto/docfeedback.

Allen-Bradley, ASEM, CompactLogix, Connected Components Workbench, ControlLogix, expanding human possibility, FactoryTalk, Integrated Architecture, Micro800, MicroLogix, MobileView, PanelBuilder, PanelView, Rockwell Automation, Rockwell Software, SLC, Studio 5000, Studio 5000 Logix Designer, Studio 5000 View Designer, ThinManager, and VersaView are trademarks of Rockwell Automation, Inc.

EtherNet/IP is a trademark of ODVA, Inc.





Excel, Microsoft, and Windows are trademarks of Microsoft Corporation.

SD is a trademark of SD-3C LLC.

Trademarks not belonging to Rockwell Automation are property of their respective companies.

Rockwell Automation maintains current product environmental compliance information on its website at rok.auto/pec.

Rockwell Otomasyon Ticaret A.Ş. Kar Plaza İş Merkezi E Blok Kat:6 34752, İçerenköy, İstanbul, Tel: +90 (216) 5698400 EEE Yönetmeliğine Uygundur

Connect with us.    

rockwellautomation.com — expanding **human possibility**®

AMERICAS: Rockwell Automation, 1201 South Second Street, Milwaukee, WI 53204-2496 USA, Tel: (1) 414.382.2000, Fax: (1) 414.382.4444

EUROPE/MIDDLE EAST/AFRICA: Rockwell Automation NV, Pegasus Park, De Kleetlaan 12a, 1831 Diegem, Belgium, Tel: (32) 2 663 0600, Fax: (32) 2 663 0640

ASIA PACIFIC: Rockwell Automation, Level 14, Core F, Cyberport 3, 100 Cyberport Road, Hong Kong, Tel: (852) 2887 4788, Fax: (852) 2508 1846

UNITED KINGDOM: Rockwell Automation Ltd. Pitfield, Kiln Farm Milton Keynes, MK11 3DR, United Kingdom, Tel: (44)(1908) 838-800, Fax: (44)(1908) 261-917