



DriveTools32™ Downloads to Bulletin 3500-TBX Interfaces

Precautions



ATTENTION: Risk of injury or equipment damage exists. Unintended motion may be caused by DriveTools32™ downloads to the Bulletin 3500-TBX interface, over-writing the Status Command parameter. This risk exists for the equipment listed in the table below. Follow this procedure to avoid the risk.

Important: This procedure is not required if the DriveManager32 Version 2.50.01 patch is downloaded, installed and verified. Refer to publication 9303-RN001A-EN-P, *Release Note - DriveTools32™ Version 2.50 Software Updates*.

Table A Affected Products

Product Family	Products	Description
Bulletin 1352	Bulletin 1352	AC Scalar Drives
Bulletin 1352	Bulletin 1352	AC Vector Drives
Bulletin 3400	Bulletin 3450	DC Drives
	Bulletin 3460	DC Drives
Bulletin 3500	Bulletin 1352	AC Scalar System Drives
	Bulletin 1352	AC Vector System Drives
Bulletin 3502	Bulletin 3502	LGU

Procedure

1. Verify that the drive has been stopped and is at zero speed with power on.
2. Disconnect the Drive Enable input by removing connector X3 from the TBX board.
3. Open the offline parameter file to be downloaded.
4. Check STATUS_CMD (parm 13) or LGU_CONTROL (parm 13) and change to a value that will stop the drive (4 for 1352 and 3400 drives, 1 for 3502 LGU). Note the parameter view will be different for each type of product.

Figure 1 Off-line View of STATUS_CMD (parm 13) for 1352 AC Scalar Drives and 1352 AC Vector Drives

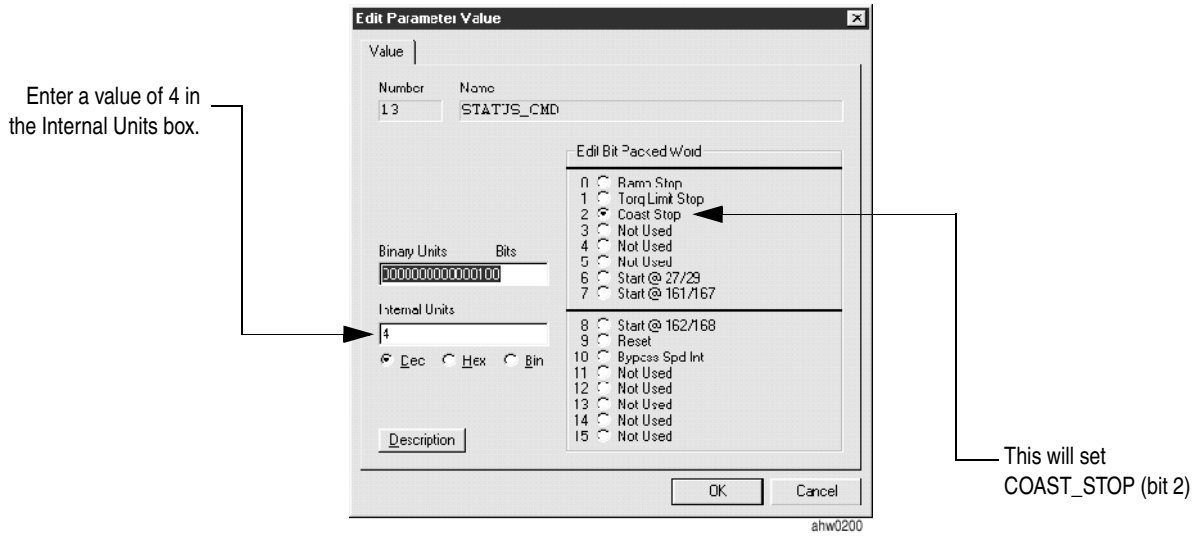


Figure 2 Off-line View of STATUS_CMD (parm 13) for 3400 DC Drives

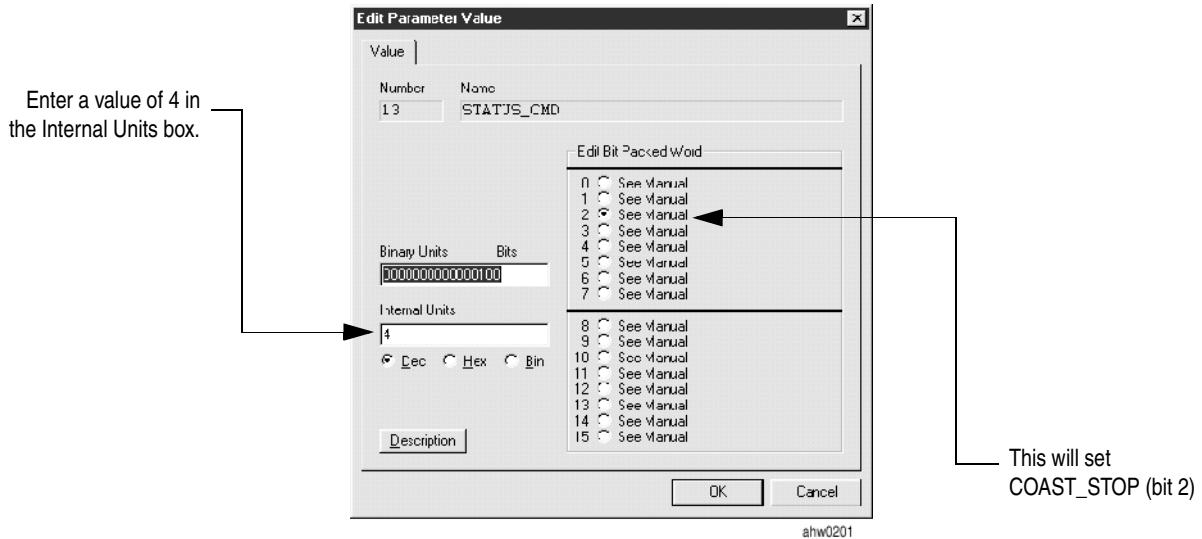
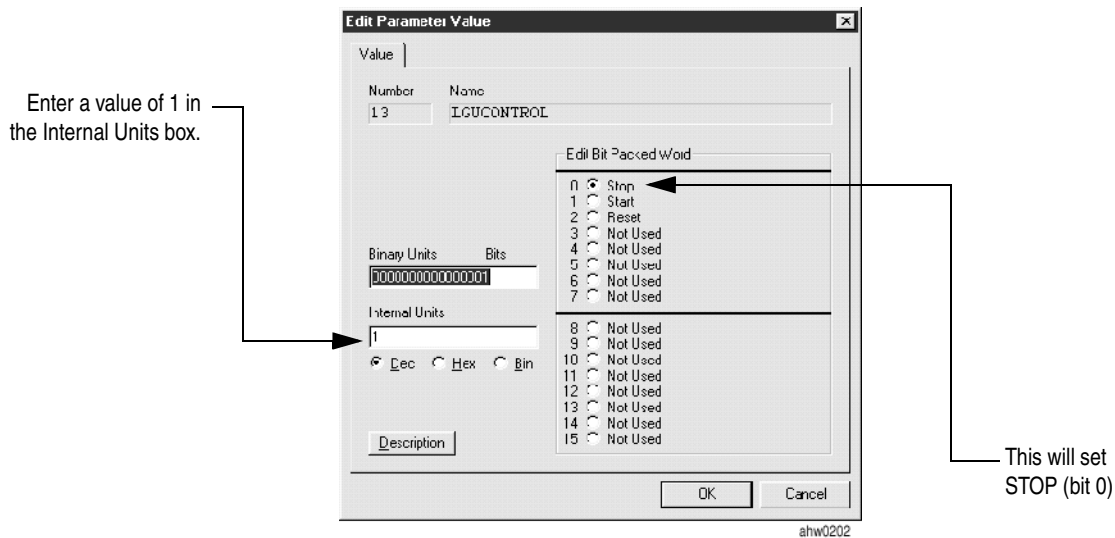


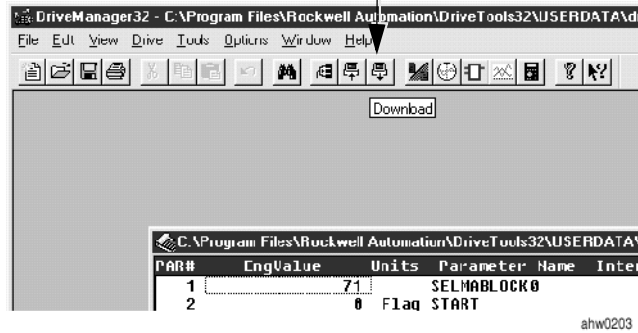
Figure 3 Off-line View of LGU_CONTROL (parm 13) for 3502 LGU

5. Save the parameter file.
6. Verify the value of STATUS_CMD (parm 13) or LGU_CONTROL (parm 13) is still correct (4 for 1352 and 3400 drives, 1 for 3502 LGU).

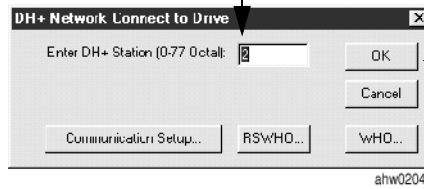
7. Download parameter file to the drive or LGU.

Figure 4 Downloading to a Drive or LGU

Click the Download icon



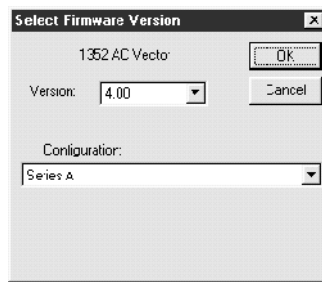
Enter the DH+ station number of the drive or LGU



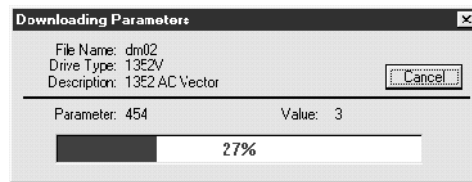
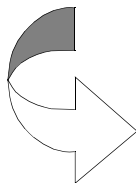
Click the OK button

This window will vary slightly from product to product because of varying product names, versions and configurations.

Note: If the TBX has not requested this information from the drive since the last power cycle, it may take more than one attempt to connect to the drive or LGU.



Click the OK button

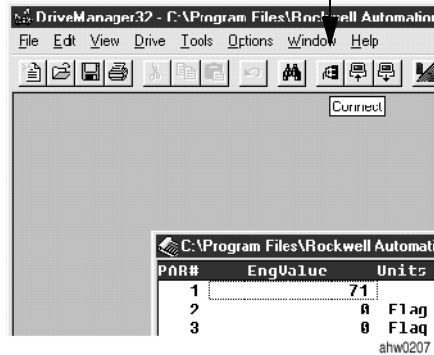


DriveTools should then begin downloading the parameters

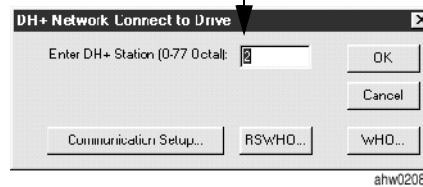
8. After the download is complete, connect and go on-line with the drive or LGU.

Figure 5 Connecting with the Drive or LGU and Going On-line

Click the Connect icon



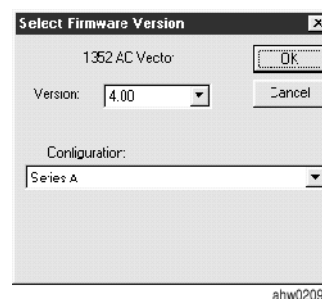
Enter the DH+ station number of the drive or LGU



Click the OK button

This window will vary slightly from product to product because of varying product names, versions and configurations.

Note: If the TBX has not requested this information from the drive since the last power cycle, it may take more than one attempt to connect to the drive or LGU.



Click the OK button

9. Examine STATUS_CMD (parm 13) or LGU_CONTROL (parm 13) and verify that the start bits are off. Note the parameter view will be different for each type of product.

Figure 6 On-line View of STATUS_CMD (parm 13) for 1352 AC Scalar Drives and 1352 AC Vector Drives

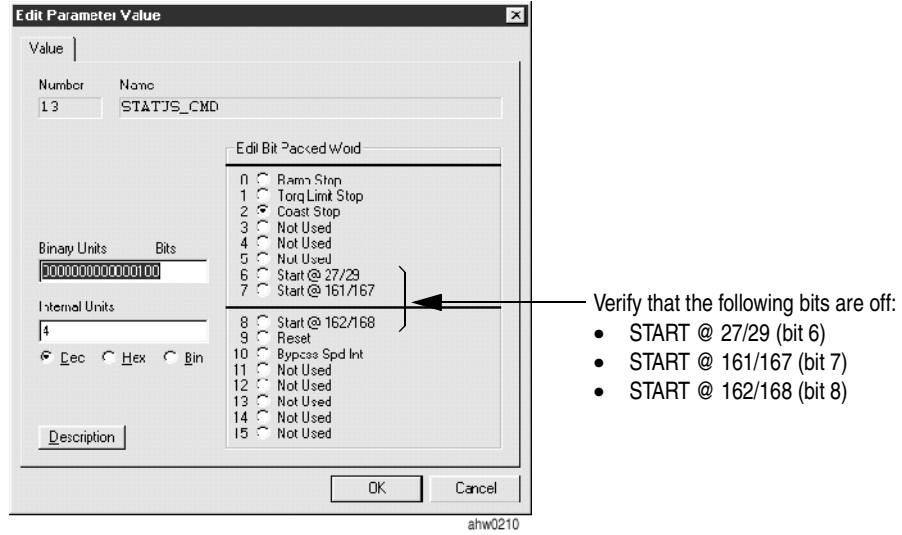


Figure 7 On-line View of STATUS_CMD (parm 13) for 3400 DC Drives

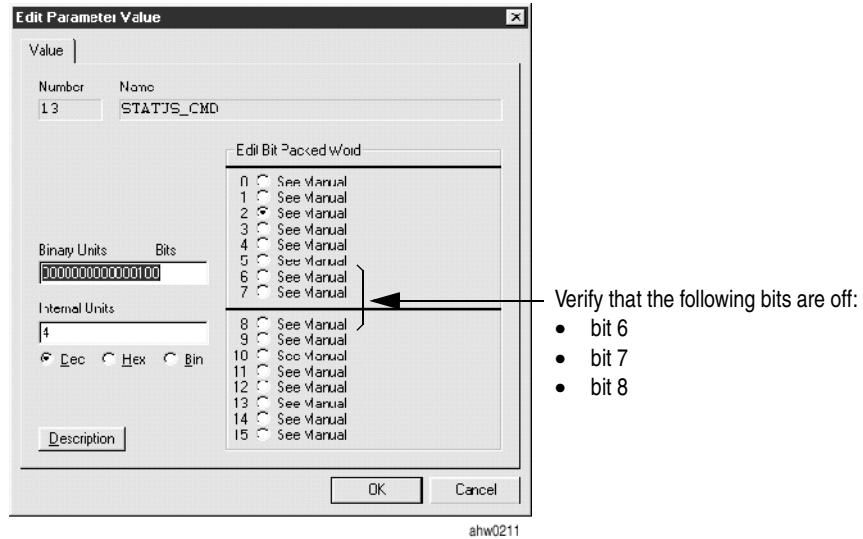
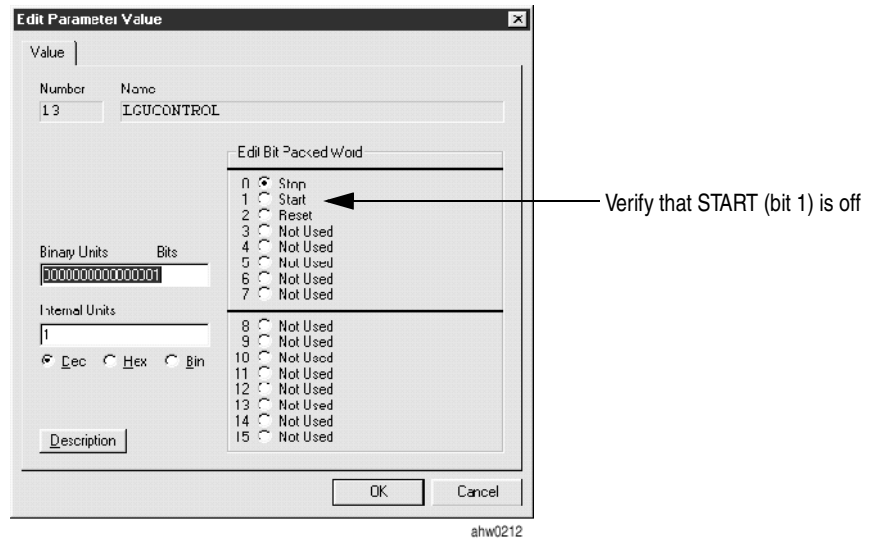


Figure 8 On-line View of LGU_CONTROL (parm 13) for 3502 LGU

10. Re-connect the Drive Enable input by re-connecting connector X3 to the TBX board.

www.rockwellautomation.com

Power, Control and Information Solutions Headquarters

Americas: Rockwell Automation, 1201 South Second Street, Milwaukee, WI 53204-2496 USA, Tel: (1) 414.382.2000, Fax: (1) 414.382.4444

Europe/Middle East/Africa: Rockwell Automation, Vorstlaan/Boulevard du Souverain 36, 1170 Brussels, Belgium, Tel: (32) 2 663 0600, Fax: (32) 2 663 0640

Asia Pacific: Rockwell Automation, Level 14, Core F, Cyberport 3, 100 Cyberport Road, Hong Kong, Tel: (852) 2887 4788, Fax: (852) 2508 1846

Publication 9303-SB001A-EN-P - May 2002

P/N 313999
Copyright © 2002 Rockwell Automation. All rights reserved. Printed in USA.