



Enpac 2500 Version 1.03

What's In These Release Notes

These release notes correspond to the Enpac 2500 operating system update, version 1.03. Use this version of the operating system with the following:

Product	Compatible Version
Emonitor software	3.2 SR060222 or later

The release notes provide the following information.

For information about	See page
Version 1.03 Enhancements	1
Corrected Anomalies	4
Operating System Upgrade Procedures	5

Version 1.03 Enhancements

This section describes the new features in the Enpac 2500 version 1.03 operating system.

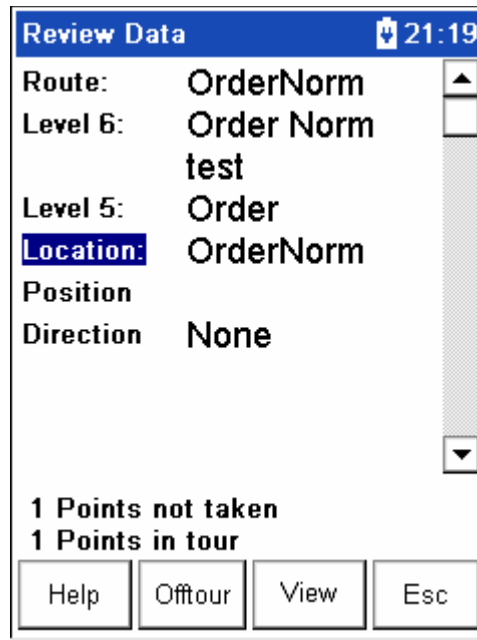
Route Navigation

A Navigation parameter has been added to the Setup screen that allows you to choose how you move through routes in the Data Collection and Review Data screens. You have the following choices:

- **Enpac** - The unit displays a Selection screen when the RIGHT ARROW key is pressed in the Data Collection or Review Data screen. The Selection screen allows you to select the item that you want to collect or review.
- **DataPac** - The unit functions like a dataPAC 1500 in that it automatically advances to the next point (train, machine, point) in the route when the RIGHT ARROW key is pressed in the Data Collection or Review Data screen.

Improved Data Review Screen

Two new functions have been added to the Data Review screen: Offtour and View (see screen below). These function make it easier for you to review previously collected route and off route data.



The screenshot shows a 'Review Data' window with a blue title bar containing a signal strength icon and the time '21:19'. The main area displays the following data:

Route:	OrderNorm
Level 6:	Order Norm
	test
Level 5:	Order
Location:	OrderNorm
Position	
Direction	None

Below the data, it shows '1 Points not taken' and '1 Points in tour'. At the bottom, there are four buttons: 'Help', 'Offtour', 'View', and 'Esc'.

The **Offtour** function displays a list of off route measurements collected for the route. See New Off Tour Review Screen on page 3 for more information. The Offtour function is present only if an off route measurement is collected.

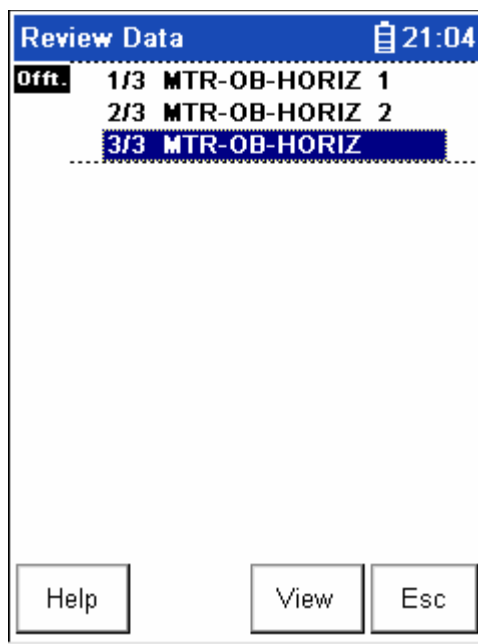
The **View** function displays the overall, FFT spectrum for the selected measurement. It is present only if data is available for the selected measurement.

IMPORTANT

If the point has more than one measurement, you must press READ/OK to view the additional measurements. The Next and Previous functions are no longer available on the Review Data screen.

New Off Tour Review Screen

The Off Tour Review screen displays a list of previously collected off route measurements. To access the Off Tour Review screen, select **Offtour** from the Review screen (see page 2).



Highlight the off route measurement you want to review and select **View**. The Enpac 2500 displays the Overall or FFT spectrum if it is available.

IMPORTANT

If the point has more than one measurement, you must press READ/OK to view the additional measurements. The Next and Previous functions are no longer available on the Review Data screen.

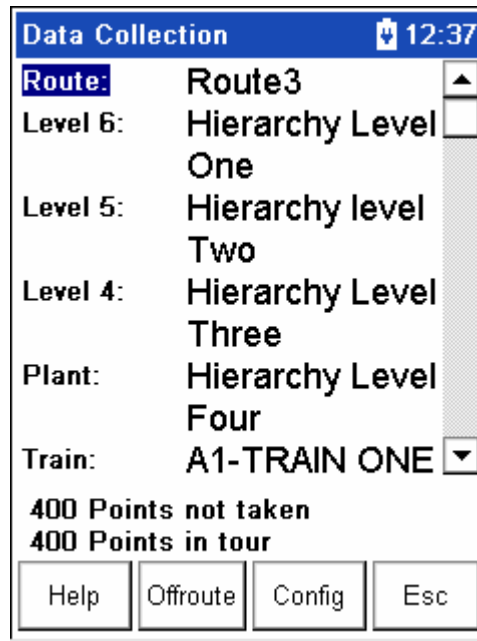
Support of Longer Character Names

The Enpac 2500 supports up to 32-character names per hierarchy level. The Emonitor software supports the following character lengths:

- Route - up to 16 characters
- Location - up to 16 characters
- Hierarchy - up to 32 characters

Support of Six Hierarchy Levels

The Enpac 2500 supports up to six hierarchy levels for each point. The hierarchy levels are defined by the structure of the database in the Emonitor software. Refer to the Emonitor online help for assistance in setting up the hierarchy levels.



Corrected Anomalies

Table 1 describes the anomalies corrected by this version of the Enpac 2500 operating system.

Table 1

Anomaly	Description
Spectra data might appear with "chopped" or "blocked" peak amplitudes.	The Enpac 2500 might choose an incorrect full-scale range when scaling the data for storage in the database.
The Enpac 2500 might not power off.	If the battery level was extremely low, the Enpac 2500 would not power off.
The overall reading might remain constant when collecting multiple readings on the same point.	The full scale does not adjust fast enough at the low frequencies range on slow moving machines with low amplitude levels (< .006 ips).
A spike might occur when collecting AC/DC measurements.	For AC/DC panel measurements, the Enpac 2500 would apply a load to the panel if the DC bias is < -2 volts.
Settling time might take too long when Trig Level is set to Auto.	The Enpac 2500 takes too long to settle when Trig Level is set to Auto and IEPE power is first applied to the instrument.
Possible Tuple error during power up/off.	Turning the Enpac 2500 off and on while viewing a route on the PCMCIA card would cause a tuple error.

Operating System Upgrade Procedures

Below are the procedures to upgrade your Emonitor software and the Enpac 2500 firmware.

Upgrading Emonitor Software to Service Release SR060222

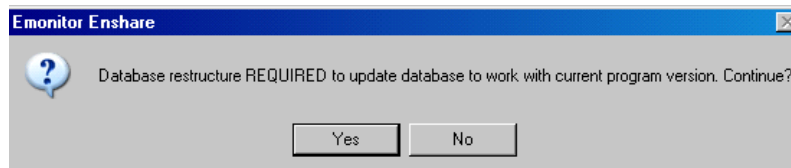
The Enpac 2500 version 1.03 operating system requires Service Release SR060222. The Service Release file is located on the Enpac 2500 CD in the \\Service Release\\SR060222 directory.

Service Release SR060222 is only for Emonitor version 3.2. Emonitor must be upgraded to version 3.2 before you can install this Service Release. You must install this Service Release on every PC that has Emonitor installed.

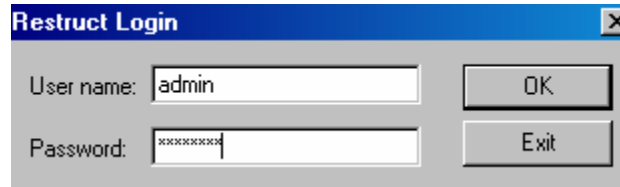
Updating Emonitor also requires updating the database structure. The restructure program automatically starts when you start Emonitor for the first time after the upgrade. The restructure program will have to be performed on all installed databases.

To install the Service Release and restructure the database, follow these steps.

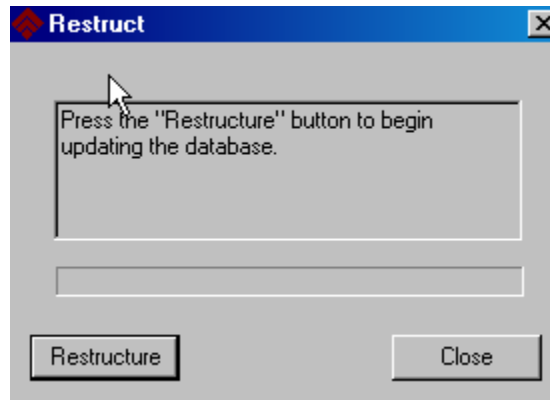
1. Back up your database before updating your Emonitor software and make sure no users are connected to the database.
2. Insert the Enpac 2500 v.1.03 CD-ROM into the CD-ROM drive of the computer.
3. Double click on the SR060222.exe file located in the \\Service Release\\SR060222 directory. It should automatically extract and install the needed files.
4. When the installation is complete, click **Finish**.
5. Start your Emonitor software from the **Start** menu. Click **Yes** to update your database. The restructure program automatically starts.



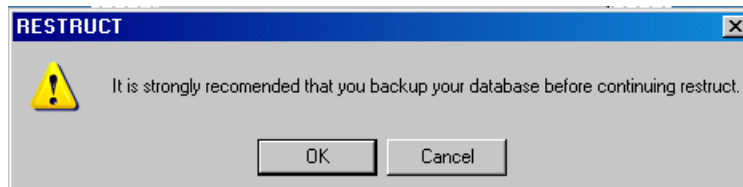
6. Enter in your Emonitor User name and Password and click **OK**. Make sure you have administration rights. The default user name is admin. The default password is password.



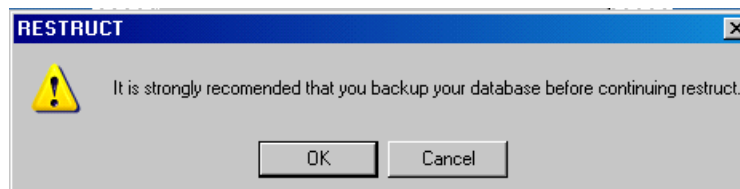
7. Click **Restructure** to begin the update process.



8. Make sure you have backed up your database, then click **OK** to continue.



9. Make sure that no users are still attached to the database, then click **OK** to continue.



10. When the process is finished, click **Close**. You can now run the new version of Emonitor.

TIP

The amount of time needed for this process depends on your processor speed and the amount of RAM available.

Upgrading Enpac 2500 Operating System

The Version 1.03 firmware file and the WinSerDL download utility are located on the Enpac 2500 CD in the OpSys directory.

To load the Version 1.03 operating system, follow these steps.

1. Press the ON/OFF key for one second to power off the Enpac 2500.
2. Attach the charger adapter and make sure the unit is powered.
3. Using a flat head screwdriver, loosen the two 1/4 turn fasteners on the battery access panel and remove the battery access panel.
4. Press the Reset switch using a 1/16th inch diameter pin or a straightened paper clip and press the LEFT and RIGHT ARROW keys.

The data collector will display the Engineer Mode Menu screen.

5. Replace the battery access panel and tighten the two 1/4 turn fasteners.
6. Connect the Enpac 2500 to the computer with an RS-232 serial cable.
7. Insert the Enpac 2500 v.1.03 CD-ROM into the CD-ROM drive of the computer.
8. On the taskbar, click the **Start** button, and then click **Run**.
9. Type `x:\OpSys\2500download.bat` (where x is the drive letter for your CD-ROM drive), and click **OK**. The WinSerDL dialog appears. Make sure the correct **Com Port** is selected.
10. From the Engineer Mode Menu screen, press 2 on the data collector's numeric key pad to start the transfer.
11. In the WinSerDL dialog, click **Start Download**.

IMPORTANT

This must be done 5 to 10 seconds of pressing 2 on the unit or the Enpac 2500 may timeout.

A progress bar displays in the dialog indicating the progress of the transfer. A progress bar also displays at the bottom of the Enpac 2500 screen. This transfer may take as long as 20 minutes.

When the transfer is complete, the message "Transfer complete" displays in the WinSerDL dialog and the Engineer Mode Menu screen reappears.

12. Close the WinSerDL dialog and disconnect the Enpac 2500 from the computer.
13. From the Engineer Mode Menu screen, press 1 on the data collector's numeric key pad to boot the Enpac 2500. Allow the unit some time to update.

IMPORTANT

It will be necessary to re-enter the date and time in the Enpac 2500.

TIP

To confirm that the correct version was loaded, press F3 (About) on the Main Screen. The Firmware Version should match the operating system file just loaded.

Rockwell Automation Support

Rockwell Automation provides technical information on the web to assist you in using our products. At <http://support.rockwellautomation.com>, you can find technical manuals, a knowledge base of FAQs, technical and application notes, sample code and links to software service packs, and a MySupport feature that you can customize to make the best use of these tools.

For an additional level of technical phone support for installation, configuration and troubleshooting, we offer TechConnect Support programs. For more information, contact your local distributor or Rockwell Automation representative, or visit <http://support.rockwellautomation.com>.

Installation Assistance

If you experience a problem with a hardware module within the first 24 hours of installation, please review the information that's contained in this manual. You can also contact a special Customer Support number for initial help in getting your module up and running:

United States	1.440.646.3434 Monday – Friday, 8am – 5pm EST
Outside United States	Please contact your local Rockwell Automation representative for any technical support issues.

New Product Satisfaction Return

Rockwell tests all of our products to ensure that they are fully operational when shipped from the manufacturing facility. However, if your product is not functioning and needs to be returned:

United States	Contact your distributor. You must provide a Customer Support case number (see phone number above to obtain one) to your distributor in order to complete the return process.
Outside United States	Please contact your local Rockwell Automation representative for return procedure.

Listen. Think. Solve. Enpac and dataPAC are trademarks of Rockwell Automation, Inc. Trademarks not belonging to Rockwell Automation are property of their respective companies.

www.rockwellautomation.com

Power, Control and Information Solutions Headquarters

Americas: Rockwell Automation, 1201 South Second Street, Milwaukee, WI 53204-2496 USA, Tel: (1) 414.382.2000, Fax: (1) 414.382.4444

Europe/Middle East/Africa: Rockwell Automation, Vorstlaan/Boulevard du Souverain 36, 1170 Brussels, Belgium, Tel: (32) 2 663 0600, Fax: (32) 2 663 0640

Asia Pacific: Rockwell Automation, Level 14, Core F, Cyberport 3, 100 Cyberport Road, Hong Kong, Tel: (852) 2887 4788, Fax: (852) 2508 1846