



Pocket DriveExplorer™ v1.02

These release notes correspond to major revision 1, minor revision 2 of software for Pocket DriveExplorer™.

Introduction

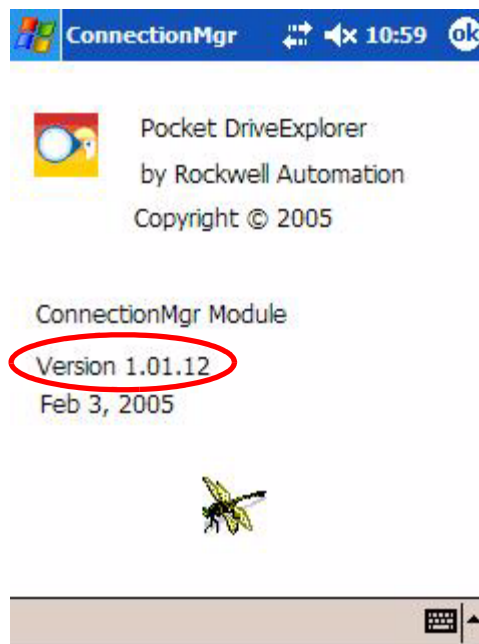
The following information is included in this document:

For information about:	See page:
Determining Software Revision Level	1
Installing the Update	2
Verify the Software Revision	2
Enhancements	2
Corrected Anomalies	2
Restrictions	2
Rockwell Automation Support	3

Determining Software Revision Level

This section describes the procedures to determine the software revision of your Pocket DriveExplorer software package

In Pocket DriveExplorer, select **Help >> About Pocket DriveExplorer** to display the About Pocket DriveExplorer window. Version 1.01 was the first release of Pocket DriveExplorer



Installing the Update

This section describes the procedure for installing the software update.

1. Run the v1.02 installation file.
2. Open Pocket DriveExplorer.
3. Verify the software revision (see section below).

Verify the Software Revision

In Pocket DriveExplorer, select **Help >> About Pocket DriveExplorer** to display the About Pocket DriveExplorer window. Version 1.02.xx should be listed (ignore the right-most digits).

Enhancements

This section describes the enhancements provided in this revision of software:

Windows® Mobile 5.0 OS Support for Pocket PC Devices

Windows® Mobile 5.0 OS support for Pocket PC devices has been added.

Corrected Anomalies

There are no anomalies corrected in this revision of software.

Restrictions

Pocket DriveExplorer does **not** support Windows Mobile 5.0 for Smart Phone Devices.

Windows Mobile 5.0 requires ActiveSync v4.1 or later to be installed on the PC and the Pocket PC to be synchronized with the PC before the software can be installed.

For Windows Mobile 2003 and Windows Mobile 2003 second edition Pocket PC devices, continue to use Pocket DriveExplorer v1.01.

Rockwell Automation Support

Rockwell Automation provides technical information on the web to assist you in using our products. At <http://support.rockwellautomation.com>, you can find technical manuals, a knowledge base of FAQs, technical and application notes, sample code and links to software service packs, and a MySupport feature that you can customize to make the best use of these tools.

For an additional level of technical phone support for installation, configuration and troubleshooting, we offer TechConnect Support programs. For more information, contact your local distributor or Rockwell Automation representative, or visit <http://support.rockwellautomation.com>.

Installation Assistance

If you experience a problem with a hardware module within the first 24 hours of installation, please review the information that's contained in this manual. You can also contact a special Customer Support number for initial help in getting your module up and running:

United States	1.440.646.3223 Monday – Friday, 8am – 5pm EST
Outside United States	Please contact your local Rockwell Automation representative for any technical support issues.

New Product Satisfaction Return

Rockwell tests all of our products to ensure that they are fully operational when shipped from the manufacturing facility. However, if your product is not functioning and needs to be returned:

United States	Contact your distributor. You must provide a Customer Support case number (see phone number above to obtain one) to your distributor in order to complete the return process.
Outside United States	Please contact your local Rockwell Automation representative for return procedure.

Notes:



U.S. Allen-Bradley Drives Technical Support - Tel: (1) 262.512.8176, Fax: (1) 262.512.2222, Email: support@drives.ra.rockwell.com, Online: www.ab.com/support/abdrives

www.rockwellautomation.com

Power, Control and Information Solutions Headquarters

Americas: Rockwell Automation, 1201 South Second Street, Milwaukee, WI 53204-2496 USA, Tel: (1) 414.382.2000, Fax: (1) 414.382.4444

Europe/Middle East/Africa: Rockwell Automation, Vorstlaan/Boulevard du Souverain 36, 1170 Brussels, Belgium, Tel: (32) 2 663 0600, Fax: (32) 2 663 0640

Asia Pacific: Rockwell Automation, Level 14, Core F, Cyberport 3, 100 Cyberport Road, Hong Kong, Tel: (852) 2887 4788, Fax: (852) 2508 1846