
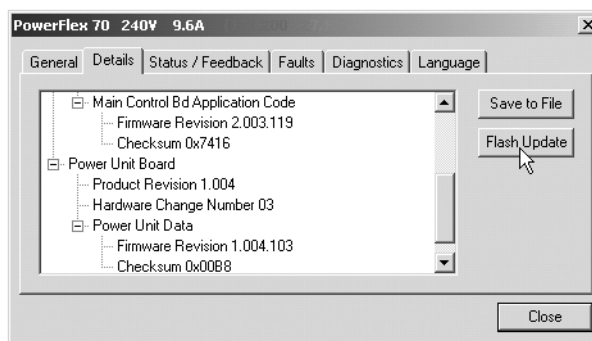




## DriveExplorer™ 4.02 - New Flash Update Feature

Version 4.02 of DriveExplorer allows customers to perform flash updates on drive products. This new flash update feature uses ControlFLASH compatible files and is supported on personal computers and on handheld personal computers.

 Access this feature on the Details tab of the Device properties window.



Communication adapters have been enhanced to support this feature. You must communicate to the device via one of the following compatible adapters:

- 1203-SSS (Revision 3.004 or higher)
- 22-SCM-232 (Revision 2.001 or higher)
- 20-COMM-E (All Revisions)

If you need to update your adapter to reach a minimum revision level, you will need to use HyperTerminal which is resident on most personal computers. It is often installed with the Windows® operating system.

For your convenience, flash updates for the following adapters with HyperTerminal flash instructions can be found in the specified folders on your CD:

Flash Update	Location on CD
1203-SSS Revision 3.004	\Flash Updates\1203-SSS\
22-SCM-232 Revision 2.001	\Flash Updates\22-SCM-232\

[www.rockwellautomation.com](http://www.rockwellautomation.com)

---

**Power, Control and Information Solutions Headquarters**

Americas: Rockwell Automation, 1201 South Second Street, Milwaukee, WI 53204-2496 USA, Tel: (1) 414.382.2000, Fax: (1) 414.382.4444

Europe/Middle East/Africa: Rockwell Automation, Vorstlaan/Boulevard du Souverain 36, 1170 Brussels, Belgium, Tel: (32) 2 663 0600, Fax: (32) 2 663 0640

Asia Pacific: Rockwell Automation, Level 14, Core F, Cyberport 3, 100 Cyberport Road, Hong Kong, Tel: (852) 2887 4788, Fax: (852) 2508 1846

Publication 9306-RN003A-EN-P - May 2003

PN DEFULL.05ENU02  
© 2003 Rockwell International Corporation. Printed in the U.S.A.