



Using DriveExplorer™ Version 3.02 with PowerFlex™ 7 Class Drives

Introduction

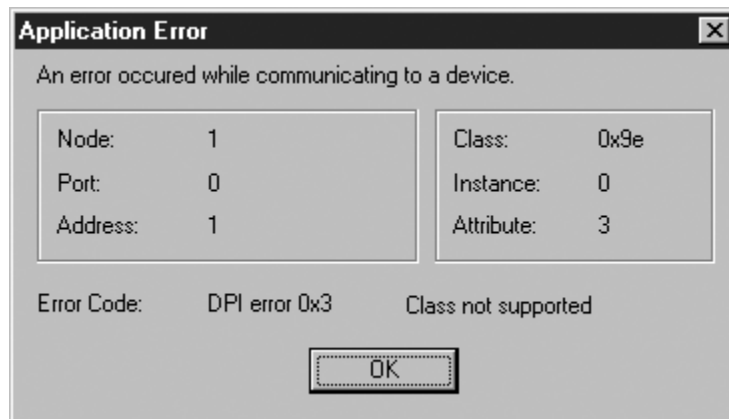
DriveExplorer version 3.02 software has been optimized for communication with PowerFlex 7 class drives (PowerFlex 70, PowerFlex 700, PowerFlex 700S). When using DriveExplorer version 3.02 with a PowerFlex 7 class drive, you must use one of the following adapter versions:

- 1203-SSS (Serial Adapter) Firmware 3.002 or later
- 20-COMM-D (DeviceNet Adapter) Firmware 1.004 or later

Important: All released firmware versions of other supported 20-COMM adapters are compatible.

Knowing if You Need to Update Firmware

If you get this error when connecting to a PowerFlex 7 class drive, you must update your adapter to a supported adapter firmware version:



Important: Note: If you tried to Connect > Local to the drive, you should update the 1203-SSS serial adapter. If you tried to Connect > Network to a remote drive on DeviceNet, you should update the 20-COMM-D DeviceNet adapter.

Getting Adapter Firmware Updates

DriveExplorer and DriveExplorer Lite version 3.02 CDs include compatible flash update files for 1203-SSS and 20-COMM-D adapters. If you do not have access to these CDs or if you would like to check if more recent updates are available, visit Drives Support at:

<http://www.ab.com/support/abdrives/index.html>

www.rockwellautomation.com

Power, Control and Information Solutions Headquarters

Americas: Rockwell Automation, 1201 South Second Street, Milwaukee, WI 53204-2496 USA, Tel: (1) 414.382.2000, Fax: (1) 414.382.4444

Europe/Middle East/Africa: Rockwell Automation, Vorstlaan/Boulevard du Souverain 36, 1170 Brussels, Belgium, Tel: (32) 2 663 0600, Fax: (32) 2 663 0640

Asia Pacific: Rockwell Automation, Level 14, Core F, Cyberport 3, 100 Cyberport Road, Hong Kong, Tel: (852) 2887 4788, Fax: (852) 2508 1846

Publication 9306-RN002A-EN-P - August 2002

P/N DEFULL.05ENU01

© 2002 Rockwell Automation. All rights reserved. Printed in the U.S.A.