



## Drive Software Wizards v2.4

This release notes describes major revision 2, minor revision 4 of drive software wizards for DriveExplorer™ (v5.02 and higher), DriveTools™ SP (v4.01 and higher) and RSLogix™ 5000 Drive Add-On Profiles (v1.00 and higher).

### Introduction

The following information is included in this document:

For information about:	See page:
<a href="#">Available Wizards for Each Release</a>	<a href="#">1</a>
<a href="#">Determining the Wizard Revision Level</a>	<a href="#">2</a>
<a href="#">Installing the New Revision</a>	<a href="#">3</a>
<a href="#">Verifying the Wizard Revision</a>	<a href="#">3</a>
<a href="#">Enhancements</a>	<a href="#">4</a>
<a href="#">Corrected Anomalies</a>	<a href="#">4</a>
<a href="#">Restrictions</a>	<a href="#">5</a>
<a href="#">Rockwell Automation Support</a>	<a href="#">6</a>

### Available Wizards for Each Release

Each new wizard release contains all of the previous released wizards, plus any new wizards:

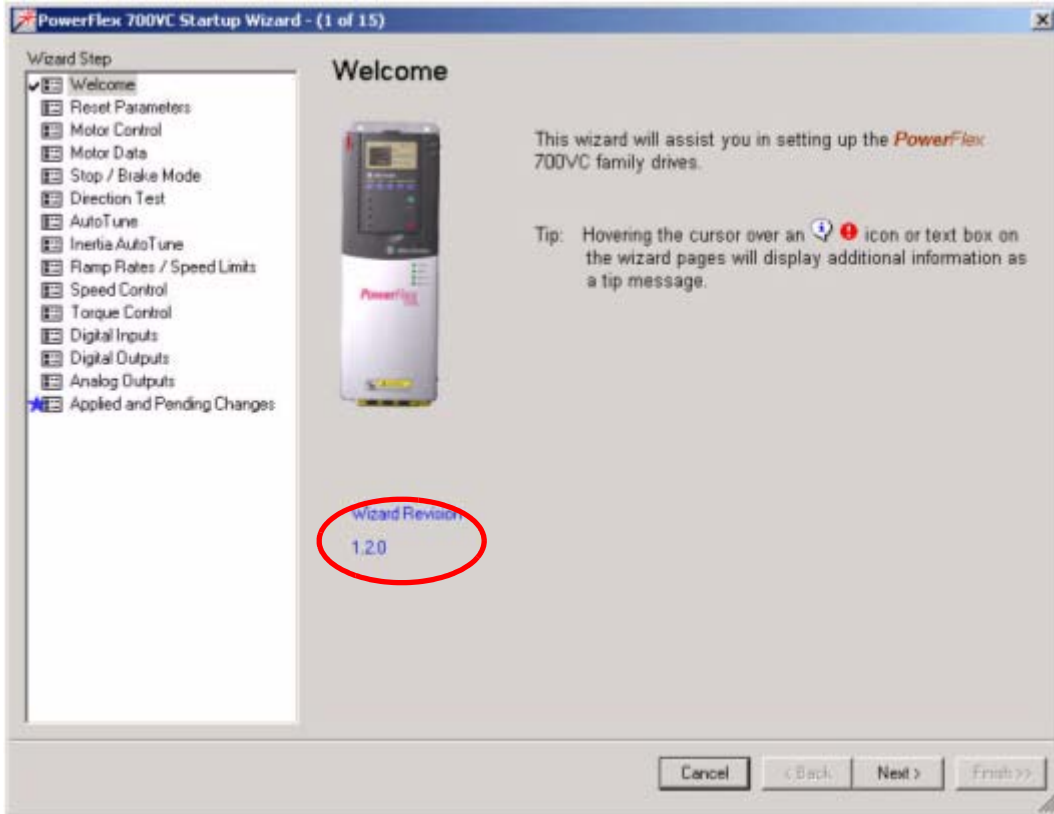
Wizard	Release					
	v1.2	v1.3	v2.1	v2.2	v2.3	v2.4
PF70 Startup	√	√	√	√	√	√
PF70EC Startup	√	√	√	√	√	√
PF700 Startup	√	√	√	√	√	√
PF700VC Startup	√	√	√	√	√	√
PF700S 2 Startup	√	√	√	√	√	√
PF40/40P Velocity StepLogic	√	√	√	√	√	√
DPI Tech Support	√	√	√	√	√	√
DSI Tech Support	√	√	√	√	√	√
SCANport Tech Support	√	√	√	√	√	√
PF700H Startup		√	√	√	√	√
PF40P Positioning StepLogic		√	√	√	√	√
PF DC Startup			√	√	√	√
PF4M Startup			√	√	√	√
PF4 Startup			√	√	√	√
PF40 Startup			√	√	√	√
PF40P Startup			√	√	√	√
PF400 Startup			√	√	√	√
PF700VC Profiling				√	√	√
PF755 Startup <sup>(1)</sup>					√	√
PF755 Safe Speed Monitor <sup>(1)</sup>					√	√
MSR57 Safety Relay Startup <sup>(1)</sup>					√	√
Data Logging					√	√
PF753 Startup <sup>(1)</sup>						√
PF755 Homing <sup>(1)</sup>						√
PF755 Profiling <sup>(1)</sup>						√

<sup>(1)</sup> Only compatible with DriveTools v5.01, DriveExplorer v6.01, and Drives AOP v2.01 or higher.

## Determining the Wizard Revision Level

This section describes the procedures to determine the revision of your drive software wizards.

Run DriveExplorer, DriveExecutive or RSLogix 5000 Drive Add-On Profiles and connect to a drive online, or run DriveExecutive or RSLogix 5000 Drive Add-On Profiles and open a saved drive configuration offline. Launch any available wizard and view the revision on the start-up window.



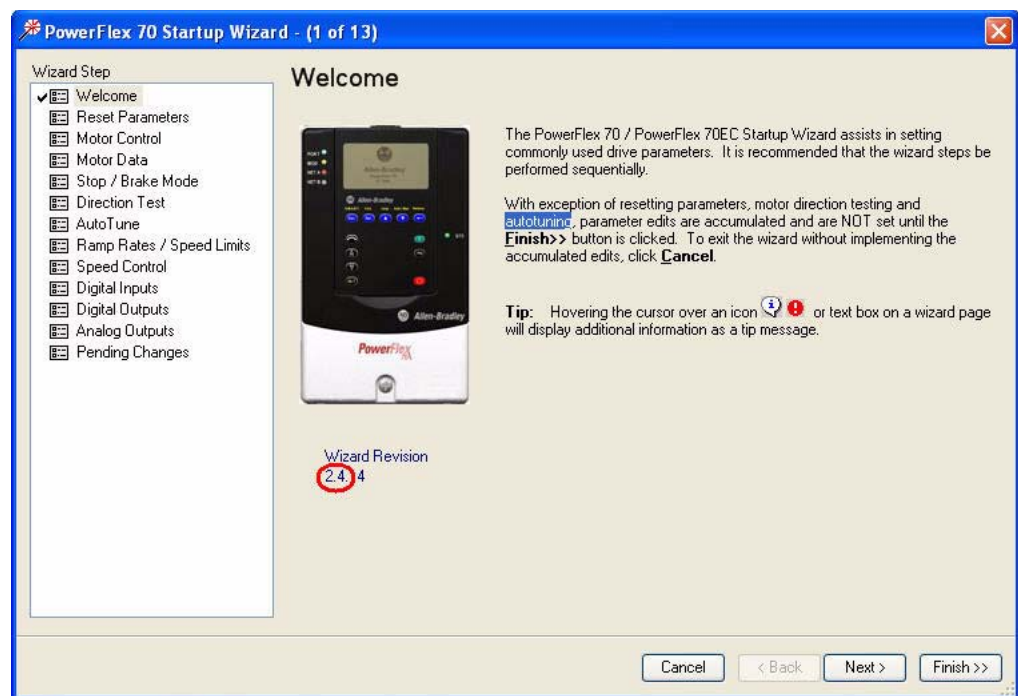
## Installing the New Revision

This section describes the procedure for installing the drive software wizards.

1. Run the v2.4 installation file.
2. Verify the wizard revision (see section below).

## Verifying the Wizard Revision

Run DriveExplorer, DriveExecutive or RSLogix 5000 Drive Add-On Profiles and connect to a drive online, or run DriveExecutive or RSLogix 5000 Drive Add-On Profiles and open a saved drive configuration offline. Launch any available wizard and view the revision on the start-up window. It should be v2.4.xx (ignore the right-most digits).



## Enhancements

This section describes the enhancements provided in this revision of software:

### **PowerFlex 753 Startup Wizard - NEW**

This wizard steps the user through a basic startup of the PowerFlex 753 drive that is similar to the Assisted Startup on the HIM.

### **PowerFlex 755 Homing Wizard - NEW**

This wizard is used to perform a homing operation for a PowerFlex 755 drive.

### **PowerFlex 755 Profiling Wizard - NEW**

This wizard is used to configure profiling for a PowerFlex 755 drive.

### **PowerFlex 40 / 40P Startup Wizard - Update for Autotune**

Added the ability to autotune PowerFlex 40 and 40P drives.

## Corrected Anomalies

This section describes corrections in this revision of drive software wizards:

### **PowerFlex 755 Startup Wizard**

Several updates / corrections were made to the existing wizard, including:

- Added Ethernet datalinks drop-down selection of parameters
- Added parameter [Enc x FB Lss Cfg] to the Encoder I/O module page
- Added parameter 71 [Autotune Torque] for tuning
- Updates have been made to the inertia autotune
- The velocity is now displayed during the Direction test when feedback is selected

### **PowerFlex 700VC Startup Wizard**

Several updates / corrections were made to the existing wizard, including:

- Corrections to the Direction test page
- Corrected a launch error when Parameter 46 [Mtr NP Pwr Units] is other than “0”
- Now updates the analog input on the Speed Control page

### **PowerFlex 700VC Profile Wizard**

- Graphs now handle “extreme” values
- Parameter 705 [Pos/Spd Prof Cmd] now handled correctly
- Corrected a problem where changes could be applied to the drive while errors in the wizard existed

## **Restrictions**

The following restrictions apply to this revision of drive software wizards:

Drive software wizards (v1.2) were introduced with the launches of DriveExplorer v5.01 and DriveTools SP v4.01. Earlier versions of these software tools do not support wizards.

Although wizards were introduced with DriveExplorer v5.01, DriveExplorer v5.02 (or higher) is required to use the v1.3 and higher wizards.

Some wizards are only compatible with DriveTools 5.01, DriveExplorer 6.01, and Drives AOP 2.01 or higher. See the footnote associated with specific wizards in [Available Wizards for Each Release on page 1](#).

## Rockwell Automation Support

Rockwell Automation provides technical information on the web to assist you in using our products. At <http://support.rockwellautomation.com>, you can find technical manuals, a knowledge base of Frequently Asked Questions (FAQs), technical and application notes, sample code and links to software service packs, and a MySupport feature that you can customize to make the best use of these tools.

Rockwell Automation also provides complimentary phone support for drives, communication adapters, and peripherals. If you experience a problem with the software, please review the information in the online Help. For further help in getting your software operational, contact a Customer Support representative:

United States	1.262.512.8176 Monday – Friday, 7am – 6pm CST
Outside United States	Please contact your local Rockwell Automation representative for any technical support issues.

For an additional level of technical phone support for installation, configuration and troubleshooting, we offer TechConnect Support programs. For more information, contact your local distributor or Rockwell Automation representative, or visit <http://support.rockwellautomation.com>

## New Product Satisfaction Return

Rockwell tests all of our products to ensure that they are fully operational when shipped from the manufacturing facility. However, if your product is not functioning and needs to be returned:

United States	Contact your distributor. You must provide a Customer Support case number (see phone number above to obtain one) to your distributor in order to complete the return process.
Outside United States	Please contact your local Rockwell Automation representative for return procedure.

U.S. Allen-Bradley Drives Technical Support - Tel: (1) 262.512.8176, Fax: (1) 262.512.2222, Email: [support@drives.ra.rockwell.com](mailto:support@drives.ra.rockwell.com), Online: [www.ab.com/support/abdrives](http://www.ab.com/support/abdrives)

[www.rockwellautomation.com](http://www.rockwellautomation.com)

Power, Control and Information Solutions Headquarters

Americas: Rockwell Automation, 1201 South Second Street, Milwaukee, WI 53204 USA, Tel: (1) 414.382.2000, Fax: (1) 414.382.4444

Europe/Middle East/Africa: Rockwell Automation, Vorstlaan/Boulevard du Souverain 36, 1170 Brussels, Belgium, Tel: (32) 2 663 0600, Fax: (32) 2 663 0640

Asia Pacific: Rockwell Automation, Level 14, Core F Cyberport 3, 100 Cyberport Road, Hong Kong, Tel: (852) 2887 4788, Fax: (852) 2508 1846