



DriveTools™ SP v5.02 Software Patch

This release note describes major revision 5, minor revision 2 of software for DriveTools SP. This patch is not a complete installation and only installs the necessary updated software components.

Introduction

The following information is included in this document:

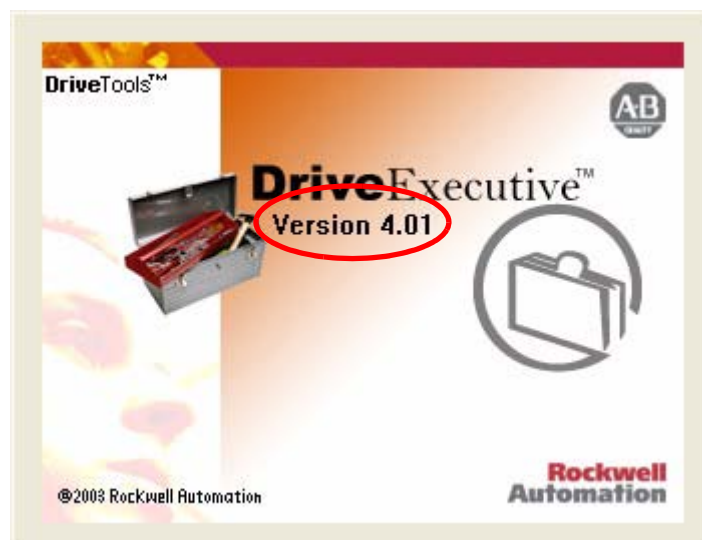
For information about:	See page:
Determining Your Software Revision	1
Installing the Software Patch	3
Verifying the Software Component Revisions	3
Enhancements	4
Corrected Anomalies	5
Restrictions	5
Rockwell Automation Support	6

Determining Your Software Revision

This section describes the procedures to determine the software revision of your DriveTools SP software package. **You must have v3.01...v5.01 already installed on your PC in order to update to v5.02.**

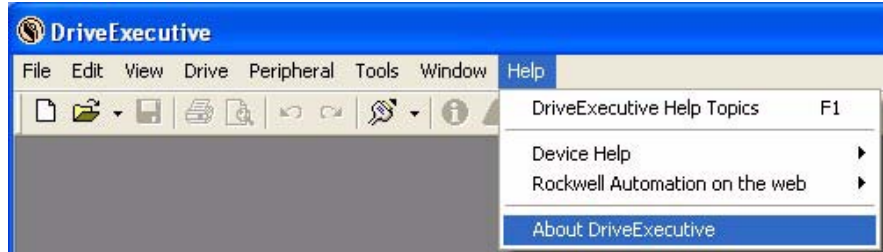
Method #1

Launch DriveExecutive and read the revision number that is displayed in the startup window. Note the startup window is only momentarily displayed when DriveExecutive launches. If you could not read the revision in time, use [Method #2 on page 2](#) to view the revision.

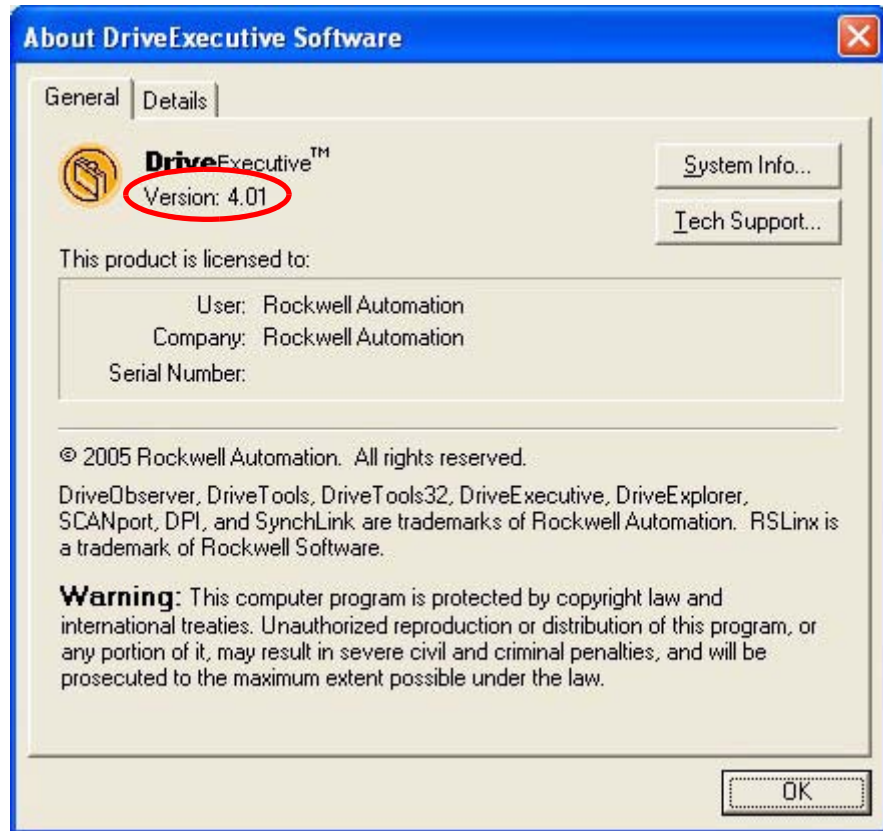


Method #2

In DriveExecutive, select **Help >> About DriveExecutive** to display the About DriveExecutive Software window.



The version number will be located under the DriveExecutive name on the General tab (see image below).



Installing the Software Patch

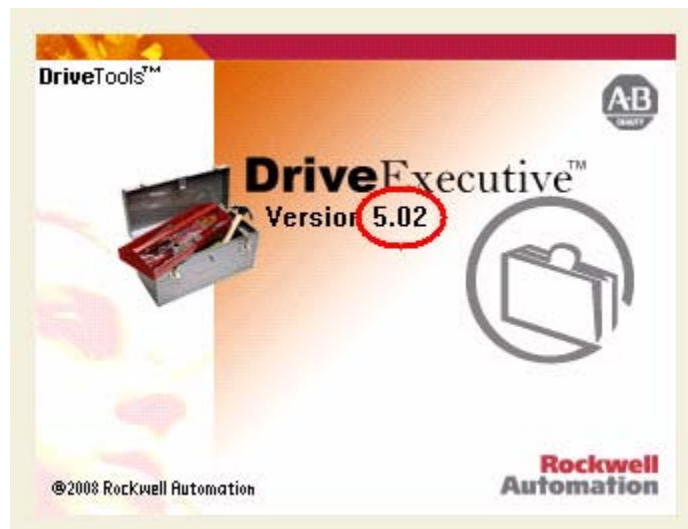
This section describes the procedure for installing the software patch. **You must have v3.01...v5.01 already installed on your PC in order to update to v5.02.**

1. Install the necessary v5.02 patch over v3.01...v5.01 on your PC.
2. Open DriveExecutive.
3. Verify the software component revisions as described below.

Verifying the Software Component Revisions

Method #1

Launch DriveExecutive and read the revision number that is displayed in the startup window. Note the startup window is only momentarily displayed when DriveExecutive launches. If you could not read the revision in time, use Method #2 to view the revision.



Method #2

In DriveExecutive, select **Help >> About DriveExecutive** to display the About DriveExecutive Software window. The version number will be located under the DriveExecutive name



Enhancements

This section describes the enhancements provided in this revision of software:

PowerFlex 753 Support

DriveTools SP v5.02 supports the new PowerFlex 753 drive, which uses the new Rev. 4 of the DeviceLogix library.

DriveTools SP v5.01 supported the launch of the PowerFlex 755 drive which contained the Rev. 3 DeviceLogix library. The PowerFlex 755 drive will be updated to the Rev. 4 DeviceLogix library for its next major release.

Wizards v2.4 Support

Includes the new PowerFlex 755 Speed Profiling and PowerFlex 753 Startup Wizards.

Wizards are available as separate downloads (<http://www.ab.com/support/abdrives/webupdate/>) but is also included in this release for customer convenience.

PowerFlex 755 Drives Help

Added Help for PowerFlex 755 drives.

PowerFlex 750-Series Drives Modules Fault and Alarm Help

Added Fault and Alarm Help for PowerFlex 750-Series drives modules.

Corrected Anomalies

This section describes the anomalies corrected in this revision for software:

Access Levels when Offline

When the parameter editor dialog was opened for indirect parameters in peripheral devices, the access level always defaulted to “basic”, which limited the number of available connection options. This has been fixed to be the correct access level setting.

Diagram Corrections

The PowerFlex 755 and PowerFlex 70EC diagrams were updated with corrections.

Restrictions

The following restriction applies to this revision of firmware:

DriveTools SP V3.01...v5.01

DriveTools SP v3.01...v5.01 must already be installed on your PC in order for the v5.02 patch to install. If v3.01...v5.01 is not already on the PC an error message will occur stating that v3.01...v5.01 was not found.

Rockwell Automation Support

Rockwell Automation provides technical information on the web to assist you in using our products. At <http://support.rockwellautomation.com>, you can find technical manuals, a knowledge base of Frequently Asked Questions (FAQs), technical and application notes, sample code and links to software service packs, and a MySupport feature that you can customize to make the best use of these tools.

Rockwell Automation also provides complimentary phone support for drives, communication adapters, and peripherals. If you experience a problem with the software, please review the information in the online Help. For further help in getting your software operational, contact a Customer Support representative:

United States	1.262.512.8176 Monday – Friday, 7am – 6pm CST
Outside United States	Please contact your local Rockwell Automation representative for any technical support issues.

For an additional level of technical phone support for installation, configuration and troubleshooting, we offer TechConnect Support programs. For more information, contact your local distributor or Rockwell Automation representative, or visit <http://support.rockwellautomation.com>

New Product Satisfaction Return

Rockwell tests all of our products to ensure that they are fully operational when shipped from the manufacturing facility. However, if your product is not functioning and needs to be returned:

United States	Contact your distributor. You must provide a Customer Support case number (see phone number above to obtain one) to your distributor in order to complete the return process.
Outside United States	Please contact your local Rockwell Automation representative for return procedure.

U.S. Allen-Bradley Drives Technical Support - Tel: (1) 262.512.8176, Fax: (1) 262.512.2222, Email: support@drives.ra.rockwell.com, Online: www.ab.com/support/abdrives

www.rockwellautomation.com

Power, Control and Information Solutions Headquarters

Americas: Rockwell Automation, 1201 South Second Street, Milwaukee, WI 53204 USA, Tel: (1) 414.382.2000, Fax: (1) 414.382.4444

Europe/Middle East/Africa: Rockwell Automation, Vorstlaan/Boulevard du Souverain 36, 1170 Brussels, Belgium, Tel: (32) 2 663 0600, Fax: (32) 2 663 0640

Asia Pacific: Rockwell Automation, Level 14, Core F Cyberport 3, 100 Cyberport Road, Hong Kong, Tel: (852) 2887 4788, Fax: (852) 2508 1846