



DriveTools SP v4.04 Software Patch

This release note describes major revision 4, minor revision 4 of software for DriveTools SP. This patch is not a complete installation and only installs the necessary updated software components.

Introduction

The following information is included in this document:

For information about:	See page:
Determining Your Software Revision	1
Installing the Software Patch	3
Enhancements	4
Corrected Anomalies	5
Restrictions	6
Rockwell Automation Support	7

Determining Your Software Revision

This section describes the procedures to determine the software revision of your DriveTools SP software package. **You must have v4.01 - v4.03 already installed on your PC in order to update to v4.04.**

Method #1

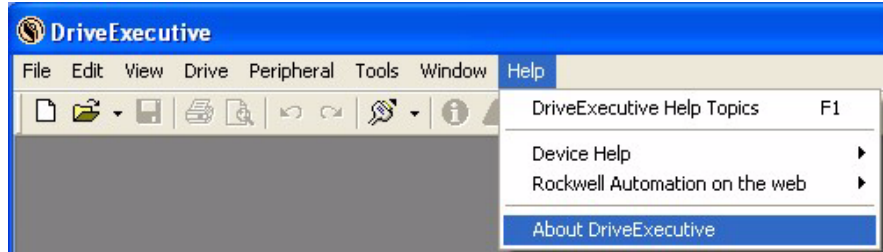
Launch DriveExecutive and read the revision number that is displayed in the startup window. Note the startup window is only momentarily displayed when DriveExecutive launches. If you could not read the revision in time, use [Method #2 on page 2](#) to view the revision.



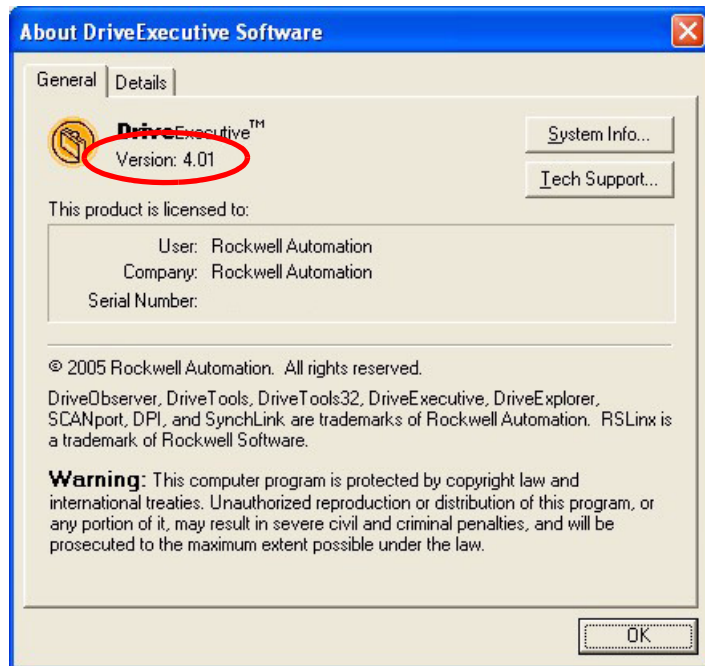
Note that v4.02 and v4.03 will still display as v4.01 in the startup window. This is because only the necessary individual software components for each patch are updated.

Method #2

In DriveExecutive, select **Help >> About DriveExecutive** to display the About DriveExecutive Software window.



The version number will be located under the DriveExecutive name on the General tab (see image below).



Note that v4.02 and v4.03 will still display as v4.01 in the General tab. This is because only the necessary individual software components for each patch are updated.

Installing the Software Patch

This section describes the procedure for installing the software patch. **You must have v4.01 - v4.03 already installed on your PC in order to update to v4.04.**

1. Install the necessary v4.04 patch over v4.01 - v4.03 on your PC.
2. Open DriveExecutive.
3. Verify the software component revisions as described below.

Verifying the Software Component Revisions

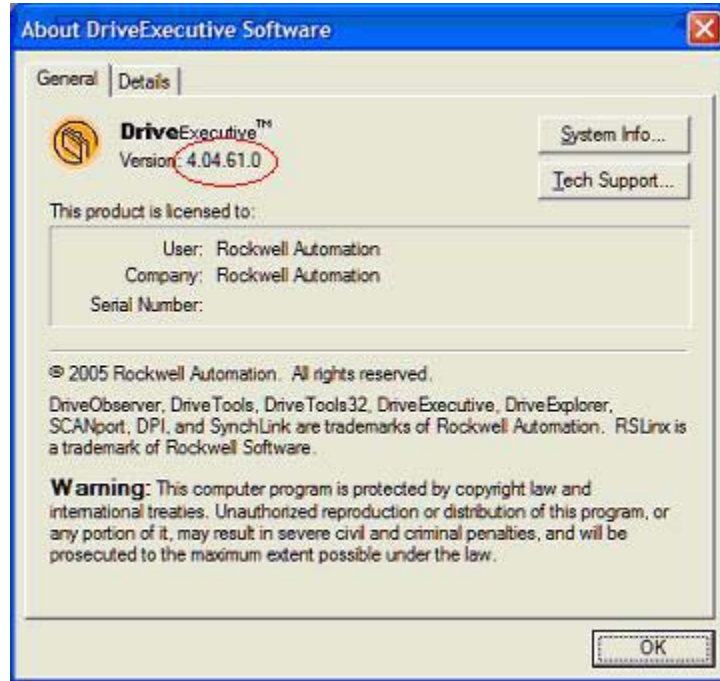
Method #1

Launch DriveExecutive and read the revision number that is displayed in the startup window. Note the startup window is only momentarily displayed when DriveExecutive launches. If you could not read the revision in time, use Method #2 to view the revision.



Method #2

In DriveExecutive, select **Help >> About DriveExecutive** to display the About DriveExecutive Software window. The version number will be located under the DriveExecutive name



Enhancements

This section describes the enhancements provided in this revision of software:


Additional Wizards

The following wizards are also included in this revision of software:

- PowerFlex 4 Startup
- PowerFlex 4M Startup
- PowerFlex 40 Startup
- PowerFlex 40P Startup
- PowerFlex 400 Startup
- DataLogger

Wizards are available as separate downloads (<http://www.ab.com/support/abdrives/webupdate/>) and are also included in this release for customer convenience.

PowerFlex 700S Phase 2 DriveLogix Control Bar Support

PowerFlex 700S Phase 2 DriveLogix firmware v4.002 (and higher) now supports control from the DriveExecutive Control Bar .

DriveExecutive was updated to accommodate this new functionality.

DriveExecutive Lite Compare Function Support

The comparison function (Tools > Compare) was previously only available in the full version of DriveExecutive. The Compare function is now also available in DriveExecutive Lite.

Corrected Anomalies

This section describes the anomalies corrected in this revision for software:

DriveExecutive v4.03 Drive Conversion Failure

A software correction in v4.03 caused the drive conversion function (Tools > Change Drive) to not perform the conversion for any database files created using v4.03.

DriveExecutive now performs the drive conversion function.

DriveLogix CSV Export Error

Previously, when online with DriveLogix, opening the “Drive Properties” window, selecting the “Component Details” tab and clicking the “Export to CSV” button would result in an error. However, a second export attempt was successful.

DriveExecutive now will successfully Export to CSV on the first attempt.

ActiveX Control from a Web Site Blocked

An ActiveX Control DLL, used by DriveTools SP, may be blocked by certain computer systems when Internet Explorer attempts to install it from the DriveTools web update site:

<http://www.ab.com/support/abdrives/webupdate/index.html>

The web update site is accessed by selecting Help > Rockwell Automation on the web > DriveTools web update.

The ActiveX Control DLL is now installed and registered in the Components folder as part of the normal installation process, eliminating the need for Internet Explorer to perform the installation.

DriveLogix Motion Comm Format Incorrectly Sets Parameter 110 [Speed/Torque Mode]

The DriveLogix Motion Comm Format would automatically set parameter 110 [Speed/Torque Mode] to "Zero Torque" instead of using "Speed Reg" (the default setting).

The DriveLogix Motion Comm Format dialog now correctly sets parameter 110 [Speed/Torque Mode] to "Speed Reg" (the default setting).

Regenerative DC Bus Supply Unit (RGU) Firmware has Incorrect Parameter Attribute Settings

The RGU had some manufacturing set-up parameter attributes that were incorrectly set as "writable" instead of "read only". DriveExecutive would receive failures when trying to write to these parameters during an offline file download to the RGU.

DriveExecutive will now accept the RGU write "failures" and will provide a choice to either continue the download or stop the process. You can then compare (Tools > Compare) the online drive to the offline file to verify whether the download was successful.

Restrictions

The following restriction applies to this revision of firmware:

DriveTools SP V4.01 - v4.03

DriveTools SP v4.01 - v4.03 must already be installed on your PC in order for the v4.04 patch to install. If v4.01 - v4.03 is not already on the PC, the following error message will occur:



Rockwell Automation Support

Rockwell Automation provides technical information on the web to assist you in using our products. At <http://support.rockwellautomation.com>, you can find technical manuals, a knowledge base of Frequently Asked Questions (FAQs), technical and application notes, sample code and links to software service packs, and a MySupport feature that you can customize to make the best use of these tools.

Rockwell Automation also provides complimentary phone support for drives, communication adapters, and peripherals. If you experience a problem with the software, please review the information in the online Help. For further help in getting your software operational, contact a Customer Support representative:

United States	1.262.512.8176 Monday – Friday, 7am – 6pm CST
Outside United States	Please contact your local Rockwell Automation representative for any technical support issues.

For an additional level of technical phone support for installation, configuration and troubleshooting, we offer TechConnect Support programs. For more information, contact your local distributor or Rockwell Automation representative, or visit <http://support.rockwellautomation.com>

New Product Satisfaction Return

Rockwell tests all of our products to ensure that they are fully operational when shipped from the manufacturing facility. However, if your product is not functioning and needs to be returned:

United States	Contact your distributor. You must provide a Customer Support case number (see phone number above to obtain one) to your distributor in order to complete the return process.
Outside United States	Please contact your local Rockwell Automation representative for return procedure.

Notes:

U.S. Allen-Bradley Drives Technical Support - Tel: (1) 262.512.8176, Fax: (1) 262.512.2222, Email: support@drives.ra.rockwell.com, Online: www.ab.com/support/abdrives

www.rockwellautomation.com

Power, Control and Information Solutions Headquarters

Americas: Rockwell Automation, 1201 South Second Street, Milwaukee, WI 53204 USA, Tel: (1) 414.382.2000, Fax: (1) 414.382.4444

Europe/Middle East/Africa: Rockwell Automation, Vorstlaan/Boulevard du Souverain 36, 1170 Brussels, Belgium, Tel: (32) 2 663 0600, Fax: (32) 2 663 0640

Asia Pacific: Rockwell Automation, Level 14, Core F, Cyberport 3, 100 Cyberport Road, Hong Kong, Tel: (852) 2887 4788, Fax: (852) 2508 1846