



Drive Software Wizards v1.3

These release notes describes major revision 1, minor revision 3 of drive software wizards for DriveExplorer™ (v5.02 and higher) and DriveTools™ SP (v4.01 and higher).

Introduction

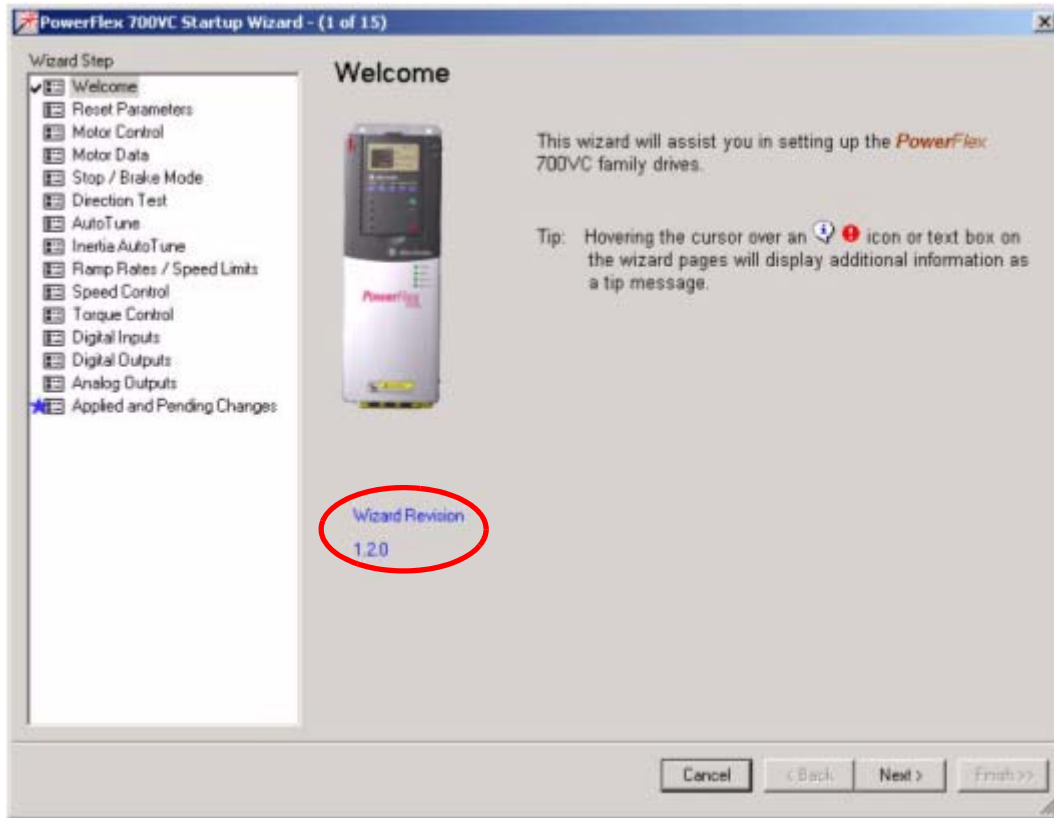
The following information is included in this document:

For information about:	See page:
Determining Wizard Revision Level	2
Installing the New Revision	2
Verifying the Wizard Revision	3
Enhancements	3
Corrected Anomalies	4
Restrictions	5
Rockwell Automation Support	6

Determining Wizard Revision Level

This section describes the procedures to determine the revision of your drive software wizards.

Run DriveExplorer or DriveExecutive and connect to a drive online, or run DriveExecutive and open a saved drive configuration offline. Launch any available wizard and view the revision on the start-up window.



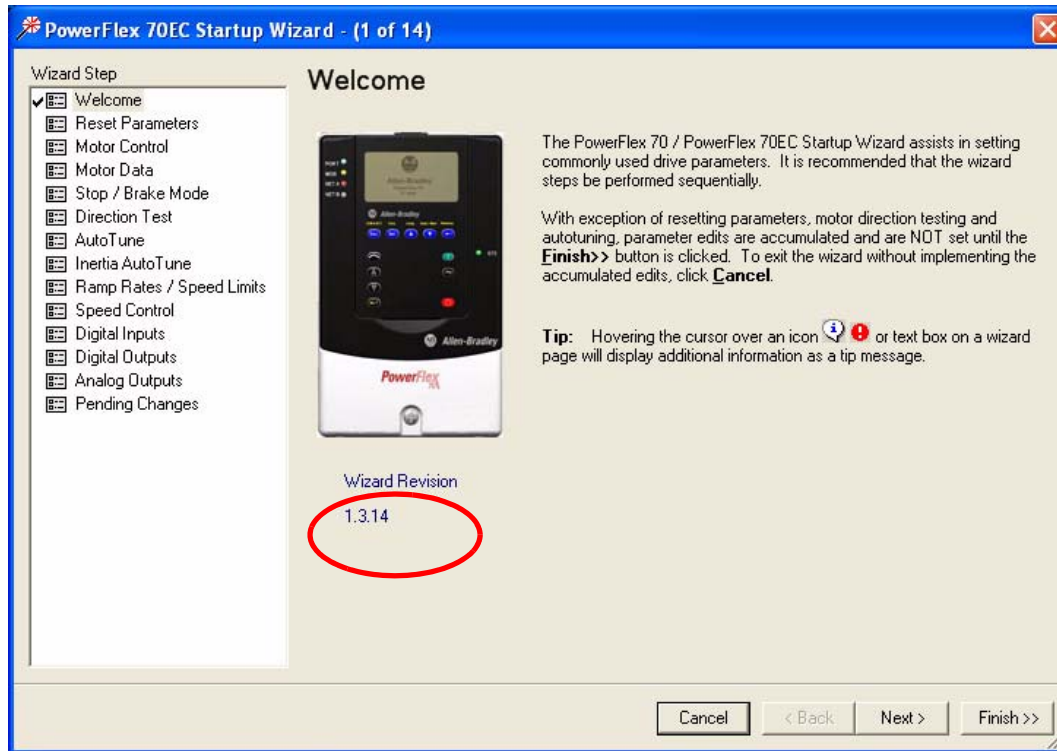
Installing the New Revision

This section describes the procedure for installing the drive software wizards.

1. Run the v1.3 installation file.
2. Verify the wizard revision (see section below).

Verifying the Wizard Revision

Run DriveExplorer or DriveExecutive and connect to a drive online, or run DriveExecutive and open a saved drive configuration offline. Launch any available wizard and view the revision on the start-up window. It should be v1.3.xx (ignore the right-most digits).



Enhancements

This section describes the enhancements provided in this revision of software:

PowerFlex 40P Position StepLogic Setup Wizard - NEW

A new positioning wizard has been added for the PowerFlex 40P. The configuration steps are similar to the Velocity wizard, with position / time being graphed instead of velocity / time. Up to eight steps can be configured.

PowerFlex 40/40P Velocity StepLogic Setup Wizard

The name has been changed from "PowerFlex 40 StepLogic Setup Wizard" to indicate that it is a "velocity" wizard and to differentiate it from the new "PowerFlex 40P Position StepLogic Setup Wizard". Several enhancements have been made, including: highlighting the current step on the graph, allowing time and velocity values to be dragged on the graph (instead of only allowing them to be typed in), and adding logic information below the graph.

PowerFlex 700H Start-Up Wizard - NEW

A basic start-up wizard similar to the PowerFlex 700 start-up wizard has been added for the PowerFlex 700H.

Start-Up Wizard Direction Test - Speed Reference

Support was added to allow the various Startup Wizards' Direction Test page to check to see if the speed reference is set to the correct DPI port number in order to allow the Wizard to perform control. The user is then allowed to change it.

Technical Support Wizards - Additional Logged Data

The DPI / DSI and SCANport Technical Support wizards now log PC operating system and software tool component information. They also provide the email addresses needed to send the saved text file to Rockwell Automation Technical Support. All logged information is copied to a text file so you can see what information you are providing before the email is sent.

PowerFlex 700S Phase 2 Start-Up Wizard

Several enhancements have been made to the PowerFlex 700S Phase 2 Start-Up wizard, including: setup pages for feedback option cards, selection of Feedback Option Port 0 for feedback, and Slip Test (function only available in v3.01 or later).

Corrected Anomalies

This section describes corrections in this revision of drive software wizards:

PowerFlex 700S Phase 2 Start-Up Wizard

- Removed off-line use (must be on-line to use the wizard). A component in the drive needs to be flashed depending on the motor control or feedback option used. The wizard performs the flash and then uses the appropriate screens for the selected control/feedback
- S-curve enabled when S-curve is programmed
- Fixed Permanent Magnet Motor Autotune
- Aborting of Autotune will clear the test command bit
- Direction test checks for feedback direction
- Regen Power Limit units set properly
- Other minor corrections

PowerFlex 70/70EC and PowerFlex 700/700VC Start-Up Wizards

- Speed Ref and Encoder PPR update correctly when the wizard is opened
- Inertia AutoTune page and Torque Control page are displayed only if in FVC vector mode (otherwise greyed out)
- Corrected Inertia Autotune anomaly that showed complete without running the test
- Start button on Direction Test page reacts faster to a mouse click
- Other minor corrections

Restrictions

The following restrictions apply to this revision of drive software wizards:

DriveExplorer v5.02 or higher, and DriveExecutive v4.01 or higher

Drive software wizards were introduced with the launches of DriveExplorer v5.01 and DriveTools SP v4.01. Earlier versions of these software tools do not support wizards.

Although wizards were introduced with DriveExplorer v5.01, DriveExplorer v5.02 (or higher) is required to use the v1.3 wizards. DriveExplorer v5.01 users can upgrade to v5.02 by downloading the free upgrade patch at <http://www.ab.com/support/abdrives/webupdate/>. Click on the **DriveExplorer** link under the **Software Files / Updates** section. This upgrade patch is only for v5.01 users and requires that v5.01 already be present on the users PC. DriveExplorer v4.xx and earlier users that are "in support" can upgrade via the Rockwell Automation My Support site at <http://support.rockwellautomation.com/>.

If you attempt to install the v5.02 upgrade patch without having v5.01 already on your PC, the following message will appear and the installer program will exit.



Rockwell Automation Support

Rockwell Automation provides technical information on the web to assist you in using our products. At <http://support.rockwellautomation.com>, you can find technical manuals, a knowledge base of FAQs, technical and application notes, sample code and links to software service packs, and a MySupport feature that you can customize to make the best use of these tools.

For an additional level of technical phone support for installation, configuration and troubleshooting, we offer TechConnect Support programs. For more information, contact your local distributor or Rockwell Automation representative, or visit <http://support.rockwellautomation.com>.

Installation Assistance

If you experience a problem with a hardware module within the first 24 hours of installation, please review the information that's contained in this manual. You can also contact a special Customer Support number for initial help in getting your module up and running:

United States	1.440.646.3223 Monday – Friday, 8am – 5pm EST
Outside United States	Please contact your local Rockwell Automation representative for any technical support issues.

New Product Satisfaction Return

Rockwell tests all of our products to ensure that they are fully operational when shipped from the manufacturing facility. However, if your product is not functioning and needs to be returned:

United States	Contact your distributor. You must provide a Customer Support case number (see phone number above to obtain one) to your distributor in order to complete the return process.
Outside United States	Please contact your local Rockwell Automation representative for return procedure.

U.S. Allen-Bradley Drives Technical Support - Tel: (1) 262.512.8176, Fax: (1) 262.512.2222, Email: support@drives.ra.rockwell.com, Online: www.ab.com/support/abdrives

www.rockwellautomation.com

Power, Control and Information Solutions Headquarters

Americas: Rockwell Automation, 1201 South Second Street, Milwaukee, WI 53204-2496 USA, Tel: (1) 414.382.2000, Fax: (1) 414.382.4444

Europe/Middle East/Africa: Rockwell Automation, Vorstlaan/Boulevard du Souverain 36, 1170 Brussels, Belgium, Tel: (32) 2 663 0600, Fax: (32) 2 663 0640

Asia Pacific: Rockwell Automation, Level 14, Core F, Cyberport 3, 100 Cyberport Road, Hong Kong, Tel: (852) 2887 4788, Fax: (852) 2508 1846