



DriveTools32™ Version 2.50 Software Updates

Obtaining Software Updates For the latest updates and patches to DriveTools32 Version 2.50 software:

1. Go to <http://support.rockwellautomation.com/>
2. Click on **Software Updates...**
3. Follow the instructions on the web page to select the DriveTools32 product that you own, to enter your name and software serial number, and to see the download file options.

Important: Software patches have been added as additional version 2.50 file sets.

COMM_DB.DLL Ver. 2.50.1.1 Patch

This patch corrects a potential issue that applies to users who connect to drives on ControlNet networks that are connected to ControlLogix gateways. When DriveTools32 V2.50 is configured for ControlNet Direct communications (i.e. the PC and drive are on the same local network), the user may click the RSWho button on the Connect to Drive dialog. When the RSWho dialog opens, the network corresponding to ControlNet Direct communications is displayed.

If the user then navigates across ControlLogix gateways from the local ControlNet network and selects a drive on a remote network, DriveTools32 software reads the node address of the drive on the remote network. **If the drive on the remote network has the same node address as a drive on the local network, DriveTools32 software will connect to the drive on the local network.** If the node address does not exist on the local network, DriveTools32 software will fail connection.

You **MUST** install this patch if you are using DriveManager32 with ControlLogix controllers.

DriveManager32 Ver. 2.50.01 Patch

This patch corrects a potential issue that applies to users who download files to Bulletin 1352AC Scalar drives, Bulletin 1352 AC Vector drives, Bulletin 3400 DC drives, and Bulletin 3502 LGUs.



ATTENTION: Risk of injury or equipment damage exists. Unintended motion may be caused by DriveTools32™ downloads to the Bulletin 3500-TBX interface, over-writing the Status Command parameter. This risk exists for the equipment listed in [Table A on page 2](#). Download, install and verify this software update to avoid the risk.

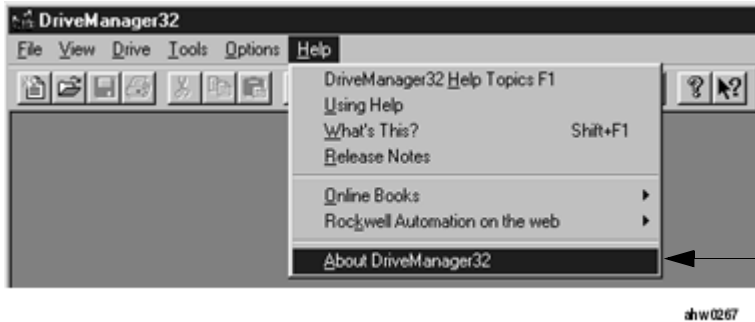
You MUST install this patch if you are using DriveManager32 with one of products in [Table A on page 2](#).

Table A Affected Products

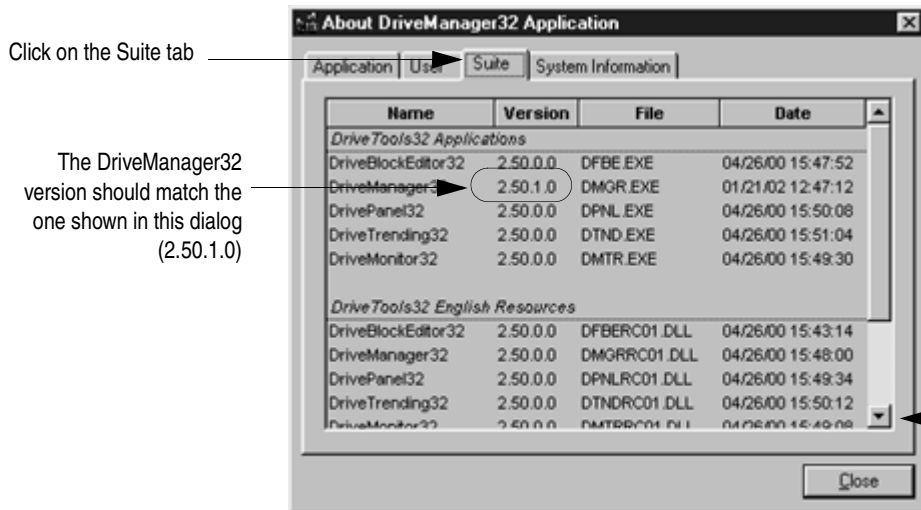
Product Family	Products	Description
Bulletin 1352	Bulletin 1352	AC Scalar Drives
Bulletin 1352	Bulletin 1352	AC Vector Drives
Bulletin 3400	Bulletin 3450	DC Drives
	Bulletin 3460	DC Drives
Bulletin 3500	Bulletin 1352	AC Scalar System Drives
	Bulletin 1352	AC Vector System Drives
Bulletin 3502	Bulletin 3502	LGU

Verifying Software Updates

After installing the patch, verify that the PC has been updated. Follow these instructions to view the DriveManager32 version and the Communication Object version.

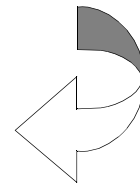


Select "About DriveManager32" from the Help menu

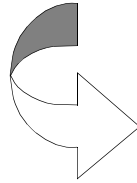


Click on the Suite tab

The DriveManager32 version should match the one shown in this dialog (2.50.1.0)



Scroll down to DriveTools32 Support Files



The Communication Object version should match the one shown in this dialog (2.50.1.0)

Name	Version	File	Date
DriveMonitor32	2.50.0.0	DMTR.EXE	04/26/00 15:49:30
<i>DriveTools32 English Resources</i>			
DriveBlockEditor32	2.50.0.0	DFBERC01.DLL	04/26/00 15:43:14
DriveManager32	2.50.0.0	DMGRRC01.DLL	04/26/00 15:48:00
DrivePanel32	2.50.0.0	DPNLRC01.DLL	04/26/00 15:49:34
DriveTrending32	2.50.0.0	DTNDRC01.DLL	04/26/00 15:50:12
DriveMonitor32	2.50.0.0	DMTRRC01.DLL	04/26/00 15:49:08
<i>DriveTools32 Support Files</i>			
Communication Object	2.50.1.1	DB_COMM.DLL	09/20/01 12:27:28
RSLinx	2.30.48.0	DTL32.DLL	06/27/01 14:12:50

Click Close

shw0269

www.rockwellautomation.com

Power, Control and Information Solutions Headquarters

Americas: Rockwell Automation, 1201 South Second Street, Milwaukee, WI 53204-2496 USA, Tel: (1) 414.382.2000, Fax: (1) 414.382.4444

Europe/Middle East/Africa: Rockwell Automation, Vorstlaan/Boulevard du Souverain 36, 1170 Brussels, Belgium, Tel: (32) 2 663 0600, Fax: (32) 2 663 0640

Asia Pacific: Rockwell Automation, Level 14, Core F, Cyberport 3, 100 Cyberport Road, Hong Kong, Tel: (852) 2887 4788, Fax: (852) 2508 1846