

SoftLogix Controllers, Version 20

Catalog Numbers 1789-L10, 1789-L30, 1789-L60

Topic	Page
Compatible Software Versions	3
Compatible PCI-based Cards and Drivers	4
System Requirements	4
Before You Begin	6
Corrected Anomalies	8
Enhancements	6
Known Anomalies	13
Restrictions	16
Performing Typed Operations	17
Functionality Issues in Specific Circumstances	18
Install the Controller	20
Use Motion Drivers in Windows XP Systems	21
Additional Memory Requirements	22
Additional Resources	31

IMPORTANT

Consider the following before upgrading your SoftLogix™ 5800 controller:

- Before updating your controller, we strongly recommend that you review information pertinent to previous major versions. For example, when updating from version 18.x . . . 20.x, view information for versions 18.15 and 19.11 in these publications:
 - SoftLogix 5800 Controllers, Version 18 Release Notes, publication [1789-RN018](#)
 - SoftLogix 5800 Controllers, Version 19 Release Notes, publication [1789-RN019](#)

Release notes contain material for all minor versions subsequent to each major version. If your controller, for example, is at version 18.11, and not the latest version, such as 20.x, you should view all of the information for version 18.11 . . . 19.11 before updating to version 20.x.

Release notes are available at <http://www.rockwellautomation.com/literature>.
- After upgrading your controller, we strongly recommend that you **retest and/or validate your application offline before going online.**

About This Publication

This publication describes SoftLogix 5800 controllers, version 20.04.00.

We strongly recommend that you review the information provided regarding previous software versions. We recommend that you do so because, if you are upgrading your software through multiple previous versions, all of the information specific to all of the versions is applicable.

For example, if you need to upgrade your 1789-L60 controller from version 19.00.00...20.03.00, all of the information specific to versions 19.00.00...20.04.00 is applicable.

About Publication 1789-RN519D-EN-P

This revision of the SoftLogix Controllers Release Notes, publication 1789-RN519D, provides updated information specific to version 20.04.00.

Table 1 - Controller Versions Identified in Publication 1789-RN519D

Cat. No.	Version
1789-L10	20.04.00
1789-L30	
1789-L60	

About Publication 1789-RN519C-EN-P

This revision of the SoftLogix Controllers Release Notes, publication 1789-RN519C, provides updated information specific to version 20.03.00.

Table 2 - Controller Versions Identified in Publication 1789-RN519C

Cat. No.	Version
1789-L10	20.03.00
1789-L30	
1789-L60	

About Publication 1789-RN519B-EN-P

This publication describes SoftLogix 5800 controllers, version 20.01.00.

Table 3 - Controller Versions Identified in Publication 1789-RN519B

Cat. No.	Version
1789-L10	20.01.00
1789-L30	
1789-L60	

About Publication 1789-RN519A-EN-P

This publication describes SoftLogix 5800 controllers, version 20.00.00.

Table 4 - Controller Versions Identified in Publication 1789-RN519A

Cat. No.	Version
1789-L10	20.00.00
1789-L30	
1789-L60	

Compatible Software Versions

To use version 20.04.00, these minimum software versions are required.

Table 5 - Compatible Software Versions

Software	Required Software Version, min
Compare Tool	3.20.02
ControlFLASH™	11.00.00
FactoryTalk® AssetCentre	4.00.00 (CPR 9, SR3)
FactoryTalk Services Platform	2.50.00 (CPR 9, SR5)
FactoryTalk Activation	3.50.00 (CPR 9, SR5)
RSLinX® Classic	2.59.02 (CPR 9, SR5)
RSLinX Enterprise	5.50.04 (CPR 9, SR5)
RSLogix® 5000	20.04.00 (CPR 9, SR5)
RSNetWorx™ for ControlNet	11.00.00 (CPR 9, SR5)
RSNetWorx for DeviceNet	
RSNetWorx for EtherNet/IP	

Compatible PCI-based Cards and Drivers

This table lists PCI-based cards, firmware revisions, and driver versions that you can use with the SoftLogix controllers, version 20.

Table 6 - Network, Operating System, Firmware, and Driver Compatibility

Network	Operating System				Firmware and Driver Compatibility
	Windows XP	Windows 2003 Server	Windows Vista Windows 2008 Server	Windows 7	
EtherNet/IP	Yes	Yes	Yes	Yes	NA All operating systems support Ethernet, whether via a PCI-based card or other interface.
ControlNet 1784-PCIC/B, 1784-PCICS/B	Yes	Yes	Yes ⁽¹⁾	No	Firmware revision 4.10 and driver revision 4.06 ⁽²⁾
ControlNet 1784-PCIC/A, 1784-PCICS/A	Yes	Yes	Yes ⁽¹⁾	No	Firmware revision 3.10 and driver revision 4.06 ⁽²⁾
DeviceNet 1784-PCIDS/B	Yes	Yes	No	No	Firmware revision 3.016 and driver revision 2.01
DeviceNet 1784-PCIDS/A	Yes	Yes	No	No	Firmware revision 2.008 and driver revision 2.01

(1) Supports ControlNet communication only. These operating systems do not support ControlNet scanner functionality.

(2) If you are installing a ControlNet card for the first time or if you already have a ControlNet card installed, use the instructions in the ControlNet Communication Card Installation Instructions, publication [1784-IN003](#), to install or update the driver as appropriate.

System Requirements

[Table 7](#) identifies system requirements for the SoftLogix 5800 controller.

IMPORTANT

Use the computer that is running the SoftLogix controller like an industrial controller, not a personal computer. The SoftLogix controller executes real-time operations. If you use other programs or applications on the computer when the controller is executing real-time operations, those operations may be disrupted.

IMPORTANT

SoftLogix controllers and software, version 20 and later, **do** support EtherNet/IP networks, but **do not** support Integrated Motion on EtherNet/IP networks. Allen-Bradley, PCI-based motion cards are **not** supported when using the Microsoft Windows 7 operating system.

For more information, see Knowledgebase document KB 509008.

Table 7 - System Requirements

Category	Description
Personal computer	<p>IBM-compatible Pentium 4 1.6 GHz or later⁽¹⁾</p> <p>Other requirements include the following:</p> <ul style="list-style-type: none"> • FactoryTalk Activation Manager if you are currently using Factory Activation software. • A hard disk that supports bus mastering. • The need for bus-mastering drivers for the personal computer's chip set; for Intel motherboards, this software is called Application Accelerator. • Applications that are resource-intensive, including applications that use sequential, motion, and other local applications running on the computer, may require a dual CPU to achieve performance requirements.
Operating systems 64-bit	<p>SoftLogix software is supported on 64-bit operating systems.</p> <p>Supported 64-bit operating systems include the following:</p> <ul style="list-style-type: none"> • Microsoft Windows Server 2008 R2 Standard Edition Service Pack 1 • Microsoft Windows 7 Home Premium (64-bit) Service Pack 1 • Windows 7 Professional (64-bit) Service Pack 1 <p>IMPORTANT: When SoftLogix software is installed on a 64-bit Windows operating system, the following modules will be available in the Chassis Monitor:</p> <ul style="list-style-type: none"> • SoftLogix controller • Soft ENBT • Input/output simulator module <p>IMPORTANT: Motion, ControlNet, and DeviceNet modules are no longer supported in SoftLogix software on 64-bit Windows operating systems.</p> <p>Accessing SoftLogix software via Remote Desktop on remote machines is not supported. Virtual Windows operating systems are not supported for executing SoftLogix software.</p>
32-bit	<p>SoftLogix software is supported on 32-bit operating systems (x86).</p> <p>Supported 32-bit operating systems include the following:</p> <ul style="list-style-type: none"> • Microsoft Windows XP Professional with Service Pack 3 • Microsoft Windows 7 Home Premium (32-Bit) with Service Pack 1 • Microsoft Windows Vista Business (32-Bit) with Service Pack 2 • Microsoft Windows Server 2008 Standard Edition with Service Pack 2 • Microsoft Windows Server 2003 R2 Standard Edition with Service Pack 2 <p>Accessing SoftLogix software via Remote Desktop on remote machines is not supported. Virtual Windows operating systems are not supported for executing SoftLogix software.</p>
RAM	1 GB, min
Hard disk space	64 MB of free hard disk space per controller instance (or more based on application requirements)
Network requirements	<p>Primary or extended 32-bit PCI slot (one slot per communication PCI-based card).</p> <p>Supports 1784-PCICS card for the ControlNet network (not compatible with Microsoft Windows 7 operating system).</p> <p>Supports 1784-PCIDS card for the DeviceNet network (not compatible with Microsoft Windows Vista, Microsoft Windows 2008 Server, and Microsoft Windows 7 operating systems).</p> <p>Supports EtherNet/IP and Ethernet port of the personal computer.</p> <p>Third-party networks are supported through the Rockwell Automation® Encompass™ program.</p>
Video requirements	<p>16-color VGA graphics adapter 640 x 480, or later resolution</p> <p>(256-color, 800 x 600 min, for optimal resolution)</p>

(1) The SoftLogix 5800 controller has been tested and qualified only on genuine Intel processors.

For system requirements, go to

<http://ab.rockwellautomation.com/programmable-controllers/softlogix-controllers>.

Before You Begin

Before you upgrade your controller, consider how close it is to the limits of memory. This version may require more memory than previous versions.

To see what components of your current project require more memory, see [Additional Memory Requirements on page 22](#).

IMPORTANT Rockwell Automation does not assume responsibility or liability (to include intellectual property liability) for actual use of the external routines featured in a control system application.

RSLogix 5000 software, version 13.00.00 or later, lets you estimate the memory requirements of the controller offline.

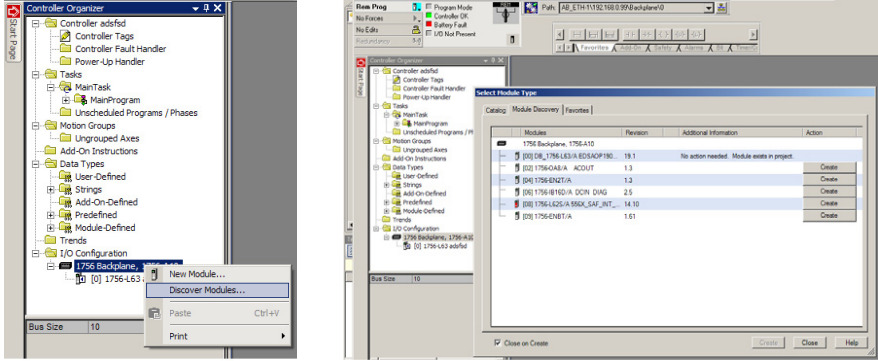
Enhancements

These enhancements are available when you use controller version 20.00.00 or later, with RSLogix 5000 software, version 20.00.00 or later.

Table 8 - Enhancements with Controller Version 20.00.00

Cat. No.	Description
1789-L10, 1789-L30, 1789-L60	<p>Security</p> <p>To enhance system and device-level security in systems that use our products, Rockwell Automation prescribes validated, defense-in-depth measures and design practices to enhance system and device-level security. For the latest information on security solutions and enhancements, visit http://www.rockwellautomation.com/solutions/security.</p>
	<p>Slot 0 in the Chassis Monitor now supports SoftLogix modules. Previously, this slot was used only for RSLinx software.</p>
	<p>When a SoftLogix controller is installed on a 64-bit Windows operating system, the following modules will now be supported in the Chassis Monitor:</p> <ul style="list-style-type: none"> • SoftLogix controller • Soft ENBT module • Input/output simulator module
	<p>Automatic Device Configuration for Drives</p> <p>This feature supports the automatic device replacement functionality for drives. This makes it easier to perform quick, efficient drive replacement without requiring any laptop, software, or user intervention aside from wiring in the new drive and setting a network address. Previously, device configuration data for PowerFlex® drives was kept in the ACD file and had to be manually managed via the AOP of the device. Now, when a module is replaced, the controller will automatically send the configuration data. Automatic Device Configuration has always been supported by Sercos and CIP motion drives. Version 20 extends ADC support to the PowerFlex 755 drives.</p>
	<p>Electronic Data Sheet AOP</p> <p>This feature allows select devices that have properly configured EDS sheets to integrate directly with Logix without the need for a device profile. This improves the flexibility of the Integrated Architecture™ on EtherNet/IP network by providing a richer integrated experience to more devices.</p>
	<p>Finding/Adding Devices to the Logix Tree</p> <p>Enhancements to the Select Module dialog box make it easier to use and find devices. The Select Module dialog box now shows properly configured and registered EDS devices on EtherNet/IP network, in addition to other module profiles. It also includes new string and category filters, a wildcard search, and a favorites list.</p>

Table 8 - Enhancements with Controller Version 20.00.00

Cat. No.	Description
1789-L10, 1789-L30, 1789-L60	<p>Module Discovery in RSLogix 5000 Software</p> <p>Module Discovery is a new online capability that can browse the backplane or network to find devices to add to the Logix I/O tree (currently not supported in CompactLogix™ controllers). This feature simplifies the user experience for adding devices to the I/O tree by not requiring you to know the exact catalog number, slot number, or network address. It presents a list of all devices found on the backplane or remote network, identifies which devices already exist in the project, and provides a Create button for the rest to easily add them to the project. The devices must also support addition online.</p> 
	<p>QuickConnect – EtherNet/IP Devices</p> <p>QuickConnect allows EtherNet/IP devices to quickly power up and connect to an EtherNet/IP network. QuickConnect requires a Logix controller with embedded QuickConnect firmware, and support in the I/O platform with embedded QuickConnect firmware (currently select ArmorBlocks).</p>
	<p>Security Authority Binding</p> <p>By checking the Require Matching Security Authority ID for Authentication and Authorization checkbox, you can bind the project file to a specific instance of the FactoryTalk Security directory. This helps you to verify the identity of the FactoryTalk Security directory that was used to authenticate and authorize users of a secured project file or secured controller. Once this is assigned, the project file or the controller containing the project file cannot be accessed by any users unless they are authenticated by this specific FactoryTalk Security directory. Make sure you properly back up your FactoryTalk directory when enabling this feature.</p> <p>For more information, see the FactoryTalk Security System Configuration Guide, publication FTSEC-QS001.</p>
	<p>Restricted Communication Slot</p> <p>By clicking the 'Restrict Communications Except Through Selected Slots,' select software products including RSLinx, RSLogix 5000, and ControlFLASH software will not be able to communicate with the controller except via communication cards loaded in the selected slots. Communication from the controller to other devices, such as, remote I/O modules, other controllers, are not impacted by this setting. This setting is useful to help you control that configuration changes to the controller can only be made through selected networks. When this setting is enabled, these software products will not be able to communicate with the controller via the USB port.</p> <p>For more information, see the ControlLogix® System User Manual, publication 1756-UM001.</p>
	<p>Change Detection</p> <p>When online with a controller, a 64-bit integer is displayed in the Audit Value dialog box. This Audit Value changes every time an event listed in the Changes To Detect configuration dialog box occurs. By inspecting this value, you can quickly determine if the behavior of a controller has been modified since the last time it was inspected. The Change Detection Audit Value is also exposed as a predefined tag by RSLinx Enterprise software for use in HMI displays or other applications. Additionally, it is included in every entry of the Controller Log.</p> <p>For more information, see the ControlLogix System User Manual, publication 1756-UM001.</p>

Corrected Anomalies

These anomalies have been corrected with these controller versions:

- [Corrected Anomalies with Controller Version 20.04.00 on page 8](#)
- [Corrected Anomalies with Controller Version 20.01.00 on page 8](#)
- [Corrected Anomalies with Controller Version 20.00.00 on page 9](#)

The following anomalies have been corrected with this controller version.

Table 9 - Corrected Anomalies with Controller Version 20.04.00

Cat. No.	Description
1789-L10, 1789-L30, 1789-L60	CORRECTED: When more than one person is online with SoftLogix 5800 software and one (a remote box over Ethernet) does an edit, the Periodic SAVE stops updating the ACD file (svslotx.acd). The persistent storage light (battery) never went on. Lgx00144837

The following anomalies have been corrected with this controller version.

Table 10 - Corrected Anomalies with Controller Version 20.01.00

Cat. No.	Description
1789-L10, 1789-L30, 1789-L60	CORRECTED: The 'Home to Torque Level - Marker' on SERCOS drives operated correctly in version 19.00.00, but does not in version 20.00.00. This functionality is now fixed. 'Home to Torque' without marker was not affected. Lgx00125135, Lgx00127942
	CORRECTED: If multiple PCMD instructions are executed against the same Equipment Phase, it can result in a memory corruption that will cause the following. 1. The Soft controller to Red X in the Chassis Monitor. To recover, you would need to remove the processor. 2. The Soft controller to shut down. Lgx00124285
	CORRECTED: When you insert a controller in the chassis or reboot the computer running the SoftLogix controller, the controller clock resets back to 12/31/1997. This behavior only happens in version 20.00.00. In previous versions of SoftLogix software, when the SoftLogix 5800 controller is placed into the Chassis Monitor, it reads the time from the personal computer's clock. This gives the SoftLogix 5800 controller a time baseline. There are internal mechanisms in the SoftLogix 5800 controller that keep track of the High Performance Counters (HPC) used for motion. We add the offset from these High Performance Counters to the baseline to give us the WALLCLOCK time in the SoftLogix 5800 controller. Lgx00129229

The following anomalies have been corrected with controller version 20.00.00.

Table 11 - Corrected Anomalies with Controller Version 20.00.00

Cat. No.	Description
1789-L10, 1789-L30, 1789-L60	<p>CORRECTED: Unsuccessful MSG execution results in subsequent unsuccessful messages in master/slave controller configurations.</p> <p>When a DF-1 serial connection is used between a master and slave controller, a MSG instruction is not successfully executed and an in-polling sequence error occurs if the master station address is not listed in the poll node list.</p> <p>However, with this anomaly, after the in-polling sequence error, subsequent MSG instructions are also unsuccessful.</p> <p>To work around this anomaly, change the master controller's station address to a different value or re-execute the unsuccessful MSG instruction in Master Transmit mode and use the Between Station Polls parameter.</p> <p style="text-align: right;">Lgx00083882, Lgx00082610</p>
	<p>CORRECTED: A small window exists where, when the .PC bit is set on a Motion Group Stop (MGS) instruction configured as Stop Mode = Fast Disable, all axes in the selected group are not disabled. However, the axes in the group are disabled after the next Coarse Update Period.</p> <p style="text-align: right;">Lgx00113546, Lgx00106782</p>
	<p>CORRECTED: When a Master Axis Position Cam (MAPC) instruction, with Execution Schedule = Pending, is executed, its master axis is ignored. However, its master axis' scaling constant is used to scale the Master Scaling parameter instead of the scaling constant on the axis that is currently active. Using the incorrect scaling constant results in incorrect overall scaling of the PCAM.</p> <p>You can take one of the following actions to work around this anomaly:</p> <ul style="list-style-type: none"> • Set the PCAM's master axis to be identical to the active master axis. • Update the Master Scaling coefficient off the pending move to achieve desired scaling factor. <p style="text-align: right;">Lgx00113538, Lgx00112356</p>

Table 11 - Corrected Anomalies with Controller Version 20.00.00

Cat. No.	Description																														
1789-L10, 1789-L30, 1789-L60	<p>CORRECTED: When using Add-On Instructions, if you use the same backing/reference tag for multiple Add-On Instructions that are in different tasks, the controller may experience a major non-recoverable (MNR) fault.</p> <p>For example, you have an Add-On Instruction called Motor_Start that is used twice in the application, once in Periodic Task 1 and once in Periodic Task 2, in both cases the Motor_Start Add-On Instruction uses the same backing/reference tag Pump_Motor_Start.</p> <p>The following events may occur when the program is executing:</p> <ol style="list-style-type: none"> 1. Periodic Task 1 is executing and the Motor_Start is being scanned. 2. Periodic Task 2 preempts Periodic Task 1. 3. Periodic Task 2 runs and the Motor_Start is executed. 4. Periodic Task 1 is allowed to again execute and completes scanning of the Motor_Start. 5. Upon completion of scanning Motor_Start the controller can MNR. <p>The MNR occurs if one instance of the Motor_Start scans false and the other scans true.</p> <p>To work around this anomaly, use individual backing/reference tag for all Add-On Instructions.</p> <p style="text-align: right;">Lgx00113790, Lgx00113448</p>																														
	<p>CORRECTED: When you perform a Partial Import Online (PIO) of a function block routine that contains S-Curve function blocks across Logix platforms, set the .Initialize bit in the backing tag control structure of all S-Curve instructions. This configuration causes the S-Curve instructions to re-initialize themselves.</p> <p>Failure to set the .Initialize bit in the backing tag control structure of all S-Curve instructions may cause the S-Curve function block to execute with uninitialized values.</p> <p style="text-align: right;">Lgx00114927, Lgx00114956</p>																														
	<p>CORRECTED: When performing indirect addressing of Boolean arrays that are inside UDTs, only Boolean arrays are affected.</p> <p>This figure is an example of a UDT that contains a Boolean array.</p> <table border="1" data-bbox="365 961 1442 1276"> <thead> <tr> <th colspan="2" data-bbox="365 961 1003 1010">Members:</th> <th colspan="3" data-bbox="1003 961 1442 1010">Data Type Size: 16 byte(s)</th> </tr> <tr> <th data-bbox="365 1010 423 1066"></th> <th data-bbox="423 1010 738 1066">Name</th> <th data-bbox="738 1010 1235 1066">Data Type</th> <th data-bbox="1235 1010 1390 1066">Style</th> <th data-bbox="1390 1010 1442 1066">Des</th> </tr> </thead> <tbody> <tr> <td data-bbox="365 1066 423 1108">■</td> <td data-bbox="423 1066 738 1108">Boolean_Array</td> <td data-bbox="738 1066 1235 1108">BOOL[64]</td> <td data-bbox="1235 1066 1390 1108">Decimal</td> <td data-bbox="1390 1066 1442 1108"></td> </tr> <tr> <td data-bbox="365 1108 423 1150"></td> <td data-bbox="423 1108 738 1150">Test_Bit</td> <td data-bbox="738 1108 1235 1150">BOOL</td> <td data-bbox="1235 1108 1390 1150">Decimal</td> <td data-bbox="1390 1108 1442 1150"></td> </tr> <tr> <td data-bbox="365 1150 423 1192"></td> <td data-bbox="423 1150 738 1192">Dint_Value</td> <td data-bbox="738 1150 1235 1192">DINT</td> <td data-bbox="1235 1150 1390 1192">Decimal</td> <td data-bbox="1390 1150 1442 1192"></td> </tr> <tr> <td data-bbox="365 1192 423 1255">10⁴ 010</td> <td data-bbox="423 1192 738 1255"></td> <td data-bbox="738 1192 1235 1255"></td> <td data-bbox="1235 1192 1390 1255"></td> <td data-bbox="1390 1192 1442 1255"></td> </tr> </tbody> </table> <p>If application code utilizes indirect addressing to manipulate bits in Boolean_Array, it is extremely important to keep indexes within valid limits. If application code uses an index greater than 63 for Boolean_Array, a major recoverable fault of Type 04/Code20 should occur. However, in this scenario, the controller will not fault. Instead, the data will be written to the next tag below Boolean_Array. For example, if the index is 64, it will actually manipulate the member Test_Bit. If the value of index is greater than 64, it will then begin affecting the member Dint_Value. The major recoverable fault Type 04/Code 20 will be logged if the value in the indirect address causes the code to write outside the UDT.</p> <p style="text-align: right;">Lgx00122441, Lgx00120456</p>	Members:		Data Type Size: 16 byte(s)				Name	Data Type	Style	Des	■	Boolean_Array	BOOL[64]	Decimal			Test_Bit	BOOL	Decimal			Dint_Value	DINT	Decimal		10 ⁴ 010				
Members:		Data Type Size: 16 byte(s)																													
	Name	Data Type	Style	Des																											
■	Boolean_Array	BOOL[64]	Decimal																												
	Test_Bit	BOOL	Decimal																												
	Dint_Value	DINT	Decimal																												
10 ⁴ 010																															

Table 11 - Corrected Anomalies with Controller Version 20.00.00

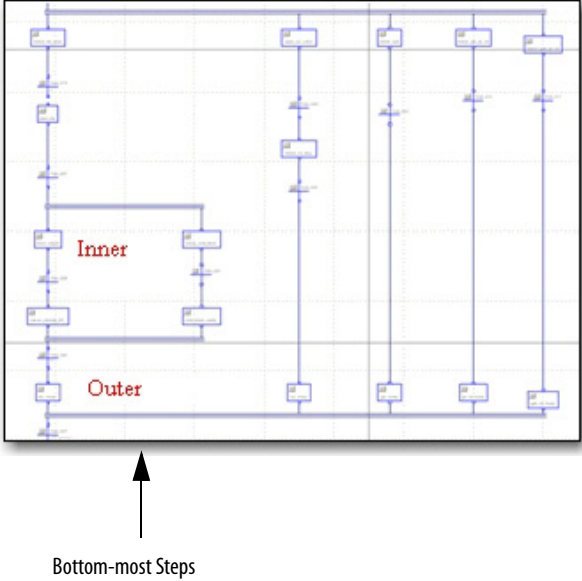
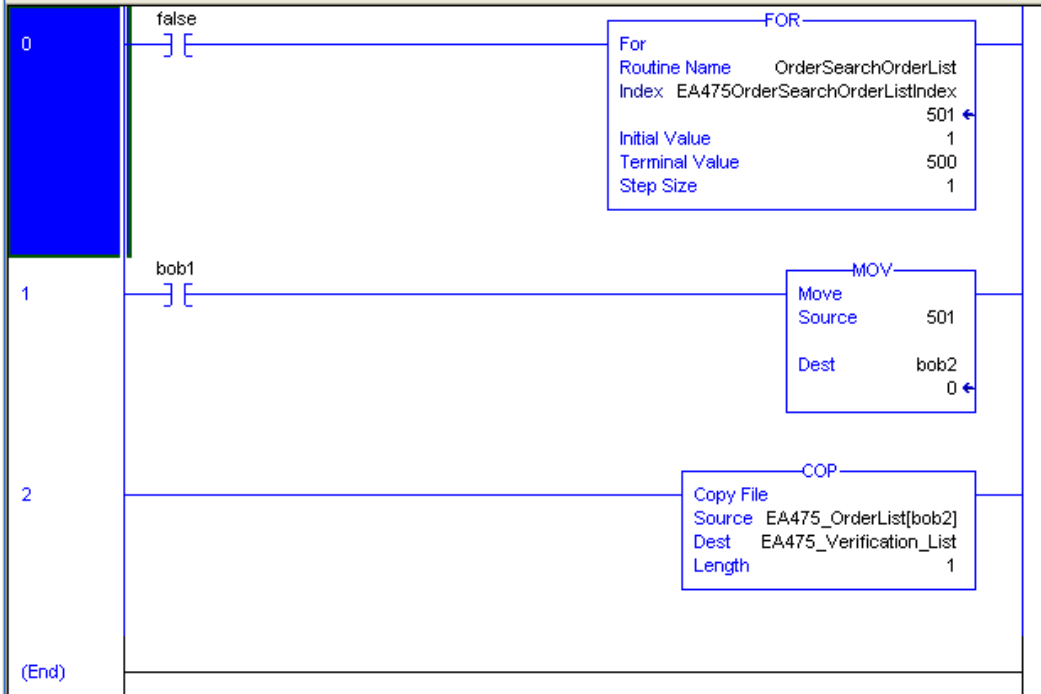
Cat. No.	Description
1789-L10, 1789-L30, 1789-L60	<p data-bbox="363 327 1360 359">CORRECTED: An anomaly can occur when you nest simultaneous branches in a Sequential Function Chart (SFC) routine as shown below.</p> <div data-bbox="386 380 964 957">  </div> <p data-bbox="363 999 1479 1100">During normal operations, the logic does not step out of a simultaneous branch until all of the incoming legs have reached their bottom-most step. In the example shown, the logic does not step out of the Outer simultaneous branch until the leftmost leg has stepped out of the Inner simultaneous branch. The first time through the SFC routine, the application works as expected. On subsequent scans, however, the chart steps out of the Outer simultaneous branch even though the left leg has not reached the Inner simultaneous branch yet.</p> <p data-bbox="363 1104 1479 1157">This behavior occurs because the information in the bottom step, that is, the step next to the word Outer, remains from the previous scan. This stale information incorrectly causes the transition to move on as if the left leg is at the bottom step when it actually is not.</p> <p data-bbox="363 1161 1479 1213">To work around this anomaly, confirm all of the incoming legs have reached their bottom steps in the transition. You can check the .x bits to make sure the bottom-most step of each converging leg is active before allowing the chart to advance. This check can be added to the transition logic already present.</p> <p data-bbox="363 1218 1479 1270">For example, the steps in the following expression are the bottom steps (see graphic above) of the incoming legs. Each step has a timer. The transition does not move on until all of the step timers have reached their preset value.</p> <p data-bbox="363 1274 1117 1295">The expression can be modified to be sure those steps are truly active. This is the original expression:</p> <pre data-bbox="386 1299 1117 1352">// Unit is ready to Transition Step1_ready.dn and Step2_ready.dn and Step3_ready.dn and Step4_ready.dn and Step5_ready.dn</pre> <p data-bbox="363 1356 829 1377">This is the modified expression to work around this anomaly.</p> <pre data-bbox="386 1381 1398 1461">// Unit is ready to Transition Step1_ready.x and Step2_ready.x and Step3_ready.x and Step4_ready.x and Step5_ready.x and Step1_ready.dn and Step2_ready.dn and Step3_ready.dn and Step4_ready.dn and Step5_ready.dn</pre> <p data-bbox="363 1465 899 1486">IMPORTANT: The x bit is cleared when the chart transitions out of a step.</p> <p data-bbox="363 1491 1479 1543">Adding this check to the condition forces the engine to wait until all of those steps are genuinely active before advancing out of the simultaneous branch. Lgx00118188, Lgx00116506</p> <hr/> <p data-bbox="363 1560 1479 1633">CORRECTED: Executing a Home Command (MAH) could cause unintended motion, equal to the negative unwind distance, when the controller executes the final offset move to the home position. The Conversion Constant and the Drive Resolution are the main contributor along with being a rotary axis. Other parameter settings that contribute to this condition are as follows:</p> <ul data-bbox="386 1638 867 1728" style="list-style-type: none"> - Home Mode = Active - Home Sequence = Marker or Switch-Marker - Home Offset = Small incremental distance (that is, 5 degrees) - Rotary Configuration with an unwind <p data-bbox="363 1732 1479 1785">To solve, upgrade to revision 20 of ControlLogix controllers, or for earlier revision periods to revision 20, set the Home Offset position to 0, use a MAM instruction to move the offset distance, then MRP (Motion Redefine Position) to the home position.</p> <p data-bbox="1268 1789 1479 1810" style="text-align: right;">Lgx00124698, Lgx00123947</p>

Table 11 - Corrected Anomalies with Controller Version 20.00.00

Cat. No.	Description
1789-L10, 1789-L30, 1789-L60	<p>CORRECTED: If a FOR instruction is scanned true and an instruction has an index out of range that references a UDT or multi-dimensional array, the controller will fault. Clearing the fault and returning to run mode will cause a nonrecoverable major fault.</p>  <p style="text-align: right;">Lgx00118589, Lgx00113423</p>
	<p>CORRECTED: When producing a UDT that ends with a single BOOL data type and is consumed as a unicast connection, the values in the produced tag are not seen by the consumer and a 203 connection timeout error is shown.</p> <p style="text-align: right;">Lgx00118911, Lgx00116634</p>
	<p>CORRECTED: During online editing, an anomaly can occur when testing edits to a Sequential Function Chart (SFC) routine. Normally, test edits are applied to a test SFC routine and verified before accepting them in the program's logic. When this anomaly occurs, test edits are implemented in the online routine. When the option appears to cancel the program edits, they are accepted despite trying to cancel the online editing operation. There are no workarounds for this anomaly.</p> <p style="text-align: right;">Lgx00119071</p>

Known Anomalies

These anomalies have been identified with version 20 controllers.

Table 12 - Known Anomalies with Version 20 Controllers

Cat. No.	Description
1789-L10, 1789-L30, 1789-L60	<p>When using the Automatic Device Configuration (ADC) feature, the Logix controller 'owns' the configuration in the drive. Do not use the HIM or other external tools, such as DriveExplorer™, to change drive parameters. Doing so may cause a sequence of events to occur that results in the connection between the controller and the drive to be dropped, and causes the controller to not be able to re-establish the connection.</p> <p>Consider using the Write Mask function (drive Parameter 888 - [Write Mask Cfg]) to prevent tools connected to ports other than the Embedded EtherNet/IP port from writing to the drive.</p> <p style="text-align: right;">Lgx00129012, Lgx00129165</p>
	<p>In shipping versions of RSLogix 5000 software, including versions 20, 19, 18, 17 and 16, changes were made to pre-scan execution of Add-on Instructions. In these versions of RSLogix 5000 software, when an Array Index is out of bounds during pre-scan execution of the Add-on Instruction, the instruction is partially executed and the remainder of the instruction execution is skipped during pre-scan.</p> <p style="text-align: right;">Lgx00128323</p>
	<p>SoftLogix 5800 controllers operate differently in integer calculations involving XPY. Operands in XPY are converted to REAL before executing XPY. Multiplication, however, is treated as an integer operation. The increased precision in XPY may lead to discrepancy in behavior compared to using multiplication.</p> <p style="text-align: right;">Lgx00114013</p>
	<p>The use of Windows Vista or Server operating systems does not result in an expected EtherNet/IP configuration error.</p> <p>If you are using the Windows XP operating system and have two EtherNet/IP modules in the same chassis configured with the same IP address, an error is indicated by a red X on top of the last EtherNet/IP module added to the SoftLogix chassis configuration. This is the expected behavior for such a configuration when any of the operating systems is used.</p> <p>However, if you are using Windows Vista or Server operating systems, you can configure two EtherNet/IP modules in one SoftLogix chassis with identical IP addresses. This configuration should result in an error, but does not.</p> <p style="text-align: right;">Lgx00107669, Lgx00107451</p>
	<p>PI function block appears to stop executing as the output does not change and no instruction faults are logged.</p> <p>If the PI instruction is being used in Linear mode, this floating-point equation is used to calculate the ITerm.</p> $Kp \times Wld \times \frac{WldInput + WldInput_{n-1}}{2} \times DeltaT + ITerm_{n-1}$ <p>Due to the use of the single-precision floating point values, it may be possible, depending on the values of WLD and KP, for the ITerm value to be small enough, less than 0.0000001, to be lost when adding to the ITerm_{n-1}.</p> <p>For more information regarding the PI instruction, see the Logix5000 Controllers Process Control and Drives Instructions User Manual, publication 1756-RM006.</p> <p style="text-align: right;">Lgx00070832</p>
	<p>Changes made to the Buffer Timeout value for FactoryTalk Alarms and Events subscribers do not take effect until the existing buffer has been deleted. The FactoryTalk Alarms and Events alarm buffer (stored in Logix controller memory) is designed to persist through power cycles. If you change the Buffer Timeout value (via the Communication Setup dialog box in FactoryTalk View SE software), the controller does not use the new timeout value until the existing buffer is deleted and then recreated. To force recreation of this buffer, do one of the following:</p> <ul style="list-style-type: none"> • Redownload the project to the controller. • Disconnect the FactoryTalk Alarms and Events subscriber and leave it disconnected until the existing timeout expires. <p style="text-align: right;">Lgx00069461</p>

Table 12 - Known Anomalies with Version 20 Controllers

Cat. No.	Description
1789-L10, 1789-L30, 1789-L60	<p>Under some rare occurrences, if a Motion Axis Move (MAM) instruction with Merge Enabled is activated during the deceleration segment of an active MAM instruction then the new MAM instruction may overshoot its programmed endpoint. The occurrence of the overshoot depends on the following factors:</p> <ul style="list-style-type: none"> • The original MAM instruction's remaining travel distance at the time of the merge and the new MAM instruction's remaining travel distance • The relationship of the decel jerk of the new MAM instruction to the decel jerk of the original MAM instruction • If the original MAM instruction is decelerating <p>Typically, the overshoot does not occur. If either of the following conditions exist, you will avoid the overshoot:</p> <ul style="list-style-type: none"> • The new MAM instruction is programmed with Merge Disabled. If there is no other motion active at the time of the merge, then the Merge Disable results in the same operation as the Merge Enable. • The new MAM instruction has a slightly higher jerk (in units/seconds³) than the original MAM instruction. You should note, though, lower value of jerk in % of time results in higher value of jerk (in units/seconds³). <p style="text-align: right;">Lgx00078822</p>
	<p>If a Motion Group Shutdown Reset (MGSR) instruction is executed while a Motion Group Shutdown (MGSD) is still executing, motion error #7, that is, Shutdown State Error, results.</p> <p>The purpose of an MGSR instruction is to bring an axis group out of the shutdown state. However, when the scenario described in the previous paragraph exists, the MGSR instruction is not executed because the shutdown procedure, initiated by the MGSD instruction, has precedence. Thus, the MGSR instruction generates motion error #7 because the shutdown procedure has not completed. The shutdown procedure must complete before any attempt to reset the shutdown.</p> <p style="text-align: right;">Lgx00095484</p>
<hr/> <p>IMPORTANT This anomaly occurs only in SERCOS applications that use Kinetix® SERCOS drives and linear motors.</p> <hr/>	
	<p>Under certain conditions, it is possible that the Real Time Axis attribute VelocityFeedback contains an incorrect value. The inaccuracy is the result of incorrect scaling of that attribute.</p> <p>Your program will have an incorrect value for the VelocityFeedback attribute if you follow these steps.</p> <ol style="list-style-type: none"> 1. While offline, you write your RSLogix 5000 program and, as part of that program, the VelocityFeedback attribute is selected. 2. You save the program and download it to the controller. 3. You go online. <p>The VelocityFeedback attribute value is incorrect because that attribute was enabled before the program was saved, downloaded, and put online. To work around this anomaly, do not enable the VelocityFeedback attribute until the RSLogix 5000 program is online.</p> <p style="text-align: right;">Lgx00107793</p>
	<p>In SFCs, when using time-limited actions in steps, if the program stays on a given step for greater than 24 days (2**32 ms) the timers accumulate (ACC) will roll over and the action body starts to execute again.</p> <p>The time-limited action initializes its timer when it starts (step is first scanned). On subsequent scans, it compares the timers PRE and ACC value. If ACC < PRE, the action body will execute. If ACC >= PRE, it is not executed. When the roll over occurs, the ACC, PRE and the action body will again execute when it should not.</p> <p style="text-align: right;">Lgx00124689, Lgx00124697</p>
	<p>The controller only supports three active reconfigure messages at a time. If more than three are triggered at a time, they will complete (DN bit will go high), but not all the modules will be reconfigured.</p> <p>For example, if you send five reconfiguration messages at the same time, three reconfigure messages will truly complete (DN bit will go high), and the I/O modules will be reconfigured. The other two reconfigure messages will indicate complete (DN bit will go high), but the I/O modules will not be reconfigured. In this case, the last two should have errored (ER bit), but do not.</p> <p style="text-align: right;">Lgx00125204, Lgx00124996</p>

Table 12 - Known Anomalies with Version 20 Controllers

Cat. No.	Description
1789-L10, 1789-L30, 1789-L60	<p data-bbox="342 327 946 359">Log On to FactoryTalk Dialog Box Displays When Launching RSLogix 5000 Software</p> <p data-bbox="342 359 1479 453">When launching RSLogix 5000 software, the Log On to FactoryTalk dialog box may be displayed. This dialog box may be seen when you do not have Administrator privileges on the personal computer and the current user does not exist in the FactoryTalk directory. If this dialog box is cancelled, the RSLogix 5000 software will not be launched. When the dialog box is displayed, entering the credentials for a user that has Administrator privileges on the personal computer will then allow RSLogix 5000 software to be launched.</p> <p data-bbox="342 485 1479 537">To avoid seeing this dialog box, you can add the current user or user group to the FactoryTalk directory. Follow these steps to add a user or user group to the FactoryTalk directory.</p> <ol data-bbox="342 537 1479 789" style="list-style-type: none"> <li data-bbox="342 537 946 558">1. Launch the FactoryTalk Administration Console (available from the Start menu). <li data-bbox="342 558 708 579">2. Select the Network directory when prompted. (You may need to provide credentials for a user with Administrator privileges to continue.) <li data-bbox="342 611 1479 663">3. To allow access for a particular user, navigate to Network\System\Users and Groups\Users, right-click the Users folder and choose New>Windows Linked User. <li data-bbox="342 663 854 716">4. Click Add and provide the domain\logon name for the desired user. (You can click Check Names to verify that the name was found.) <li data-bbox="342 716 1479 768">5. To allow access for all authenticated users, navigate to Network\System\Users and Groups\User Groups, right-click the User Groups folder and choose New>Windows Linked User Group. <li data-bbox="342 768 870 789">6. Click Add and type the name of the user group, Authenticated Users. <p data-bbox="342 821 1479 915">The Log On to FactoryTalk dialog box may also display when using Remote Desktop to connect to the personal computer running RSLogix 5000 software. This is due to FactoryTalk Security not recognizing the computer name. To enable access through Remote Desktop for a specific computer, you should add the name of the computer initiating the Remote Desktop connection to the Network\System\Computers and Groups\Computers folder in the FactoryTalk Administration Console.</p> <p data-bbox="342 926 740 947">To allow all computers to connect, follow these steps.</p> <ol data-bbox="342 947 1479 1020" style="list-style-type: none"> <li data-bbox="342 947 1179 968">1. Open the FactoryTalk Administration Console and log in to the Network directory using your domain credentials. <li data-bbox="342 968 1479 1020">2. Navigate to Network\System\Security Policy. In the Computer Policy Settings section, set Identify terminal server clients using the name of to Server Computer. <p data-bbox="342 1052 1479 1104">IMPORTANT: If Use single sign-on is set to disable in FactoryTalk software, then the Log On to FactoryTalk dialog box will be displayed each time RSLogix 5000 software is launched and proper user credentials must be entered to continue. (By default, 'Use single sign-on' is set to enable.)</p> <p data-bbox="1373 1104 1479 1125" style="text-align: right;">Lgx00124955</p>
	<p data-bbox="342 1146 1479 1199">Micro830™ controllers will cause an error when opening the SoftLogix Chassis Monitor. To avoid this problem, delete these keys in your registry after plugging in the Micro830 controller:</p> <p data-bbox="342 1230 1227 1251">HKEY_LOCAL_MACHINE\SOFTWARE\Rockwell Automation\VirtualBackplaneMonitor\Installed Modules\0001!000E!00XX</p> <p data-bbox="342 1283 472 1629"> 0001!000E!007B 0001!000E!007C 0001!000E!007D 0001!000E!007E 0001!000E!007F 0001!000E!0080 0001!000E!0081 0001!000E!0082 0001!000E!0087 0001!000E!0088 0001!000E!0089 0001!000E!008A </p> <p data-bbox="1373 1640 1479 1661" style="text-align: right;">Lgx00125634</p>
	<p data-bbox="342 1671 1479 1755">The SoftLogix 5800 controller gives different results than hard controllers when performing a divide instruction with 0/0. The result on a hard controller is '1.\$' (infinity), while on a SoftLogix 5800 controller, it is '0.0'. This is because in the Windows operating system, '0' will be converted to a DINT before dividing, while in hard controllers, '0' is treated as REAL.</p> <p data-bbox="1373 1755 1479 1776" style="text-align: right;">Lgx00123474</p>

Restrictions

These restrictions exist for version 20 controllers.

Table 13 - Restrictions with Version 20 Controllers

Restriction	Description
Remotely accessing the SoftLogix 5800 controller results in a system crash.	Do not attempt to remotely access the computer running the SoftLogix 5800 controller. If you attempt to remotely access a computer running the SoftLogix 5800 controller, the system running the SoftLogix 5800 controller crashes.
External access options have software requirements.	For best results with the new External Access tag attributes provided with RSLinx 5000 software, version 18.00.00, and controller version 18.00.00, use RSLinx Classic software, version 2.56, and RSLinx Enterprise software, version 5.21 or later. Using earlier versions of RSLinx Classic and RSLinx Enterprise software may result in anomalous behavior from the data servers with the External Access options Read Only and None. For more information about tag data access attributes, see the Logix5000 Controllers I/O and Tag Data Programming Manual, publication 1756-PM004 . Lgx00103263
Repeated minor faults can cause the controller to display a red X.	If your SoftLogix 5800 controller experiences repeated minor faults, it may display a red X. This happens only in systems in which minor faults are repeatedly generated on each program scan. To avoid this, correct any programs that may cause repeated minor faults to occur.
Trends may momentarily block the SoftLogix 5800 thread from executing.	Running or stopping a trend momentarily blocks the SoftLogix 5800 thread from executing. Depending on your application and system performance, this can affect motion by causing increased errors in axis position or velocity. Controllers containing programs that generate motion should be in Program mode when starting or stopping a trend.
Downloading to a SoftLogix 5800 controller while another controller in the chassis is running a motion application may affect the motion application.	Do not perform a download to a SoftLogix 5800 controller in the chassis while another controller in the same chassis is running a motion application. Doing so may impact the motion execution.
Be sure to only single-click the SoftLogix 5800 icon during installation.	Do not double-click the SoftLogix 5800 icon on the installation browser dialog box. This can cause two copies of the SoftLogix 5800 installation procedure to launch. If two copies of the installation program start, you may not be able to perform a normal uninstall. If this occurs, you will see this error message when an uninstall is attempted: 'Failed to load dll: _UninstallImp'. If this situation occurs, you have to manually uninstall the program. The manual uninstall procedure is available as Knowledgebase document KB22639.
Avoid mixed operand types between the destination and its inputs.	For maximum portability across platforms, it is best to avoid mixed operand types between the destination and its inputs. If getting identical results for similar operations across languages is important to you, make sure to perform floating point operations. However, floating point operations do not perform as well. Other considerations exist as well, such as how compatible your operands are with that of the I/O being used and so on.
Incorrect setting for .Initialize bit may cause incorrect function block execution values.	When you perform a Partial Import Online (PIO) of a function block routine that contains S-Curve function blocks across Logix platforms, set the .Initialize bit in the backing tag control structure of all S-Curve instructions. This configuration causes the S-Curve instructions to re-initialize themselves. Failure to set the .Initialize bit in the backing tag control structure of all S-Curve instructions, may cause the S-Curve function block to execute with uninitialized values. Lgx00114927, Lgx00114935
Download of converted RSLinx 5000 project to SoftLogix 5800 controller causes need for additional tasks.	The Totalizer (TOT) instruction may not function properly when a converted project is downloaded to a SoftLogix 5800 controller, catalog number 1789-L10, 1789-L30, or 1789-L60, version 20.00.00 or later. This anomaly may occur under these conditions: <ul style="list-style-type: none"> An RSLinx 5000 project is running on a SoftLogix 5800 controller, catalog number 1789-L10, 1789-L30, or 1789-L60, version 18.00.00 or earlier, with the TOT instruction in Run mode. The project is uploaded and saved to a new file. The new file is changed to use a SoftLogix 5800 controller, catalog number 1789-L10, 1789-L30, or 1789-L60, version 19.00.00 or later and is downloaded to a new controller of the same catalog number. The project transitions to Run mode. Upon transitioning to Run mode, the TOT instruction's output value is different from the last value generated when the same project was running on the first controller. To reset an invalid Totalizer value, set the ProgResetReq or OperResetReq to move the value of the instruction's Reset input parameter to the instruction's Total output parameter. Repeat this task once more to move the invalid value out of the instruction's OldTotal output parameter. Lgx00114767, Lgx00116677, Lgx00114731
Logix CPU security tool.	The Logix CPU security tool does not work with version 20 controllers.
RSLinx 5000 Clock Update Tool.	The RSLinx 5000 Clock Update tool does not support Windows 7 or Windows Server 2008 operating systems.

Performing Typed Operations

Consider the following when performing typed operations.

Typed Operation	Description
Across Logix platforms	<p>Due to the fact that the SoftLogix family is based on open systems technology, the controller performs computational operations much the same way as open systems platforms and tools. This becomes important when performing mixed typed operations, such as dividing two integers and storing the result in a real. Integer operations typically truncate the rational portion of a computation result while floating point operations preserve it.</p> <p>For example, when a SoftLogix program performs $a = n / m$ where the data types for 'a', 'n', and 'm' are real, integer, and integer respectively, this specifies an integer divide between 'n' and 'm' and places the answer into 'a', performing an integer to real conversion. If $n = 800$ and $m = 1000$, the result is 0 and gets stored into 'a' as 0.0.</p> <p>Alternatively, when a ControlLogix program performs the same $a = n / m$ where the data types for 'a', 'n', and 'm' are real, integer, and integer respectively, this specifies a floating point divide between 'n' and 'm' and places the answer into 'a', with no conversion needed. If $n = 800$ and $m = 1000$, the result is 0.8 and gets stored into 'a' as 0.8.</p> <p>In SoftLogix software, the input operand types dictate the operation while in the ControlLogix program, if any of the operands are real, a floating point operation is performed. SoftLogix software performs the operation exactly like a C routine would.</p>
Across languages	<p>There are instruction differences across programming languages as well as across Logix platforms. The following examples use the operation $i = n / m$ where all the operands are integers.</p> <p>Ladder DIV instructions perform an integer divide operation and store the immediate result in the destination. For $n = 800$ and $m = 1000$, 'i' is equal to 0. The DIV function block instructions only does floating point operation. The function block instruction converts the inputs to reals (if necessary) and then converts the result from a real to the destination type (if necessary). In this example, 'n' is converted to 800.0 and 'm' is converted to 1000.0. The result of the operation is 0.8. That result then gets converted to an integer where rounding rules apply and the final destination value is 1.</p> <p>This difference between ladder and function block instructions applies to all Logix platforms. Function block instructions perform only floating point operations.</p>


Functionality Issues in Specific Circumstances

You may experience some or all of these issues when programming or using your SoftLogix 5800 controller.

Table 14 - Possible Functionality Issues

Issue	Description
Performance	<p>Performance-related considerations that should be made are as follows:</p> <ul style="list-style-type: none"> The latest drivers for various items like video and networking devices may be required for satisfactory system operation. We recommend that you use Microsoft-certified drivers for video cards and Ethernet NICs if performance problems are observed when running motion applications. Certified drivers can be found on the Microsoft website. You can also use Windows Update utility to update drivers on Windows 2000/XP systems or see the website of the hardware manufacturer. Disable all graphical screen savers, especially OpenGL, when running motion applications.
General	<p>If you use drive image software to duplicate your hard disk drive to deploy multiple SoftLogix 5800 systems, follow these steps to be sure of proper operation of the systems. The installation of a SoftLogix controller on a computer generates a unique CIP serial number that is used to identify messages from that node on the network. This serial number must be unique for every SoftLogix 5800 computer in the system.</p> <ol style="list-style-type: none"> Prior to running the drive image software to produce the master image, make sure that there are no controllers in the chassis and then terminate the Chassis Monitor by right-clicking the icon in the tool tray and choosing Shutdown Monitor. Delete the key ASASerialNumber from the Windows registry by using the regedit.exe tool provided with your Windows operating system. HKEY_LOCAL_MACHINE\SOFTWARE\Rockwell Automation\VirtualBackplaneMonitor\Installed Modules\0001!000E!000F ASASerialNumber. Create the drive image with the computer in this state, making sure that you do not run the Chassis Monitor again because that will cause the CIP serial number to be regenerated in the registry. <p>After the master image is copied to your new computer and the computer is restarted, a unique CIP serial number will be generated the first time that the Chassis Monitor is launched.</p>
Instruction set	<ul style="list-style-type: none"> If you run SoftLogix 5800 software and you perform continuous messaging or block-transfers where the instructions are triggered by their own enable bits (.EN), there is a potential for the instructions to stop executing and remain in a state with only the enable bit set. The SoftLogix 5800 controller may stop responding and require removal and re-insertion in the virtual chassis to recover from this fault. The RSLogix 5000 project will also have to be re-downloaded. You can prevent this problem by using the Cache Connections option on the Communications tab of the message configuration dialog box. You can cache as many as 32 instructions with any combination of message instructions and block-transfer instructions. For example, you can cache 28 message instructions and 4 block-transfer instructions. If you configure more than 32 cached connections, some of the connections will be made without caching, which causes this issue to continue to occur. In general, lower the frequency of less critical messages/block-transfers and use caching for critical messages/block-transfers. The SoftLogix 5800 controller executes on a 32-bit microprocessor, which can perform 80-bit floating point operations. Due to extensive accuracy, comparisons between one REAL operand and another could reveal small differences in the lesser significant digits (for example, 1.000005 and 1.000052). As an alternative, use the LIM instruction when REAL operands are involved.
Motion card	<p>IMPORTANT If you have a virtual axis on a SoftLogix 5800 controller as a master reference, you must also have a physical axis in the same motion group on the same controller. Avoid producing a virtual axis on one controller and then consuming that axis on another controller in the virtual chassis that contains the slave axis. You cannot obtain smooth motion on any of the slave axes in this scenario if the controller with the virtual axis does not contain a physical axis.</p>

Table 14 - Possible Functionality Issues

Issue	Description						
1784-PCIDS DeviceNet module	<ul style="list-style-type: none"> <li data-bbox="597 331 1474 499">If you place the SoftLogix 5800 controller in Program mode with DeviceNet I/O currently mapped through a 1784-PCIDS module, and then you use RSNetWorx software to change the data mapping on the network, the controller does not detect this change until the 1784-PCIDS module is reset. You can reset the module in the RSLogix 5000 Controller Organizer. Right-click the module and choose Properties. Then click the Module Info tab and click Reset Module. You can also reset the module by removing and re-inserting the module in the SoftLogix chassis. You can reset the module while the SoftLogix 5800 controller is running. The connections are automatically established after the 1784-PCIDS module is reset. <div data-bbox="634 531 1425 646" style="border: 1px solid black; padding: 5px; margin: 10px 0;">  <p data-bbox="850 541 1398 632">ATTENTION: Do not reset a module that is currently being used for control. The connection to the module will be broken and control might be interrupted.</p> </div> <ul style="list-style-type: none"> <li data-bbox="597 678 1474 730">The 1784-PCIDS card in the SoftLogix 5800 chassis uses the CommandRegister bits the same way as a 1756-DNB module. Use the CommandRegister.Run bit to enable/disable output data on the DeviceNet I/O network. <table border="1" data-bbox="634 762 1425 1020" style="width: 100%; border-collapse: collapse;"> <thead> <tr> <th data-bbox="634 762 971 804">When CommandRegister.Run is set to</th> <th data-bbox="971 762 1425 804">The 1784-PCIDS card</th> </tr> </thead> <tbody> <tr> <td data-bbox="634 804 971 926">Zero (0)</td> <td data-bbox="971 804 1425 926">Is in Idle mode. In Idle mode, the card still receives inputs from its slave devices on the network, but the card does not send active output data to the devices.</td> </tr> <tr> <td data-bbox="634 926 971 1020">One (1)</td> <td data-bbox="971 926 1425 1020">Is in Run mode. In Run mode, the card sends active outputs on the network and receives inputs.</td> </tr> </tbody> </table>	When CommandRegister.Run is set to	The 1784-PCIDS card	Zero (0)	Is in Idle mode. In Idle mode, the card still receives inputs from its slave devices on the network, but the card does not send active output data to the devices.	One (1)	Is in Run mode. In Run mode, the card sends active outputs on the network and receives inputs.
When CommandRegister.Run is set to	The 1784-PCIDS card						
Zero (0)	Is in Idle mode. In Idle mode, the card still receives inputs from its slave devices on the network, but the card does not send active output data to the devices.						
One (1)	Is in Run mode. In Run mode, the card sends active outputs on the network and receives inputs.						

For more information on configuring your SoftLogix 5800 system, see the SoftLogix 5800 System User Manual, publication [1789-UM002](#).

Install the Controller

To install the SoftLogix 5800 controller, run the install.exe file available on the installation CD. This executable file launches a browser you can use to install the SoftLogix 5800 controller.

IMPORTANT

Consider the following before a SoftLogix 5800 controller:

- Install RSLinx software before installing the SoftLogix 5800 controller.
- You must add the virtual backplane driver to slot 0 of the SoftLogix 5800 controller before you can use RSLinx 5000 software to connect to the SoftLogix 5800 controller. If you do not install the virtual backplane driver, you can not use persistent storage.
- When using the SoftLogix 5800 controller, make sure RSLinx communication software is operating as a service and not an application.
- Make sure .Net is installed on your computer before installing the SoftLogix 5800 controller. .Net can be installed from the SoftLogix or RSLinx 5000 software CD.

During installation of the SoftLogix 5800 controller, the installation utility verifies that the correct version of .Net is installed. If you do not have .Net on your computer, you cannot install the controller.

Use Add/Remove Programs in the control panel to remove previous versions of the SoftLogix 5800 controller. When installing or uninstalling, note any messages that recommend a system restart. Failure to follow the restart instructions can render your installation inoperable.

For more information about installing the controller, see the SoftLogix 5800 Controller Installation Instructions, publication [1789-IN001](#).

Use Motion Drivers in Windows XP Systems

The Windows XP System Restore feature affects how motion runs on a SoftLogix 5800 controller. When System Restore is enabled, random motion retries occur, which may result in irregular motion and/or motion issues.

About System Restore

The System Restore feature provides a way to restore the system to a previously known state that would otherwise require you to reinstall an application or even the entire operating system. Applications that are compatible with Windows XP operating systems integrate with System Restore to create a restore point before an installation begins. By default, the feature creates a restore point every 24 hours while the system is operational. It does this by creating a restore point directory and then creating a snapshot of a set of critical system files, including parts of the registry. System Restore tracks changes to files and directories, and saves copies of files that are being changed or deleted in a change log. Restore point data is maintained on a per-volume basis.

Disable System Restore

For motion to operate correctly, you must disable System Restore.

1. From the Start Menu, right-click My Computer and choose Properties.

The System Properties page displays.

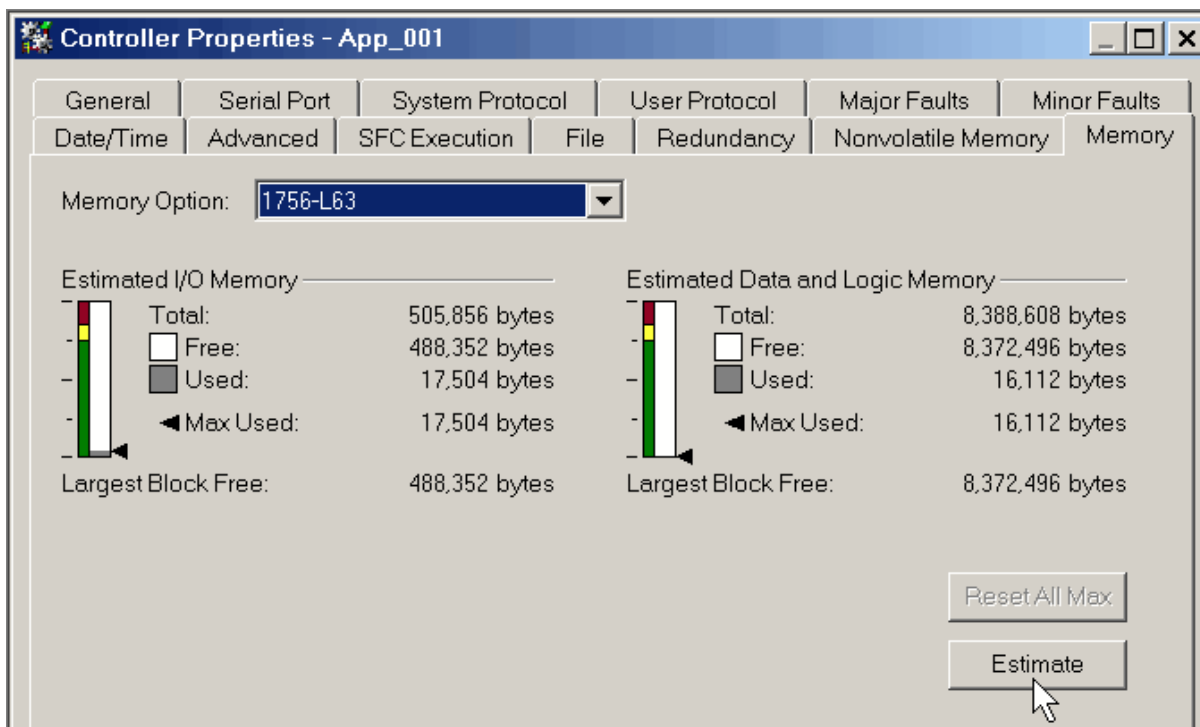
2. On the Systems Properties page, click the System Restore tab.
3. Check Turn off System Restore.
4. Click OK so the change takes effect.

Additional Memory Requirements

This controller version may require more memory than previous versions (for example, 10.x, 11.x). To estimate additional memory requirements for your application, you can either use the memory estimation tool provided with RSLogix 5000 software or the tables provided in these release notes.

Use the Estimate Tool

To estimate the amount of memory required by your application, convert the project to the controller version desired and use the Estimate tool available in the Memory tab of the Controller Properties.



Estimate Based on Application Components

If you do not have the desired version of RSLogix 5000 software, use this table to estimate the additional memory that your project may require.

If you are upgrading your system through multiple controller versions, add all components your application uses for each of the versions you upgrade through.

For example, if you are upgrading from version 15.x to version 20.x, total your application components for revisions 15.x to 16.x, 16.x to 17.x, 17.x to 18.x, 18.x to 19.x, and 19.x to 20.x.

Table 15 - Estimate Additional Memory

If you upgrade from revision (add all that apply)	Then add the following memory requirements to your project		Which comes from this type of memory		
	Component	Increase/Decrease Per Instance	I/O	Data and Logic	Safety
19.x to 20.x	Task	+ 1312 bytes		✓	
	Program	+ 16 bytes		✓	
	Equipment phase	+ 8bytes		✓	
	Routine	+ 24 bytes		✓	
	Add-On Instruction	+ 32 bytes		✓	
	Project with any tags that use ALARM_ANALOG or ALARM_DIGITAL data type	- 76 bytes		✓	
	Tag that uses ALARM_ANALOG data type	+ 4 bytes		✓	
	Tag that uses ALARM_DIGITAL data type	+ 24 bytes		✓	
	Tag that uses MOTION_GROUP data type	+ 56 bytes		✓	
	Tag that uses COORDINATE_SYSTEM data type	+ 940 bytes		✓	
	Tag that uses AXIS_CIP_DRIVE data type	+ 676 bytes		✓	
	Tag that uses AXIS data type other than AXIS_CIP_DRIVE	+672 bytes		✓	
	Standard Produced tag	+ 4 bytes + (4 bytes x number of consumers)	✓		
	Standard Consumed tag	+ 12 bytes	✓		
	Safety Produced tag	+ 4 bytes		✓	
	Safety Consumed tag	+ 4 bytes		✓	
	I/O module	+ 8 bytes		✓	
	Module input connection	+ 4 bytes		✓	
	Module output connection	+ 4 bytes		✓	
	For each controller (> 1 Kb change):				
	1756-L6x	+ 1264 bytes		✓	
	1756-L6x	+ 1268 bytes	✓		
	1756-L6xS	+ 1264 bytes		✓	
1756-L6xS	+1316 bytes	✓			
1756-L6xS	+ 1312 bytes			✓	
1756-L7x	+ 5588 bytes		✓		
1756-L7x	+ 1296 bytes	✓			

Table 15 - Estimate Additional Memory

If you upgrade from revision (add all that apply)	Then add the following memory requirements to your project		Which comes from this type of memory		
	Component	Increase/Decrease Per Instance	I/O	Data and Logic	Safety
19.x to 20.x	1768-L4x, 1768-L4xS	+1212 bytes		✓	
	1768-L4x	+ 1292 bytes	✓		
	1768-L4xS	+ 1340 bytes	✓		
	1768-L4xS	+ 1312 bytes			✓
	1769-L23	+2488 bytes	✓		
	1769-L31	+2492 bytes	✓		
	1769-L32C, 1769-L35CR	+ 2812 bytes	✓		
	1769-L32E, 1769-L35E	+ 2496 bytes	✓		
18.x to 19.x		<no change>			
17.x to 18.x	Program	+ 8 bytes		✓	
	Equipment phase	+ 20 bytes		✓	
	Add-On Instruction	+ 12 bytes		✓	
	Each tag In addition, if you use a tag of the types listed below, increase the memory as indicated for each instance:	+ 4 bytes		✓	
	Produced tag	+ 36 bytes + (24 bytes * number of consumers)	✓		
	Consumed tag	+ 24 bytes	✓		
	Data access control	+ 4 bytes per symbol		✓	
	Tag that uses ALARM_ANALOG data type	- 20 bytes		✓	
	Tag that uses ALARM_DIGITAL data type	+ 28 bytes		✓	
	Tag that uses MOTION_GROUP data type	+ 76		✓	
	Tag that uses AXIS_SERVO_DRIVE or AXIS_GENERIC_DRIVE data type	+ 786 bytes		✓	
	Tag that uses AXIS data type other than AXIS_SERVO_DRIVE or AXIS_GENERIC_DRIVE	+ 818 bytes		✓	
	Tag that uses COORDINATE_SYSTEM data type with no transform dimensions	+ 40 bytes		✓	
	Tag that uses COORDINATE_SYSTEM data type with transform dimensions	+ 100 bytes		✓	
	Module input connection	+ 20 bytes		✓	
Module output connection	+ 24 bytes		✓		
Safety controller	- 8 bytes		✓		
Safety partner	- 8 bytes		✓		

Table 15 - Estimate Additional Memory

If you upgrade from revision (add all that apply)	Then add the following memory requirements to your project		Which comes from this type of memory		
	Component	Increase/Decrease Per Instance	I/O	Data and Logic	Safety
17.x to 18.x	For each controller (> 1 Kb change):				
	1756-L6x, 1756-L6xS, 1756-L63XT	+ 16,728 bytes		✓	
	1768-L4x, 1768-L4xS	+ 14,448 bytes		✓	
	1769-L2x	+ 35,084 bytes	✓		
	1769-L31	+ 14,740 bytes	✓		
	1769-L32C, 1769-L35CR	+ 35,400 bytes	✓		
	1769-L32E, 1769-L35E	+ 35,036 bytes	✓		
	1789-L10, 1789-L30, 1789-L60	+ 4992	✓		

Table 15 - Estimate Additional Memory

If you upgrade from revision (add all that apply)	Then add the following memory requirements to your project		Which comes from this type of memory			
	Component	Increase/Decrease Per Instance	I/O	Data and Logic	Safety	
16.x to 17.x	Task	+ 4 bytes		✓		
	Program	+ 4 bytes		✓		
	Equipment phase	+ 8 bytes		✓		
	LD routine	+ 12 bytes		✓		
	FBD routine	- 8 bytes		✓		
	SFC routine	+ 28 bytes		✓		
	ST routine	+ 4 bytes		✓		
	Add-On Instruction	- 12 bytes		✓		
	If you use a tag of the types listed below, increase the memory as indicated for each instance:					
	Produced tag	+ [4 bytes + (4 bytes * number of consumers)]	✓			
	Consumed tag	+ 8 bytes	✓			
	Tag that uses MESSAGE data type	+ 4 bytes		✓		
	Tag that uses ALARM_ANALOG data type	- 64 bytes		✓		
	Tag that uses ALARM_DIGITAL data type	- 28 bytes		✓		
	Tag that uses AXIS_SERVO_DRIVE or AXIS_GENERIC_DRIVE data type	- 34 bytes (2 bytes x number of output cam execution targets)		✓		
	Tag that uses AXIS data type other than AXIS_SERVO_DRIVE or AXIS_GENERIC_DRIVE	- 52 bytes (2 bytes x number of output cam execution targets)		✓		
Tag that uses COORDINATE_SYSTEM data type of 2 dimensions with 2 transform dimensions	+ 20 bytes		✓			
Tag that uses COORDINATE_SYSTEM data type of 3 dimensions with 3 transform dimensions	+ 108 bytes		✓			

Table 15 - Estimate Additional Memory

If you upgrade from revision (add all that apply)	Then add the following memory requirements to your project		Which comes from this type of memory		
	Component	Increase/Decrease Per Instance	I/O	Data and Logic	Safety
15.x to 16.x	If you use a tag of the types listed below, increase the memory as indicated for each instance:				
	Tag that uses ALARM_ANALOG data type (with no associated tag references)	+ 16 bytes		✓	
	Tag that uses ALARM_DIGITAL data type (with no associated tag references)	+ 4 bytes		✓	
	Tag that uses ALARM_ANALOG data type (if associated tags are configured for the ALARM_ANALOG tag)	+ 22 bytes + (9 x the number of configured, associated tags) + (3 x the sum of the bytes used by the data type of each of the configured associated tags) For example, an analog alarm moved to version 16.03.00 with two Associated Tags – one DINT (4 bytes) and one STRING (88 bytes) would need to add: $22 + 9(2) + 3(92) = 316$ bytes		✓	
	Tag that uses the COORDINATE_SYSTEM data type	+ 132 bytes		✓	
14.x to 15.x	Input module	+ 4 bytes	✓		
	If you use a tag of the types listed below, increase the memory as indicated for each instance:				
	Produced tag	+ 12 bytes	✓		
	Consumed tag	+ 4 bytes	✓		
	Tag that uses COORDINATE_SYSTEM data type	+ 748 bytes		✓	
	Tag the uses any AXIS data type	+ 800 bytes		✓	
	Task	+ 20 bytes		✓	
	Program or equipment phase	+ 24 bytes		✓	
	Routine	+ 4 bytes		✓	
	Serial port	+ 1120 bytes		✓	
	Project	+ 4012 bytes		✓	

Table 15 - Estimate Additional Memory

If you upgrade from revision (add all that apply)	Then add the following memory requirements to your project		Which comes from this type of memory		
	Component	Increase/Decrease Per Instance	I/O	Data and Logic	Safety
13.x to 14.x	If you use a tag of the types listed below, increase the memory as indicated for each instance:				
	Tag that uses the COORDINATE SYSTEM data type	+ 60 bytes		✓	
	Tag that uses any AXIS data type	+ 4 bytes		✓	
12.x to 13.x	Program	+ 12 bytes		✓	
	Task	+ 4 bytes		✓	
	User-defined data type	+ 4 bytes		✓	
	I/O module	+ 16 bytes	✓ (8 bytes)	✓ (8 bytes)	
	If you use a tag of the types listed below, increase the memory as indicated for each instance:				
	Produced tag	+ 8 bytes	✓		
	Consumed tag	+ 8 bytes	✓		
11.x to 12.x	I/O module with a comm format = Rack Optimization	+ 90 bytes		✓	
	I/O module with a comm format = something other than Rack Optimization (such as a direct connection)	+ 144 bytes		✓	
	CompactLogix 1769 I/O module	+ 170 bytes		✓	
	Bridge module with a comm format = None	+ 160 bytes		✓	
	Bridge module with a comm format = Rack Optimization	+ 220 bytes		✓	
10.x to 11.x	User-defined data type <ul style="list-style-type: none"> Number of user-defined data types in the controller organizer > Data Types folder > User-Defined folder Not the use of that data type in tags 	+ 128 bytes		✓	
	Indirect address (using a tag as the subscript for an array in an instruction, such as an Array_A[Tag_B]). This memory change applies only if the array: <ul style="list-style-type: none"> Uses a structure as its data type Does not use one of these data types: CONTROL, COUNTER, PID, or TIMER Has only one dimension (such as UDT_1[5]) 	- 60 bytes		✓	
9.x to 10.x	Program	+ 12 bytes		✓	
	Routine	+ 16 bytes		✓	
8.x to 9.x	If you use a tag of the types listed below, increase the memory as indicated for each instance:				
	Tag that uses the MESSAGE data type	+ 376 bytes		✓	

Table 15 - Estimate Additional Memory

If you upgrade from revision (add all that apply)	Then add the following memory requirements to your project			Which comes from this type of memory			
	Component			Increase/Decrease Per Instance	I/O	Data and Logic	Safety
7.x to 8.x	Project			+ 1050 bytes	✓		
	Tag			+ 0.55 bytes		✓	
	Message that transfers more than 500 bytes of data and targets a controller in the same chassis. This memory is allocated only when the MSG instruction is enabled. To estimate, count the number of these messages that are enabled and/or cached at one time.			+ 2000 bytes	✓		
6.x to 7.x	If you use a tag of the types listed below, increase the memory as indicated for each instance:						
	Base tag			+ 24 bytes		✓	
	Alias tag			+ 16 bytes		✓	
	Produced tag	DINT	4	+ 12 bytes	✓		
		REAL	4	+ 12 bytes	✓		
	Consumed tag	DINT	4	+ 12 bytes			
		REAL	4	+ 12 bytes			
Routine			+ 68 bytes		✓		
5.x to 6.x	Routine			+ 116 bytes		✓	

Notes:

Additional Resources

These documents contain additional information concerning related products from Rockwell Automation.

Resource	Description
Logix5000 Controllers Common Procedures Reference Manual, publication 1756-PM001	Contains information specific to procedures related to programming your controller.
SoftLogix 5800 Controllers, Version 17 Release Notes, publication 1789-RN017	Describes anomalies and enhancements related to controller version 17.
SoftLogix 5800 Controllers, Version 18 Release Notes, publication 1789-RN018	Describes anomalies and enhancements related to controller version 18.
Logix5000 Controllers General Instructions, publication 1756-RM003	Contains information about general instructions.
Logix5000 Motion Controllers Instructions Reference Manual, publication MOTION-RM002	Contains information about motion instructions.
Logix5000 Process Controls and Drives Instructions Reference Manual, publication 1756-RM006	Contains information specific to the PI instruction.

You can view or download publications at <http://www.rockwellautomation.com/literature>. To order paper copies of technical documentation, contact your local Allen-Bradley distributor or Rockwell Automation sales representative.

Tech Notes and other resources are available at the Technical Support Knowledgebase, <http://www.rockwellautomation.com/knowledgebase>.

Rockwell Automation Support

Rockwell Automation provides technical information on the Web to assist you in using its products.

At <http://www.rockwellautomation.com/support> you can find technical and application notes, sample code, and links to software service packs. You can also visit our Support Center at <https://rockwellautomation.custhelp.com/> for software updates, support chats and forums, technical information, FAQs, and to sign up for product notification updates.

In addition, we offer multiple support programs for installation, configuration, and troubleshooting. For more information, contact your local distributor or Rockwell Automation representative, or visit <http://www.rockwellautomation.com/services/online-phone>.

Installation Assistance

If you experience a problem within the first 24 hours of installation, review the information that is contained in this manual. You can contact Customer Support for initial help in getting your product up and running.

United States or Canada	1.440.646.3434
Outside United States or Canada	Use the Worldwide Locator at http://www.rockwellautomation.com/rockwellautomation/support/overview.page , or contact your local Rockwell Automation representative.

New Product Satisfaction Return

Rockwell Automation tests all of its products to help ensure that they are fully operational when shipped from the manufacturing facility. However, if your product is not functioning and needs to be returned, follow these procedures.

United States	Contact your distributor. You must provide a Customer Support case number (call the phone number above to obtain one) to your distributor to complete the return process.
Outside United States	Please contact your local Rockwell Automation representative for the return procedure.

Documentation Feedback

Your comments will help us serve your documentation needs better. If you have any suggestions on how to improve this document, complete this form, publication [RA-DU002](#), available at <http://www.rockwellautomation.com/literature/>.

Allen-Bradley, Rockwell Software, Rockwell Automation, CompactLogix, RSLinx, RSLogix 5000, RSNetWorx, Encompass, SoftLogix, Logix5000, Kinetix, FactoryTalk, ControlFLASH, PowerFlex, Integrated Architecture, ControlLogix, Micro830, and DriveExplorer are trademarks of Rockwell Automation, Inc.

Trademarks not belonging to Rockwell Automation are property of their respective companies.

Rockwell Automation maintains current product environmental information on its website at <http://www.rockwellautomation.com/rockwellautomation/about-us/sustainability-ethics/product-environmental-compliance.page>.

Rockwell Otomasyon Ticaret A.Ş., Kar Plaza İş Merkezi E Blok Kat:6 34752 İçerenköy, İstanbul, Tel: +90 (216) 5698400

www.rockwellautomation.com

Power, Control and Information Solutions Headquarters

Americas: Rockwell Automation, 1201 South Second Street, Milwaukee, WI 53204-2496 USA, Tel: (1) 414.382.2000, Fax: (1) 414.382.4444

Europe/Middle East/Africa: Rockwell Automation NV, Pegasus Park, De Kleetlaan 12a, 1831 Diegem, Belgium, Tel: (32) 2 663 0600, Fax: (32) 2 663 0640

Asia Pacific: Rockwell Automation, Level 14, Core F, Cyberport 3, 100 Cyberport Road, Hong Kong, Tel: (852) 2887 4788, Fax: (852) 2508 1846

Publication 1789-RN519D-EN-P - January 2016

Supersedes Publication 1789-RN519C-EN-P - April 2014

Copyright © 2016 Rockwell Automation, Inc. All rights reserved. Printed in the U.S.A.