

# ControlLogix HART Analog I/O Module

Catalog Number 1756-IF16H

Topic	Page
Before You Begin	2
Dynamic Variables	4
Additional Resources	5

## About This Publication

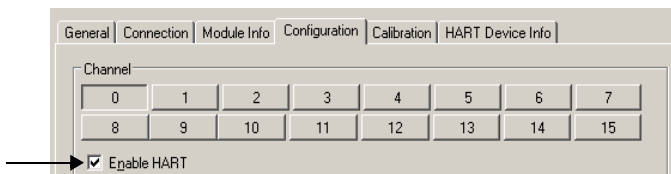
These release notes correspond to firmware revision 1.2 for this HART analog current input module. Use this firmware with RSLogix™ 5000 software, version 15.00 or later.

Refer to the table on [page 4](#) for the command that is used by your module to collect dynamic variable data.

### Before You Begin

Before using your module, you must review these tasks:

- Configure the module in RSLogix 5000 software with the following:
  - Version 15 or later, install the module add-on profile by going to <http://www.rockwellautomation.com/support/downloads.html> and choosing RSLogix 5000 I/O Modules Add-On-Profiles from the list.
- Enable HART data in the module Input Data tag by doing the following:
  - On the Module Properties dialog box, click the Configuration tab and check Enable HART for each channel that you want to use HART features.



You must check Enable HART to see HART data in the Input Tag or to use asset management software.

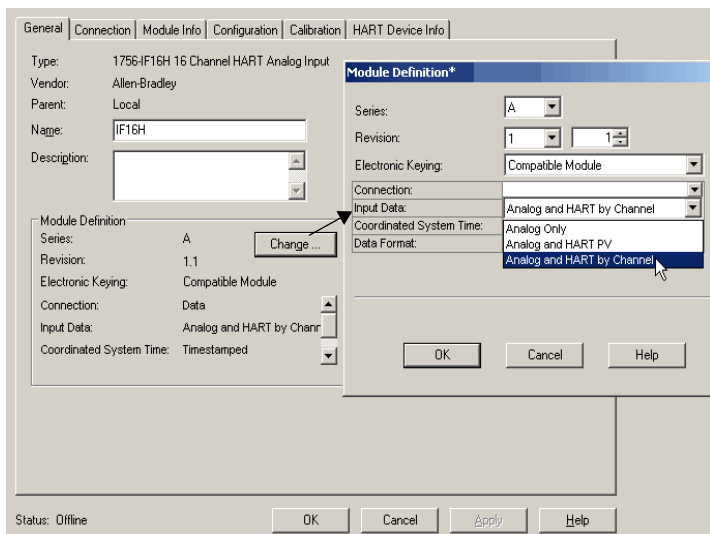
---

**IMPORTANT** The 1756-IF16H module firmware includes electronic data sheet (EDS) files. This allows RSLinx software to upload and register the EDS files directly from the module.

---

- Populate HART data in your Input Data tag by doing the following:
  - On the General tab, click Change in the Module Definition box.
  - From the Input Data pull-down menu, choose Analog with HART PV or Analog and HART by Channel.

For a description of these two Input Data types, see Chapter 5 in the ControlLogix® HART Analog I/O Modules User Manual, publication [1756-UM533](#).



To use asset management software, such as FactoryTalk® AssetCentre or Endress+Hauser FieldCare, refer to the ControlLogix HART Analog I/O Modules User Manual, publication [1756-UM533](#).

### Dynamic Variables

The module collects dynamic variable (PV, SV, TV, FV) data as described in [Table 1](#). The command used to collect dynamic variable data depends on the device's HART version and support for Command 50.

**Table 1 - Dynamic Variable Assignment**

<b>HART Version</b>	<b>HART Device Reports PV, SV, TV, FV Assignments in Command 50</b>	<b>HART Command Used by 1756 Module to Collect PV, SV, TV, FV</b>	<b>Device Variable Codes Used in Command 9 for PV, SV, TV, FV</b>
5	N/A	3	N/A
6	No	3	N/A
	Yes	9	As reported in Command 50
7 or later	No	9	246, 247, 248, 249
	Yes		As reported in Command 50

For additional information, see HART Dynamic Variables in the ControlLogix HART Analog I/O Modules User Manual, publication [1756-UM533](#).

---

## Additional Resources

These documents contain additional information concerning related products from Rockwell Automation.

Resource	Description
ControlLogix HART Analog I/O Modules User Manual, publication <a href="#">1756-UM533</a>	Publication describes how to configure and troubleshoot the 1756-IF16H analog I/O module.
1756 ControlLogix I/O Modules Specifications Technical Data, publication <a href="#">1756-TD002</a>	Publication provides specifications for the 1756-IF16H analog I/O module.

You can view or download publications at <http://www.rockwellautomation.com/literature>. To order paper copies of technical documentation, contact your local Allen-Bradley distributor or Rockwell Automation sales representative.

**Notes:**

## **Notes:**

# Rockwell Automation Support

Rockwell Automation provides technical information on the Web to assist you in using its products. At <http://www.rockwellautomation.com/support/>, you can find technical manuals, a knowledge base of FAQs, technical and application notes, sample code and links to software service packs, and a MySupport feature that you can customize to make the best use of these tools.

For an additional level of technical phone support for installation, configuration, and troubleshooting, we offer TechConnect support programs. For more information, contact your local distributor or Rockwell Automation representative, or visit <http://www.rockwellautomation.com/support/>.

## Installation Assistance

If you experience a problem within the first 24 hours of installation, please review the information that's contained in this manual. You can also contact a special Customer Support number for initial help in getting your product up and running.

United States or Canada	1.440.646.3434
Outside United States or Canada	Use the <a href="#">Worldwide Locator</a> at <a href="http://www.rockwellautomation.com/support/americas/phone_en.html">http://www.rockwellautomation.com/support/americas/phone_en.html</a> , or contact your local Rockwell Automation representative.

## New Product Satisfaction Return

Rockwell Automation tests all of its products to ensure that they are fully operational when shipped from the manufacturing facility. However, if your product is not functioning and needs to be returned, follow these procedures.

United States	Contact your distributor. You must provide a Customer Support case number (call the phone number above to obtain one) to your distributor to complete the return process.
Outside United States	Please contact your local Rockwell Automation representative for the return procedure.

## Documentation Feedback

Your comments will help us serve your documentation needs better. If you have any suggestions on how to improve this document, complete this form, publication [RA-DU002](#), available at <http://www.rockwellautomation.com/literature/>.

Allen-Bradley, Rockwell Software, Rockwell Automation, ControlLogix, RSLogix 5000, RSLinx, FactoryTalk Asset Centre, and TechConnect are trademarks of Rockwell Automation, Inc.

Trademarks not belonging to Rockwell Automation are property of their respective companies.

Rockwell Otomasyon Ticaret A.Ş., Kar Plaza İş Merkezi E Blok Kat:6 34752 İçerenköy, İstanbul, Tel: +90 (216) 5698400

[www.rockwellautomation.com](http://www.rockwellautomation.com)

### Power, Control and Information Solutions Headquarters

Americas: Rockwell Automation, 1201 South Second Street, Milwaukee, WI 53204-2496 USA, Tel: (1) 414.382.2000, Fax: (1) 414.382.4444  
Europe/Middle East/Africa: Rockwell Automation NV, Pegasus Park, De Kleetlaan 12a, 1831 Diegem, Belgium, Tel: (32) 2 663 0600, Fax: (32) 2 663 0640  
Asia Pacific: Rockwell Automation, Level 14, Core F, Cyberport 3, 100 Cyberport Road, Hong Kong, Tel: (852) 2887 4788, Fax: (852) 2508 1846

Publication 1756-RN690A-EN-P - July 2011

PN-118950

Copyright © 2011 Rockwell Automation, Inc. All rights reserved. Printed in the U.S.A.