

SLC 500 EtherNet/IP Adapter Firmware

Catalog Number 1747-AENTR

Topics	Page
About This Publication	1
Firmware Release History	1
Usage Requirements for Logix Designer Application	2
Additional Resources	5

About This Publication

These release notes for the 1747-AENTR SLC 500 EtherNet/IP Adapter with Firmware Revision 2.002 supplement the existing documentation supplied with your product.

Keep this document with your 1747-AENTR User Manual, publication number [1747-UM076](#).

IMPORTANT

For user of Logix Designer application, read [Usage Requirements for Logix Designer Application](#) before using this product.

Firmware Release History

The 1747-AENTR adapter has the following firmware revision history.

Release	Description
1.001	First major revision
2.001 ⁽¹⁾	Second major revision
2.002	Third revision

⁽¹⁾ Supported on Logix Designer application revision 21 and later.

Enhancements

Enhancements for Firmware Revision 2.002

Enhancement	Description
Change of RAM chip and RAM controller IOSR bit value	1747-AENTR RAM controller IOSR bit value changed for compatibility with new RAM chip. Firmware version V2.1 can be upgraded directly to version V2.2. Users with firmware version V1.1 are required to upgrade to version V2.1 prior to V2.2.

Usage Requirements for Logix Designer Application

For users of Logix Designer application, you need to download and install the latest Add-On Profile (AOP) for 1747-AENTR.

Download and Install the Add-On Profile

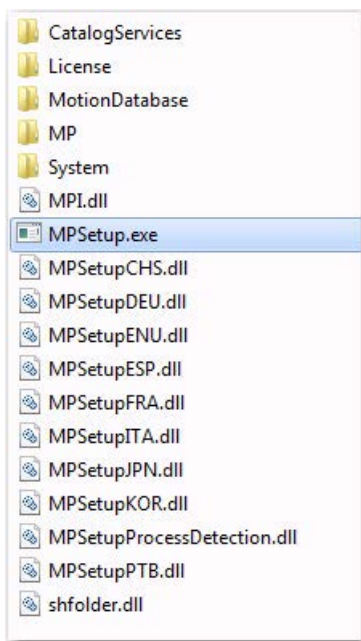
IMPORTANT Users of Logix Designer application revision 21 are required to download and install AOP 9.01 or later for the 1747-AENTR device. This AOP installation also automatically updates Electronic Data Sheets (EDS) files.

To update the add-on profile, perform the following steps:

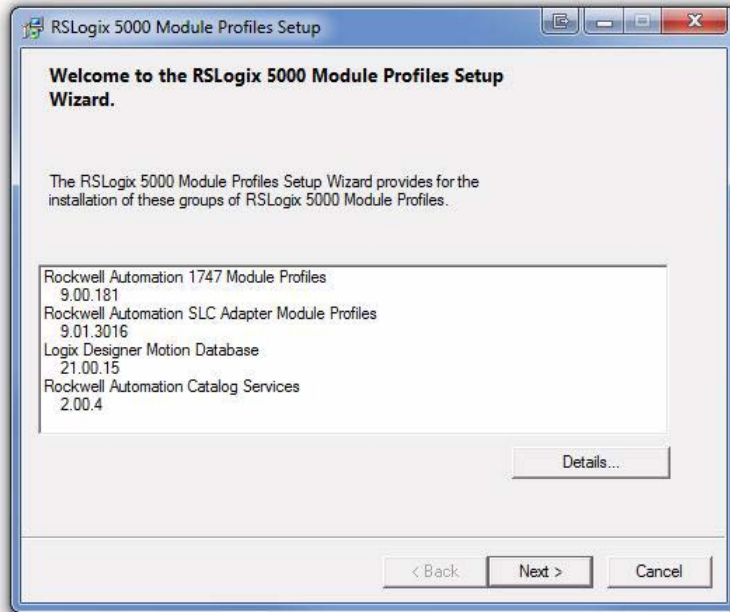
1. Download the latest AOP package for 1747-AENTR from the following Rockwell Automation download site:

<http://www.rockwellautomation.com/rockwellautomation/support/downloads.page>

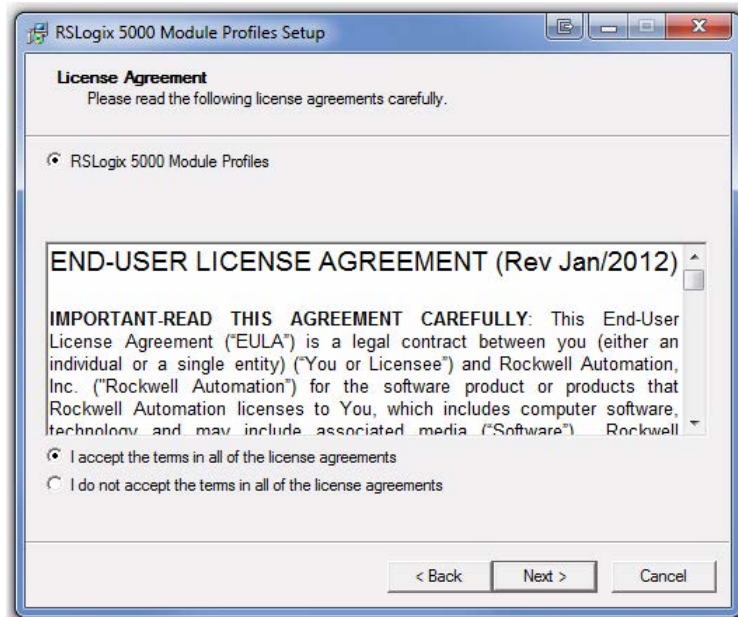
2. Save and unzip the package to a folder location.
3. Navigate to the MPSetup.exe file. Run the file to launch the AOP installer.



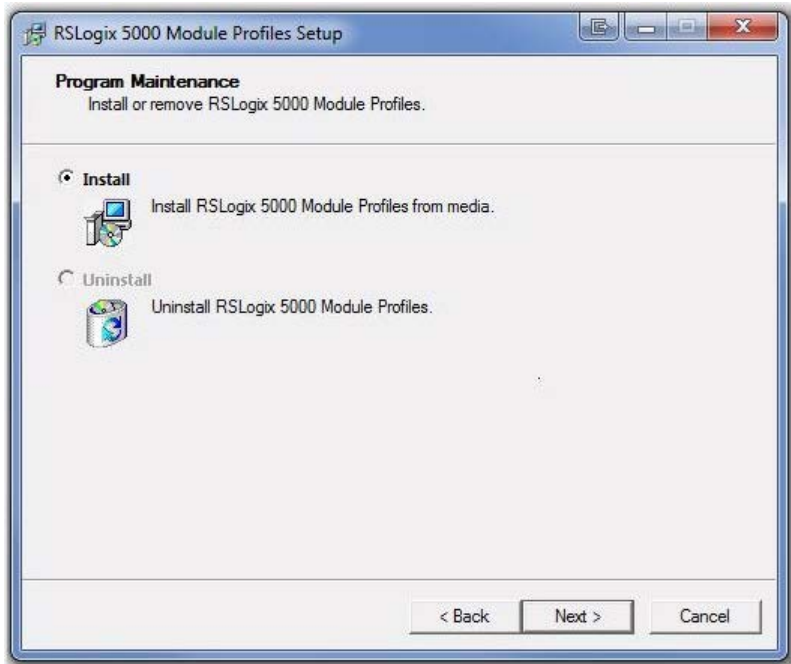
4. On the welcome screen that appears, click Next.



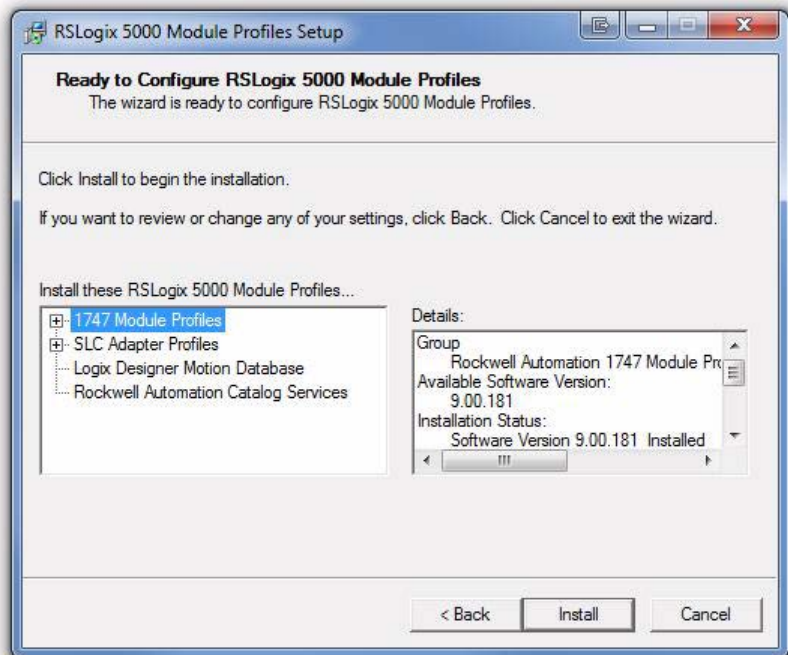
5. The End User License Agreement screen appears next. Read and tick "I accept the terms in all the license agreements". Click Next.



6. On the next screen that appears, tick the Install option button. Click Next.



7. On the next screen that appears, click Install.



8. Follow the instructions on succeeding screens to complete the installation. The installer will inform you once the installation successfully completes.

Launch the Logix Designer application to start configuring your 1747-AENTR device and your SLC 500 system.

To help you configure the 1747-AENTR device, see the User Manual for the SLC 500 EtherNet/IP Adapter, publication [1747-UM076](#).

Additional Resources

These documents contain additional information concerning related Rockwell Automation products.

Resource	Description
SLC 500 EtherNet/IP Adapter Installation Instructions, publication 1747-IN521	A more detailed description of how to install your SLC 500 EtherNet/IP Adapter.
SLC 500 EtherNet/IP Adapter User Manual, publication 1747-UM076	A more detailed description of the features and usage of your SLC 500 EtherNet/IP Adapter.
Industrial Automation Wiring and Grounding Guidelines, publication 1770-4.1	Provides general guidelines for installing a Rockwell Automation industrial system.
Product Certifications website, http://www.ab.com	Provides declarations of conformity, certificates, and other certification details.

You can view or download publications at <http://www.rockwellautomation.com/literature/>. To order paper copies of technical documentation, contact your local Rockwell Automation distributor or sales representative.

Notes:

Notes:

Rockwell Automation Support

Rockwell Automation provides technical information on the Web to assist you in using its products. At <http://support.rockwellautomation.com>, you can find technical manuals, a knowledge base of FAQs, technical and application notes, sample code and links to software service packs, and a MySupport feature that you can customize to make the best use of these tools.

For an additional level of technical phone support for installation, configuration, and troubleshooting, we offer TechConnect support programs. For more information, contact your local distributor or Rockwell Automation representative, or visit <http://support.rockwellautomation.com>.

Installation Assistance

If you experience a problem within the first 24 hours of installation, please review the information that's contained in this manual. You can also contact a special Customer Support number for initial help in getting your product up and running.

United States	1.440.646.3434 Monday – Friday, 8 a.m. – 5 p.m. EST
Outside United States	Please contact your local Rockwell Automation representative for any technical support issues.

New Product Satisfaction Return

Rockwell Automation tests all of its products to ensure that they are fully operational when shipped from the manufacturing facility. However, if your product is not functioning and needs to be returned, follow these procedures.

United States	Contact your distributor. You must provide a Customer Support case number (call the phone number above to obtain one) to your distributor in order to complete the return process.
Outside United States	Please contact your local Rockwell Automation representative for the return procedure.

Rockwell Automation, Allen-Bradley, SLC 500, RSLogix 5000, Logix Designer, RSLinx, and TechConnect are trademarks of Rockwell Automation, Inc.

Trademarks not belonging to Rockwell Automation are property of their respective companies.

Rockwell Otomasyon Ticaret A.Ş., Kar Plaza İş Merkezi E Blok Kat:6 34752 İçerenköy, İstanbul, Tel: +90 (216) 5698400

www.rockwellautomation.com

Power, Control and Information Solutions Headquarters

Americas: Rockwell Automation, 1201 South Second Street, Milwaukee, WI 53204-2496 USA, Tel: (1) 414.382.2000, Fax: (1) 414.382.4444

Europe/Middle East/Africa: Rockwell Automation, Vorstlaan/Boulevard du Souverain 36, 1170 Brussels, Belgium, Tel: (32) 2 663 0600, Fax: (32) 2 663 0640

Asia Pacific: Rockwell Automation, Level 14, Core F, Cyberport 3, 100 Cyberport Road, Hong Kong, Tel: (852) 2887 4788, Fax: (852) 2508 1846

Publication 1747-RN656D-EN-P - February 2014

Supersedes Publication 1747-RN656C-EN-P - April 2013

PN-236910

Copyright © 2014 Rockwell Automation, Inc. All rights reserved. Printed in the U.S.A.