

# QUICK START GUIDE

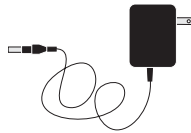
## ETHERNET DIAGNOSTIC MODULE

### KIT CONTENTS

9300-8EDM Unit



Power Supply



6 ft Ethernet Cable



9 - Port Protectors



# A

Apply power to the unit in one of two ways:

1. Use the power supply that comes with the unit

OR

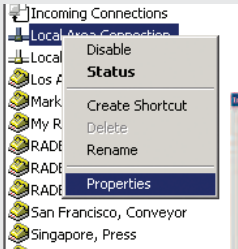
2. Connect 8-48VDC to the unit's power terminals

# B

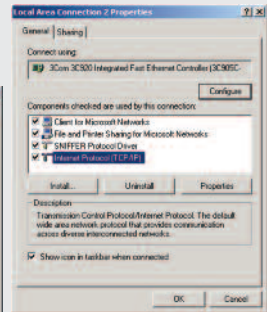
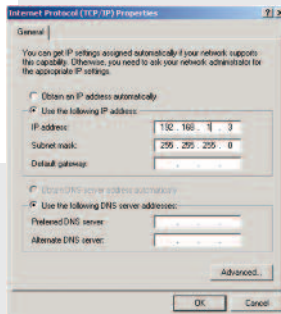
Connect to your computer's LAN card

**NOTE:** Patch cable or cross-over cable can be used.

1. Right click on LAN Connection



2. Highlight TCP/IP and click Properties



3. Change LAN/IP address to:  
192.168.1.3/  
255.255.255.0

LISTEN.  
THINK.  
SOLVE.

# C

## Connect to the 9300-8EDM via a Web browser

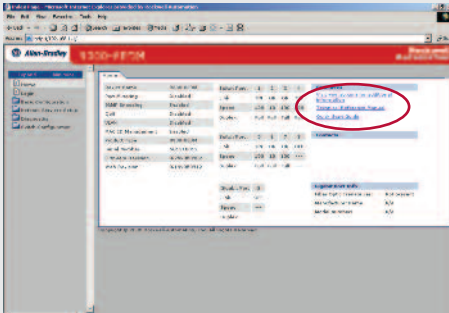
1. Open browser window
2. Enter the default IP address (192.168.1.1) of the 9300-8EDM in the address bar and click GO.
3. The Default Username is: **Blank**  
The Default Password is: **ZYPCOM**



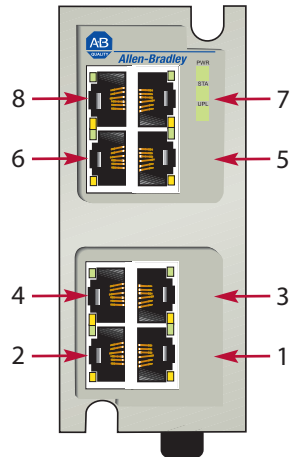
# D

## Configure the 9300-8EDM

1. Click on link to view embedded manual for complete configuration instructions.



## 8 Port Positions



For more information go to: [www.rockwellautomation.com](http://www.rockwellautomation.com)