

Single-direction (2-sensor, L-type) Muting with MSR42 Relay Connected Components Building Block



MSR42, MicroLogix 1100, GuardShield Micro400 Light Curtains
Quick Start



Important User Information

Solid state equipment has operational characteristics differing from those of electromechanical equipment. Safety Guidelines for the Application, Installation and Maintenance of Solid State Controls (publication [SGI-1.1](#) available from your local Rockwell Automation sales office or online at <http://www.rockwellautomation.com/literature/>) describes some important differences between solid state equipment and hard-wired electromechanical devices. Because of this difference, and also because of the wide variety of uses for solid state equipment, all persons responsible for applying this equipment must satisfy themselves that each intended application of this equipment is acceptable.

In no event will Rockwell Automation, Inc. be responsible or liable for indirect or consequential damages resulting from the use or application of this equipment.

The examples and diagrams in this manual are included solely for illustrative purposes. Because of the many variables and requirements associated with any particular installation, Rockwell Automation, Inc. cannot assume responsibility or liability for actual use based on the examples and diagrams.

No patent liability is assumed by Rockwell Automation, Inc. with respect to use of information, circuits, equipment, or software described in this manual.

Reproduction of the contents of this manual, in whole or in part, without written permission of Rockwell Automation, Inc., is prohibited.

Throughout this manual, when necessary, we use notes to make you aware of safety considerations.

WARNING



Identifies information about practices or circumstances that can cause an explosion in a hazardous environment, which may lead to personal injury or death, property damage, or economic loss.

IMPORTANT

Identifies information that is critical for successful application and understanding of the product.

ATTENTION



Identifies information about practices or circumstances that can lead to personal injury or death, property damage, or economic loss. Attentions help you identify a hazard, avoid a hazard, and recognize the consequence

SHOCK HAZARD



Labels may be on or inside the equipment, for example, a drive or motor, to alert people that dangerous voltage may be present.

BURN HAZARD



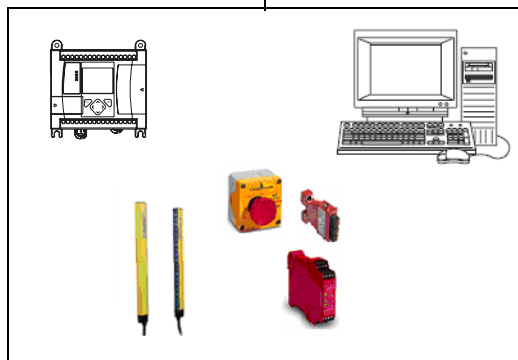
Labels may be on or inside the equipment, for example, a drive or motor, to alert people that surfaces may reach dangerous temperatures.

Connected Components Building Block Outline

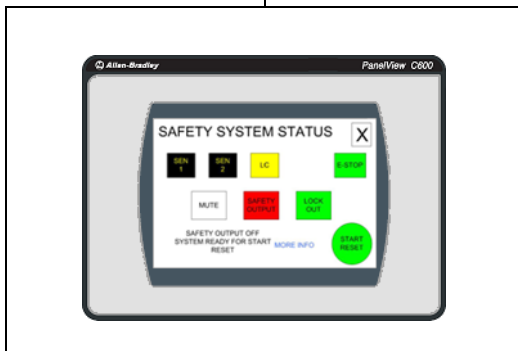
Follow the path below to complete your connected components building block.

Connected Components Building Blocks, publication [CC-QS001](#)

[Chapter 1 Product Integration](#)



[Chapter 2 System Validation and Application Tips](#)



Preface

About This Publication	7
Conventions	8
Additional Resources	8

Product Integration

Chapter 1

Introduction	9
Before You Begin	9
What You Need	9
Follow These Steps	10
Understand the Safety Function	10
Set Up the Configuration and Diagnostic Software	11
Configure the MSR42 Safety Relay	12
Download the Configuration	19
Confirm the Configuration	21

System Validation and Application Tips

Chapter 2

Introduction	23
Before You Begin	23
What You Need	23
Follow These Steps	24
Validate Proper Operation of the Safety Systems	24
Validate Proper Operation of the PanelView Screens	27

About This Publication

This quick start illustrates one way of combining a set of Micro400 Light Curtains, an MSR42 safety relay, an MSR45E expansion module, an MSR127 safety relay, an E-stop, and two contactors into an integrated safety system providing both a two-sensor, L-type muting function and an E-stop function.

A MicroLogix 1100 controller and a PanelView HMI are included to provide a convenient and graphical way to monitor the operation of the safety systems and provide basic diagnostic information and corrective action suggestions when appropriate. The MicroLogix controller and PanelView terminal only monitor the safety systems. They are not safety components and they have no safety control or function. The safety systems operate independently from the MicroLogix controller and PanelView terminal.

IMPORTANT

Use this Machine Safety Connected Components Building Block Quick Start in conjunction with the Connected Components Building Blocks Quick Start, publication [CC-QS001](#).

Refer to [Additional Resources](#) on [page 8](#) for a listing of quick starts.

To assist in the design and installation of your system, application files and other information are provided on the Connected Components Building Blocks Overview CD, publication CC-QR001. The CD provides bills of materials (BOM), CAD drawings for panel layout and wiring, control programs, Human Machine Interface (HMI) screens, and more. With these tools and the built-in best-practices design, the system designer is free to focus on the design of their machine control and not on design overhead tasks.

Read these sections carefully before beginning work in each chapter. The beginning of each chapter contains the following information:

- **Before You Begin** - This section lists the steps that must be completed and decisions that must be made before starting that chapter.
- **What You Need** - This section lists the tools that are required to complete the steps in the current chapter. This includes, but is not limited to, hardware and software.
- **Follow These Steps** - This illustrates the steps in the current chapter and identifies which steps are required to complete the examples.

Conventions

Convention	Meaning	Example
Check or uncheck	To activate or deactivate a checkbox.	Check Disable Keying.
Click	Click the left mouse button once while the cursor is positioned on object or selection to initiate an action.	Click Browse.
Double-click	Click the left mouse button twice in quick succession while the cursor is positioned on object or selection to initiate an action.	Double-click the application icon.
Expand	Click the + to the left of a given item /folder to show its contents.	Expand 1768 Bus under I/O Configuration.
Right-click	Click the right mouse button once while the cursor is positioned on object or selection.	Right-click the 1768 Bus icon.
Select	Using the mouse to highlight a specific option.	Select the New Module folder.
Press	Pressing a specific key on the keyboard or button on a touchscreen.	Press Enter.
>	Use this symbol to indicate the sub-menu name.	Choose File > Menu > Options.
'Project'	Refers to the application on both the controller side and the PanelView component side.	

Additional Resources

Resource	Description
Connected Components Building Blocks Quick Start, publication CC-QS001	Provides information on how to select products and gain access to panel and wiring information
Connected Components Building Blocks Overview CD, publication CC-QR001	Provides files for the Connected Components Building Blocks
Position Control Connected Components Building Block Quick Start, publication CC-QS003	Provides information installing and setting up the PowerFlex 40P drive parameters with the pre-configured RSLogix 500 program that controls you base system including application tips, as well as implementing the drive parameter backup and restore functionality
MicroLogix 1100 Controller User Manual, publication 1763-UM001	Provides information on using the MicroLogix 1100 Programmable Controller
MSR42 Safety Base Module Operating Manual, publication 440R-IN017	Provides information wiring and operating the MSR42 safety controller
MSR45E Safety Expander Module, Operation Manual, publication 440R-IN018	Provides information on using the MSR45E expander module
GuardShield Micro400 Safety Light Curtain Operation Manual, publication 445L-IN001	Provides information on mounting, wiring, and using safety light curtains
Configuration Tool for MSR42, GuardShield Micro400 and Safe 2/4 Light Curtains Software Description	Provides information on configuring and programming an MSR 42 safety controller with Configuration Tool software
http://www.ab.com	Provides access to the Allen-Bradley website
http://rockwellautomation.com/knowledgebase	Provides access to self-service support
http://rockwellautomation.com/components/connected/blocks.html	Provides access to the Connected Components website

Product Integration

Introduction

A two-sensor, L-type (single-direction) muting system lets valid loads or objects pass through its light curtains in one direction without shutting down the machine or process, but will stop the machine or process if anything or anyone attempts to move past the light curtain in the opposite direction. This type of system is often used to guard the output of a machine or process, such as the exit of an automatic palletizing system or an automatic assembly machine. This Connected Components Building Block is intended to ease the installation, configuration, and implementation of such a system.

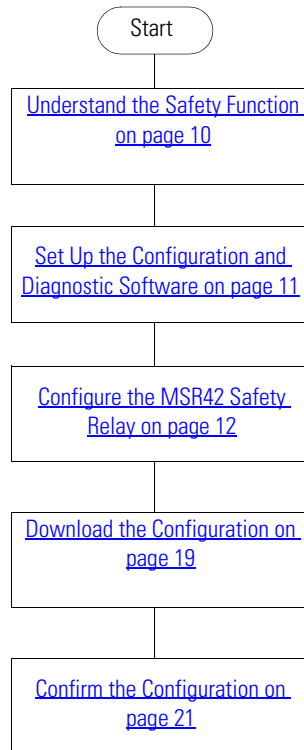
Before You Begin

Review the Connected Components Building Blocks Quick Start, publication [CC-QS001](#), verifying that you have completed the hardware design and installation as well as software installation.

What You Need

- Personal computer
- Connected Components Building Blocks Overview CD, publication CC-QR001
- MicroLogix 1100 controller, catalog number 1763-L16BBB
- PanelView Component C600 terminal, catalog number 2711C-T6C
- Stratix 2000 Ethernet switch, catalog number 1783-US05T (or equivalent) to connect the MicroLogix controller to the PanelView terminal
- Ethernet cables, catalog number 1585J-M8TBJM-2 or equivalent
- MSR127 safety relay, catalog number 440R-N231132
- MSR42 safety relay, catalog number 440R-P226AGS-NNR
- MSR45E expander module, catalog number 440R-P4NANS
- Optical Interface Tool, catalog number 445L-AF6150, which includes the Optical Interface Tool-MSR42 Configuration and Diagnostic Software
- Optical Interface Tool Fastener, to attach the Optical Interface securely to the MSR42 relay
- 24V DC power supply, catalog number 1606-XL120D
- Safety components such as E-stops, GuardShield Micro400 light curtains, as listed in the bill of material on the Connected Components Building Blocks Overview CD, publication CC-QR001

Follow These Steps



Understand the Safety Function

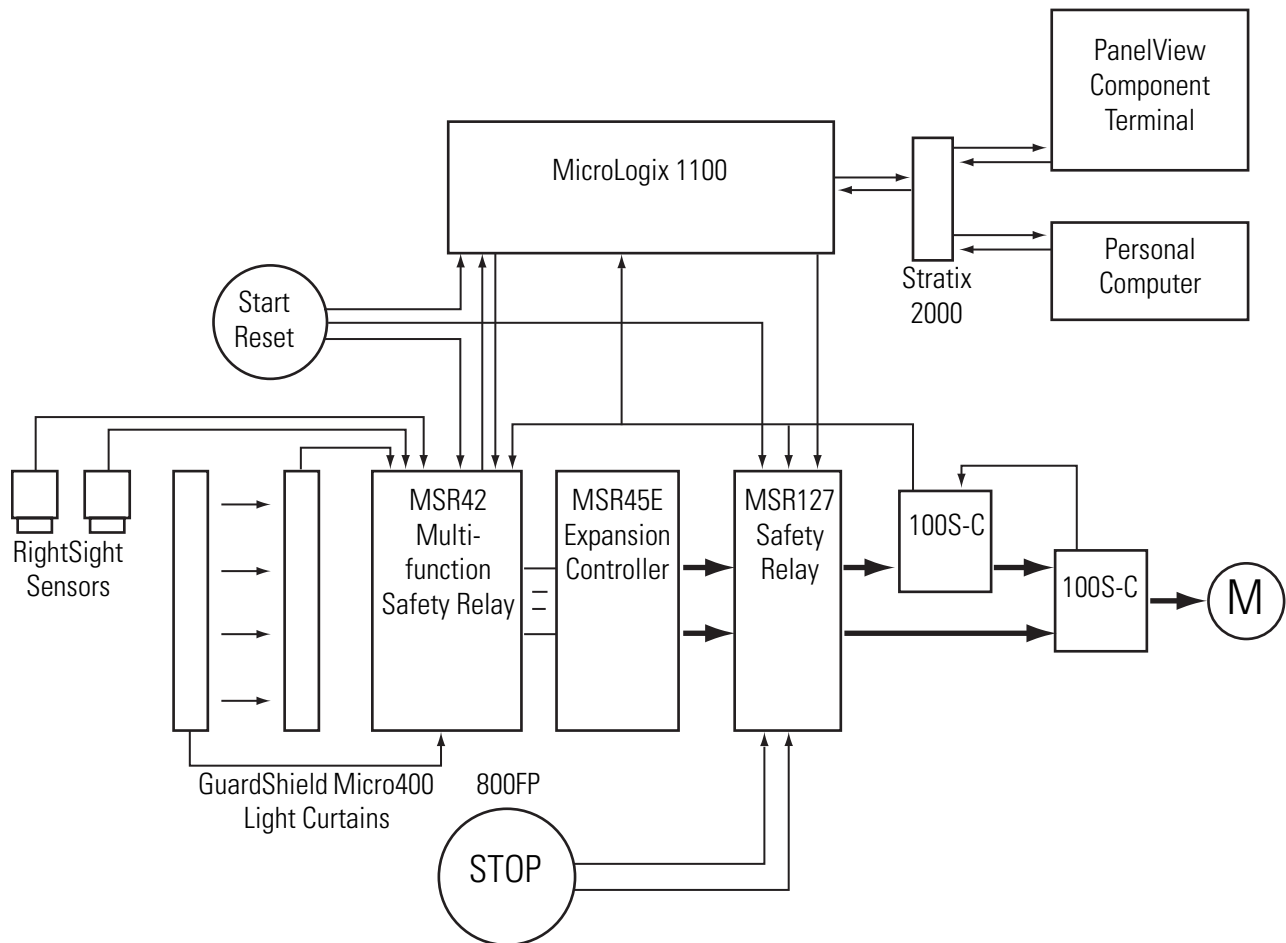
Two separate safety functions are provided.

1. The GuardShield Micro400 light curtains and MSR42 safety relay provide a two-sensor, L-type muting function.
2. The E-stop and MSR127 safety relay provide an E-stop function.

These two safety functions are independent of one another. When set up properly, either safety system is capable of stopping dangerous motion.

The MicroLogix 1100 controller monitors the safety systems and, via the PanelView terminal, provides a simple, graphical representation of the operation and status of the safety systems and recommends corrective actions in response to system faults. The controller and the terminal perform no safety or control functions.

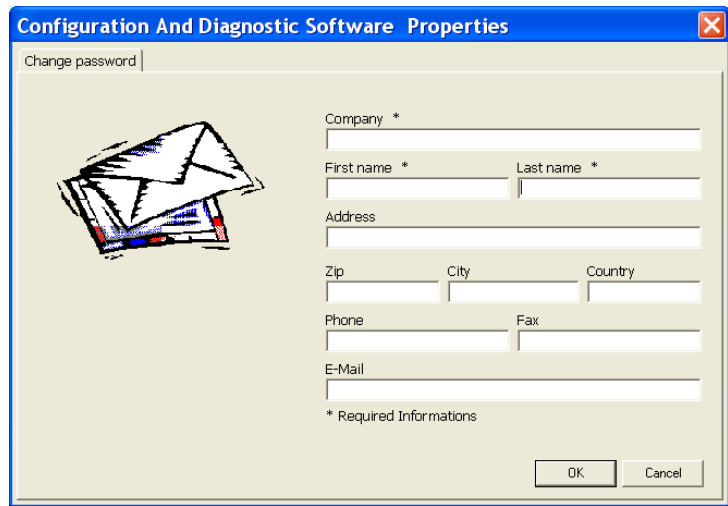
If the PanelView terminal is mounted so that it provides the operator a clear and complete view of the hazard area, and local safety regulations permit, the PanelView START RESET button may be used to start or reset the safety systems, just like the Start – Reset pushbutton.

Safety Systems Diagram**Set Up the Configuration and Diagnostic Software**

Follow these steps to install and set up the Configuration and Diagnostic software.

1. If you do not have the Configuration and Diagnostic software, go to <http://www.ab.com/safety/logic/relays/msr4x/> to download the Configuration Tool for MSR42 relay, GuardShield Micro400 and Safe2/4 Light Curtains.
 - a. Go to Related Links on the right side of the page and choose 'Safety Software [ZIP]'.
 - b. Save the zip file to your personal computer.
 - c. Unzip the file.
 - d. Run the SetupDiagnosticAndConfiguration_Vxxx.exe file to install the software.
2. Start the Configuration and Diagnostic software.

3. Click MSR42 and then OK.
4. If this is the first time you have used the Configuration and Diagnostic software, register the software.
 - a. From the Options menu, choose User Registration.
 - b. Type in your information and click OK.

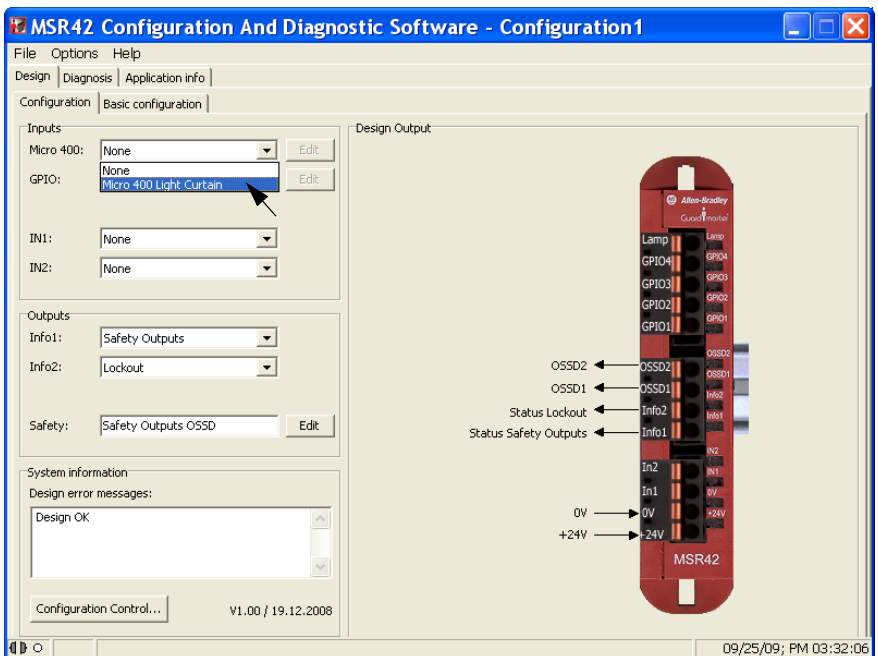


TIP

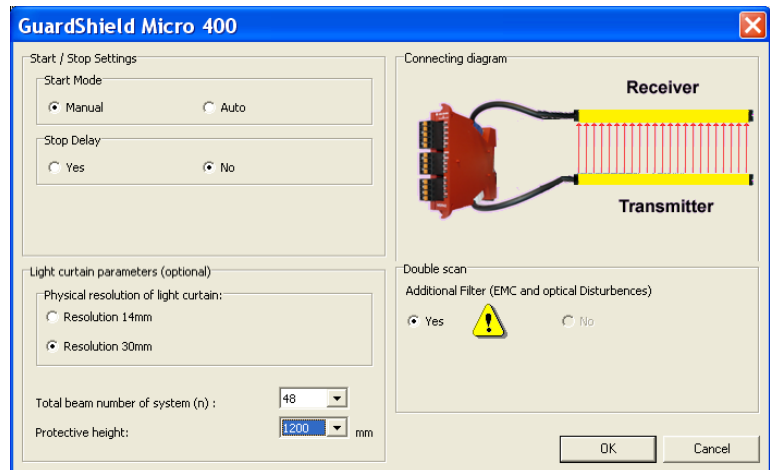
It is not necessary to change the password for this building block. The default password is ABGM.

Configure the MSR42 Safety Relay

1. On the Configuration dialog box, select 'Micro400 Light Curtain' from the Micro400 Inputs pull-down menu.

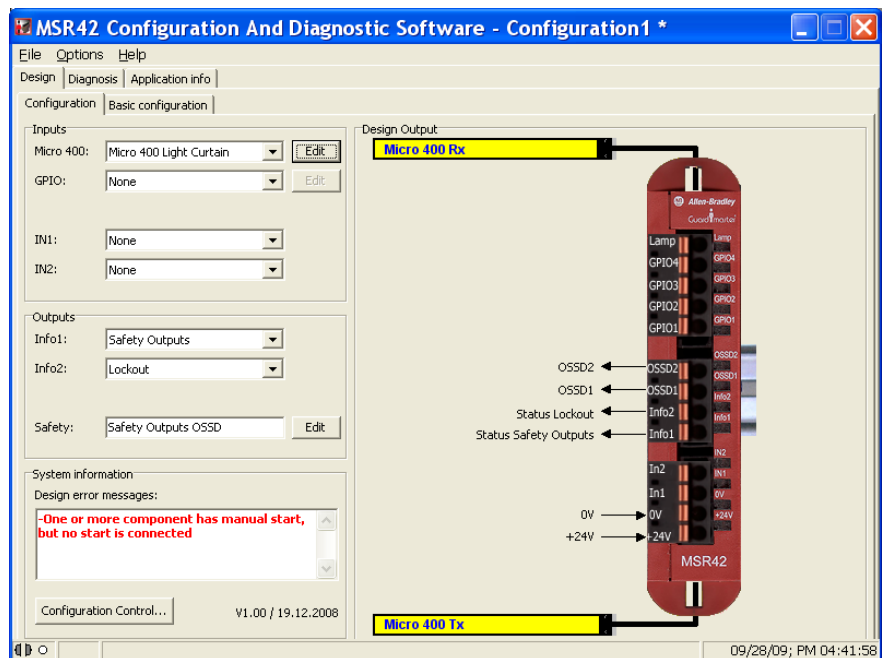


2. Edit the settings as shown.
 - a. Choose Manual.
 - b. Leave Stop Delay set to No.
 - c. Choose Resolution 30 mm.
 - d. From the Protective height pull-down menu, choose 1200 mm.
The software automatically displays 48 as the 'Total beam number of system (n)':.
 - e. Leave Double Scan set to Yes.



3. Click OK.

Notice that Micro400 Light Curtains have been added to the Design Output diagram.



- On the Configuration dialog box, select Start from the IN1 Inputs pull-down menu.

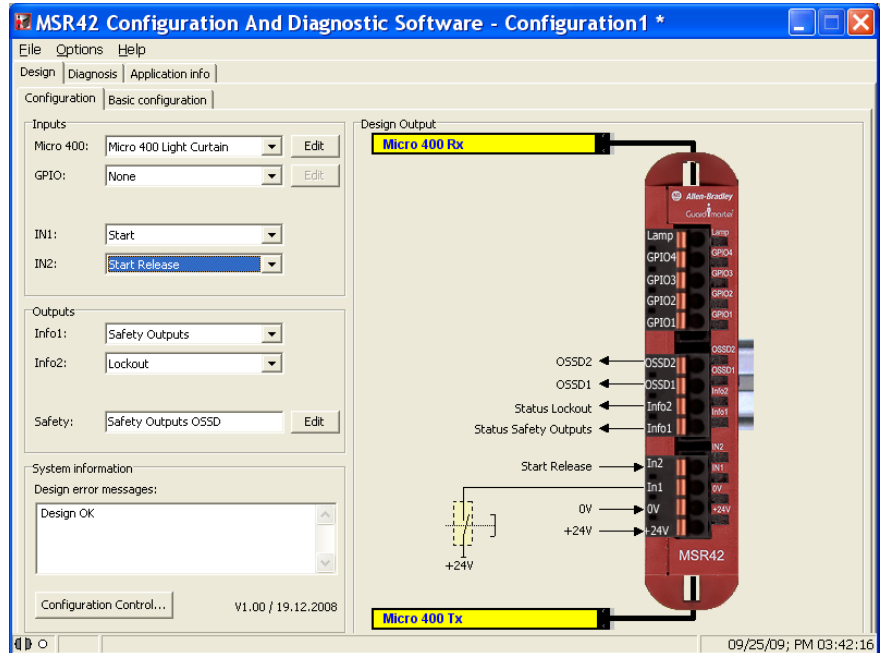
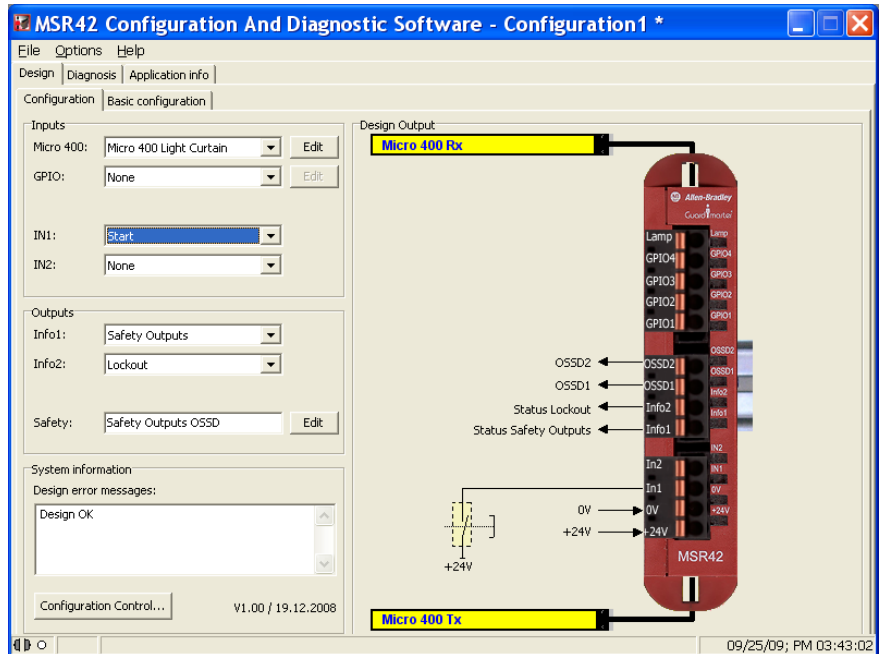
In addition to the Micro 400 Light Curtains, a NO momentary push button, connected to IN1, appears on the Design Output diagram. The red error message disappears, replaced by 'Design OK'.

- From the IN2 pull-down menu, choose Start Release.

Notice that Start Release is shown connected to IN2.

Start Release is a feedback circuit that confirms, at Start – Reset, that neither of the two final switching devices (FSD) normally-open (NO) outputs are shorted, that is, closed.

In this application, the Start Release circuit goes from +24V through one auxiliary normally-closed (NC) contact of each 100S contactor to the MSR42 relay. Similar to EDM, if either or both of these NC contacts are open, the MSR42 relay cannot be started or reset.

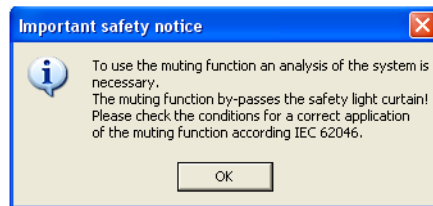


- From the Outputs Info1 pull-down menu, choose Micro400 Light Curtain.

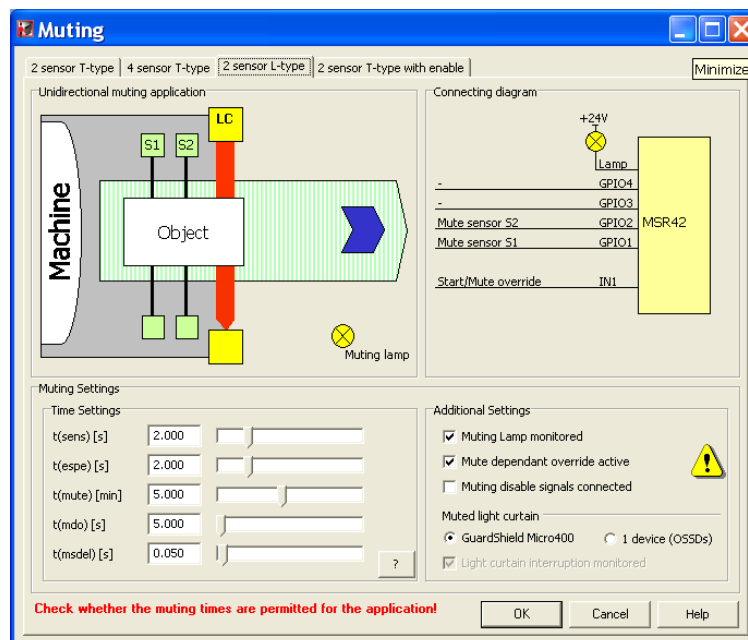
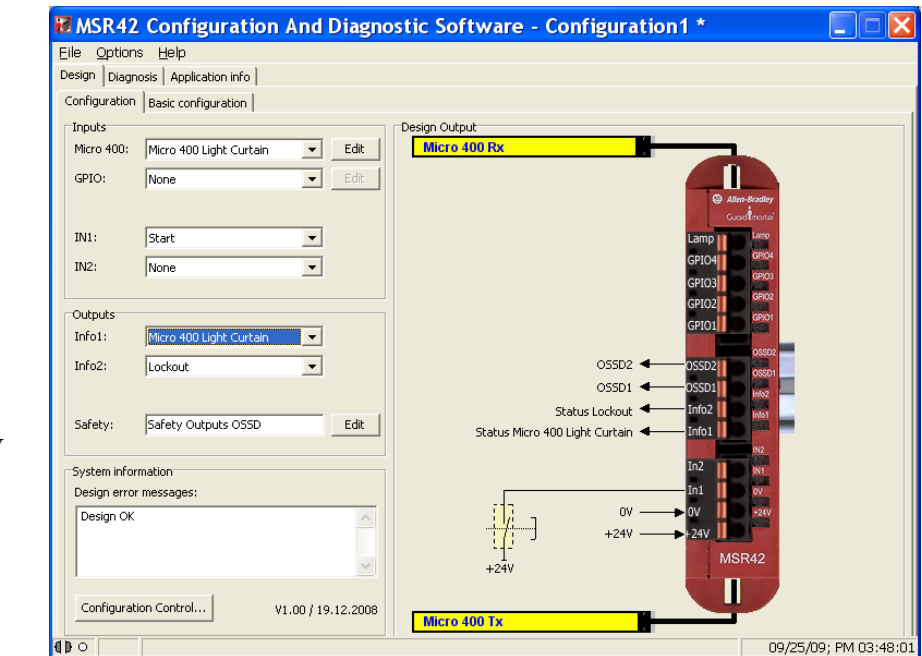
Status Micro400 Light Curtain is shown connected to Info1. This output switches High or Low, depending on whether the light curtain beam is broken or complete. This is independent of the safety output and can be considered an auxiliary output.

- From the Inputs GPIO pull-down menu, choose Muting Micro400.

- Click OK on the safety notice dialog box.



- On the Muting dialog box, click 2 sensor L-type.



This dialog box helps you configure your muting system properly.

The Muting dialog box shows that a load on the conveyor travels left-to-right, passing in sequence through the S1 and S2 muting sensors and the LC (light curtain). An object passing the sensors in the proper sequence and within the configured time constraints is permitted to pass through the light curtains without triggering a safe stop. The light curtains are ignored by the safety system until the object passes completely through, clearing the light curtain sensing field and ending the muting period.

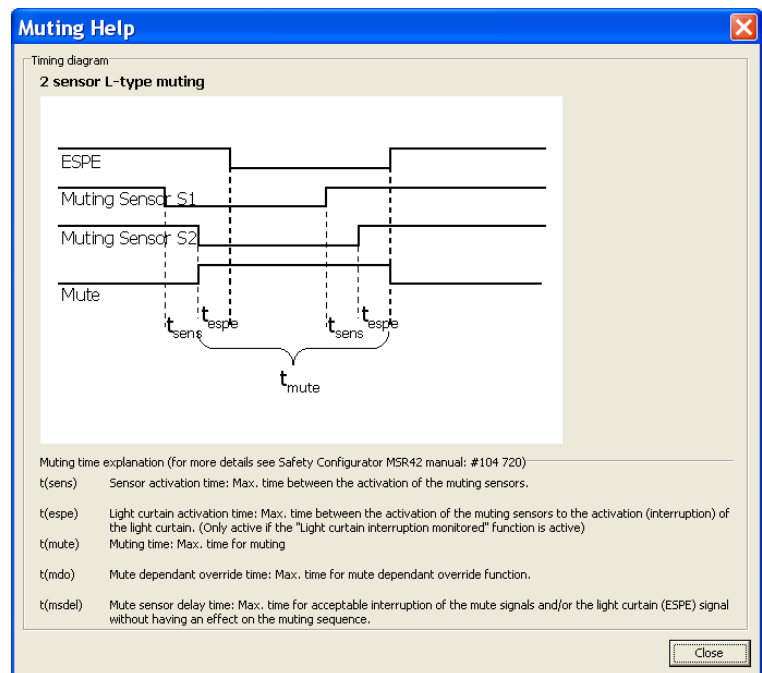
As soon as the light curtain sensing field is cleared, the safety system will again trigger a safe stop if anything breaks the sensing field without first passing S1 and S2 in the proper order and within the configured time constraints.

10. Click Help in the lower right corner of the Muting dialog box.

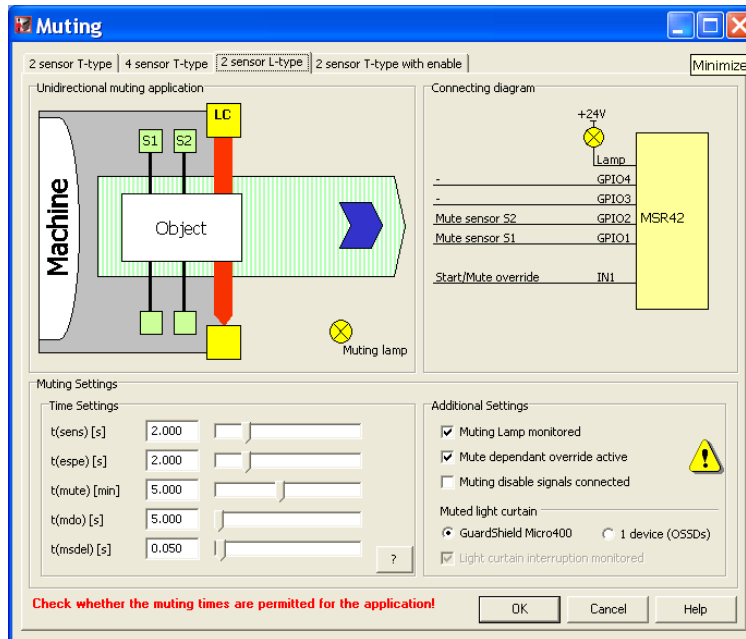
The Muting Help dialog box shows the proper timing sequence for 2 sensor, L-type muting. An object must not only pass the sensors and the light curtain in the proper sequence, but the object must also be in front of both S1 and S2 for at least an instant. Take this timing and the size of the load into consideration when mounting the sensors.

The Muting Help dialog box also provides definitions for the $t(\text{sens})$, $t(\text{espe})$, $t(\text{mute})$, $t(\text{mdo})$, and $t(\text{msdel})$ times, which you can configure on the 2 sensor L-type dialog box. A load that exceeds any of these configured times as it moves across the conveyor causes a muting error, which results in the light curtain not being muted. A load entering the light curtain sensing field during a muting error triggers a safe stop.

11. Click Close to return to the Muting dialog box.



12. Type the timing values or use the slider to edit the default values.



You may want to add a few seconds to some of your calculations to allow for variations.

Time Setting	Description
t(sens)	Since both S1 and S2 sensors must be broken simultaneously to initiate a muting sequence, these sensors should be spaced no further apart than the length of the smallest typical load. Calculate how long a load takes from the time it first reaches S1 until it reaches S2, based on the speed of the conveyor. This is the t(sens) time for your system.
t(espe)	The t(espe) of your system is the time from the moment a load reaches S2 until it enters the light curtain sensing field. Once the light curtain is muted, the load must interrupt the light curtain within 3 seconds. Therefore, sensor 2 must be placed within 3 seconds travel time from the light curtain. t(espe) should be no longer than 3 seconds except in extraordinary circumstances supported by the risk assessment.
t(mute)	This setting establishes the maximum length of time the light curtain remains muted. Calculate the length of time it takes the load to travel from the point where it first reaches the S2 until the trailing edge of the load leaves the light curtain based on the speed of the conveyor. This is the minimum t(mute) for your system, which is entered in minutes.
t(mdo)	This setting establishes the maximum length of a Mute Dependent Override. Occasionally, a load may stop within the light curtain sensing field. It may be difficult to move the load past the light curtain sensing field with a safe stop in effect. Mute Dependent Override is a function that lets a safety stop be paused and muting to be re-initiated for the duration of the t(mdo) setting, which lets the load move beyond the light curtain sensing field. As soon as the load moves past the light curtain sensing field, muting ceases. If the hazardous area is in clear view of the operator and no personnel or objects are in the hazard area, Mute Dependent Override can be initiated, in this case, by pressing and releasing the Start/Reset button. Calculate the time it takes the load to travel from the point where it first reaches the S2, until the trailing edge of the load leaves the light curtain sensing field, based on the speed of the conveyor.
t(msdel)	In some instances, loads may have gaps that the S1 and S2 sensors might sense through as the load passes. This could lead to a muting error. One method to avoid such errors is to delay the sensors' response to allow for seeing through gaps. The t(msdel) configures that delay time. Unless the gap is very long or the load is moving very slowly, the gap is present for only a short time. In most instances, the default 0.050 is suitable. Leave this value set at 0.050.

Notice that the Connecting diagram shows a lamp, as well as muting sensors connected to GPIO1 and GPIO2, and that IN1 is labeled Start/Mute override. In this application a Muting Lamp is required for safety purposes to warn personnel in the area when the light curtain is muted.

13. Review the Additional Settings.

- a. Make sure that the Muting Lamp monitored box is checked.

Muting lamp monitoring means that should the muting lamp fail, short, or open, the MSR42 controller will sense it and not initiate or maintain muting. In applications where a muting lamp is required, generally the muting lamp is required to be monitored.

- b. Because you entered a t(mdo) time earlier, leave the Mute dependent override box checked.

- c. Leave the Muting disable signals box unchecked.

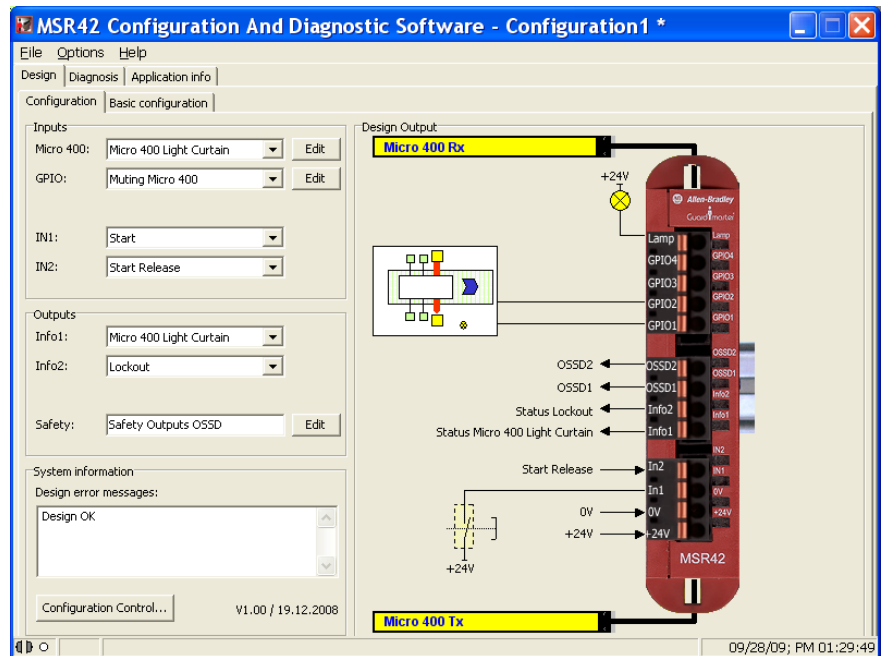
This application does not call for muting disable signals.

- d. In the Muted light curtain section, make sure that GuardShield Micro400 is selected.

14. Click OK to complete the configuration.

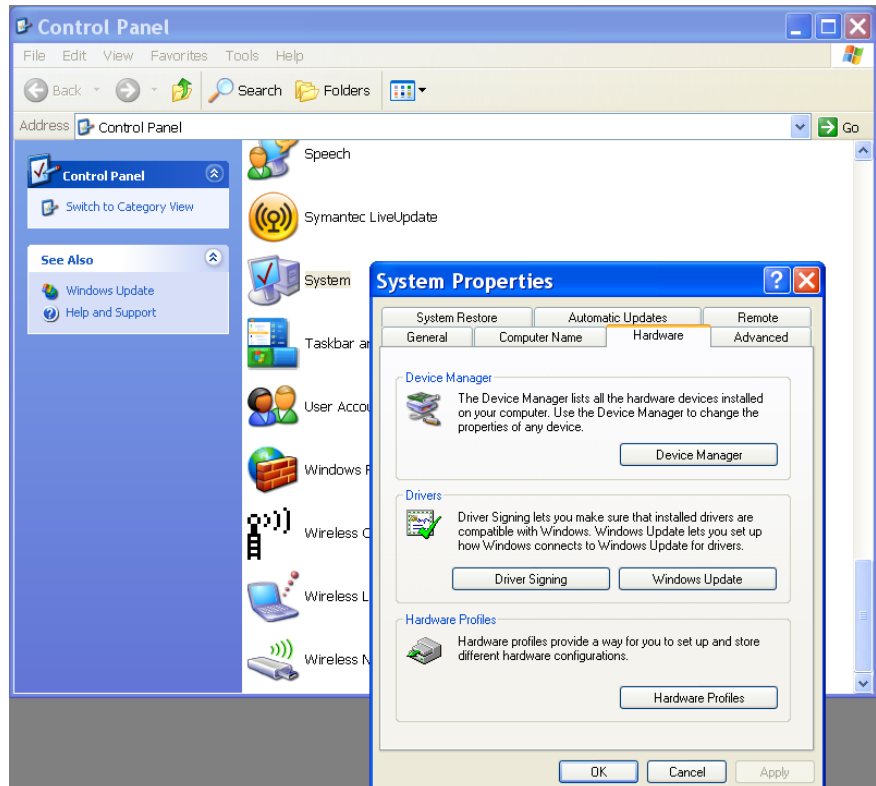
15. Choose File>Save and save the configuration as '2sensor L-type muting'.

16. Do not exit the MSR42 configuration and diagnostic software.



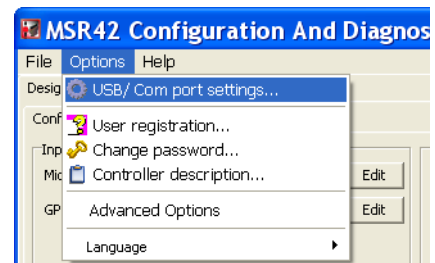
Download the Configuration

1. Write down the device number from the label on the side of the MSR42 relay.
2. Apply power to the MSR42 relay.
3. Attach the suction cup connector to the interface window on the side of the MSR42 relay.
4. In Microsoft Windows, open the Control Panel.
5. Double-click on System.
6. On the System Properties dialog box, click Hardware.
7. Click Device Manager.
8. Expand Ports (COM & LPT).
9. Plug the USB connector of the Optical Interface into an available USB port on your personal computer.
10. Note the new COM port that appears in the list.

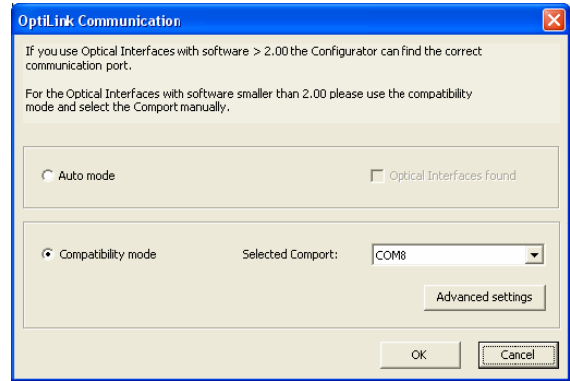


This is the port assigned to the Optical Interface, which you will need to select in the Configuration and Diagnostic software as part of the download procedure.

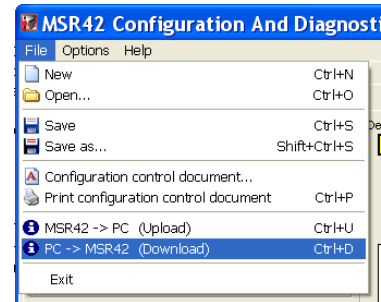
11. Close the Control Panel.
12. In the Configuration and Diagnostic software, choose Options>USB/comport settings.



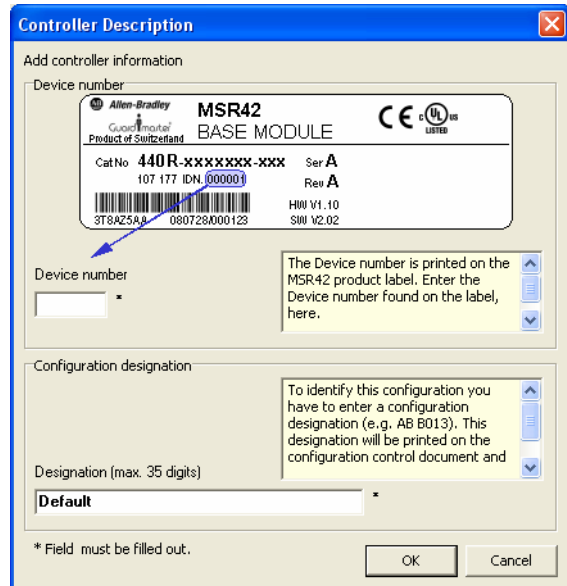
13. On the OptiLink Communication dialog box, select Compatibility mode.
14. Choose the Comport assigned by Windows Device Manager.
15. Click OK.



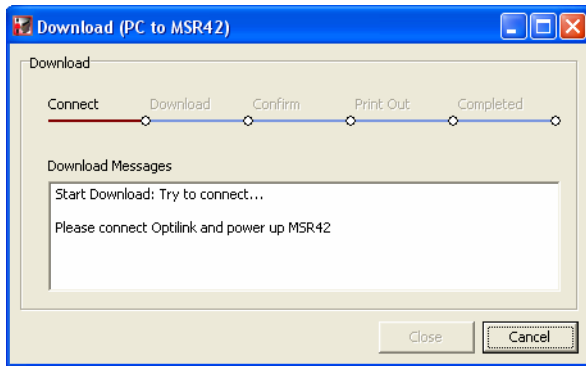
16. From the File menu, choose PC->MSR42 (Download).
17. When prompted, type the password 'ABGM'.



18. On the Controller Description dialog box, type the six-digit Device number and click OK.



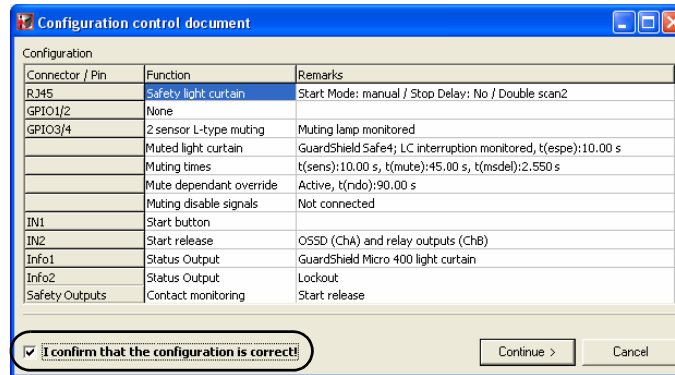
19. Cycle power to the MSR42 relay to allow the download to proceed.



Once the download is complete, the Configuration control document dialog box appears.

Confirm the Configuration

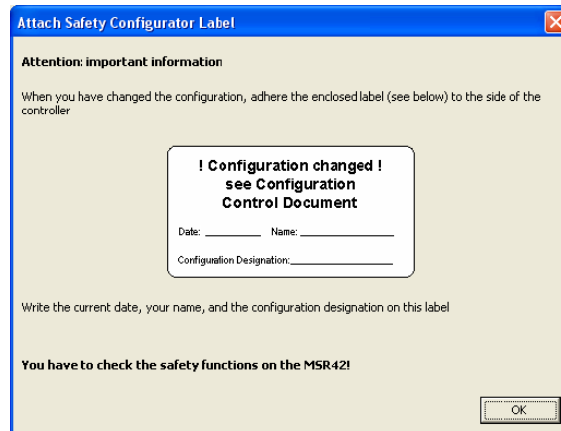
1. On the Configuration control document dialog box, review the configuration and check the confirmation box.



2. Click Continue.
3. When prompted to print the document, click No.

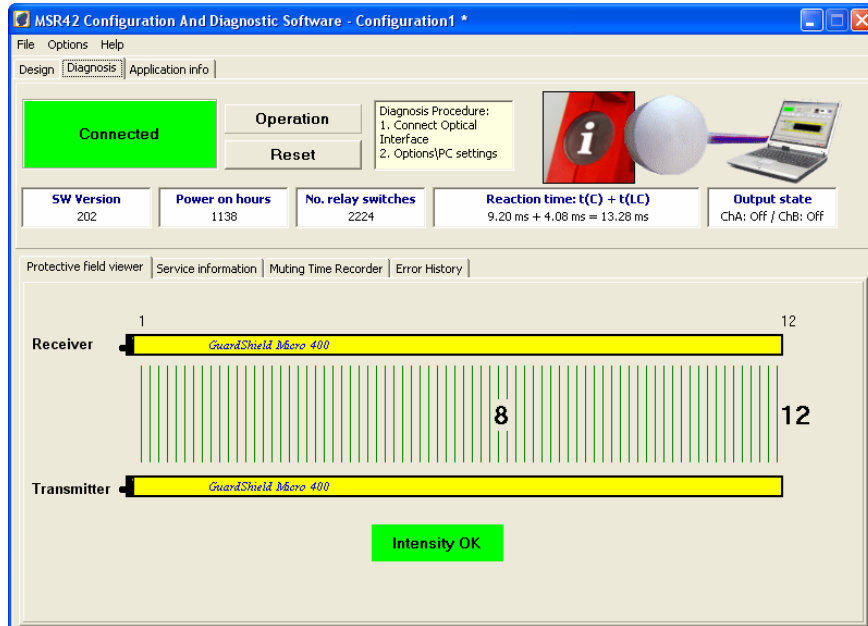
The software saves a copy that can be printed later from the File menu.

4. On the Attach Safety Configurator Label dialog box, click OK.



The MSR42 is now fully configured and ready for operation.

5. Click the Diagnosis tab.



This screen lets you monitor the status of the light curtain when a computer is attached to the MSR42 relay via the Optical Interface. It has other helpful diagnostic features which are described in the MSR42 Safety Base Module Operation Manual, publication [440R-IN017](#), and the Configuration Tool for MSR42, GS Micro400 and Safe 2/4 Light Curtains Software Description document, available on the CD that ships with the Optical Interface tool.

Otherwise a personal computer is neither required, nor recommended, for normal system operation.

6. Disconnect the Optical Interface tool.

System Validation and Application Tips

Introduction

In this chapter, you validate the operation of the two safety functions as well as the operation of the MicroLogix 1100 controller and PanelView Component 600 terminal.

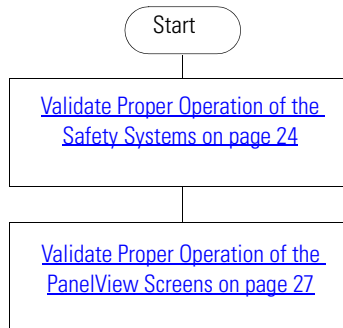
Before You Begin

- Review the Connected Components Building Blocks Quick Start, publication [CC-QS001](#), verifying that you have completed all of the steps in Chapter 3 of that publication.
- Verify that you have completed all of the steps in [Chapter 1](#) of this document.
- Verify that all components of the system are assembled and wired per the Bill of Materials Assembly Diagrams and Wiring Diagrams provided for this Connected Components Building Block, and as required for your application.
- Verify that the MicroLogix controller and the PanelView Component terminal have power applied to them.

What You Need

- Personal computer
- Connected Components Building Blocks Overview CD, publication CC-QR001
- MicroLogix 1100 controller, catalog number 1763-L16BBB
- PanelView Component C600 terminal, catalog number 2711C-T6C
- Stratix 2000 Ethernet switch, catalog number 1783-US05T (or equivalent) to connect the MicroLogix controller to the PanelView terminal
- Ethernet cables, catalog number 1585J-M8TBJM-2 or equivalent

Follow These Steps



Validate Proper Operation of the Safety Systems

To confirm that the system is operating properly, you need to perform a series of tests.

Start Up

1. Apply power to the system.
2. Check the following:
 - The 100S contactors do not energize.
 - Guarded motion does not start.
 - The red stacklight is on.
3. Press and release the Start-Reset button.
4. Check the following:
 - The 100S contactors energize.
 - Guarded motions starts.
 - The green stacklight is on.

E-stop Function

1. Press the E-stop.
2. Check the following:
 - The two 100S contactors de-energize.
 - Guarded motion stops.
 - The red stacklight is on.

3. Press and release the Start-Reset button.
4. Confirm that the two 100S contactors do not energize and guarded motion does not start.
5. Twist and release the E-stop button.
6. Press and release the Start-Reset button.
7. Check the following:
 - The 100S contactors energize.
 - Guarded motion starts.
 - The green stacklight is on.

Light Curtain Function

1. Break the light curtain beam and keep it broken, taking care not to block S1 or S2.
2. Check the following:
 - The two 100S contactors de-energize.
 - Guarded motion stops.
 - The red stacklight is on.
3. While the light curtain beam remains broken, press the Start-Reset button.
4. Confirm that the two 100S contactors do not energize and guarded motion does not start.
5. Restore the light curtain beam.
6. Press and release the Start-Reset button.
7. Check the following:
 - The 100S contactors energize.
 - Guarded motion starts.
 - The green stacklight is on.

Muting Function

1. Send a load through the muting system.
2. Check the following:
 - S1 switches as the load passes.
 - S2 switches as the load passes.
 - The muting lamp turns on.
 - The load passes through the light curtain without the system shutting off.
 - The muting lamp turns off as the load leaves the light curtain sensing field.

Muting Error

1. Let a load pass S1 and S2, but stop it short of the light curtain sensing field.
2. Confirm that the muting lamp turns on.
3. Wait the configured t(espe) delay for the muting lamp to start blinking.
4. Move the load forward to break the light curtain beam.
5. Check the following:
 - The system shuts down.
 - Guarded motion stops.
 - The red stacklight turns on.

Mute Dependent Override






1. While the load is still disrupting the light curtain beam from the previous mute error test, press and release the Start-Reset button.
2. Check the following:
 - Guarded motion starts.
 - The muting lamp is on and is not blinking.
 - The green stacklight turns on.
3. As soon as the load clears the light curtain, break the light curtain beam, taking care not to block S1 or S2.

4. Check the following:
 - The system shuts down.
 - Guarded motion stops.
 - The red stacklight turns on.
5. Press and release the Start-Stop button to start the system.

This completes the validation of the safety systems.

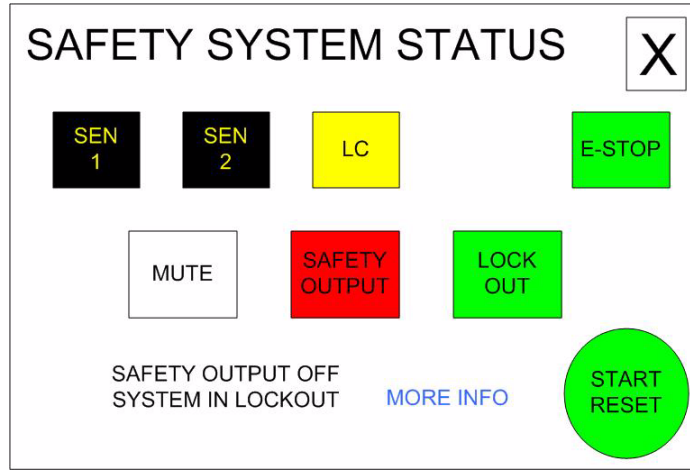
Validate Proper Operation of the PanelView Screens

Most of the buttons are real time signals from the MSR42 or MSR127 relays, driven via the MicroLogix 1100 controller to the PanelView terminal. The buttons change their appearance as the signals driving them change.

This button	Indicates
	There is no load in front of the sensor.
	A load is in front of the sensor.
	The light curtain sensing field is not interrupted.
	The light curtain sensing field is interrupted.
	The E-stop has been pressed.

The following pages illustrate a typical sequence of PanelView screens. Confirm that the system and PanelView screens operate as expected by following this sequence.

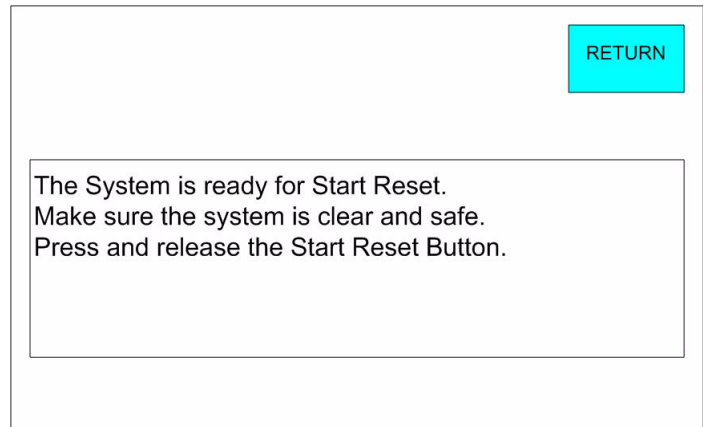
When you apply power to the system, the Safety System Status screen appears.



1. Press MORE INFO for two seconds.

Whenever an action may be appropriate for an operator to perform, MORE INFO is displayed on the screen. Pressing MORE INFO calls the related message screen.

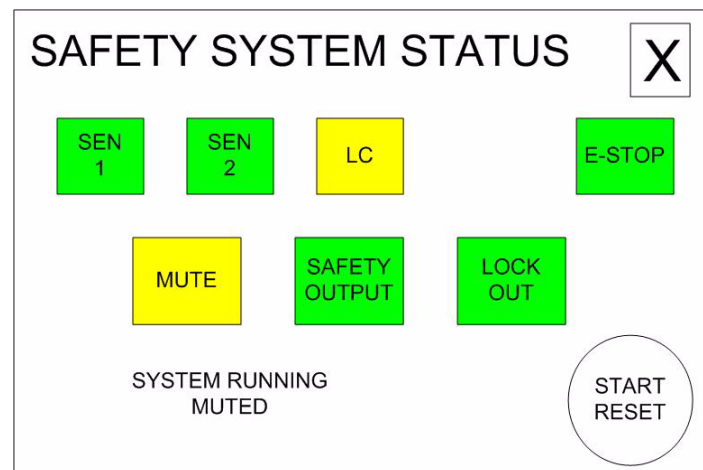
2. Press RETURN for about five seconds to return to the previous screen.



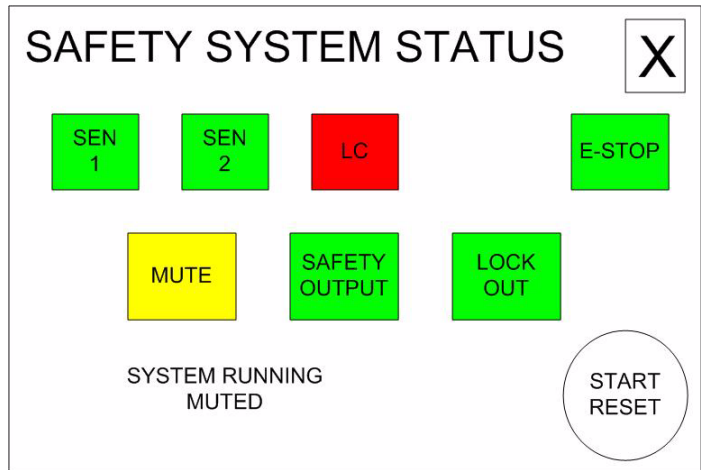
3. Press START RESET for three seconds and release.

The system should start running. Note that the START RESET button is green only when the system is ready for a Start Reset.

As the load moves in front of S1 and S2, muting is initiated. The load has not yet interrupted the light curtain sensing field.

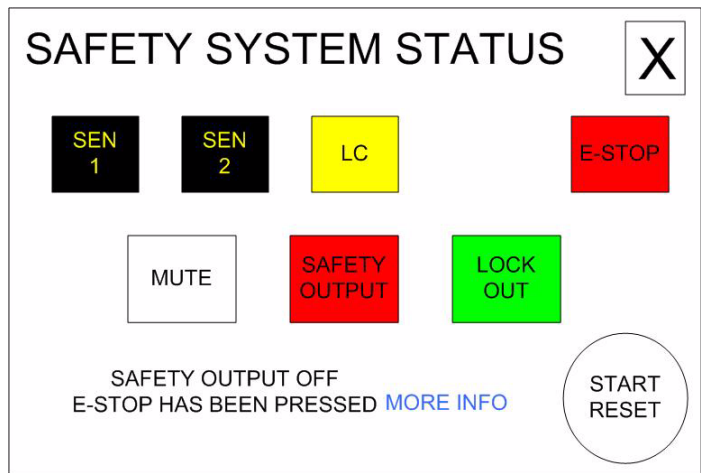


As the load enters the light curtain sensing field, the LC button turns red to indicate that the light curtain has been interrupted. The Safety Output button remains on.



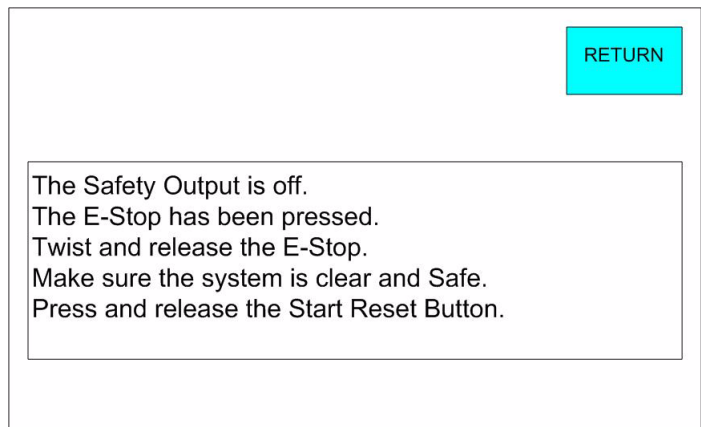
As the load leaves the light curtain sensing field, the screen returns to its original power-up view.

4. Press the E-stop.
The screen updates in response.

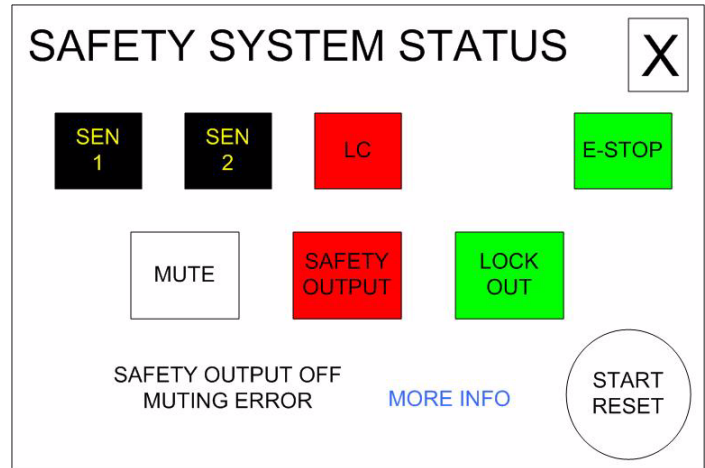


5. Press MORE INFO.
6. Press RETURN.
7. Twist and release the E-stop.
8. Press START RESET for three seconds and release.

The system starts to run and guarded motion begins.



9. Interrupt the light curtain from the exit side.



10. Press MORE INFO.

11. Press RETURN.

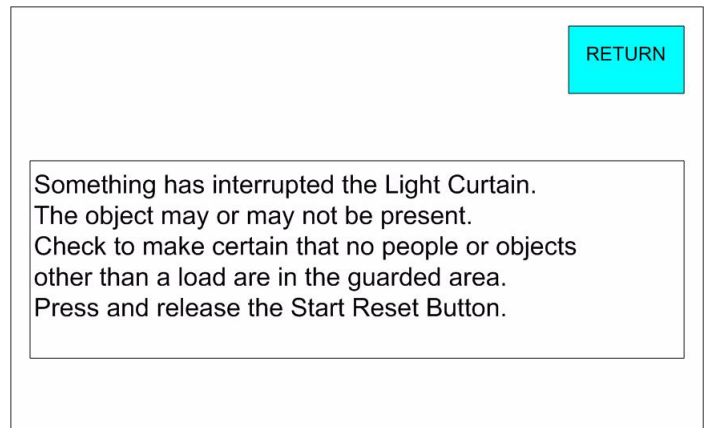
12. If the object is still interrupting the light curtain sensing field, remove it.

13. Press START RESET for three seconds and release.

14. Move a load in front of S1 and S2, but do not interrupt the light curtain.

15. Leave the load where it is.

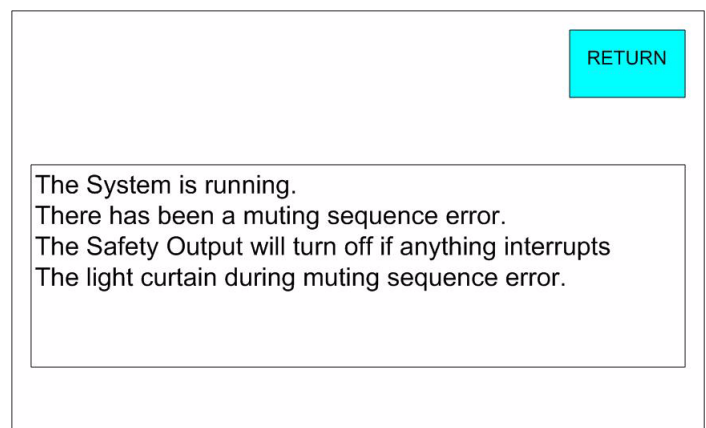
After the configured t(espe), the time it should take a load to travel between S2 and the light curtain, the muting lamp begins to blink. The screen reflects the muting error.



16. Press MORE INFO.

17. Press RETURN.

18. Move the load until it interrupts the light curtain.



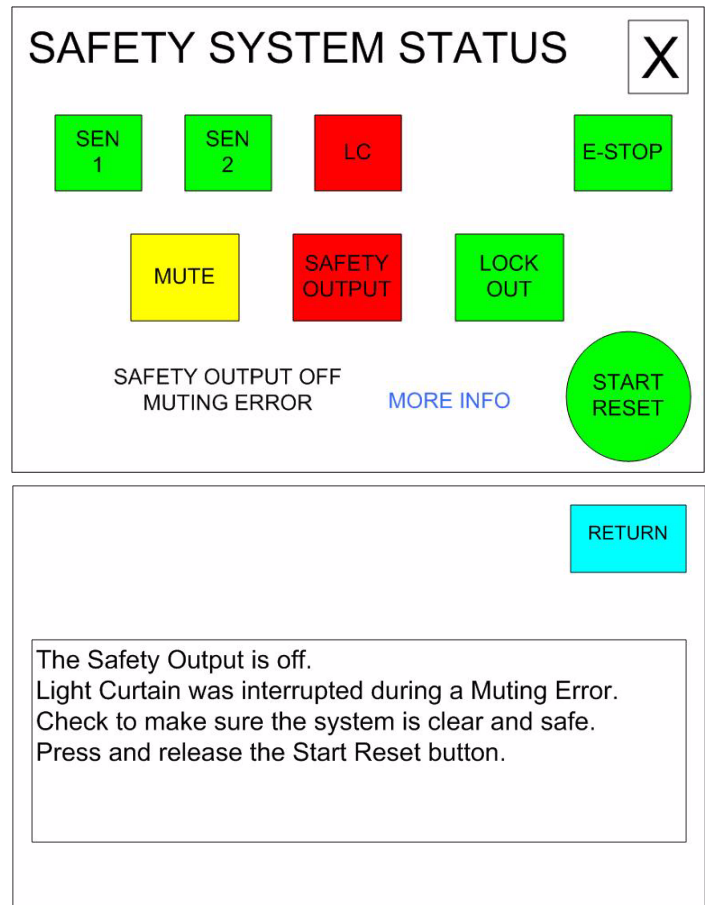
19. Leave the load in the light curtain sensing field.

20. Press MORE INFO.

21. Press RETURN.

22. Press START RESET for three seconds and release.

The load is still interrupting the light curtain. Pressing and releasing START RESET initiated a Mute Dependent Override, $t(mdo)$. The system switches to muted operation. Muting ends as soon as the load clears the light curtain or when the configured $t(mdo)$ expires.



TIP

When the START RESET button is green, it may be used in place of the Start Reset pushbutton. If requirements dictate that remote reset must not be used, do not use it. If the operator stationed at the PanelView terminal's location cannot see the guarded area well enough to be certain that no one is in the guarded area, you must not use the START RESET button.

The START RESET button can be disabled by removing three wires from the MicroLogix controller I/O.

- Wire 6041
- Wire 10231
- Wire 10071

Notes:

Notes:

Notes:

Rockwell Automation Support

Rockwell Automation provides technical information on the Web to assist you in using its products. At <http://www.rockwellautomation.com/support/>, you can find technical manuals, a knowledge base of FAQs, technical and application notes, sample code and links to software service packs, and a MySupport feature that you can customize to make the best use of these tools.

For an additional level of technical phone support for installation, configuration, and troubleshooting, we offer TechConnect support programs. For more information, contact your local distributor or Rockwell Automation representative, or visit <http://www.rockwellautomation.com/support/>.

Installation Assistance

If you experience an anomaly within the first 24 hours of installation, review the information that's contained in this manual. You can contact Customer Support for initial help in getting your product up and running.

United States or Canada	1.440.646.3434
Outside United States or Canada	Use the Worldwide Locator at http://www.rockwellautomation.com/support/americas/phone_en.html , or contact your local Rockwell Automation representative.

New Product Satisfaction Return

Rockwell Automation tests all of its products to ensure that they are fully operational when shipped from the manufacturing facility. However, if your product is not functioning and needs to be returned, follow these procedures.

United States	Contact your distributor. You must provide a Customer Support case number (call the phone number above to obtain one) to your distributor to complete the return process.
Outside United States	Please contact your local Rockwell Automation representative for the return procedure.

Documentation Feedback

Your comments will help us serve your documentation needs better. If you have any suggestions on how to improve this document, complete this form, publication [RA-DU002](#), available at <http://www.rockwellautomation.com/literature/>.

www.rockwellautomation.com

Power, Control and Information Solutions Headquarters

Americas: Rockwell Automation, 1201 South Second Street, Milwaukee, WI 53204 USA, Tel: (1) 414.382.2000, Fax: (1) 414.382.4444

Europe/Middle East/Africa: Rockwell Automation, Vorstlaan/Boulevard du Souverain 36, 1170 Brussels, Belgium, Tel: (32) 2 663 0600, Fax: (32) 2 663 0640

Asia Pacific: Rockwell Automation, Level 14, Core F, Cyberport 3, 100 Cyberport Road, Hong Kong, Tel: (852) 2887 4788, Fax: (852) 2508 1846