

# Integrated Motion on EtherNet/IP Allows you to Use One Network to Integrate High Performance Servo & AC Drive Control, Distribute I/O, HMI, and other EtherNet/IP Devices, for Standard and Safety Applications

**ControlLogix/1756-ENXT(R) Capacity**

- 1-8 position configured drives with 1756-EN2T(R)
- 1-255 position configured drives with 1756-EN3TR (with multiple controllers)
- Unlimited velocity, torque, and Vhz configured drives
- Logix controller drive limit of 100 drives

**ControlLogix/1756-ENXT(R) Configuration**

- USB Port on 1756-EN2T(R)/EN3TR provides easy access to module and networks for configuration, and troubleshooting

**ControlLogix/1756-ENXT(R) Performance**

- 8 drives/ms using either a 1756-EN2T(R) or 1756-EN3TR module

**HMI Capacity**

- 200 screens
- 250 tags per screen

**HMI Configuration Option**

- RS-232 or EtherNet/IP connection.
- As an option to using a PV+ you can use a VersaView industrial computer with windows XP, RSLogix 5000, Drive Executive Lite and RS View Studio for ME to have an HMI and programming terminal in one.

**HMI Performance**

- With 50 tags/display and 100 alarm tags the typical update time on ENET is 1 sec and RS-232 is 2 sec

**Can use:**

- 1756-EN2T for Linear application
- 1756-EN2TR required for DLR application only

**Integrated Motion on EtherNet/IP Configuration**

- Mix and match Motion, Standard I/O, and Safety devices on one network.
- Either Star, Linear, or Device Level Ring (DLR) topologies can be used (or a mix of these topologies)
- In this application, an external switch is not required due to the 2 port embedded linear/ring technology in the products

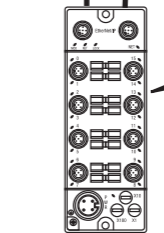
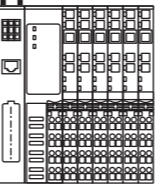
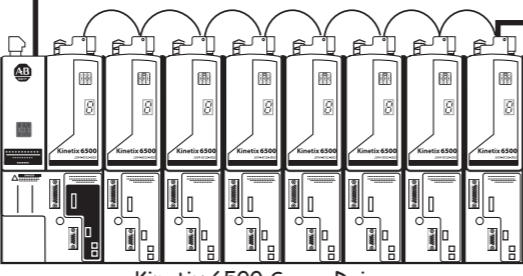
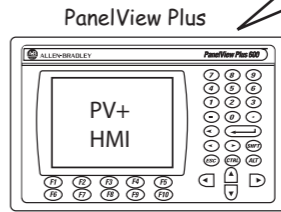
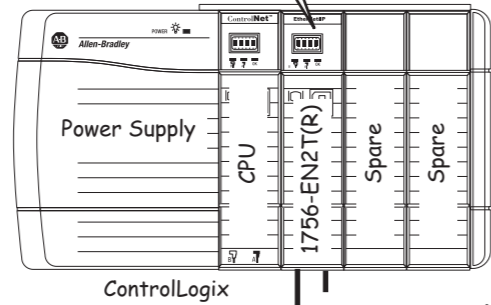
**Optional Device Level Ring (DLR)**

- Single fault tolerant network provides resiliency
- Device level ring requires no additional hardware to implement

The 1783-ETAP can be used to connect devices that do not currently have the 2 port embedded linear/ring technology.

**Optional 1783-ETAP**

- Only needed with the Device Level Ring (DLR)



**Kinetix 6500 Capacity**

- 460V AC Input Voltage
- 1.8 kW to 22 kW
- 0.18-134 Nm torque (1.59-1186 lb-in)
- Up to 7250 rpm
- Up to 2,000,000 feedback resolution
- Embedded EtherNet/IP

**Kinetix 6500 Configuration**

- Full integrated motion support for Kinetix 6500/ PowerFlex 755 using EtherNet/IP
- Can configure for position, velocity, or torque control
- RSLogix 5000 common integrated motion programming, configuration, commissioning, and drive diagnostic & maintenance tools for the Kinetix 6500/ PowerFlex 755
- Use same Motion instructions for Kinetix 6500/PowerFlex 755
- Safety Options:
  - SIL 3, Cat 4, PLe Safe Torque Off
  - SIL 3, Cat 4, PLe Safe Speed (dual encoder)
  - SIL 2 Pld Safe Speed (single encoder)

**Kinetix 6500 Performance**

- High speed registration input on Kinetix drive can trigger a motion task in RSLogix 5000 for faster event task performance

**POINT I/O Capacity**

- The maximum is 63 POINT I/O modules per adapter
- 1734-AENTR EtherNet/IP adapter supports 2 port embedded linear/ring topology

**PowerFlex 4 Class VFD Capacity**

- 0.5 - 15 HP
- 0.2 - 11.2KW
- 120V - 600V
- 24vDC digital I/O
- Analog I/O
- EtherNet/IP adapter

**PowerFlex 4 Class VFD Configuration**

- Built-in operator display for configuration and monitoring
- Remote (Nema 1 & 4) HIM options
- RSLogix 5000 Add On Profiles, DriveExplorer, and DriveExecutive software tool options

**ArmorBlock SOE I/O Module Capacity**

- Sequence of Events (SOE) module
- Time stamp data can be used for motion soft registration support
- Includes 100us transition time stamp

**PowerFlex 4 Class VFD Performance**

- V/Hz or SVC
- Slip compensation
- 0-400Hz
- 97.5% efficiency
- EtherNet/IP allows complete access to data in drive
- "Multi-Drive" feature allows up to 5 drives per node

# Bill of Material

Qty	Catalog #	Description
<b>System: Controller Hardware (choose one)</b>		
1	1756-L7X	CONTROLLOGIX L7X PROCESSOR
<b>System: Controller Hardware</b>		
1	1756-A4	7 SLOT CONTROLLOGIX CHASSIS
1	1756-PA72	85-265 VAC POWER SUPPLY (5V @ 10 AMP)
<b>System: Communication Hardware</b>		
1	1756-EN2T(R)	1 or 2-PORT CLX HI-CAP ENET/IP
-	1756-ENBT	CLX ETHERNET/IP 10/100 BRIDGE MODULE - TWISTED PR (Optional, as needed)
1	1783-EMS08T	STRATIX 6000 MANAGED ETHERNET SWITCH
<b>Motion Hardware</b>		
1	2094-BC02-M02-M	KINETIX POWER IAM, 15A
7	2094-BM01-M	KINETIX POWER MODULE, 9A
0	2094-BM02-M	KINETIX POWER MODULE, 15A
7	1585J-M8CBJM-1	SHIELDED ETHERNET CABLE FOR CIP DRIVES, 1 METER
1	1585J-M8CBJM-5	SHIELDED ETHERNET CABLES FOR CIP DRIVES, 5 METERS
<b>Note: Catalog numbers consist of characters, each of which identifies a specific version or option for that component. Reference Publication GMC-SG002I-EN-E Kinetix Motion Control Selection Guide for additional information</b>		
<b>Drive Hardware</b>		
1	22A-A1P5N114	POWERFLEX 4 DRIVE
1	22-COMM-E	POWERFLEX4 ETHERNET INTERFACE
1	22-XCOMM-DC	EXTERNAL DSI COMM KIT BASE
<b>Note: PowerFlex drives come in many variations - before ordering, you will need to identify voltage rating, horsepower, and enclosure type. In addition, you may wish to add on optional equipment, such as HIM module or Brake Resister. Please refer to the PowerFlex Selection Guide for additional details on selecting the right drive for you application.</b>		
<b>HMI Hardware</b>		
1	2711P-B6C1A	PANELVIEW PLUS 600 COLOR KEY/TOUCH TERMINAL, ETHERNET

**Note:** Panelview 400 and 600 terminals provide a low cost integrated Ethernet solution to provide high performance capability at a affordable price.

1	2711-NC13	5 METER RS232 OPERATING/ PROGRAMMING CABLE
<b>Distributed I/O Hardware - POINT I/O</b>		
1	1734-AENT	1734 ETHERNET/IP ADAPTER
1	1734-FPD	FIELD POTENTIAL DISTRIBUTOR
1	1734-IA2	120V AC 2 CHANNEL INPUT MODULE
1	1734-OA2	120/230V AC 2 CHANNEL OUTPUT MODULE
4	1734-TB	MODULE BASE W/ REMOVABLE IEC SCREW TERMINALS
1	1794-PS13	85-264V AC TO 24V DC 1.3A POWER SUPPLY

<b>Distributed I/O Hardware - OTHER</b>		
1	1732E-IB16M12SOEDR	ARMORBLOCK SOE MODULE
<b>Optional Hardware</b>		
1	6180W-15BPXPH	VERSAVIEW 15-INCH WORKSTATION, KEYPAD & TOUCH PERFORMANCE FEATURES, WINDOWS XP HMI SOFTWARE

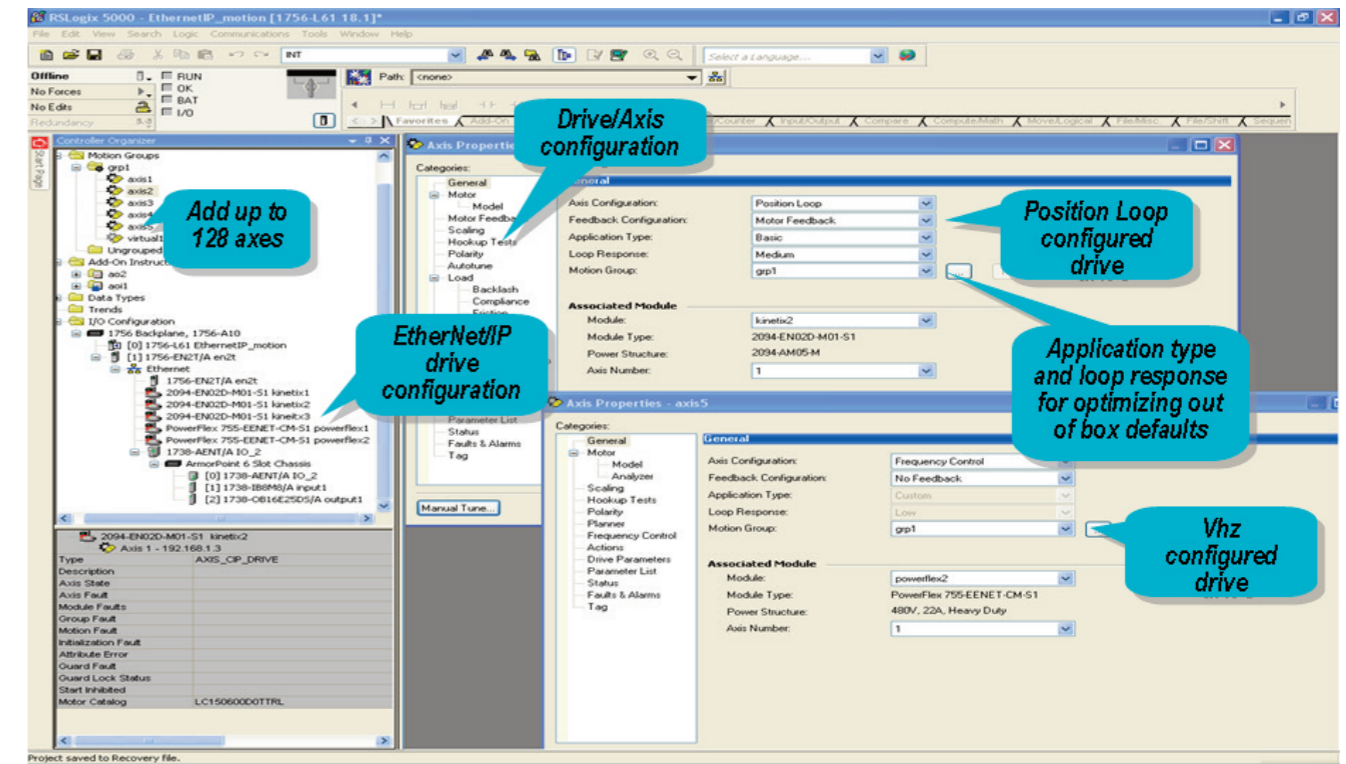
<b>Recommended Software</b>		
1	9324-RLD300yyE	RSLogix 5000 Standard Edition
<b>Note: ControlLogix Controllers can be programmed using RSLogix 5000 Standard, Full, or Pro.</b>		
1	9701-VWSTMENE	RSVIEW STUDIO FOR MACHINE EDITION

**Note:** You will need to purchase the RSView runtime in addition to the studio if you upgrade from PanelView Plus to the VersaView PC.

1	9306-4EXP02ENE	DRIVE EXPLORER
---	----------------	----------------

**Note:** Only required if you do not have RSLogix 5000 Software

Now you can use the same RSLogix5000 software tools and motion programming instructions for both Kinetix 6500 and PowerFlex 755\* position and velocity applications, saving time and effort in programming and commissioning your system.



\* RSLogix5000 support for PowerFlex 755 with Integrated Motion available August 2010.

## About the Products

### Logix Controllers

- A common set of controls, networks and programming software available in multiple hardware platforms
- Multiple control disciplines in a single controller - sequential / motion / drives / process
- Tag-based architecture instead of addresses, provides automatic documentation native in the controller

### Kinetix Servos

- Scalable solution for applications from 100W to 112KW
- Integrated platform to simplify machine design and commissioning
- Smart Motor Technology to provide automatic identification of correct motor-to-drive connectivity

### PowerFlex Drives

- Serves applications ranging from 0.2 kW (0.25 hp) to 6,770 kW (9,000 hp)
- Hundreds of pieces of status and diagnostic information are shared with Logix controllers directly

### PanelView Plus HMI

- Reuse tags from Logix controllers by choosing them from a list
- 4"-15" screen sizes available
- Touchscreen, keypad or combination
- Advanced Operator Interface features such as trending, expressions, data logging, animation, diagnostics and alarming

### POINT I/O

- Available in IP-20 or IP-67 styles
- Densities from 2-8 points per module
- Supports EtherNet/IP, ControlNet, DeviceNet and 3rd party networks

### For More Information and Help

For more information contact your local distributor or Rockwell Automation sales representative.

- www.ab.com
- Publication Library
- My Support
- A - Z Product Directory
- samplecode.rockwellautomation.com

## About this Configuration

This Integrated Architecture system demonstrates the power of the Integrated Motion on EtherNet/IP System. This system utilizes standard EtherNet/IP technology to allow you to easily mix and match high speed Motion control, I/O control, drive control, and HMI on a single EtherNet/IP network for both standard and safety applications.

A key advantage of this architecture is the ability to use RSLogix 5000 common integrated motion programming, configuration, commissioning, and motion tools for the Kinetix 6500 and PowerFlex 755\* family of products.

# Integrated Motion on EtherNet/IP Allows you to Use One Network to Integrate High Performance Servo & AC Drive Control, Distribute I/O, HMI, and other EtherNet/IP Devices, for Standard and Safety Applications

- ControlLogix/1756-ENXT(R) Capacity**
- 1-8 position configured drives with 1756-EN2T(R)
  - 1-255 position configured drives with 1756-EN3TR (with multiple controllers)
  - Unlimited velocity, torque, and Vhz configured drives
  - Logix controller drive limit of 100 drives

- ControlLogix/1756-ENXT(R) Configuration**
- USB Port on 1756-EN2T(R)/EN3TR provides easy access to module and networks for configuration, and troubleshooting

- ControlLogix/1756-ENXT(R) Performance**
- 8 drives/ms using either a 1756-EN2T(R) or 1756-EN3T module

The 1783-ETAP can be used to connect devices that do not currently have the 2 port embedded linear/ring technology.

**Configuration**  
EtherNet/IP, DeviceNet and RA Controllers enable business systems to plant floor communications, providing the ability to share thousands of pieces of information with no programming required

- Switch Configurations Options**
- Can use embedded, unmanaged, or managed switches from any switch manufacturer.
  - Recommended Rockwell Automation switches available include:
    - Stratix 8000 and 6000 Managed Switches
    - Stratix 2000 unmanaged switch
  - 2 port embedded linear/ring technology - available in:
    - 1756-EN2TR ControlLogix module
    - 1756-EN3TR ControlLogix module
    - 1734-AENTR Point I/O Adapter
    - ArmorBlock SOE I/O module
    - Kinetix 6500
  - 1783-ETAP Standalone 3 port tap allows any single port device to participate

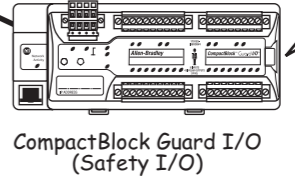
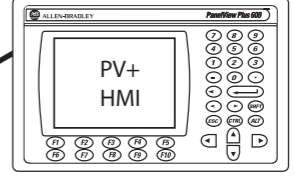
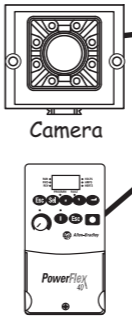
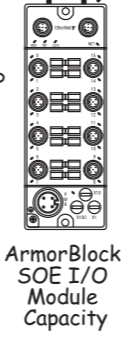
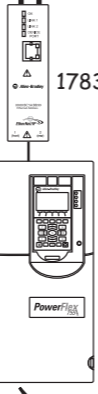
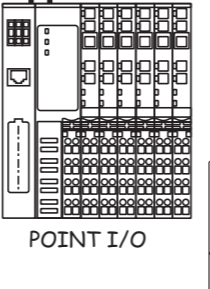
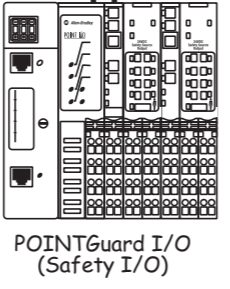
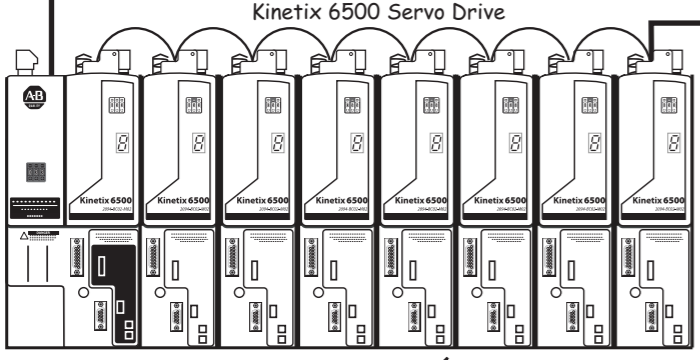
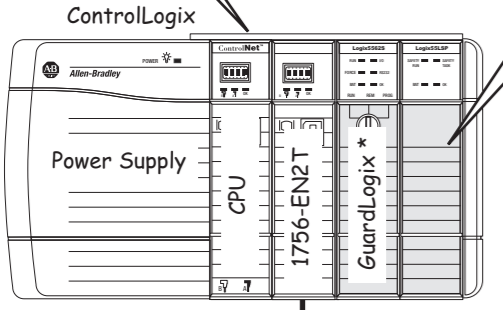
- Switch Performance**
- In many applications an external switch is not required due to the high precision 2 port embedded linear/ring technology included in the products
  - In topologies where an external switch is used (e.g. Star), either a managed or unmanaged switch can be used, depending on your application requirements

- Integrated Motion on EtherNet/IP Configuration**
- Mix and match Motion, Standard I/O, and Safety devices on one network.
  - Either Star, Linear, or Device Level Ring (DLR) topologies can be used (or a mix of these topologies)

- ArmorBlock SOE I/O Module Capacity**
- Sequence of Events (SOE) module
  - Time stamp data can be used for motion soft registration support
  - Includes 100us transition time stamp

- \* Optional Modules**
- GuardLogix only required for safety applications

- POINT I/O Capacity**
- The maximum is 63 POINT I/O modules per adapter
  - 1734-AENTR EtherNet/IP adapter utilizes embedded switch technology to support linear or ring topologies
  - You can mix Safety and Standard Point I/O modules in the same rack



- Kinetix 6500 Capacity**
- 460V AC Input Voltage
  - 1.8 kW to 22 kW
  - 0.18-134 Nm torque (1.59-1186 lb-in)
  - Up to 7250 rpm
  - Up to 2,000,000 feedback resolution
  - Embedded EtherNet/IP

- Kinetix 6500 Performance**
- High speed registration input on Kinetix drive can trigger a motion task in RSLogix 5000 for faster event task performance

- Kinetix 6500 Configuration**
- Full integrated motion support for Kinetix 6500/ PowerFlex 755\* using EtherNet/IP
  - Can configure for position, velocity, or torque control
  - RSLogix 5000 common integrated motion programming, configuration, commissioning, and drive diagnostic & maintenance tools for the Kinetix 6500/ PowerFlex 755\*
  - Use same Motion instructions for Kinetix 6500/PowerFlex 755\*
  - Safety Options:
    - SIL 3, Cat 4, PLe Safe Torque Off
    - SIL 3, Cat 4, PLe Safe Speed (dual encoder)
    - SIL 2 Pld Safe Speed (single encoder)

- PowerFlex 755 VFD Capacity**
- 1-650Hp
  - .75-400kW
  - 400/480VAC & 540/650VDC
  - Embedded EtherNet/IP

- PowerFlex 755 VFD Configuration**
- Full integrated motion support for PowerFlex 755\*/Kinetix 6500 using EtherNet/IP
  - Can configure for position, velocity, torque, or V/Hz control
  - RSLogix 5000 common integrated motion programming, configuration, commissioning, and motion tools for the PowerFlex 755\*/Kinetix 6500
  - Use same Motion instructions for Kinetix 6500/PowerFlex 755\*
  - Safety Options:
    - SIL 3, Cat 3, PLe Safe Torque Off
    - SIL 3, Cat 4, PLe Safe Speed

- PowerFlex 755 VFD Performance**
- Speed, Position, and Torque Control

- Safety Capacity**
- Distributed Safety functionality across the network supported in such products as CompactBlock Guard I/O, POINT Guard I/O, Kinetix 6500, and PowerFlex 755

\* RSLogix 5000 support for PowerFlex 755 with Integrated Motion available August 2010.

Note: Performance is what we tested, not the max capacity



**Integrated Motion on EtherNet/IP: 8 Axis Linear/Star with PowerFlex 755 and Safety**

# Bill of Material

Qty	Catalog #	Description
<b>System: Controller Hardware (choose one)</b>		
1	1756-L7X	CONTROLLOGIX L7X PROCESSOR
<b>System: Safety Controller Hardware (Optional)</b>		
1	1756-L6XS	GUARDLOGIX L6XS SAFETY PRIMARY PROCESSOR
1	1756-LSP	GUARDLOGIX SAFETY PARTNER
<b>System: Controller Chassis Hardware</b>		
1	1756-A7	7 SLOT CONTROLLOGIX CHASSIS
1	1756-EN2T	1-PORT CLX HI-CAP ENET/IP
-	1756-ENBT	CLX ETHERNET/IP 10/100 BRIDGE MODULE - TWISTED PR (Optional, as needed)
1	1783-EMS08T	STRATIX 6000 MANAGED ETHERNET SWITCH
<b>Motion Hardware</b>		
1	2094-BC02-M02-M	KINETIX POWER IAM, 15A
7	2094-BM01-M	KINETIX POWER MODULE, 9A
0	2094-BM02-M	KINETIX POWER MODULE, 15A
8	2094-EN02D-M01-S0	ETHERNET/IP SAFE OFF CONTROL MODULE
7	1585J-M8CBJM-1	SHIELDED ETHERNET CABLE FOR CIP DRIVES, 1 METER
1	1585J-M8CBJM-5	SHIELDED ETHERNET CABLES FOR CIP DRIVES, 5 METERS

**Note:** Catalog numbers consist of characters, each of which identifies a specific version or option for that component. Reference Publication GMC-SG002I-EN-E Kinetix Motion Control Selection Guide for additional information

<b>Drive Hardware</b>		
1	22A-A1P5N114	POWERFLEX 4 DRIVE
1	22-COMM-E	POWERFLEX4 ETHERNET INTERFACE
1	22-XCOMM-DC	EXTERNAL DSI COMM KIT BASE
1	20G...	POWERFLEX 755* DRIVE

**Note:** PowerFlex drives come in many variations - before ordering, you will need to identify voltage rating, horsepower, and enclosure type. In addition, you may wish to add on optional equipment, such as HIM module or Brake Resister. Please refer to the PowerFlex Selection Guide for additional details on selecting the right drive for you application.

<b>HMI Hardware</b>		
1	2711P-B6C1A	PANELVIEW PLUS 600 COLOR KEY/TOUCH TERMINAL, ETHERNET

## About this Configuration

This Integrated Architecture system demonstrates the power of the Integrated Motion on EtherNet/IP System. This system utilizes standard EtherNet/IP technology to allow you to easily mix and match high speed Motion control, I/O control, drive control, and HMI on a single EtherNet/IP network for both standard and safety applications.

A key advantage of this architecture is the ability to use RSLogix 5000 common integrated motion programming, configuration, commissioning, and motion tools for the Kinetix 6500 and PowerFlex 755\* family of products.

**Note:** Panelview 400 and 600 terminals provide a low cost integrated Ethernet solution to provide high performance capability at a affordable price.

1	2711-NC13	5 METER RS232 OPERATING/PROGRAMMING CABLE
<b>Distributed I/O Hardware - POINT I/O</b>		
1	1734-AENT	1734 ETHERNET/IP ADAPTER
1	1734-FPD	FIELD POTENTIAL DISTRIBUTOR
1	1734-IA2	120V AC 2 CHANNEL INPUT MODULE
1	1734-OA2	120/230V AC 2 CHANNEL OUTPUT MODULE
1	1734-IB8S	8 CHANNEL SAFETY SINKING INPUT MODULE (Safety Option)
1	1734-OB8S	24VDC OUTPUT POINT GUARD SAFETY MODULE (Safety Option)
4	1734-TB	MODULE BASE W/ REMOVABLE IEC SCREW TERMINALS
1	1794-PS13	85-264V AC TO 24V DC 1.3A POWER SUPPLY

<b>Distributed I/O Hardware - OTHER</b>		
1	1791ES-IB8XOBV4	24VDC INPUT/OUTPUT GUARDBLOCK SAFETY MODULE (Safety Option)
1	1732E-IB16M12SOEDR	ARMORBLOCK SOE MODULE

<b>Optional Hardware</b>		
1	6180W-15BPXPH	VERSAVIEW 15-INCH WORKSTATION, KEYPAD & TOUCH PERFORMANCE FEATURES, WINDOWS XP HMI SOFTWARE

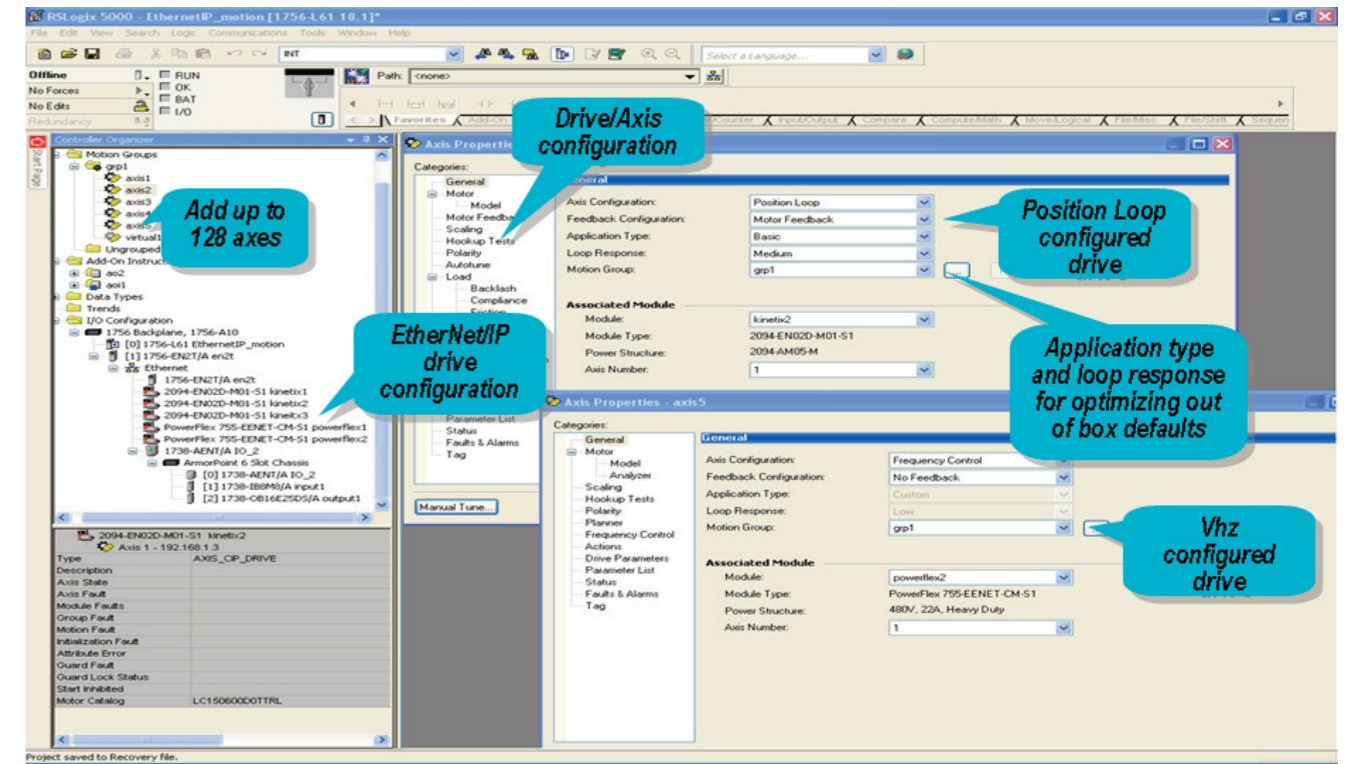
<b>Recommended Software</b>		
1	9324-RLD600yyE	RSLogix 5000 Full Edition (Includes GuardLogix Support)
1	9701-VWSTMENE	RSVIEW STUDIO FOR MACHINE EDITION

**Note:** You will need to purchase the RSView runtime in addition to the studio if you upgrade from PanelView Plus to the VersaView PC.

1	9306-4EXP02ENE	DRIVE EXPLORER
---	----------------	----------------

**Note:** Only required if you do not have RSLogix 5000 Software

Now you can use the same RSLogix5000 software tools and motion programming instructions for both Kinetix 6500 and PowerFlex 755\* position and velocity applications, saving time and effort in programming and commissioning your system.



\* RSLogix5000 support for PowerFlex 755 with Integrated Motion available August 2010.

## About the Products

### Logix Controllers

- A common set of controls, networks and programming software available in multiple hardware platforms
- Multiple control disciplines in a single controller - sequential / motion / drives / process
- Tag-based architecture instead of addresses, provides automatic documentation native in the controller

### Kinetix Servos

- Scalable solution for applications from 100W to 112KW
- Integrated platform to simplify machine design and commissioning
- Smart Motor Technology to provide automatic identification of correct motor-to-drive connectivity

### PowerFlex Drives

- Serves applications ranging from 0.2 kW (0.25 hp) to 6,770 kW (9,000 hp)
- Hundreds of pieces of status and diagnostic information are shared with Logix controllers directly

### PanelView Plus HMI

- Reuse tags from Logix controllers by choosing them from a list
- 4"-15" screen sizes available
- Touchscreen, keypad or combination
- Advanced Operator Interface features such as trending, expressions, data logging, animation, diagnostics and alarming

### POINT I/O

- Available in IP-20 or IP-67 styles
- Densities from 2-8 points per module
- Supports EtherNet/IP, ControlNet, DeviceNet and 3rd party networks

### For More Information and Help

For more information contact your local distributor or Rockwell Automation sales representative.

- www.ab.com
- Publication Library
- My Support
- A - Z Product Directory
- samplecode.rockwellautomation.com

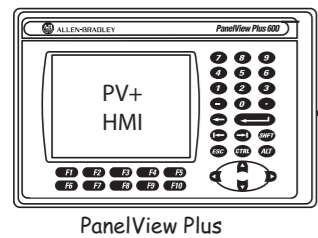
# Integrated Motion on EtherNet/IP Allows you to Use One Network to Integrate High Performance Servo & AC Drive Control, Distribute I/O, HMI, and other EtherNet/IP Devices, for Standard and Safety Applications

## Switch Configurations Options

- Can use embedded, unmanaged, or managed switches from any switch manufacturer.
- Recommended Rockwell Automation switches available include:
  - Stratix 8000 and 6000 Managed Switches
  - Stratix 2000 unmanaged switch
- 2 port embedded linear/ring technology - available in:
  - 1756-EN2TR ControllLogix module
  - 1756-EN3TR ControllLogix module
  - 1734-AENTR Point I/O Adapter
  - ArmorBlock SOE I/O module
  - Kinetix 6500
- 1783-ETAP Standalone 3 port tap allows any single port device to participate

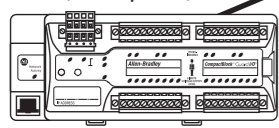
## Switch Performance

- In many applications an external switch is not required due to the high precision 2 port embedded linear/ring technology included in the products
- In topologies where an external switch is used (e.g. Star), either a managed or unmanaged switch can be used, depending on your application requirements.

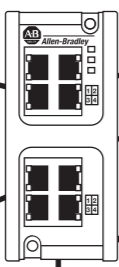


PanelView Plus

CompactBlock Guard I/O (Safety I/O)



Stratix 6000 Switch



Camera

PowerFlex 4 Class VFD



## Safety Capacity

Distributed Safety functionality across the network supported in such products as CompactBlock Guard I/O, POINT Guard I/O, Kinetix 6500, and PowerFlex 755

## Kinetix 6500 Configuration

- Full integrated motion support for Kinetix 6500/ PowerFlex 755\* using EtherNet/IP
- Can configure for position, velocity, or torque control
- RSLogix 5000 common integrated motion programming, configuration, commissioning, and drive diagnostic & maintenance tools for the Kinetix 6500/ PowerFlex 755\*
- Use same Motion instructions for Kinetix 6500/PowerFlex 755\*
- Safety Options:
  - SIL 3, Cat 4, PLe Safe Torque Off
  - SIL 3, Cat 4, PLe Safe Speed (dual encoder)
  - SIL 2 Pld Safe Speed (single encoder)

## Kinetix 6500 Capacity

- 460V AC Input Voltage
- 1.8 kW to 22 kW
- 0.18-134 Nm torque (1.59-1186 lb-in)
- Up to 7250 rpm
- Up to 2,000,000 feedback resolution
- Embedded EtherNet/IP

## Kinetix 6500 Performance

- High speed registration input on Kinetix drive can trigger a motion task in RSLogix 5000 for faster event task performance

## ControllLogix/1756-ENXT(R) Capacity

- 1-8 position configured drives with 1756-EN2T(R)
- 1-255 position configured drives with 1756-EN3TR (with multiple controllers)
- Unlimited velocity, torque, and Vhz configured drives
- Logix controller drive limit of 100 drives

## ControllLogix/1756-ENXT(R) Configuration

- USB Port on 1756-EN2T(R)/EN3TR provides easy access to module and networks for configuration, and troubleshooting

## ControllLogix/1756-ENXT(R) Performance

- 8 drives/ms using either a 1756-EN2T(R) or 1756-EN3TR module

Plant MRP System, Database, Order Tracking Systems

## Configuration

EtherNet/IP, DeviceNet and RA Controllers enable business systems to plant floor communications, providing the ability to share thousands of pieces of information with no programming required

## \* Optional Modules

- GuardLogix only required for safety applications

## Integrated Motion on EtherNet/IP Configuration

- Mix and match Motion, Standard I/O, and Safety devices on one network.
- Either Star, Linear, or Device Level Ring (DLR) topologies can be used (or a mix of these topologies)

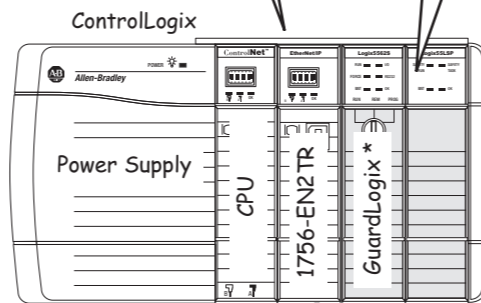
The 1783-ETAP can be used to connect devices that do not currently have the 2 port embedded linear/ring technology.

## POINT I/O Capacity

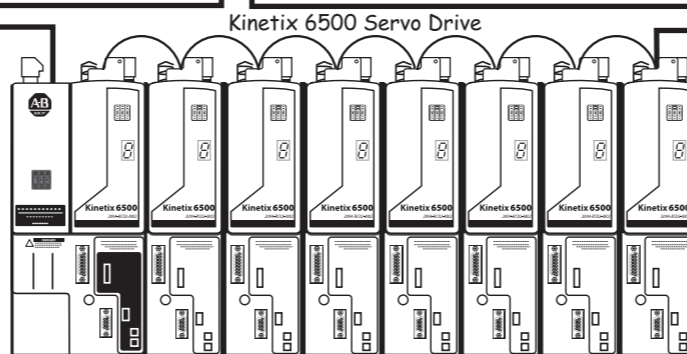
- The maximum is 63 POINT I/O modules per adapter
- 1734-AENTR EtherNet/IP adapter utilizes embedded switch technology to support linear or ring topologies
- You can mix Safety and Standard Point I/O modules in the same rack

## ArmorBlock SOE I/O Module Capacity

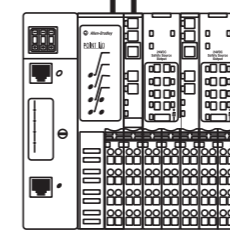
- Sequence of Events (SOE) module
- Time stamp data can be used for motion soft registration support
- Includes 100us transition time stamp



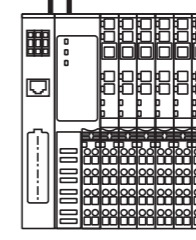
Device Level Ring (DLR)



Kinetix 6500 Servo Drive

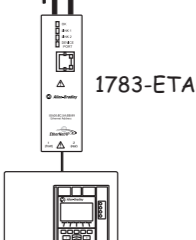


POINTGuard I/O (Safety I/O)

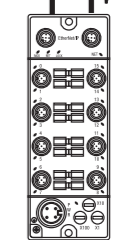


POINT I/O

PowerFlex 755\* Architecture Class Drive



1783-ETAP



ArmorBlock SOE I/O Module Capacity

## PowerFlex 755 VFD Configuration

- Full integrated motion support for PowerFlex 755\*/Kinetix 6500 using EtherNet/IP
- Can configure for position, velocity, torque, or V/Hz control
- RSLogix 5000 common integrated motion programming, configuration, commissioning, and motion tools for the PowerFlex 755\*/Kinetix 6500
- Use same Motion instructions for Kinetix 6500/PowerFlex 755\*
- Safety Options:
  - SIL 3, Cat 3, PLe Safe Torque Off
  - SIL 3, Cat 4, PLe Safe Speed

## PowerFlex 755 VFD Capacity

- 1-650Hp
- .75-400kW
- 400/480VAC & 540/650VDC
- Embedded EtherNet/IP

## PowerFlex 755 VFD Performance

- Speed, Position, and Torque Control

\* RSLogix 5000 support for PowerFlex 755 with Integrated Motion available August 2010.

# Bill of Material

Qty	Catalog #	Description
<b>System: Controller Hardware (choose one)</b>		
1	1756-L7X	CONTROLLOGIX L7X PROCESSOR
<b>System: Safety Controller Hardware (Optional)</b>		
1	1756-L6XS	GUARDLOGIX L6XS SAFETY PRIMARY PROCESSOR
1	1756-LSP	GUARDLOGIX SAFETY PARTNER
<b>System: Controller Chassis Hardware</b>		
1	1756-A7	7 SLOT CONTROLLOGIX CHASSIS
1	1756-EN2TR	2-PORT CLX HI-CAP ENET/IP
-	1756-ENBT	CLX ETHERNET/IP 10/100 BRIDGE MODULE - TWISTED PR (Optional, as needed)
1	1783-EMS08T	STRATIX 6000 MANAGED ETHERNET SWITCH
<b>Motion Hardware</b>		
1	2094-BC02-M02-M	KINETIX POWER IAM, 15A
7	2094-BM01-M	KINETIX POWER MODULE, 9A
0	2094-BM02-M	KINETIX POWER MODULE, 15A
8	2094-EN02D-M01-S0	ETHERNET/IP SAFE OFF CONTROL MODULE
7	1585J-M8CBJM-1	SHIELDED ETHERNET CABLE FOR CIP DRIVES, 1 METER
1	1585J-M8CBJM-5	SHIELDED ETHERNET CABLES FOR CIP DRIVES, 5 METERS
<b>Drive Hardware</b>		
1	22A-A1P5N114	POWERFLEX 4 DRIVE
1	22-COMM-E	POWERFLEX4 ETHERNET INTERFACE
1	22-XCOMM-DC	EXTERNAL DSI COMM KIT BASE
1	20G...	POWERFLEX 755* DRIVE
<b>HMI Hardware</b>		
1	2711P-B6C1A	PANELVIEW PLUS 600 COLOR KEY/TOUCH TERMINAL, ETHERNET

*Note: Panelview 400 and 600 terminals provide a low cost integrated Ethernet solution to provide high performance capability at a affordable price.*

1	2711-NC13	5 METER RS232 OPERATING/ PROGRAMMING CABLE
<b>Distributed I/O Hardware - POINT I/O</b>		
1	1734-AENT	1734 ETHERNET/IP ADAPTER
1	1734-FPD	FIELD POTENTIAL DISTRIBUTOR
1	1734-IA2	120V AC 2 CHANNEL INPUT MODULE
1	1734-OA2	120/230V AC 2 CHANNEL OUTPUT MODULE
1	1734-IB8S	8 CHANNEL SAFETY SINKING INPUT MODULE (Safety Option)
1	1734-OB8S	24VDC OUTPUT POINT GUARD SAFETY MODULE (Safety Option)
4	1734-TB	MODULE BASE W/ REMOVABLE IEC SCREW TERMINALS
1	1794-PS13	85-264V AC TO 24V DC 1.3A POWER SUPPLY

<b>Distributed I/O Hardware - OTHER</b>		
1	1791ES-IB8XOBV4	24VDC INPUT/OUTPUT GUARDBLOCK SAFETY MODULE (Safety Option)
1	1732E-IB16M12SOEDR	ARMORBLOCK SOE MODULE

<b>Optional Hardware</b>		
1	6180W-15BPXPH	VERSAVIEW 15-INCH WORKSTATION, KEYPAD & TOUCH PERFORMANCE FEATURES, WINDOWS XP HMI SOFTWARE

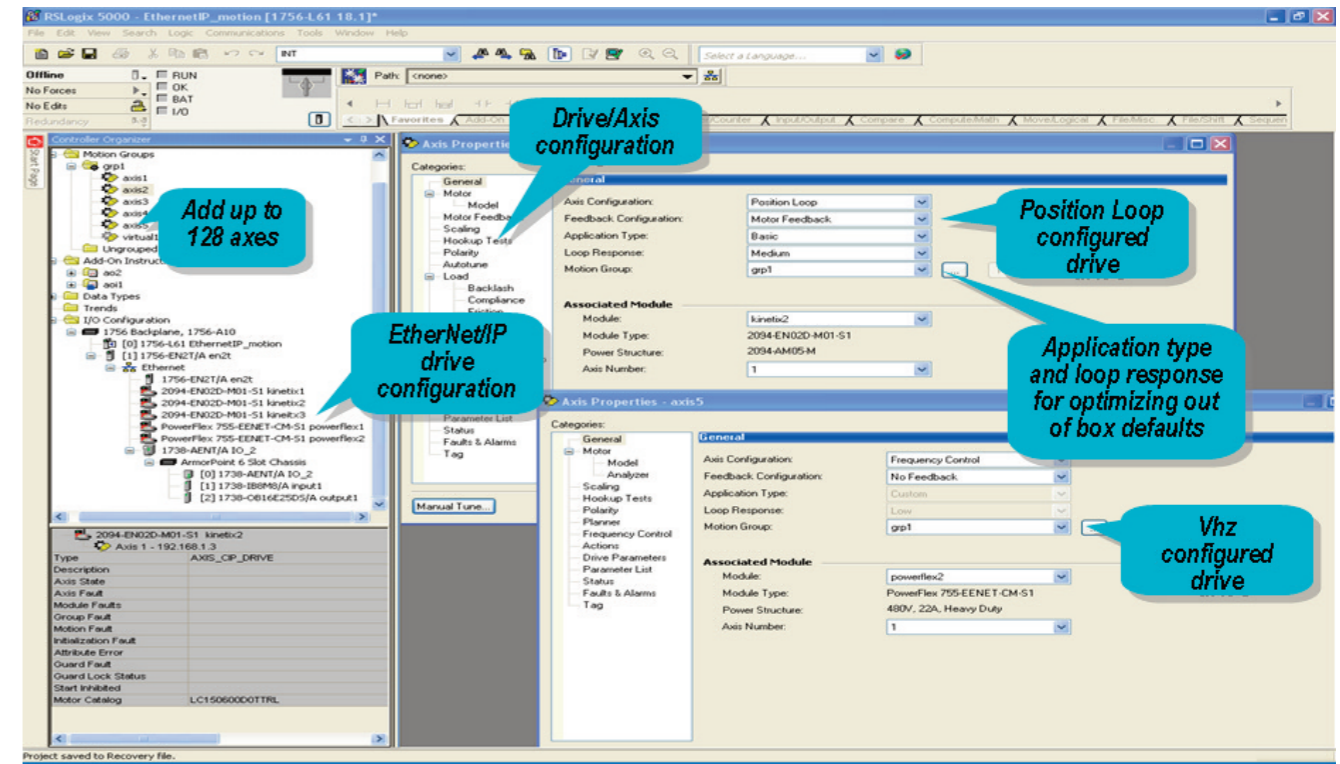
<b>Recommended Software</b>		
1	9324-RLD600yyE	RSLogix 5000 Full Edition (Includes GuardLogix Support)
1	9701-VWSTMENE	RSVIEW STUDIO FOR MACHINE EDITION

*Note: You will need to purchase the RSView runtime in addition to the studio if you upgrade from PanelView Plus to the VersaView PC.*

1	9306-4EXP02ENE	DRIVE EXPLORER
---	----------------	----------------

*Note: Only required if you do not have RSLogix 5000 Software*

Now you can use the same RSLogix5000 software tools and motion programming instructions for both Kinetix 6500 and PowerFlex 755\* position and velocity applications, saving time and effort in programming and commissioning your system.



\* RSLogix5000 support for PowerFlex 755 with Integrated Motion available August 2010.

## About the Products

### Logix Controllers

- A common set of controls, networks and programming software available in multiple hardware platforms
- Multiple control disciplines in a single controller - sequential / motion / drives / process
- Tag-based architecture instead of addresses, provides automatic documentation native in the controller

### Kinetix Servos

- Scalable solution for applications from 100W to 112KW
- Integrated platform to simplify machine design and commissioning
- Smart Motor Technology to provide automatic identification of correct motor-to-drive connectivity

### PowerFlex Drives

- Serves applications ranging from 0.2 kW (0.25 hp) to 6,770 kW (9,000 hp)
- Hundreds of pieces of status and diagnostic information are shared with Logix controllers directly

### PanelView Plus HMI

- Reuse tags from Logix controllers by choosing them from a list
- 4"-15" screen sizes available
- Touchscreen, keypad or combination
- Advanced Operator Interface features such as trending, expressions, data logging, animation, diagnostics and alarming

### POINT I/O

- Available in IP-20 or IP-67 styles
- Densities from 2-8 points per module
- Supports EtherNet/IP, ControlNet, DeviceNet and 3rd party networks

### For More Information and Help

For more information contact your local distributor or Rockwell Automation sales representative.

- www.ab.com
- Publication Library
- My Support
- A - Z Product Directory
- samplecode.rockwellautomation.com

## About this Configuration

This Integrated Architecture system demonstrates the power of the Integrated Motion on EtherNet/IP System. This system utilizes standard EtherNet/IP technology to allow you to easily mix and match high speed Motion control, I/O control, drive control, and HMI on a single EtherNet/IP network for both standard and safety applications.

A key advantage of this architecture is the ability to use RSLogix 5000 common integrated motion programming, configuration, commissioning, and motion tools for the Kinetix 6500 and PowerFlex 755\* family of products.