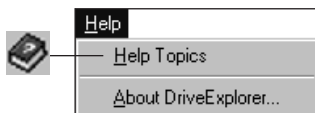
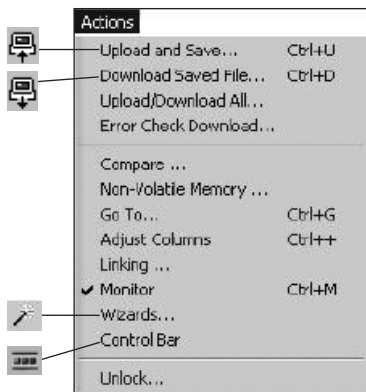
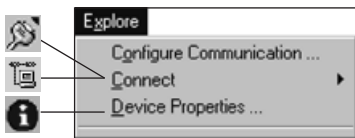
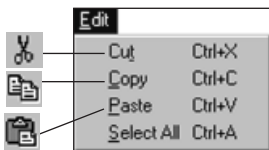
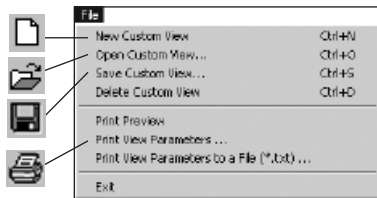


# MENUS AND COMMANDS



## DriveExplorer contains the following menus and commands:

**Important:** Not all commands are available in the DriveExplorer Lite version.

With commands in the **File** menu, you can perform these tasks:

- Create a new custom view (a group of user-selected parameters).
- Open a previously saved custom view.
- Save parameters links or custom views to a file.
- Delete the currently selected custom view.
- View the page layout before you print.
- Print the parameters in the right pane.
- Save parameter information in a tab delimited text file to print later.
- Exit DriveExplorer.

With commands in the **Edit** menu, you can perform these tasks:

- Clear the selected parameters from a custom view.
- Copy the selected parameters to the clipboard.
- Paste parameters into a custom view.
- Select all currently displayed parameters in the right pane.

With commands in the **Explore** menu, you can perform these tasks:

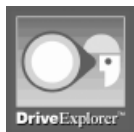
- Select serial or Ethernet communications.
- Change serial port, baud rate or checksum.
- Create serial or Ethernet connection to one or more products and adapters.
- View detailed status information about the currently selected product or adapter and/or flash update a device.

With commands in the **Actions** menu, you can perform these tasks:

- Upload parameters or links and save them to a file.
- Download a previously saved parameter file to the currently selected product or adapter.
- Upload/download all data in a node.
- Compare parameter values of the currently selected device to those in a previously saved file or to factory default values. Also, compare two files.
- Work with the non-volatile memory options in a product.
- Go to a parameter to edit by entering the parameter number.
- Resize the columns in the right pane.
- Create parameter links in products that support this function.
- Launch setup wizards
- Monitor either continually updated parameter values or fixed parameter values.
- Turn on/off the control bar.

With commands in the **Help** menu, you can perform these tasks:

- Display the DriveExplorer online help.
- Display version information about DriveExplorer.



**Rockwell  
Automation**

6400 W. Enterprise Dr.  
Mequon, WI 53092

Serial Number: \_\_\_\_\_

Publication 9306-QR001C-EN-P — September 2005  
Copyright © 2005 Rockwell Automation.  
All Rights Reserved. Printed in U.S.A.  
P/N: DEFULL02ENU06



# DriveExplorer™ PC SOFTWARE SYSTEM REQUIREMENTS/ INSTALLMENT INSTRUCTIONS VERSION 5.01

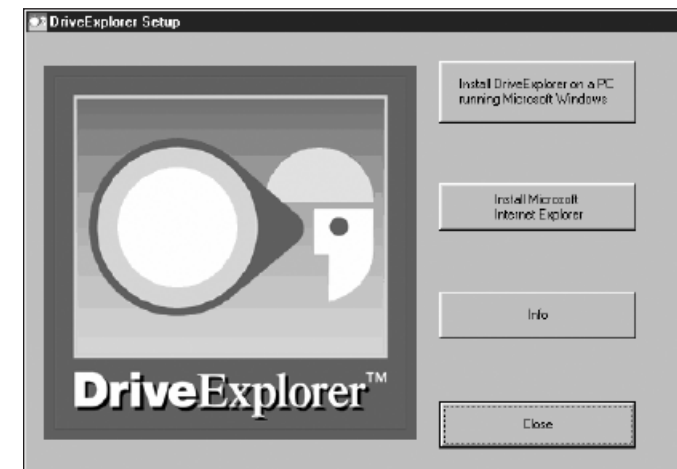
## DriveExplorer SYSTEM REQUIREMENTS

Windows NT 4.0 (Service Pack 6a or later), Windows 2000 (Service Pack 3 or later), and Windows XP (Service Pack 1 or later) personal computer with 486 66MHz processor or better with at least 16 MB of RAM and 6 MB of hard disk space, VGA monitor, CD-ROM drive (for installation only), mouse or other pointing device, keyboard, serial communications or Ethernet connection. Internet Explorer version 6.0 (included on CD) or later must be installed on your PC.

## DriveExplorer FOR PC INSTALLATION INSTRUCTIONS

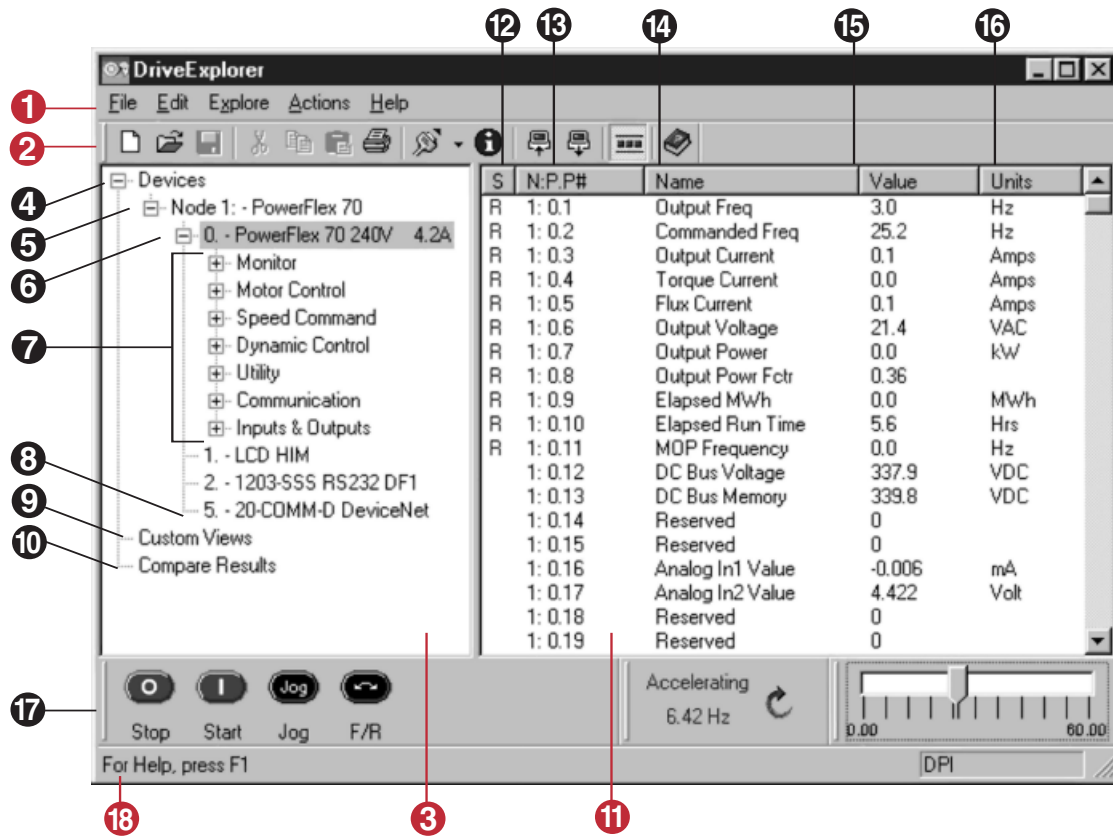
*Note: It is strongly recommended that you quit all Windows programs before running this Set Up program.*

1. Insert the DriveExplorer installation CD into the PC's CD-ROM drive. The installation application should open automatically. If the installation application does not open automatically, run Setup.exe at the root of the installation CD. The DriveExplorer Setup screen appears:



2. Click the Install DriveExplorer on a PC running Microsoft Windows button.
3. Follow the instructions in the Setup Wizard and respond to the prompts on the PC.
4. If you do not have Microsoft Internet Explorer installed on your PC:
  - a. Click the Install Microsoft Internet Explorer button.
  - b. Follow the instructions in the Setup Wizard and respond to the prompts on the PC.
5. When installation finishes, click Close to close the installation application on your PC.

# DriveExplorer INTERFACE



**Important:** Click a plus sign to expand a branch. Click a minus sign to close a branch.

Number	Name	Description
1	<b>Menus</b>	Contains the commands that you use to perform tasks. For example, you can select <b>Actions &gt; Upload and Save</b> to save parameter data to a file.
2	<b>Tool Bar</b>	The tool bar contains shortcuts to several commonly used commands.
3	<b>Left Pane</b>	Contains the devices to which you are connected, the custom views that you have created, and the compare results if you have performed a compare. <b>Important:</b> A plus sign indicates that there are additional items under the item. Click the plus sign to view those items.
4	Devices	Heading under which the nodes to which you are connected appear. In the above example, there is only one connected node.
5	Node	A node is a product and its adapter(s). A number and name identify each node. This name may be changed by the user.
6	Product	The product port number, name, and description. The port number 0 indicates this is a product, not an adapter. The product above is a PowerFlex 70 drive.
7	Files and Groups	Logically ordered collections of the parameters. The PowerFlex 70 drive contains seven files. <b>Important:</b> Not all products group their parameters.
8	Adapter	The adapter port number and name. In the above example, a 1203-SSS converter is used and is connected to port 2.
9	Custom Views	Heading under which the custom views that you have created appear. A custom view is a group of parameters from different products and adapters that you paste on the same screen to make monitoring easier. (Full Version Only)
10	Compare Results	Heading under which the resulting output of a compare appears. In DriveExplorer, you can compare the parameter values in a selected device to parameter values in a DriveExplorer file or to factory-default parameter values. (Full Version Only)
11	<b>Right Pane</b>	Displays the parameters for the selected product, group, adapter, or custom view. In the above example, the PowerFlex 70 drive is the selected product, so its parameters appear in the right pane. <b>Important:</b> When the right pane is blank, the selected item in the left pane does not have parameters.
12	S	S (status). In this column, you see whether a parameter is <b>R</b> (Read Only) or * (Editable). When DriveExplorer is monitoring live data, you see these symbols appear and disappear.
13	N:P:P#	N (node number) is the network node number for the device. P (port number) is the port number for the device. P# (parameter number) is the parameter number in the device. The first parameter is from the PowerFlex 70 drive at node 1. The port number 0 indicates that this parameter is from the product, not its adapter. The P# 1 indicates that this is parameter 1 in the product.
14	Name	The parameter name. <i>Output Freq</i> is the parameter name of the first parameter.
15	Value	The value of the parameter. 0 is the value of the first parameter.
16	Units	The unit of measurement for the parameter. In the example above, Vlt is the unit of measurement of the first parameter. There is no unit of measure for parameter number 8.
17	Control Bar	The Control Bar provides an interface for controlling a device. (Full Version Only)
18	<b>Status Bar</b>	The status bar provides a brief description about the command or tool bar button over which the mouse pointer is positioned.