

PlantPax™ Sequencer Object

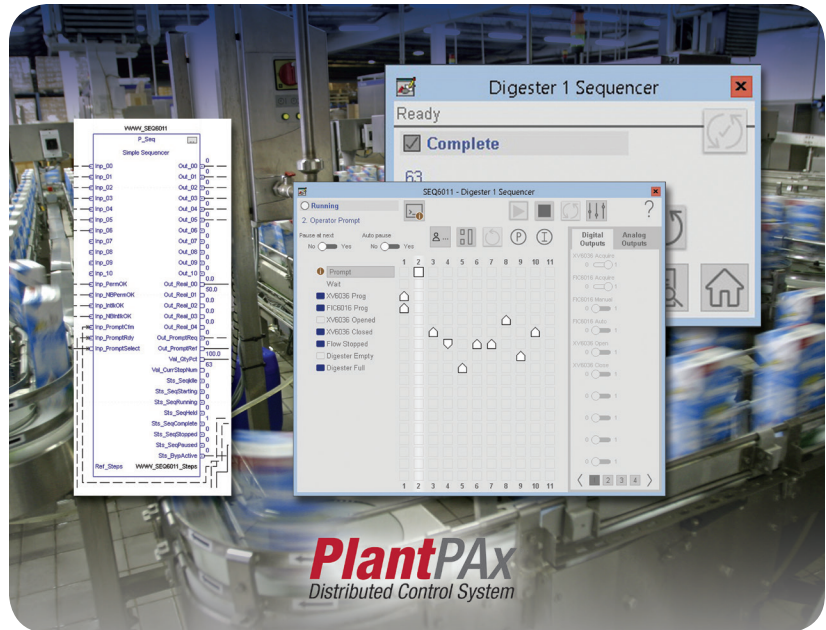
Scalable Controller-based Sequencing Solution

Features and Benefits

PlantPax Sequencer Object significantly reduces engineering time for system integrators and process equipment builders while providing key controller-based sequence management capability for end-users.

PlantPax Sequencer Object Helps:

- **End Users** increase process repeatability by employing a simple and flexible process control strategy focused on step-by-step configuration and management enabling the automatic execution of frequent and/or key procedures.
- **End Users and OEMs** reduce startup and process configuration time by increasing commissioning speed and automating common operator procedures.
- **OEMs** reduce engineering costs and delivery time by completing processes through step configuration rather than programming.
- **System Integrators** improve effectiveness of solutions by capturing process needs and facilitating troubleshooting.



Overview

Rockwell Automation recognizes that giving end users, OEMs and system integrators the power to quickly change and grow with their applications is key to their success. Because of varying demands of the market, Rockwell Automation is delivering a scalable sequence management solution for its PlantPax distributed control system – the PlantPax Sequencer Object. It provides a flexible controller-based step sequencing solution independent of application servers and software.

Your sequences can now be configured directly in the controller through a standard user interface without requiring code changes to the system. PlantPax Sequencer Object can be employed for both simple and complex sequences without costly re-engineering and testing, simply by adding the extra steps of the new larger process.

PlantPax Sequencer Object leverages the same configuration, networking and visualization environment associated with larger-scale systems from Rockwell Automation. It enables local, single unit supervision and control, while supporting multiple, independent procedures in a single controller. This helps provide system integrators, equipment builders and end users with cost-effective options when integrating into a plant-wide control system.

LISTEN.
THINK.
SOLVE.

Rockwell
Automation



Typical Applications

PlantPax Sequencer Object is ideal for complicated startup and shut downs. Other applications include: equipment startup/shutdown, material transfer, slurry makeup and it is also ideal for skid cleaning processes by giving the user an easy way to create predefined sequences of steps that constitute a process and simply initiating them on demand.

Leverages Standard Integrated Architecture™ Technology

Since PlantPax Sequencer Object is built using the standard control and visualization capabilities found in Integrated Architecture from Rockwell Automation, it provides a common way to configure, and visualize the process across different hardware platforms. Take advantage of the wide array of control products from Rockwell Automation, offering mid-range controllers and visualization solutions for small, skid-based control and high-range solutions for larger, multi-unit systems. This strategy provides you with the opportunity to standardize on enterprise wide control solutions independent of the hardware and software platform.



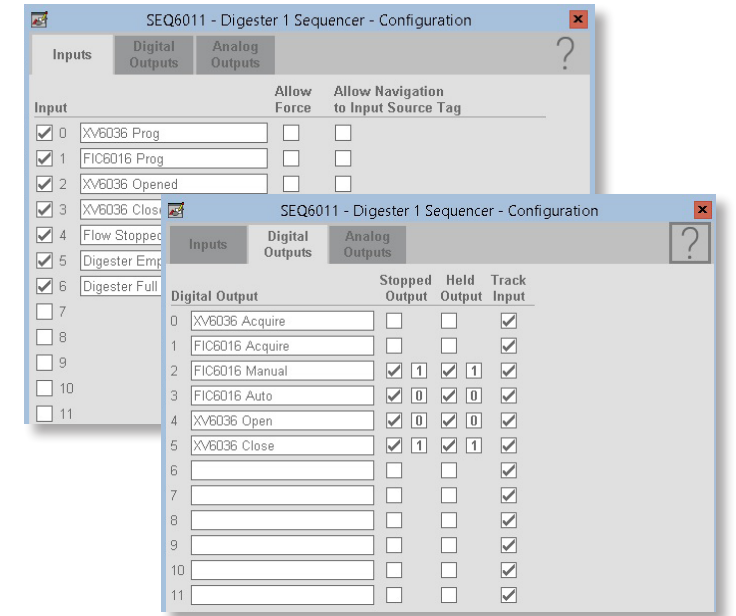
Scalable Controller-based Solution

PlantPax Sequencer Object has been designed to automate common procedures in alignment with the ISA-106 standard. This strategy provides the end user with options for integration and customization without imposing design constraints on the OEM delivering the equipment. Additionally, PlantPax Sequencer Object gives the end-user the ability to scale operations. Processes can start small, independent and simple. But over time, as systems grow or requirements change, flexibility to tie these independent processes together under a single system is an option. Sequencer Object offers this level of scalability to prevent costly redesign and engineering.



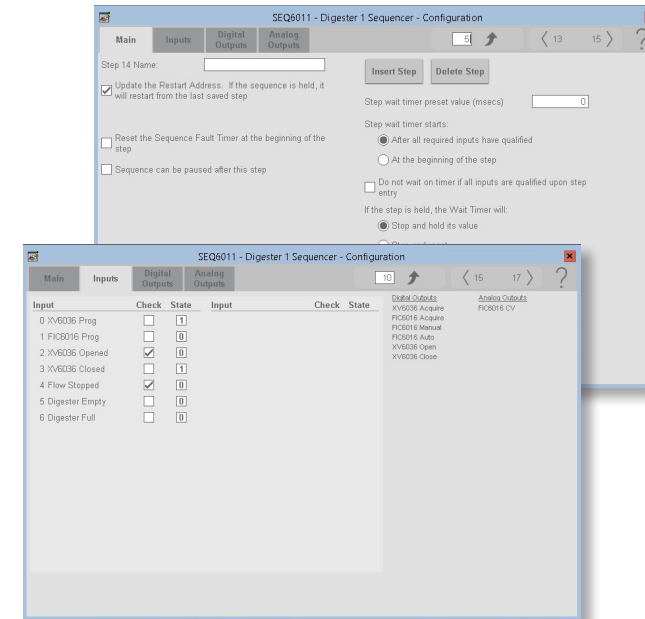
Equipment Configuration

PlantPax Sequencer Object can be used to replace any outdated and unsupported code. First equipment components are defined and the appropriate connections inside the programming interface are made. Once this information is available, it's easy to begin building your processes as a sequence of steps through the HMI-based user interface. PlantPax Sequencer Object operates at the component layer of the control architecture; this allows the control of the individual physical components of the equipment.



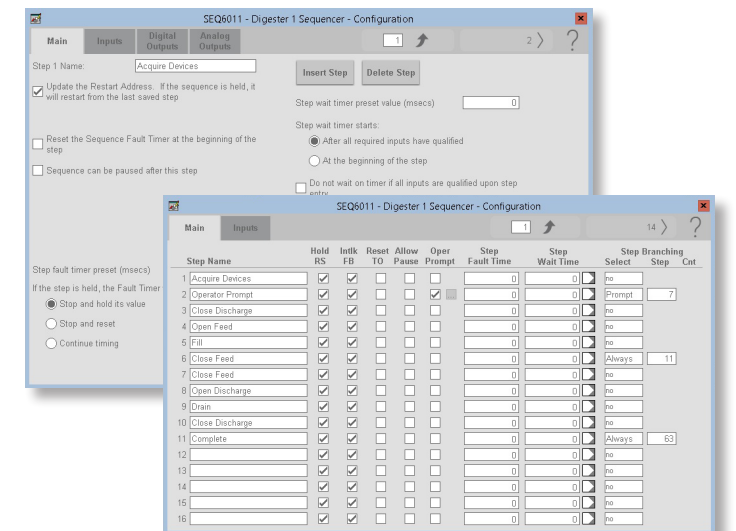
Step Configuration

PlantPax Sequencer Object is delivered with a standard user interface to build sequences of steps that define the equipment action in your process and the criteria to advance to subsequent steps. This editor provides a simple way to configure and organize the steps needed to complete your process. In addition, take advantage of the secure, runtime editing capability built into the same configuration interface. Complete user access to any and transition criteria at any point in the process!



Operator Runtime Control

PlantPax Sequencer Object provides secure access to an intuitive run-time user interface using out-of-the-box functionality. This enables you to load sequences, control execution, respond to manual prompts and access information about the running system from any operator terminal. Take advantage of the detailed view when more information is required or embed summary controls directly into existing process control graphics regardless of your visualization needs, flexibility and operability with safety and consistency.



Where to Get the Rockwell Automation Library of Process Objects

The Rockwell Automation Library of Process Objects can be downloaded from the Product Compatibility Download Center at:

<http://www.rockwellautomation.com/rockwellautomation/support/pcdc.page>

Allen-Bradley, Integrated Architecture, LISTEN. THINK. SOLVE., and PlantPAx are trademarks of Rockwell Automation, Inc. Trademarks not belonging to Rockwell Automation are property of their respective companies.

www.rockwellautomation.com

Power, Control and Information Solutions Headquarters

Americas: Rockwell Automation, 1201 South Second Street, Milwaukee, WI 53204-2496 USA, Tel: (1) 414.382.2000, Fax: (1) 414.382.4444

Europe/Middle East/Africa: Rockwell Automation NV, Pegasus Park, De Kleetlaan 12a, 1831 Diegem, Belgium, Tel: (32) 2 663 0600, Fax: (32) 2 663 0640

Asia Pacific: Rockwell Automation, Level 14, Core F, Cyberport 3, 100 Cyberport Road, Hong Kong, Tel: (852) 2887 4788, Fax: (852) 2508 1846